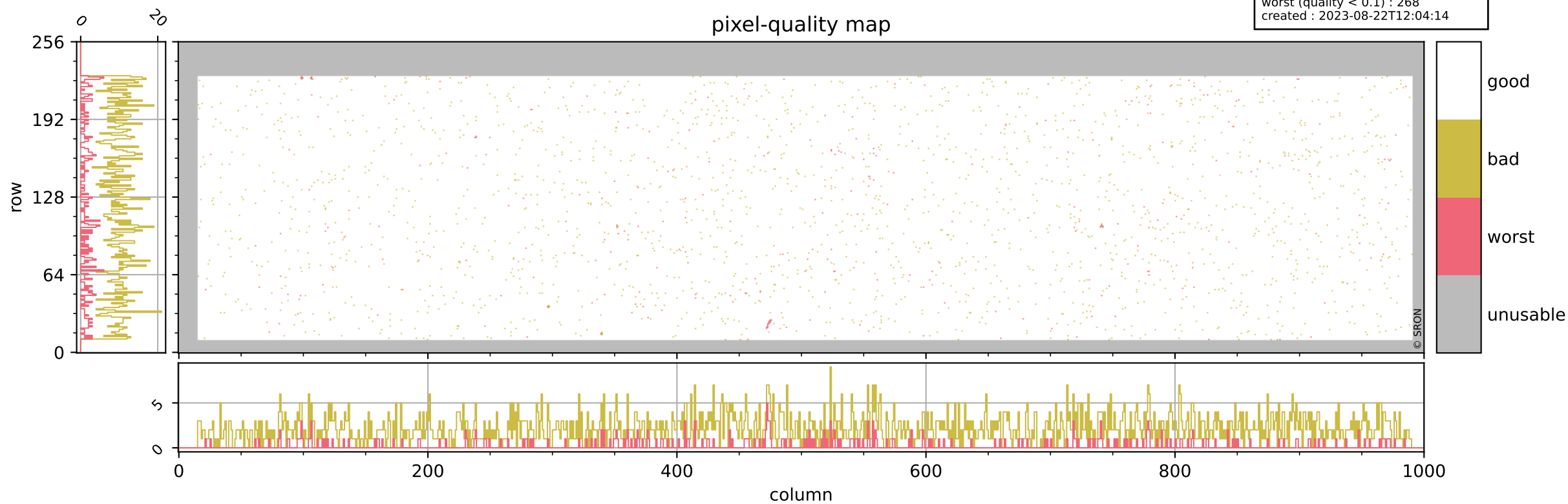


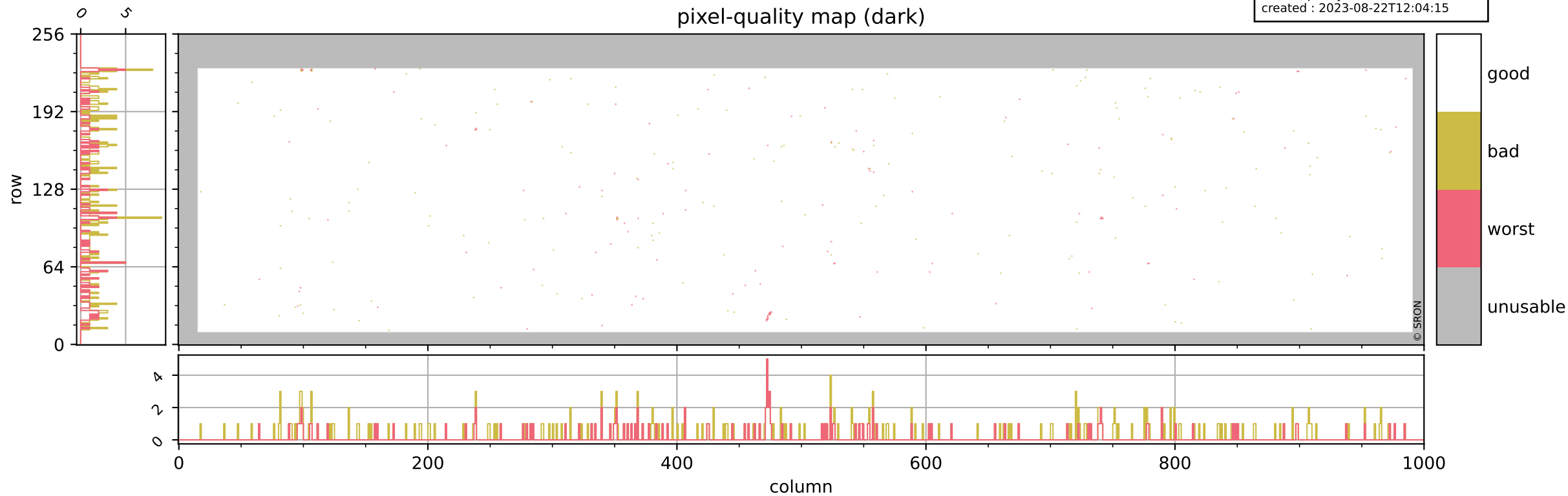
Tropomi SWIR pixel quality (beta nominal)

orbits : 20 in [16192, 16237]
coverage : 2020-11-27 / 2020-11-30
bad (quality < 0.8) : 2216
worst (quality < 0.1) : 268
created : 2023-08-22T12:04:14



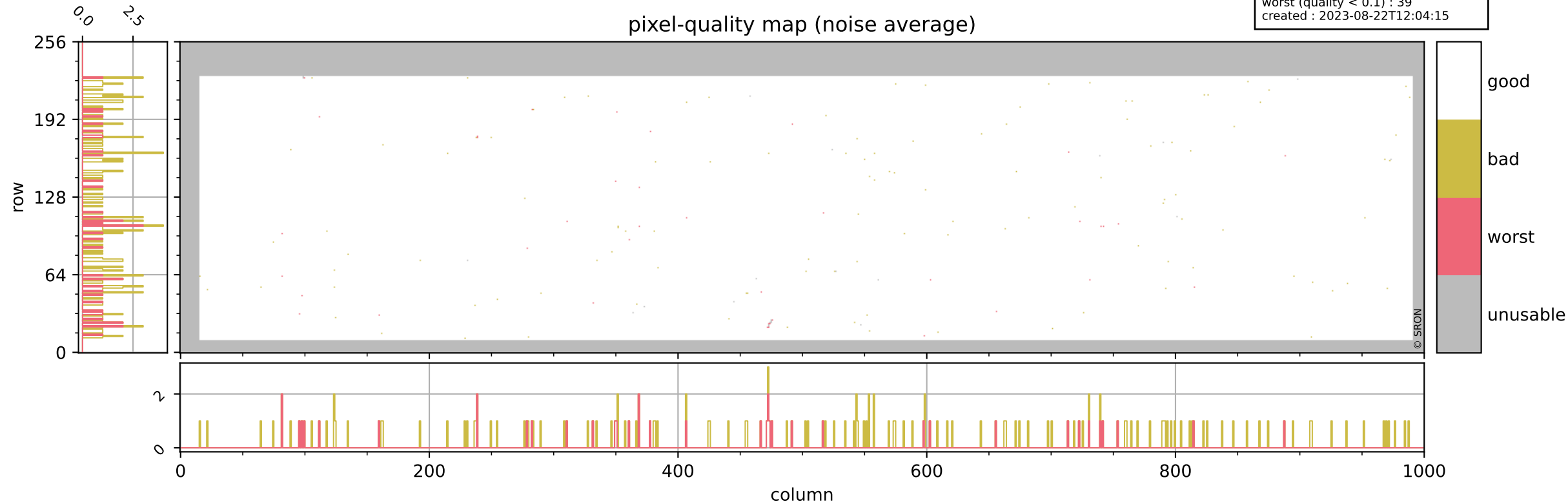
Tropomi SWIR pixel quality (beta nominal)

orbits : 20 in [16192, 16237]
coverage : 2020-11-27 / 2020-11-30
bad (quality < 0.8) : 290
worst (quality < 0.1) : 119
created : 2023-08-22T12:04:15



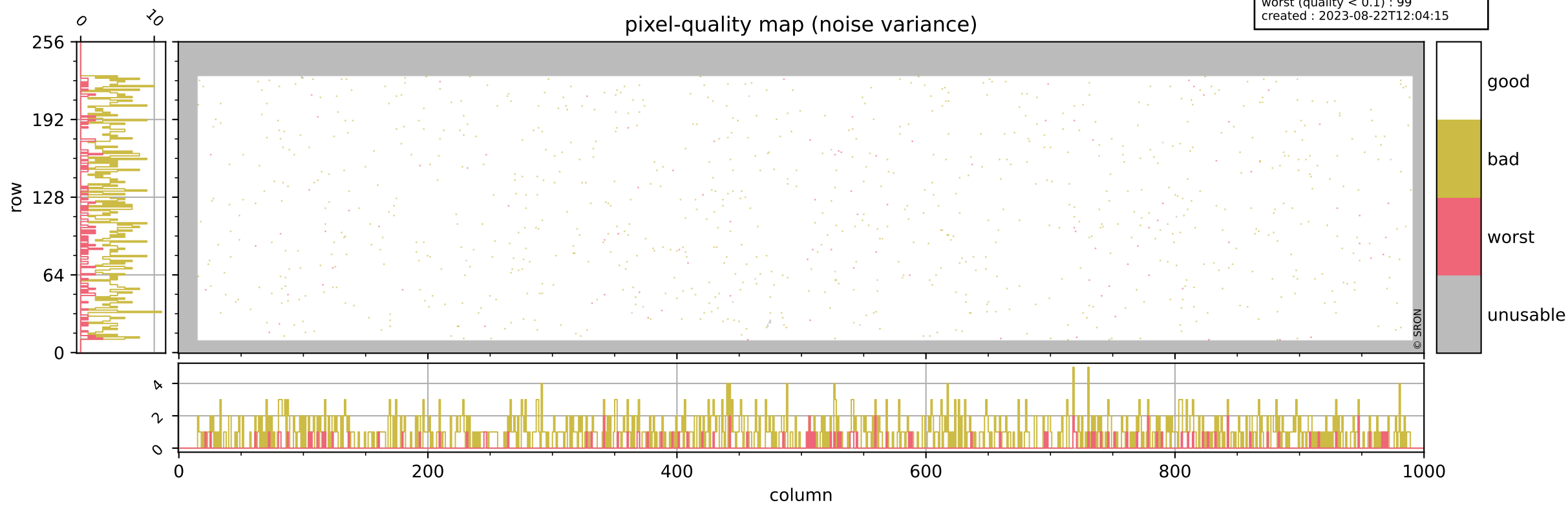
Tropomi SWIR pixel quality (beta nominal)

orbits : 20 in [16192, 16237]
coverage : 2020-11-27 / 2020-11-30
bad (quality < 0.8) : 153
worst (quality < 0.1) : 39
created : 2023-08-22T12:04:15



Tropomi SWIR pixel quality (beta nominal)

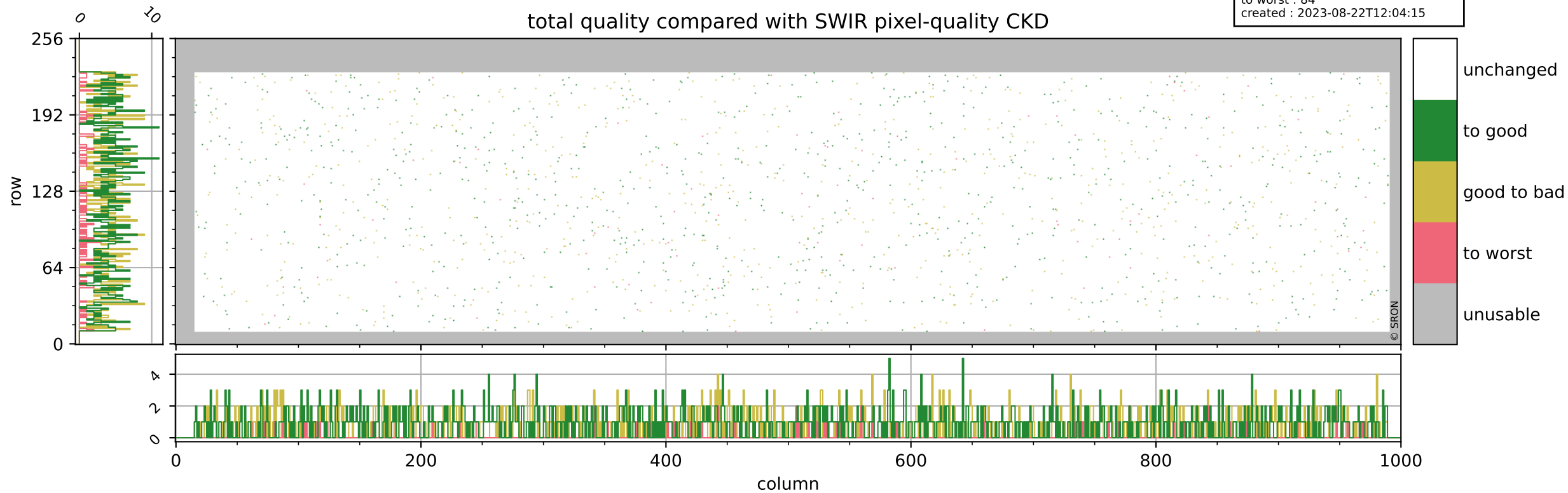
orbits : 20 in [16192, 16237]
coverage : 2020-11-27 / 2020-11-30
bad (quality < 0.8) : 905
worst (quality < 0.1) : 99
created : 2023-08-22T12:04:15



Tropomi SWIR pixel quality (beta nominal)

orbits : 20 in [16192, 16237]
coverage : 2020-11-27 / 2020-11-30
to good : 866
good to bad : 725
to worst : 84
created : 2023-08-22T12:04:15

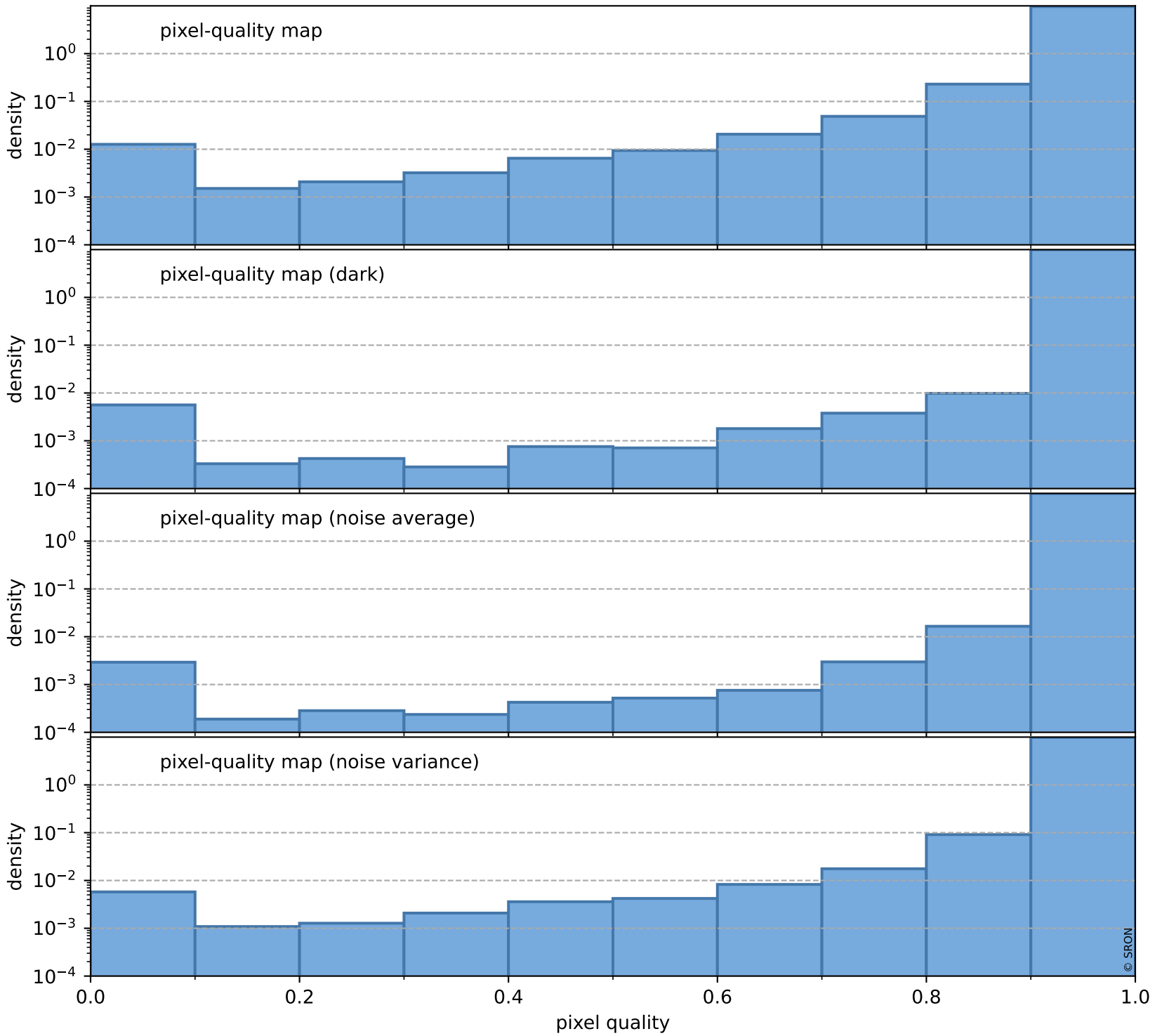
total quality compared with SWIR pixel-quality CKD



Tropomi SWIR pixel quality (beta nominal)

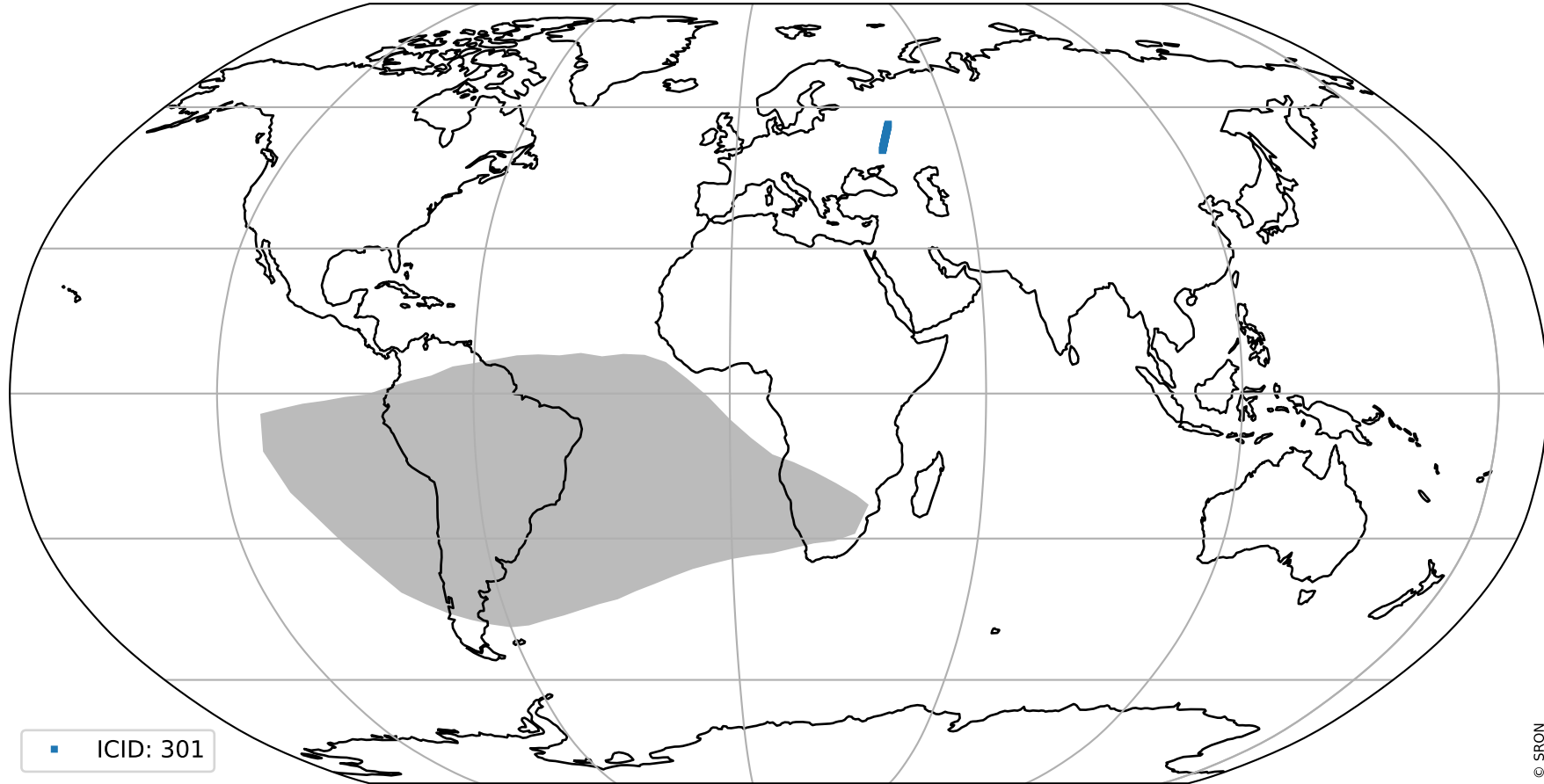
orbits : 20 in [16192, 16237]
coverage : 2020-11-27 / 2020-11-30
created : 2023-08-22T12:04:15

Histograms of pixel-quality



Tropomi SWIR pixel quality (beta nominal) ground-tracks of Sentinel-5P

orbits : 20 in [16192, 16237]
coverage : 2020-11-27 / 2020-11-30
created : 2023-08-22T12:04:16



■ ICID: 301

Tropomi SWIR pixel quality (beta nominal)

orbits : [1867, 16237]
coverage : 2018-02-20 / 2020-11-30
created : 2023-08-22T12:04:16

trend of pixel quality & temperatures

