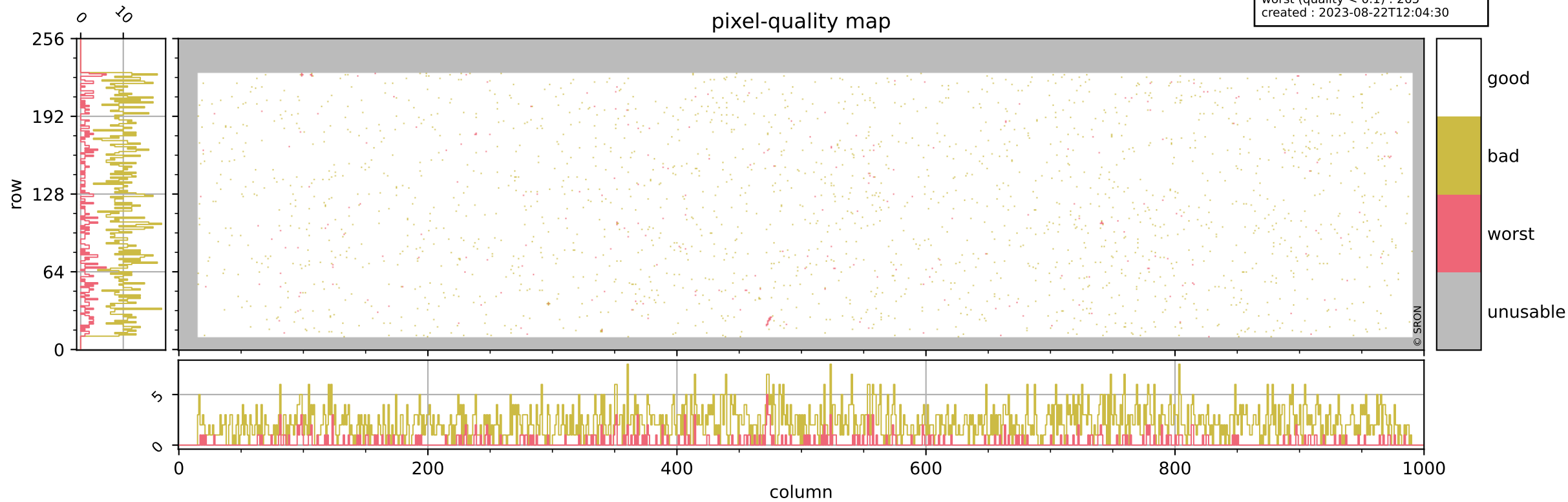


# Tropomi SWIR pixel quality (beta nominal)

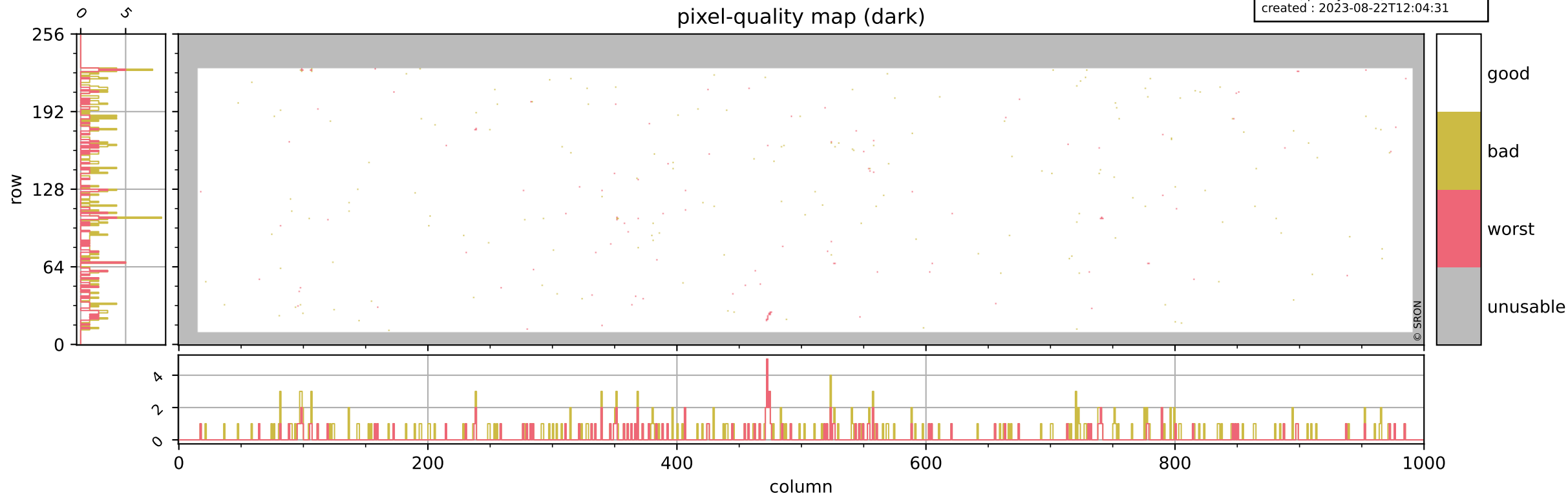
orbits : 20 in [16462, 16507]  
coverage : 2020-12-16 / 2020-12-19  
bad (quality < 0.8) : 2210  
worst (quality < 0.1) : 265  
created : 2023-08-22T12:04:30

## pixel-quality map



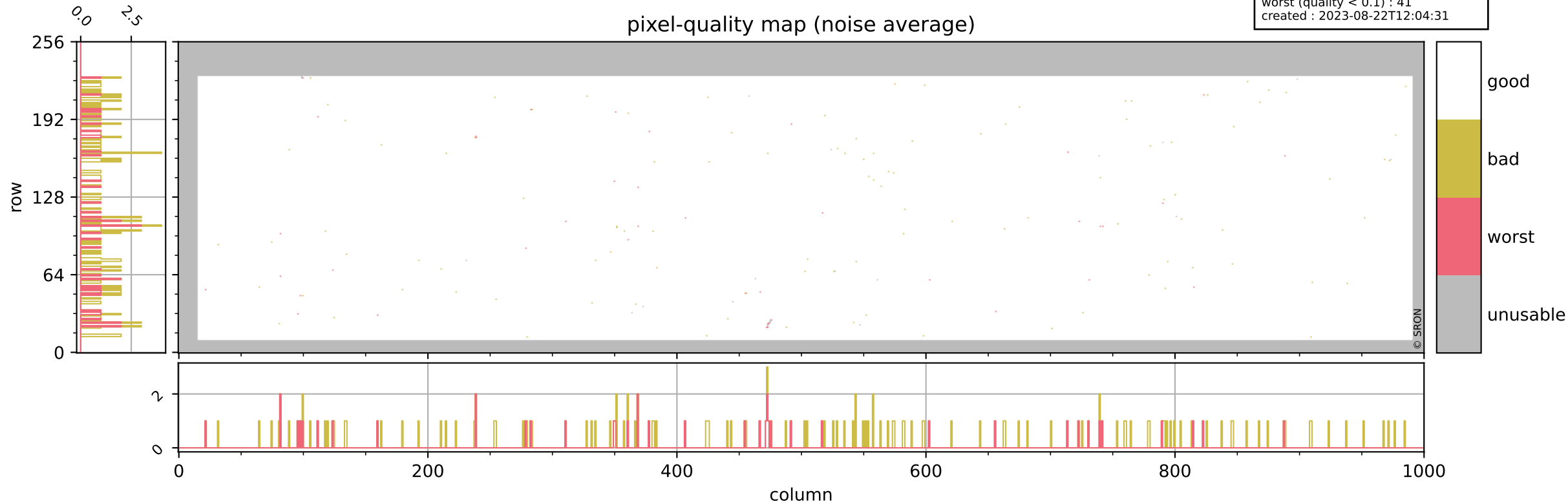
# Tropomi SWIR pixel quality (beta nominal)

orbits : 20 in [16462, 16507]  
coverage : 2020-12-16 / 2020-12-19  
bad (quality < 0.8) : 289  
worst (quality < 0.1) : 119  
created : 2023-08-22T12:04:31



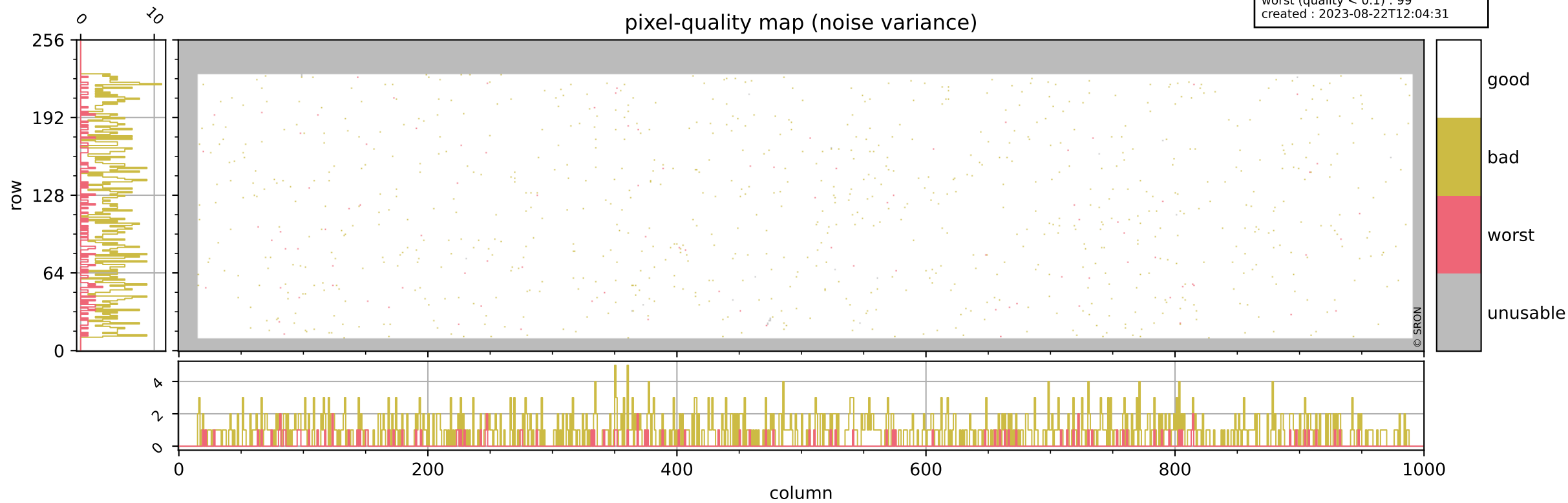
# Tropomi SWIR pixel quality (beta nominal)

orbits : 20 in [16462, 16507]  
coverage : 2020-12-16 / 2020-12-19  
bad (quality < 0.8) : 147  
worst (quality < 0.1) : 41  
created : 2023-08-22T12:04:31



# Tropomi SWIR pixel quality (beta nominal)

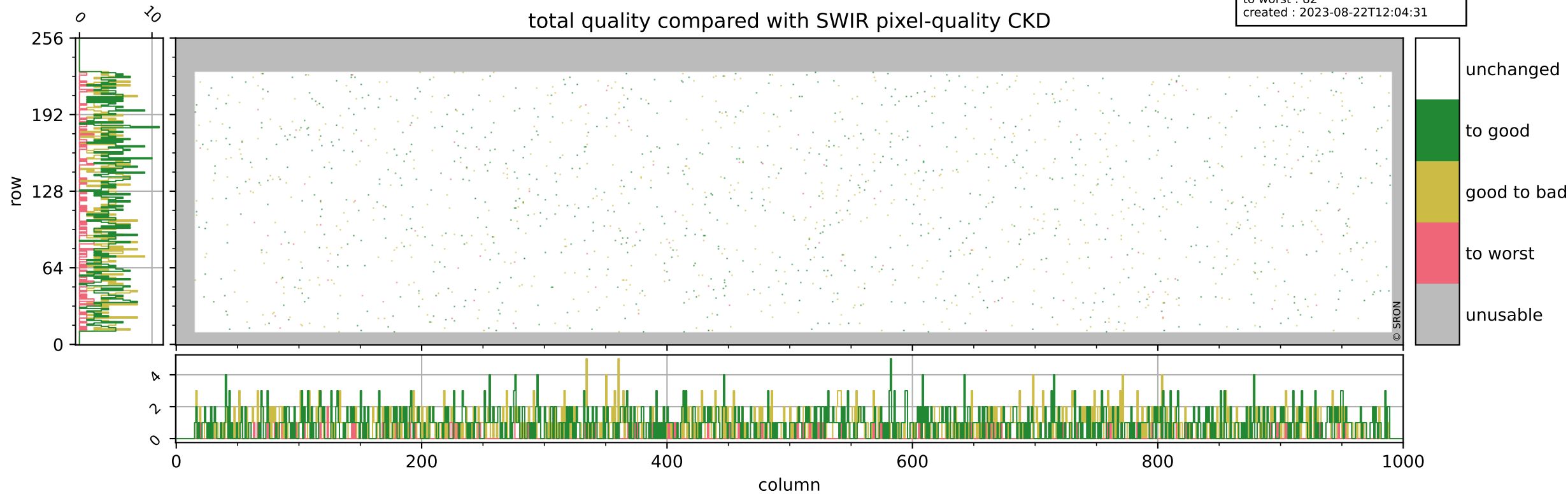
orbits : 20 in [16462, 16507]  
coverage : 2020-12-16 / 2020-12-19  
bad (quality < 0.8) : 898  
worst (quality < 0.1) : 99  
created : 2023-08-22T12:04:31



# Tropomi SWIR pixel quality (beta nominal)

orbits : 20 in [16462, 16507]  
coverage : 2020-12-16 / 2020-12-19  
to good : 861  
good to bad : 715  
to worst : 82  
created : 2023-08-22T12:04:31

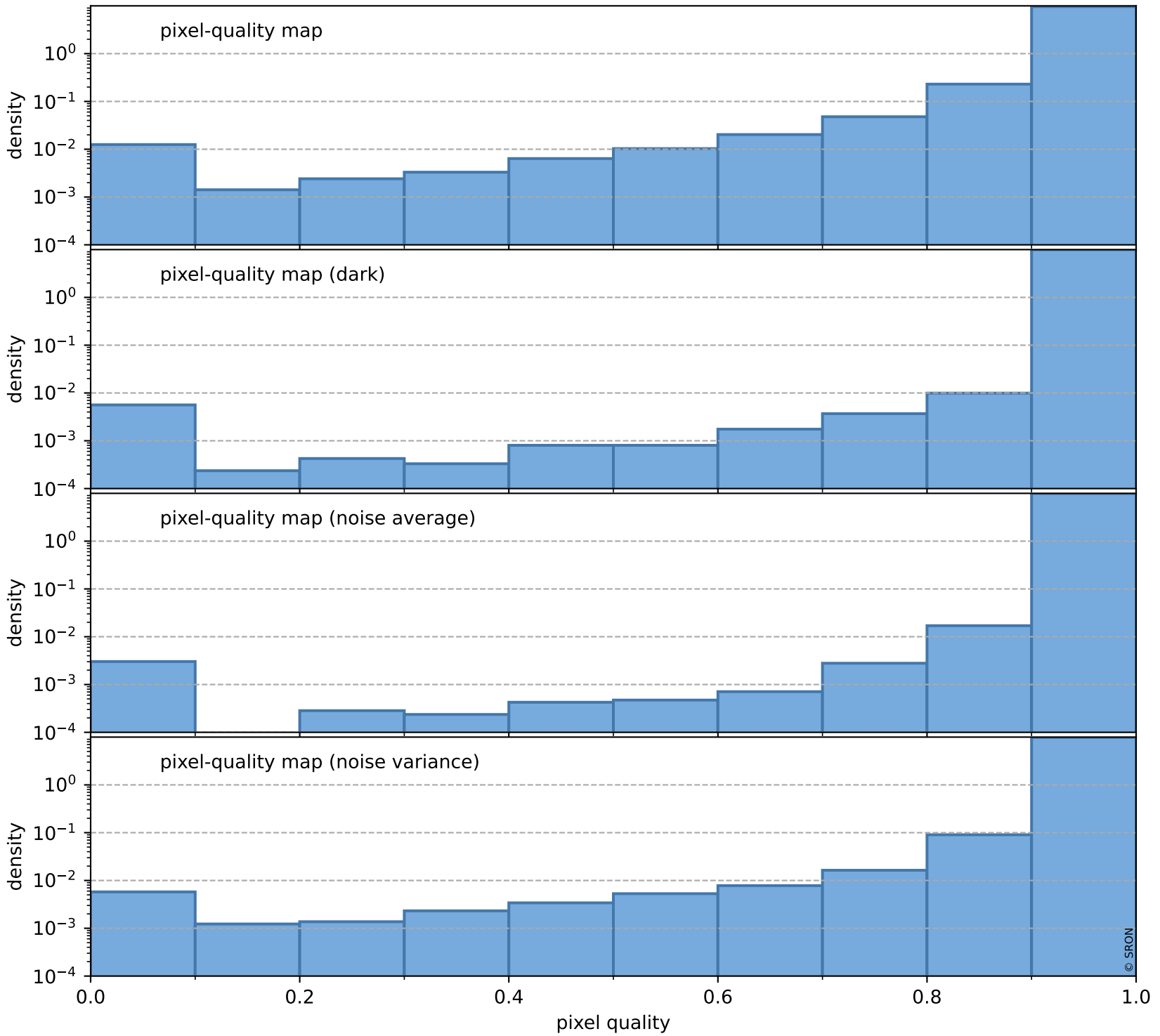
## total quality compared with SWIR pixel-quality CKD



# Tropomi SWIR pixel quality (beta nominal)

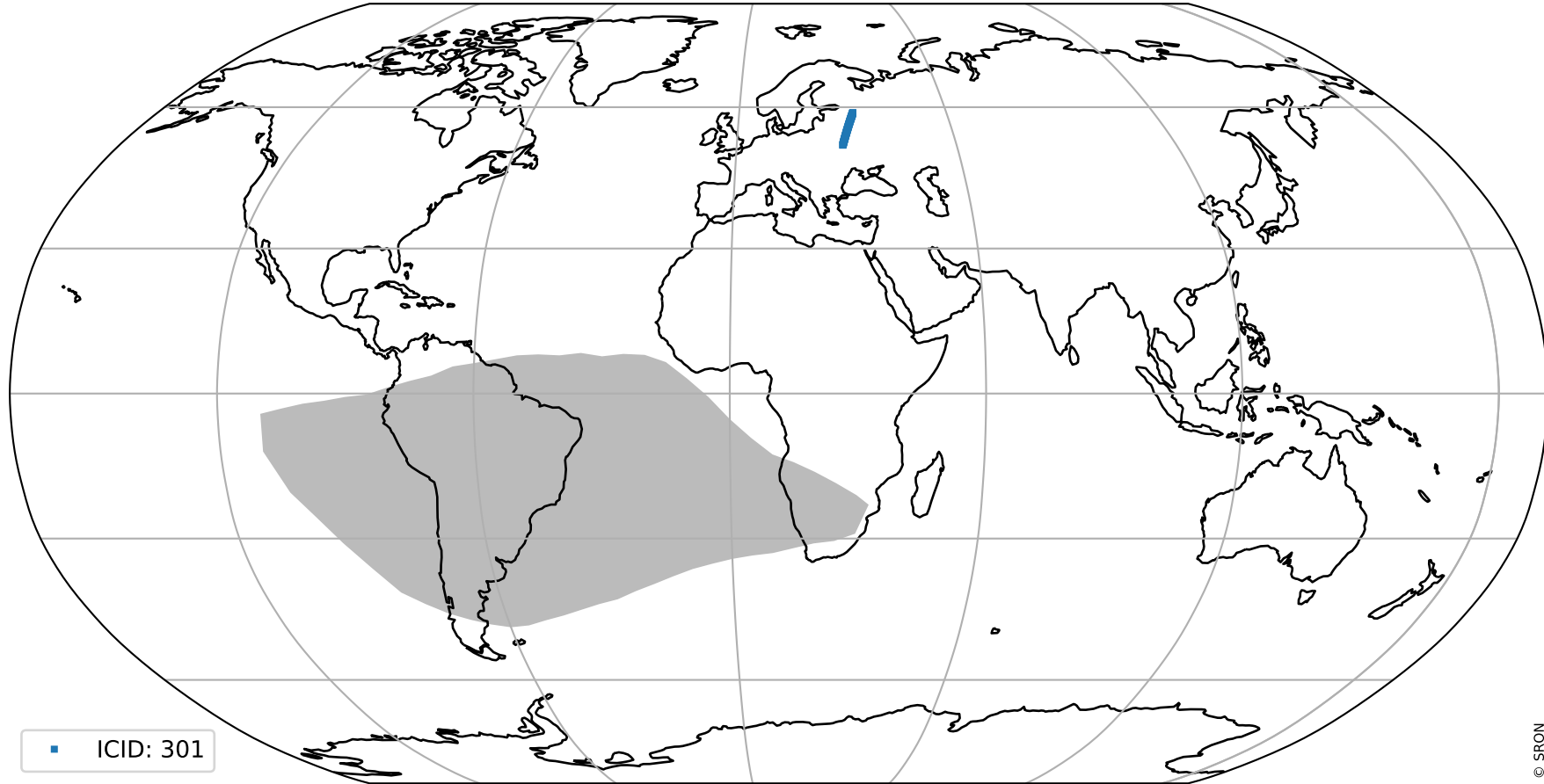
orbits : 20 in [16462, 16507]  
coverage : 2020-12-16 / 2020-12-19  
created : 2023-08-22T12:04:32

## Histograms of pixel-quality



# Tropomi SWIR pixel quality (beta nominal) ground-tracks of Sentinel-5P

orbits : 20 in [16462, 16507]  
coverage : 2020-12-16 / 2020-12-19  
created : 2023-08-22T12:04:32



# Tropomi SWIR pixel quality (beta nominal)

orbits : [1867, 16507]  
coverage : 2018-02-20 / 2020-12-19  
created : 2023-08-22T12:04:32

## trend of pixel quality & temperatures

