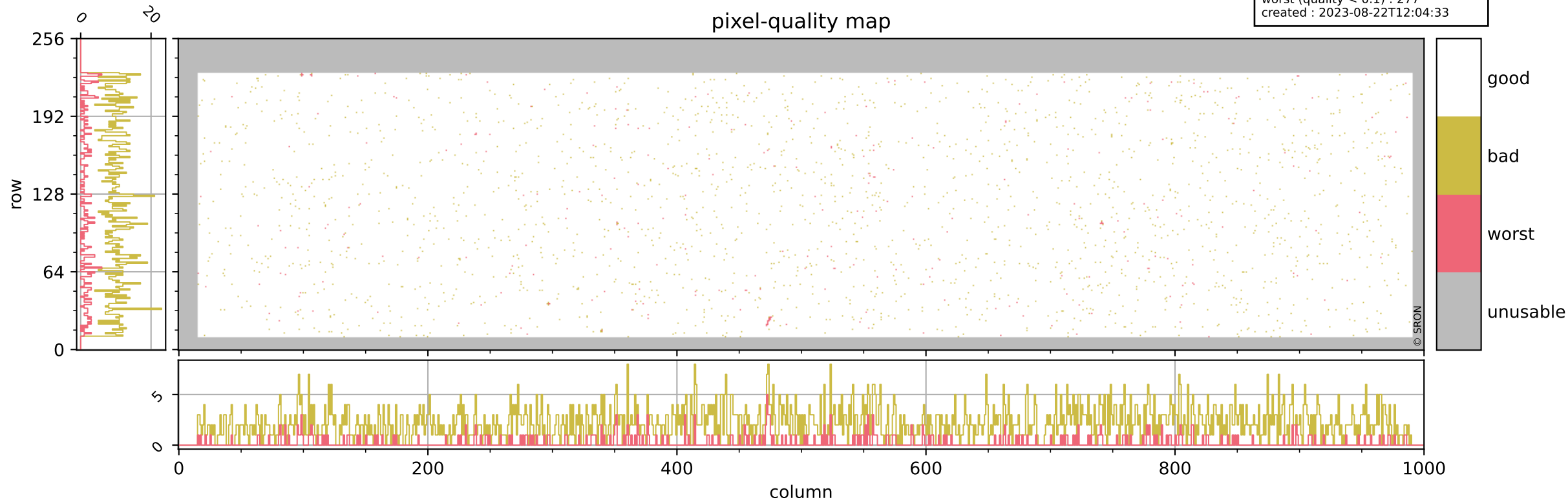


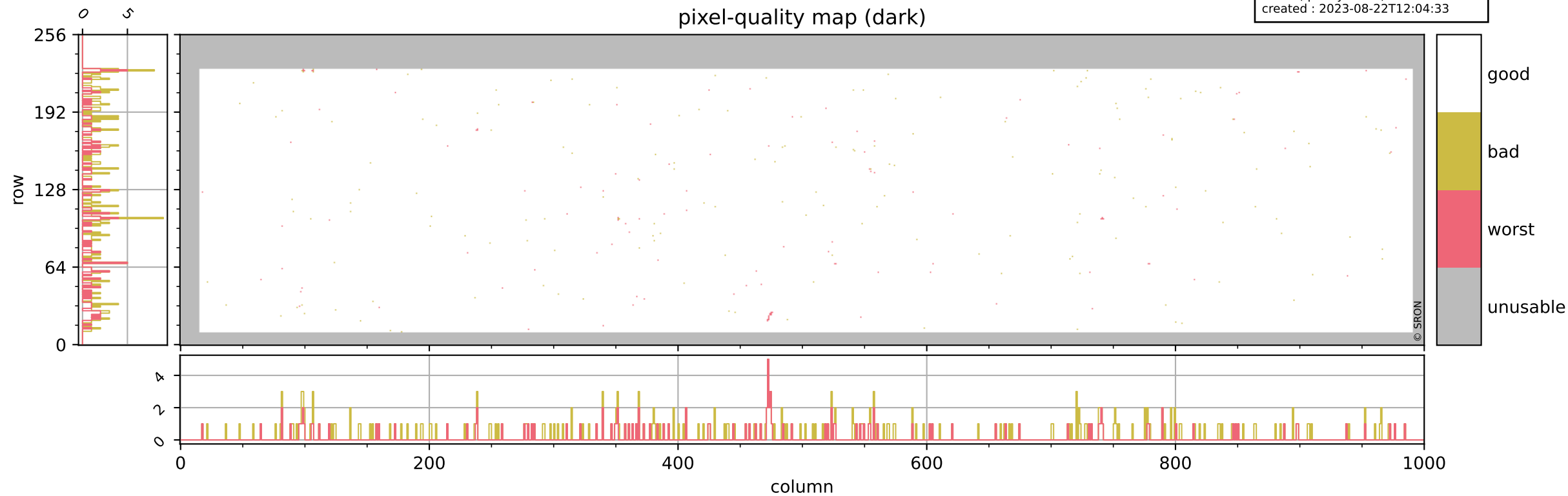
Tropomi SWIR pixel quality (beta nominal)

orbits : 18 in [16507, 16552]
coverage : 2020-12-20 / 2020-12-23
bad (quality < 0.8) : 2204
worst (quality < 0.1) : 277
created : 2023-08-22T12:04:33



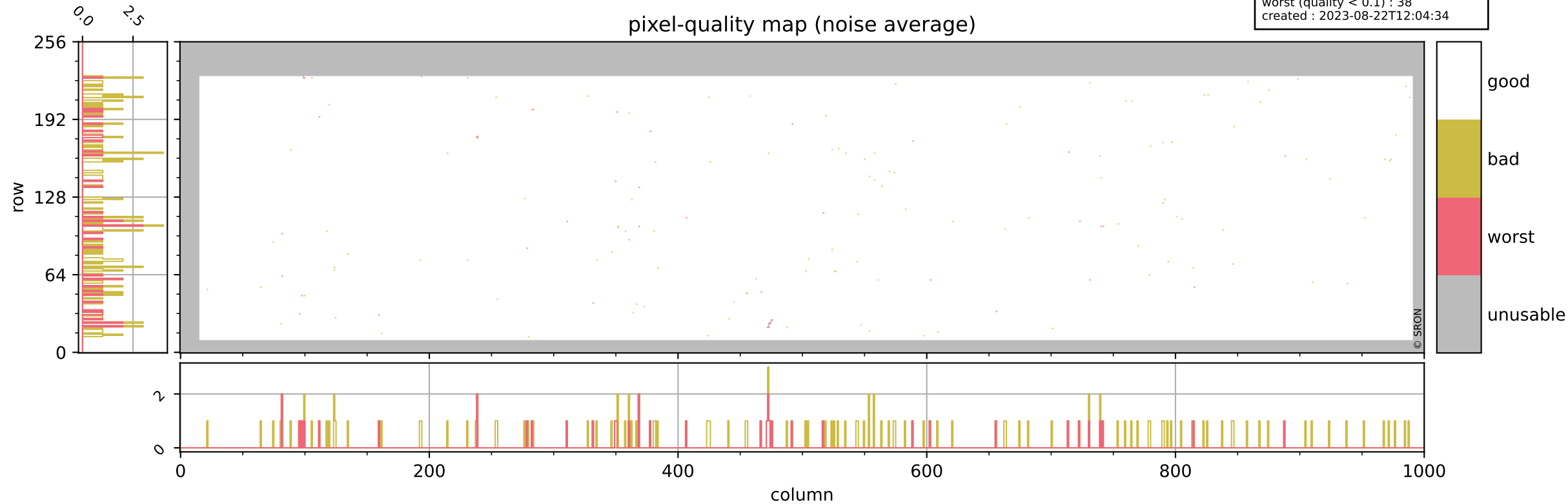
Tropomi SWIR pixel quality (beta nominal)

orbits : 18 in [16507, 16552]
coverage : 2020-12-20 / 2020-12-23
bad (quality < 0.8) : 288
worst (quality < 0.1) : 119
created : 2023-08-22T12:04:33



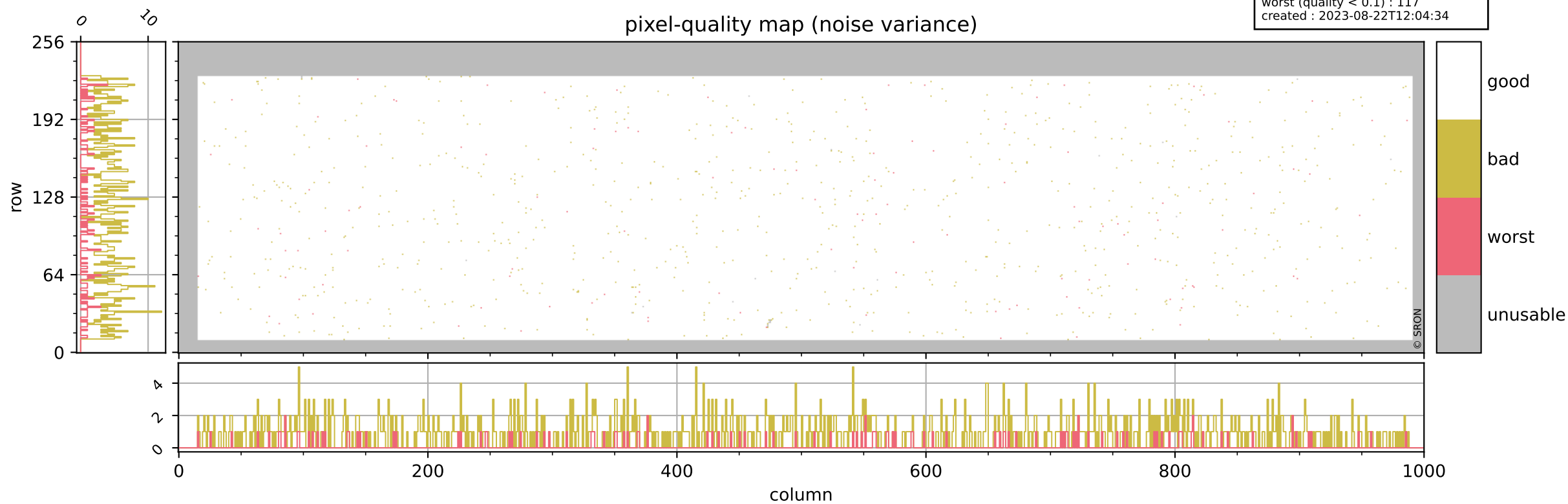
Tropomi SWIR pixel quality (beta nominal)

orbits : 18 in [16507, 16552]
coverage : 2020-12-20 / 2020-12-23
bad (quality < 0.8) : 141
worst (quality < 0.1) : 38
created : 2023-08-22T12:04:34



Tropomi SWIR pixel quality (beta nominal)

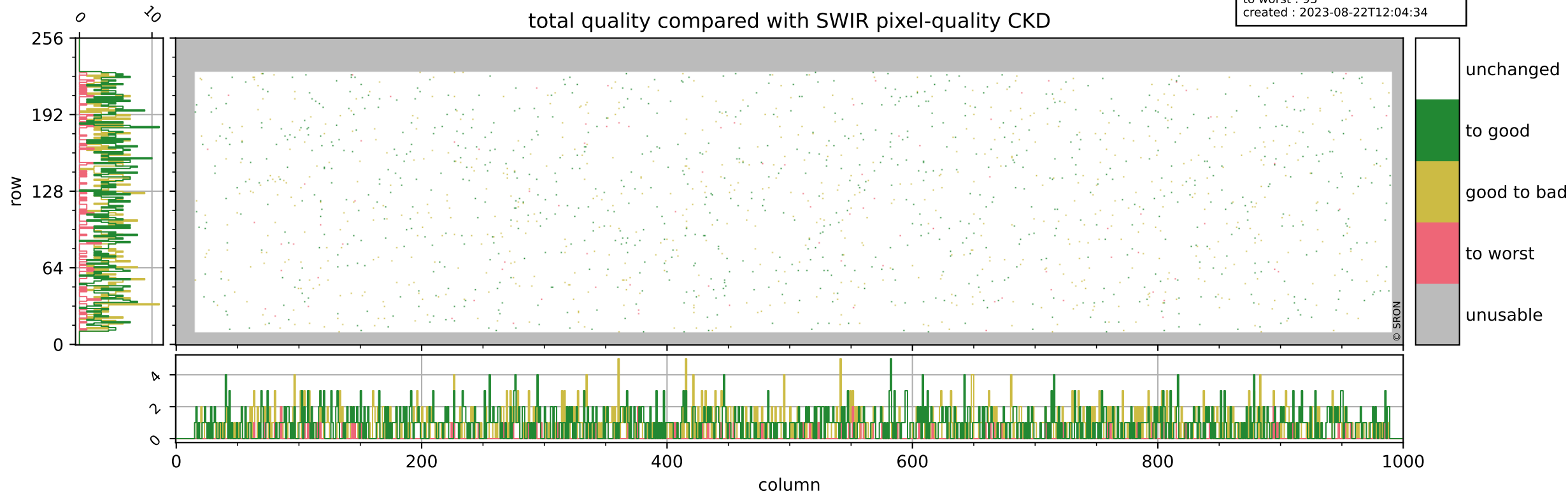
orbits : 18 in [16507, 16552]
coverage : 2020-12-20 / 2020-12-23
bad (quality < 0.8) : 905
worst (quality < 0.1) : 117
created : 2023-08-22T12:04:34



Tropomi SWIR pixel quality (beta nominal)

orbits : 18 in [16507, 16552]
coverage : 2020-12-20 / 2020-12-23
to good : 871
good to bad : 711
to worst : 93
created : 2023-08-22T12:04:34

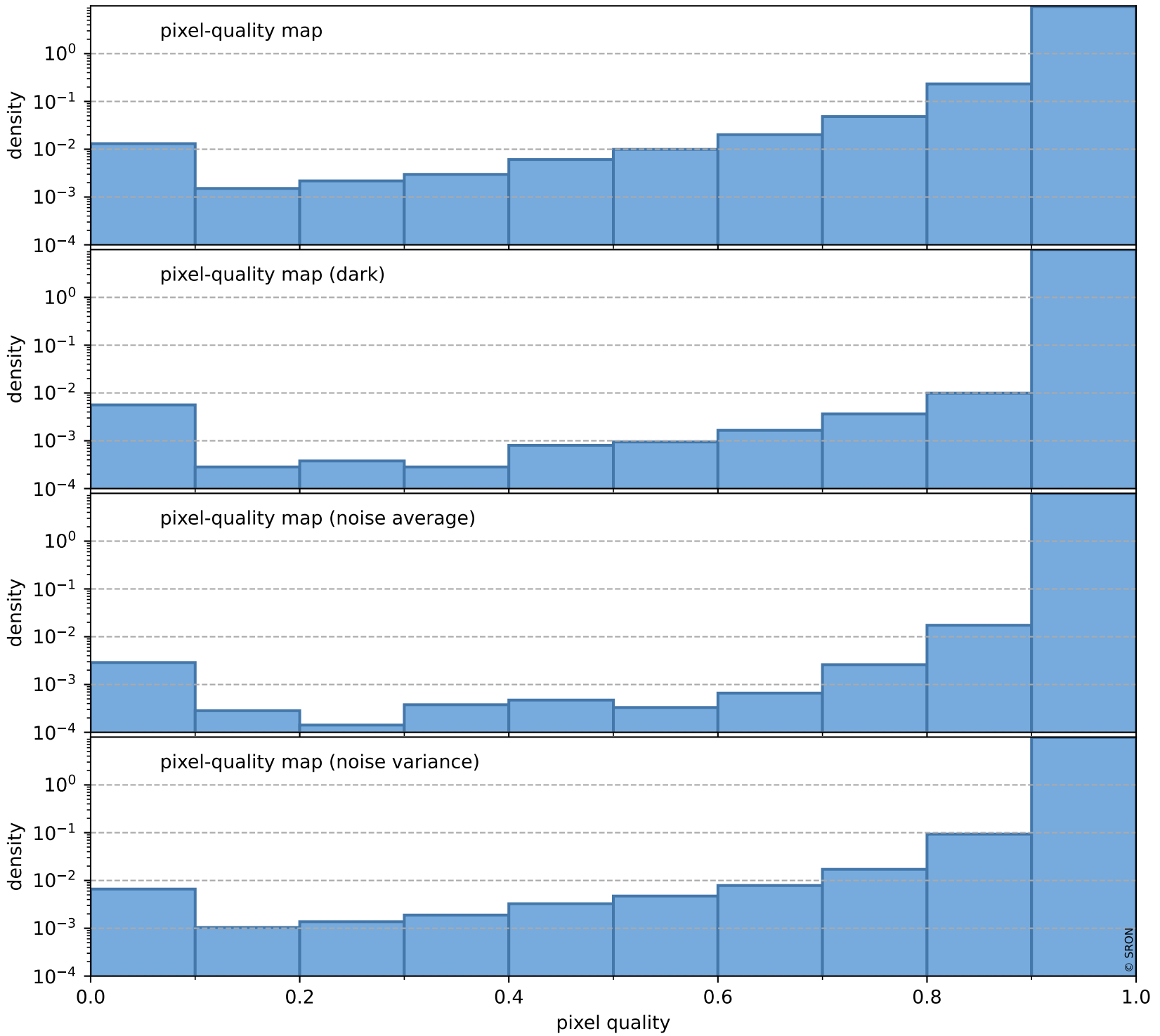
total quality compared with SWIR pixel-quality CKD



Tropomi SWIR pixel quality (beta nominal)

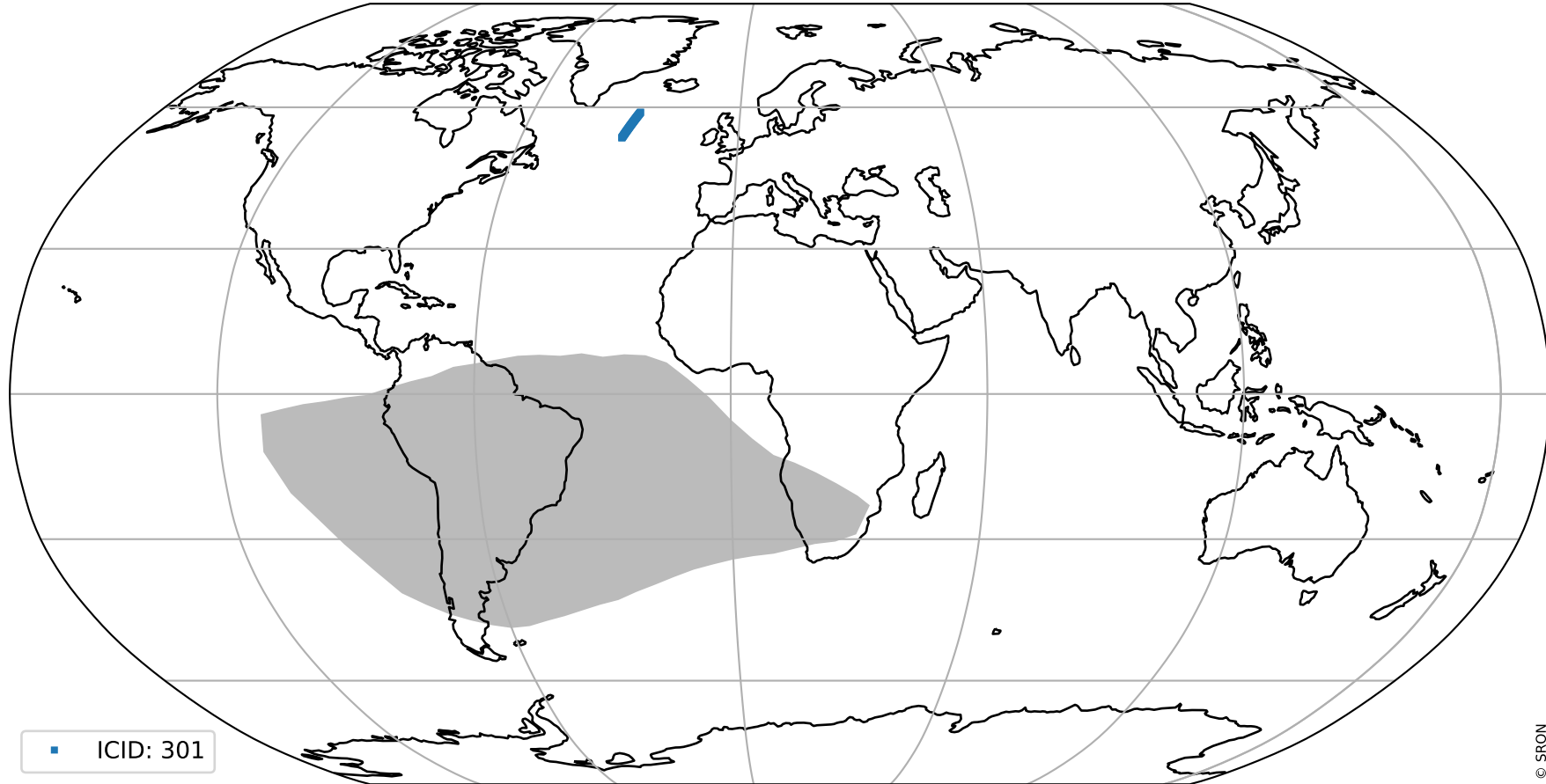
orbits : 18 in [16507, 16552]
coverage : 2020-12-20 / 2020-12-23
created : 2023-08-22T12:04:34

Histograms of pixel-quality



Tropomi SWIR pixel quality (beta nominal) ground-tracks of Sentinel-5P

orbits : 18 in [16507, 16552]
coverage : 2020-12-20 / 2020-12-23
created : 2023-08-22T12:04:35



■ ICID: 301

Tropomi SWIR pixel quality (beta nominal)

orbits : [1867, 16552]
coverage : 2018-02-20 / 2020-12-23
created : 2023-08-22T12:04:35

trend of pixel quality & temperatures

