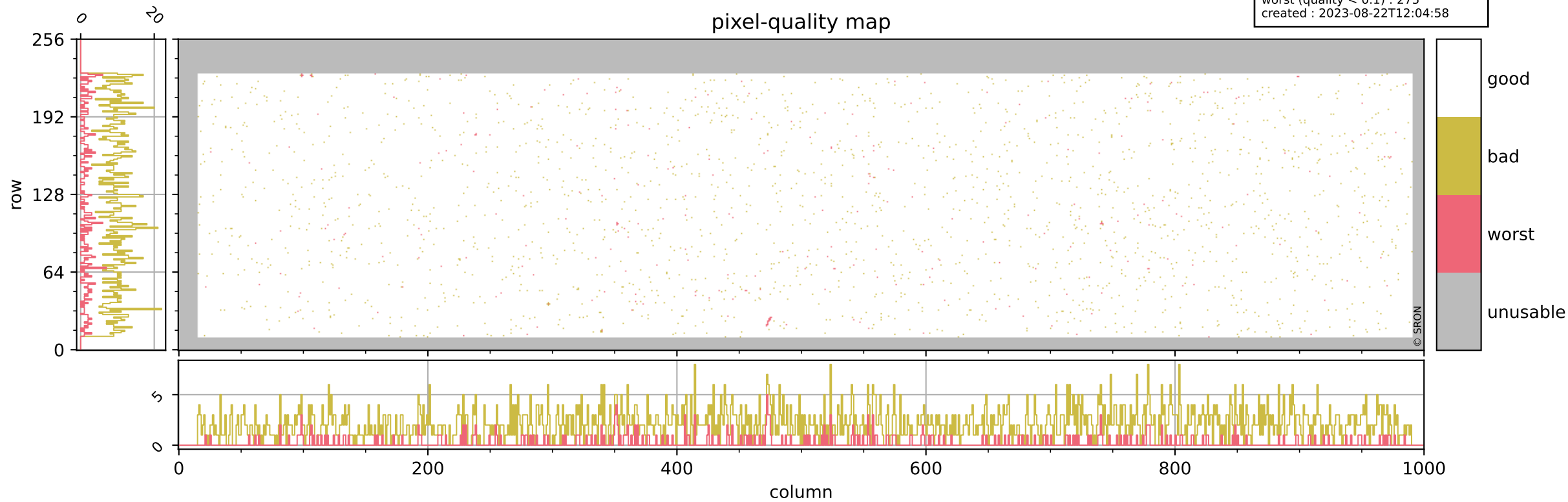


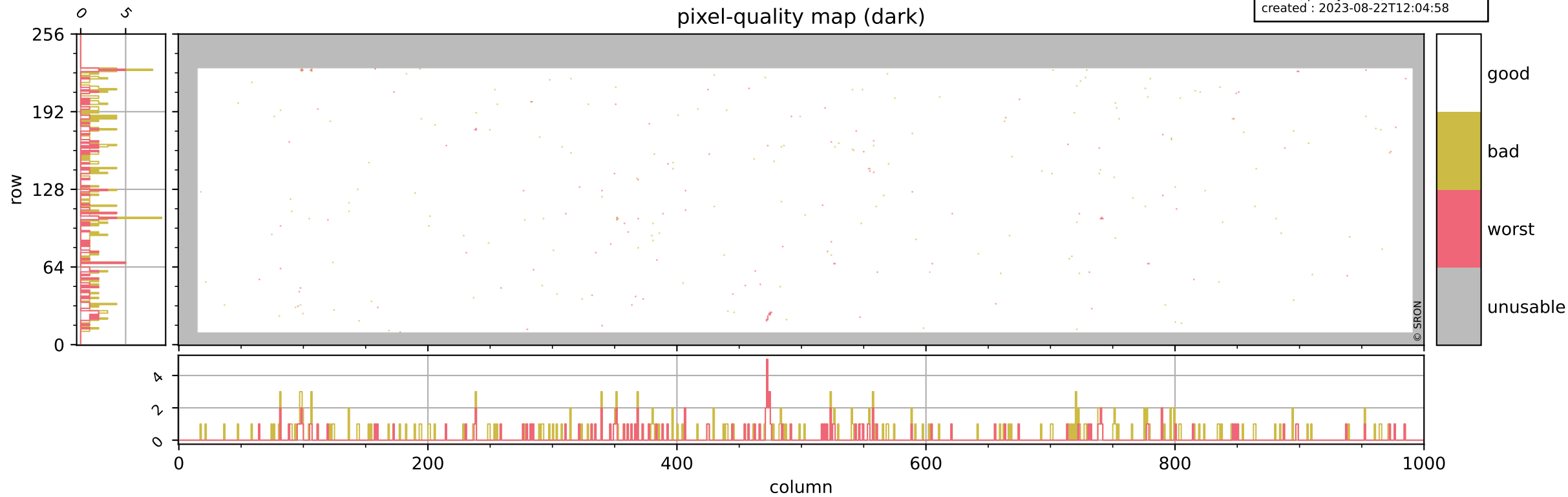
Tropomi SWIR pixel quality (beta nominal)

orbits : 20 in [16912, 16957]
coverage : 2021-01-17 / 2021-01-20
bad (quality < 0.8) : 2145
worst (quality < 0.1) : 275
created : 2023-08-22T12:04:58



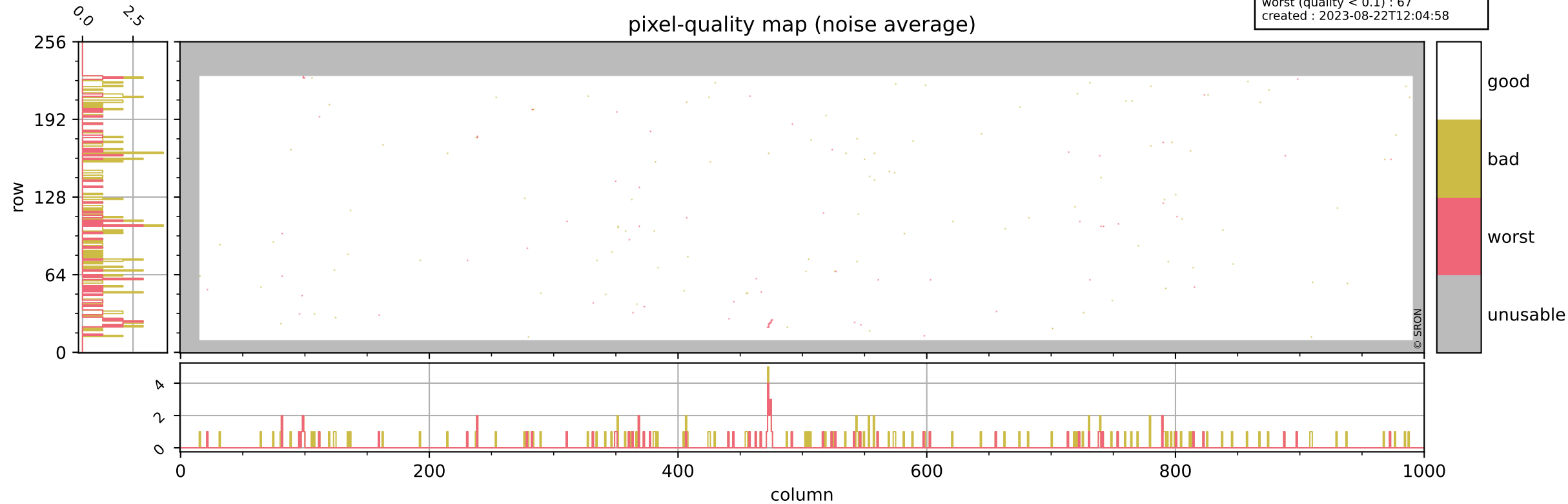
Tropomi SWIR pixel quality (beta nominal)

orbits : 20 in [16912, 16957]
coverage : 2021-01-17 / 2021-01-20
bad (quality < 0.8) : 288
worst (quality < 0.1) : 120
created : 2023-08-22T12:04:58



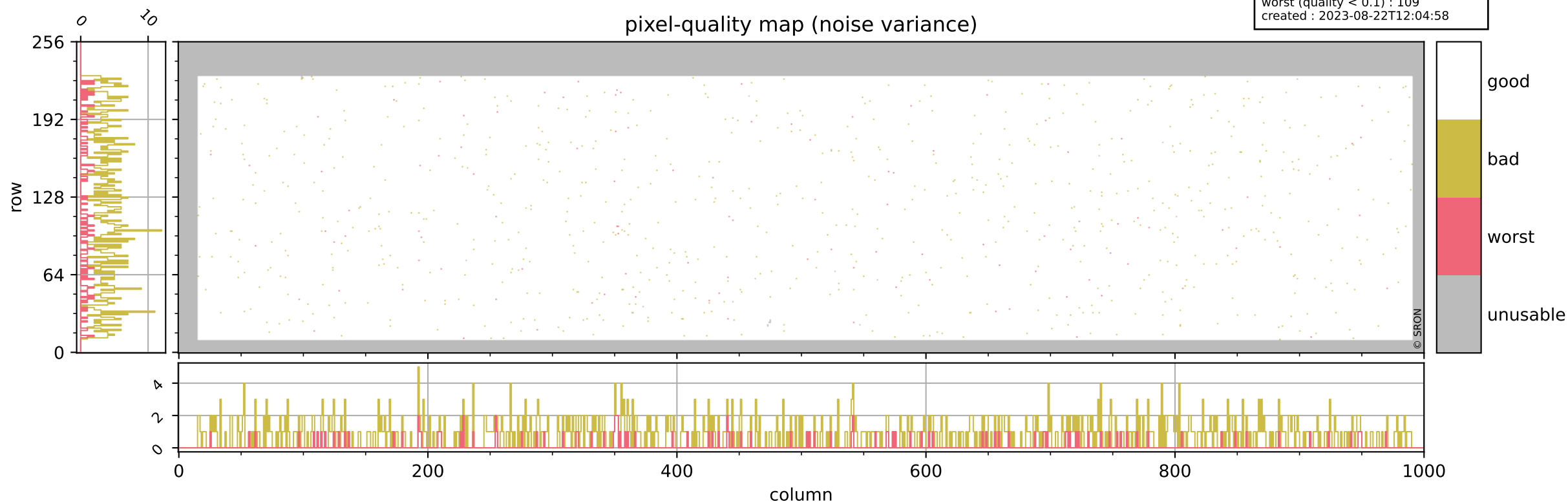
Tropomi SWIR pixel quality (beta nominal)

orbits : 20 in [16912, 16957]
coverage : 2021-01-17 / 2021-01-20
bad (quality < 0.8) : 170
worst (quality < 0.1) : 67
created : 2023-08-22T12:04:58



Tropomi SWIR pixel quality (beta nominal)

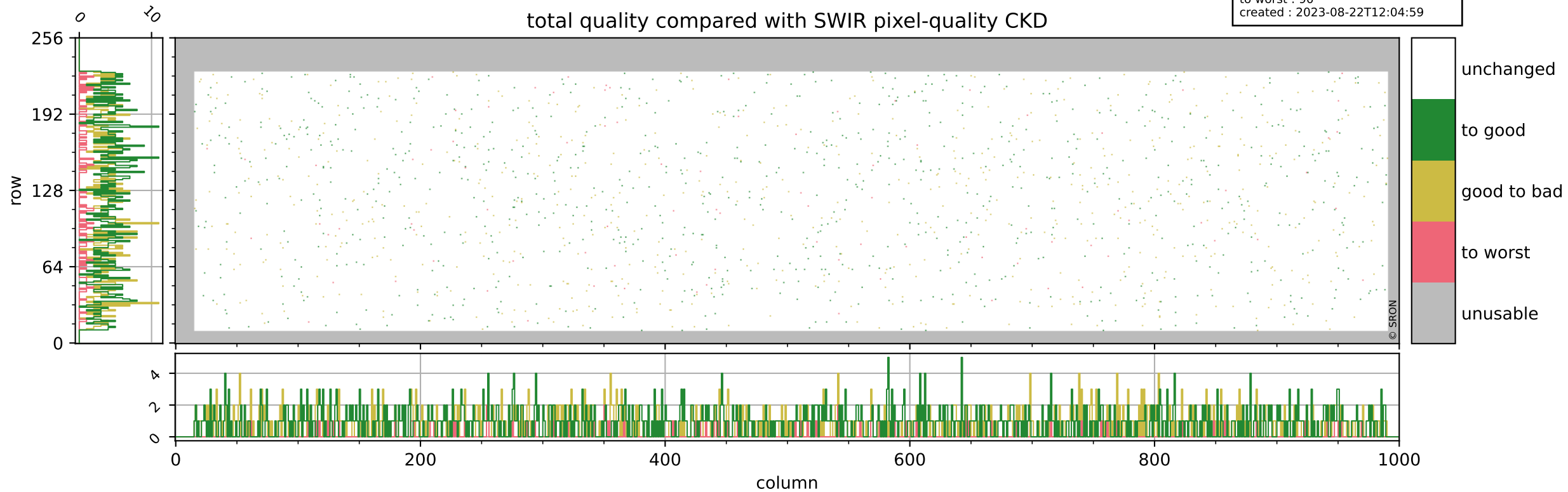
orbits : 20 in [16912, 16957]
coverage : 2021-01-17 / 2021-01-20
bad (quality < 0.8) : 831
worst (quality < 0.1) : 109
created : 2023-08-22T12:04:58



Tropomi SWIR pixel quality (beta nominal)

orbits : 20 in [16912, 16957]
coverage : 2021-01-17 / 2021-01-20
to good : 874
good to bad : 657
to worst : 90
created : 2023-08-22T12:04:59

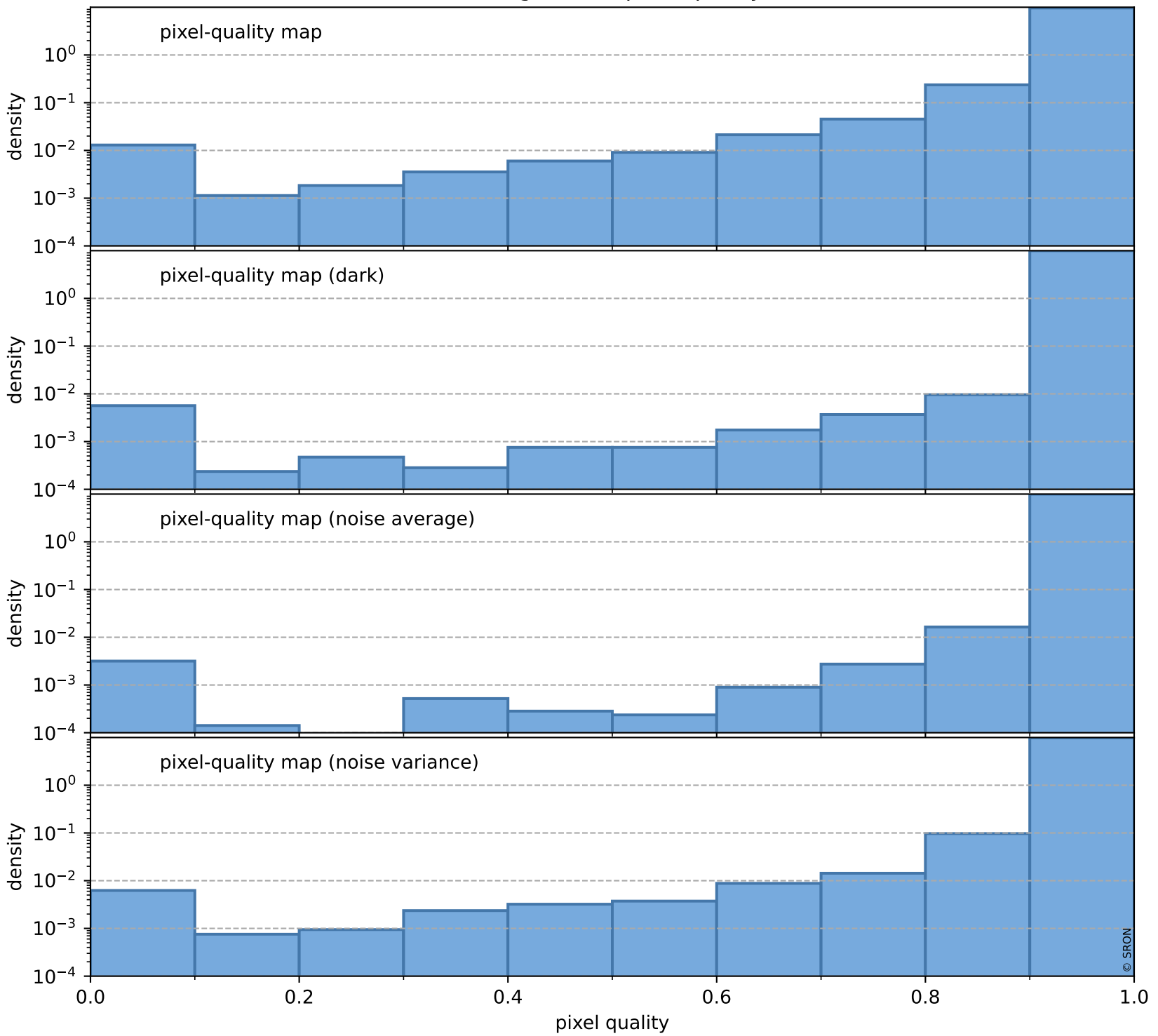
total quality compared with SWIR pixel-quality CKD



Tropomi SWIR pixel quality (beta nominal)

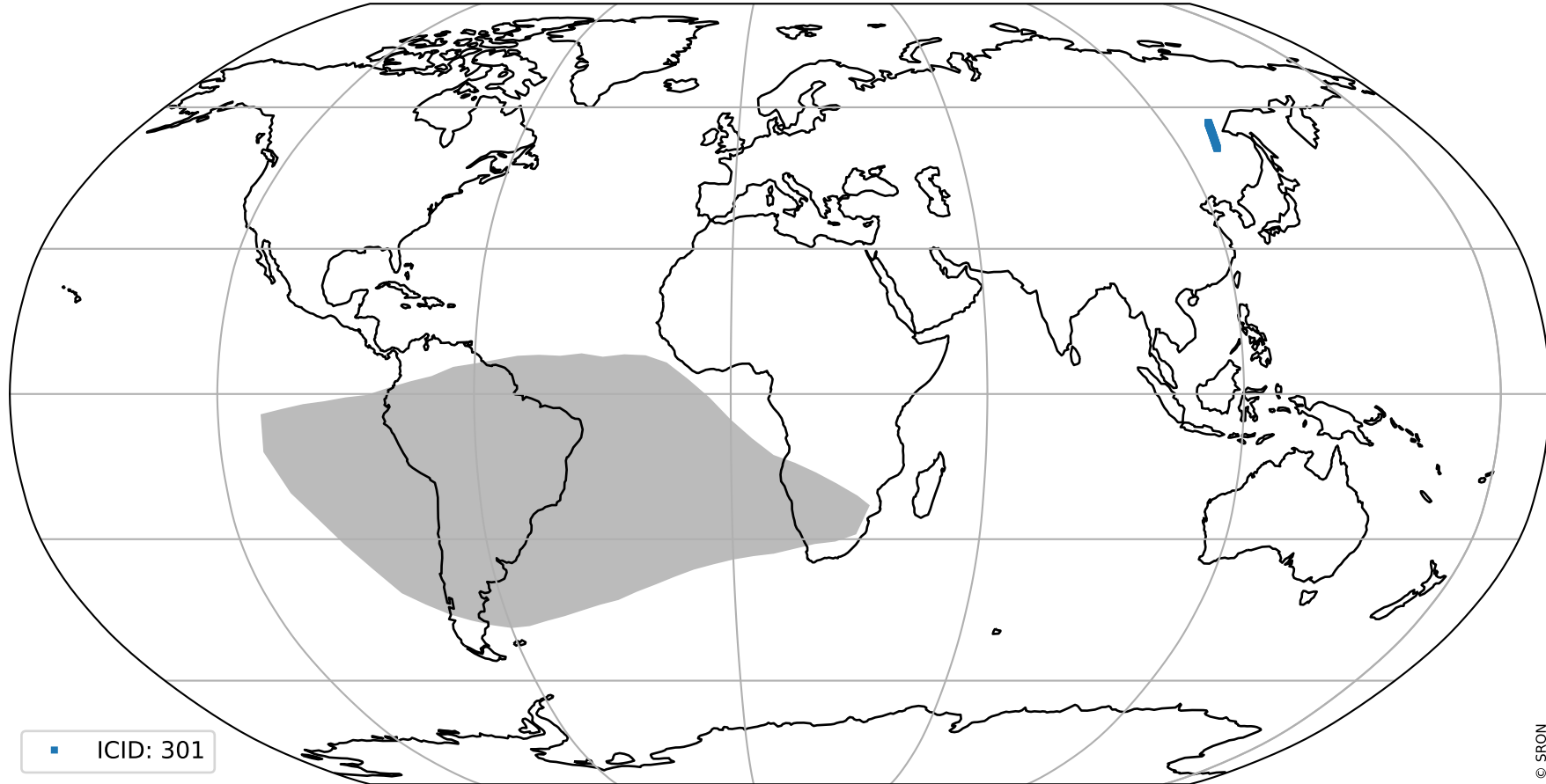
orbits : 20 in [16912, 16957]
coverage : 2021-01-17 / 2021-01-20
created : 2023-08-22T12:04:59

Histograms of pixel-quality



Tropomi SWIR pixel quality (beta nominal) ground-tracks of Sentinel-5P

orbits : 20 in [16912, 16957]
coverage : 2021-01-17 / 2021-01-20
created : 2023-08-22T12:04:59



■ ICID: 301

Tropomi SWIR pixel quality (beta nominal)

orbits : [1867, 16957]
coverage : 2018-02-20 / 2021-01-20
created : 2023-08-22T12:05:00

trend of pixel quality & temperatures

