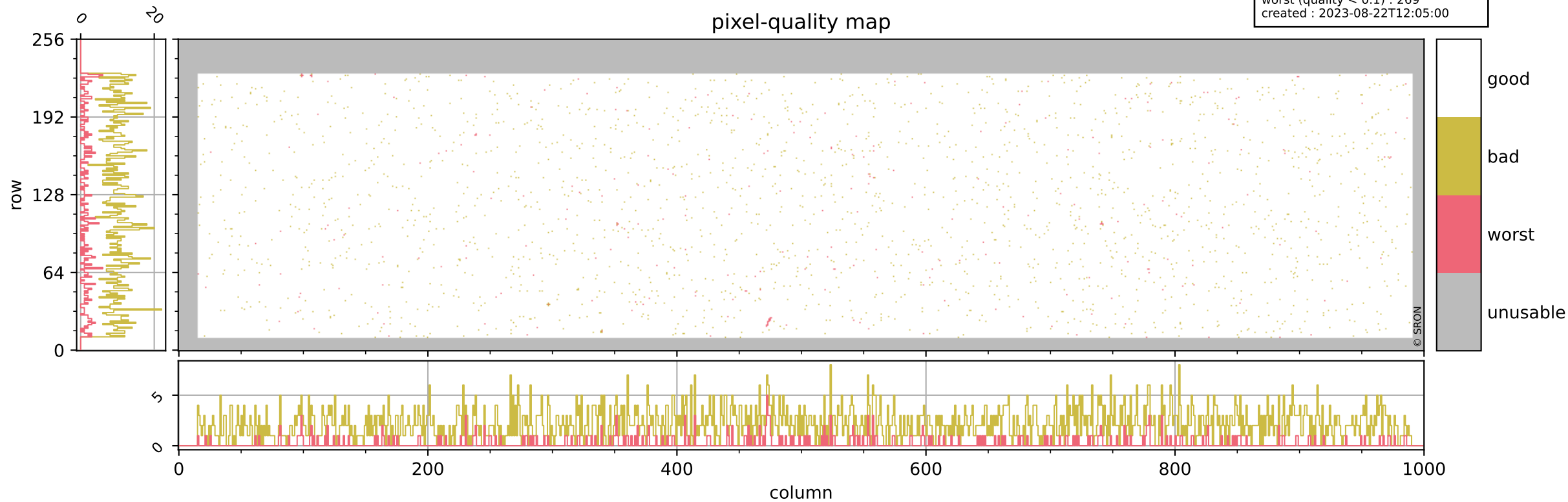


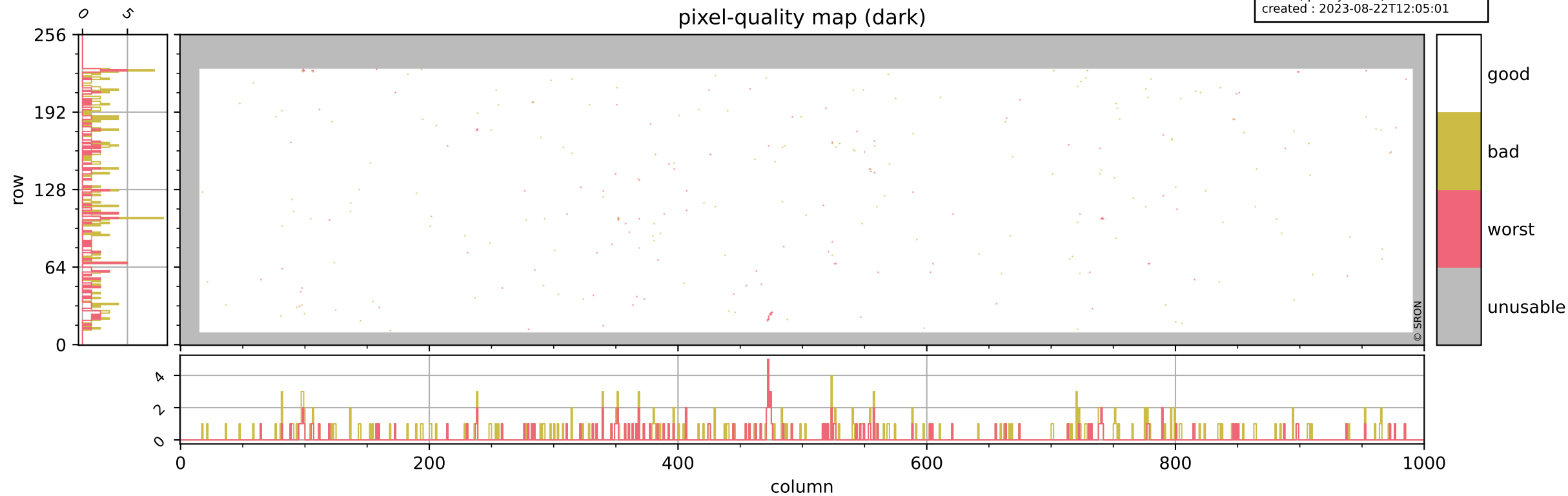
Tropomi SWIR pixel quality (beta nominal)

orbits : 19 in [16957, 17002]
coverage : 2021-01-20 / 2021-01-23
bad (quality < 0.8) : 2196
worst (quality < 0.1) : 269
created : 2023-08-22T12:05:00



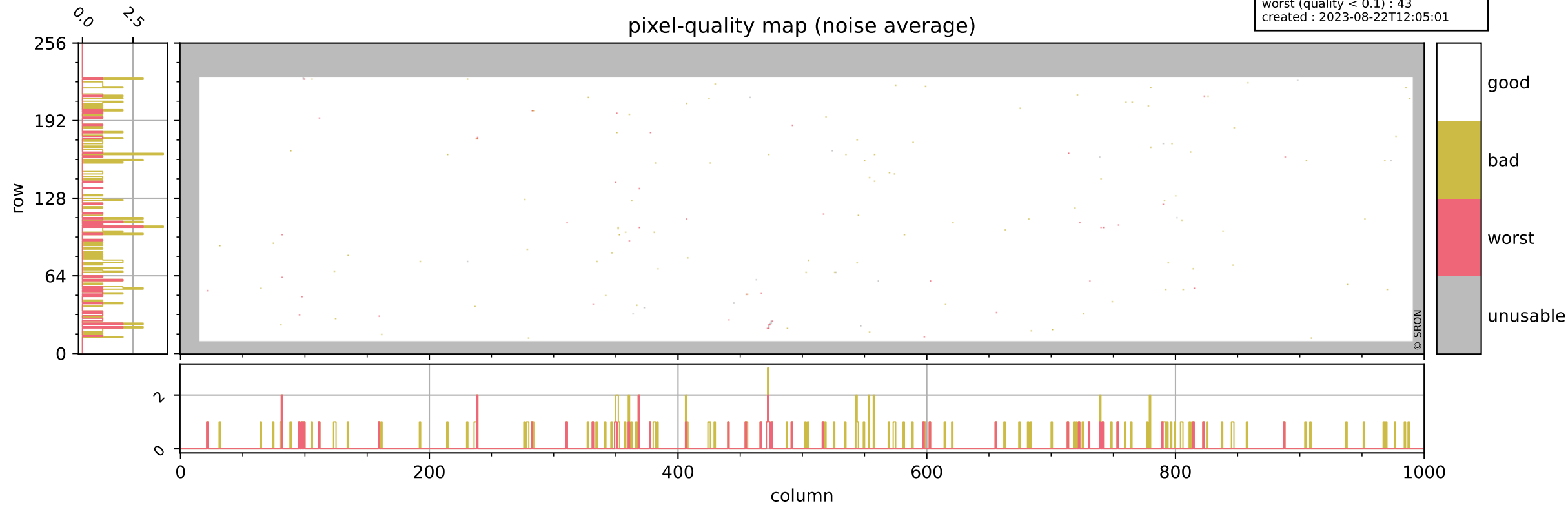
Tropomi SWIR pixel quality (beta nominal)

orbits : 19 in [16957, 17002]
coverage : 2021-01-20 / 2021-01-23
bad (quality < 0.8) : 286
worst (quality < 0.1) : 121
created : 2023-08-22T12:05:01



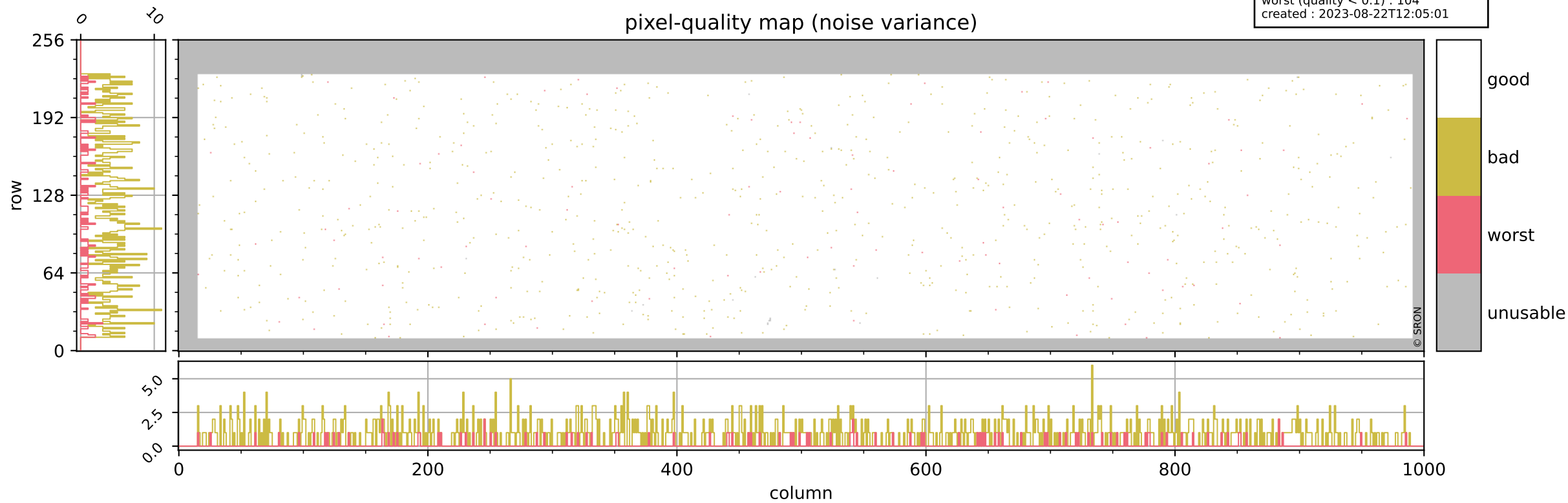
Tropomi SWIR pixel quality (beta nominal)

orbits : 19 in [16957, 17002]
coverage : 2021-01-20 / 2021-01-23
bad (quality < 0.8) : 144
worst (quality < 0.1) : 43
created : 2023-08-22T12:05:01



Tropomi SWIR pixel quality (beta nominal)

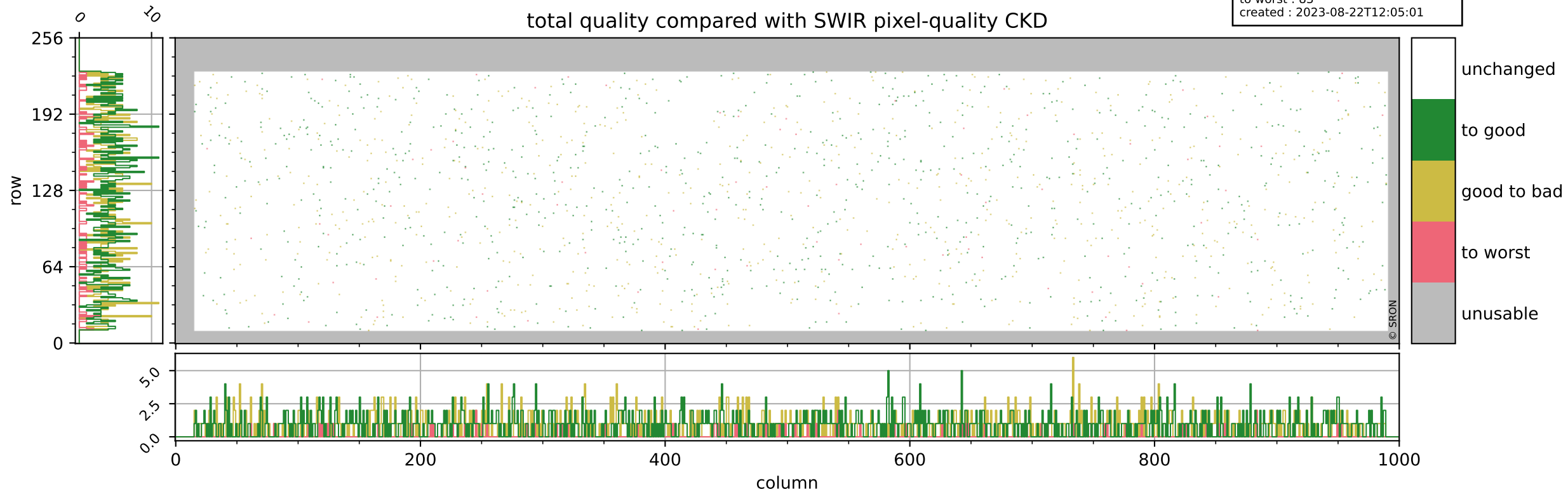
orbits : 19 in [16957, 17002]
coverage : 2021-01-20 / 2021-01-23
bad (quality < 0.8) : 888
worst (quality < 0.1) : 104
created : 2023-08-22T12:05:01



Tropomi SWIR pixel quality (beta nominal)

orbits : 19 in [16957, 17002]
coverage : 2021-01-20 / 2021-01-23
to good : 871
good to bad : 713
to worst : 83
created : 2023-08-22T12:05:01

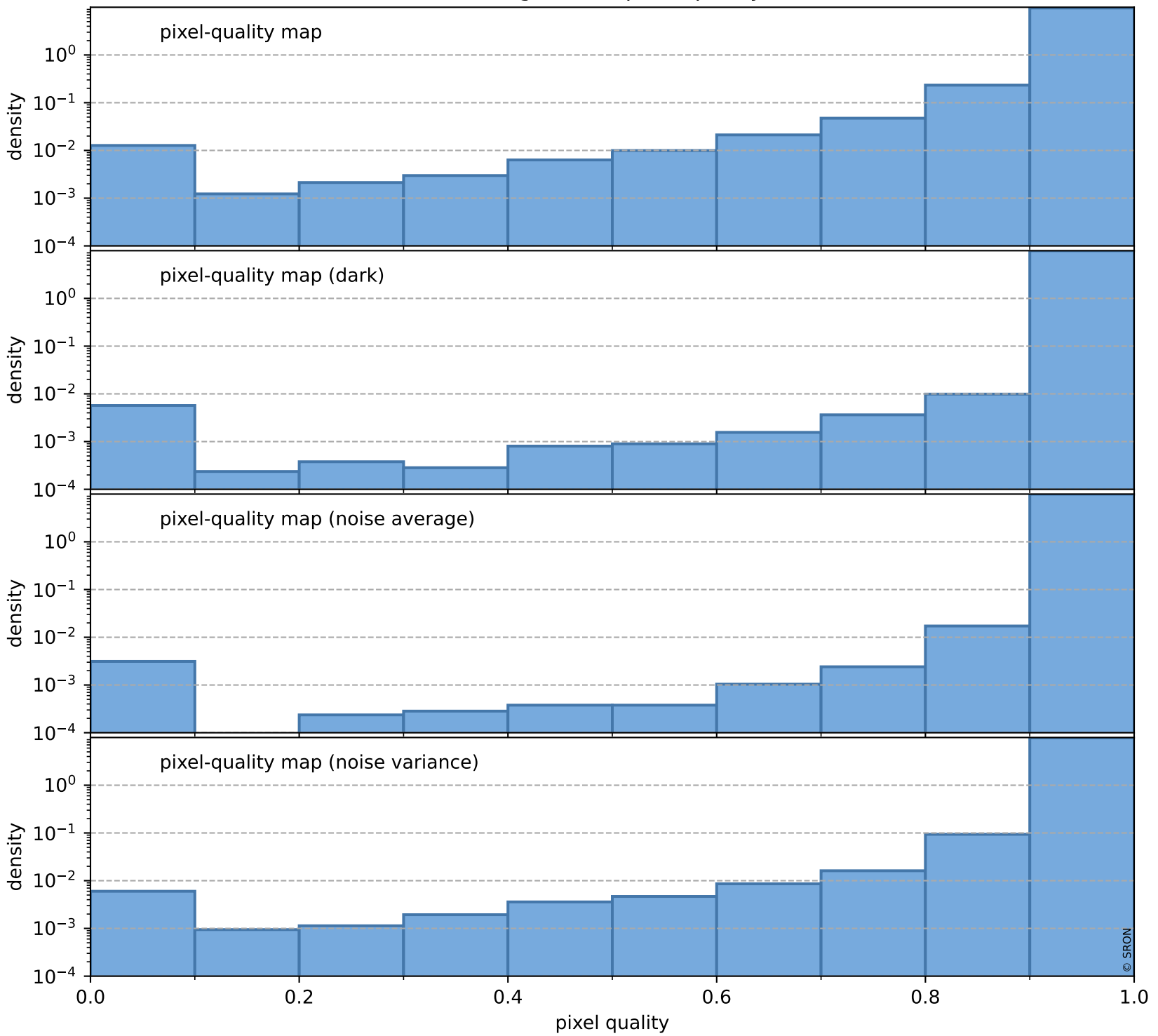
total quality compared with SWIR pixel-quality CKD



Tropomi SWIR pixel quality (beta nominal)

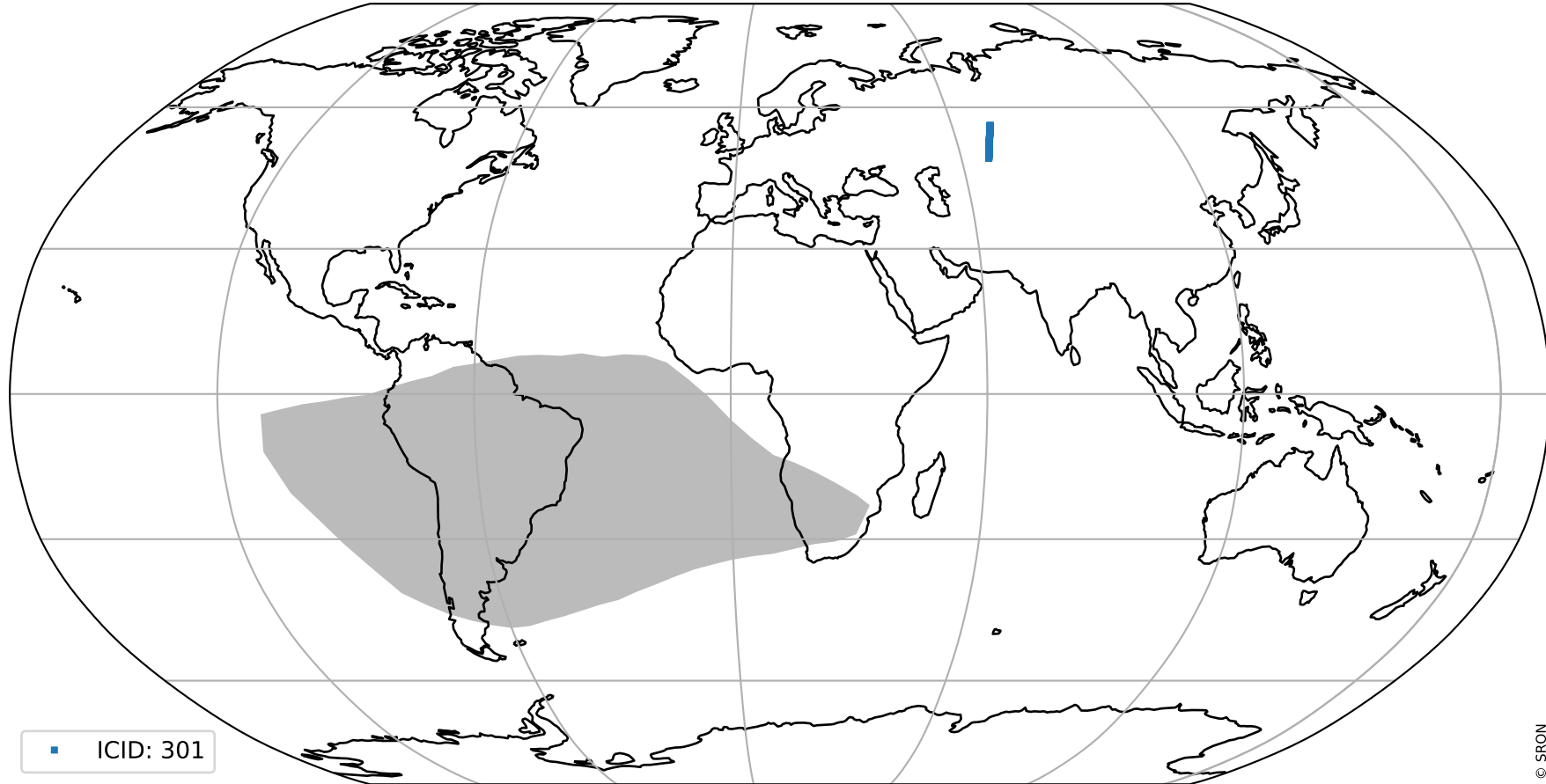
orbits : 19 in [16957, 17002]
coverage : 2021-01-20 / 2021-01-23
created : 2023-08-22T12:05:02

Histograms of pixel-quality



Tropomi SWIR pixel quality (beta nominal) ground-tracks of Sentinel-5P

orbits : 19 in [16957, 17002]
coverage : 2021-01-20 / 2021-01-23
created : 2023-08-22T12:05:02



Tropomi SWIR pixel quality (beta nominal)

orbits : [1867, 17002]
coverage : 2018-02-20 / 2021-01-23
created : 2023-08-22T12:05:02

trend of pixel quality & temperatures

