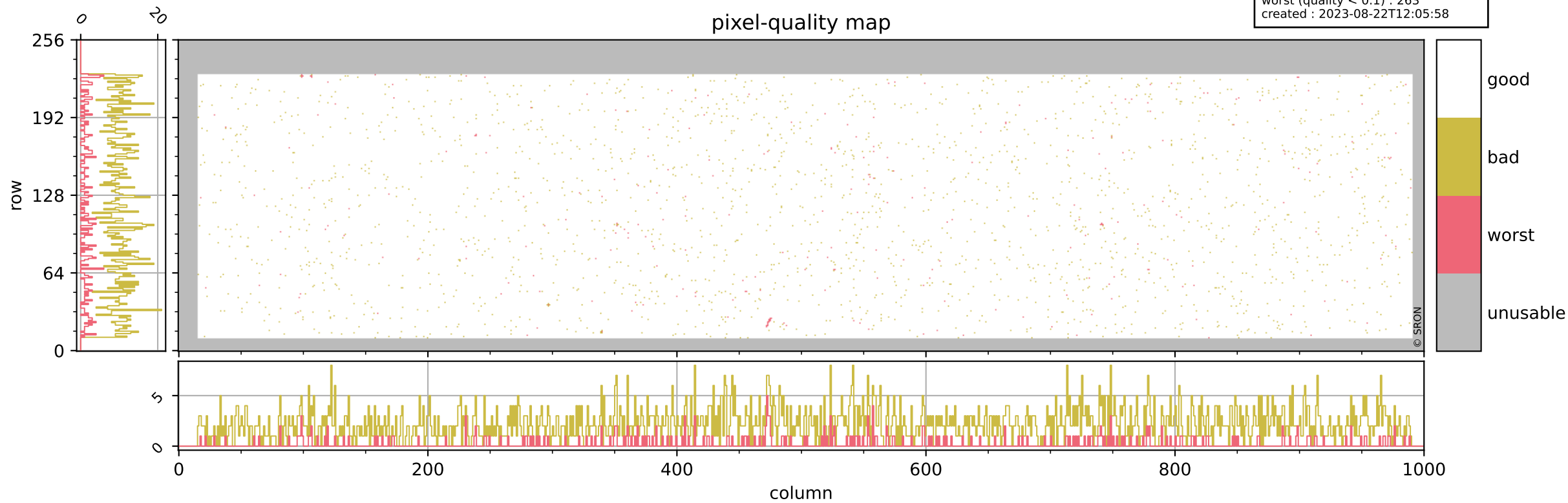


# Tropomi SWIR pixel quality (beta nominal)

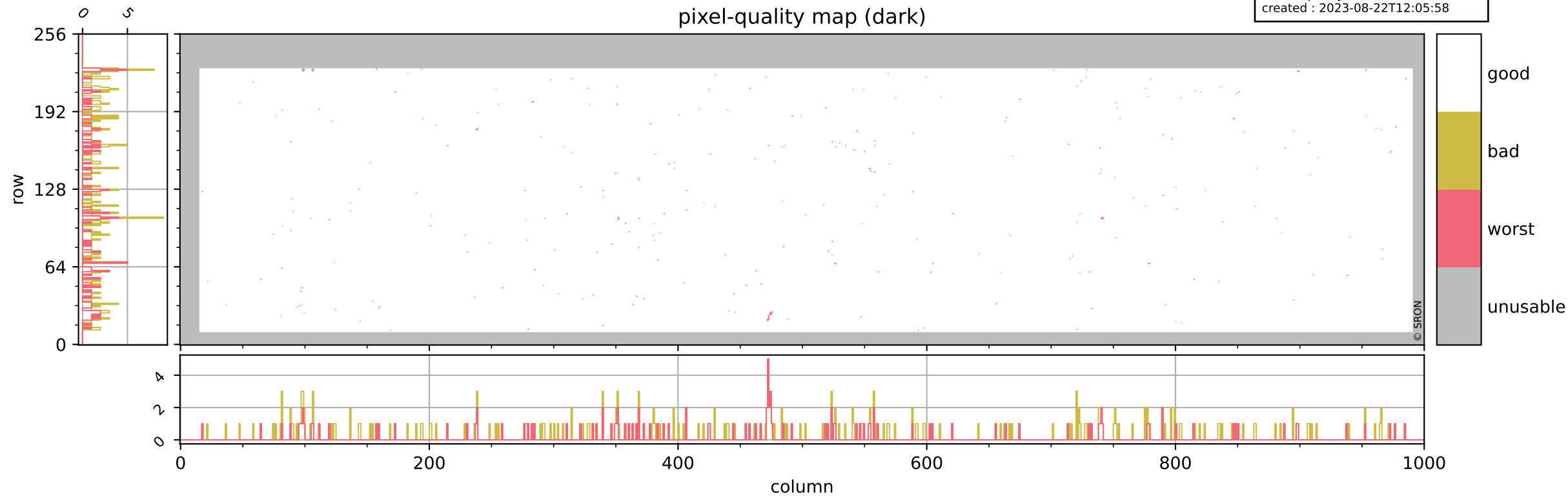
orbits : 20 in [17902, 17947]  
coverage : 2021-03-28 / 2021-03-31  
bad (quality < 0.8) : 2218  
worst (quality < 0.1) : 263  
created : 2023-08-22T12:05:58

## pixel-quality map



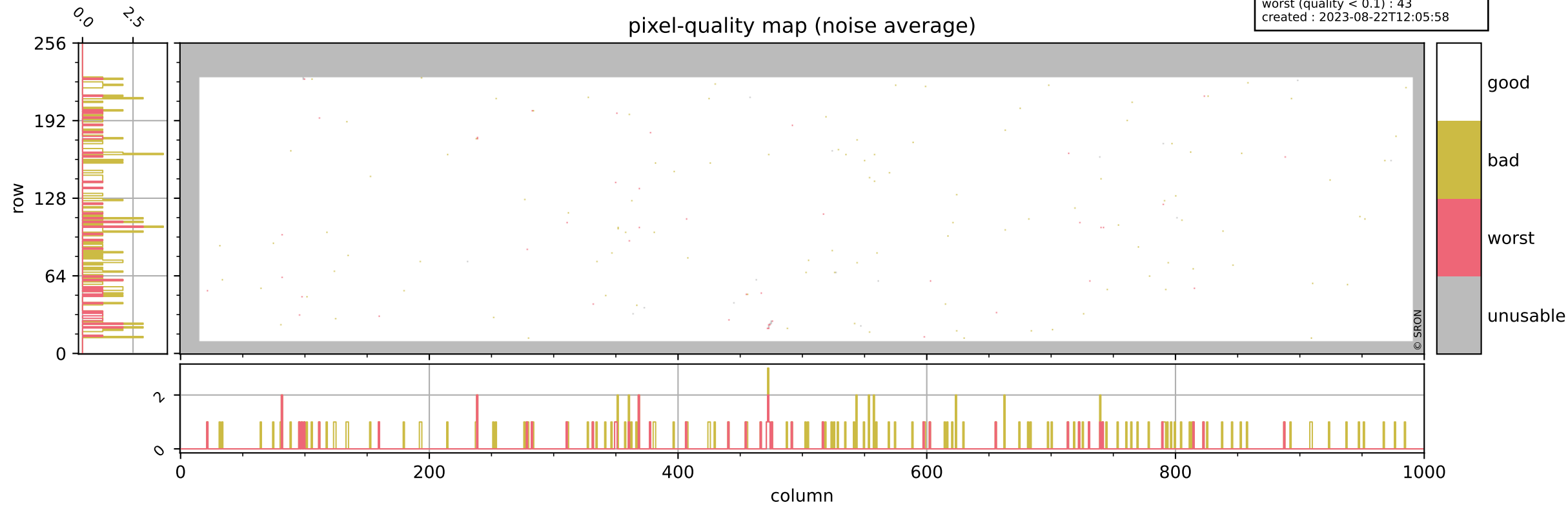
# Tropomi SWIR pixel quality (beta nominal)

orbits : 20 in [17902, 17947]  
coverage : 2021-03-28 / 2021-03-31  
bad (quality < 0.8) : 292  
worst (quality < 0.1) : 119  
created : 2023-08-22T12:05:58



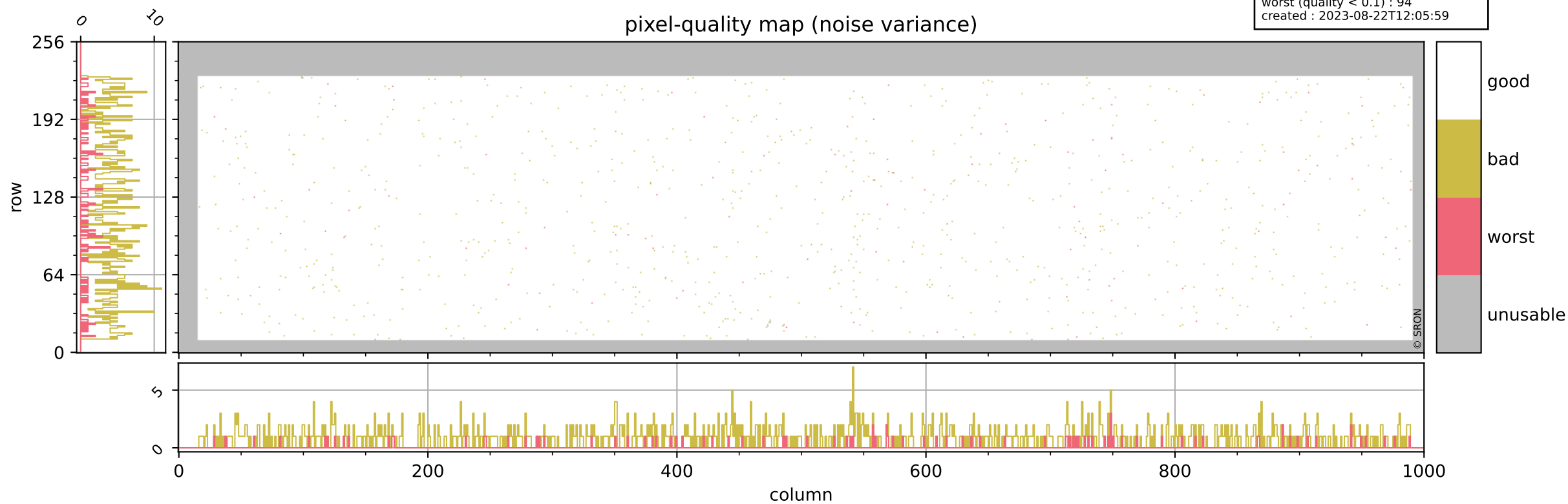
# Tropomi SWIR pixel quality (beta nominal)

orbits : 20 in [17902, 17947]  
coverage : 2021-03-28 / 2021-03-31  
bad (quality < 0.8) : 153  
worst (quality < 0.1) : 43  
created : 2023-08-22T12:05:58



# Tropomi SWIR pixel quality (beta nominal)

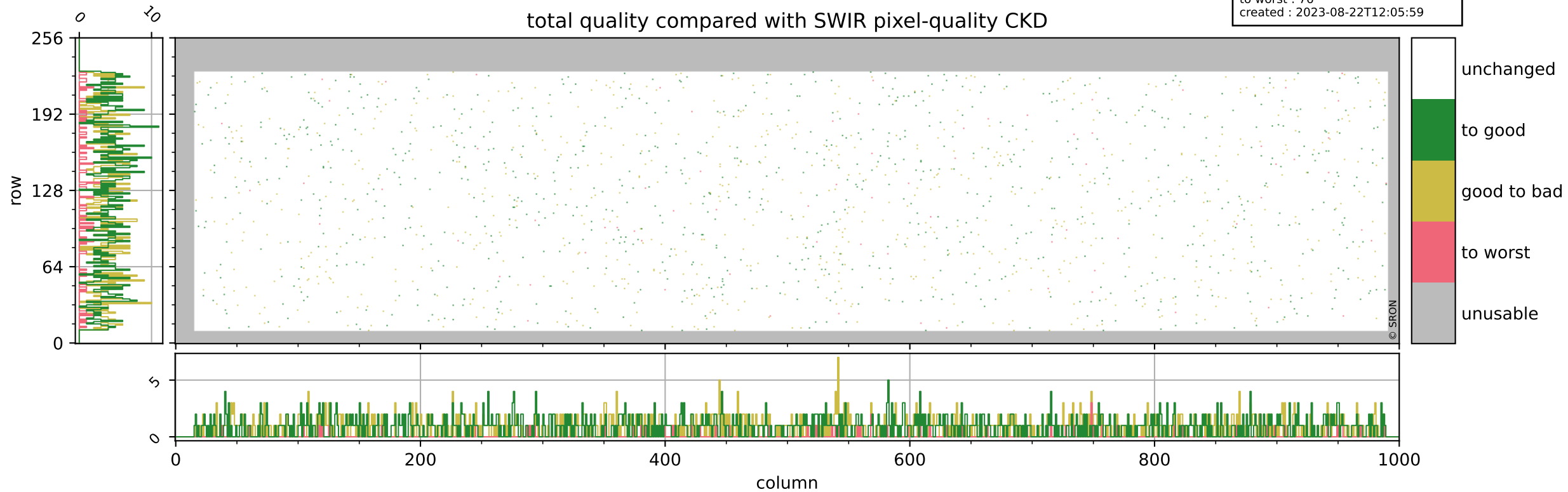
orbits : 20 in [17902, 17947]  
coverage : 2021-03-28 / 2021-03-31  
bad (quality < 0.8) : 897  
worst (quality < 0.1) : 94  
created : 2023-08-22T12:05:59



# Tropomi SWIR pixel quality (beta nominal)

orbits : 20 in [17902, 17947]  
coverage : 2021-03-28 / 2021-03-31  
to good : 858  
good to bad : 726  
to worst : 76  
created : 2023-08-22T12:05:59

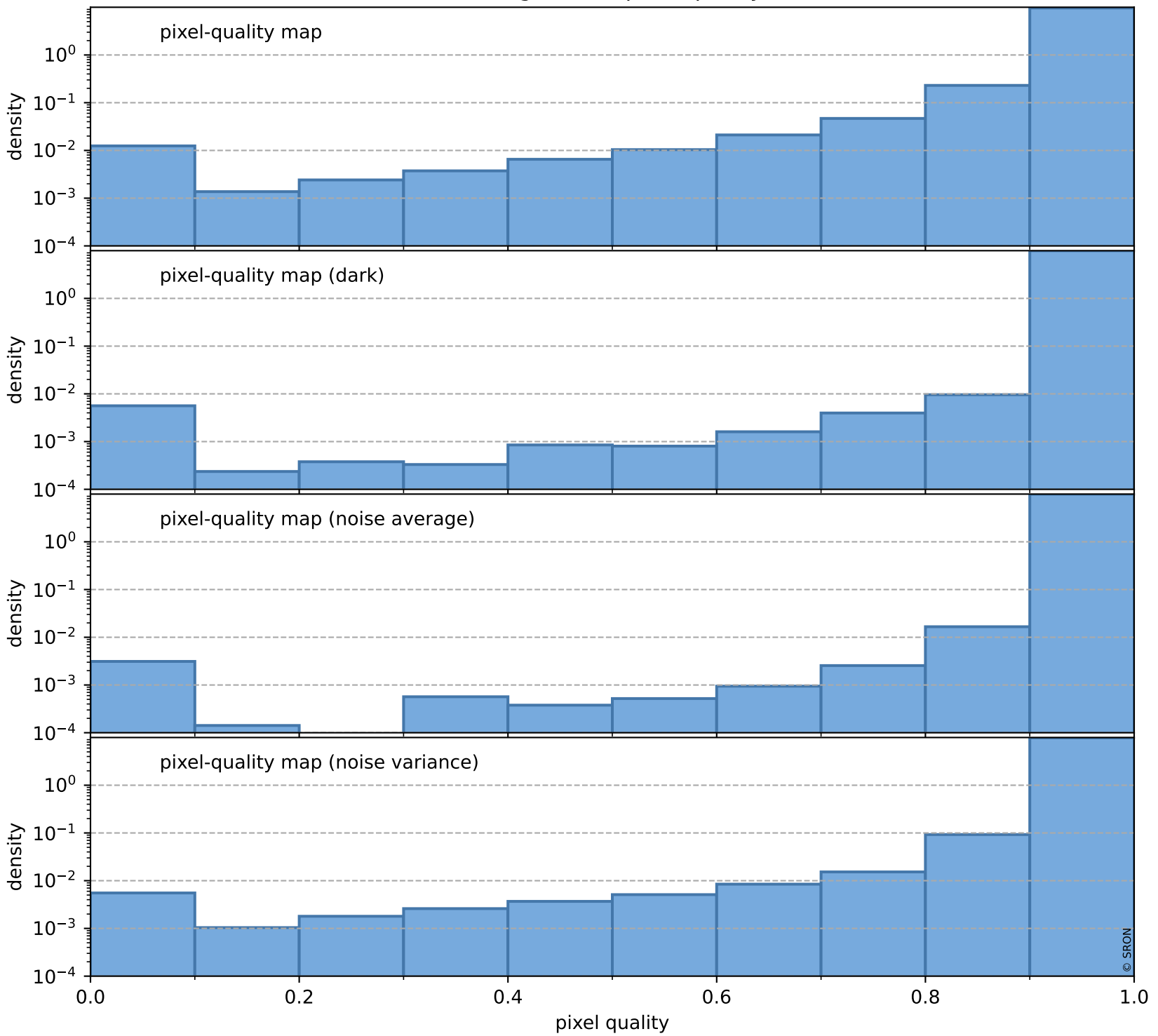
## total quality compared with SWIR pixel-quality CKD



# Tropomi SWIR pixel quality (beta nominal)

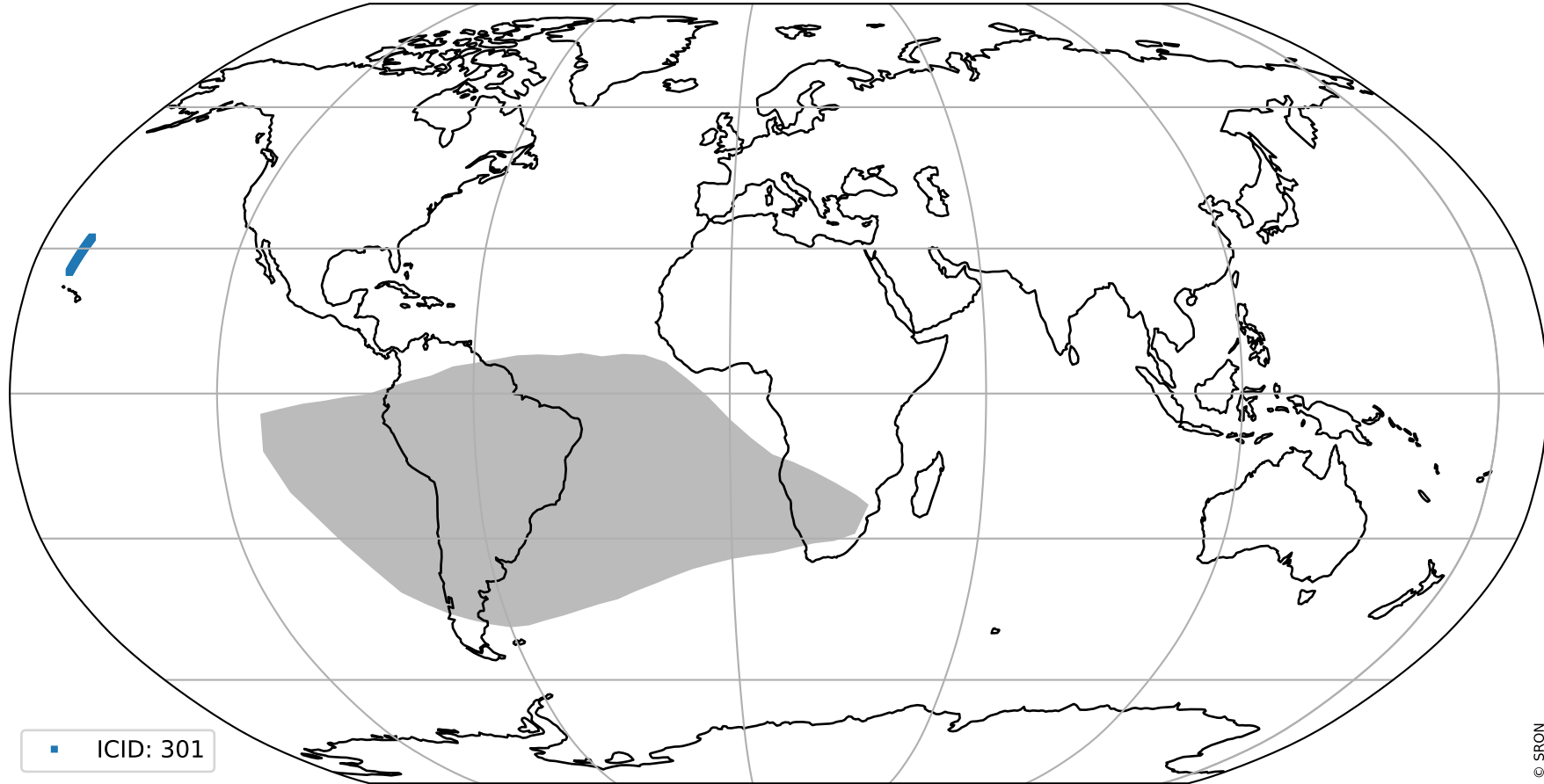
orbits : 20 in [17902, 17947]  
coverage : 2021-03-28 / 2021-03-31  
created : 2023-08-22T12:05:59

## Histograms of pixel-quality



# Tropomi SWIR pixel quality (beta nominal) ground-tracks of Sentinel-5P

orbits : 20 in [17902, 17947]  
coverage : 2021-03-28 / 2021-03-31  
created : 2023-08-22T12:06:00



# Tropomi SWIR pixel quality (beta nominal)

orbits : [1867, 17947]  
coverage : 2018-02-20 / 2021-03-31  
created : 2023-08-22T12:06:00

## trend of pixel quality & temperatures

