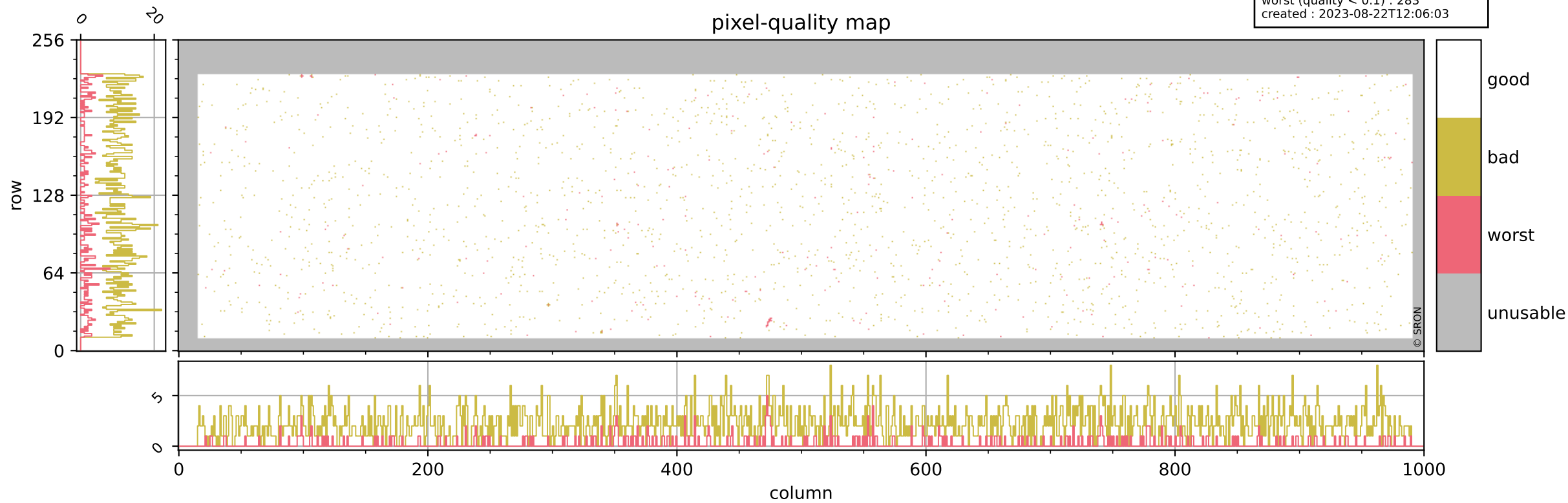


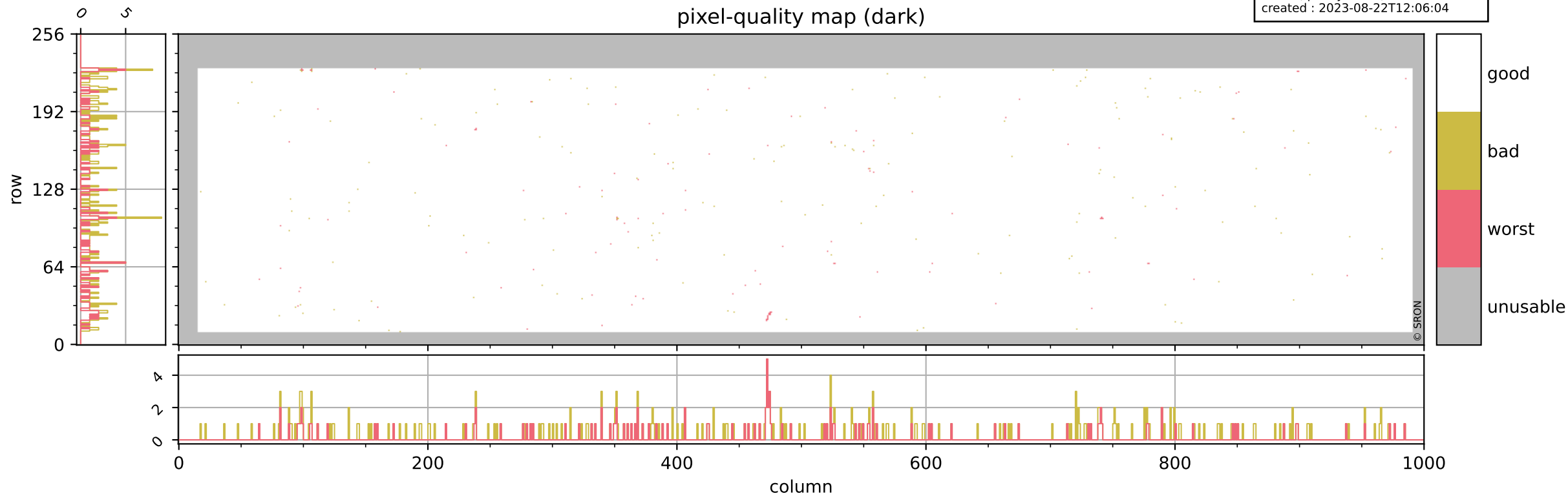
Tropomi SWIR pixel quality (beta nominal)

orbits : 20 in [17992, 18037]
coverage : 2021-04-03 / 2021-04-06
bad (quality < 0.8) : 2275
worst (quality < 0.1) : 283
created : 2023-08-22T12:06:03



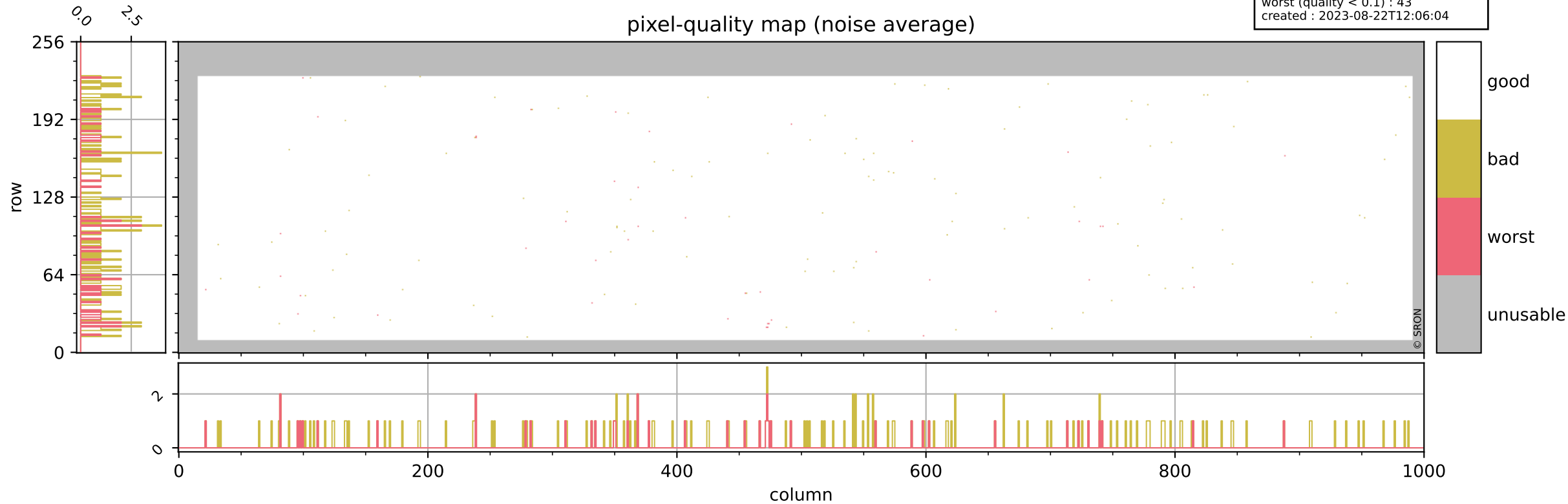
Tropomi SWIR pixel quality (beta nominal)

orbits : 20 in [17992, 18037]
coverage : 2021-04-03 / 2021-04-06
bad (quality < 0.8) : 290
worst (quality < 0.1) : 119
created : 2023-08-22T12:06:04



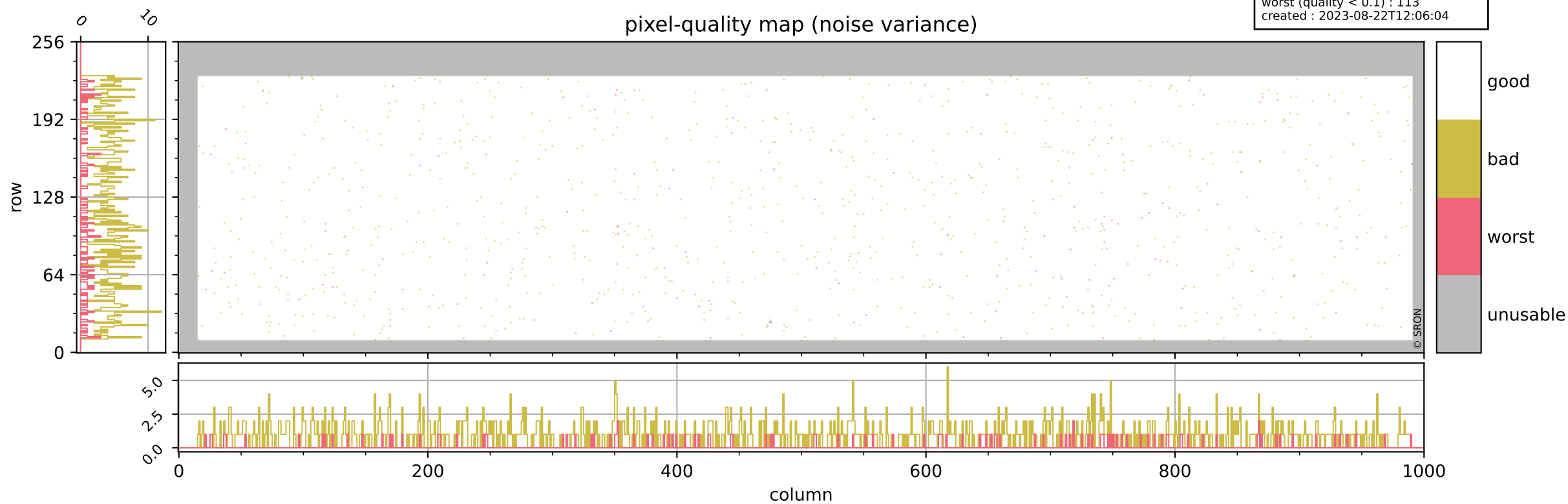
Tropomi SWIR pixel quality (beta nominal)

orbits : 20 in [17992, 18037]
coverage : 2021-04-03 / 2021-04-06
bad (quality < 0.8) : 160
worst (quality < 0.1) : 43
created : 2023-08-22T12:06:04



Tropomi SWIR pixel quality (beta nominal)

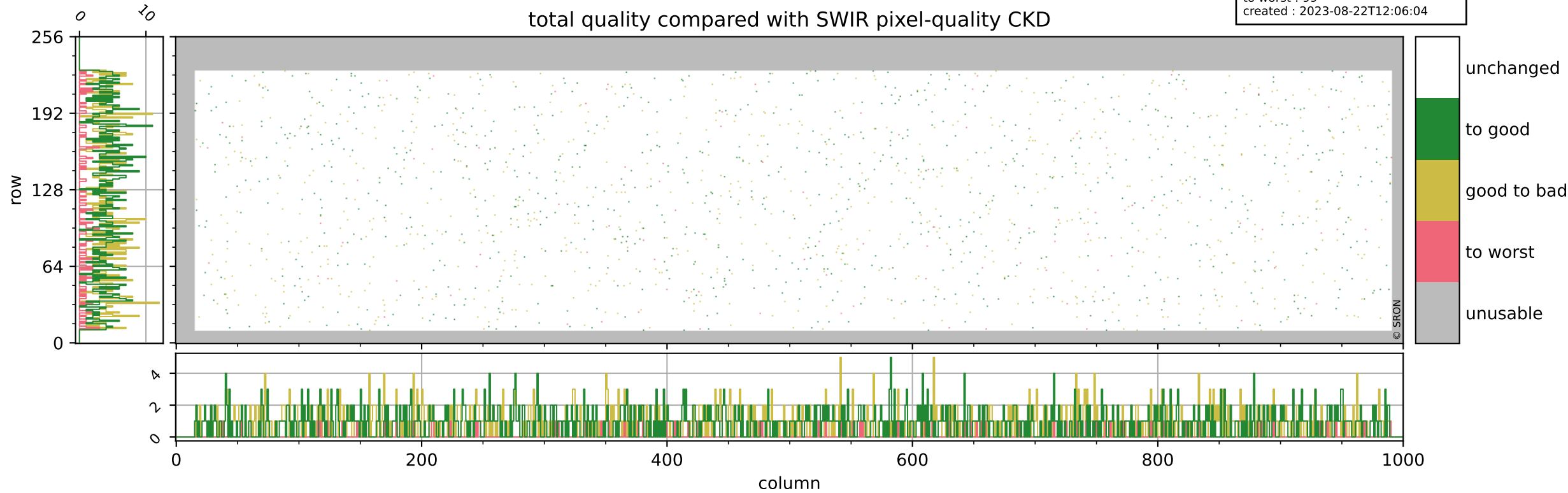
orbits : 20 in [17992, 18037]
coverage : 2021-04-03 / 2021-04-06
bad (quality < 0.8) : 960
worst (quality < 0.1) : 113
created : 2023-08-22T12:06:04



Tropomi SWIR pixel quality (beta nominal)

orbits : 20 in [17992, 18037]
coverage : 2021-04-03 / 2021-04-06
to good : 855
good to bad : 760
to worst : 99
created : 2023-08-22T12:06:04

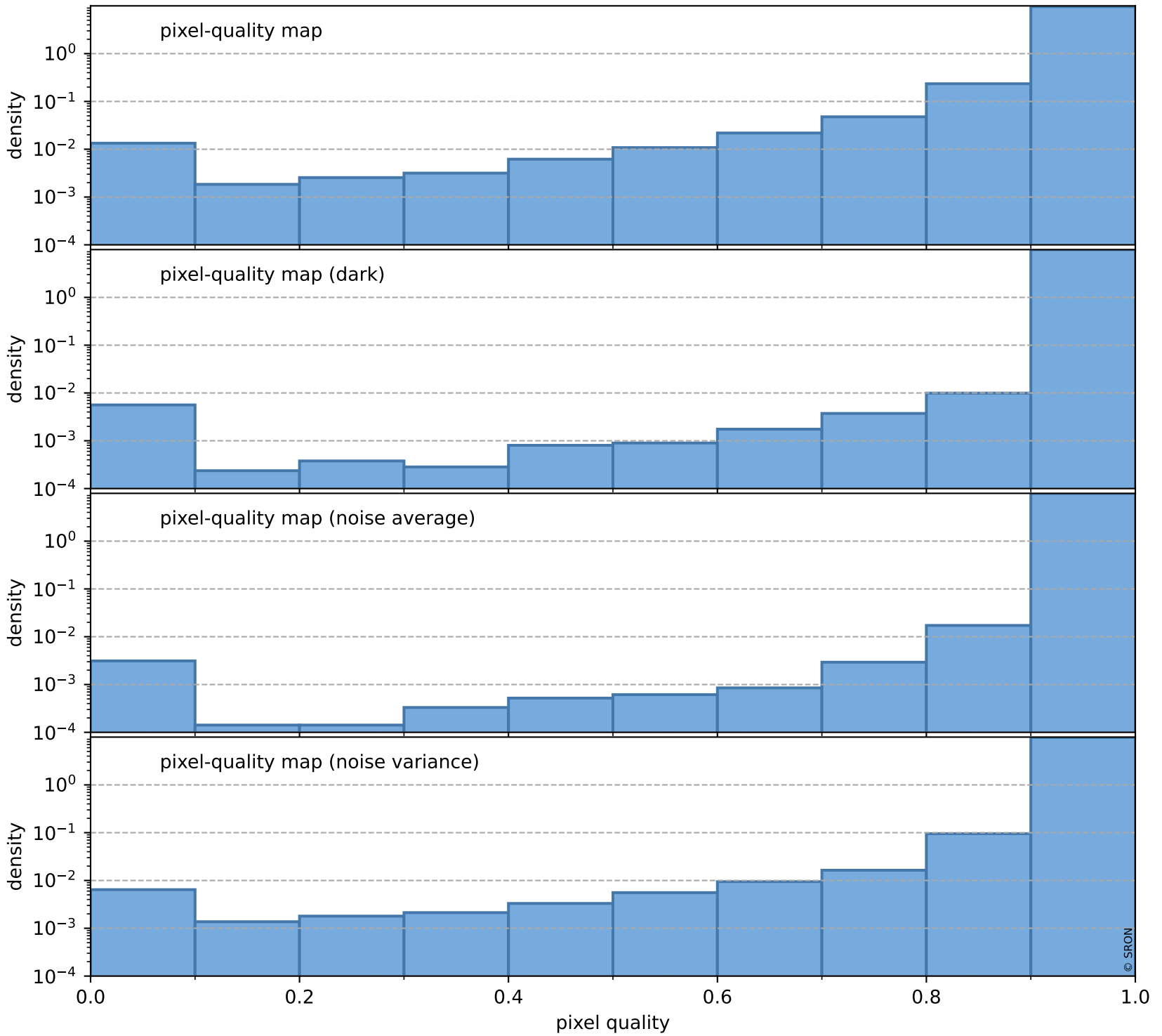
total quality compared with SWIR pixel-quality CKD



Tropomi SWIR pixel quality (beta nominal)

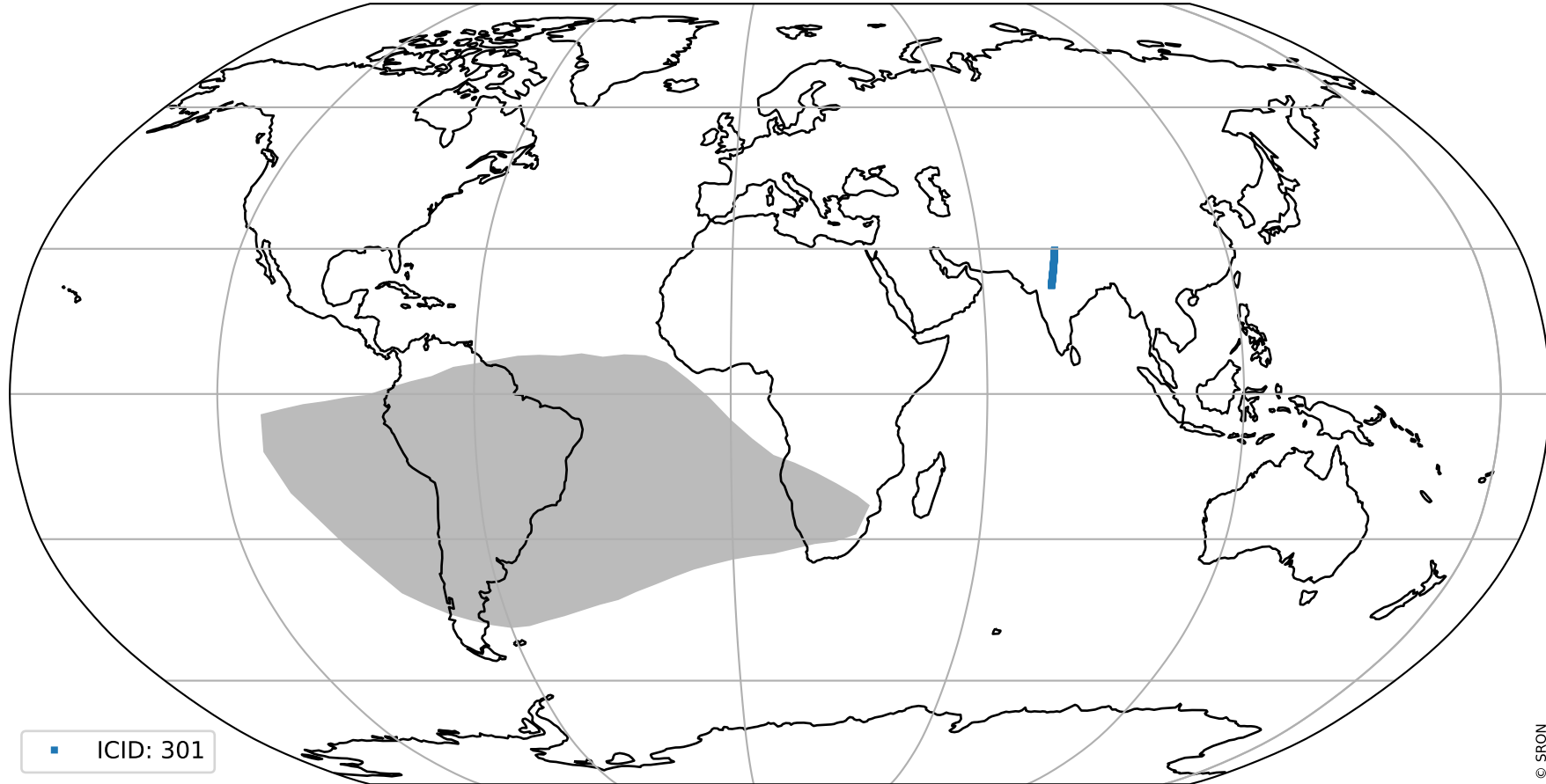
orbits : 20 in [17992, 18037]
coverage : 2021-04-03 / 2021-04-06
created : 2023-08-22T12:06:05

Histograms of pixel-quality



Tropomi SWIR pixel quality (beta nominal) ground-tracks of Sentinel-5P

orbits : 20 in [17992, 18037]
coverage : 2021-04-03 / 2021-04-06
created : 2023-08-22T12:06:05



Tropomi SWIR pixel quality (beta nominal)

orbits : [1867, 18037]
coverage : 2018-02-20 / 2021-04-06
created : 2023-08-22T12:06:05

trend of pixel quality & temperatures

