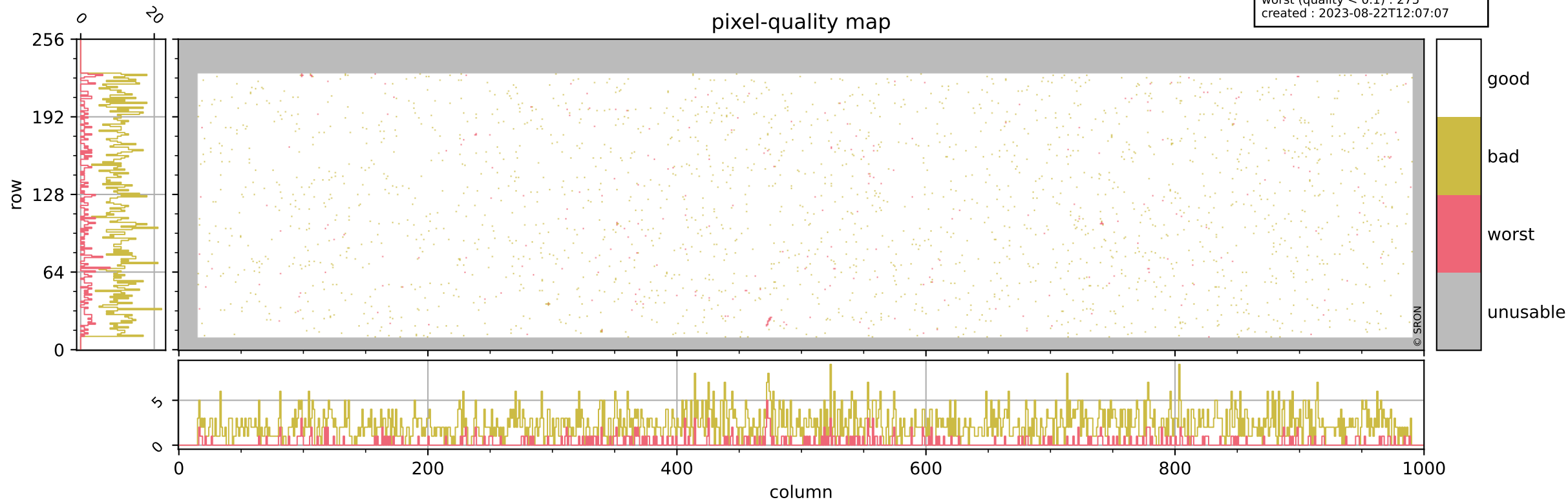


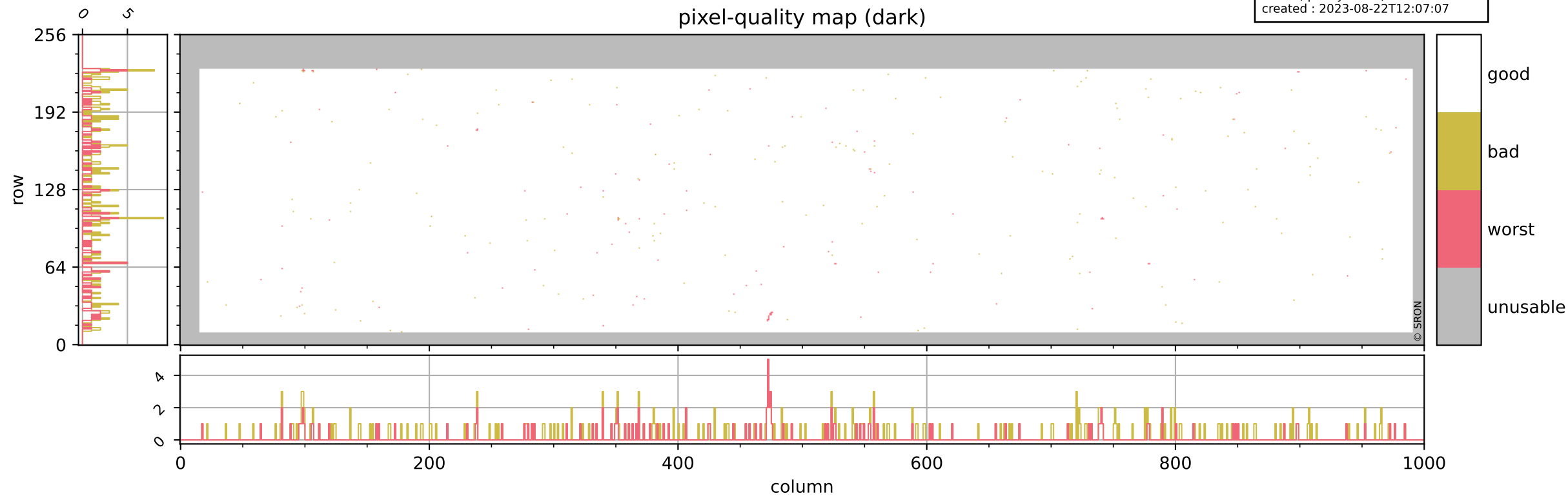
Tropomi SWIR pixel quality (beta nominal)

orbits : 18 in [19027, 19072]
coverage : 2021-06-15 / 2021-06-18
bad (quality < 0.8) : 2321
worst (quality < 0.1) : 275
created : 2023-08-22T12:07:07



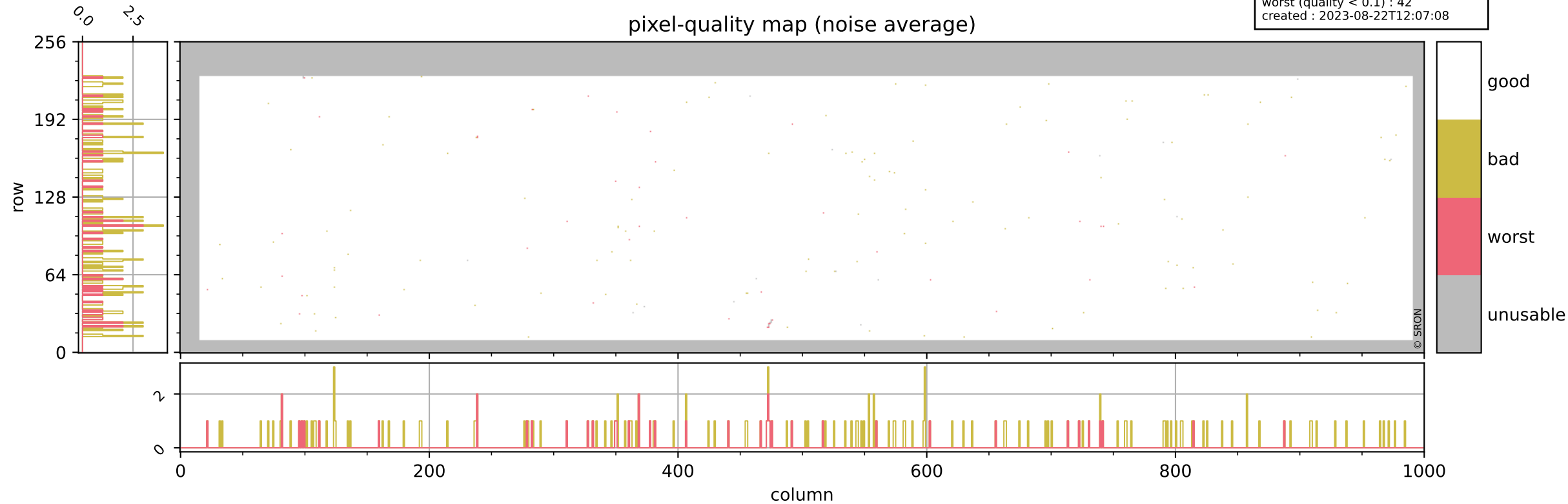
Tropomi SWIR pixel quality (beta nominal)

orbits : 18 in [19027, 19072]
coverage : 2021-06-15 / 2021-06-18
bad (quality < 0.8) : 297
worst (quality < 0.1) : 120
created : 2023-08-22T12:07:07



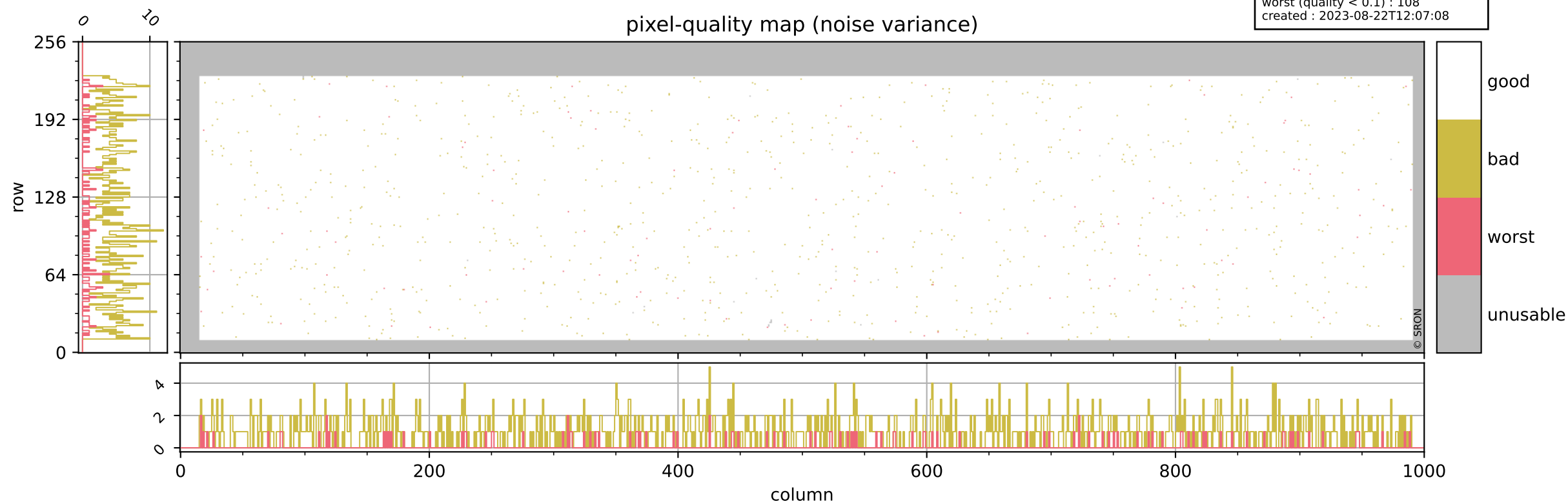
Tropomi SWIR pixel quality (beta nominal)

orbits : 18 in [19027, 19072]
coverage : 2021-06-15 / 2021-06-18
bad (quality < 0.8) : 157
worst (quality < 0.1) : 42
created : 2023-08-22T12:07:08



Tropomi SWIR pixel quality (beta nominal)

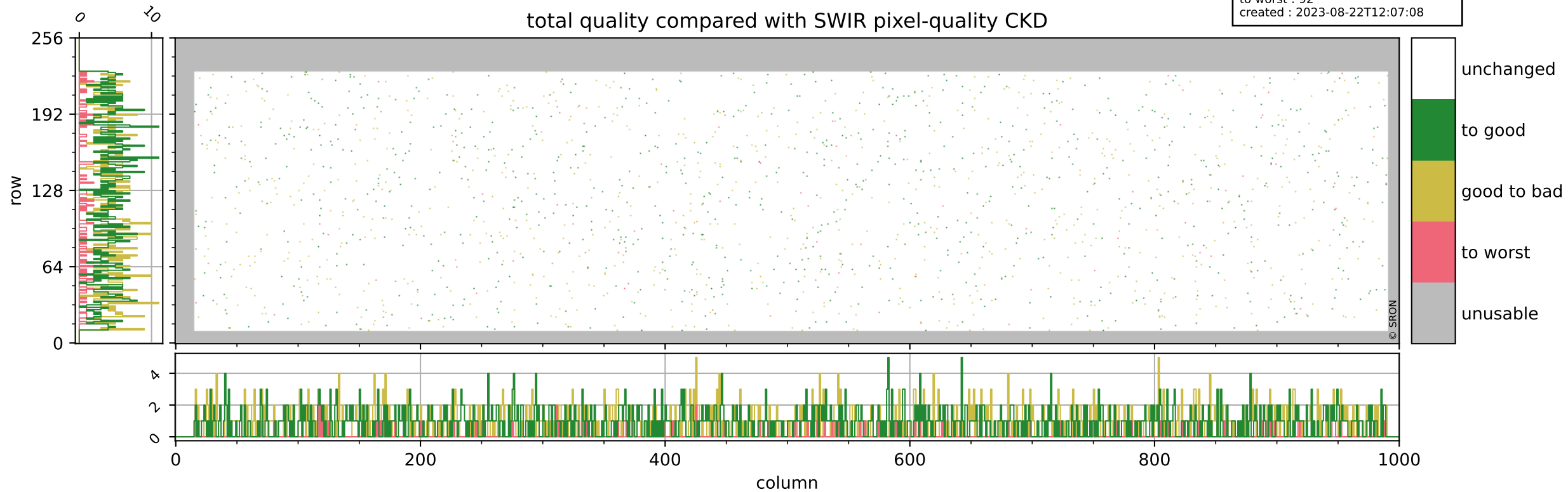
orbits : 18 in [19027, 19072]
coverage : 2021-06-15 / 2021-06-18
bad (quality < 0.8) : 1002
worst (quality < 0.1) : 108
created : 2023-08-22T12:07:08



Tropomi SWIR pixel quality (beta nominal)

orbits : 18 in [19027, 19072]
coverage : 2021-06-15 / 2021-06-18
to good : 867
good to bad : 824
to worst : 92
created : 2023-08-22T12:07:08

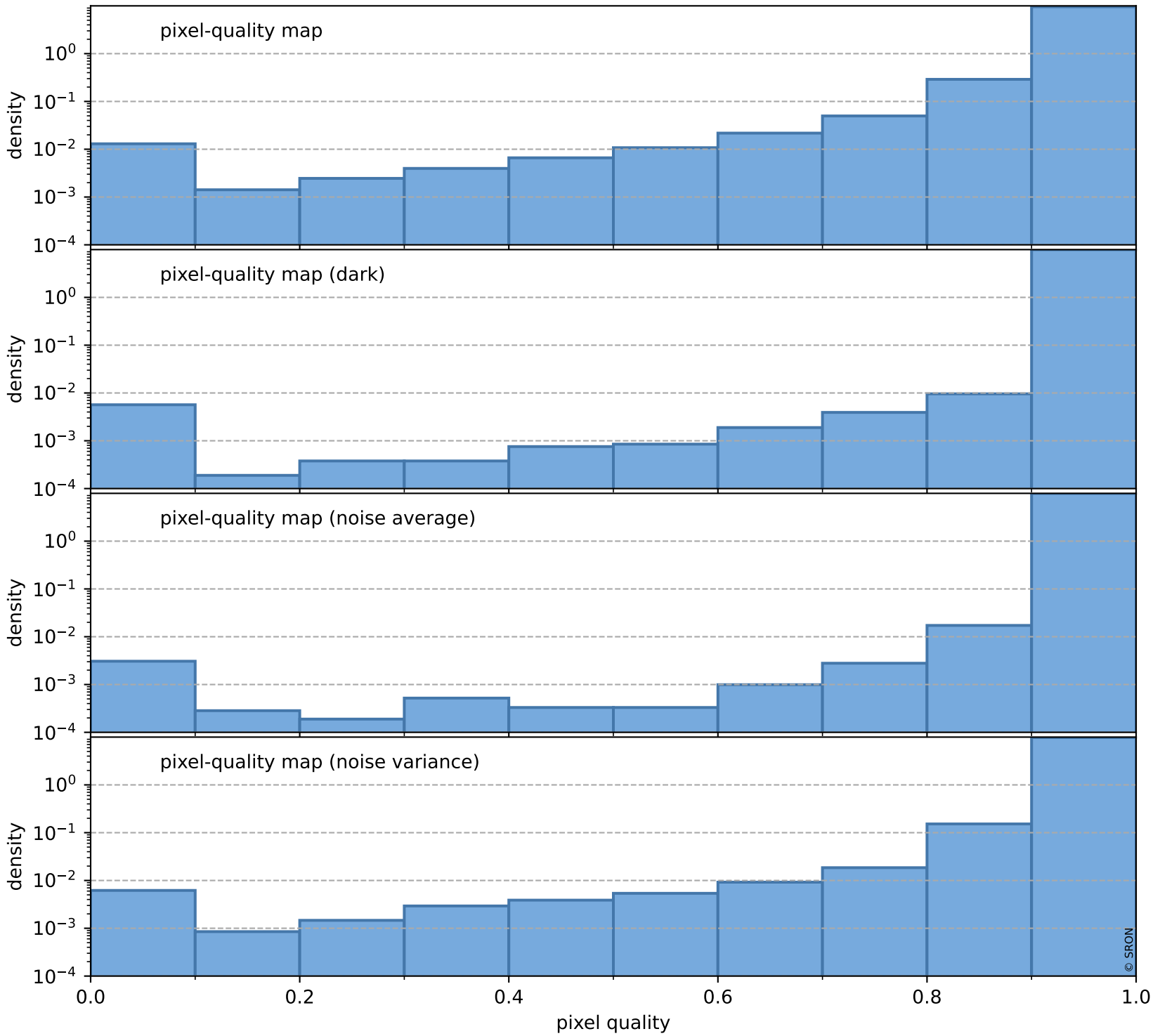
total quality compared with SWIR pixel-quality CKD



Tropomi SWIR pixel quality (beta nominal)

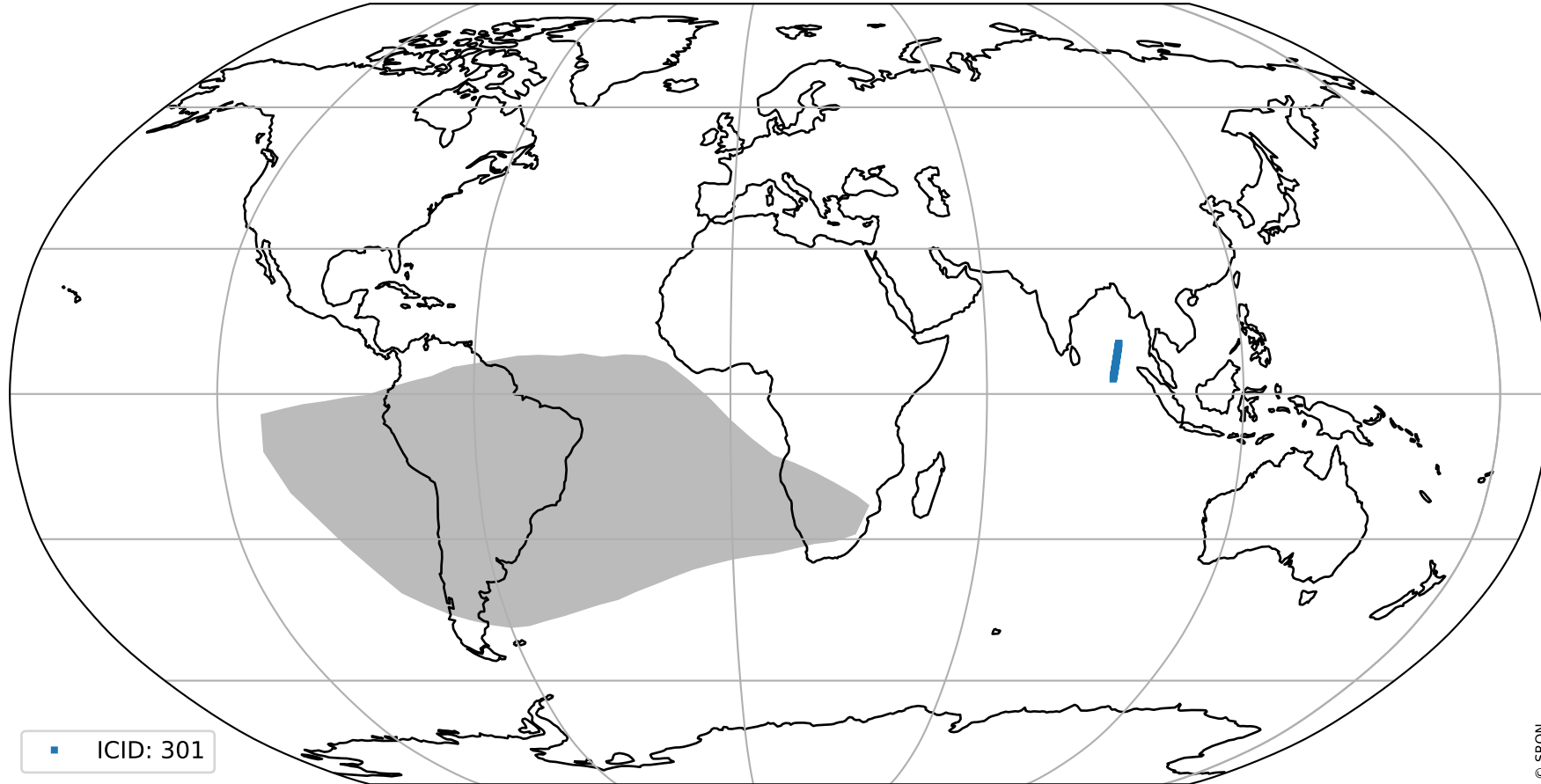
orbits : 18 in [19027, 19072]
coverage : 2021-06-15 / 2021-06-18
created : 2023-08-22T12:07:09

Histograms of pixel-quality



Tropomi SWIR pixel quality (beta nominal) ground-tracks of Sentinel-5P

orbits : 18 in [19027, 19072]
coverage : 2021-06-15 / 2021-06-18
created : 2023-08-22T12:07:09



Tropomi SWIR pixel quality (beta nominal)

orbits : [1867, 19072]
coverage : 2018-02-20 / 2021-06-18
created : 2023-08-22T12:07:09

trend of pixel quality & temperatures

