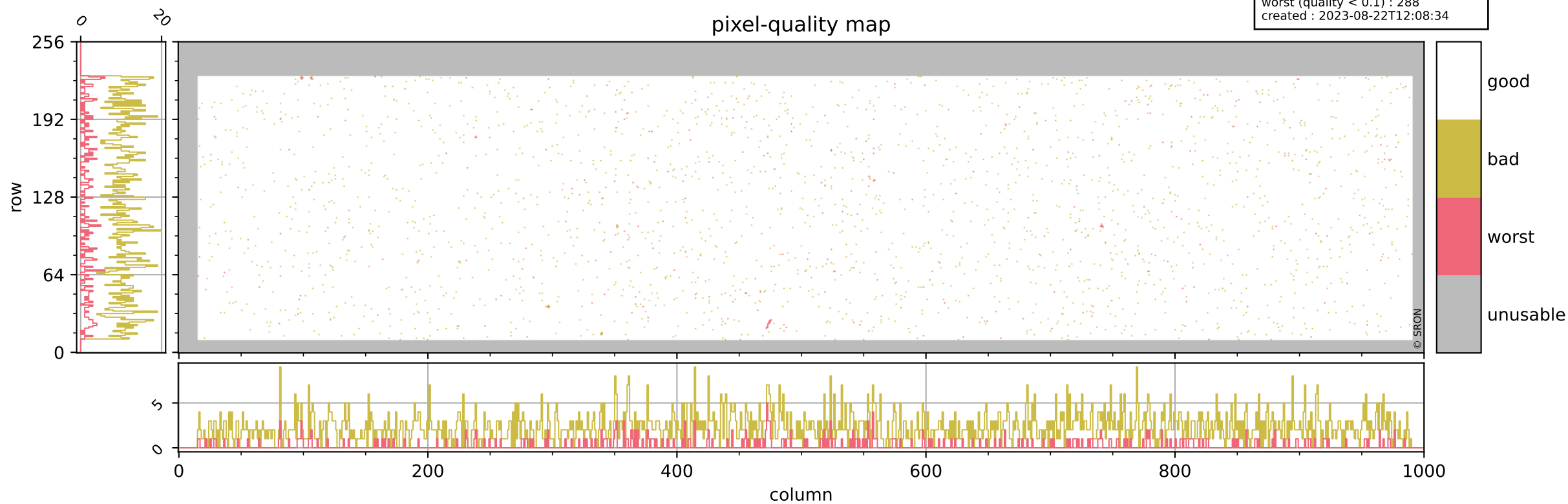


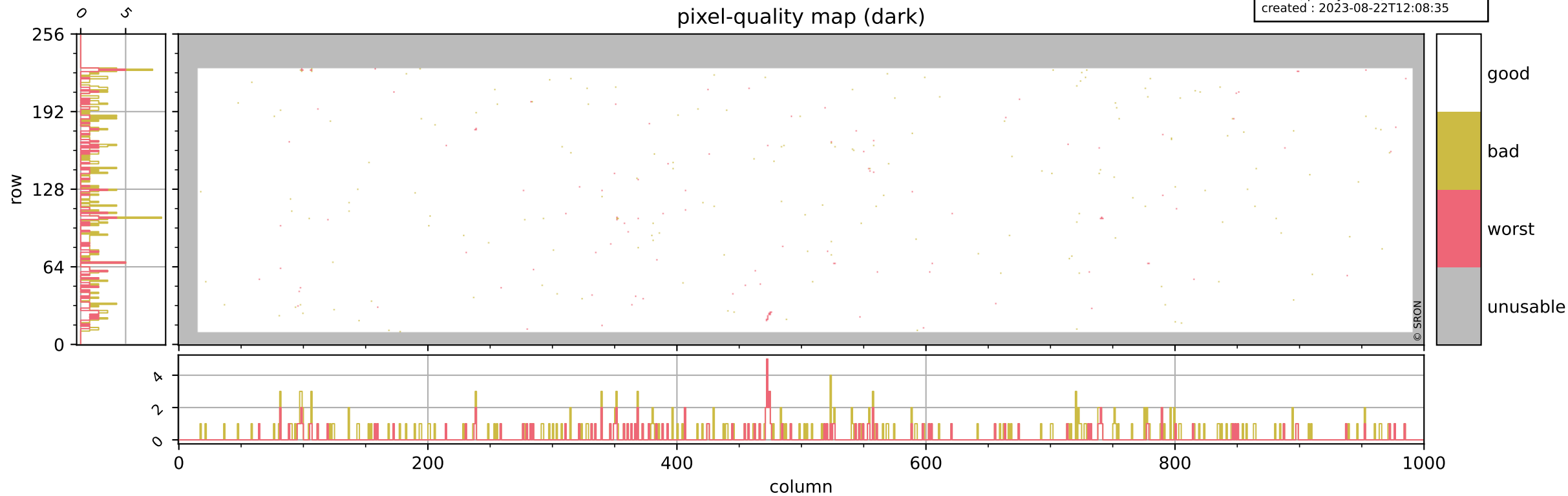
Tropomi SWIR pixel quality (beta nominal)

orbits : 20 in [20422, 20467]
coverage : 2021-09-22 / 2021-09-24
bad (quality < 0.8) : 2321
worst (quality < 0.1) : 288
created : 2023-08-22T12:08:34



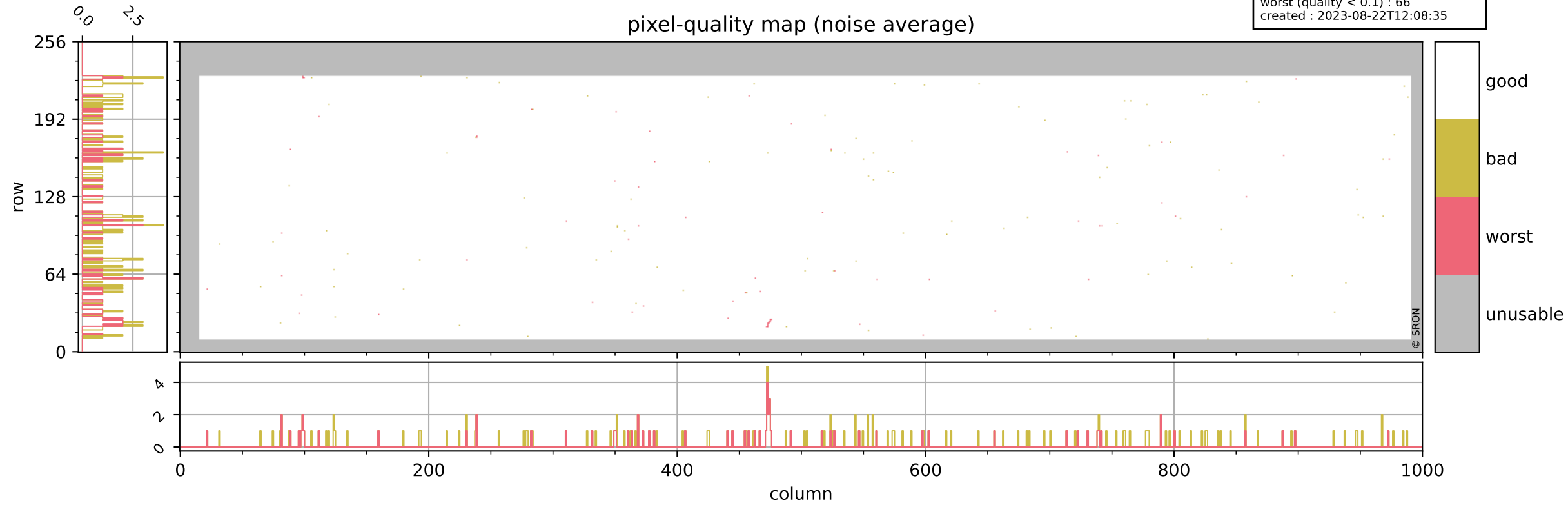
Tropomi SWIR pixel quality (beta nominal)

orbits : 20 in [20422, 20467]
coverage : 2021-09-22 / 2021-09-24
bad (quality < 0.8) : 293
worst (quality < 0.1) : 119
created : 2023-08-22T12:08:35



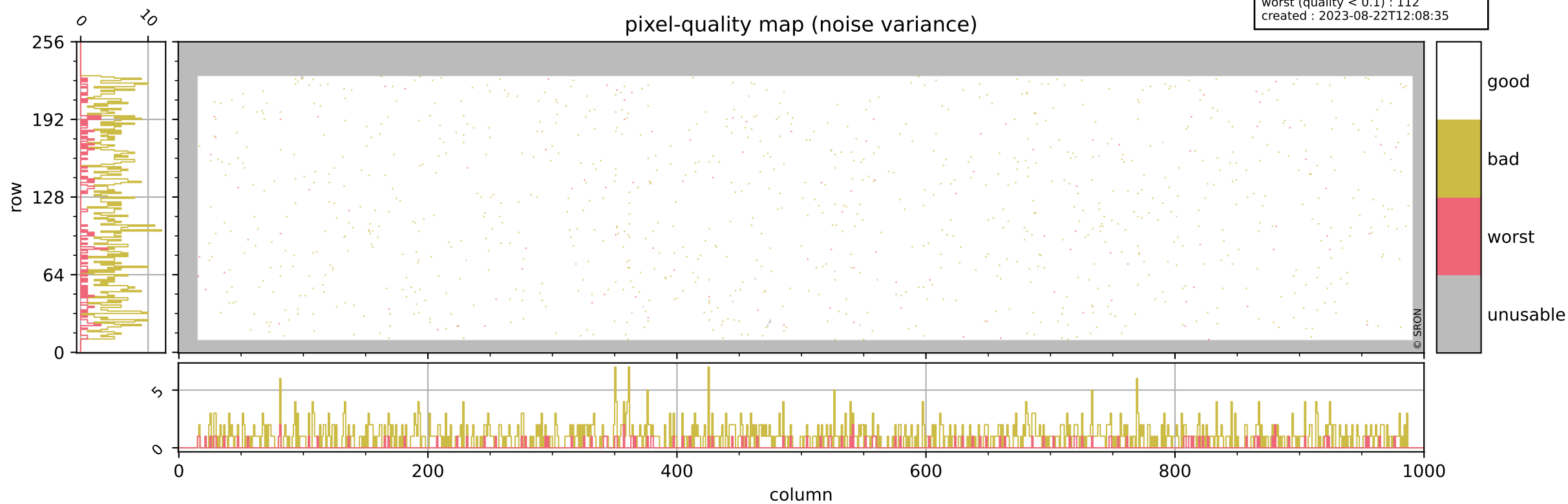
Tropomi SWIR pixel quality (beta nominal)

orbits : 20 in [20422, 20467]
coverage : 2021-09-22 / 2021-09-24
bad (quality < 0.8) : 167
worst (quality < 0.1) : 66
created : 2023-08-22T12:08:35



Tropomi SWIR pixel quality (beta nominal)

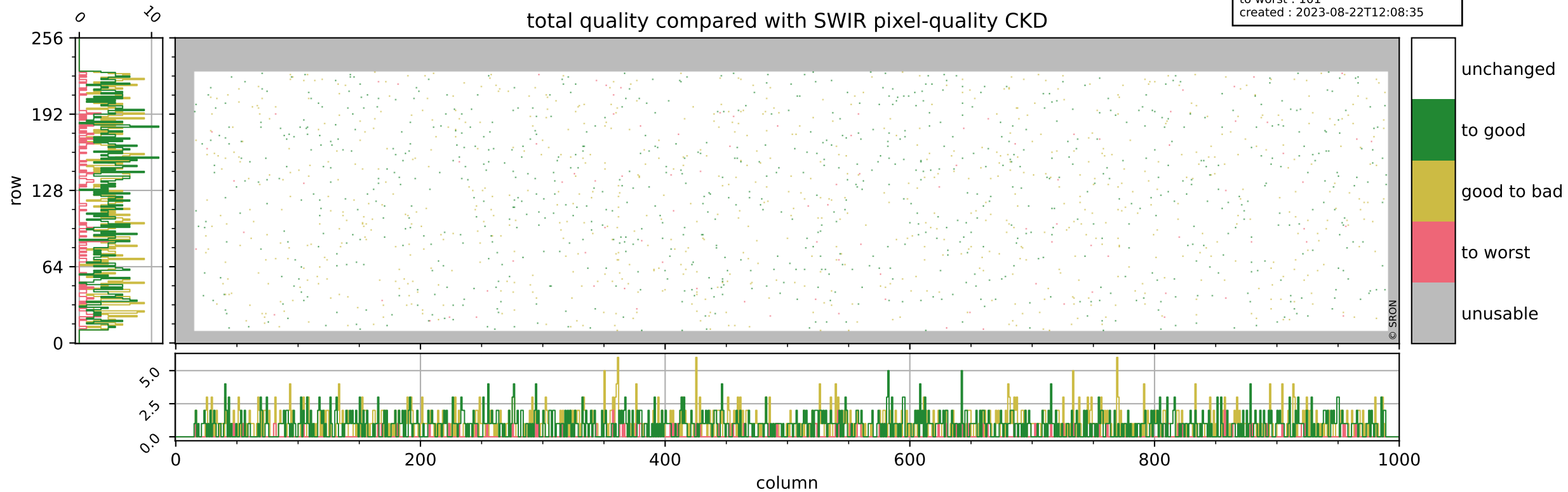
orbits : 20 in [20422, 20467]
coverage : 2021-09-22 / 2021-09-24
bad (quality < 0.8) : 1013
worst (quality < 0.1) : 112
created : 2023-08-22T12:08:35



Tropomi SWIR pixel quality (beta nominal)

orbits : 20 in [20422, 20467]
coverage : 2021-09-22 / 2021-09-24
to good : 857
good to bad : 807
to worst : 101
created : 2023-08-22T12:08:35

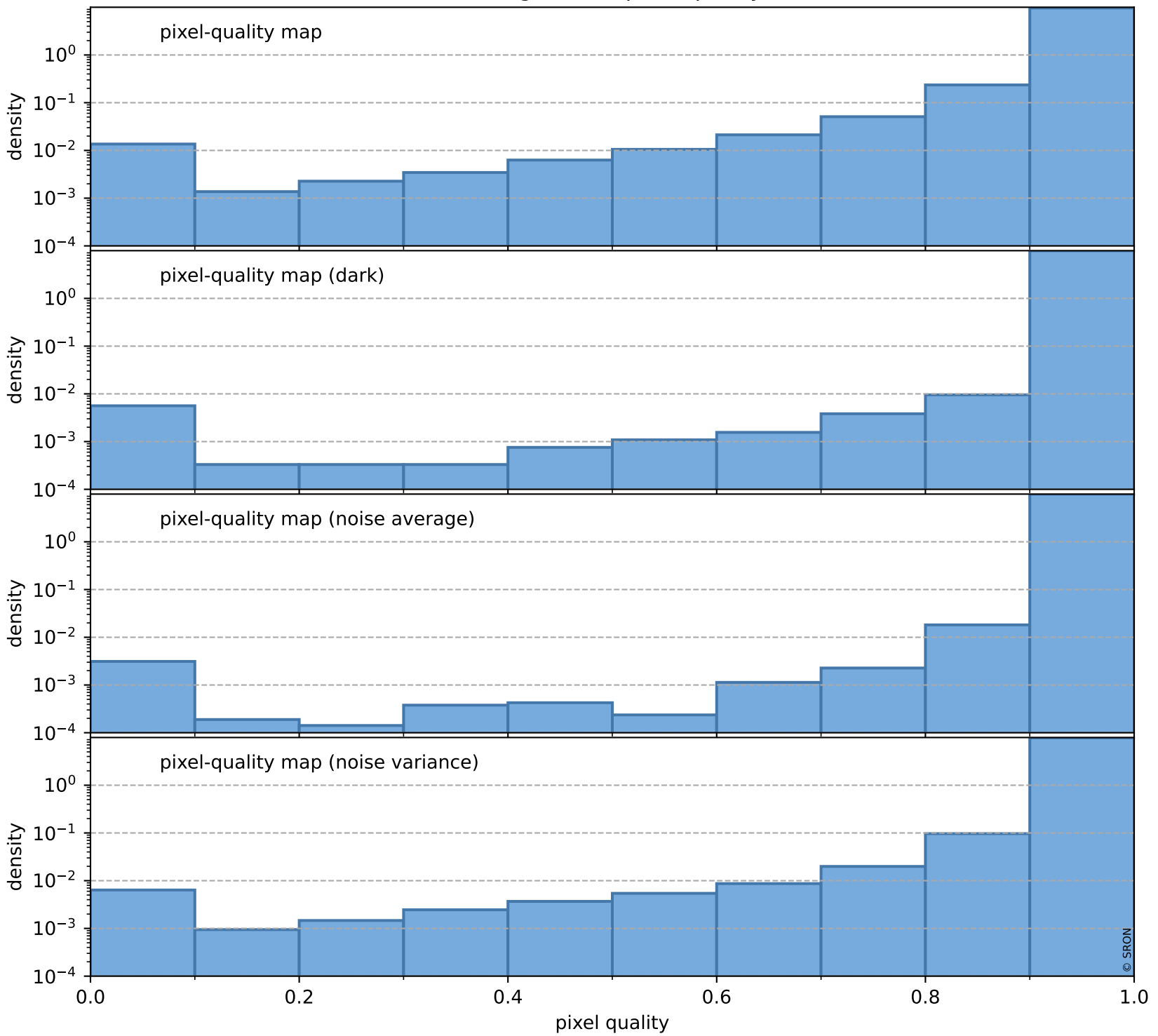
total quality compared with SWIR pixel-quality CKD



Tropomi SWIR pixel quality (beta nominal)

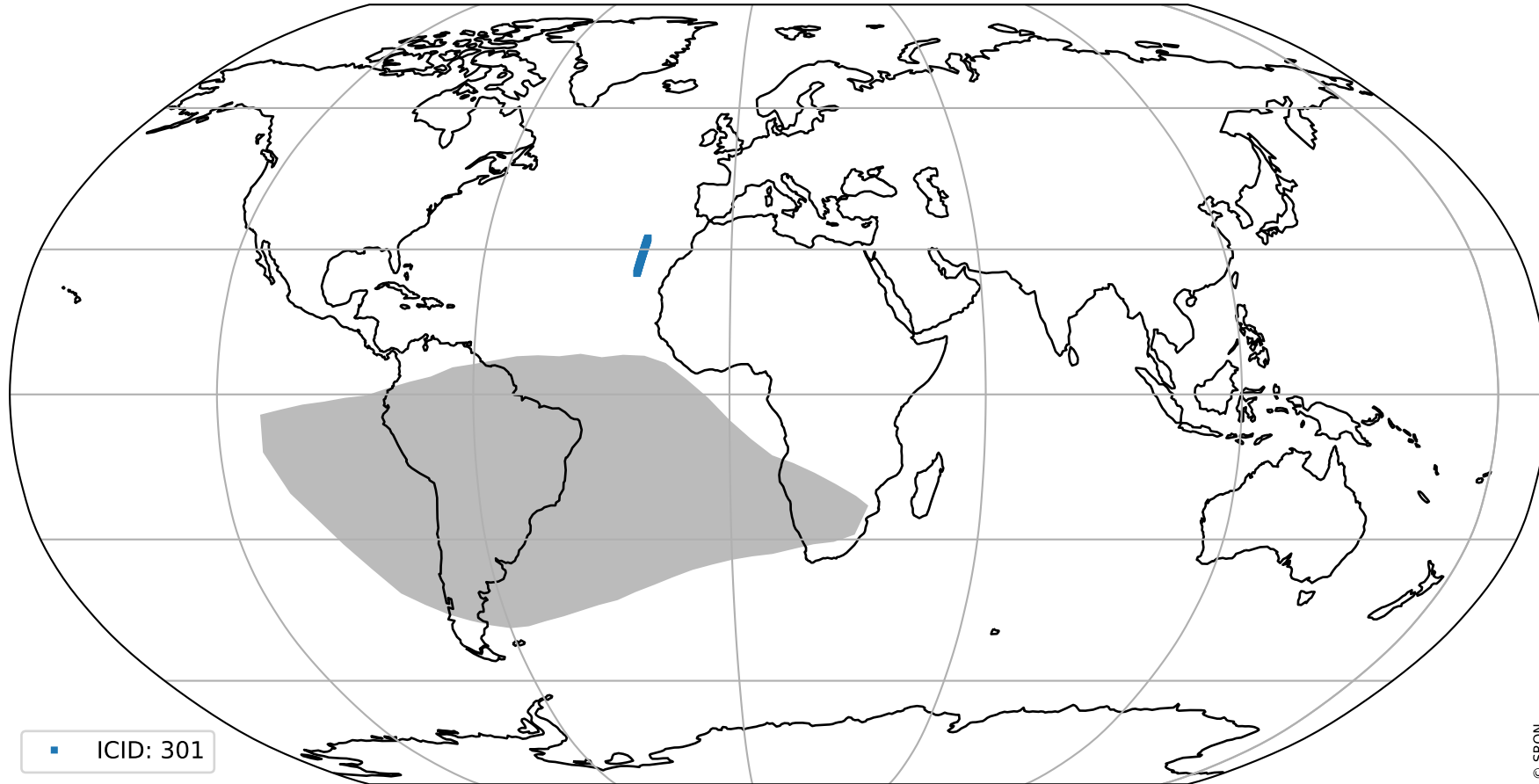
orbits : 20 in [20422, 20467]
coverage : 2021-09-22 / 2021-09-24
created : 2023-08-22T12:08:36

Histograms of pixel-quality



Tropomi SWIR pixel quality (beta nominal) ground-tracks of Sentinel-5P

orbits : 20 in [20422, 20467]
coverage : 2021-09-22 / 2021-09-24
created : 2023-08-22T12:08:36



Tropomi SWIR pixel quality (beta nominal)

orbits : [1867, 20467]
coverage : 2018-02-20 / 2021-09-24
created : 2023-08-22T12:08:36

trend of pixel quality & temperatures

