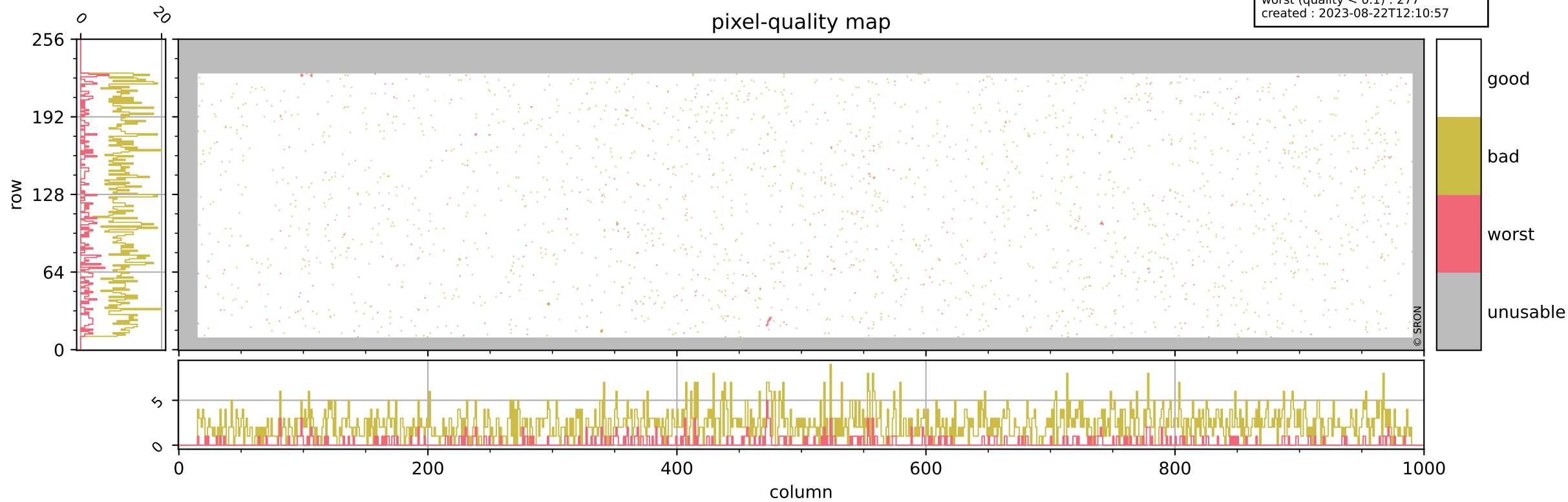


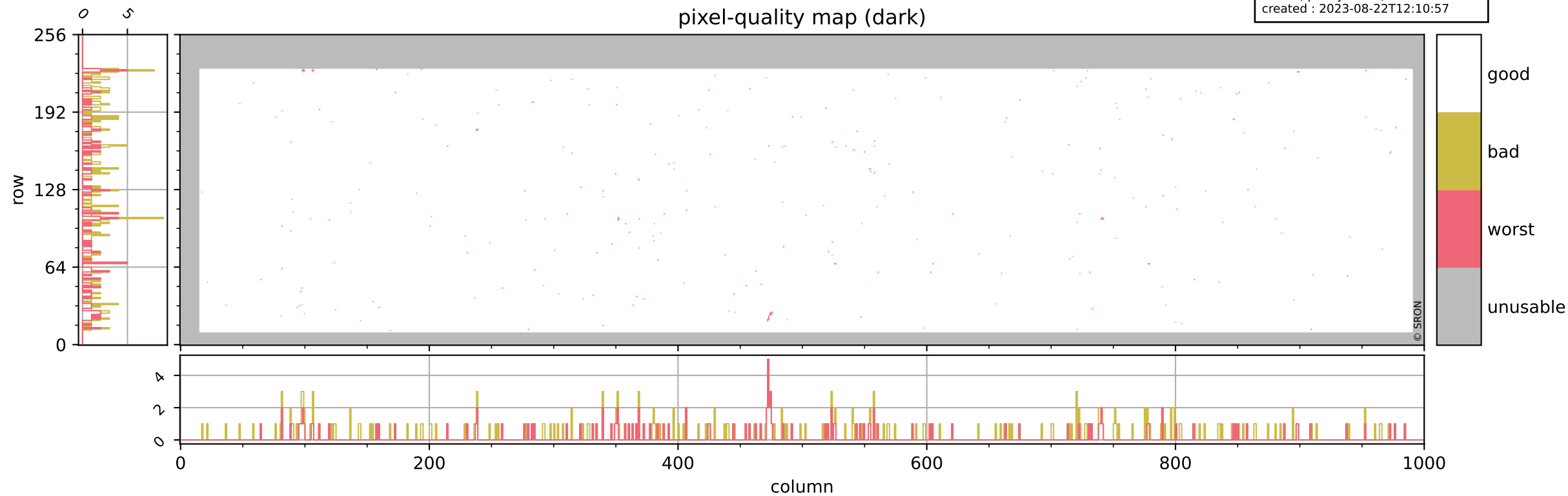
Tropomi SWIR pixel quality (beta nominal)

orbits : 20 in [22672, 22717]
coverage : 2022-02-27 / 2022-03-02
bad (quality < 0.8) : 2324
worst (quality < 0.1) : 277
created : 2023-08-22T12:10:57



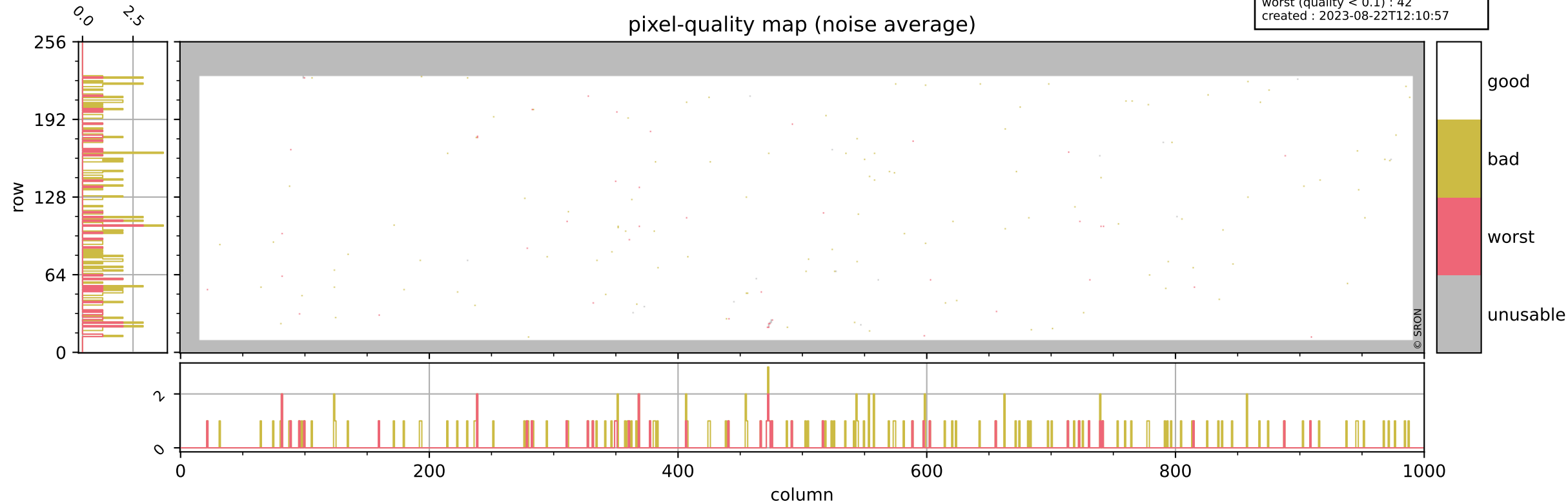
Tropomi SWIR pixel quality (beta nominal)

orbits : 20 in [22672, 22717]
coverage : 2022-02-27 / 2022-03-02
bad (quality < 0.8) : 288
worst (quality < 0.1) : 121
created : 2023-08-22T12:10:57



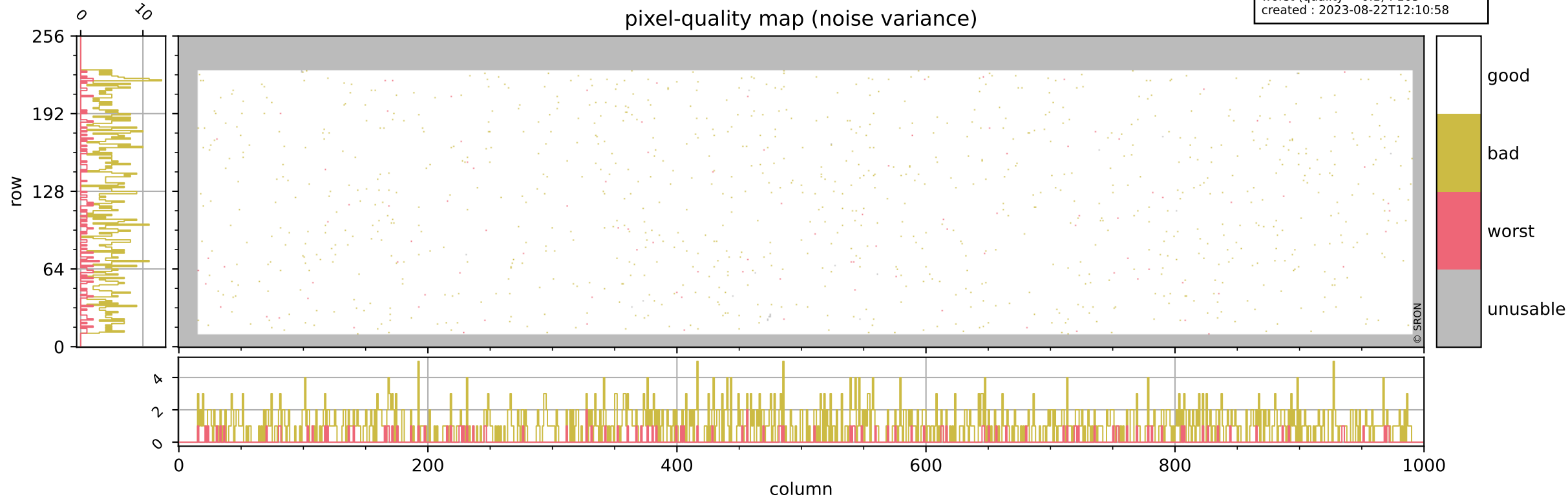
Tropomi SWIR pixel quality (beta nominal)

orbits : 20 in [22672, 22717]
coverage : 2022-02-27 / 2022-03-02
bad (quality < 0.8) : 155
worst (quality < 0.1) : 42
created : 2023-08-22T12:10:57



Tropomi SWIR pixel quality (beta nominal)

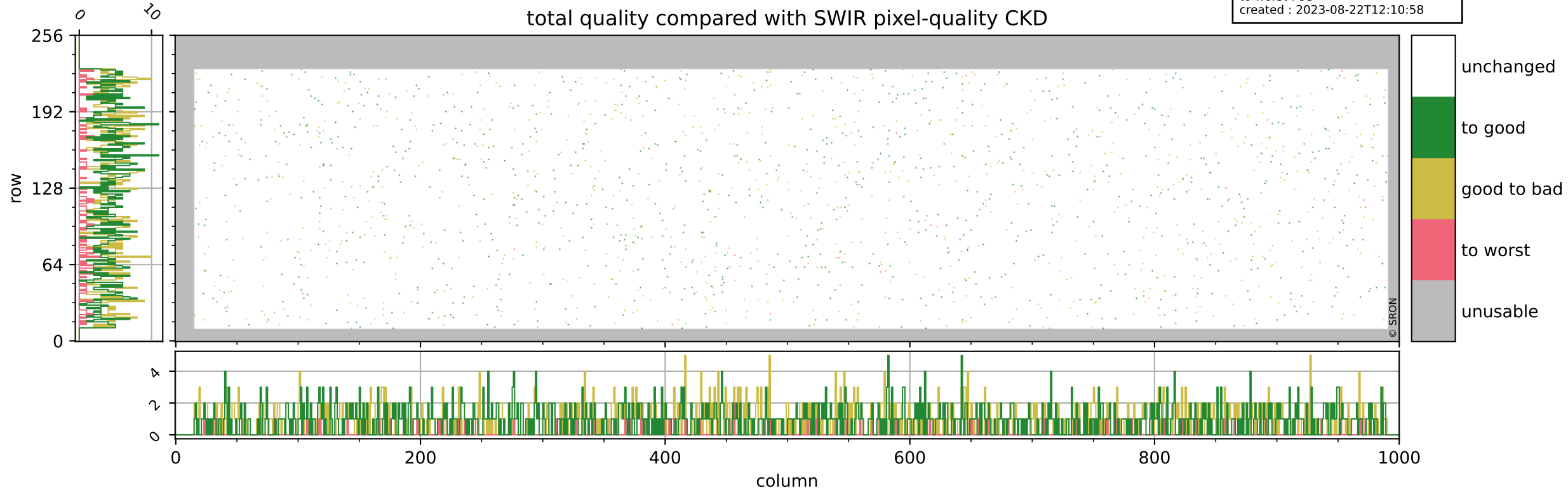
orbits : 20 in [22672, 22717]
coverage : 2022-02-27 / 2022-03-02
bad (quality < 0.8) : 1013
worst (quality < 0.1) : 105
created : 2023-08-22T12:10:58



Tropomi SWIR pixel quality (beta nominal)

orbits : 20 in [22672, 22717]
coverage : 2022-02-27 / 2022-03-02
to good : 871
good to bad : 828
to worst : 93
created : 2023-08-22T12:10:58

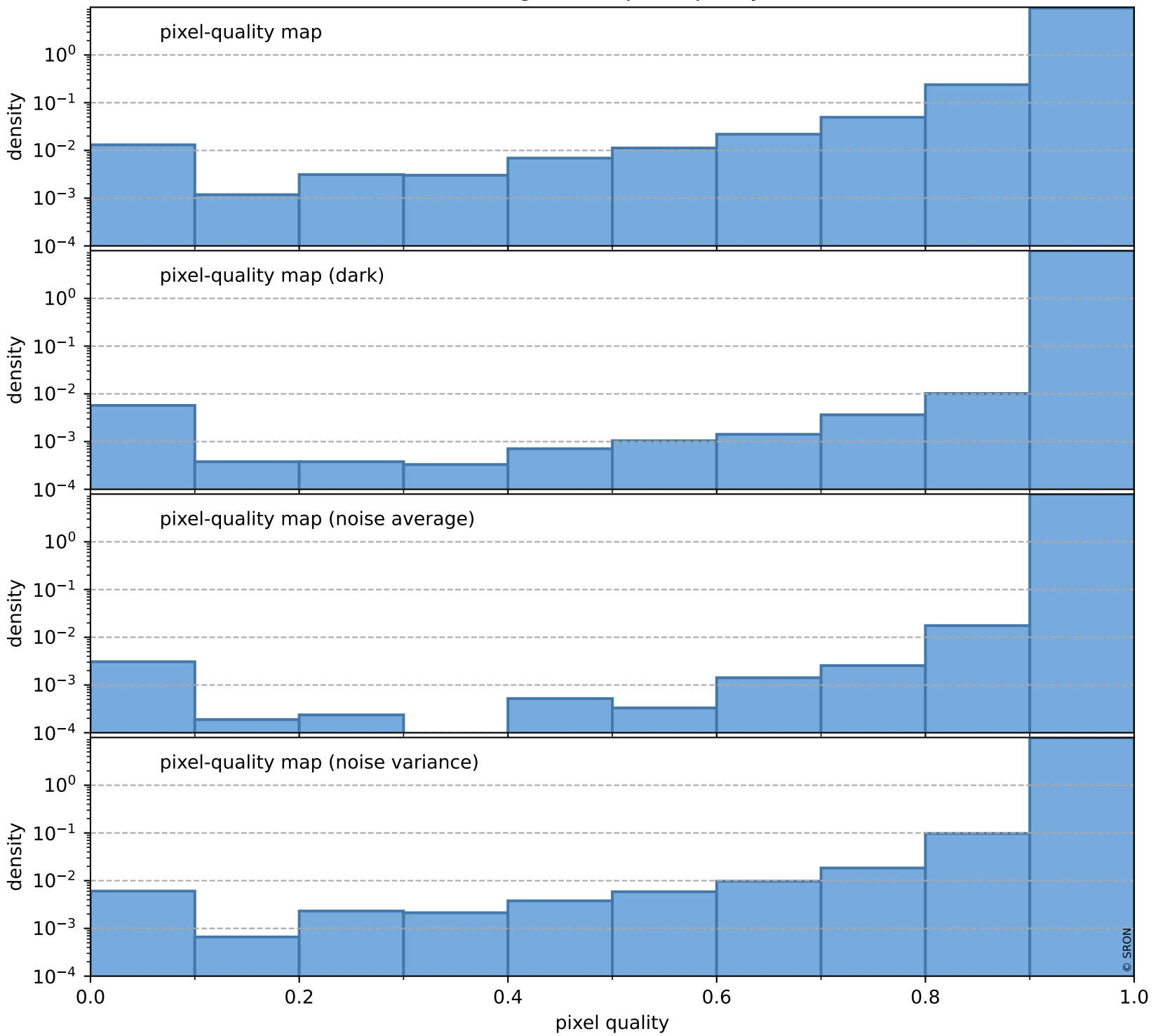
total quality compared with SWIR pixel-quality CKD



Tropomi SWIR pixel quality (beta nominal)

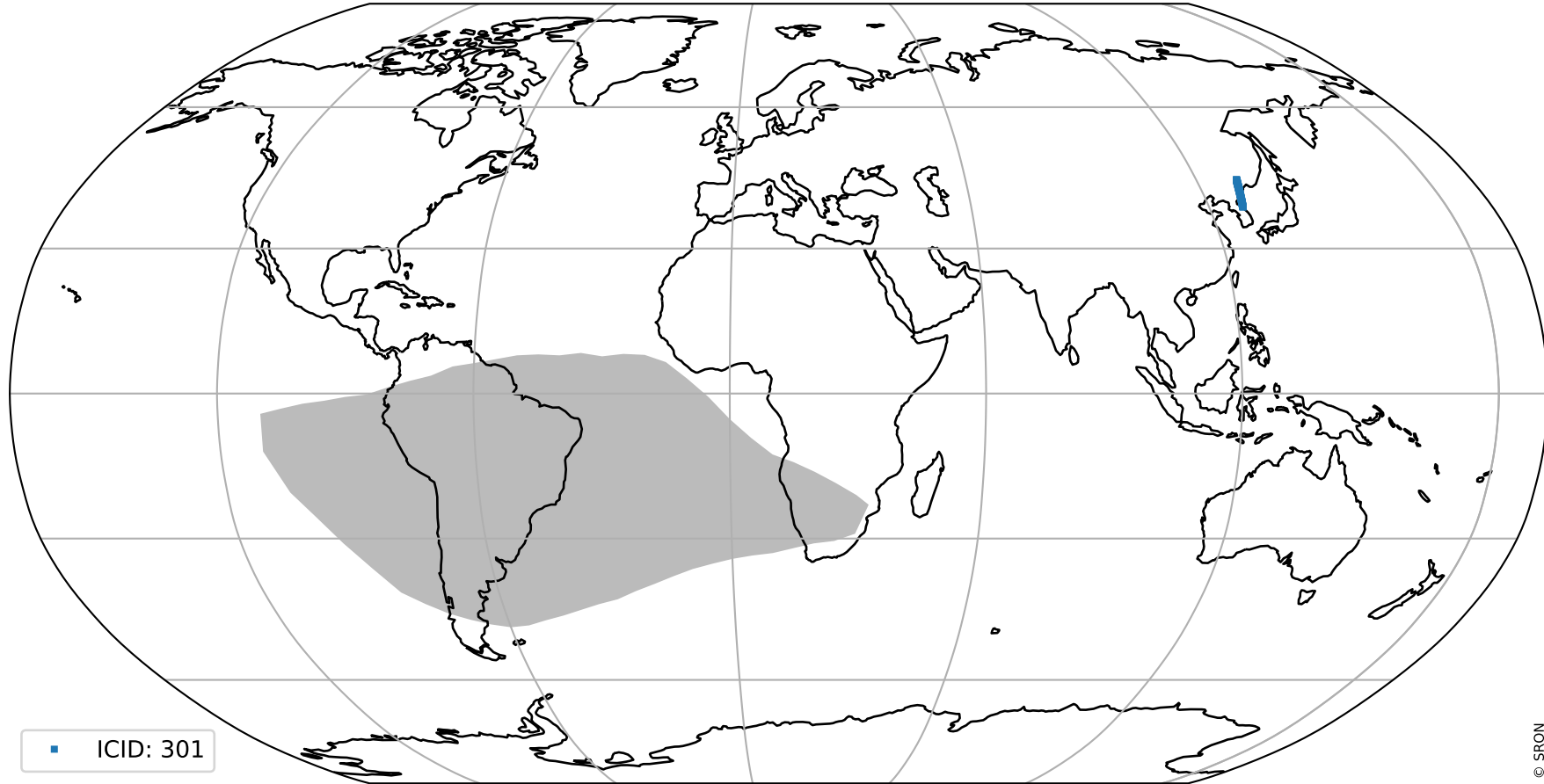
orbits : 20 in [22672, 22717]
coverage : 2022-02-27 / 2022-03-02
created : 2023-08-22T12:10:58

Histograms of pixel-quality



Tropomi SWIR pixel quality (beta nominal) ground-tracks of Sentinel-5P

orbits : 20 in [22672, 22717]
coverage : 2022-02-27 / 2022-03-02
created : 2023-08-22T12:10:59



Tropomi SWIR pixel quality (beta nominal)

orbits : [1867, 22717]
coverage : 2018-02-20 / 2022-03-02
created : 2023-08-22T12:10:59

trend of pixel quality & temperatures

