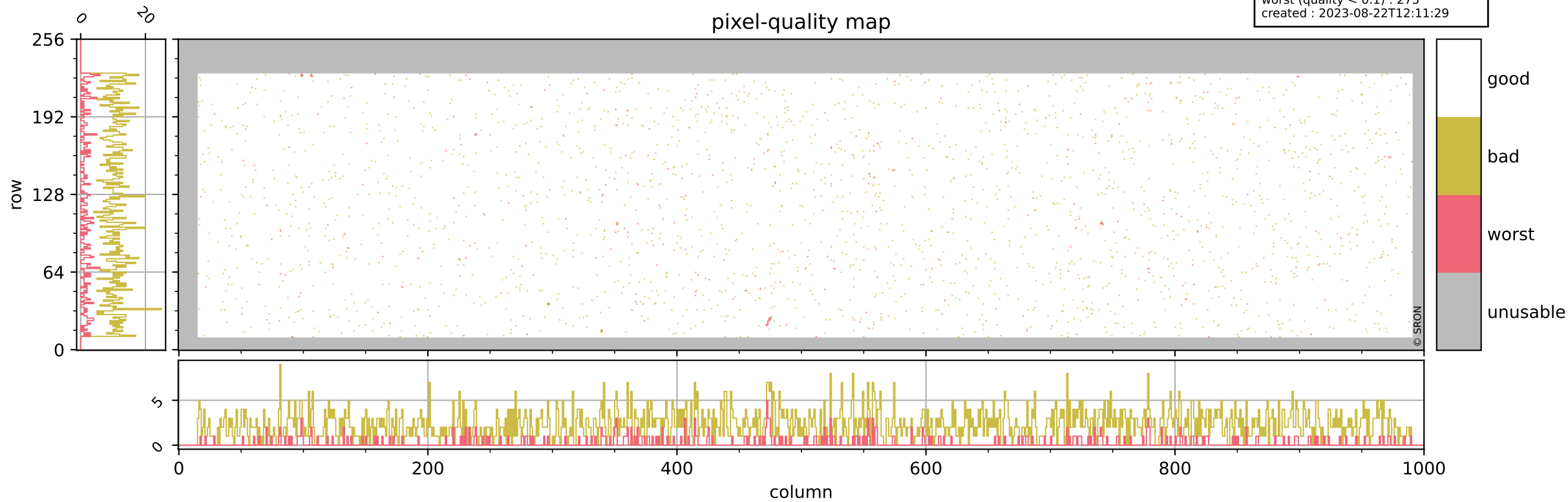


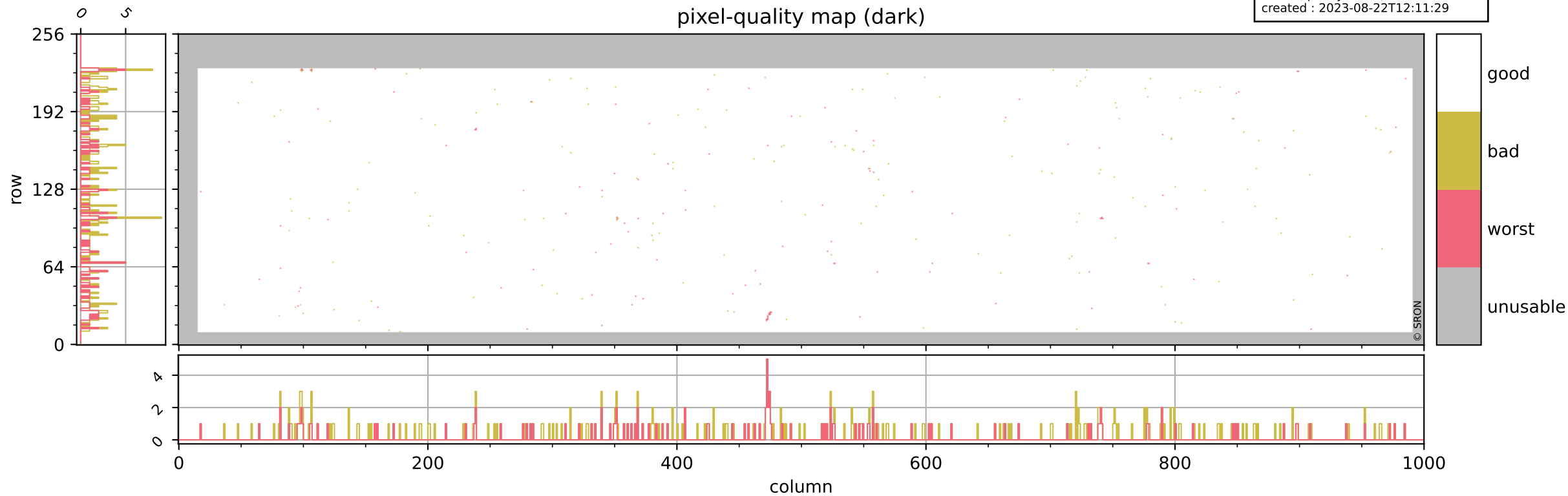
Tropomi SWIR pixel quality (beta nominal)

orbits : 18 in [23167, 23212]
coverage : 2022-04-03 / 2022-04-06
bad (quality < 0.8) : 2336
worst (quality < 0.1) : 275
created : 2023-08-22T12:11:29



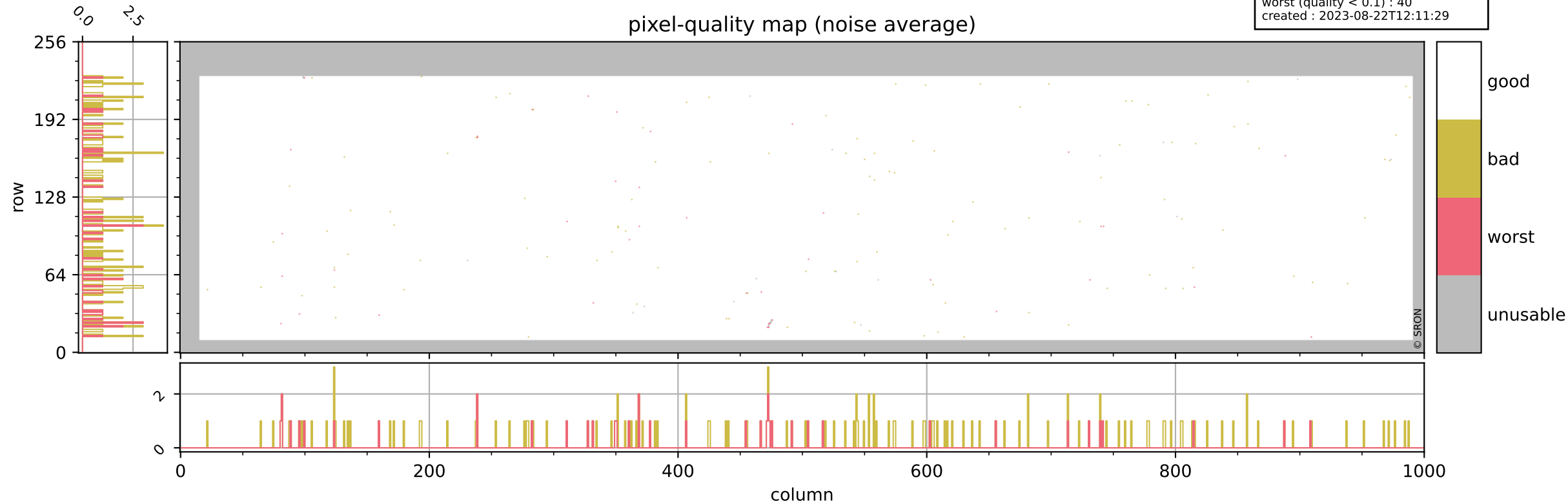
Tropomi SWIR pixel quality (beta nominal)

orbits : 18 in [23167, 23212]
coverage : 2022-04-03 / 2022-04-06
bad (quality < 0.8) : 290
worst (quality < 0.1) : 122
created : 2023-08-22T12:11:29



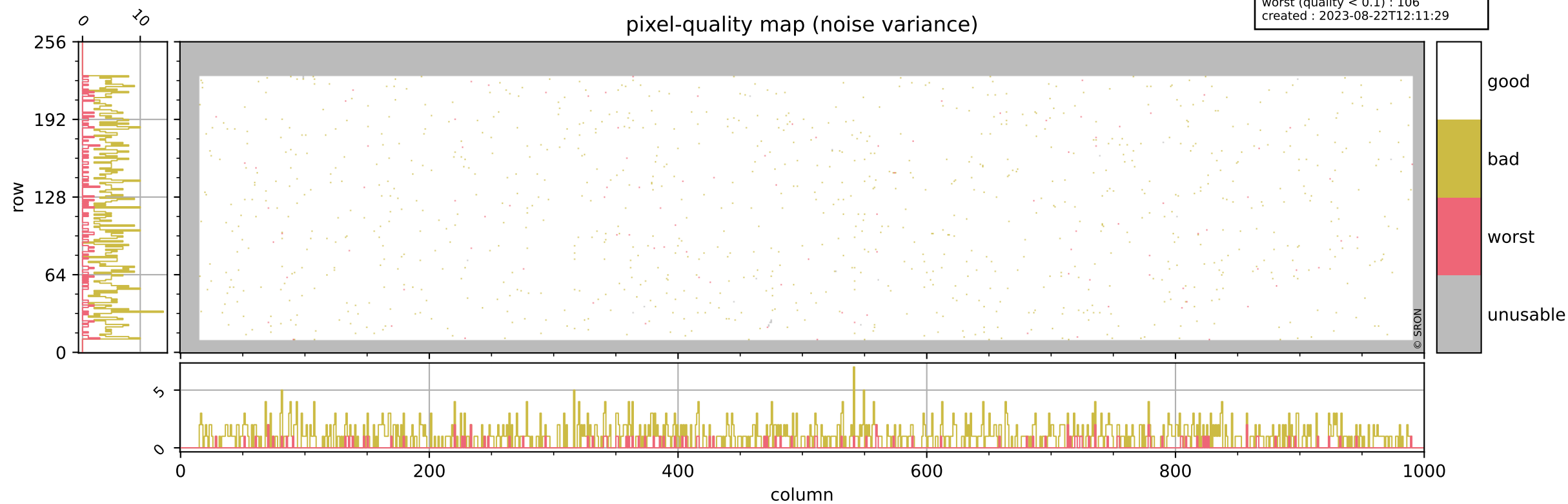
Tropomi SWIR pixel quality (beta nominal)

orbits : 18 in [23167, 23212]
coverage : 2022-04-03 / 2022-04-06
bad (quality < 0.8) : 150
worst (quality < 0.1) : 40
created : 2023-08-22T12:11:29



Tropomi SWIR pixel quality (beta nominal)

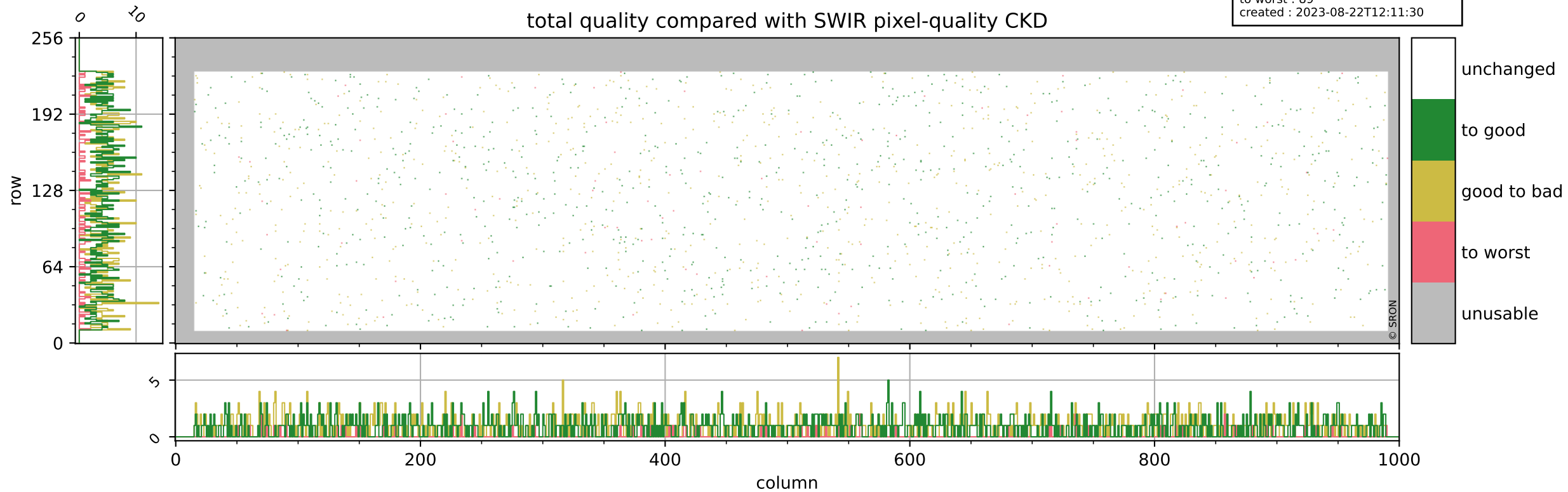
orbits : 18 in [23167, 23212]
coverage : 2022-04-03 / 2022-04-06
bad (quality < 0.8) : 1026
worst (quality < 0.1) : 106
created : 2023-08-22T12:11:29



Tropomi SWIR pixel quality (beta nominal)

orbits : 18 in [23167, 23212]
coverage : 2022-04-03 / 2022-04-06
to good : 861
good to bad : 835
to worst : 89
created : 2023-08-22T12:11:30

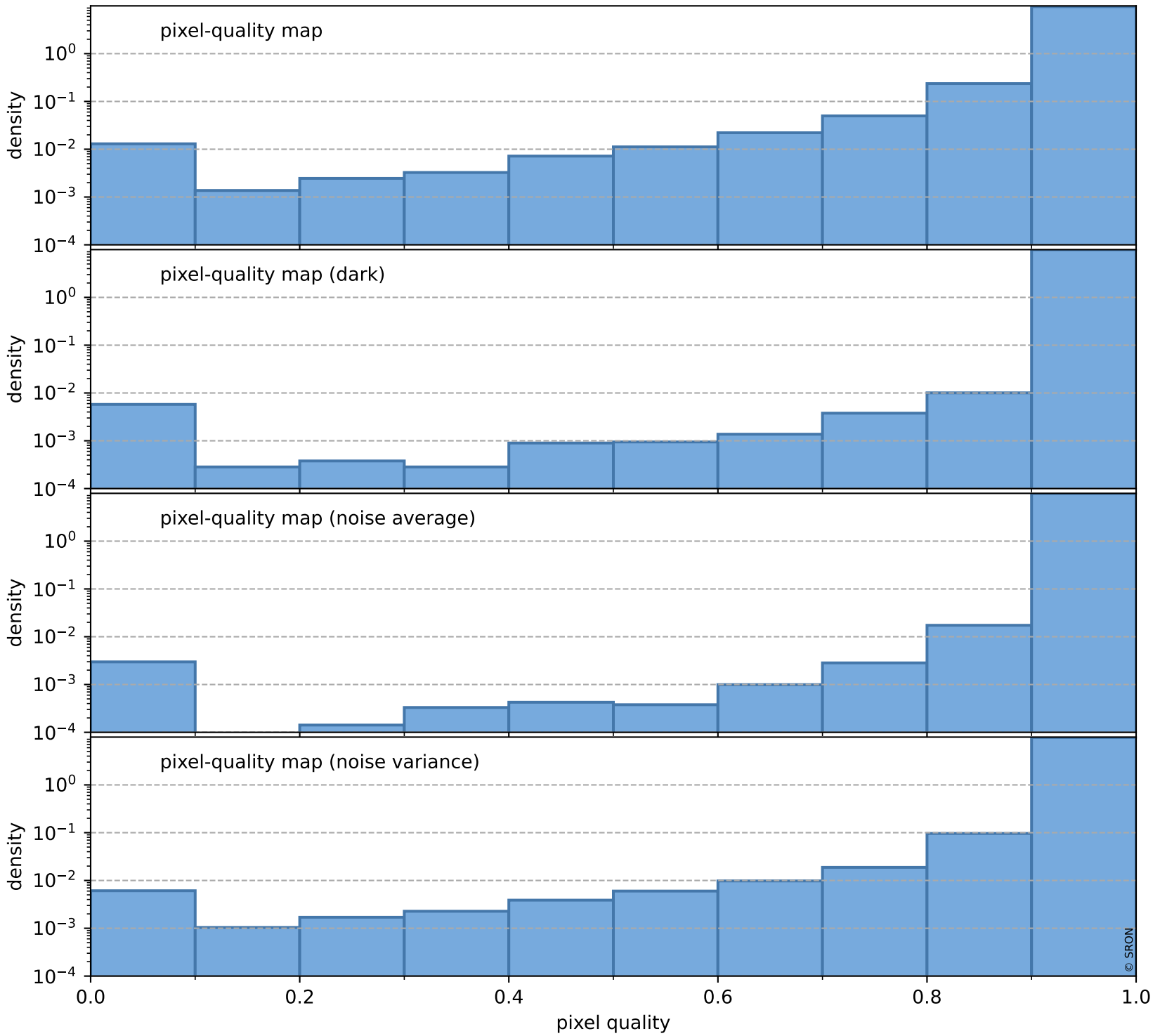
total quality compared with SWIR pixel-quality CKD



Tropomi SWIR pixel quality (beta nominal)

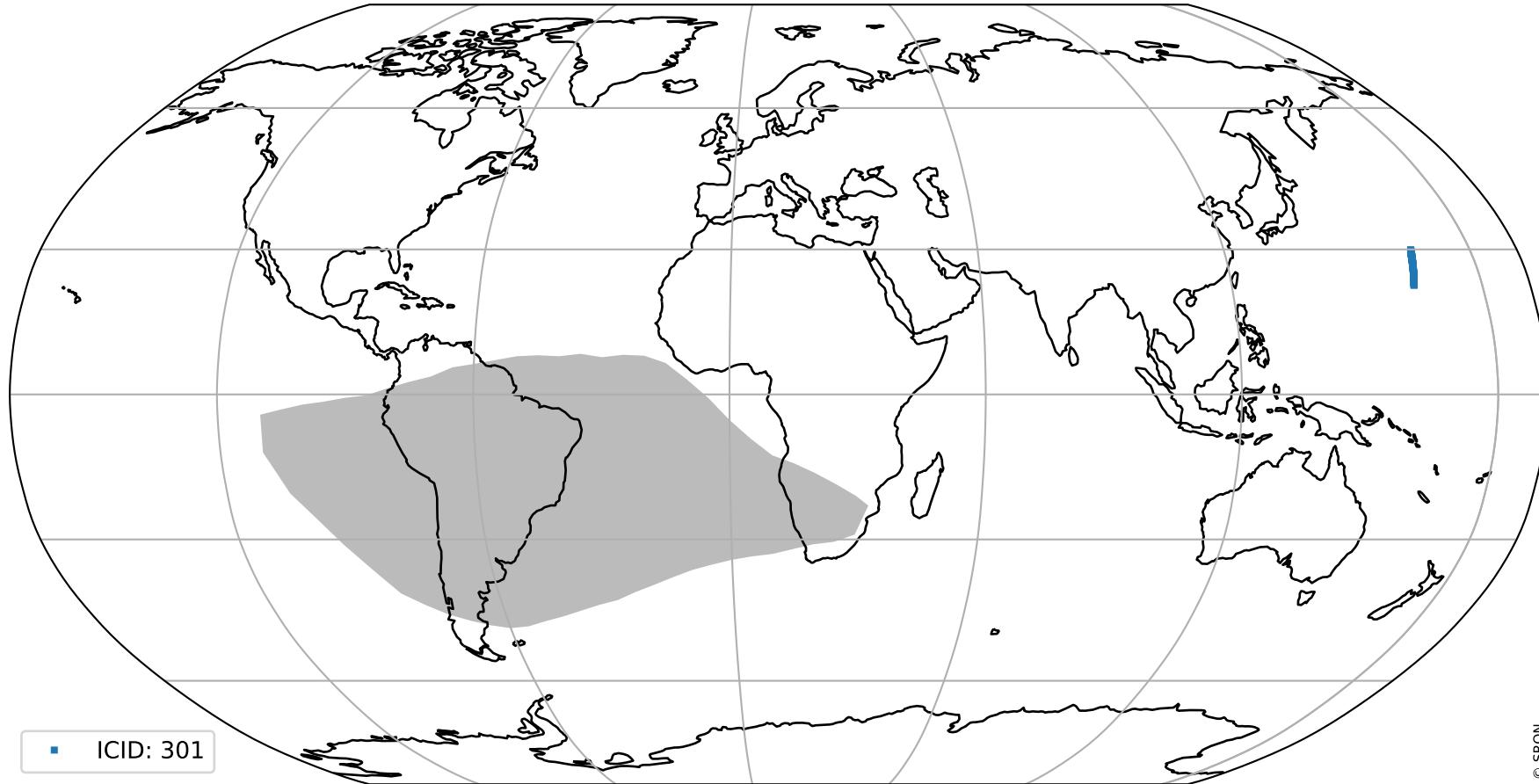
orbits : 18 in [23167, 23212]
coverage : 2022-04-03 / 2022-04-06
created : 2023-08-22T12:11:30

Histograms of pixel-quality



Tropomi SWIR pixel quality (beta nominal) ground-tracks of Sentinel-5P

orbits : 18 in [23167, 23212]
coverage : 2022-04-03 / 2022-04-06
created : 2023-08-22T12:11:30



Tropomi SWIR pixel quality (beta nominal)

orbits : [1867, 23212]
coverage : 2018-02-20 / 2022-04-06
created : 2023-08-22T12:11:31

trend of pixel quality & temperatures

