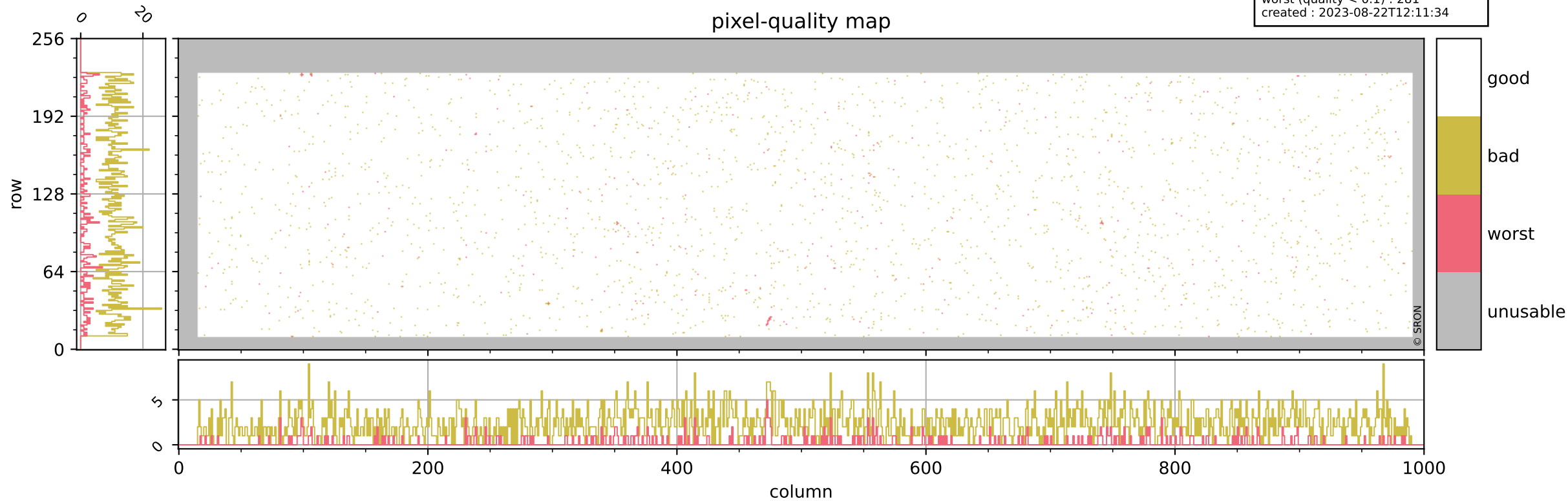


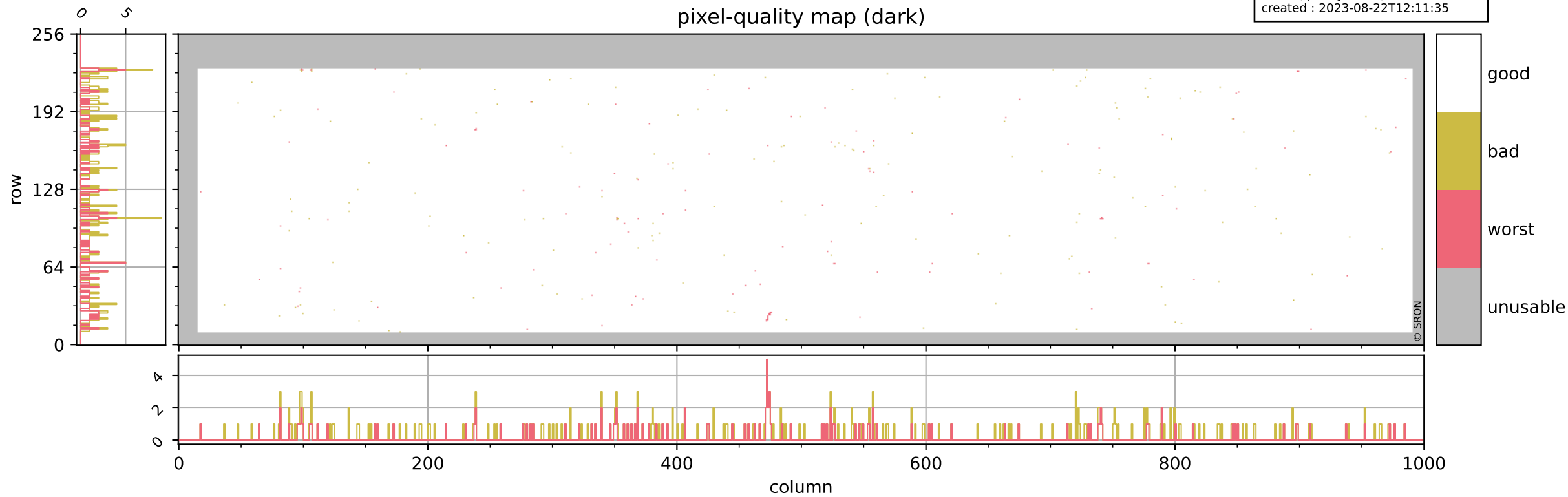
Tropomi SWIR pixel quality (beta nominal)

orbits : 19 in [23257, 23302]
coverage : 2022-04-09 / 2022-04-12
bad (quality < 0.8) : 2413
worst (quality < 0.1) : 281
created : 2023-08-22T12:11:34



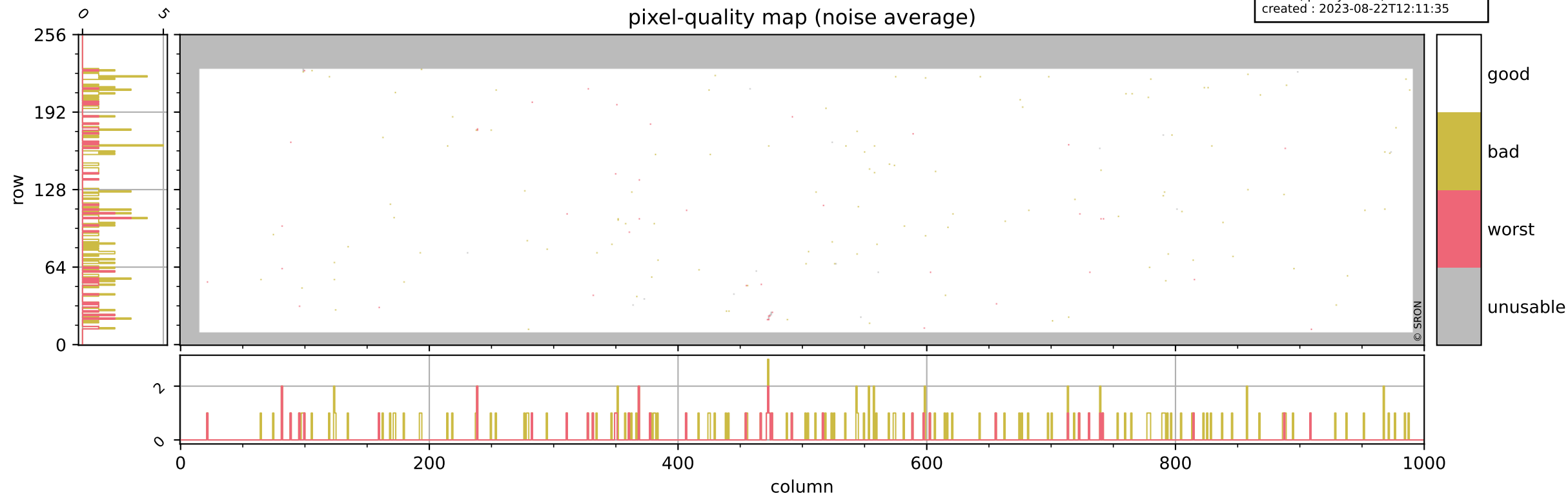
Tropomi SWIR pixel quality (beta nominal)

orbits : 19 in [23257, 23302]
coverage : 2022-04-09 / 2022-04-12
bad (quality < 0.8) : 286
worst (quality < 0.1) : 121
created : 2023-08-22T12:11:35



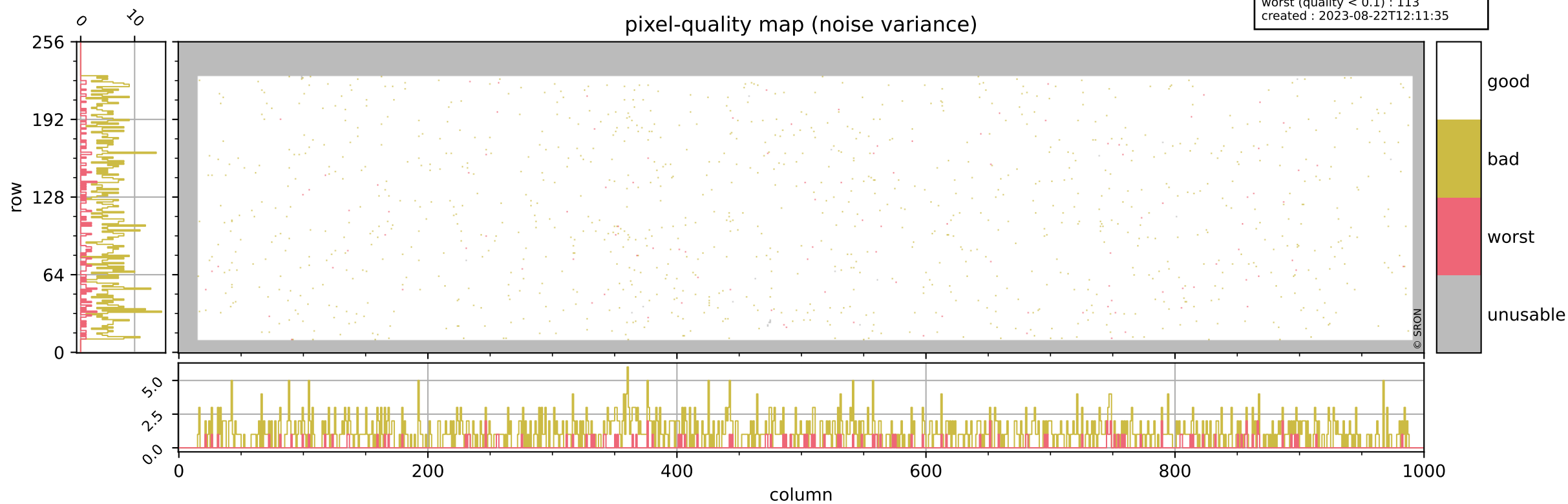
Tropomi SWIR pixel quality (beta nominal)

orbits : 19 in [23257, 23302]
coverage : 2022-04-09 / 2022-04-12
bad (quality < 0.8) : 156
worst (quality < 0.1) : 41
created : 2023-08-22T12:11:35



Tropomi SWIR pixel quality (beta nominal)

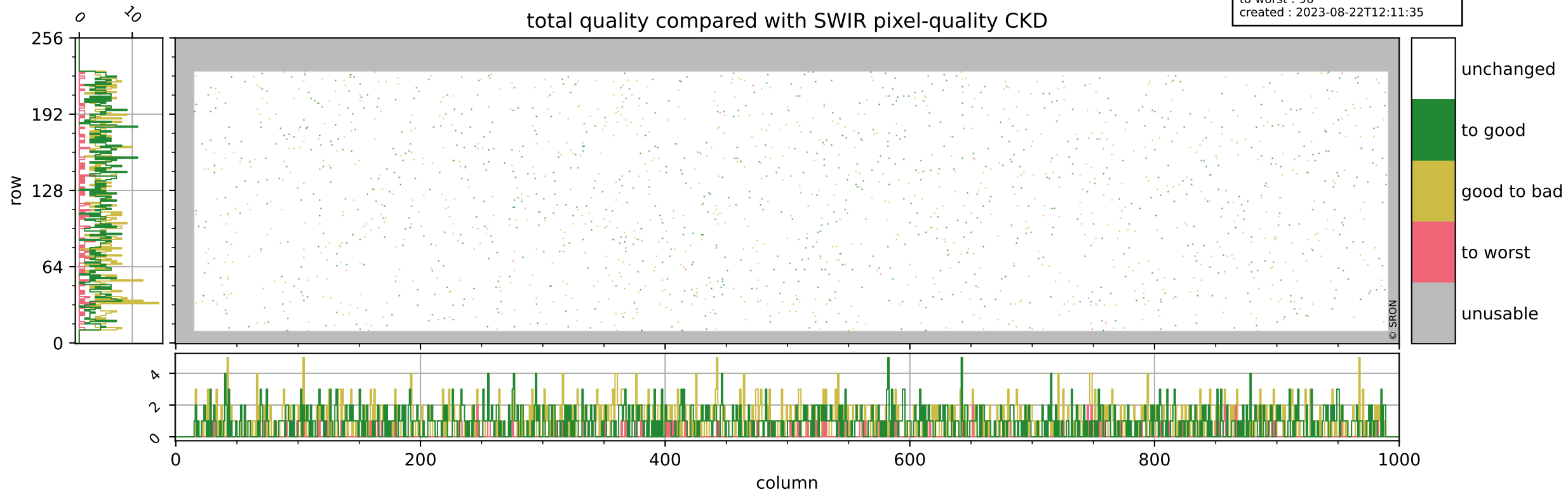
orbits : 19 in [23257, 23302]
coverage : 2022-04-09 / 2022-04-12
bad (quality < 0.8) : 1108
worst (quality < 0.1) : 113
created : 2023-08-22T12:11:35



Tropomi SWIR pixel quality (beta nominal)

orbits : 19 in [23257, 23302]
coverage : 2022-04-09 / 2022-04-12
to good : 857
good to bad : 900
to worst : 96
created : 2023-08-22T12:11:35

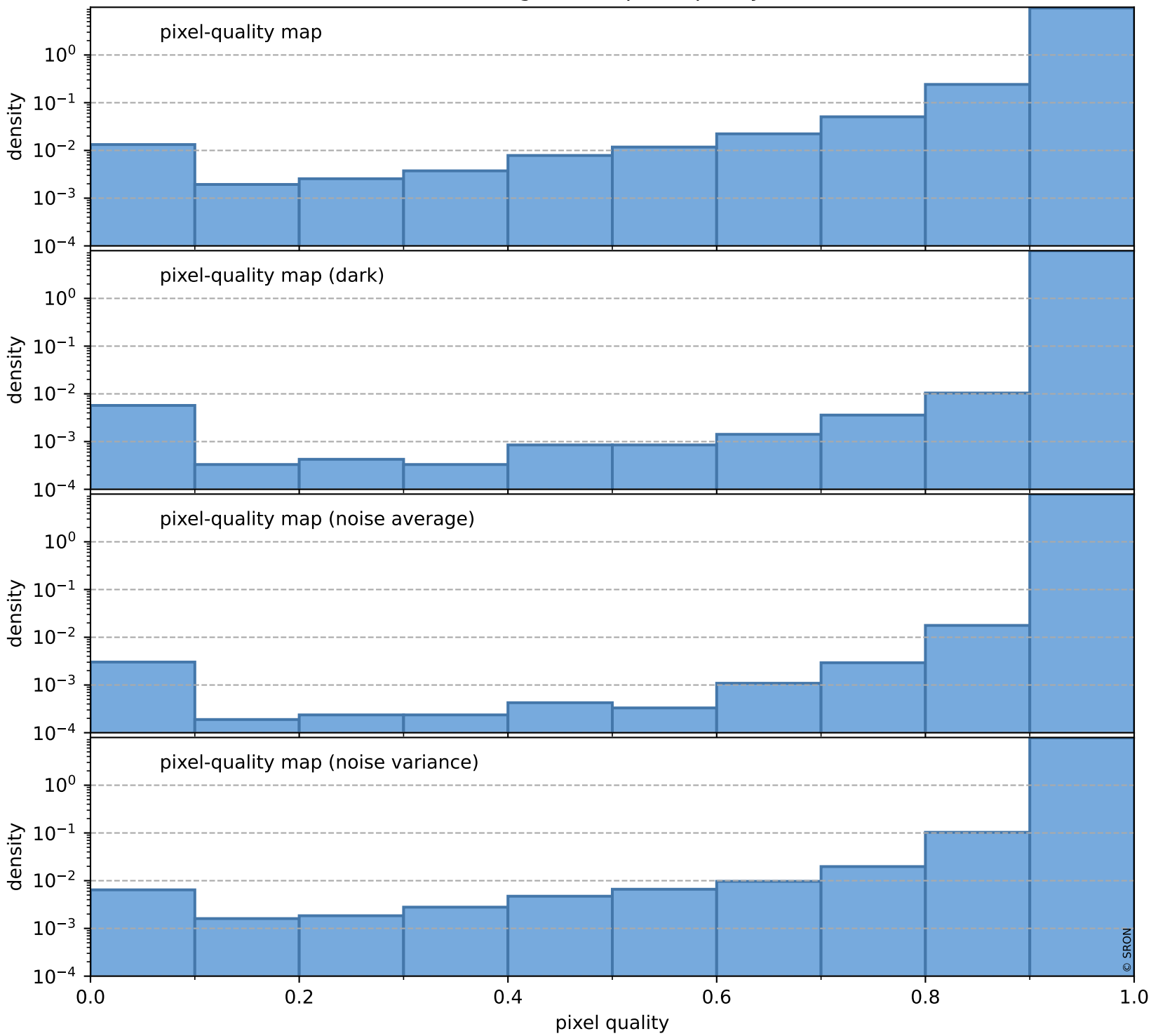
total quality compared with SWIR pixel-quality CKD



Tropomi SWIR pixel quality (beta nominal)

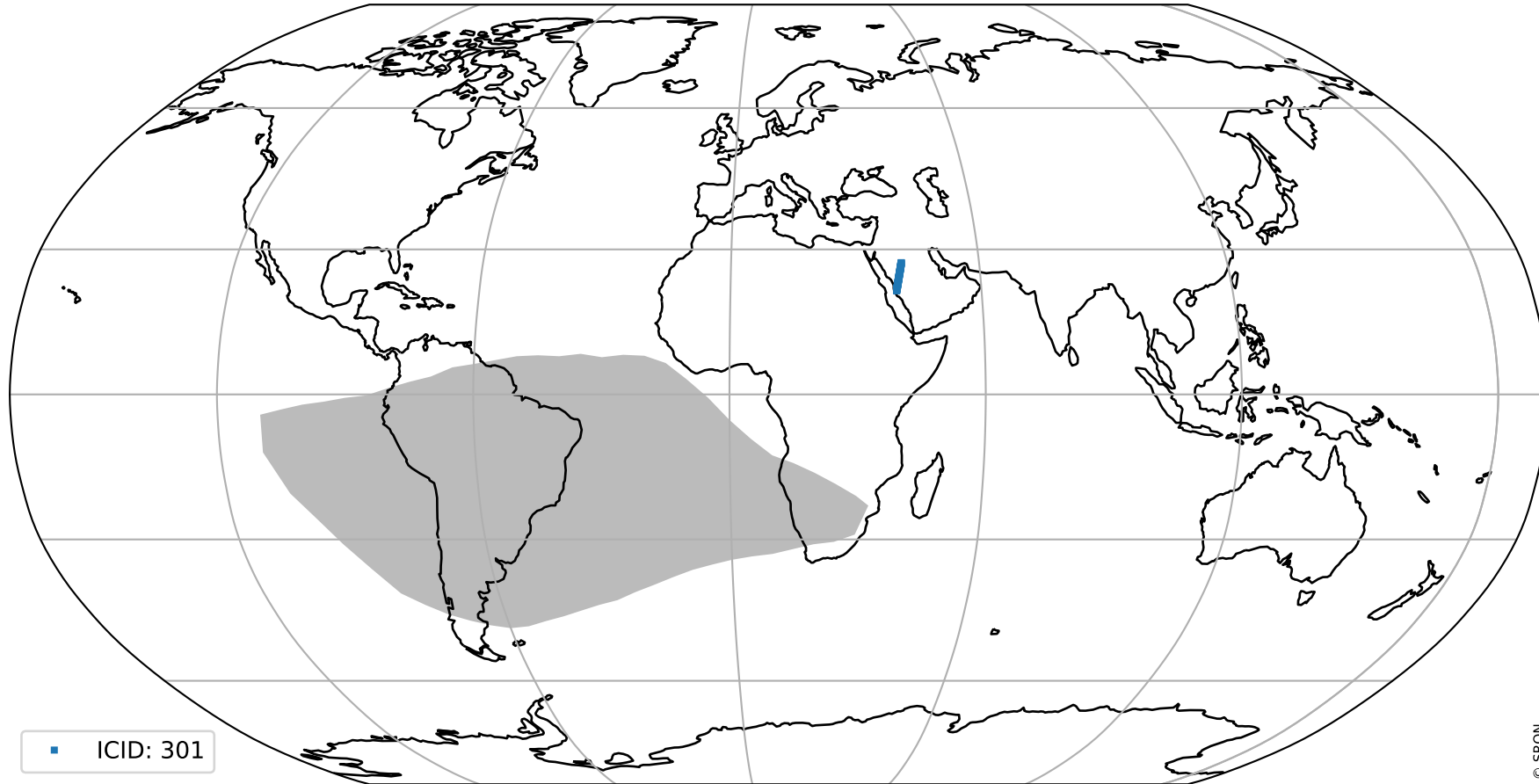
orbits : 19 in [23257, 23302]
coverage : 2022-04-09 / 2022-04-12
created : 2023-08-22T12:11:36

Histograms of pixel-quality



Tropomi SWIR pixel quality (beta nominal) ground-tracks of Sentinel-5P

orbits : 19 in [23257, 23302]
coverage : 2022-04-09 / 2022-04-12
created : 2023-08-22T12:11:36



Tropomi SWIR pixel quality (beta nominal)

orbits : [1867, 23302]
coverage : 2018-02-20 / 2022-04-12
created : 2023-08-22T12:11:36

trend of pixel quality & temperatures

