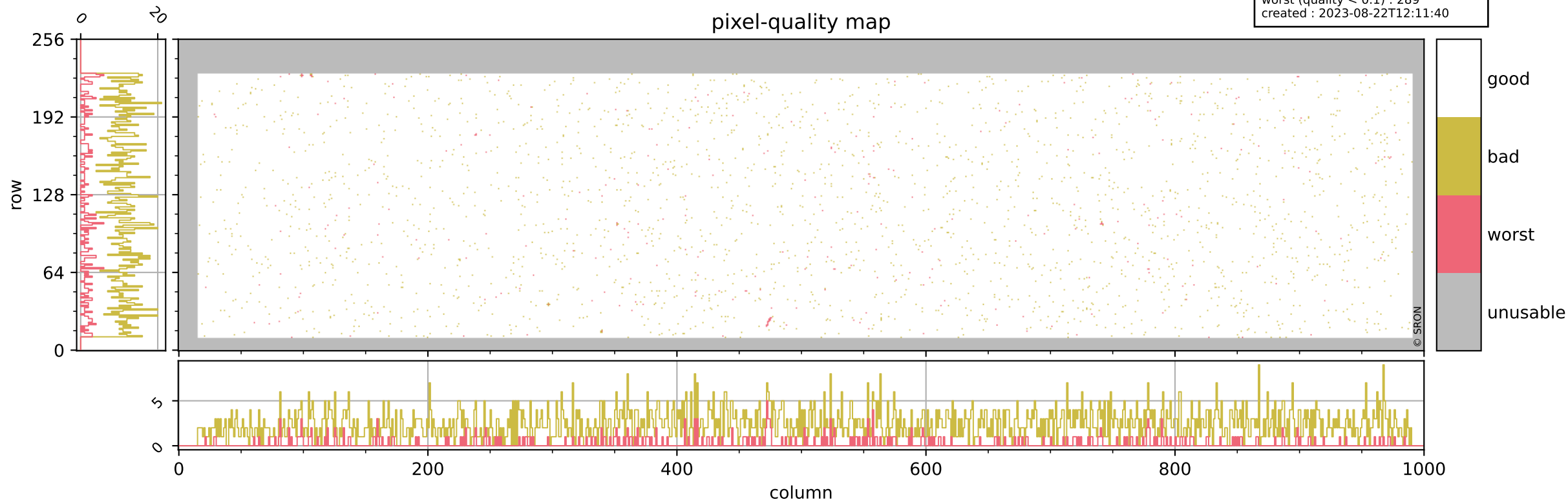


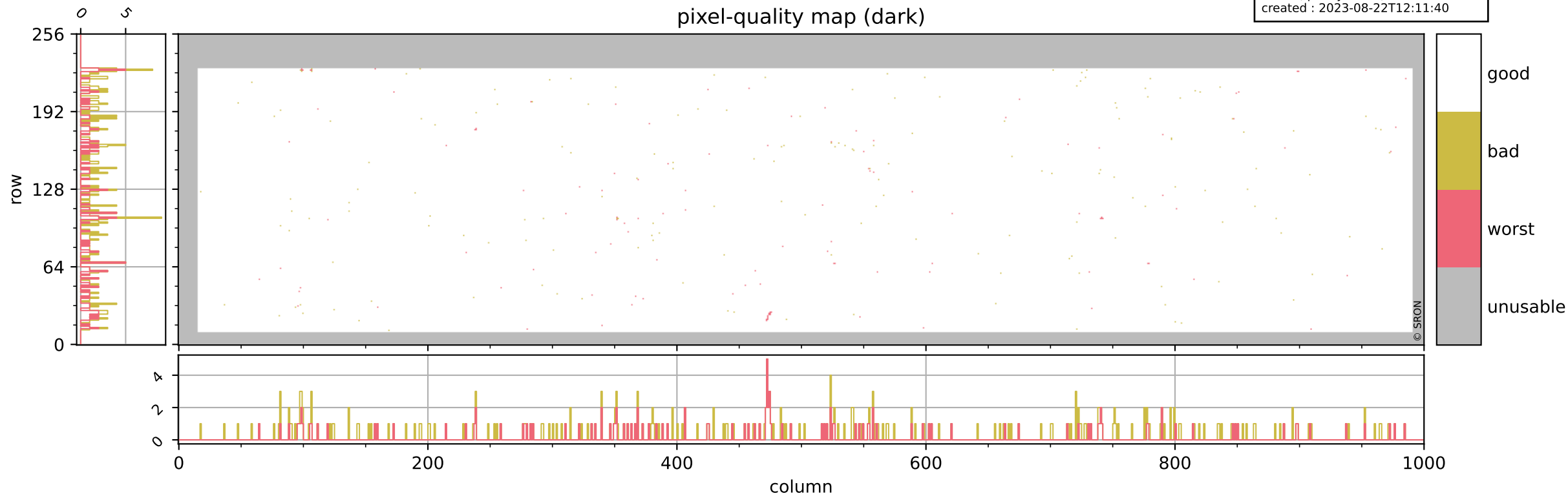
Tropomi SWIR pixel quality (beta nominal)

orbits : 18 in [23347, 23392]
coverage : 2022-04-16 / 2022-04-19
bad (quality < 0.8) : 2449
worst (quality < 0.1) : 289
created : 2023-08-22T12:11:40



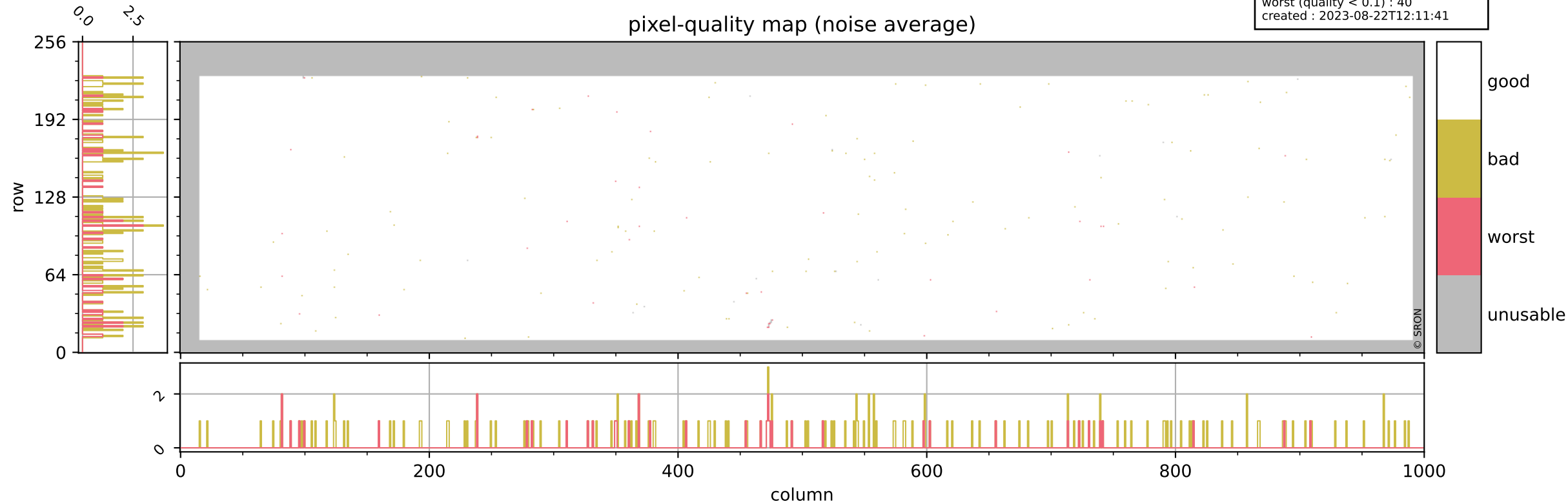
Tropomi SWIR pixel quality (beta nominal)

orbits : 18 in [23347, 23392]
coverage : 2022-04-16 / 2022-04-19
bad (quality < 0.8) : 291
worst (quality < 0.1) : 121
created : 2023-08-22T12:11:40



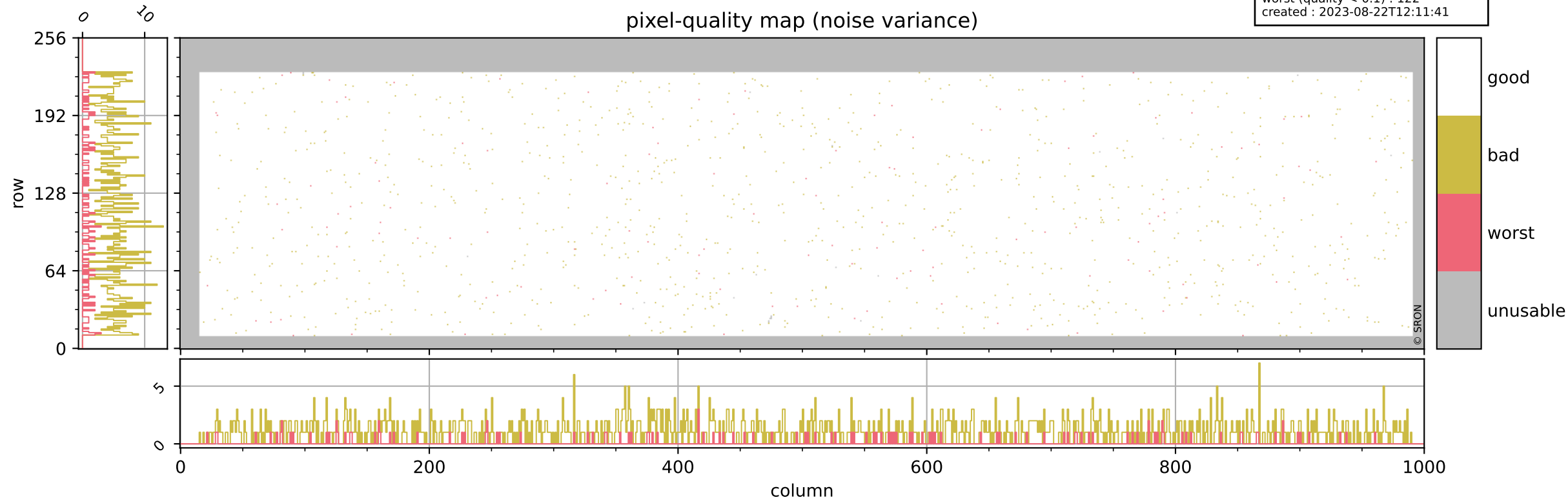
Tropomi SWIR pixel quality (beta nominal)

orbits : 18 in [23347, 23392]
coverage : 2022-04-16 / 2022-04-19
bad (quality < 0.8) : 162
worst (quality < 0.1) : 40
created : 2023-08-22T12:11:41



Tropomi SWIR pixel quality (beta nominal)

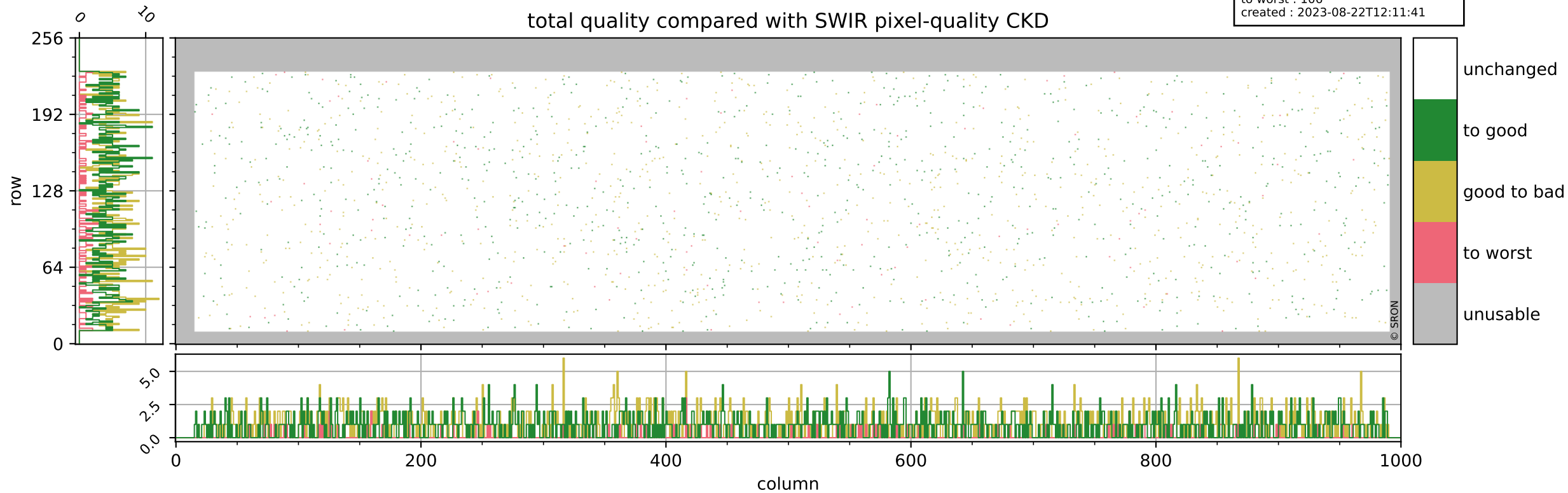
orbits : 18 in [23347, 23392]
coverage : 2022-04-16 / 2022-04-19
bad (quality < 0.8) : 1129
worst (quality < 0.1) : 122
created : 2023-08-22T12:11:41



Tropomi SWIR pixel quality (beta nominal)

orbits : 18 in [23347, 23392]
coverage : 2022-04-16 / 2022-04-19
to good : 865
good to bad : 934
to worst : 106
created : 2023-08-22T12:11:41

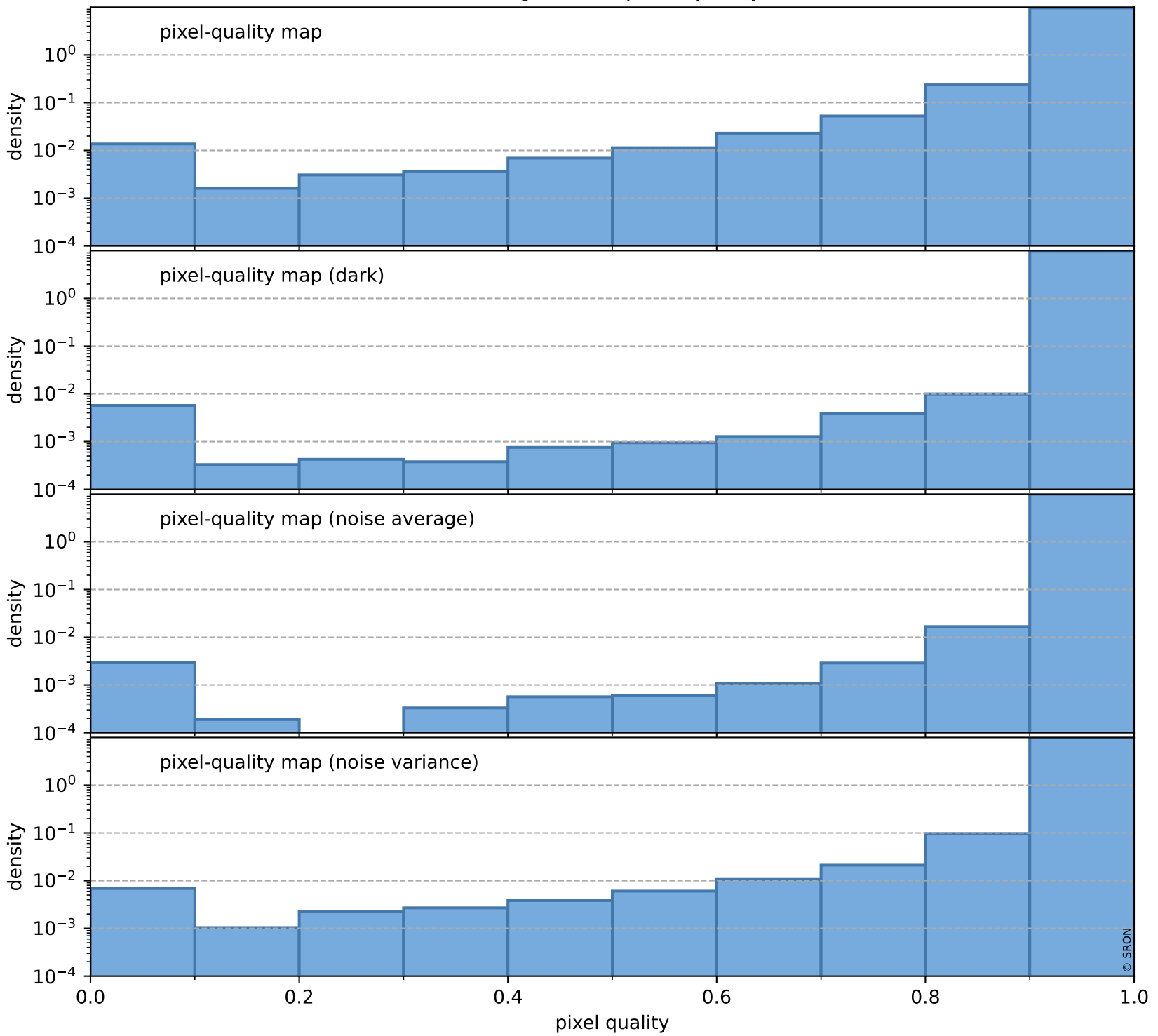
total quality compared with SWIR pixel-quality CKD



Tropomi SWIR pixel quality (beta nominal)

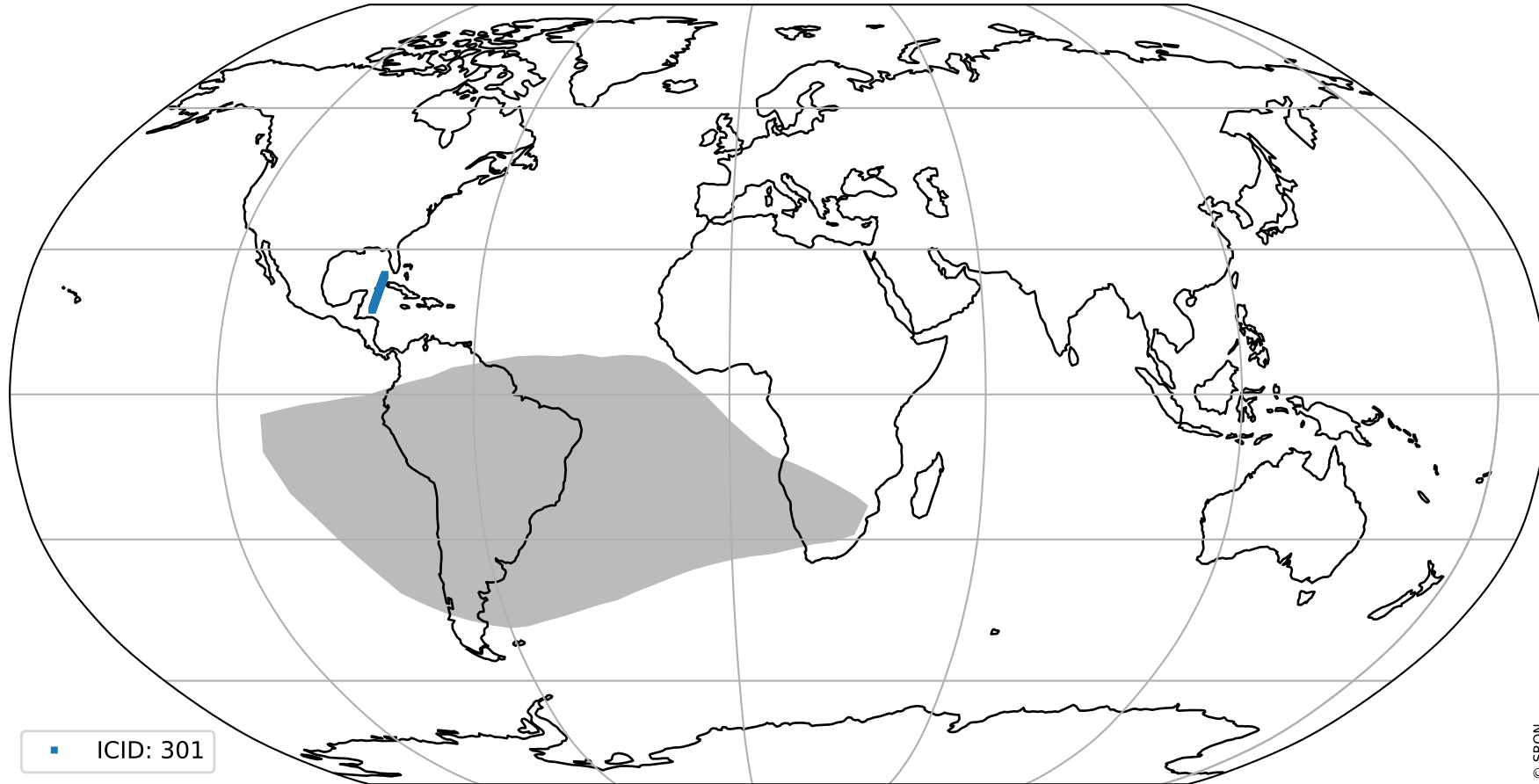
orbits : 18 in [23347, 23392]
coverage : 2022-04-16 / 2022-04-19
created : 2023-08-22T12:11:41

Histograms of pixel-quality



Tropomi SWIR pixel quality (beta nominal) ground-tracks of Sentinel-5P

orbits : 18 in [23347, 23392]
coverage : 2022-04-16 / 2022-04-19
created : 2023-08-22T12:11:42



Tropomi SWIR pixel quality (beta nominal)

orbits : [1867, 23392]
coverage : 2018-02-20 / 2022-04-19
created : 2023-08-22T12:11:42

trend of pixel quality & temperatures

