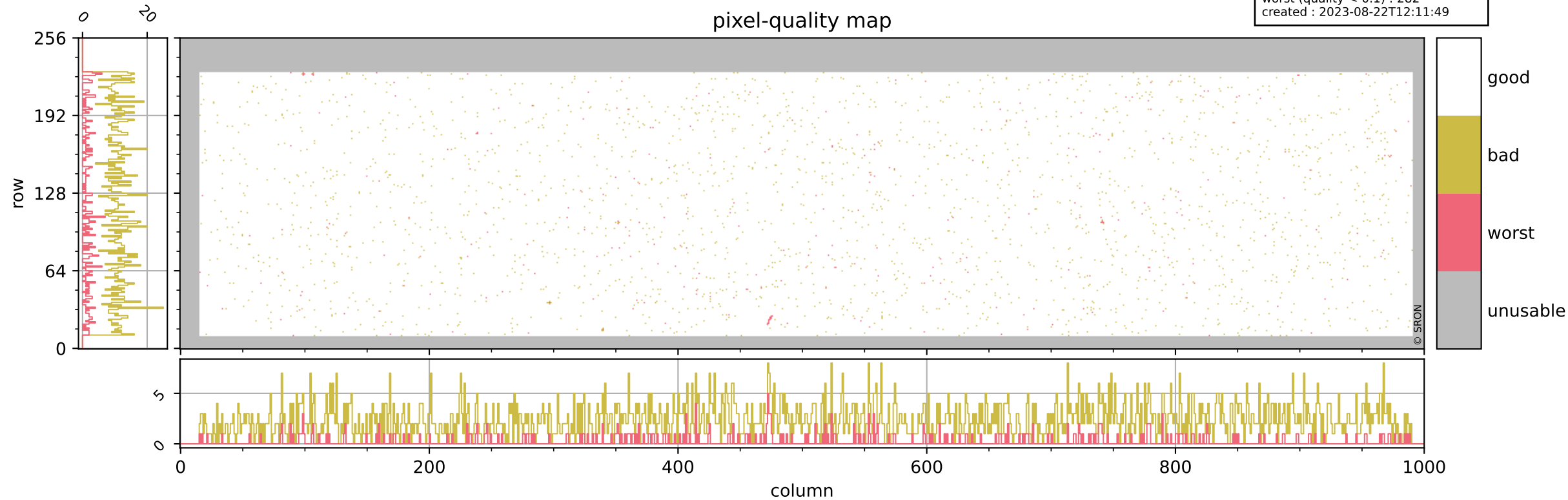


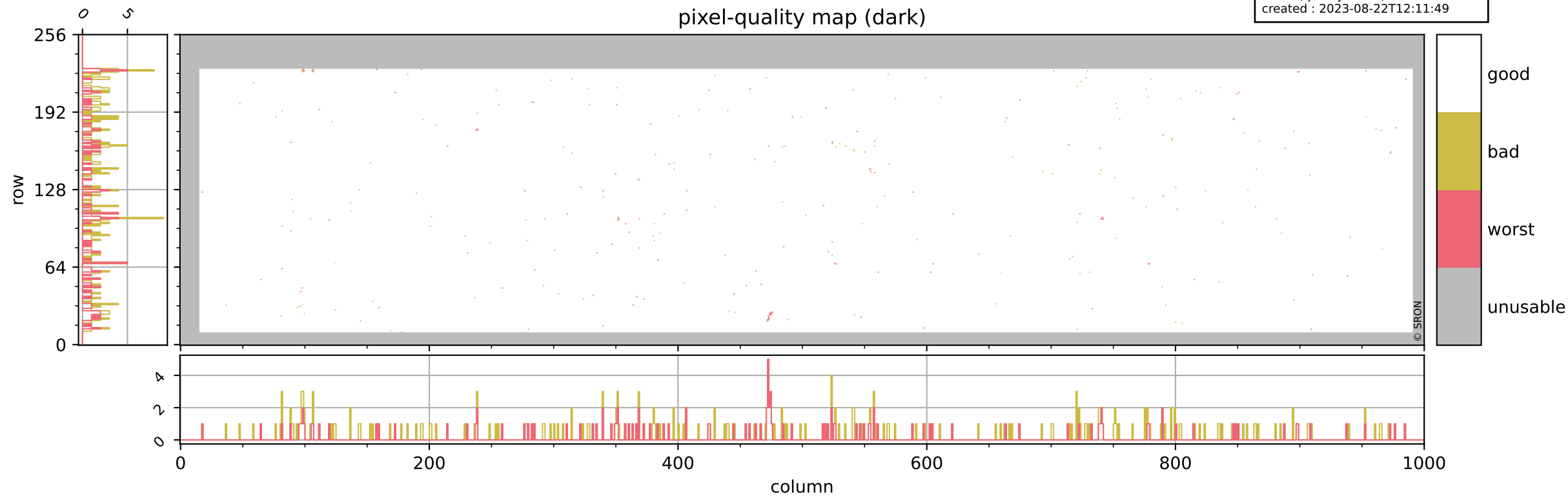
Tropomi SWIR pixel quality (beta nominal)

orbits : 20 in [23482, 23527]
coverage : 2022-04-25 / 2022-04-28
bad (quality < 0.8) : 2403
worst (quality < 0.1) : 282
created : 2023-08-22T12:11:49



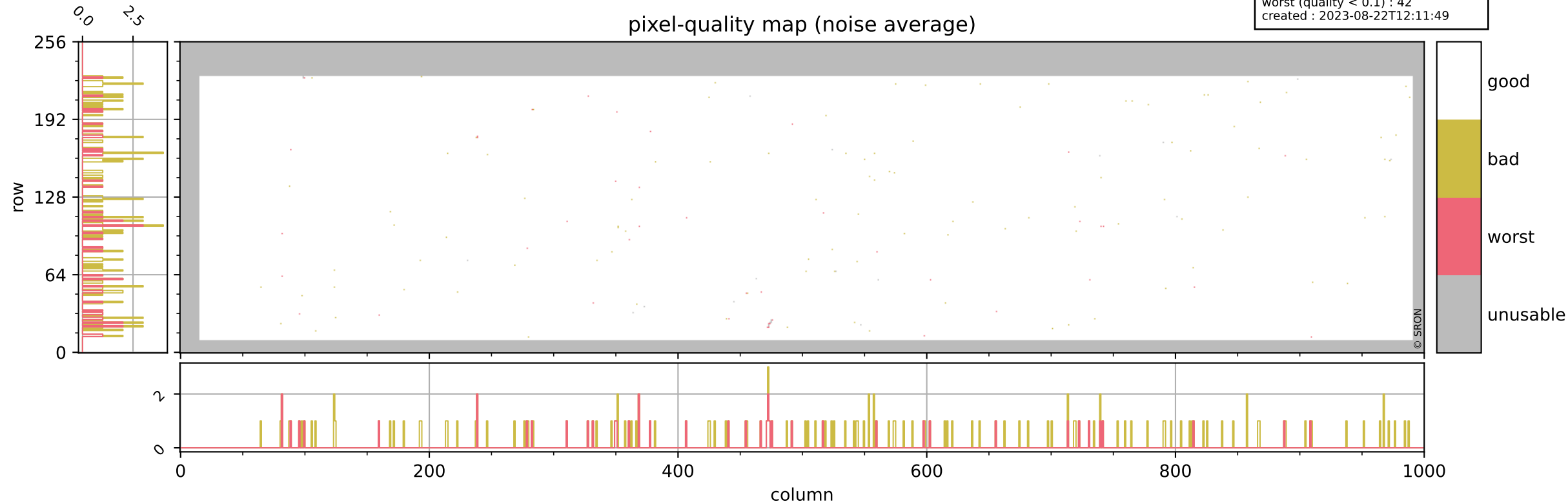
Tropomi SWIR pixel quality (beta nominal)

orbits : 20 in [23482, 23527]
coverage : 2022-04-25 / 2022-04-28
bad (quality < 0.8) : 292
worst (quality < 0.1) : 121
created : 2023-08-22T12:11:49



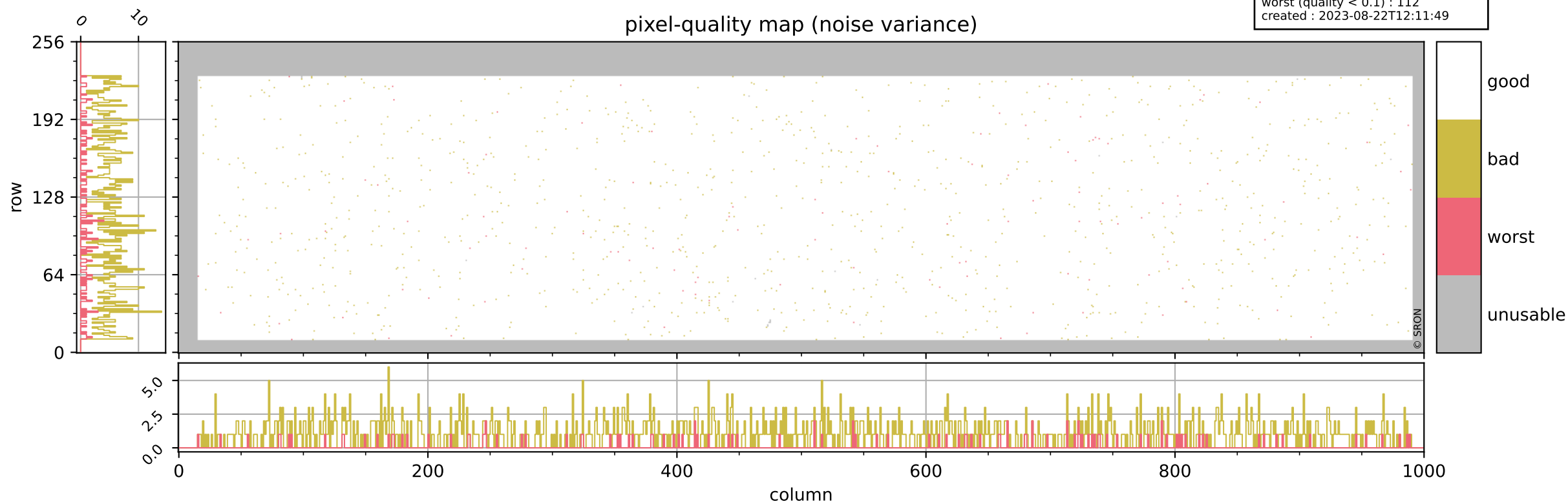
Tropomi SWIR pixel quality (beta nominal)

orbits : 20 in [23482, 23527]
coverage : 2022-04-25 / 2022-04-28
bad (quality < 0.8) : 146
worst (quality < 0.1) : 42
created : 2023-08-22T12:11:49



Tropomi SWIR pixel quality (beta nominal)

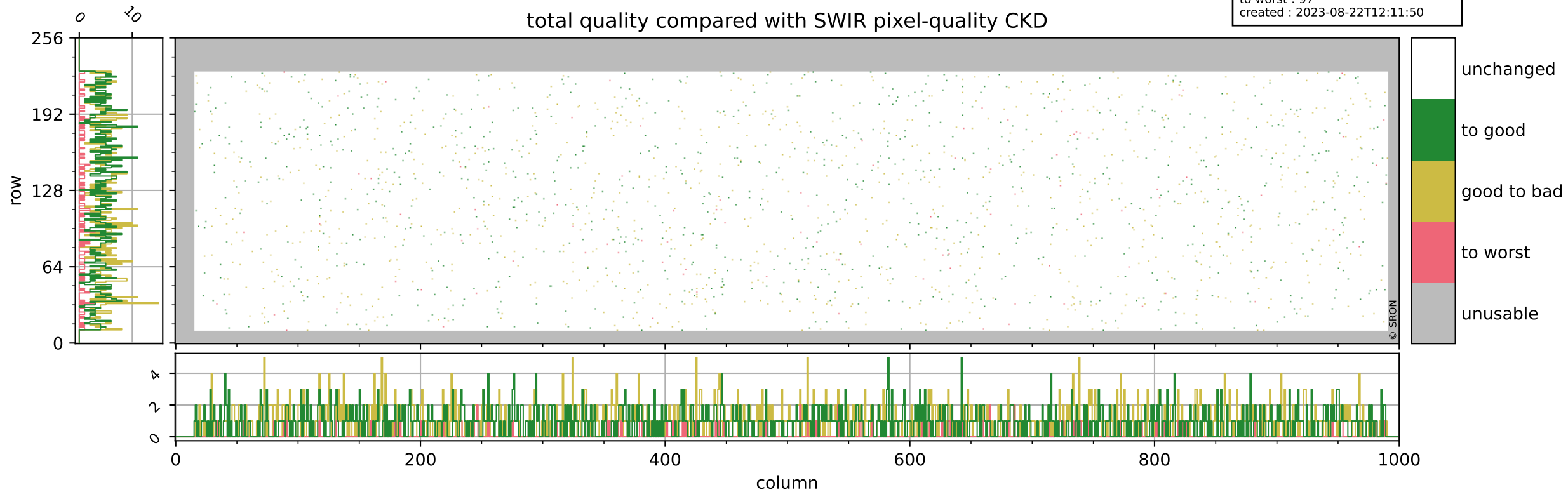
orbits : 20 in [23482, 23527]
coverage : 2022-04-25 / 2022-04-28
bad (quality < 0.8) : 1084
worst (quality < 0.1) : 112
created : 2023-08-22T12:11:49



Tropomi SWIR pixel quality (beta nominal)

orbits : 20 in [23482, 23527]
coverage : 2022-04-25 / 2022-04-28
to good : 868
good to bad : 904
to worst : 97
created : 2023-08-22T12:11:50

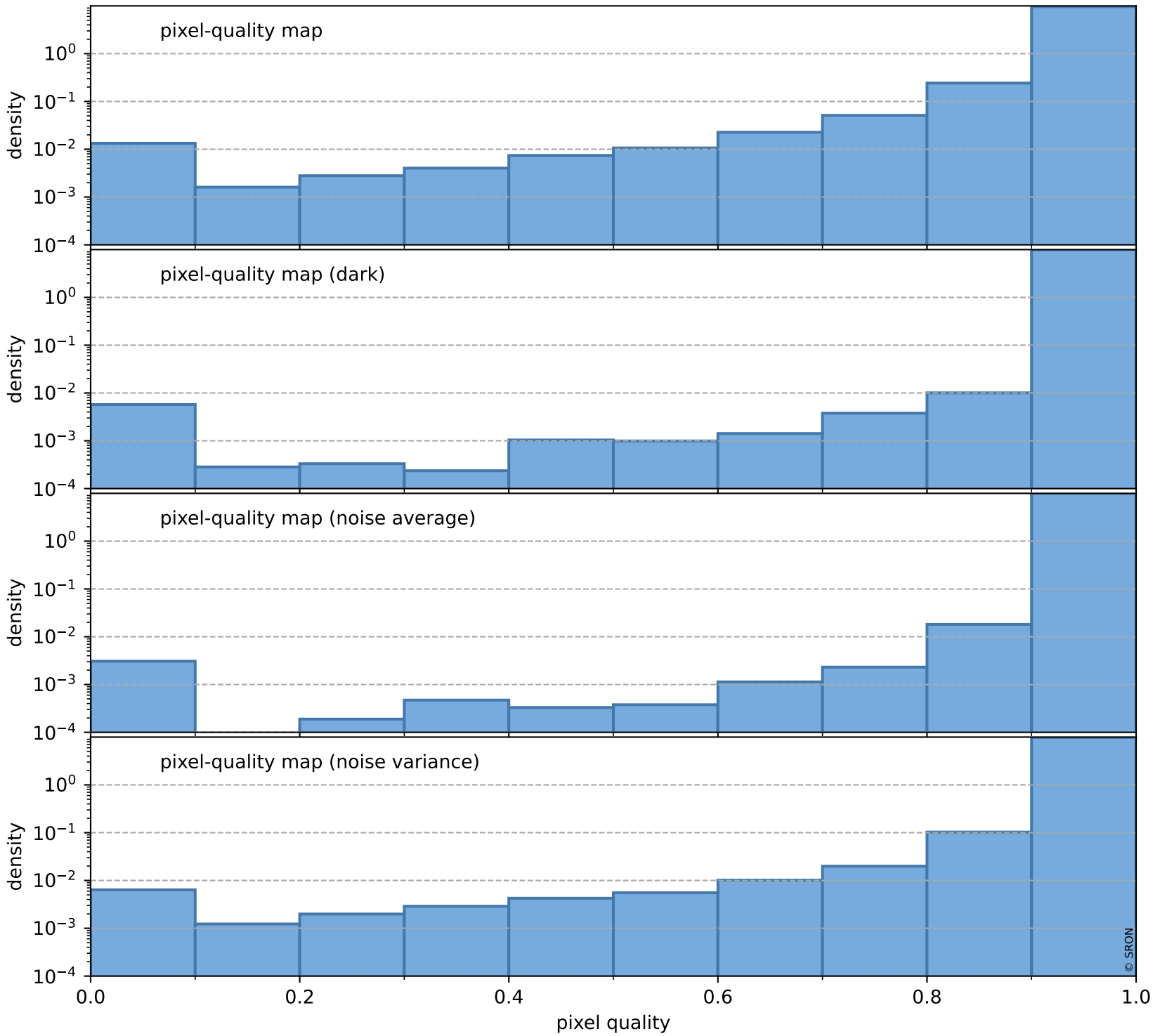
total quality compared with SWIR pixel-quality CKD



Tropomi SWIR pixel quality (beta nominal)

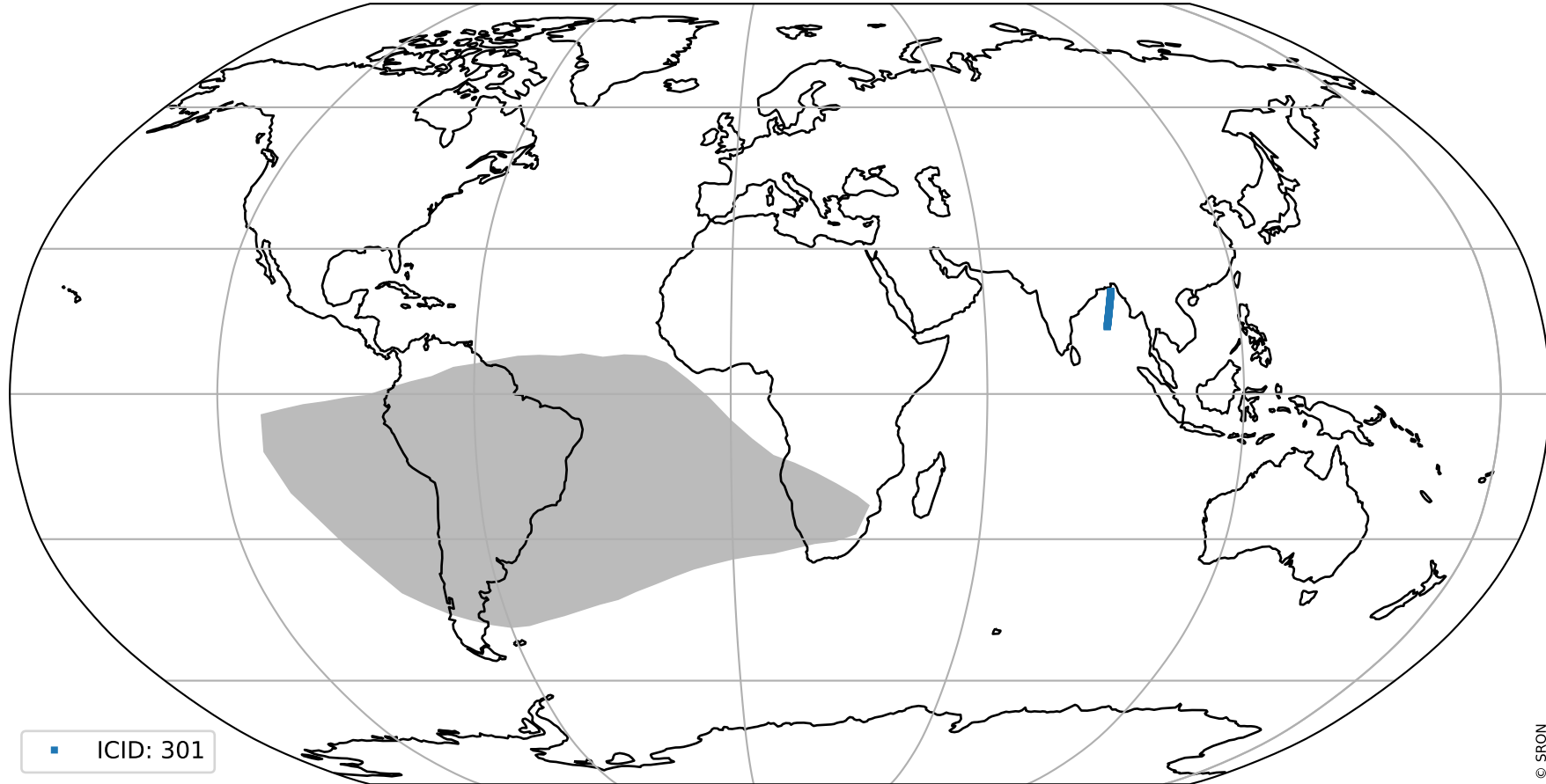
orbits : 20 in [23482, 23527]
coverage : 2022-04-25 / 2022-04-28
created : 2023-08-22T12:11:50

Histograms of pixel-quality



Tropomi SWIR pixel quality (beta nominal) ground-tracks of Sentinel-5P

orbits : 20 in [23482, 23527]
coverage : 2022-04-25 / 2022-04-28
created : 2023-08-22T12:11:51



■ ICID: 301

Tropomi SWIR pixel quality (beta nominal)

orbits : [1867, 23527]
coverage : 2018-02-20 / 2022-04-28
created : 2023-08-22T12:11:51

trend of pixel quality & temperatures

