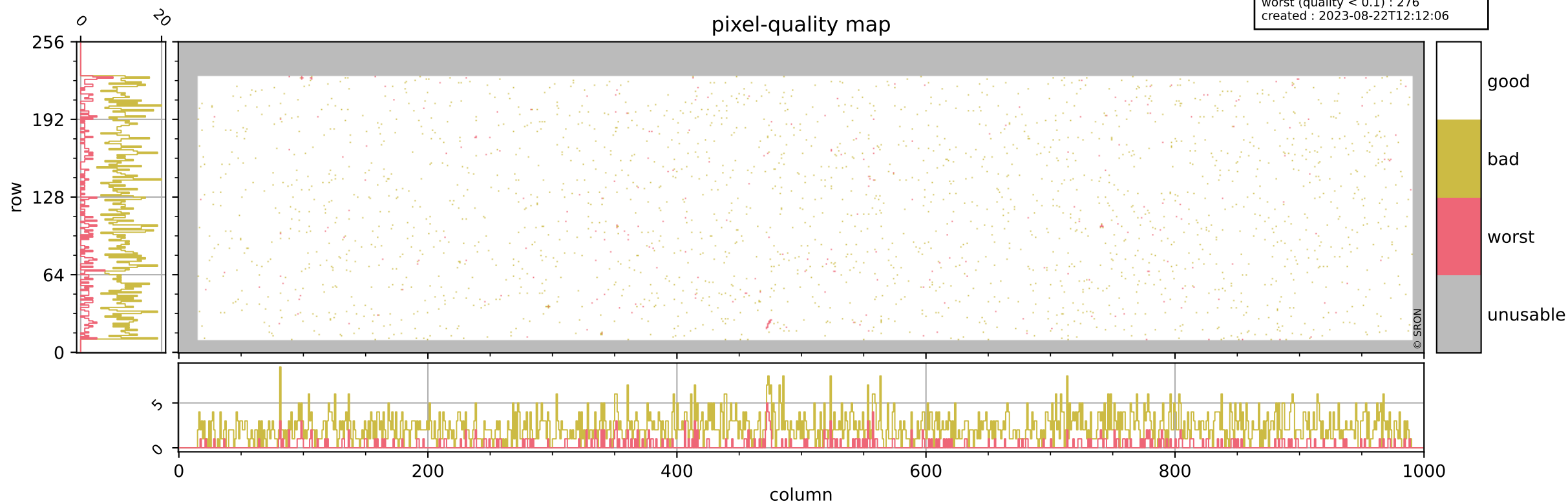


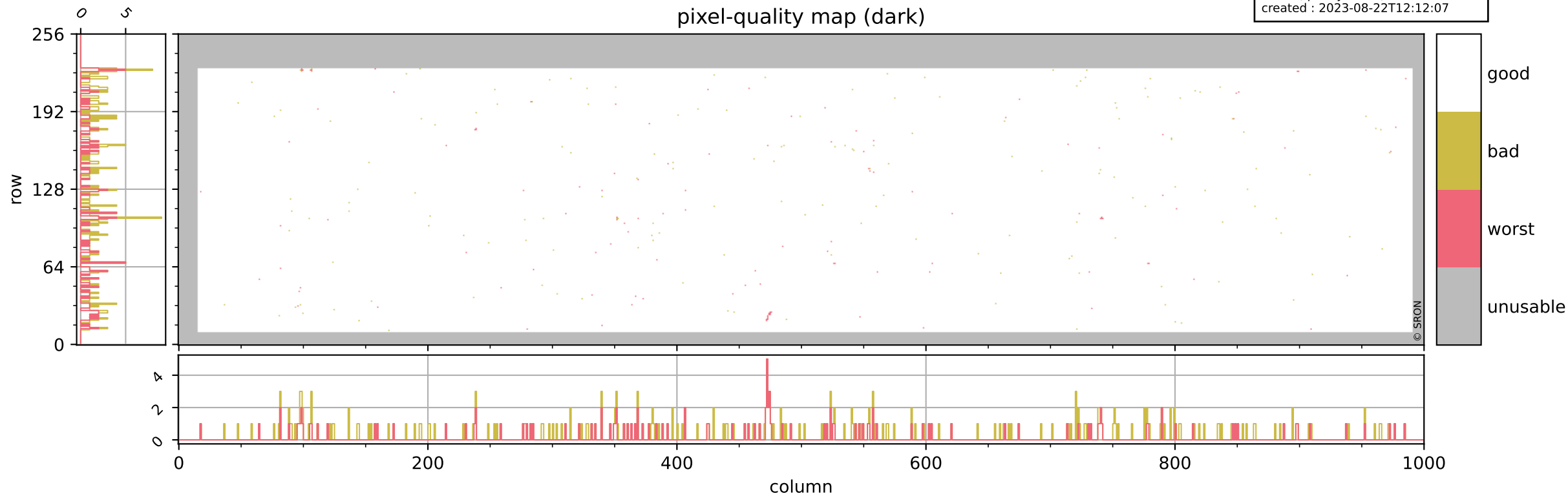
# Tropomi SWIR pixel quality (beta nominal)

orbits : 20 in [23752, 23797]  
coverage : 2022-05-14 / 2022-05-17  
bad (quality < 0.8) : 2315  
worst (quality < 0.1) : 276  
created : 2023-08-22T12:12:06



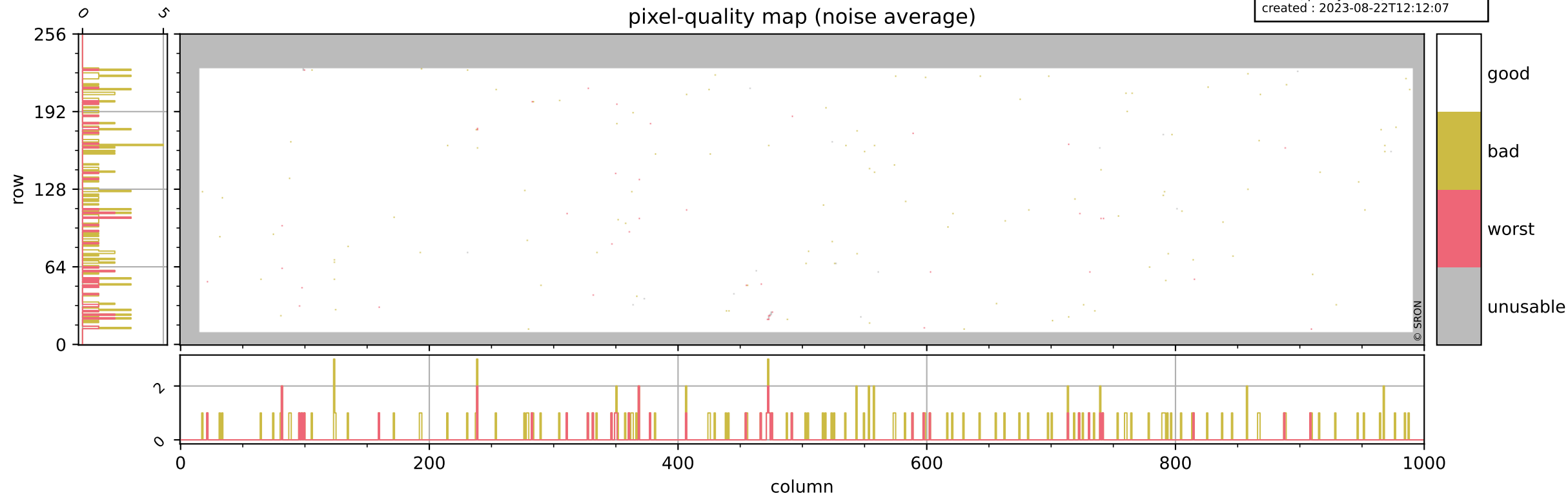
# Tropomi SWIR pixel quality (beta nominal)

orbits : 20 in [23752, 23797]  
coverage : 2022-05-14 / 2022-05-17  
bad (quality < 0.8) : 286  
worst (quality < 0.1) : 122  
created : 2023-08-22T12:12:07



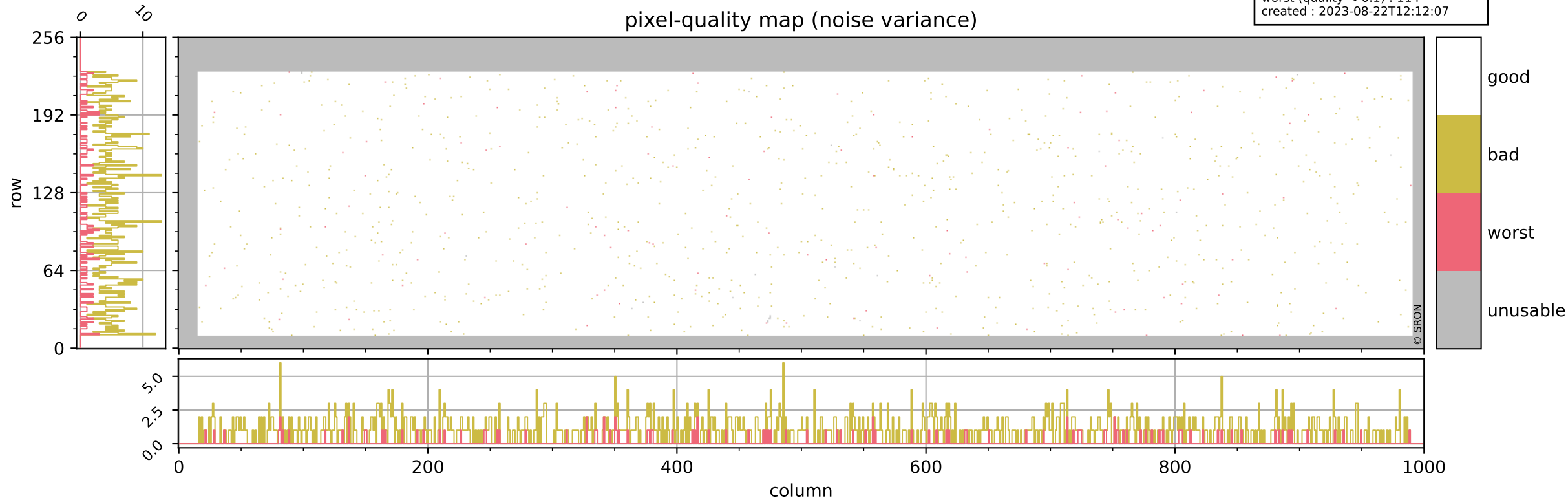
# Tropomi SWIR pixel quality (beta nominal)

orbits : 20 in [23752, 23797]  
coverage : 2022-05-14 / 2022-05-17  
bad (quality < 0.8) : 149  
worst (quality < 0.1) : 40  
created : 2023-08-22T12:12:07



# Tropomi SWIR pixel quality (beta nominal)

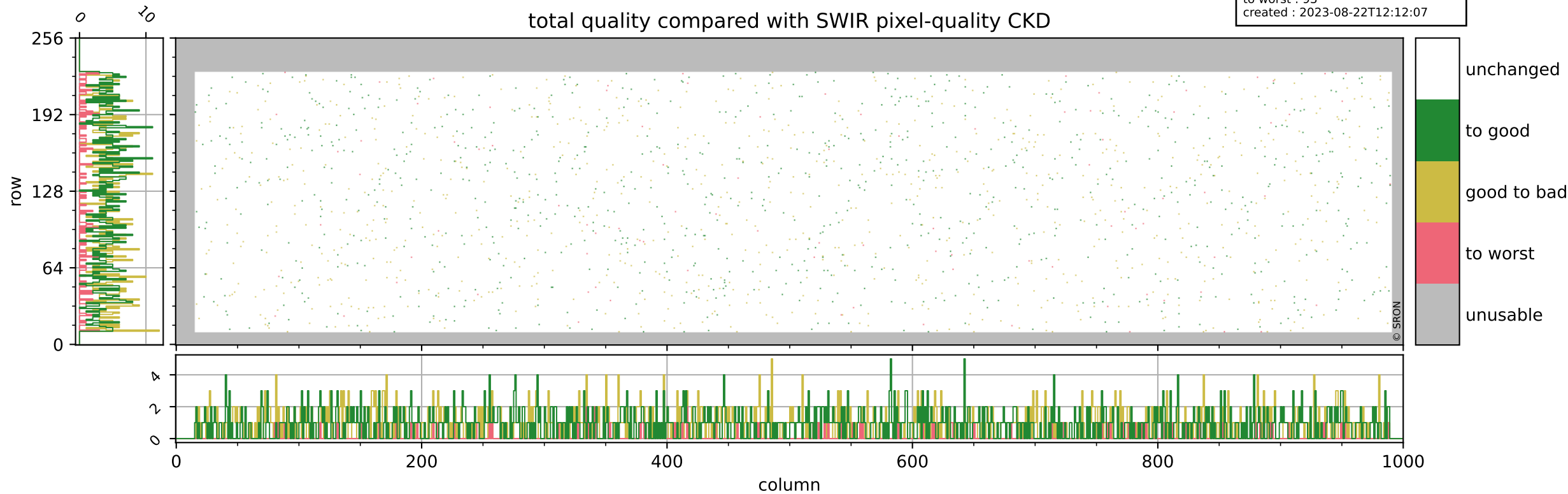
orbits : 20 in [23752, 23797]  
coverage : 2022-05-14 / 2022-05-17  
bad (quality < 0.8) : 1001  
worst (quality < 0.1) : 114  
created : 2023-08-22T12:12:07



# Tropomi SWIR pixel quality (beta nominal)

orbits : 20 in [23752, 23797]  
coverage : 2022-05-14 / 2022-05-17  
to good : 869  
good to bad : 820  
to worst : 93  
created : 2023-08-22T12:12:07

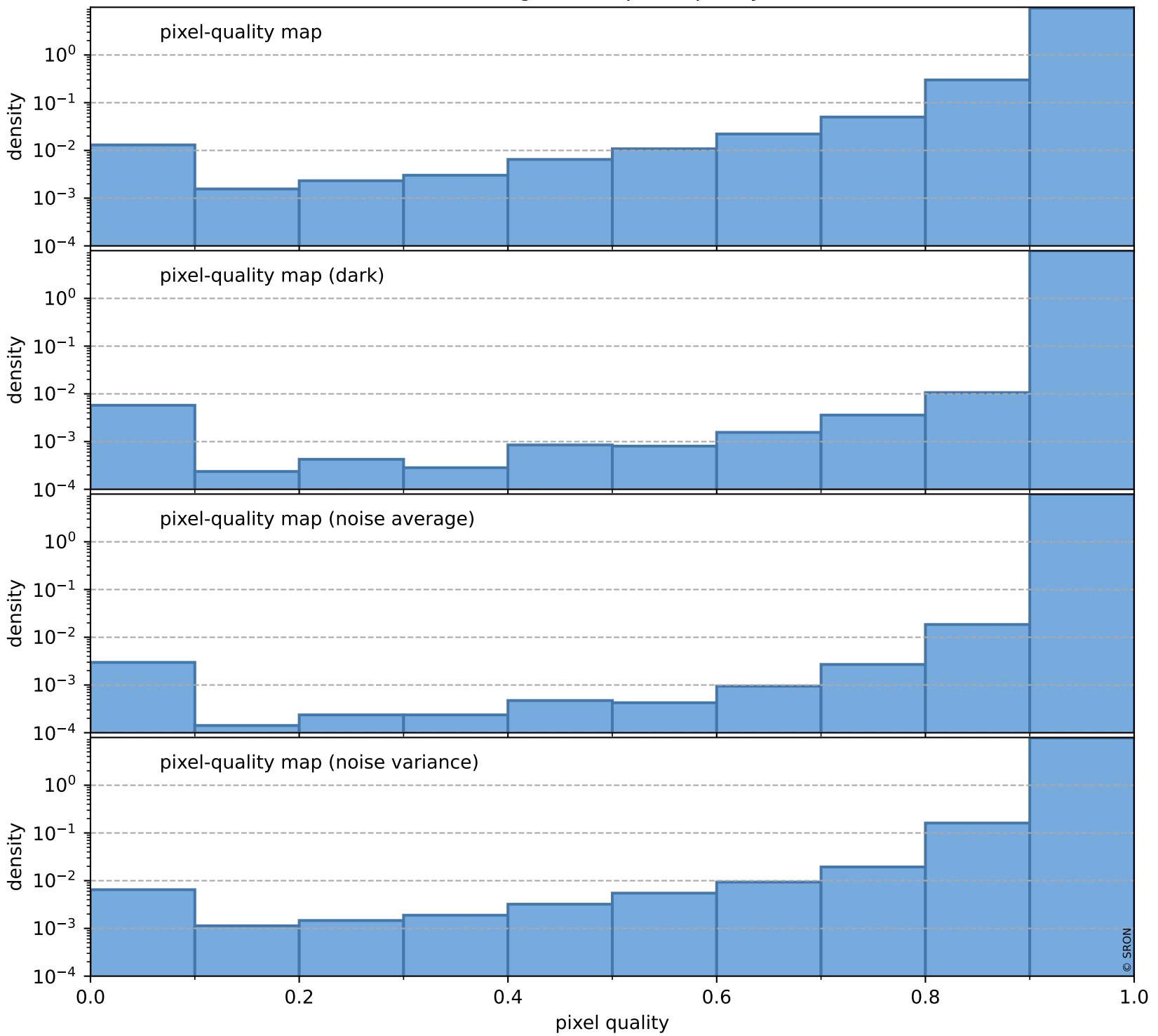
## total quality compared with SWIR pixel-quality CKD



# Tropomi SWIR pixel quality (beta nominal)

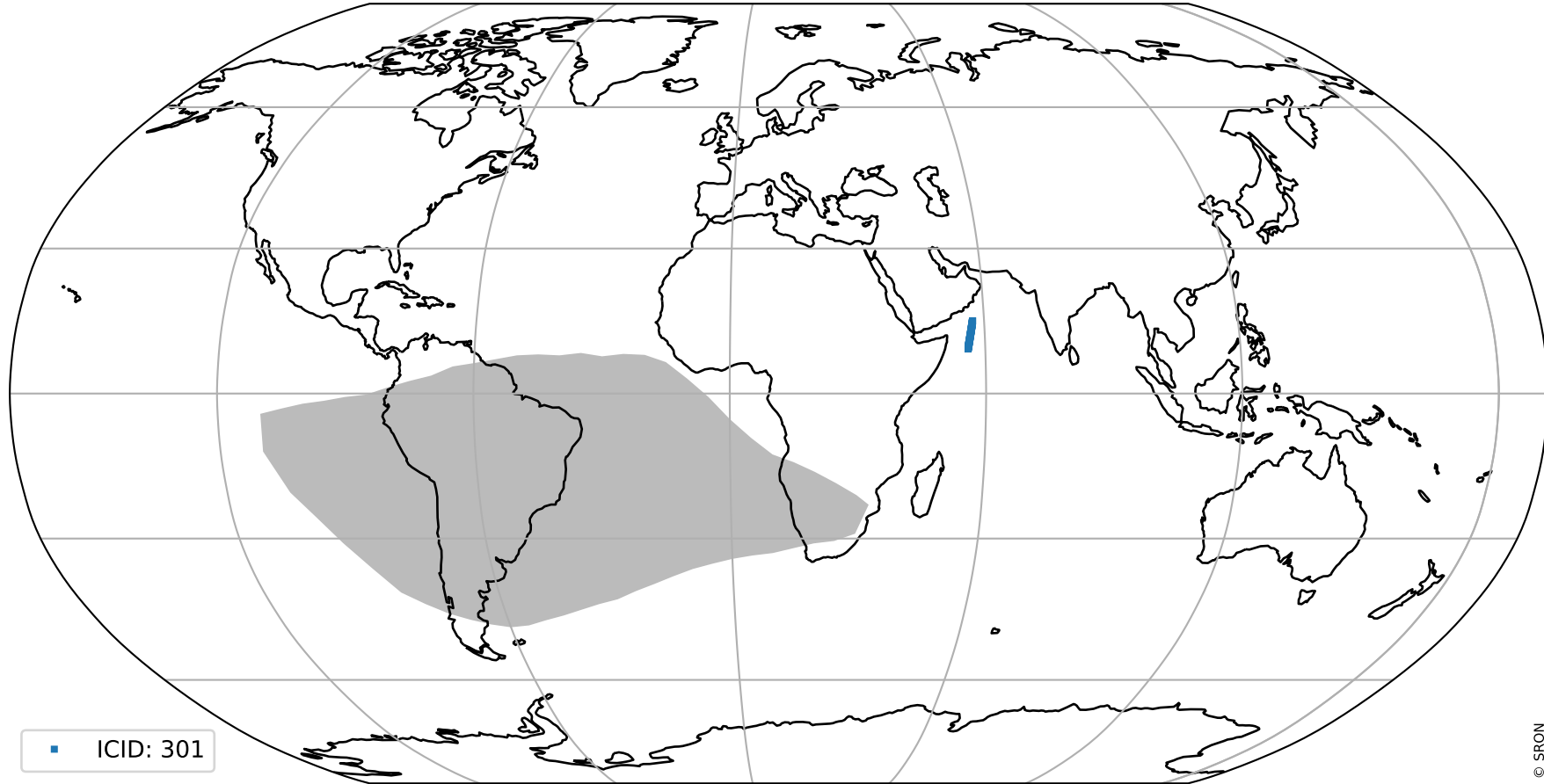
orbits : 20 in [23752, 23797]  
coverage : 2022-05-14 / 2022-05-17  
created : 2023-08-22T12:12:08

## Histograms of pixel-quality



# Tropomi SWIR pixel quality (beta nominal) ground-tracks of Sentinel-5P

orbits : 20 in [23752, 23797]  
coverage : 2022-05-14 / 2022-05-17  
created : 2023-08-22T12:12:08



# Tropomi SWIR pixel quality (beta nominal)

orbits : [1867, 23797]  
coverage : 2018-02-20 / 2022-05-17  
created : 2023-08-22T12:12:08

## trend of pixel quality & temperatures

