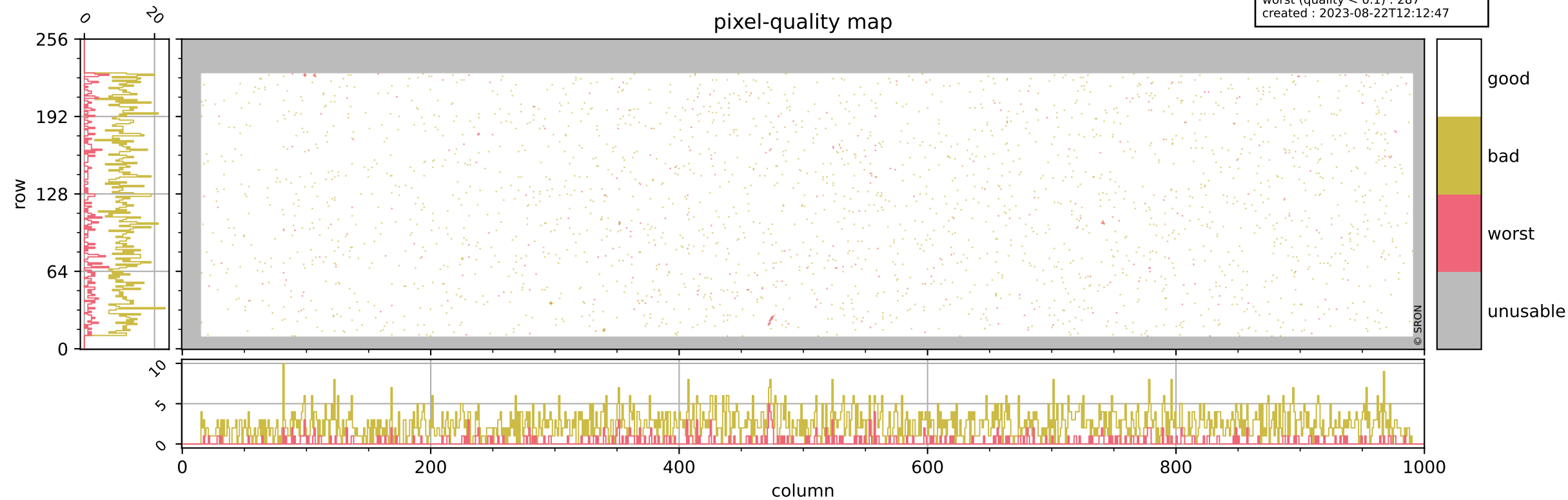


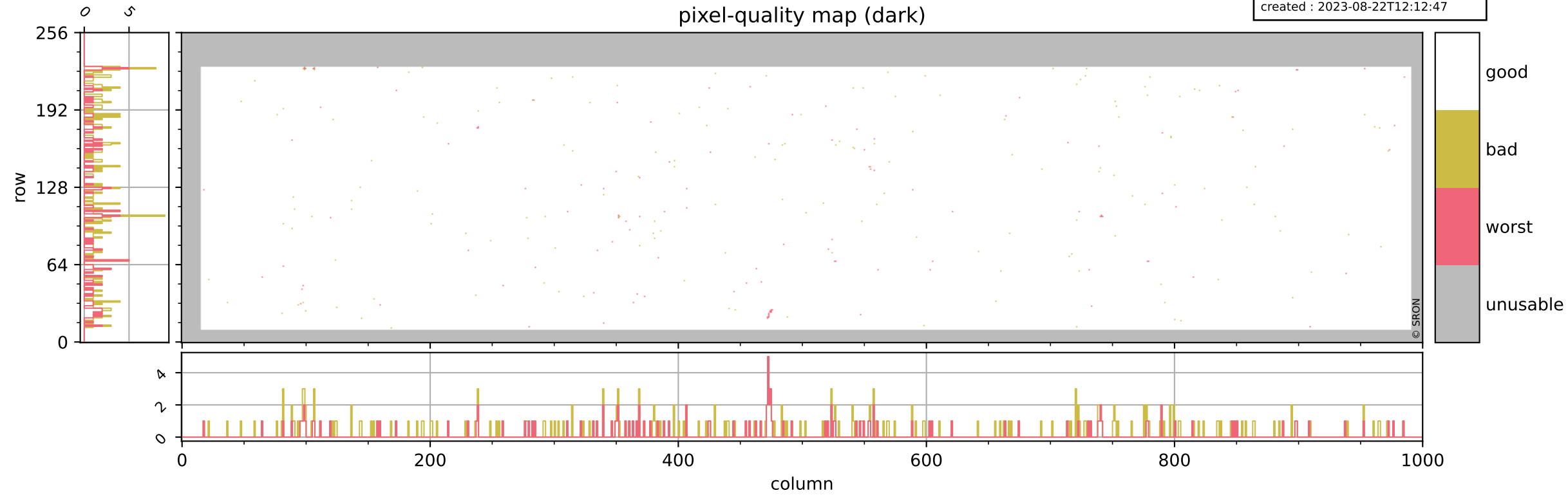
Tropomi SWIR pixel quality (beta nominal)

orbits : 20 in [24382, 24427]
coverage : 2022-06-28 / 2022-07-01
bad (quality < 0.8) : 2481
worst (quality < 0.1) : 287
created : 2023-08-22T12:12:47



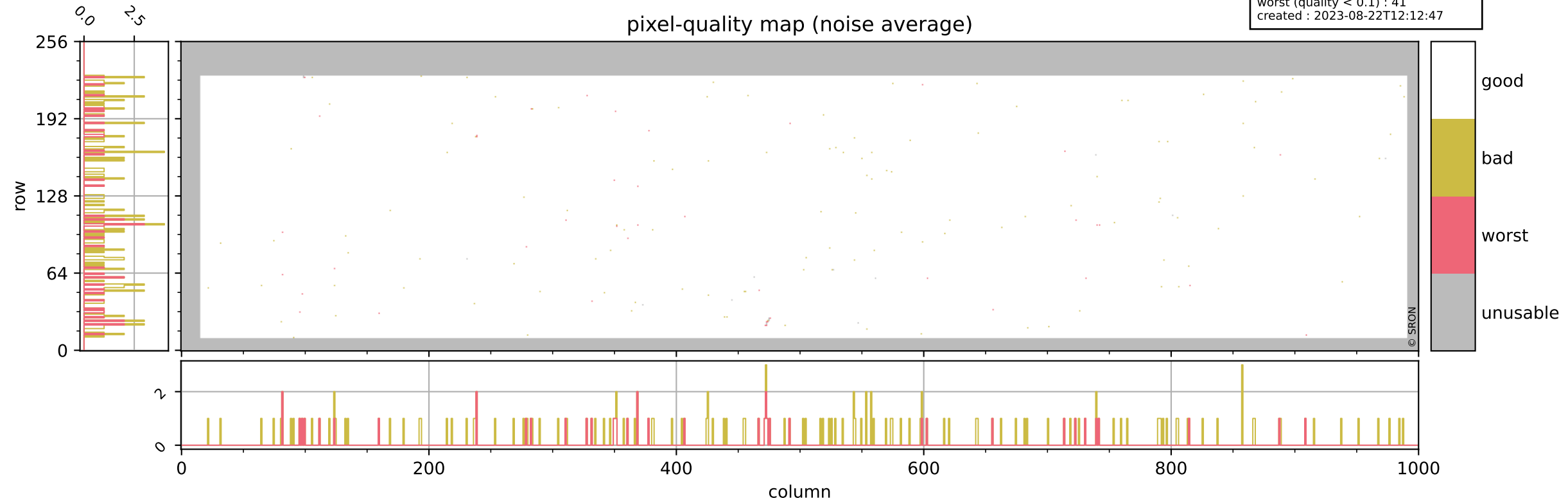
Tropomi SWIR pixel quality (beta nominal)

orbits : 20 in [24382, 24427]
coverage : 2022-06-28 / 2022-07-01
bad (quality < 0.8) : 287
worst (quality < 0.1) : 120
created : 2023-08-22T12:12:47



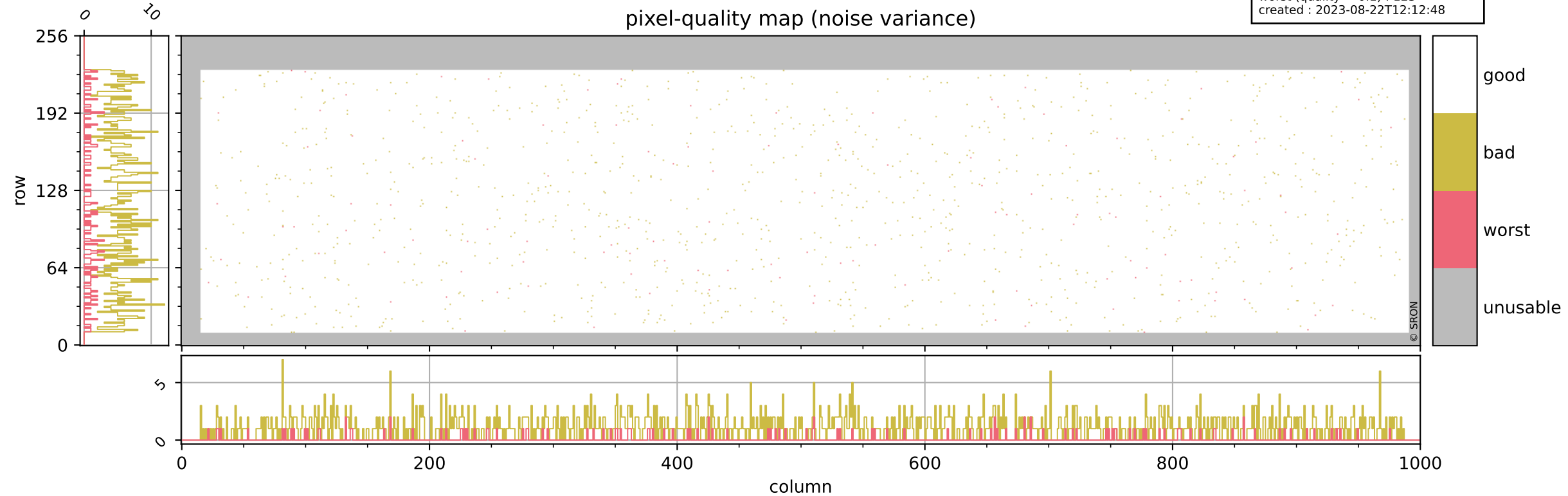
Tropomi SWIR pixel quality (beta nominal)

orbits : 20 in [24382, 24427]
coverage : 2022-06-28 / 2022-07-01
bad (quality < 0.8) : 153
worst (quality < 0.1) : 41
created : 2023-08-22T12:12:47



Tropomi SWIR pixel quality (beta nominal)

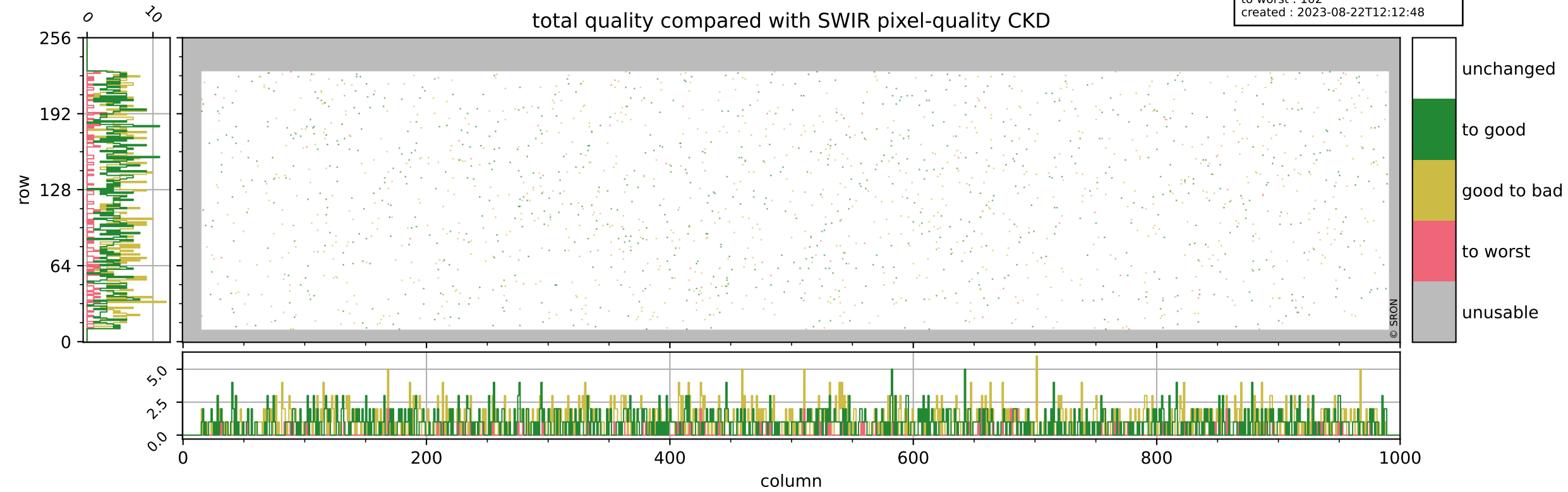
orbits : 20 in [24382, 24427]
coverage : 2022-06-28 / 2022-07-01
bad (quality < 0.8) : 1170
worst (quality < 0.1) : 123
created : 2023-08-22T12:12:48



Tropomi SWIR pixel quality (beta nominal)

orbits : 20 in [24382, 24427]
coverage : 2022-06-28 / 2022-07-01
to good : 855
good to bad : 959
to worst : 102
created : 2023-08-22T12:12:48

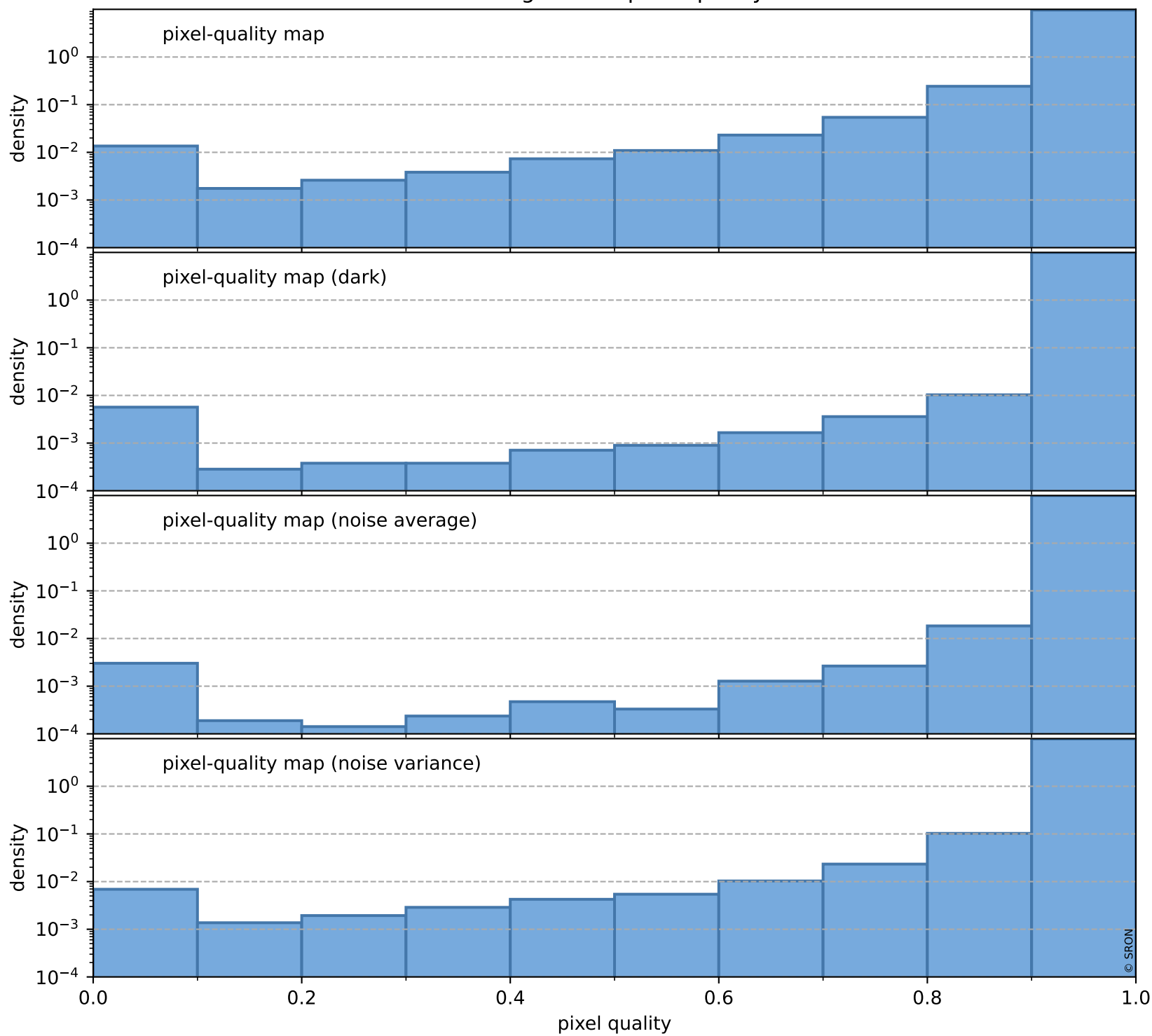
total quality compared with SWIR pixel-quality CKD



Tropomi SWIR pixel quality (beta nominal)

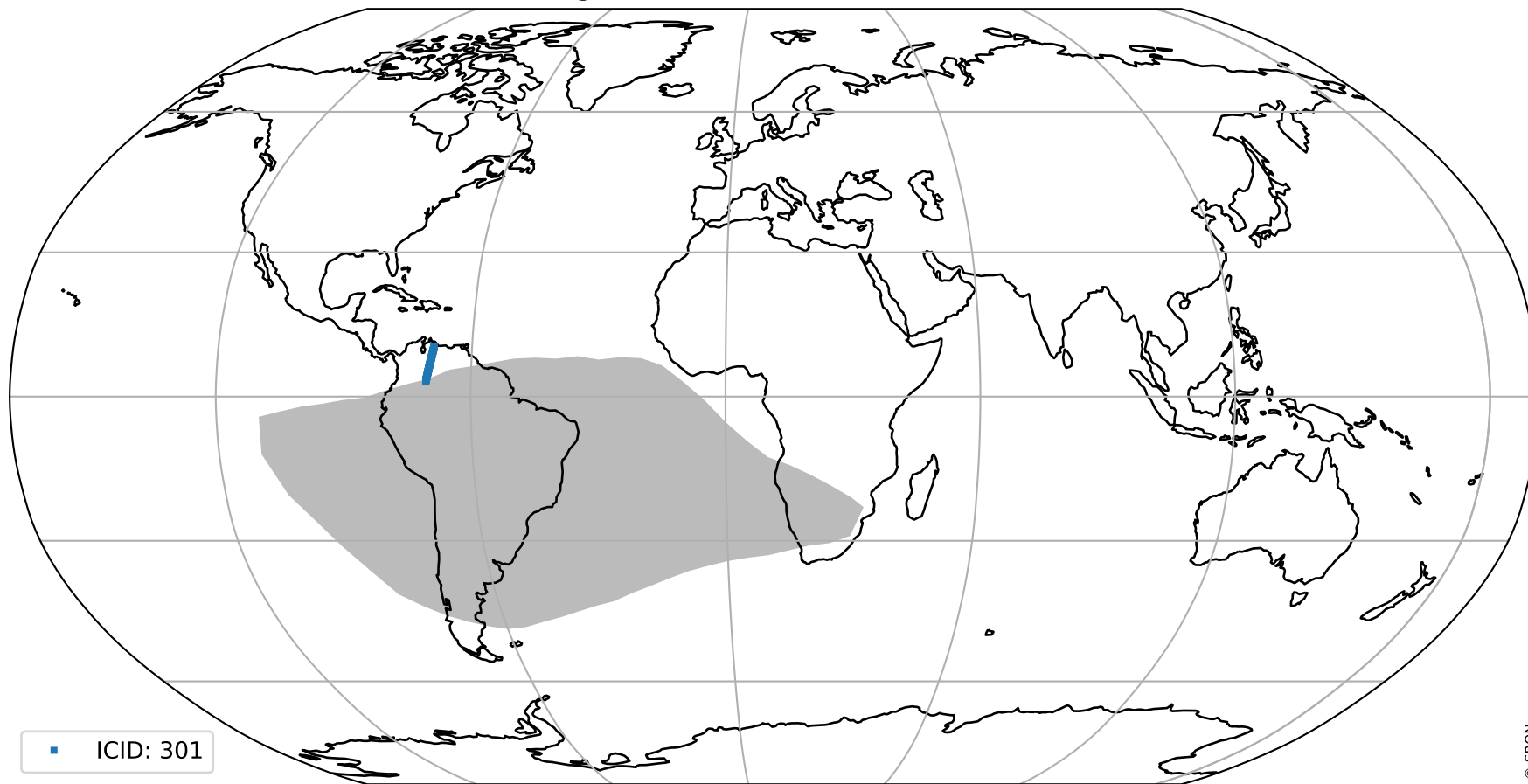
orbits : 20 in [24382, 24427]
coverage : 2022-06-28 / 2022-07-01
created : 2023-08-22T12:12:48

Histograms of pixel-quality



Tropomi SWIR pixel quality (beta nominal) ground-tracks of Sentinel-5P

orbits : 20 in [24382, 24427]
coverage : 2022-06-28 / 2022-07-01
created : 2023-08-22T12:12:49



Tropomi SWIR pixel quality (beta nominal)

orbits : [1867, 24427]
coverage : 2018-02-20 / 2022-07-01
created : 2023-08-22T12:49

trend of pixel quality & temperatures

