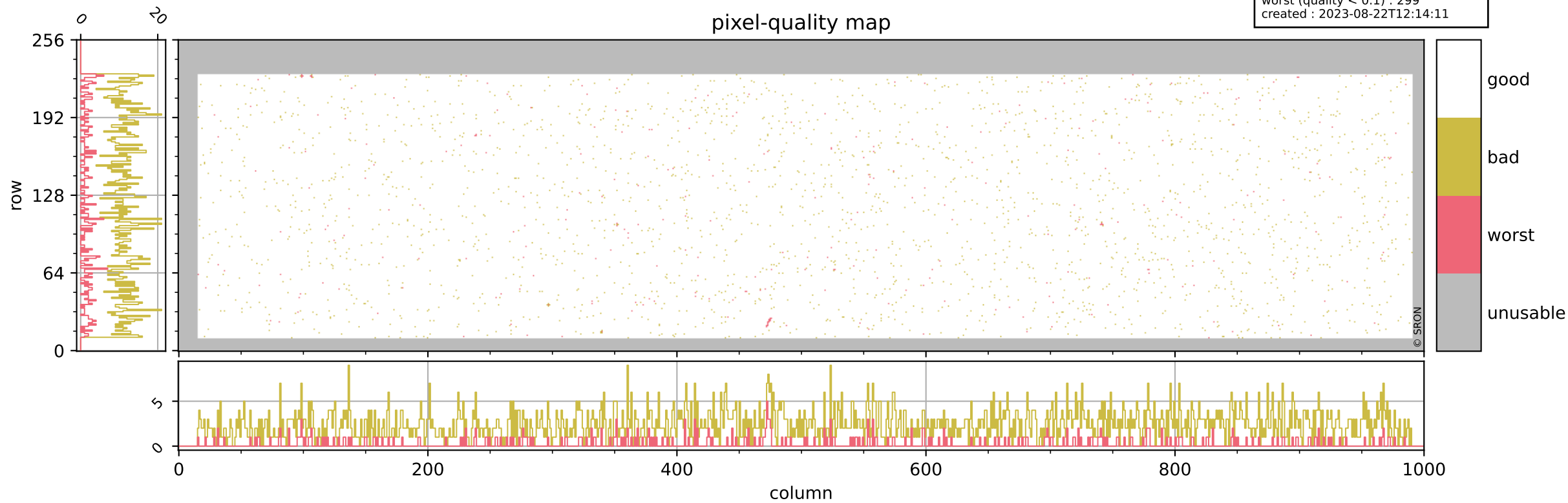


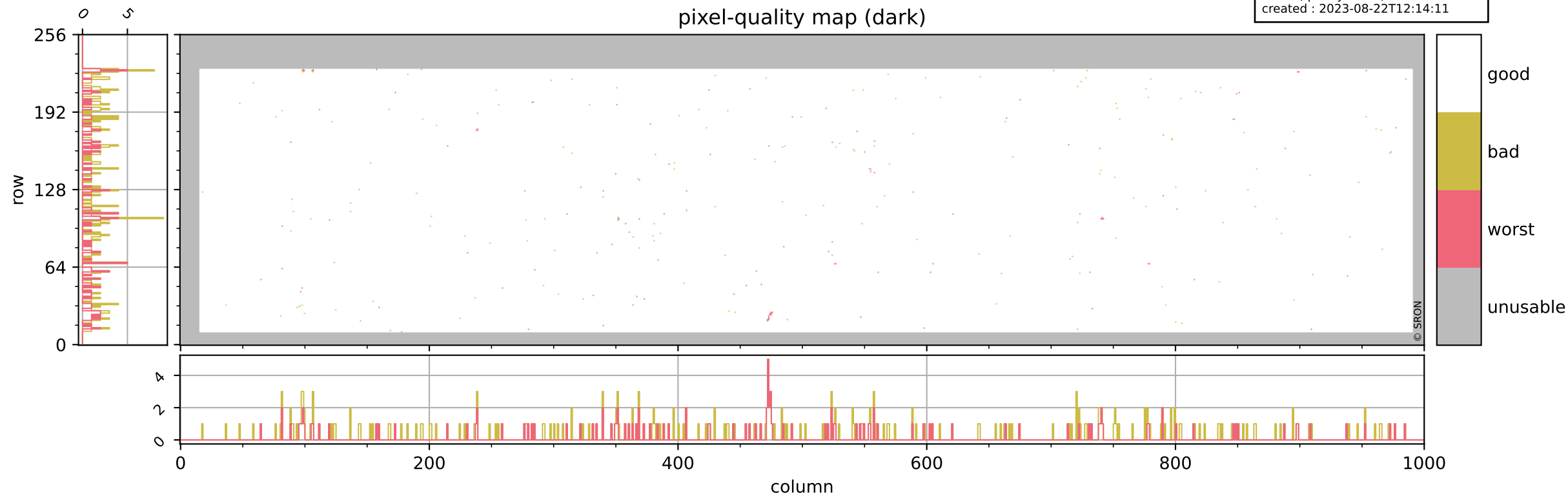
# Tropomi SWIR pixel quality (beta nominal)

orbits : 20 in [25732, 25777]  
coverage : 2022-10-01 / 2022-10-04  
bad (quality < 0.8) : 2473  
worst (quality < 0.1) : 299  
created : 2023-08-22T12:14:11



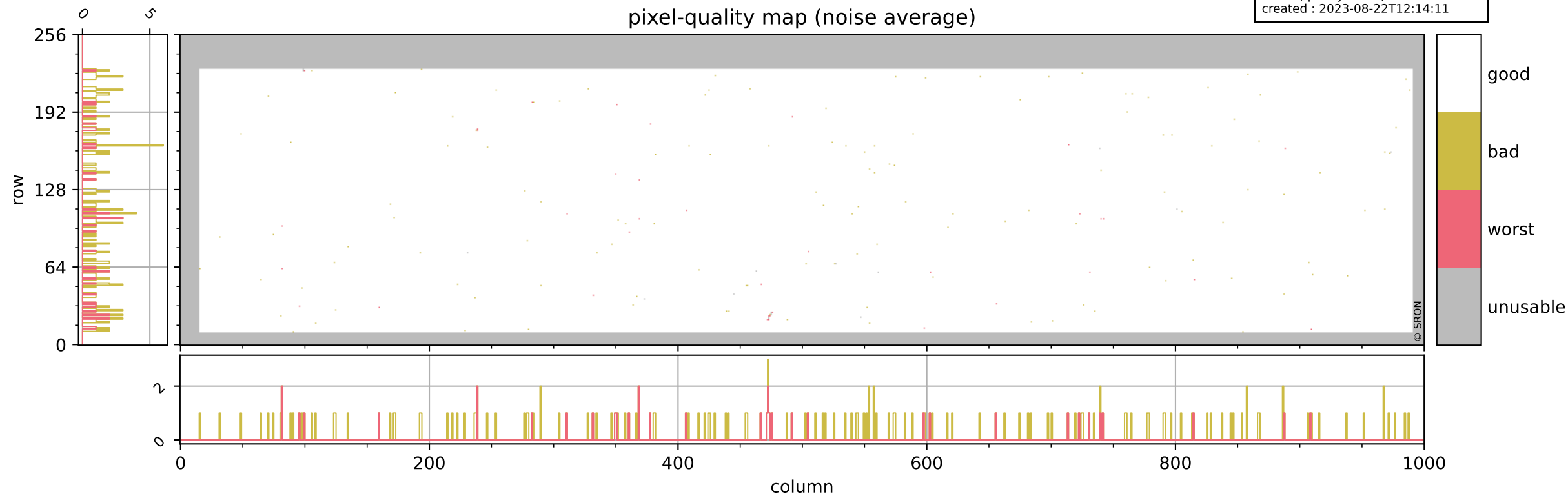
# Tropomi SWIR pixel quality (beta nominal)

orbits : 20 in [25732, 25777]  
coverage : 2022-10-01 / 2022-10-04  
bad (quality < 0.8) : 292  
worst (quality < 0.1) : 121  
created : 2023-08-22T12:14:11



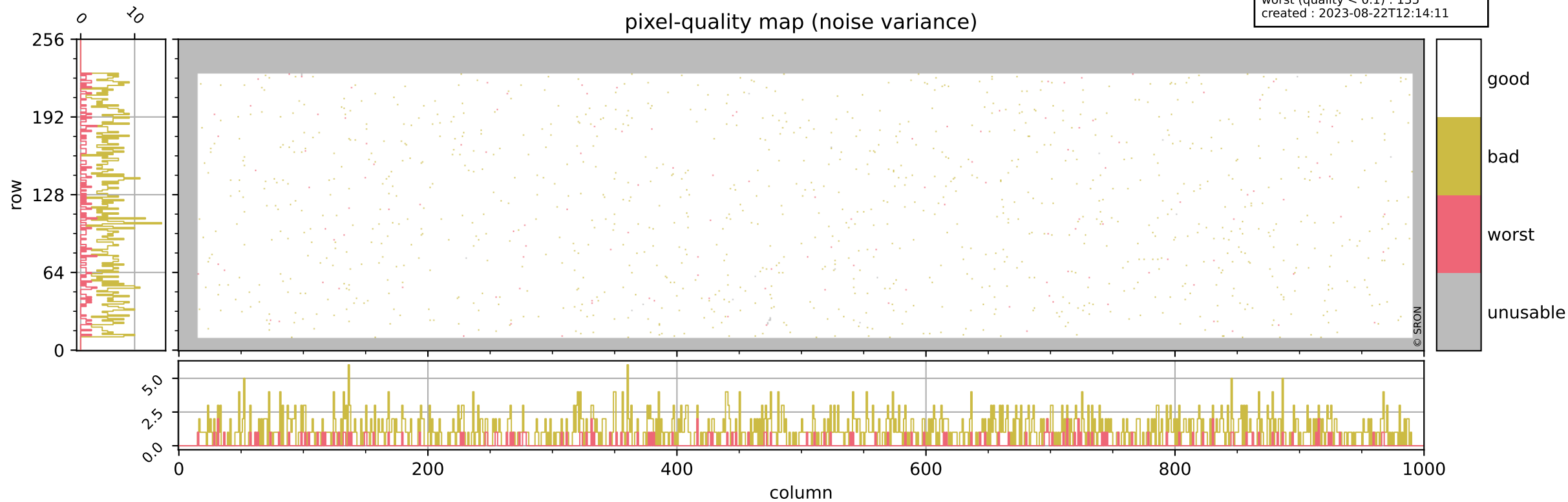
# Tropomi SWIR pixel quality (beta nominal)

orbits : 20 in [25732, 25777]  
coverage : 2022-10-01 / 2022-10-04  
bad (quality < 0.8) : 161  
worst (quality < 0.1) : 36  
created : 2023-08-22T12:14:11



# Tropomi SWIR pixel quality (beta nominal)

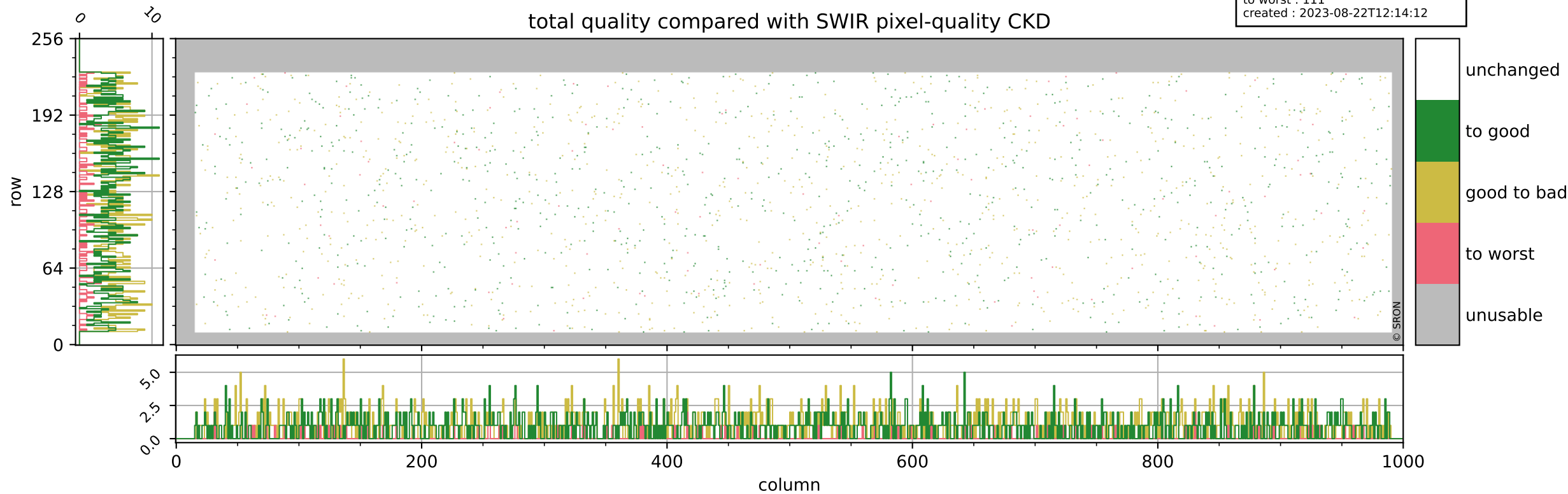
orbits : 20 in [25732, 25777]  
coverage : 2022-10-01 / 2022-10-04  
bad (quality < 0.8) : 1150  
worst (quality < 0.1) : 135  
created : 2023-08-22T12:14:11



# Tropomi SWIR pixel quality (beta nominal)

orbits : 20 in [25732, 25777]  
coverage : 2022-10-01 / 2022-10-04  
to good : 864  
good to bad : 951  
to worst : 111  
created : 2023-08-22T12:14:12

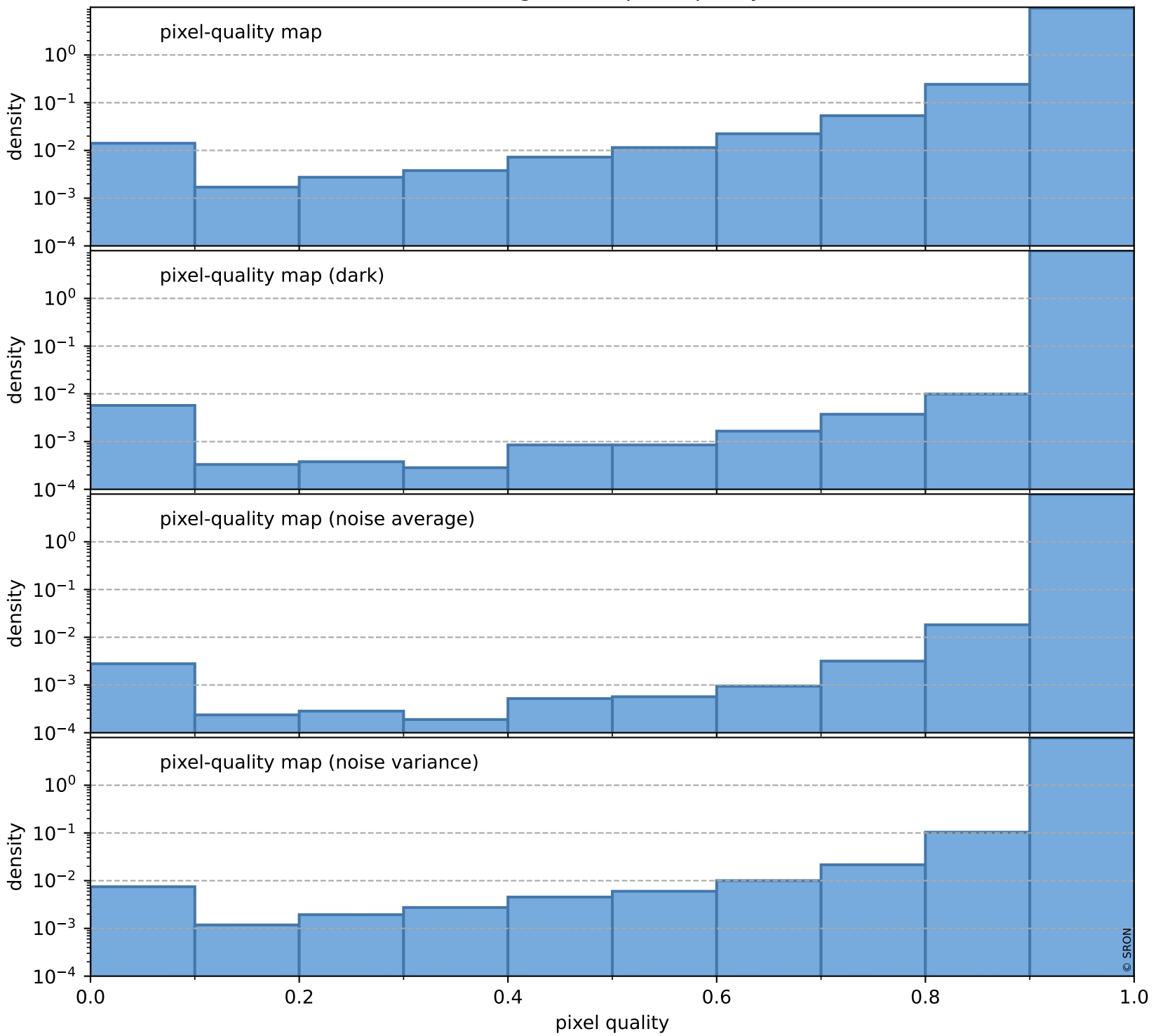
## total quality compared with SWIR pixel-quality CKD



# Tropomi SWIR pixel quality (beta nominal)

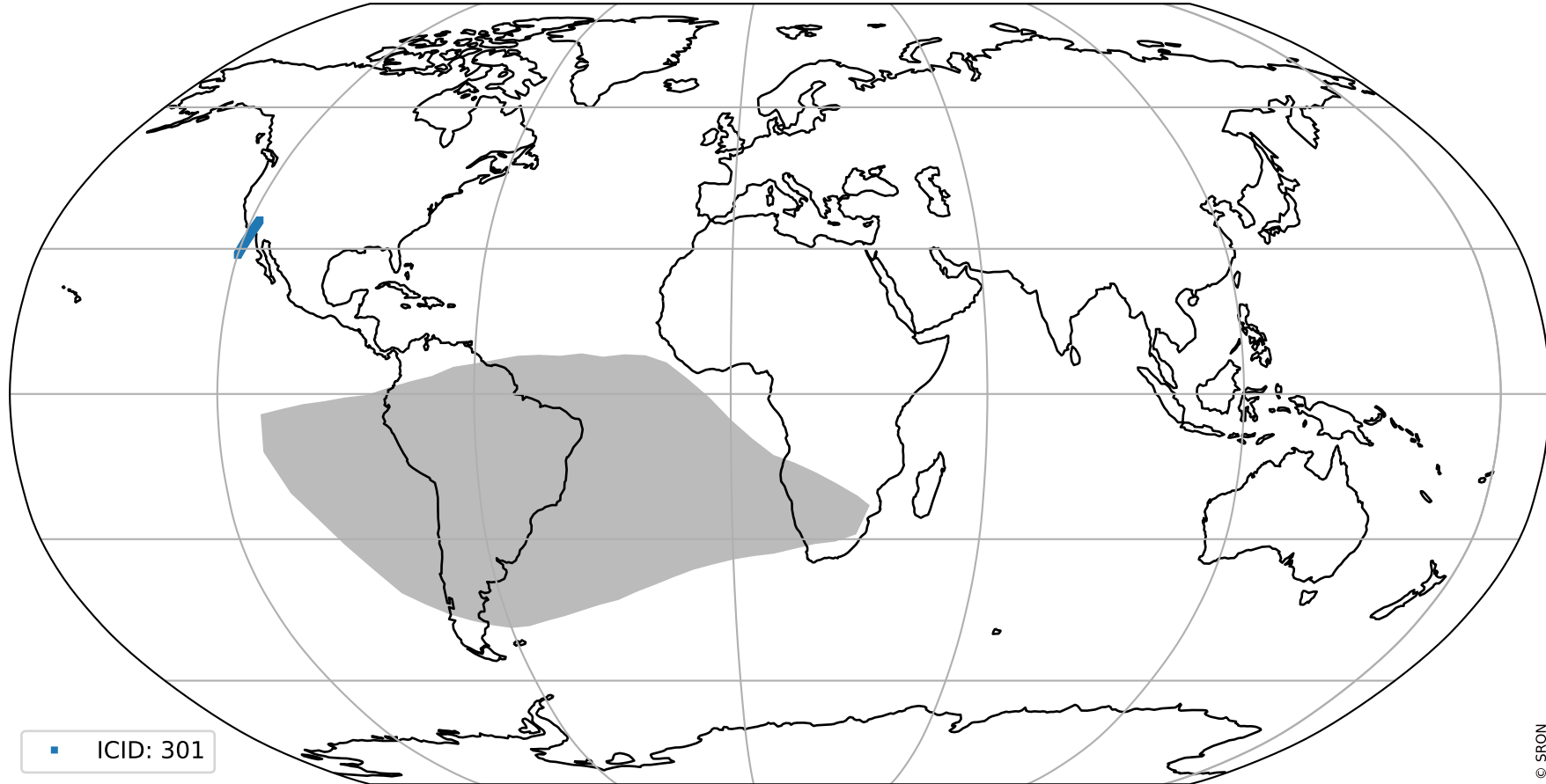
orbits : 20 in [25732, 25777]  
coverage : 2022-10-01 / 2022-10-04  
created : 2023-08-22T12:14:12

## Histograms of pixel-quality



# Tropomi SWIR pixel quality (beta nominal) ground-tracks of Sentinel-5P

orbits : 20 in [25732, 25777]  
coverage : 2022-10-01 / 2022-10-04  
created : 2023-08-22T12:14:13



# Tropomi SWIR pixel quality (beta nominal)

orbits : [1867, 25777]  
coverage : 2018-02-20 / 2022-10-04  
created : 2023-08-22T12:14:13

## trend of pixel quality & temperatures

