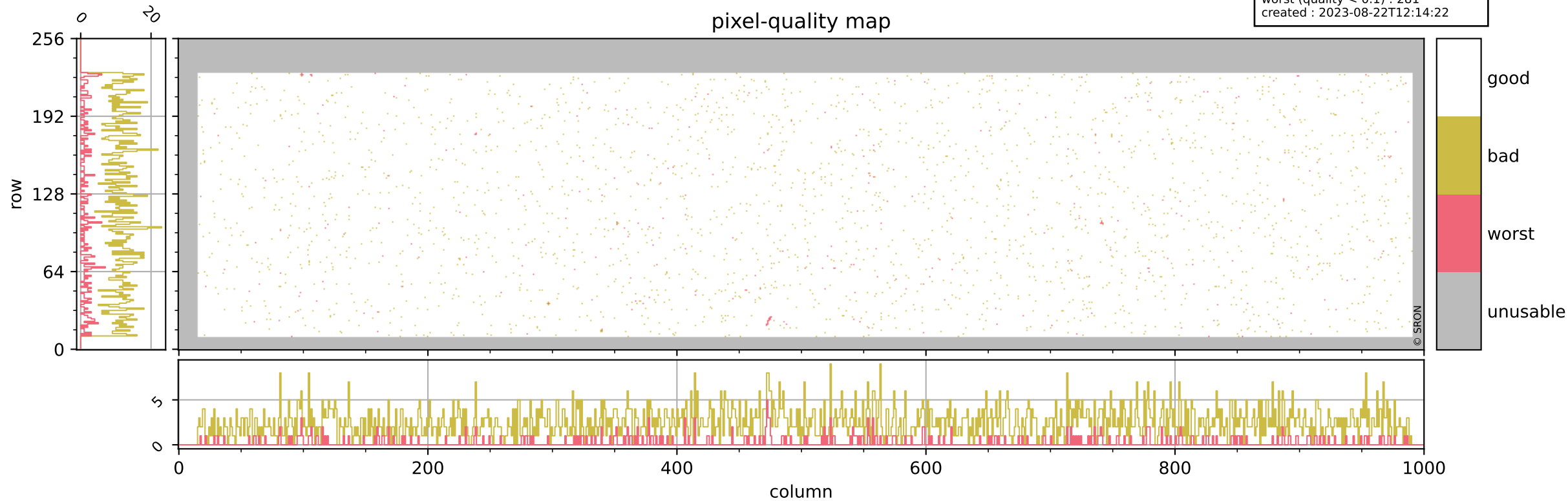


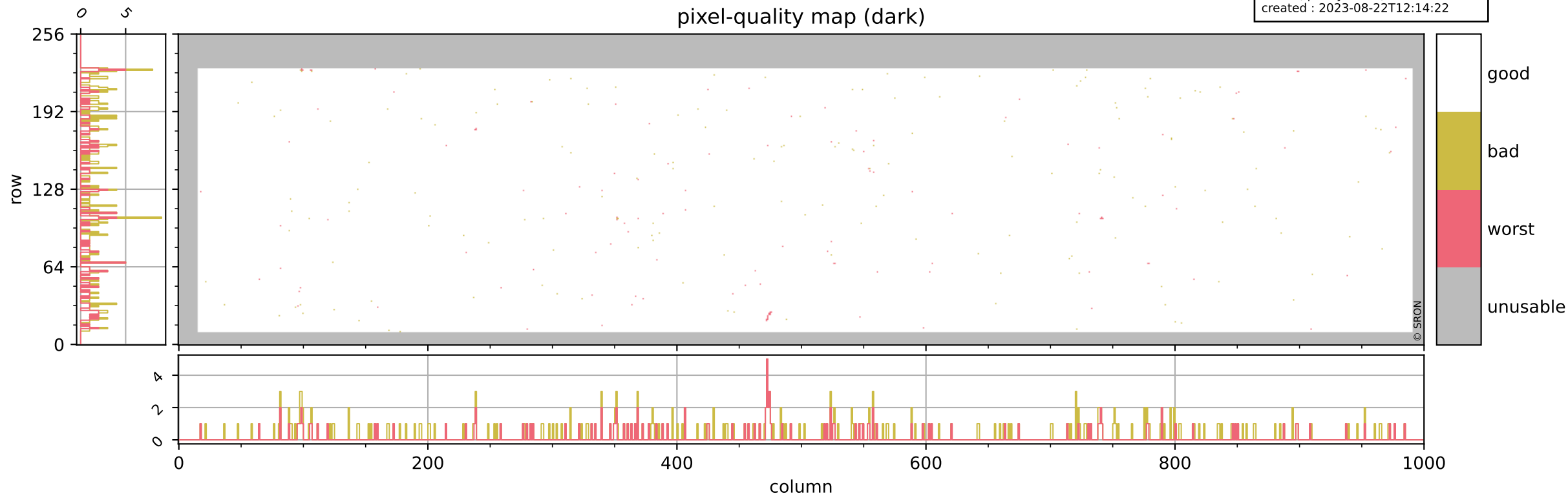
Tropomi SWIR pixel quality (beta nominal)

orbits : 20 in [25912, 25957]
coverage : 2022-10-13 / 2022-10-16
bad (quality < 0.8) : 2519
worst (quality < 0.1) : 281
created : 2023-08-22T12:14:22



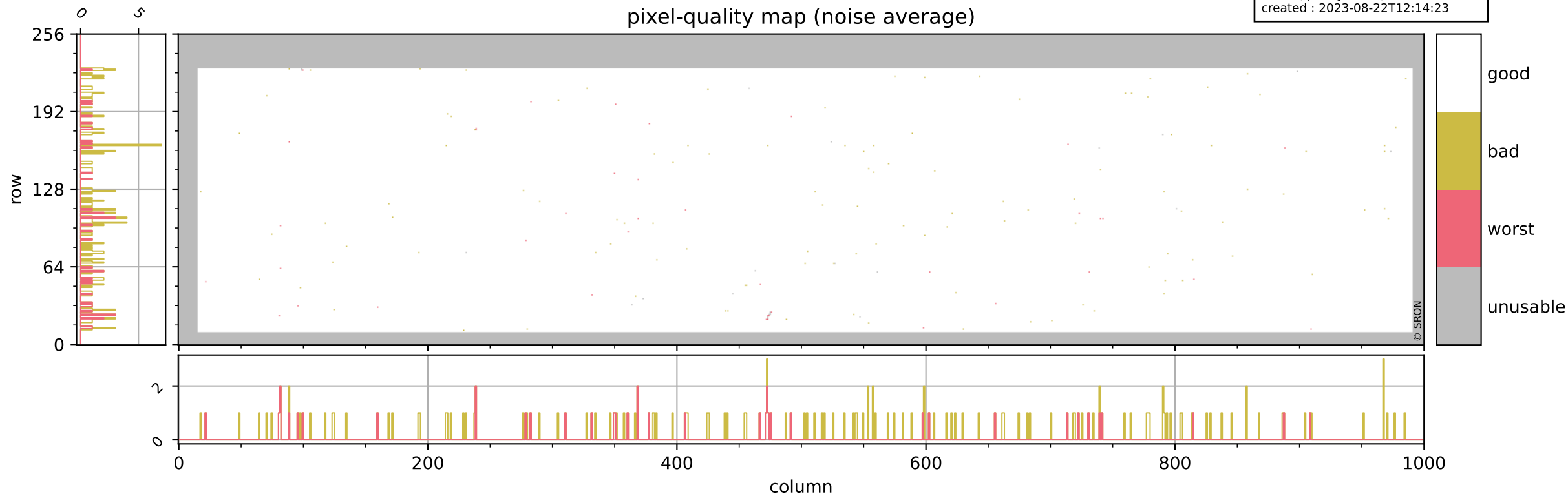
Tropomi SWIR pixel quality (beta nominal)

orbits : 20 in [25912, 25957]
coverage : 2022-10-13 / 2022-10-16
bad (quality < 0.8) : 290
worst (quality < 0.1) : 122
created : 2023-08-22T12:14:22



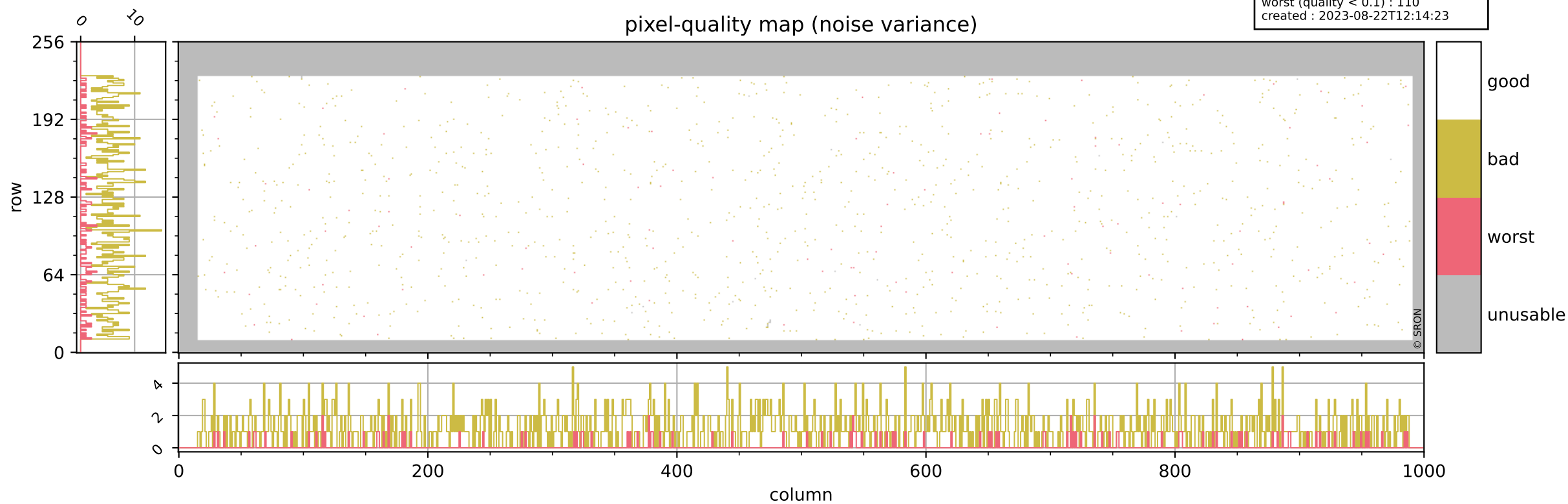
Tropomi SWIR pixel quality (beta nominal)

orbits : 20 in [25912, 25957]
coverage : 2022-10-13 / 2022-10-16
bad (quality < 0.8) : 154
worst (quality < 0.1) : 39
created : 2023-08-22T12:14:23



Tropomi SWIR pixel quality (beta nominal)

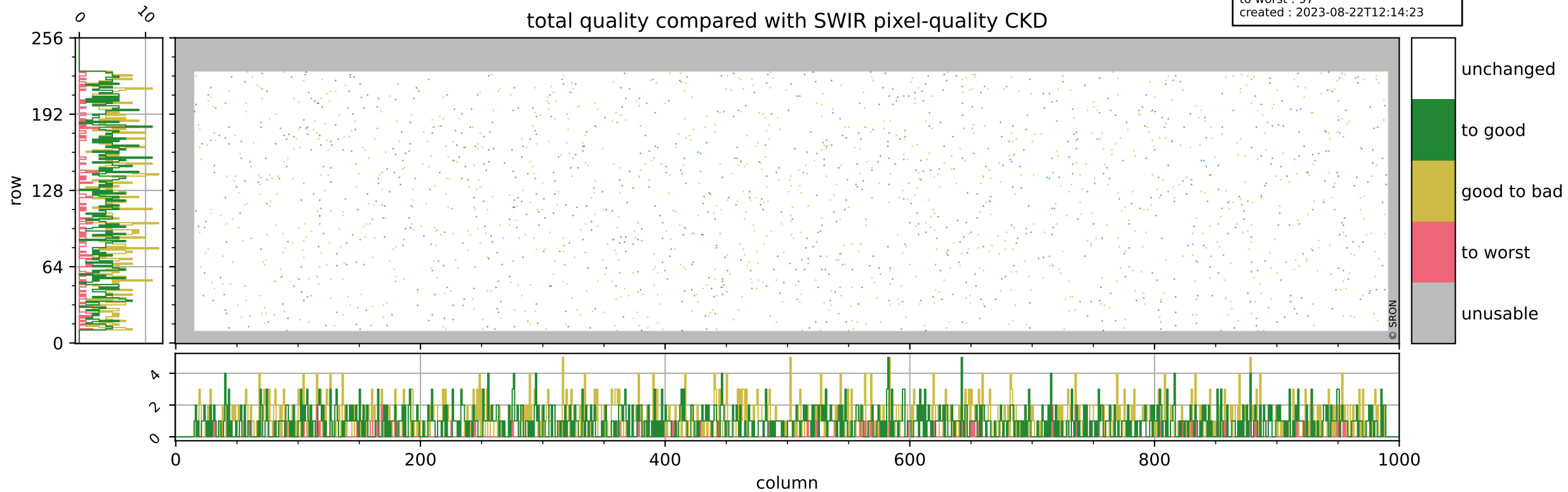
orbits : 20 in [25912, 25957]
coverage : 2022-10-13 / 2022-10-16
bad (quality < 0.8) : 1196
worst (quality < 0.1) : 110
created : 2023-08-22T12:14:23



Tropomi SWIR pixel quality (beta nominal)

orbits : 20 in [25912, 25957]
coverage : 2022-10-13 / 2022-10-16
to good : 864
good to bad : 1012
to worst : 97
created : 2023-08-22T12:14:23

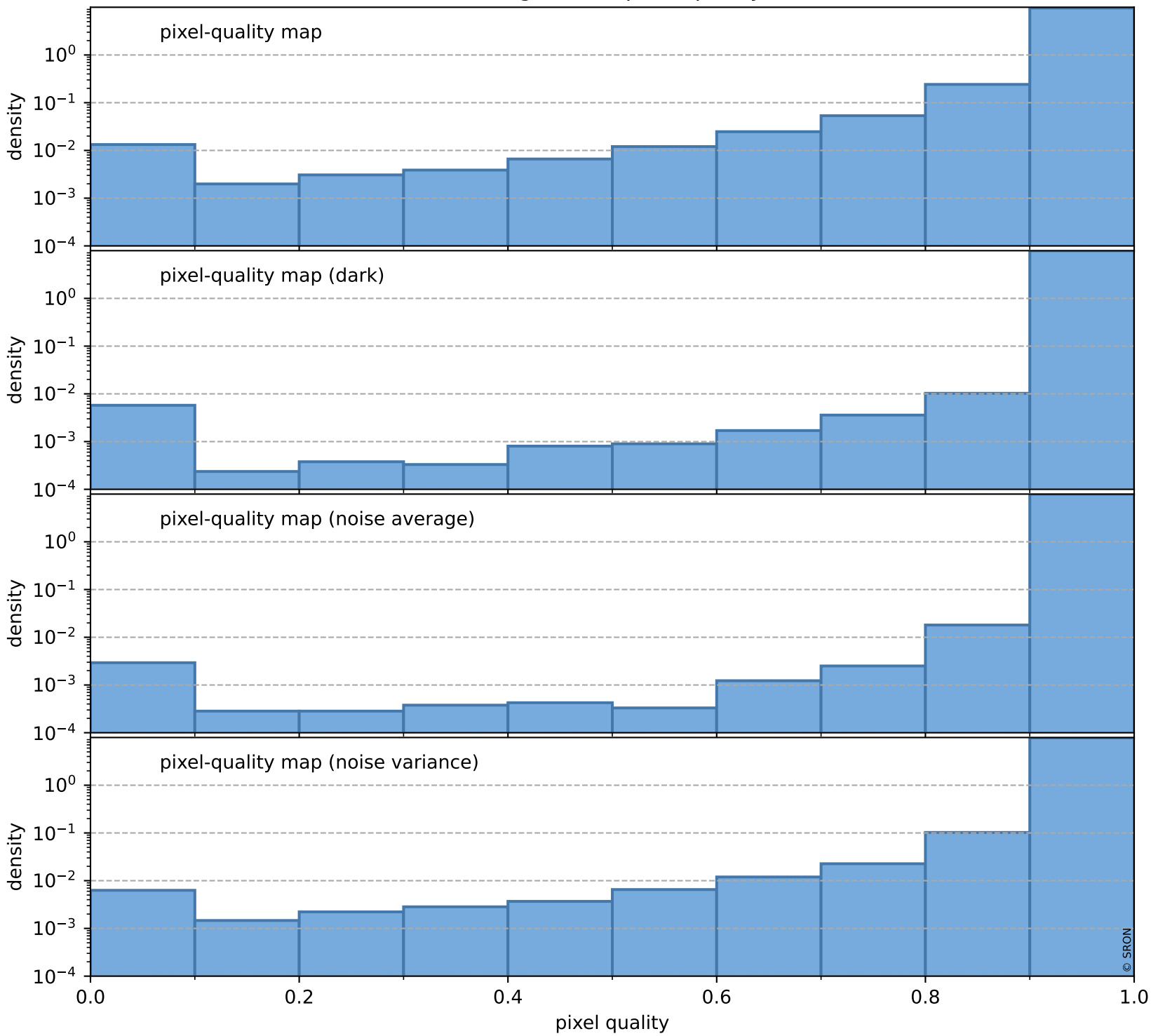
total quality compared with SWIR pixel-quality CKD



Tropomi SWIR pixel quality (beta nominal)

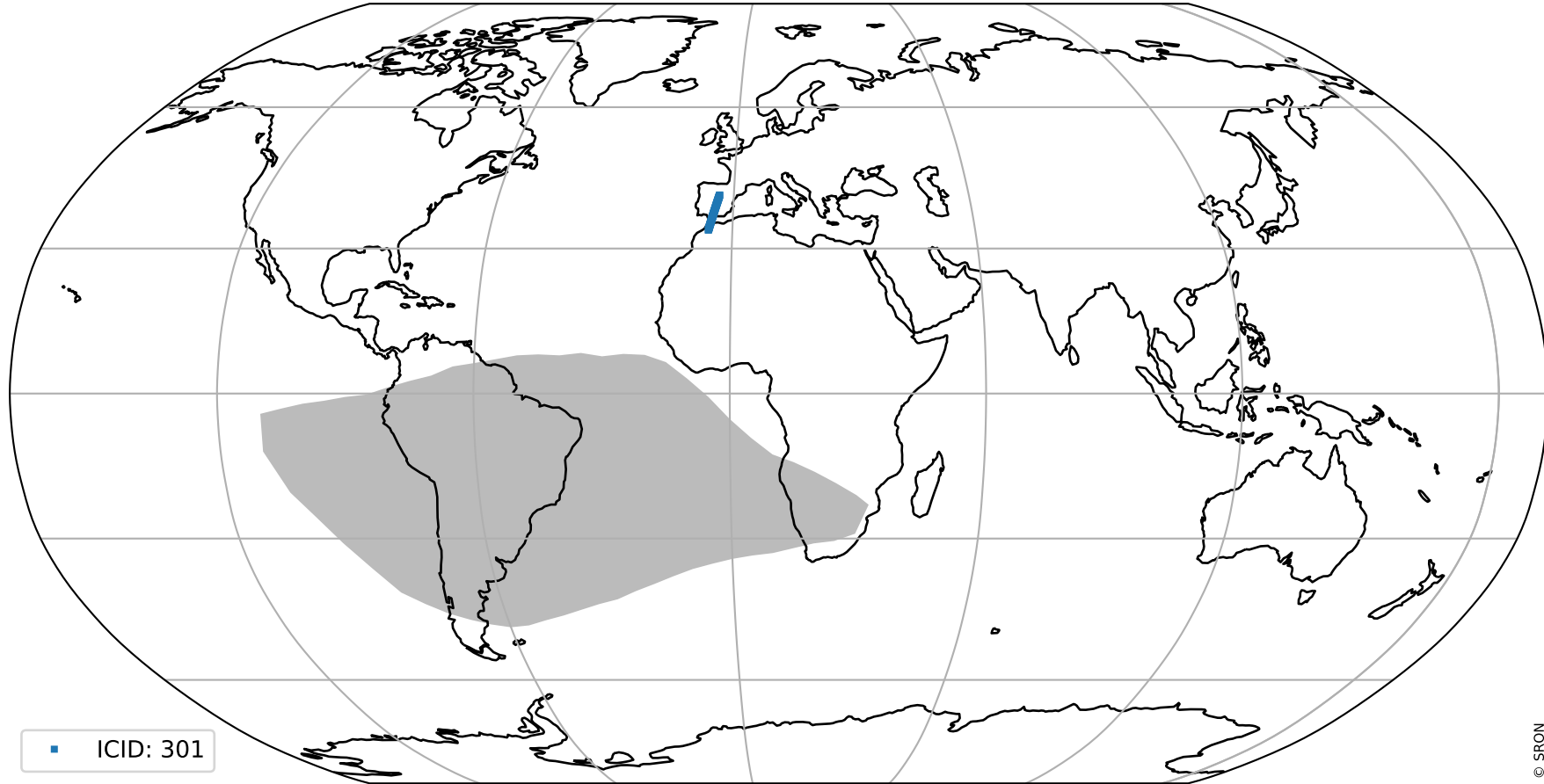
orbits : 20 in [25912, 25957]
coverage : 2022-10-13 / 2022-10-16
created : 2023-08-22T12:14:23

Histograms of pixel-quality



Tropomi SWIR pixel quality (beta nominal) ground-tracks of Sentinel-5P

orbits : 20 in [25912, 25957]
coverage : 2022-10-13 / 2022-10-16
created : 2023-08-22T12:14:24



■ ICID: 301

Tropomi SWIR pixel quality (beta nominal)

orbits : [1867, 25957]
coverage : 2018-02-20 / 2022-10-16
created : 2023-08-22T12:14:24

trend of pixel quality & temperatures

