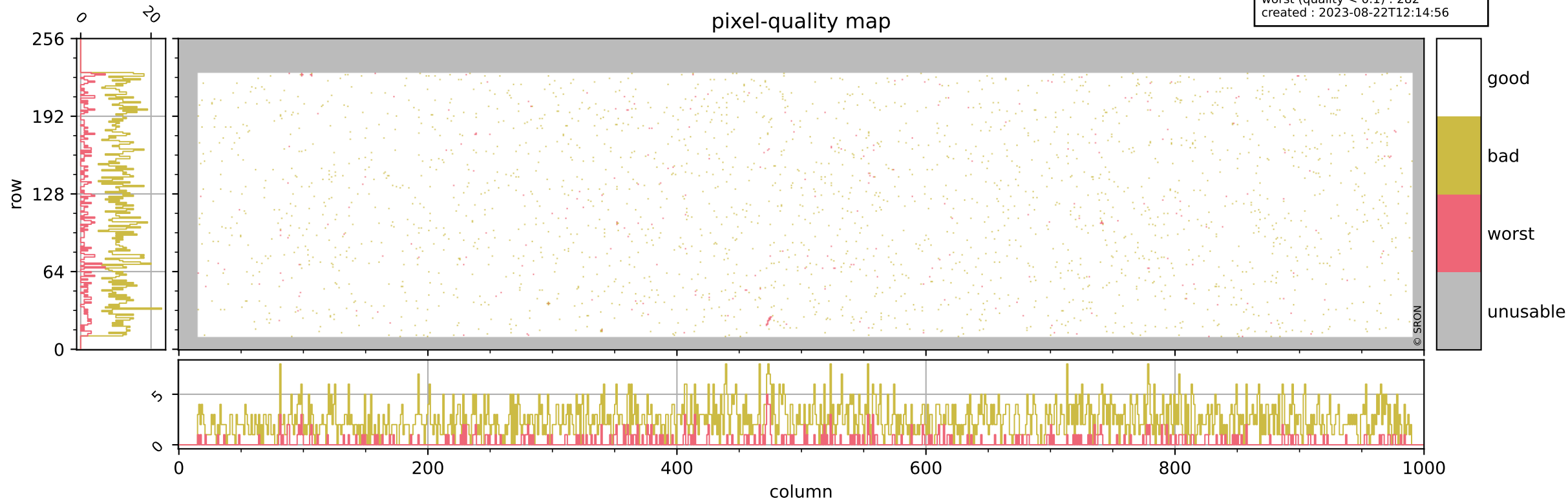


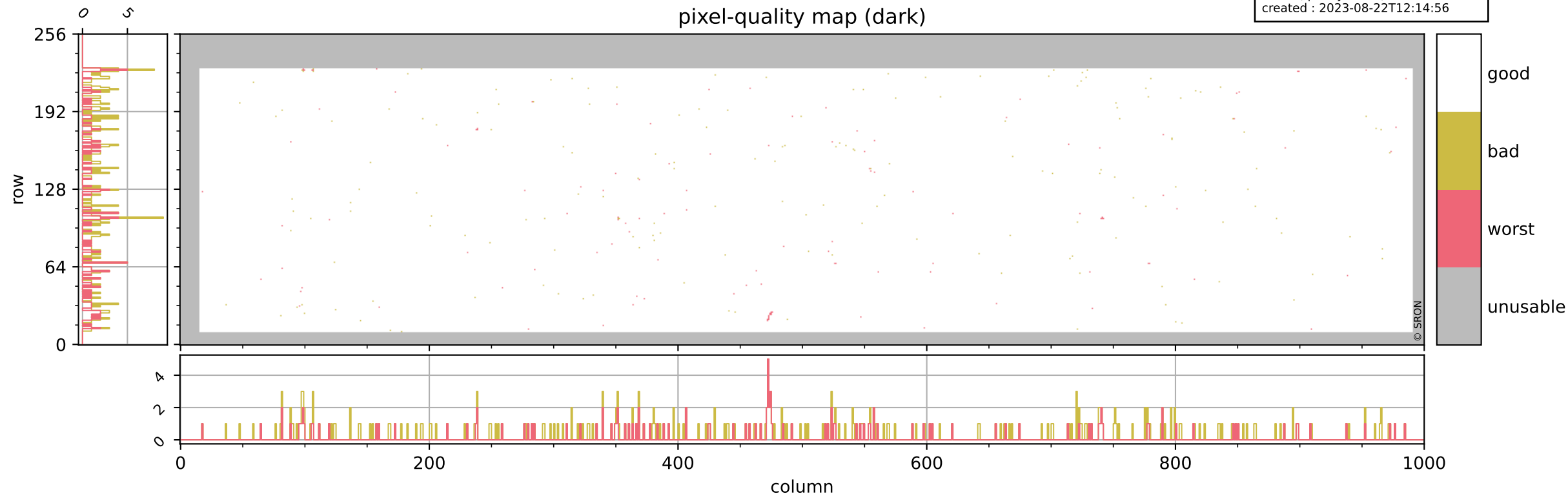
Tropomi SWIR pixel quality (beta nominal)

orbits : 20 in [26452, 26497]
coverage : 2022-11-21 / 2022-11-24
bad (quality < 0.8) : 2471
worst (quality < 0.1) : 282
created : 2023-08-22T12:14:56



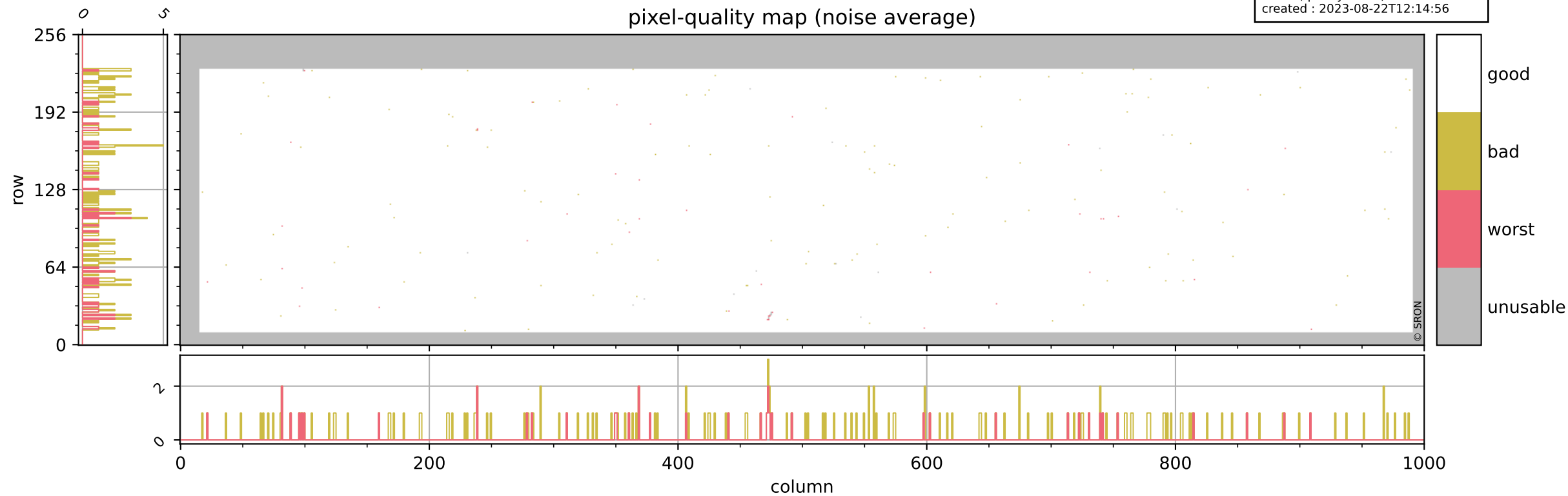
Tropomi SWIR pixel quality (beta nominal)

orbits : 20 in [26452, 26497]
coverage : 2022-11-21 / 2022-11-24
bad (quality < 0.8) : 296
worst (quality < 0.1) : 122
created : 2023-08-22T12:14:56



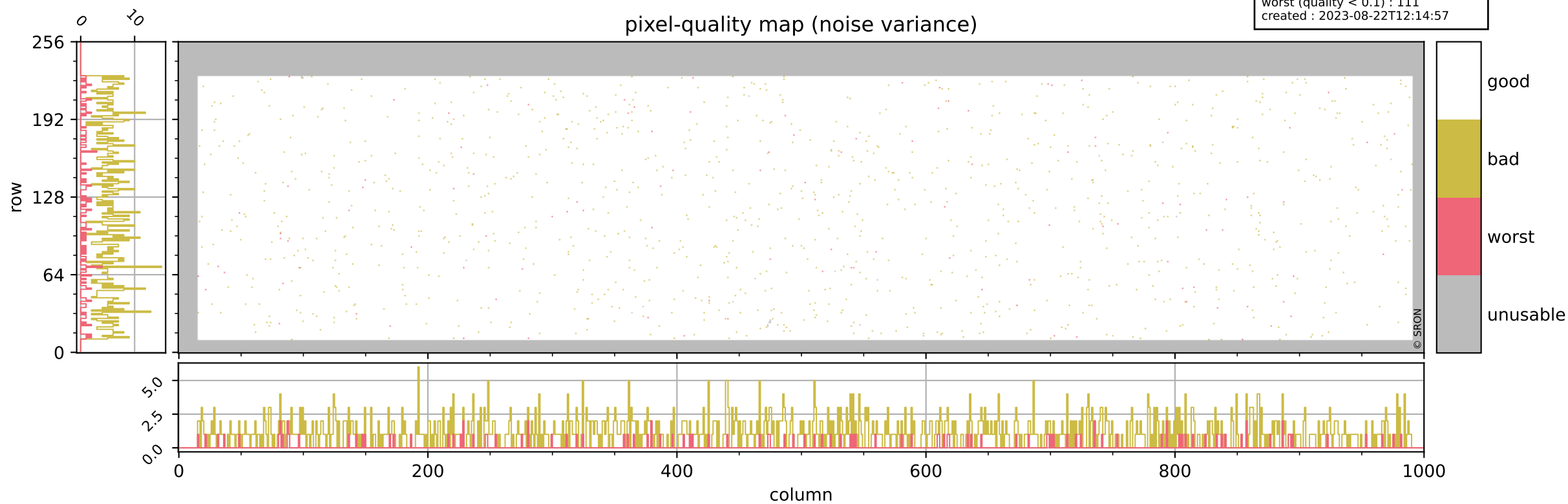
Tropomi SWIR pixel quality (beta nominal)

orbits : 20 in [26452, 26497]
coverage : 2022-11-21 / 2022-11-24
bad (quality < 0.8) : 166
worst (quality < 0.1) : 41
created : 2023-08-22T12:14:56



Tropomi SWIR pixel quality (beta nominal)

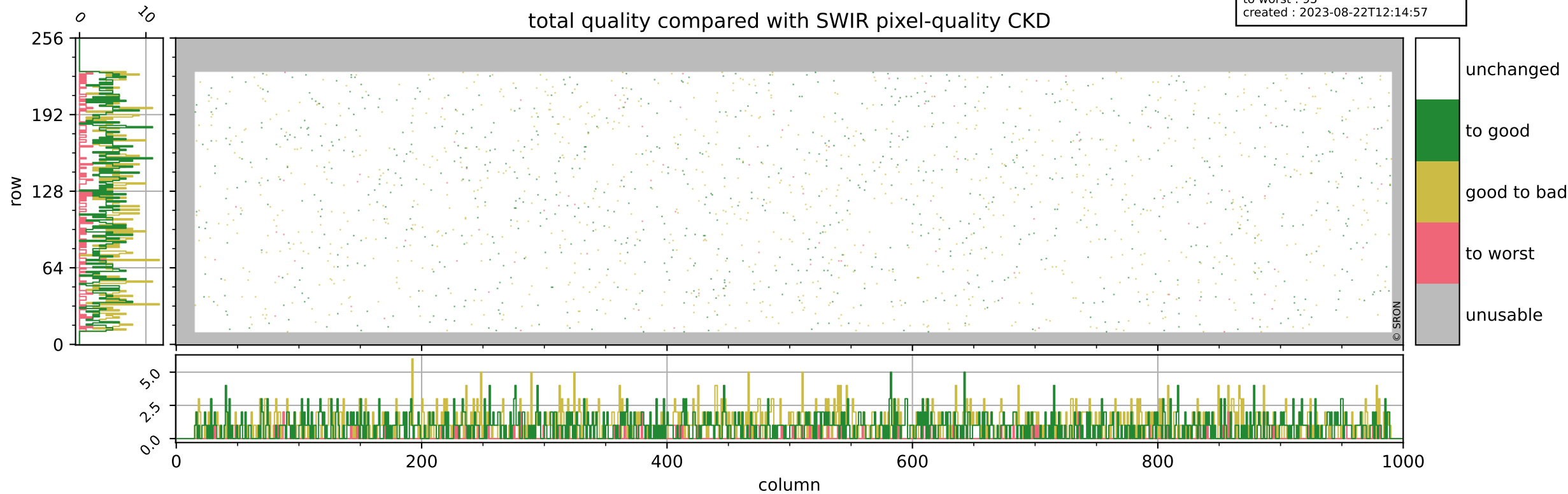
orbits : 20 in [26452, 26497]
coverage : 2022-11-21 / 2022-11-24
bad (quality < 0.8) : 1149
worst (quality < 0.1) : 111
created : 2023-08-22T12:14:57



Tropomi SWIR pixel quality (beta nominal)

orbits : 20 in [26452, 26497]
coverage : 2022-11-21 / 2022-11-24
to good : 860
good to bad : 961
to worst : 95
created : 2023-08-22T12:14:57

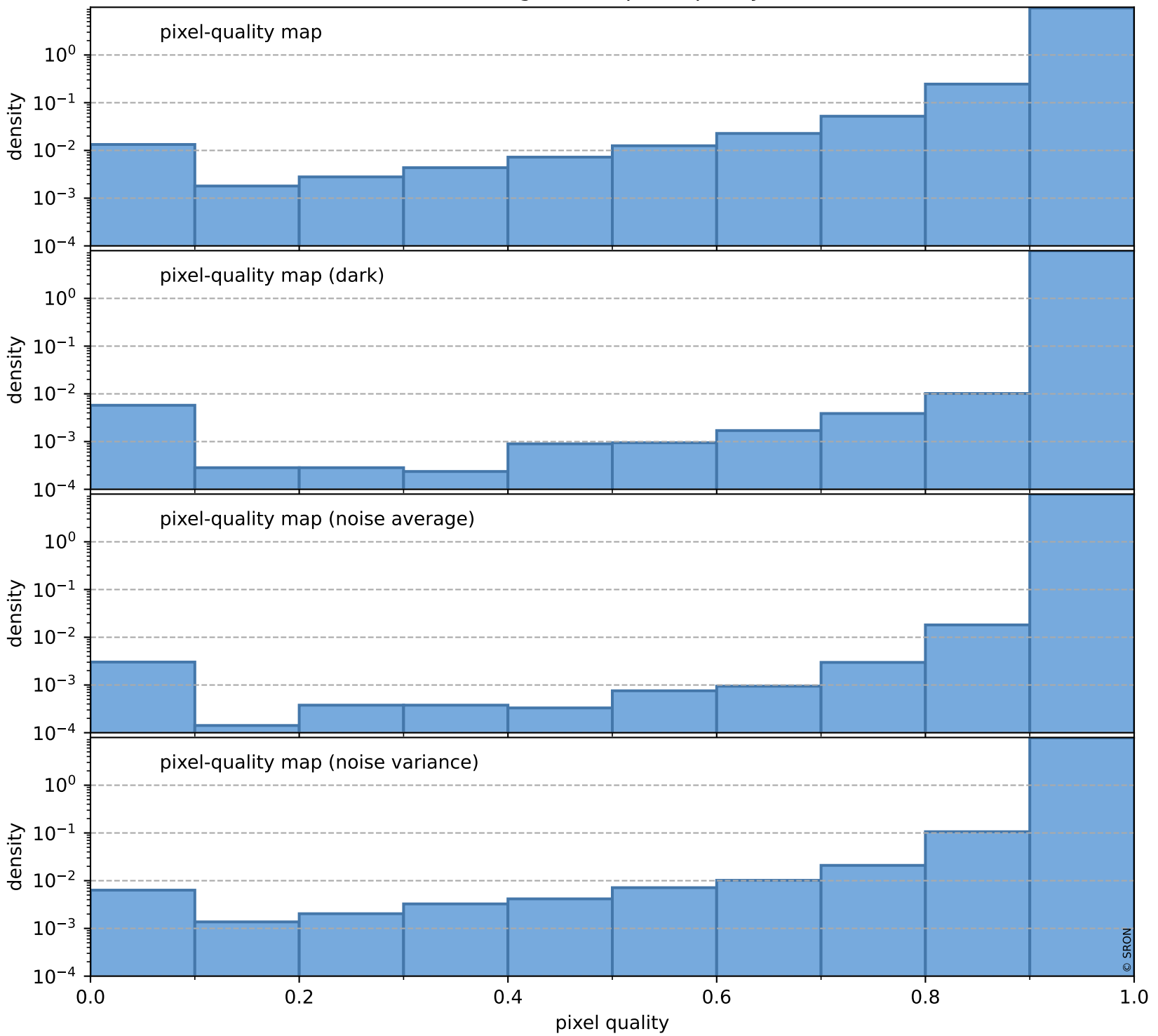
total quality compared with SWIR pixel-quality CKD



Tropomi SWIR pixel quality (beta nominal)

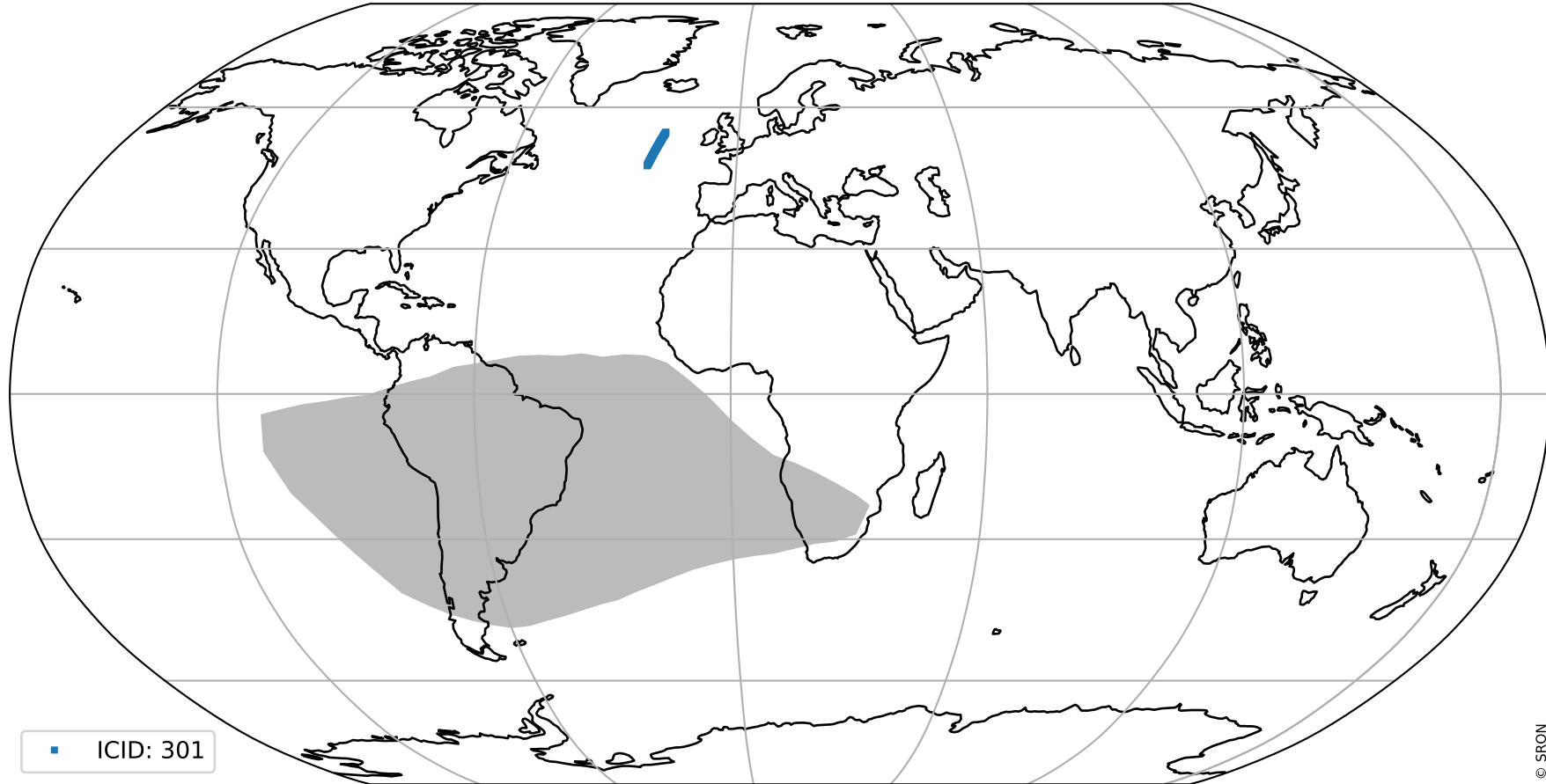
orbits : 20 in [26452, 26497]
coverage : 2022-11-21 / 2022-11-24
created : 2023-08-22T12:14:57

Histograms of pixel-quality



Tropomi SWIR pixel quality (beta nominal) ground-tracks of Sentinel-5P

orbits : 20 in [26452, 26497]
coverage : 2022-11-21 / 2022-11-24
created : 2023-08-22T12:14:58



Tropomi SWIR pixel quality (beta nominal)

orbits : [1867, 26497]
coverage : 2018-02-20 / 2022-11-24
created : 2023-08-22T12:14:58

trend of pixel quality & temperatures

