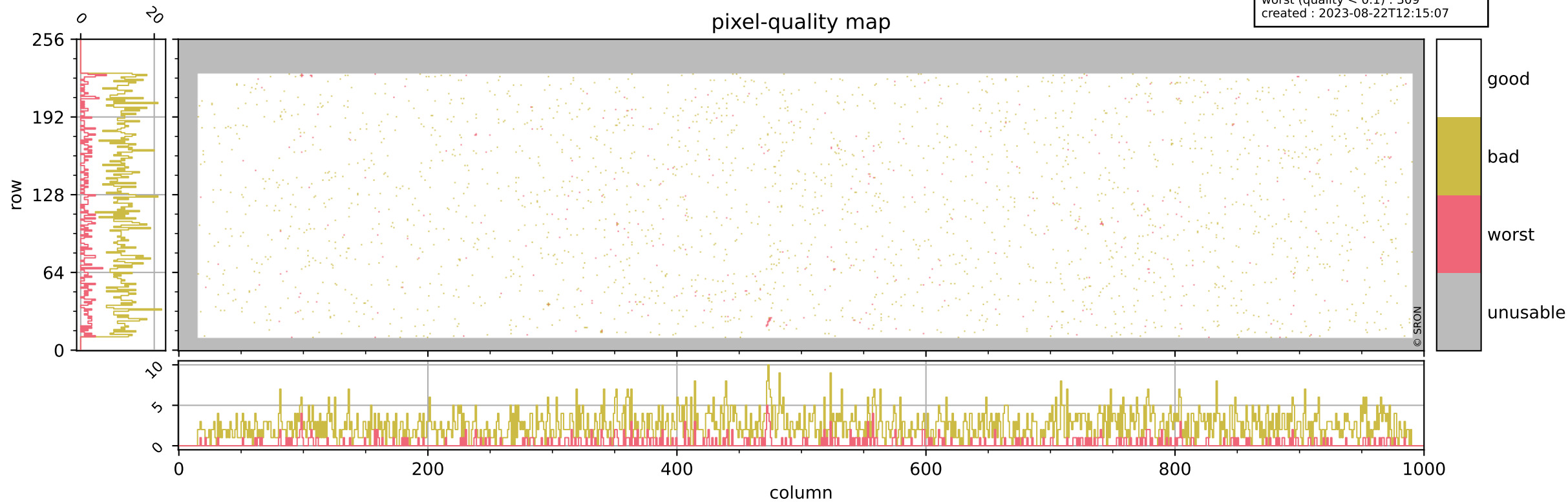


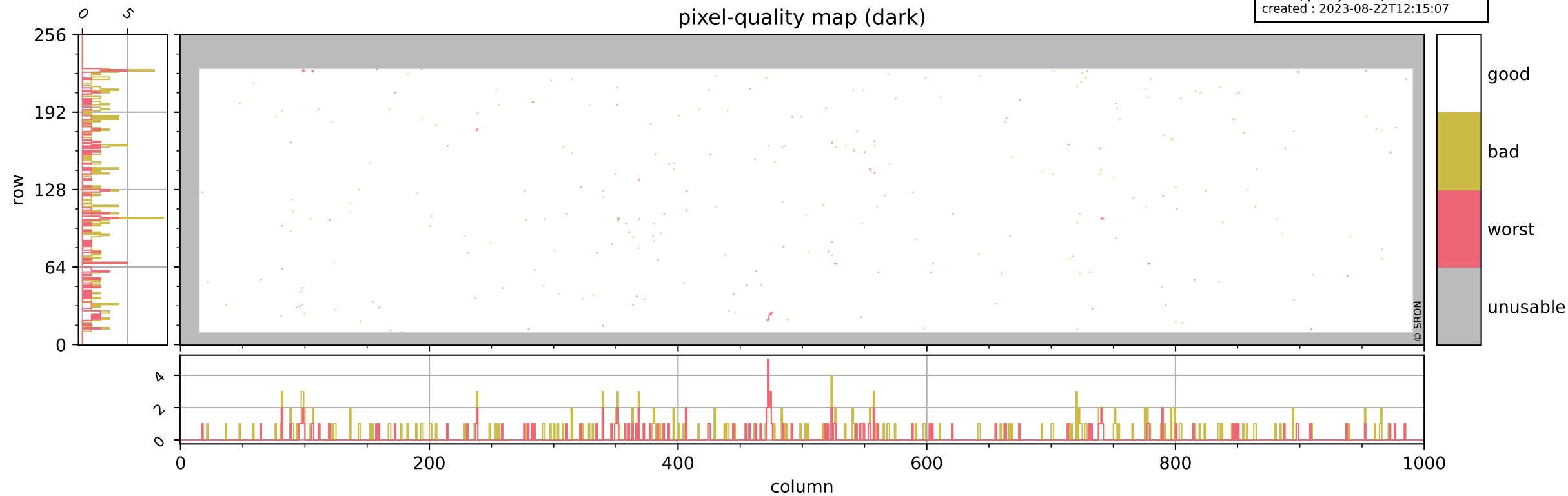
Tropomi SWIR pixel quality (beta nominal)

orbits : 20 in [26632, 26677]
coverage : 2022-12-03 / 2022-12-06
bad (quality < 0.8) : 2522
worst (quality < 0.1) : 309
created : 2023-08-22T12:15:07



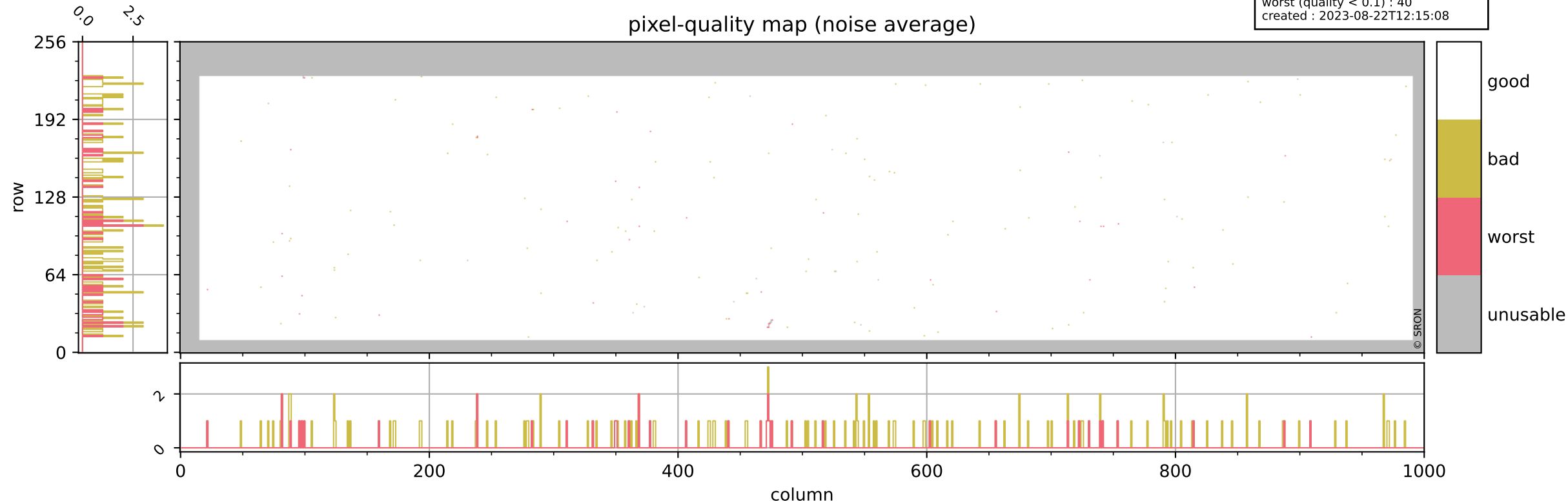
Tropomi SWIR pixel quality (beta nominal)

orbits : 20 in [26632, 26677]
coverage : 2022-12-03 / 2022-12-06
bad (quality < 0.8) : 292
worst (quality < 0.1) : 120
created : 2023-08-22T12:15:07



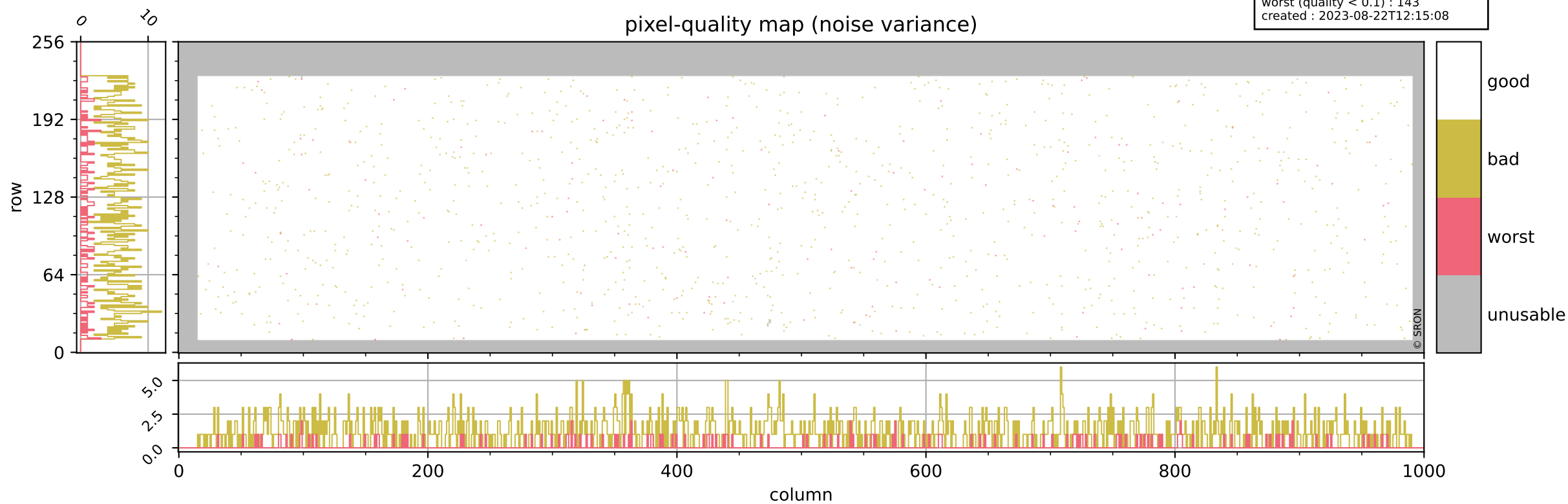
Tropomi SWIR pixel quality (beta nominal)

orbits : 20 in [26632, 26677]
coverage : 2022-12-03 / 2022-12-06
bad (quality < 0.8) : 153
worst (quality < 0.1) : 40
created : 2023-08-22T12:15:08



Tropomi SWIR pixel quality (beta nominal)

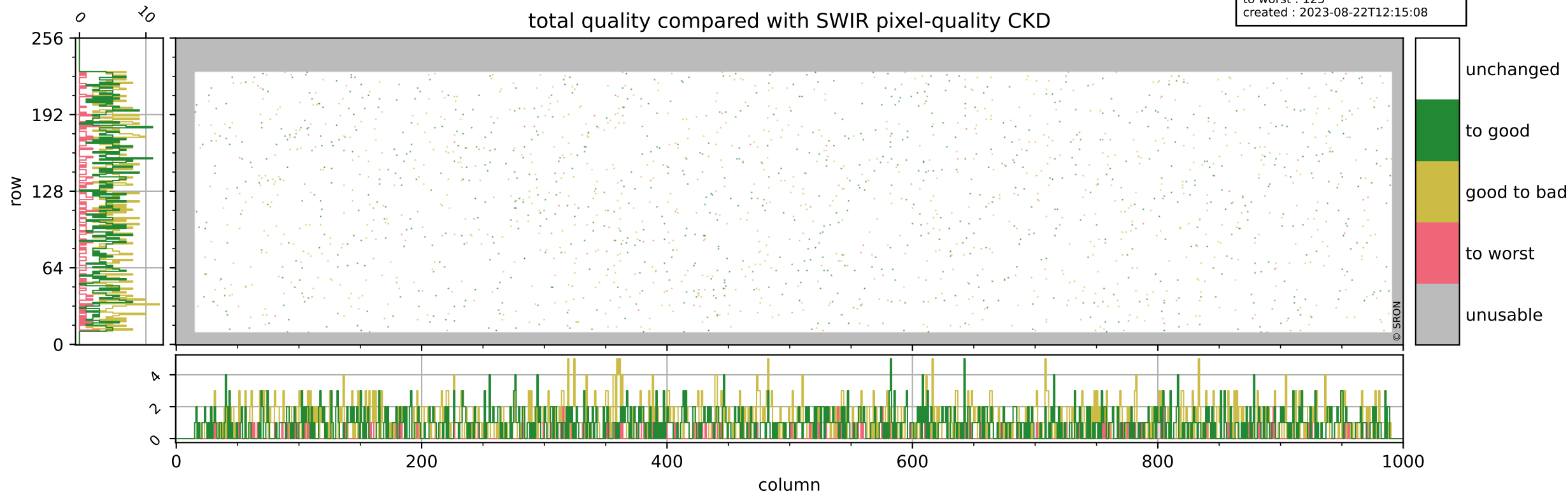
orbits : 20 in [26632, 26677]
coverage : 2022-12-03 / 2022-12-06
bad (quality < 0.8) : 1212
worst (quality < 0.1) : 143
created : 2023-08-22T12:15:08



Tropomi SWIR pixel quality (beta nominal)

orbits : 20 in [26632, 26677]
coverage : 2022-12-03 / 2022-12-06
to good : 860
good to bad : 984
to worst : 125
created : 2023-08-22T12:15:08

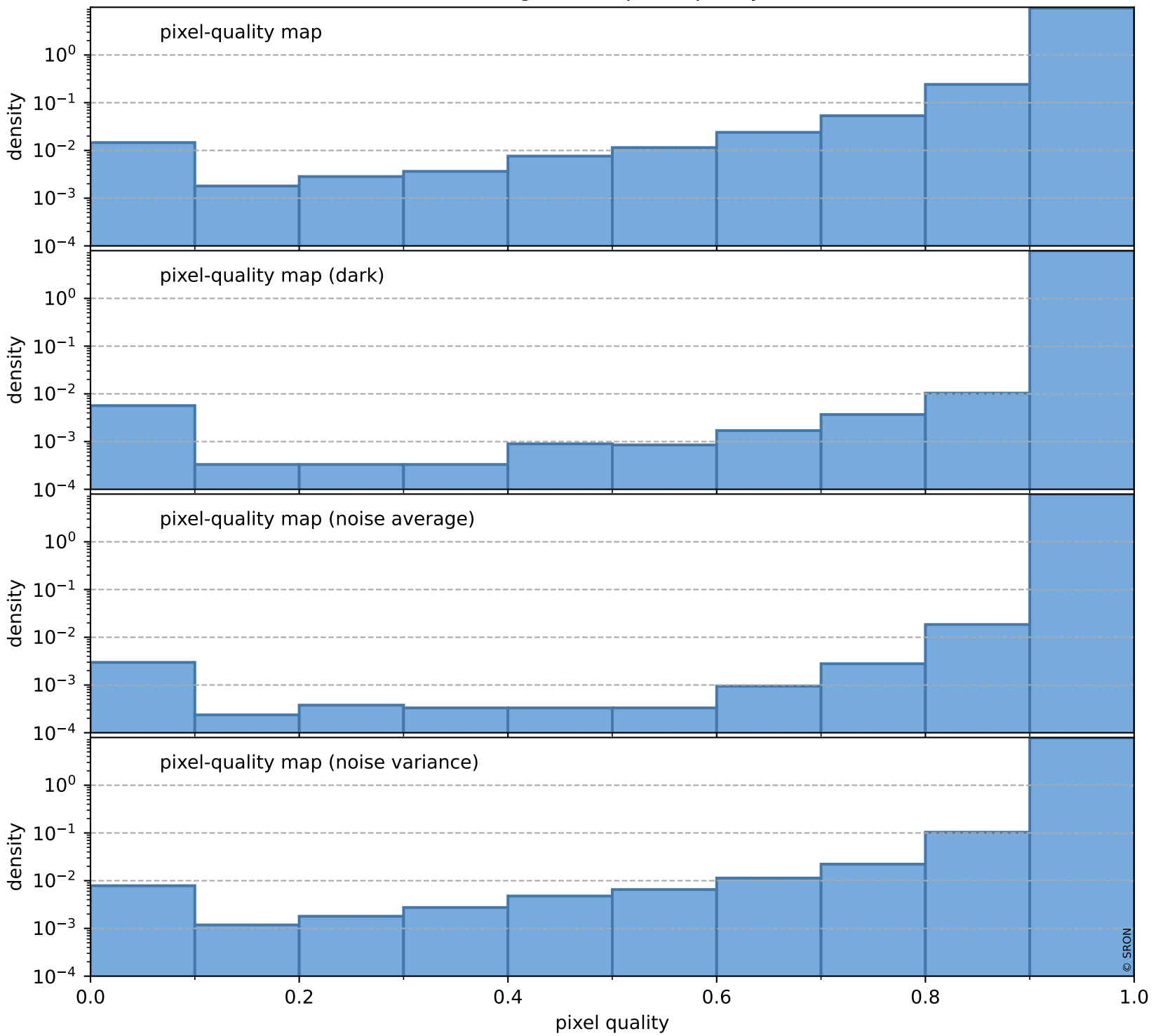
total quality compared with SWIR pixel-quality CKD



Tropomi SWIR pixel quality (beta nominal)

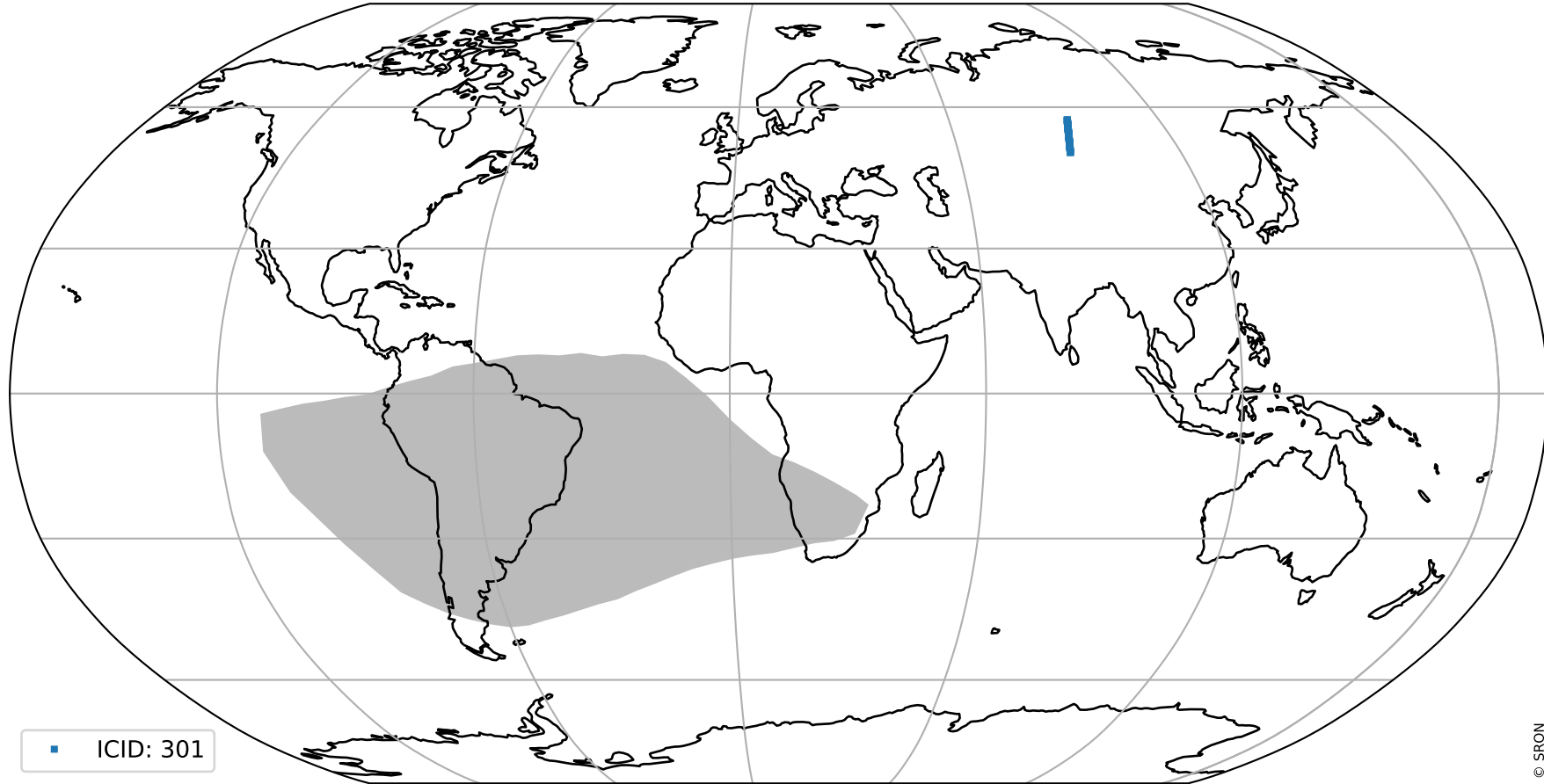
orbits : 20 in [26632, 26677]
coverage : 2022-12-03 / 2022-12-06
created : 2023-08-22T12:15:08

Histograms of pixel-quality



Tropomi SWIR pixel quality (beta nominal) ground-tracks of Sentinel-5P

orbits : 20 in [26632, 26677]
coverage : 2022-12-03 / 2022-12-06
created : 2023-08-22T12:15:09



Tropomi SWIR pixel quality (beta nominal)

orbits : [1867, 26677]
coverage : 2018-02-20 / 2022-12-06
created : 2023-08-22T12:15:09

trend of pixel quality & temperatures

