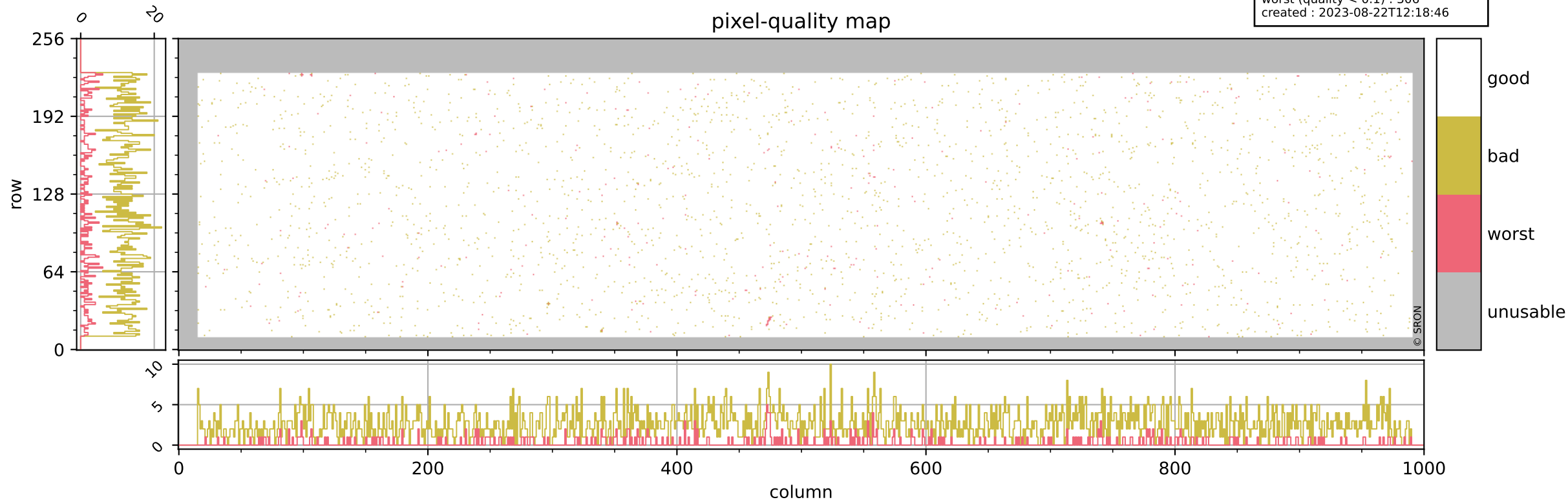


# Tropomi SWIR pixel quality (beta nominal)

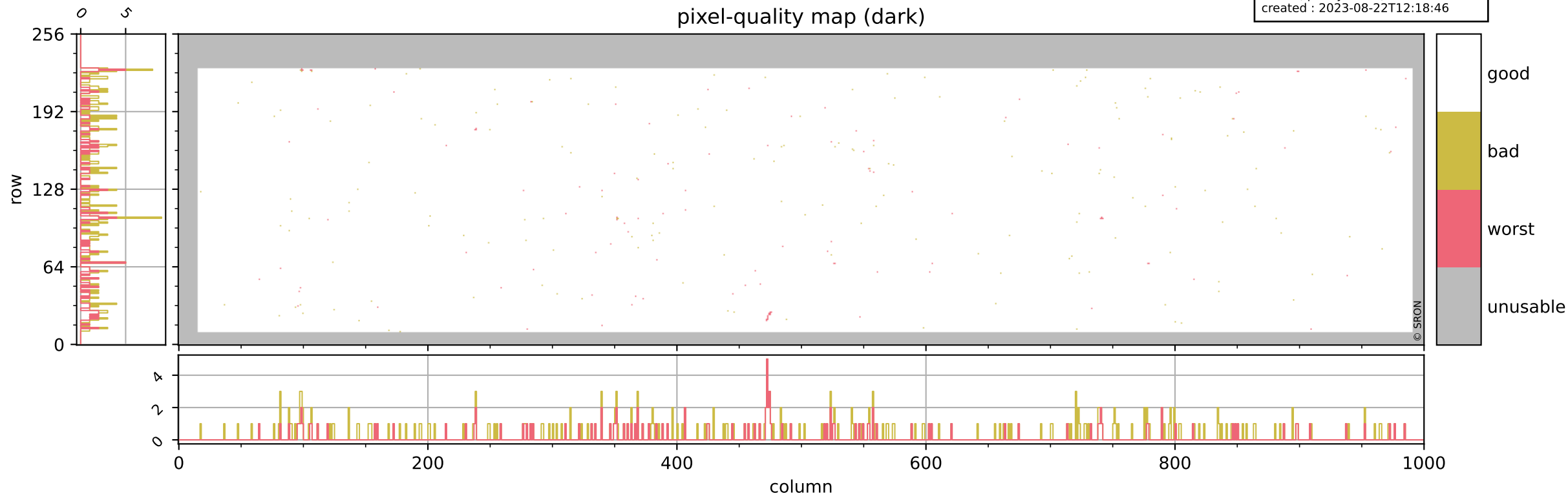
orbits : 16 in [30097, 30142]  
coverage : 2023-08-04 / 2023-08-08  
bad (quality < 0.8) : 2650  
worst (quality < 0.1) : 306  
created : 2023-08-22T12:18:46

## pixel-quality map



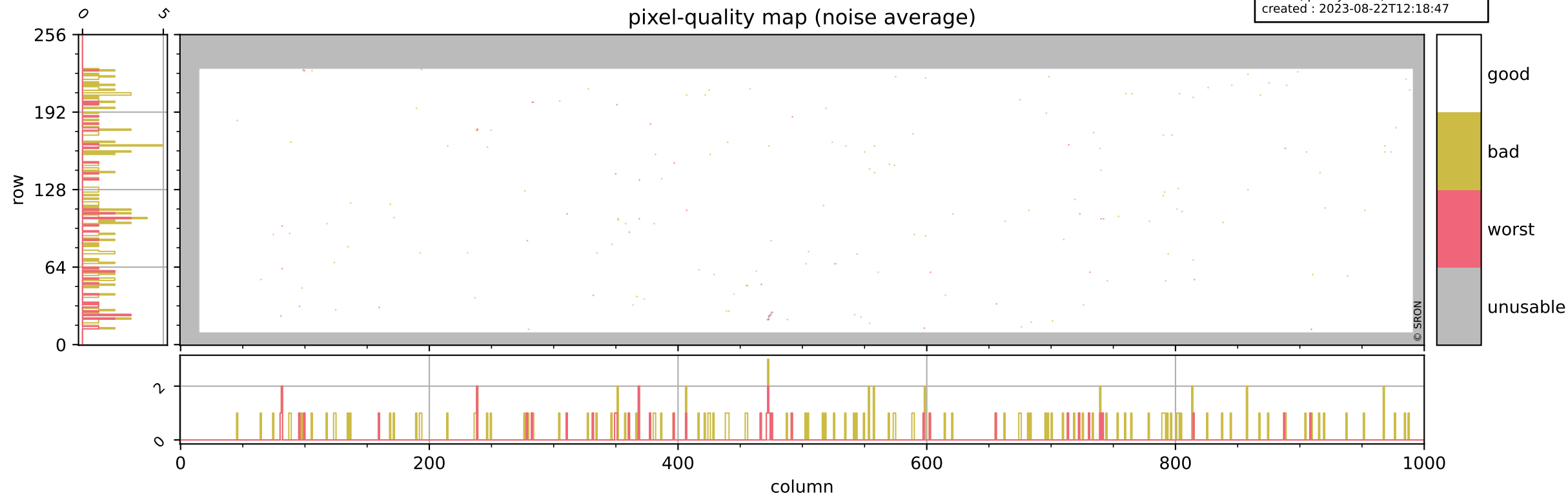
# Tropomi SWIR pixel quality (beta nominal)

orbits : 16 in [30097, 30142]  
coverage : 2023-08-04 / 2023-08-08  
bad (quality < 0.8) : 291  
worst (quality < 0.1) : 117  
created : 2023-08-22T12:18:46



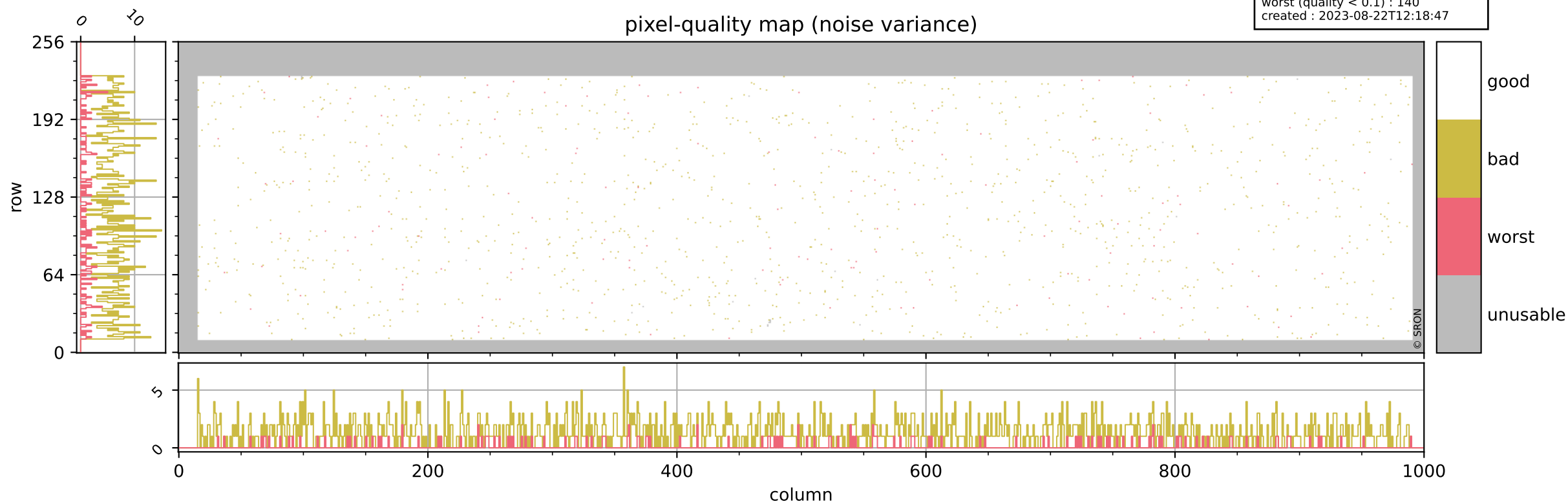
# Tropomi SWIR pixel quality (beta nominal)

orbits : 16 in [30097, 30142]  
coverage : 2023-08-04 / 2023-08-08  
bad (quality < 0.8) : 157  
worst (quality < 0.1) : 38  
created : 2023-08-22T12:18:47



# Tropomi SWIR pixel quality (beta nominal)

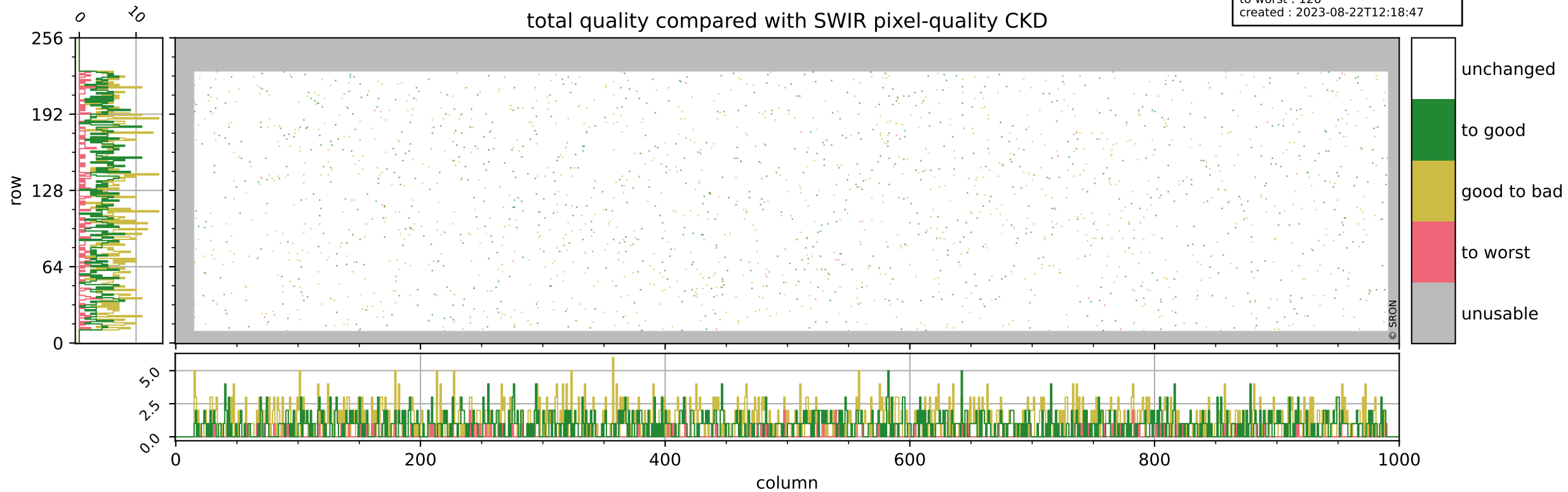
orbits : 16 in [30097, 30142]  
coverage : 2023-08-04 / 2023-08-08  
bad (quality < 0.8) : 1335  
worst (quality < 0.1) : 140  
created : 2023-08-22T12:18:47



# Tropomi SWIR pixel quality (beta nominal)

orbits : 16 in [30097, 30142]  
coverage : 2023-08-04 / 2023-08-08  
to good : 855  
good to bad : 1108  
to worst : 126  
created : 2023-08-22T12:18:47

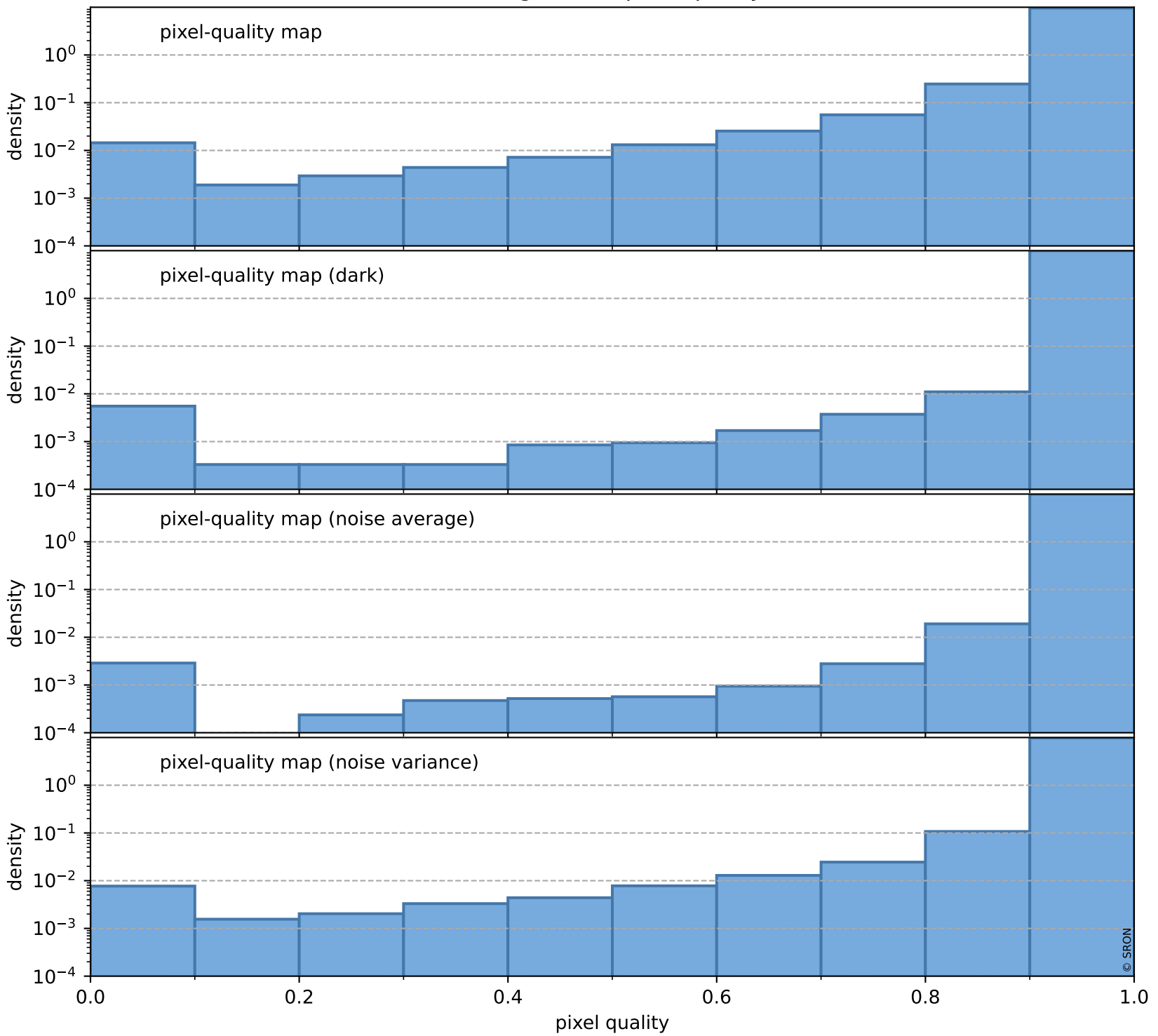
## total quality compared with SWIR pixel-quality CKD



# Tropomi SWIR pixel quality (beta nominal)

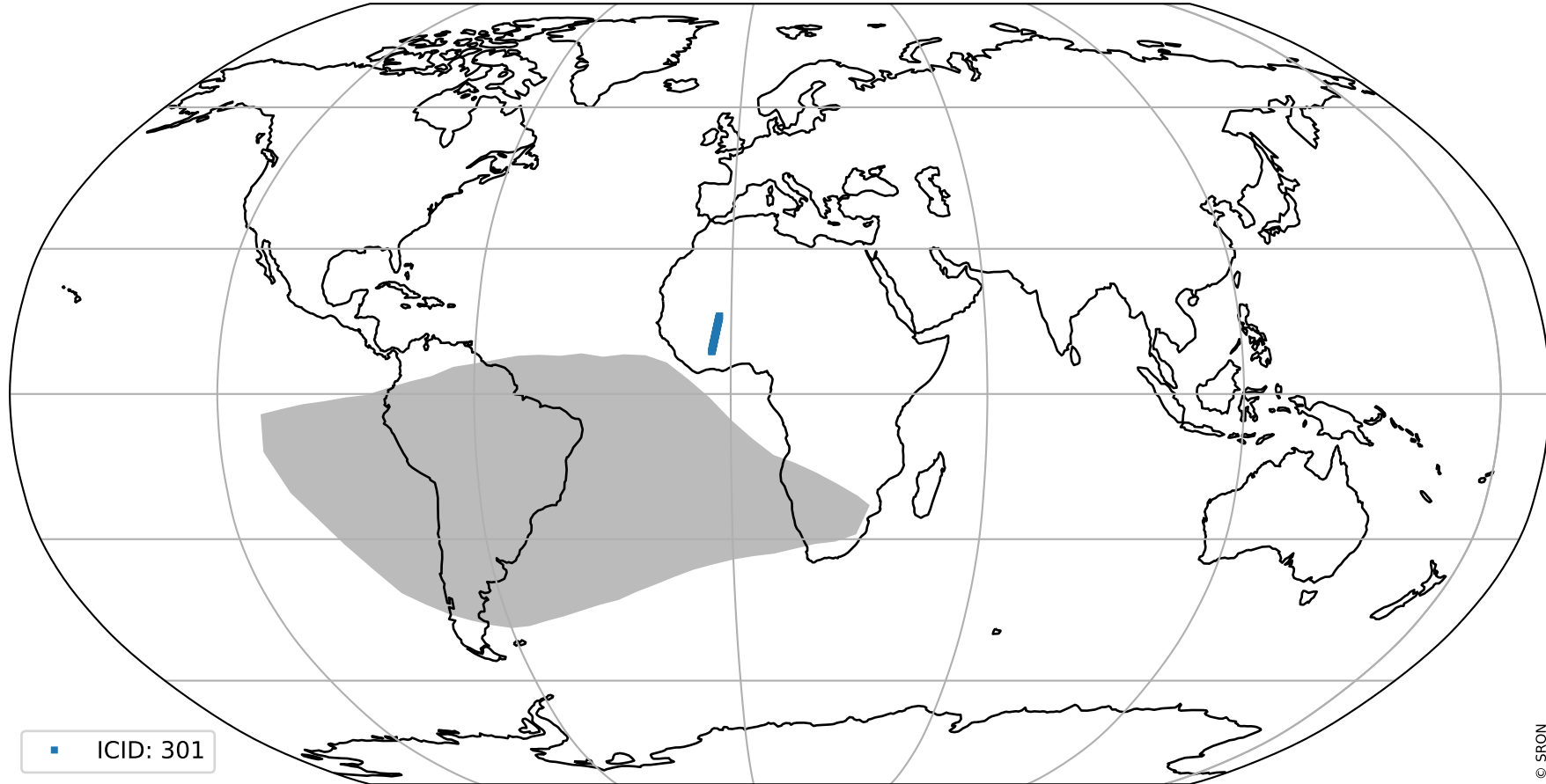
orbits : 16 in [30097, 30142]  
coverage : 2023-08-04 / 2023-08-08  
created : 2023-08-22T12:18:47

## Histograms of pixel-quality



# Tropomi SWIR pixel quality (beta nominal) ground-tracks of Sentinel-5P

orbits : 16 in [30097, 30142]  
coverage : 2023-08-04 / 2023-08-08  
created : 2023-08-22T12:18:48



# Tropomi SWIR pixel quality (beta nominal)

orbits : [1867, 30142]  
coverage : 2018-02-20 / 2023-08-08  
created : 2023-08-22T12:18:48

## trend of pixel quality & temperatures

