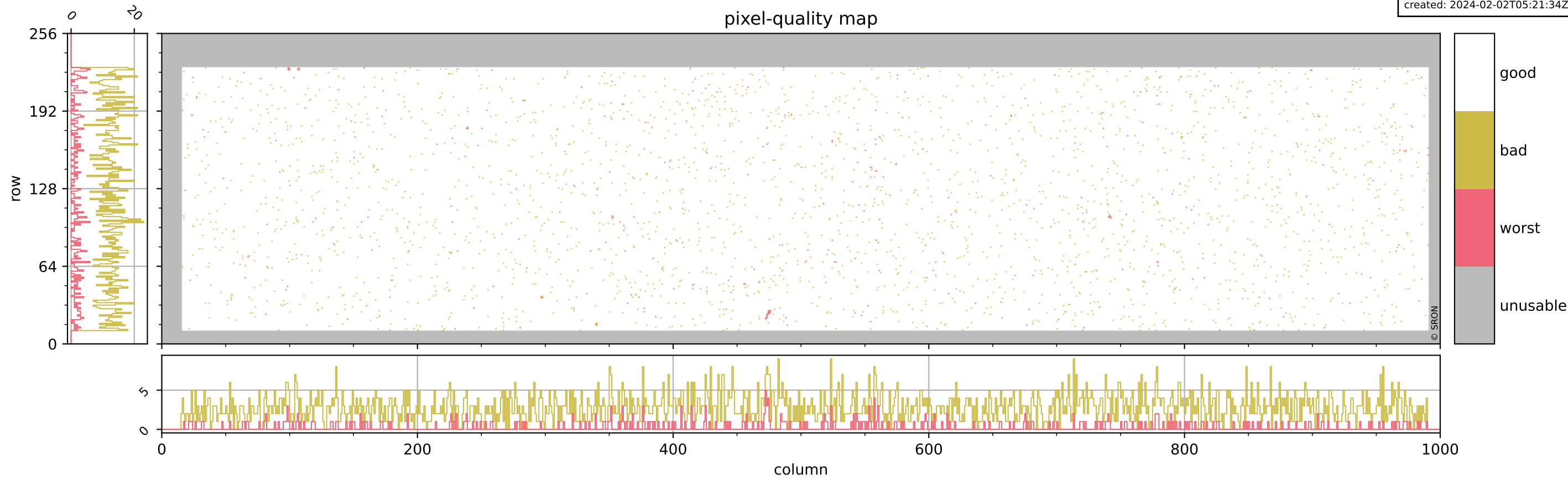


Tropomi SWIR pixel quality (beta nominal)

orbits: 16 in [32617, 32662]
coverage: 2024-01-29 / 2024-02-01
bad (quality < 0.8): 2785
worst (quality < 0.1): 320
created: 2024-02-02T05:21:34Z

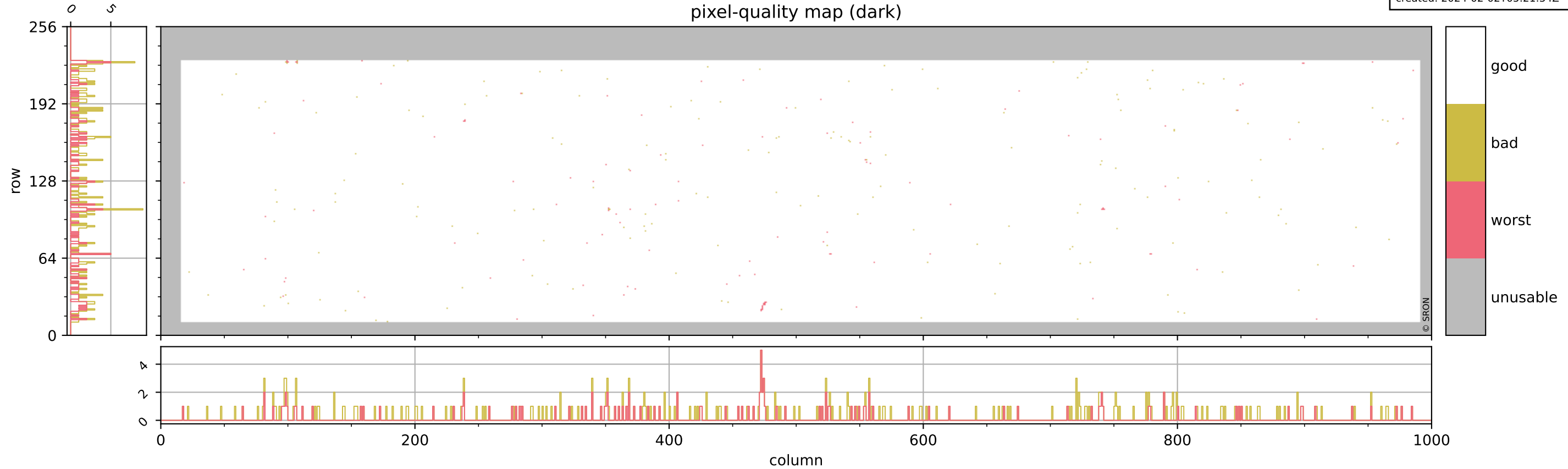
pixel-quality map



Tropomi SWIR pixel quality (beta nominal)

orbits: 16 in [32617, 32662]
coverage: 2024-01-29 / 2024-02-01
bad (quality < 0.8): 291
worst (quality < 0.1): 118
created: 2024-02-02T05:21:34Z

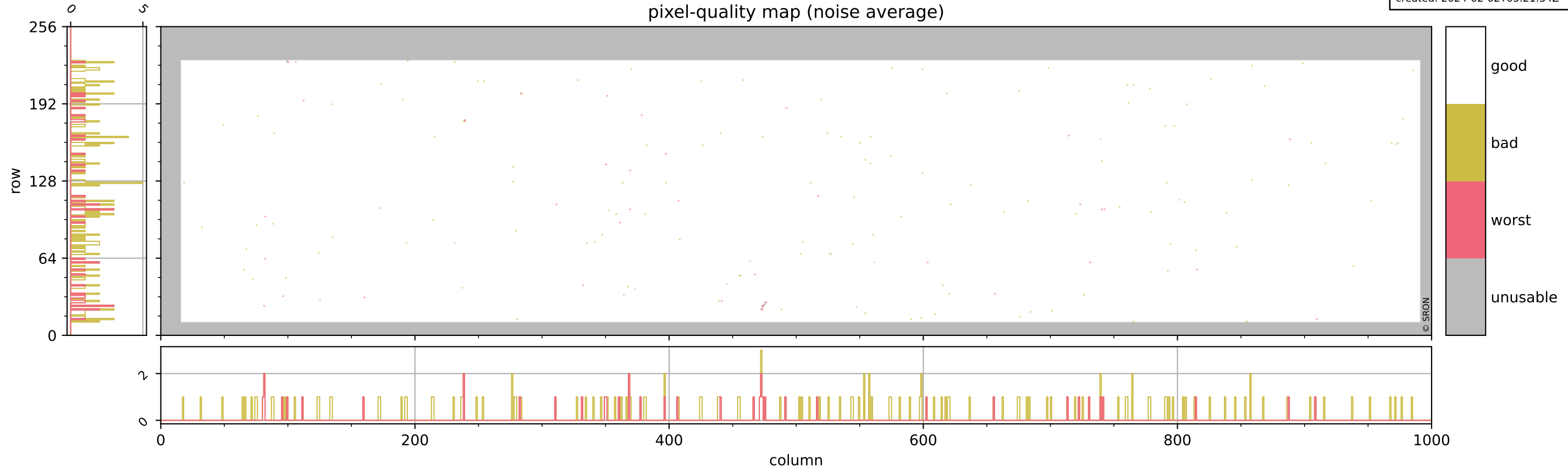
pixel-quality map (dark)



Tropomi SWIR pixel quality (beta nominal)

orbits: 16 in [32617, 32662]
coverage: 2024-01-29 / 2024-02-01
bad (quality < 0.8): 160
worst (quality < 0.1): 39
created: 2024-02-02T05:21:34Z

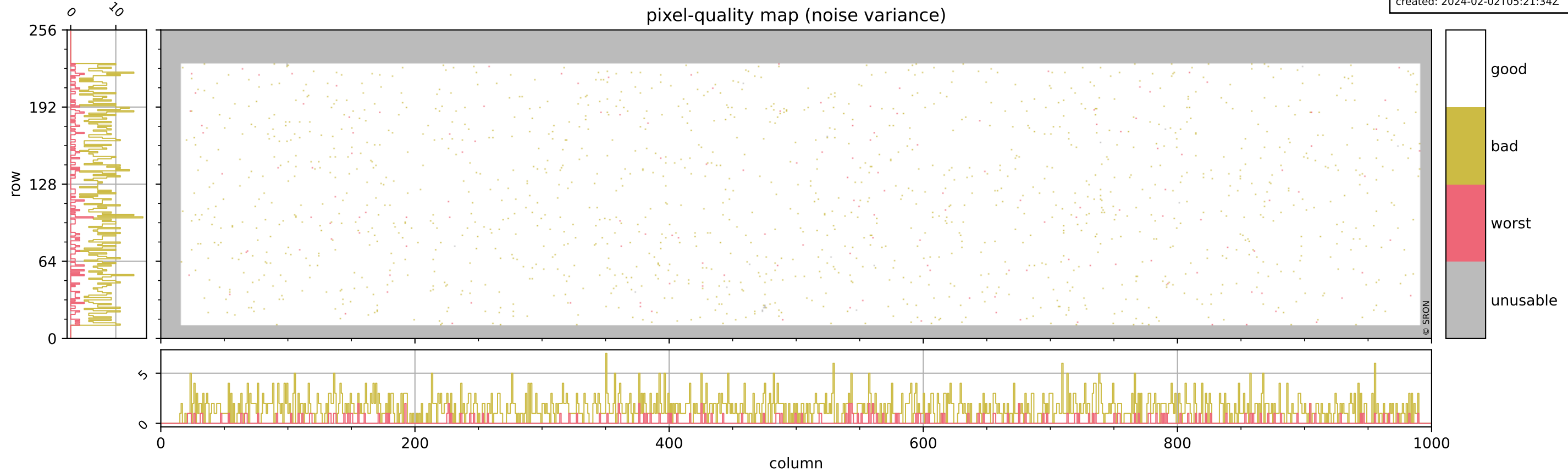
pixel-quality map (noise average)



Tropomi SWIR pixel quality (beta nominal)

orbits: 16 in [32617, 32662]
coverage: 2024-01-29 / 2024-02-01
bad (quality < 0.8): 1472
worst (quality < 0.1): 156
created: 2024-02-02T05:21:34Z

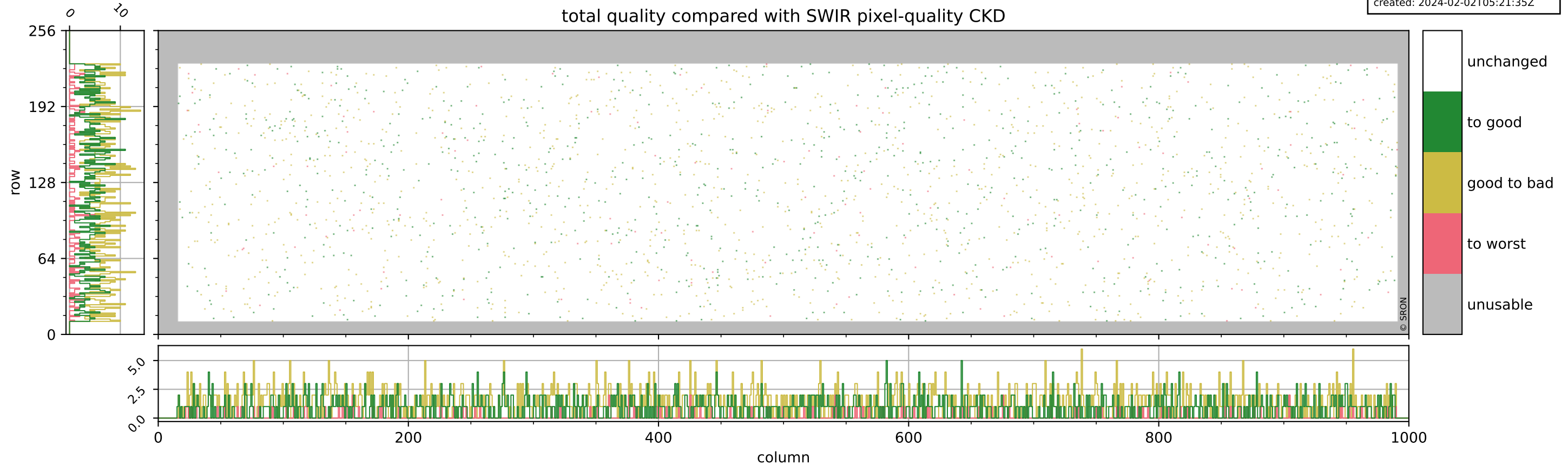
pixel-quality map (noise variance)



Tropomi SWIR pixel quality (beta nominal)

orbits: 16 in [32617, 32662]
coverage: 2024-01-29 / 2024-02-01
to good: 864
good to bad: 1241
to worst: 136
created: 2024-02-02T05:21:35Z

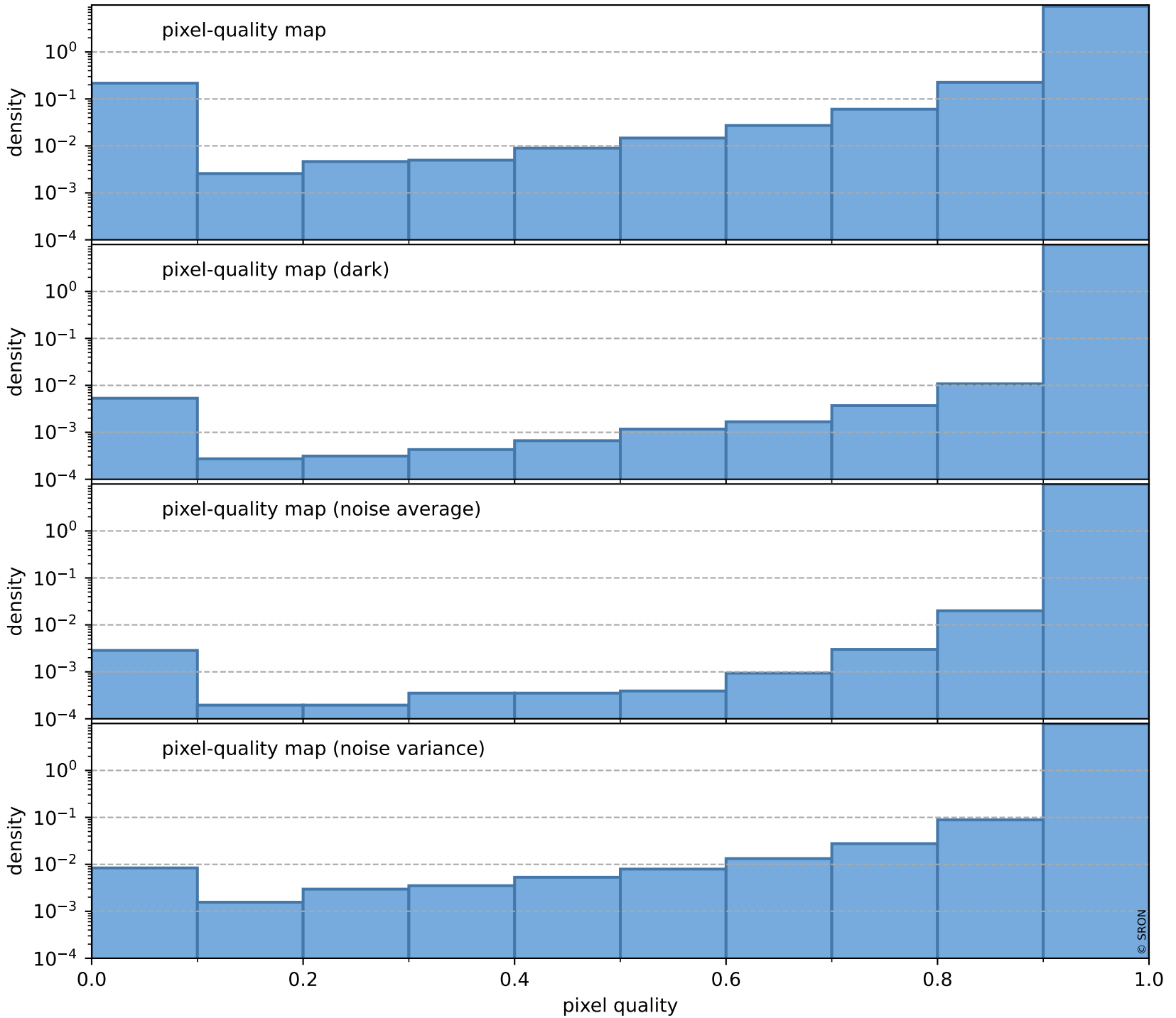
total quality compared with SWIR pixel-quality CKD



Tropomi SWIR pixel quality (beta nominal)

orbits: 16 in [32617, 32662]
coverage: 2024-01-29 / 2024-02-01
created: 2024-02-02T05:21:35Z

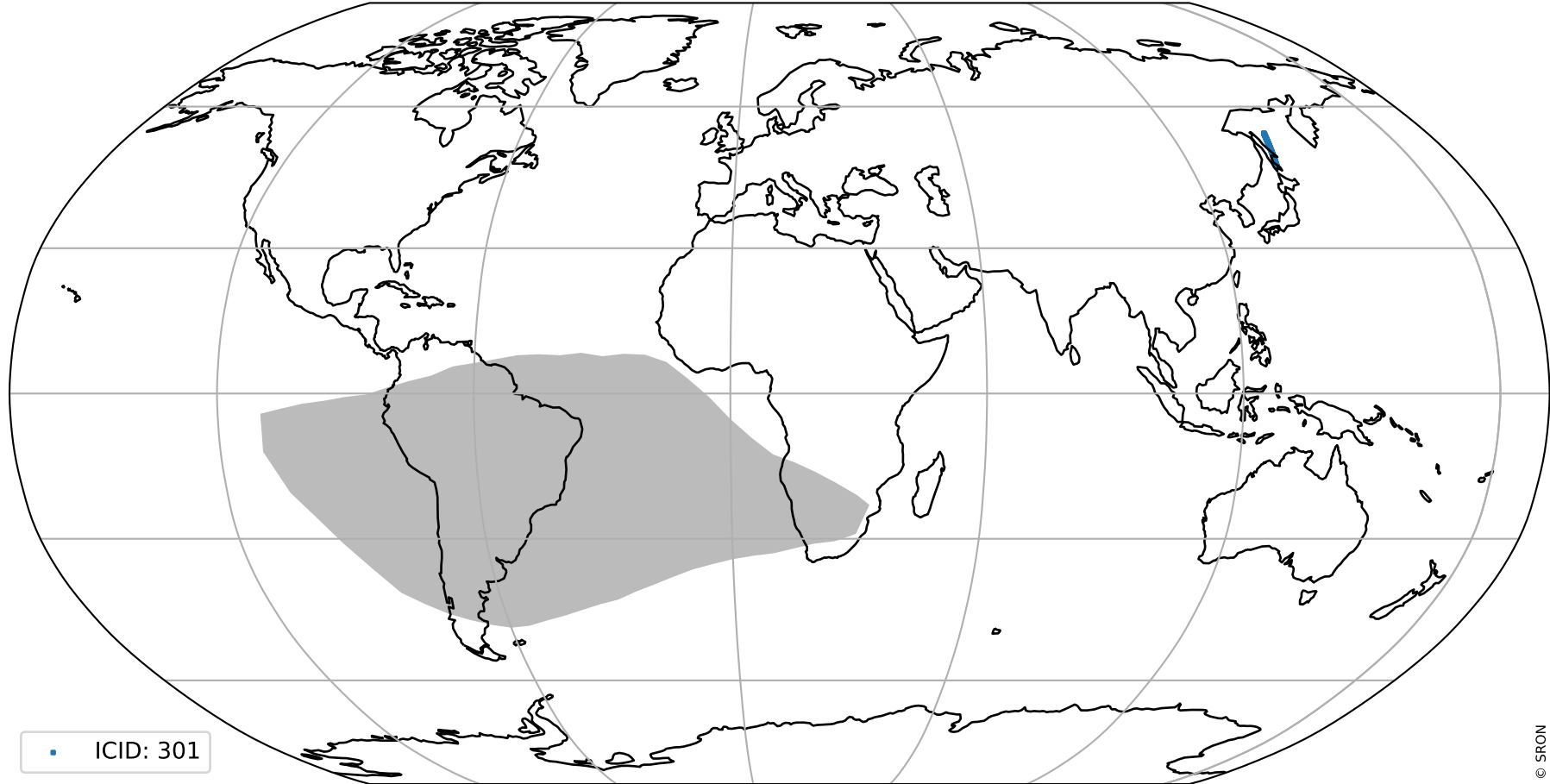
Histograms of pixel-quality



Tropomi SWIR pixel quality (beta nominal)

orbits: 16 in [32617, 32662]
coverage: 2024-01-29 / 2024-02-01
created: 2024-02-02T05:21:35Z

ground-tracks of Sentinel-5P



ICID: 301

Tropomi SWIR pixel quality (beta nominal)

orbits: [1867, 32662]
coverage: 2018-02-20 / 2024-02-01
created: 2024-02-02T05:21:36Z

trend of pixel quality & temperatures

