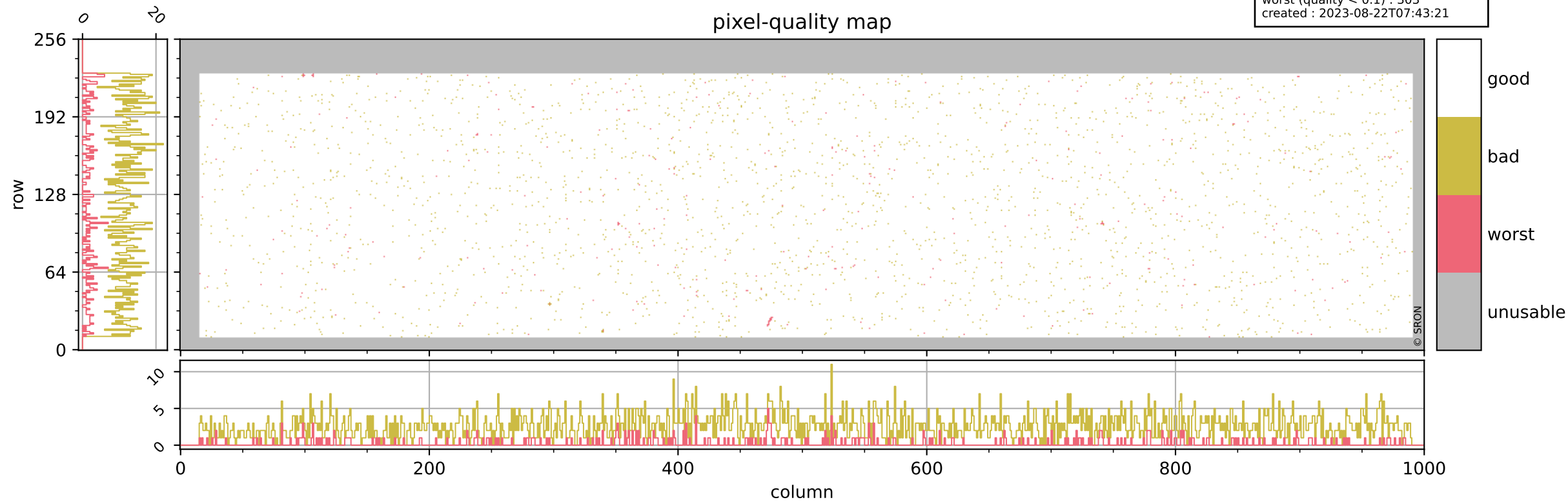


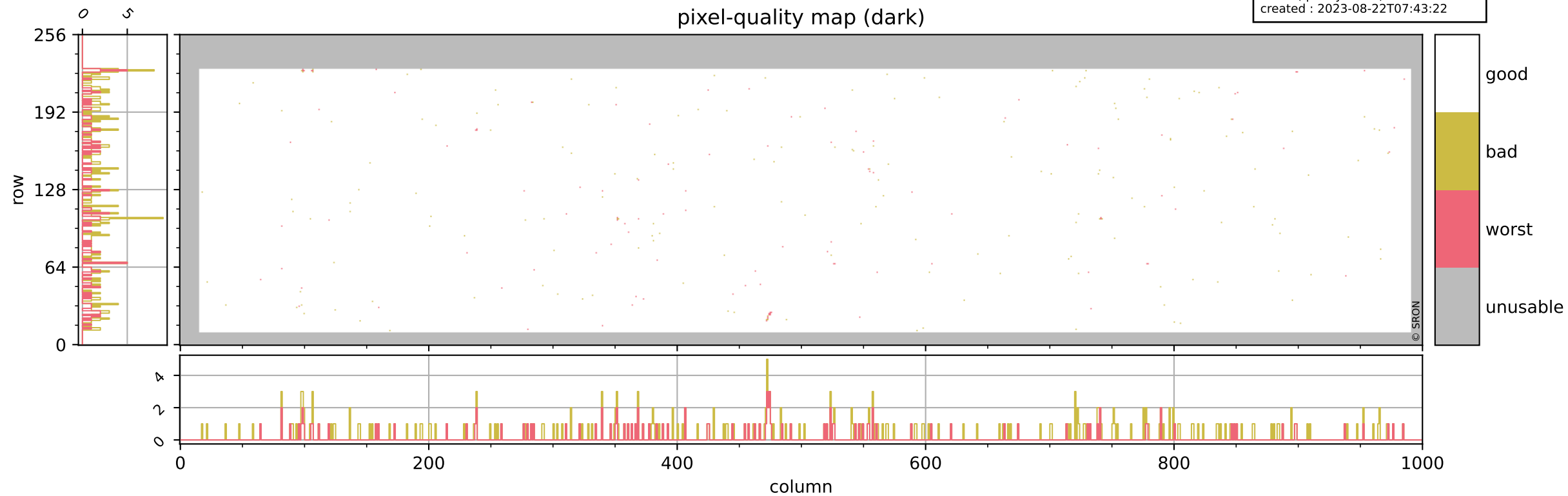
Tropomi SWIR pixel quality (official)

orbits : 20 in [3112, 3157]
coverage : 2018-05-20 / 2018-05-23
bad (quality < 0.8) : 2607
worst (quality < 0.1) : 303
created : 2023-08-22T07:43:21



Tropomi SWIR pixel quality (official)

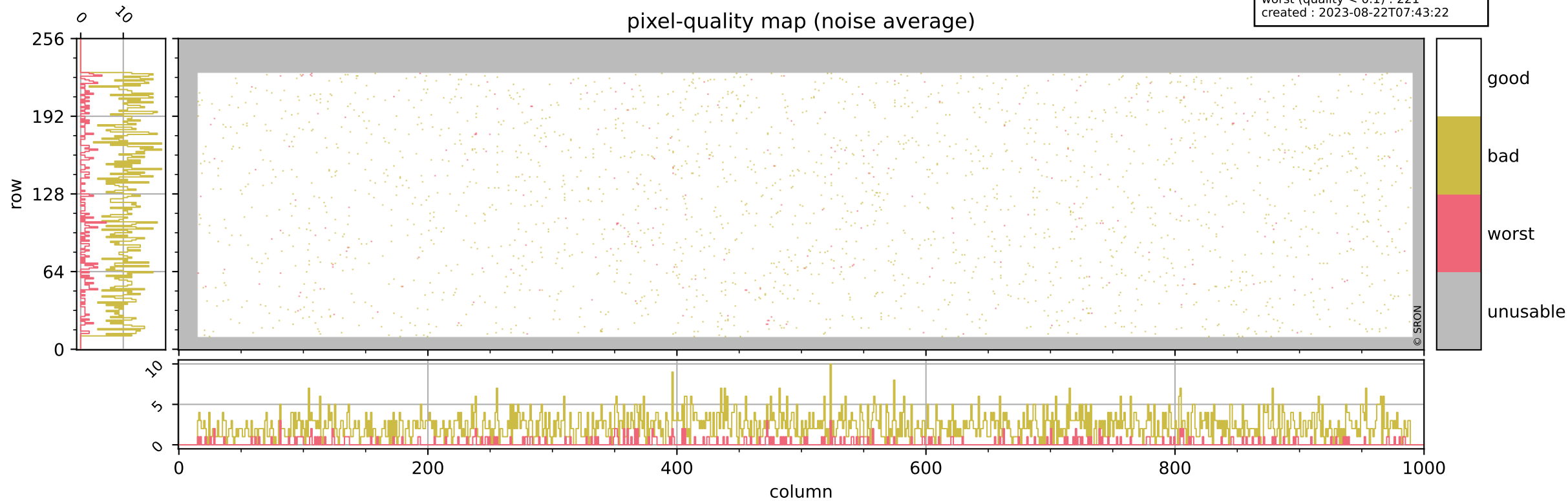
orbits : 20 in [3112, 3157]
coverage : 2018-05-20 / 2018-05-23
bad (quality < 0.8) : 283
worst (quality < 0.1) : 108
created : 2023-08-22T07:43:22



Tropomi SWIR pixel quality (official)

orbits : 20 in [3112, 3157]
coverage : 2018-05-20 / 2018-05-23
bad (quality < 0.8) : 2351
worst (quality < 0.1) : 221
created : 2023-08-22T07:43:22

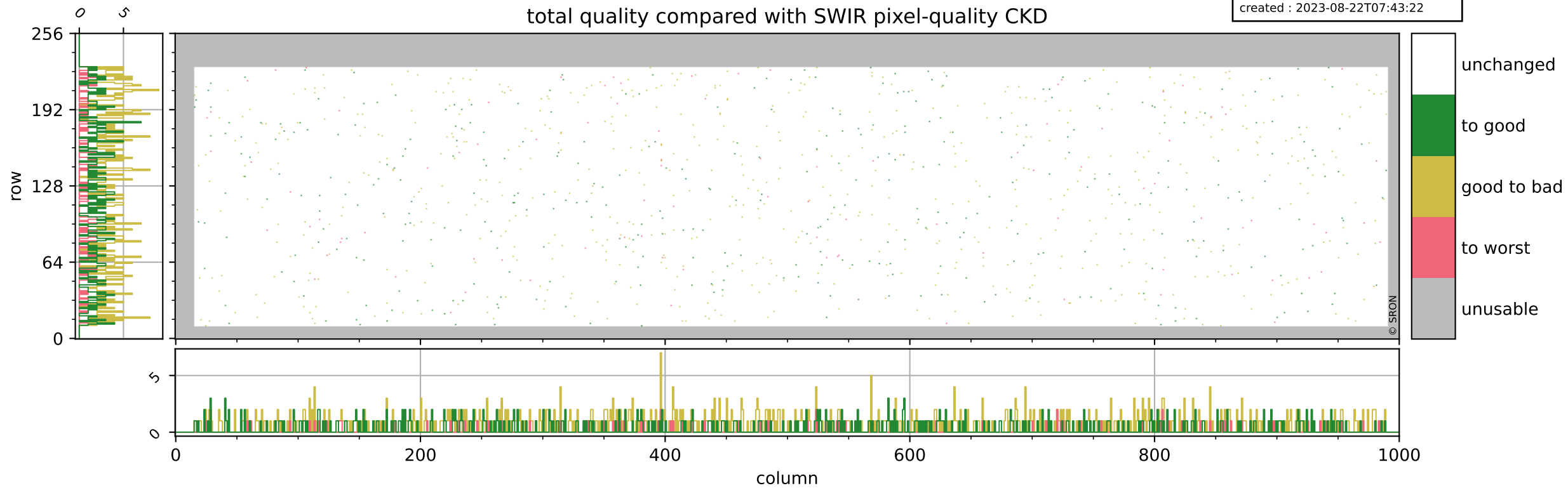
pixel-quality map (noise average)



Tropomi SWIR pixel quality (official)

orbits : 20 in [3112, 3157]
coverage : 2018-05-20 / 2018-05-23
to good : 364
good to bad : 627
to worst : 95
created : 2023-08-22T07:43:22

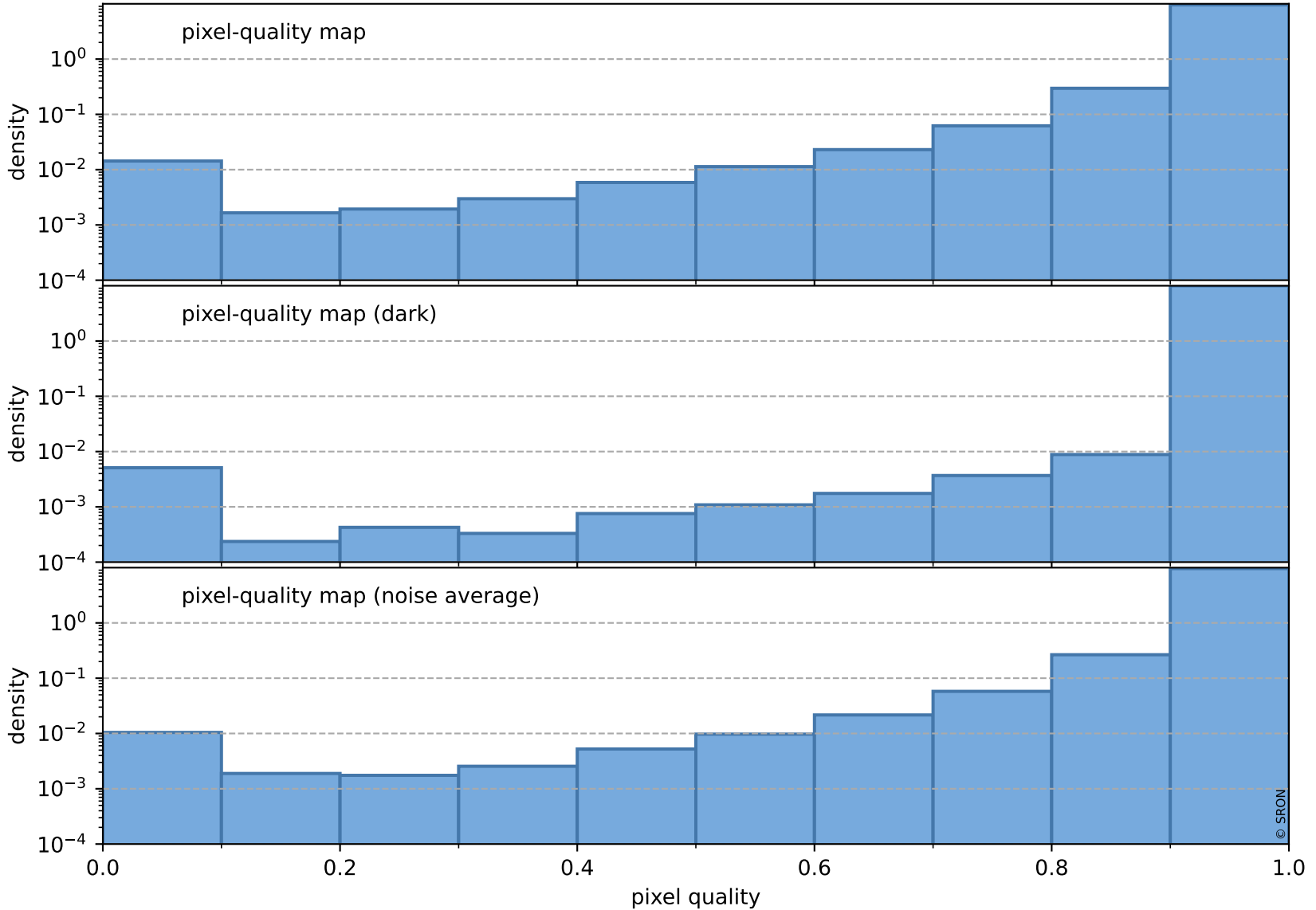
total quality compared with SWIR pixel-quality CKD



Tropomi SWIR pixel quality (official)

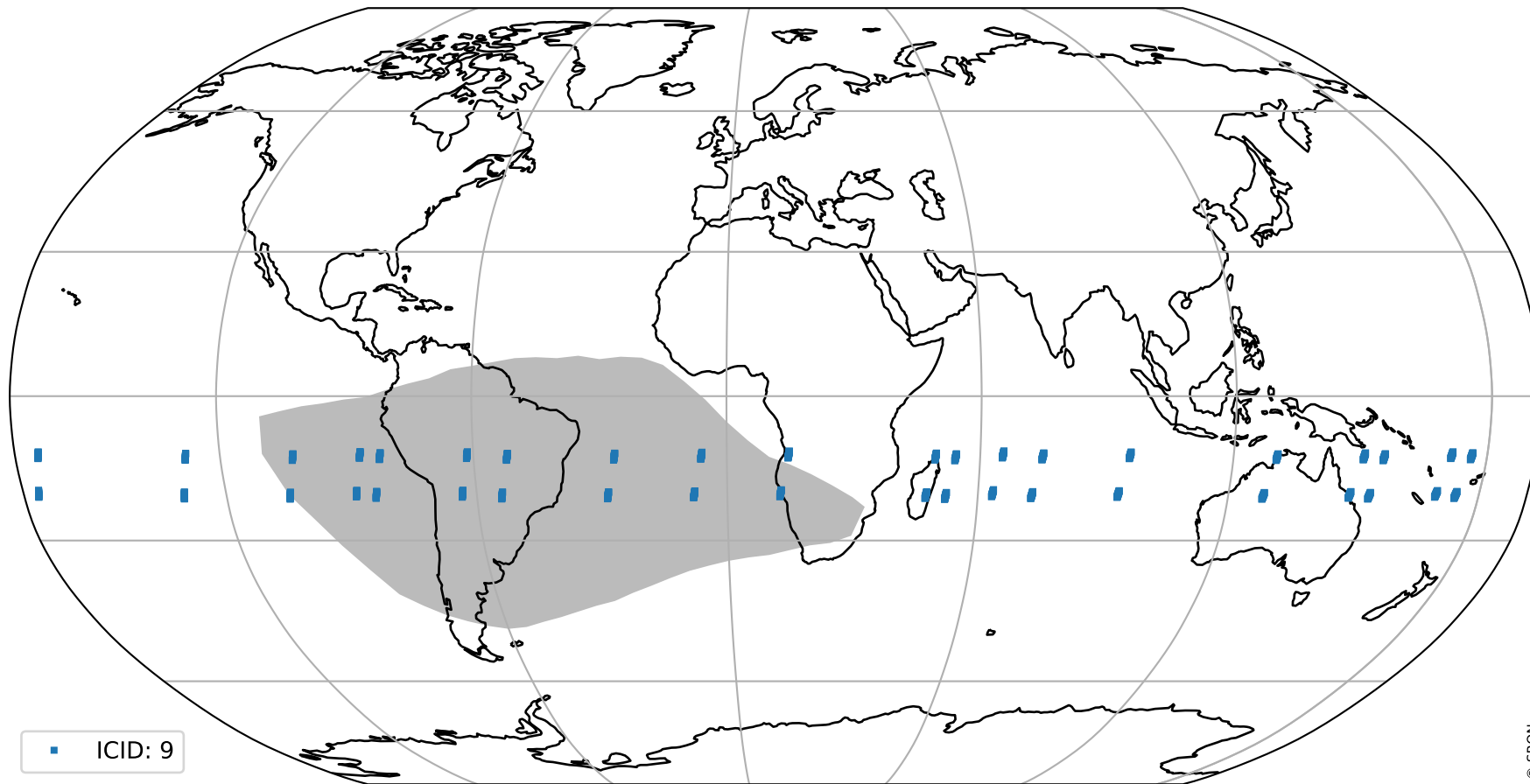
orbits : 20 in [3112, 3157]
coverage : 2018-05-20 / 2018-05-23
created : 2023-08-22T07:43:22

Histograms of pixel-quality



Tropomi SWIR pixel quality (official) ground-tracks of Sentinel-5P

orbits : 20 in [3112, 3157]
coverage : 2018-05-20 / 2018-05-23
created : 2023-08-22T07:43:23



Tropomi SWIR pixel quality (official)

orbits : [2827, 3157]
coverage : 2018-04-30 / 2018-05-23
created : 2023-08-22T07:43:23

trend of pixel quality & temperatures

