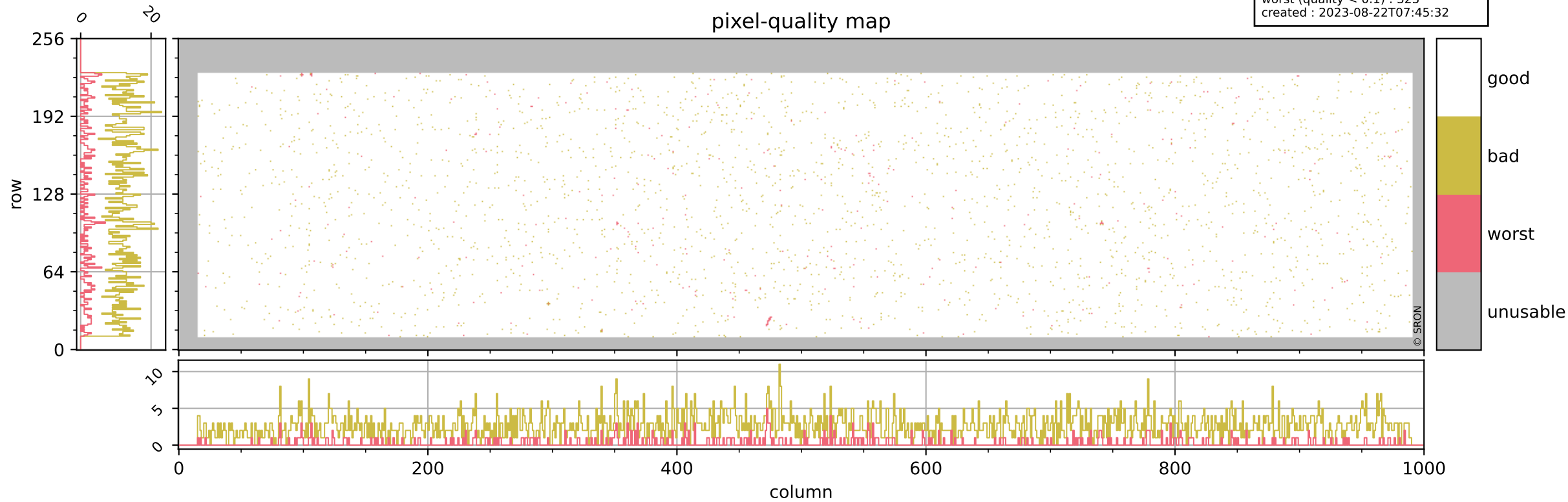


Tropomi SWIR pixel quality (official)

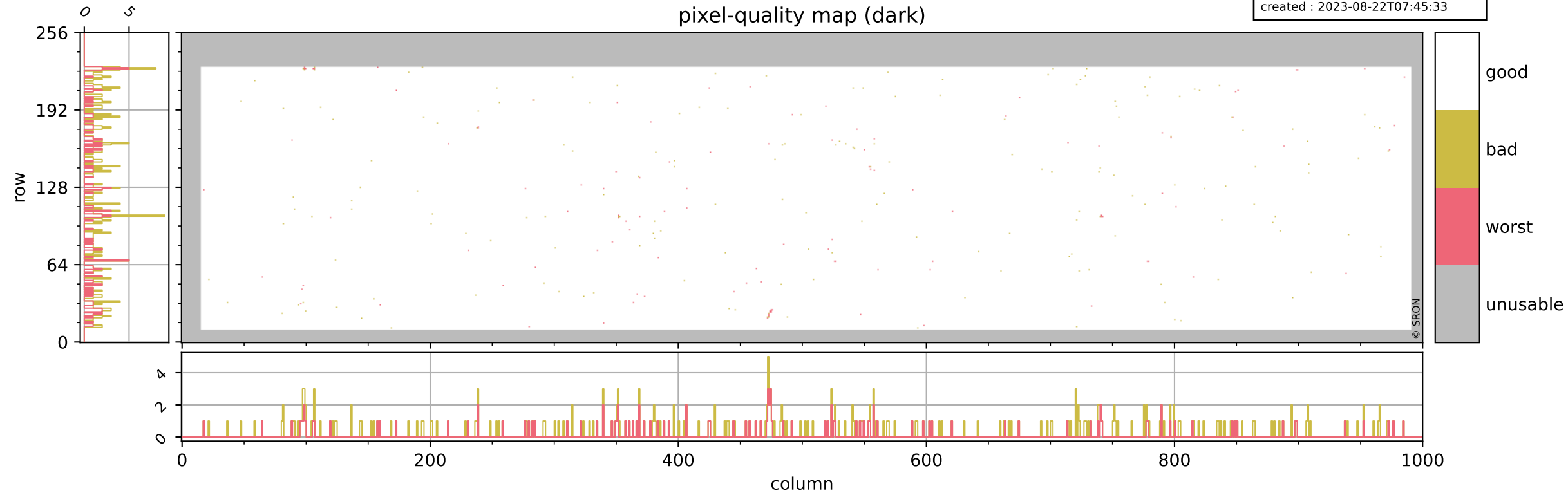
orbits : 20 in [4042, 4087]
coverage : 2018-07-25 / 2018-07-28
bad (quality < 0.8) : 2660
worst (quality < 0.1) : 323
created : 2023-08-22T07:45:32

pixel-quality map



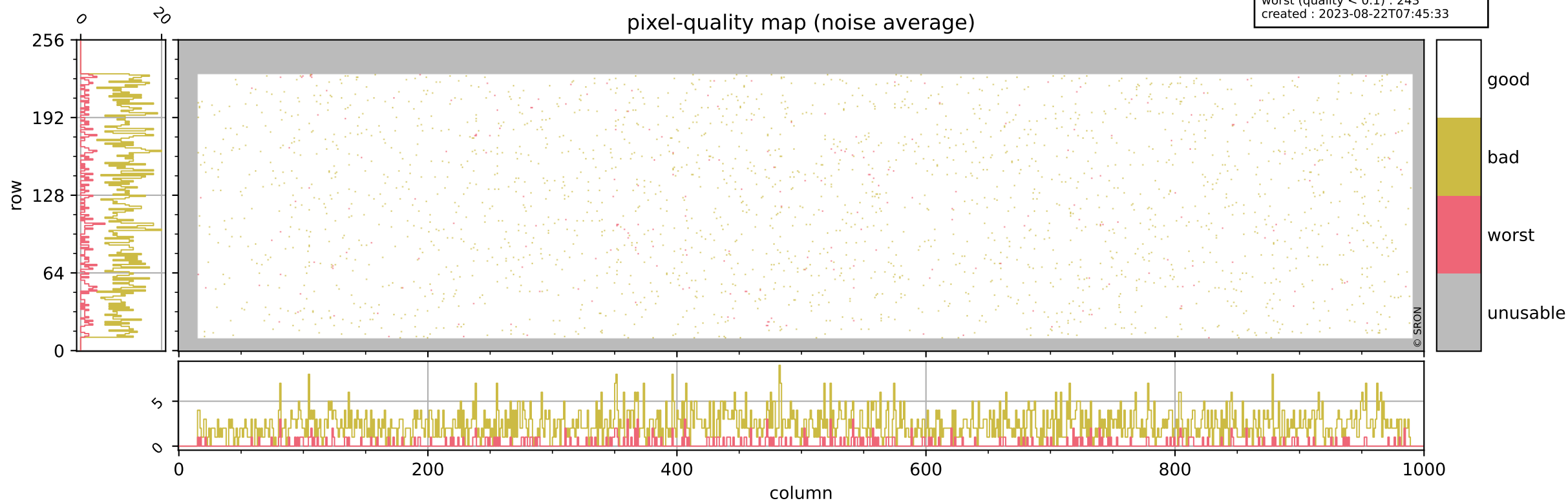
Tropomi SWIR pixel quality (official)

orbits : 20 in [4042, 4087]
coverage : 2018-07-25 / 2018-07-28
bad (quality < 0.8) : 290
worst (quality < 0.1) : 111
created : 2023-08-22T07:45:33



Tropomi SWIR pixel quality (official)

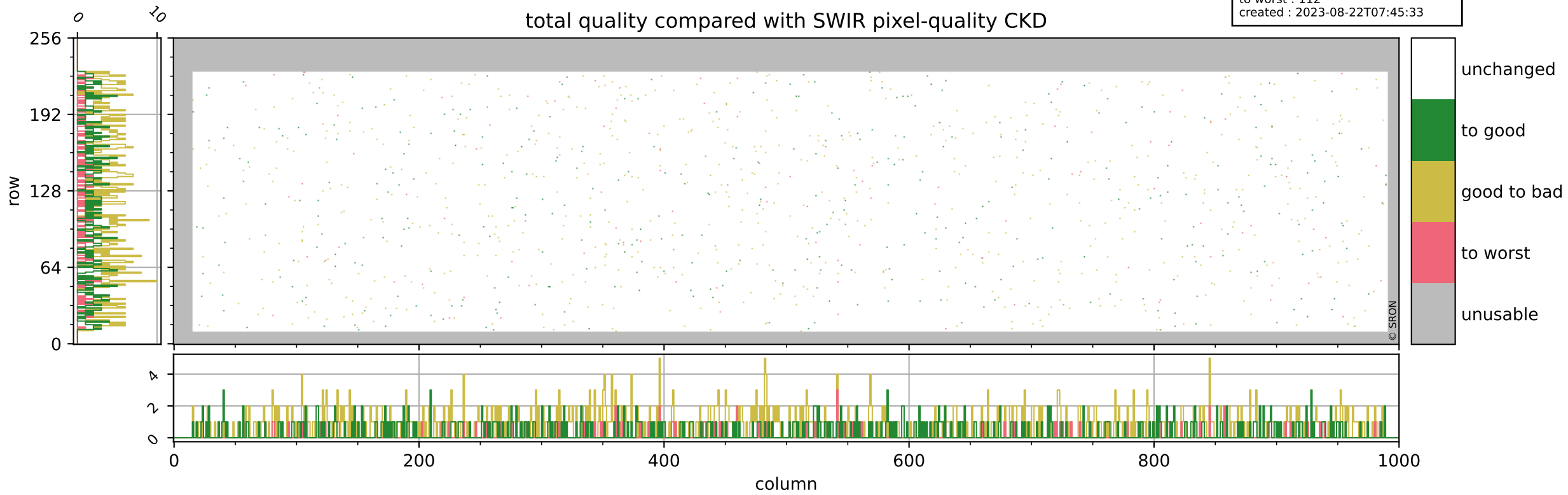
orbits : 20 in [4042, 4087]
coverage : 2018-07-25 / 2018-07-28
bad (quality < 0.8) : 2402
worst (quality < 0.1) : 243
created : 2023-08-22T07:45:33



Tropomi SWIR pixel quality (official)

orbits : 20 in [4042, 4087]
coverage : 2018-07-25 / 2018-07-28
to good : 361
good to bad : 665
to worst : 112
created : 2023-08-22T07:45:33

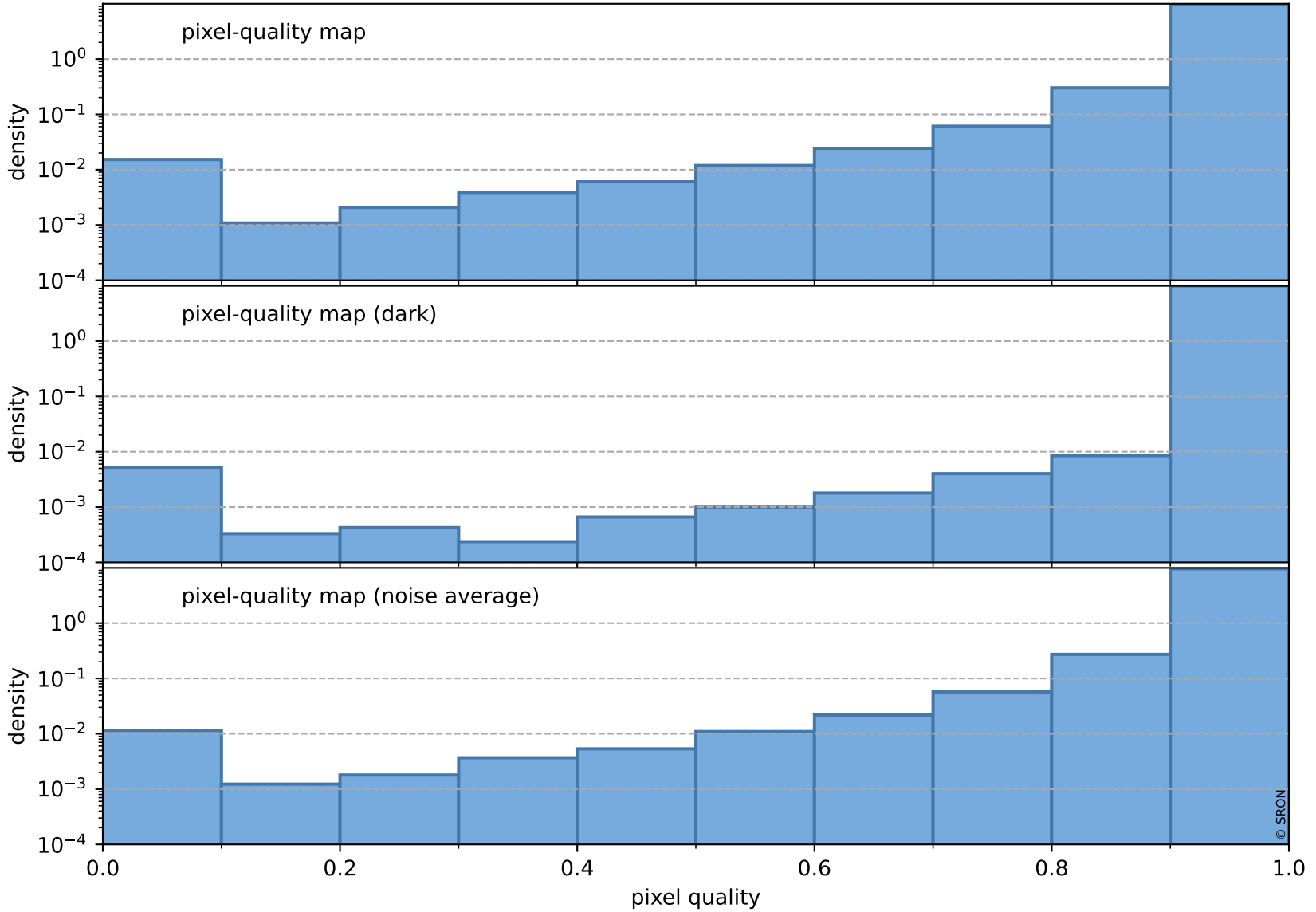
total quality compared with SWIR pixel-quality CKD



Tropomi SWIR pixel quality (official)

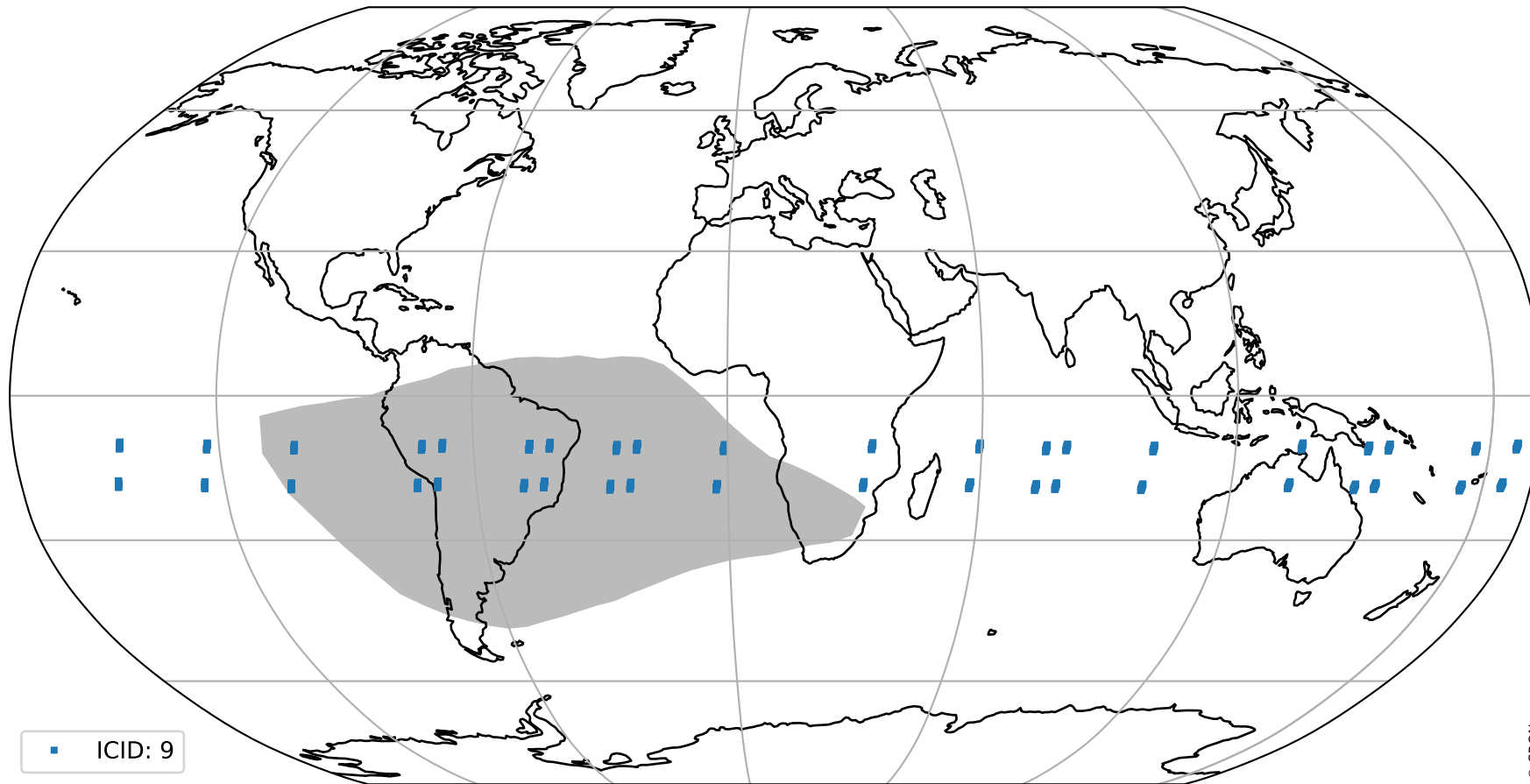
orbits : 20 in [4042, 4087]
coverage : 2018-07-25 / 2018-07-28
created : 2023-08-22T07:45:33

Histograms of pixel-quality



Tropomi SWIR pixel quality (official) ground-tracks of Sentinel-5P

orbits : 20 in [4042, 4087]
coverage : 2018-07-25 / 2018-07-28
created : 2023-08-22T07:45:34



Tropomi SWIR pixel quality (official)

orbits : [2827, 4087]
coverage : 2018-04-30 / 2018-07-28
created : 2023-08-22T07:45:34

trend of pixel quality & temperatures

