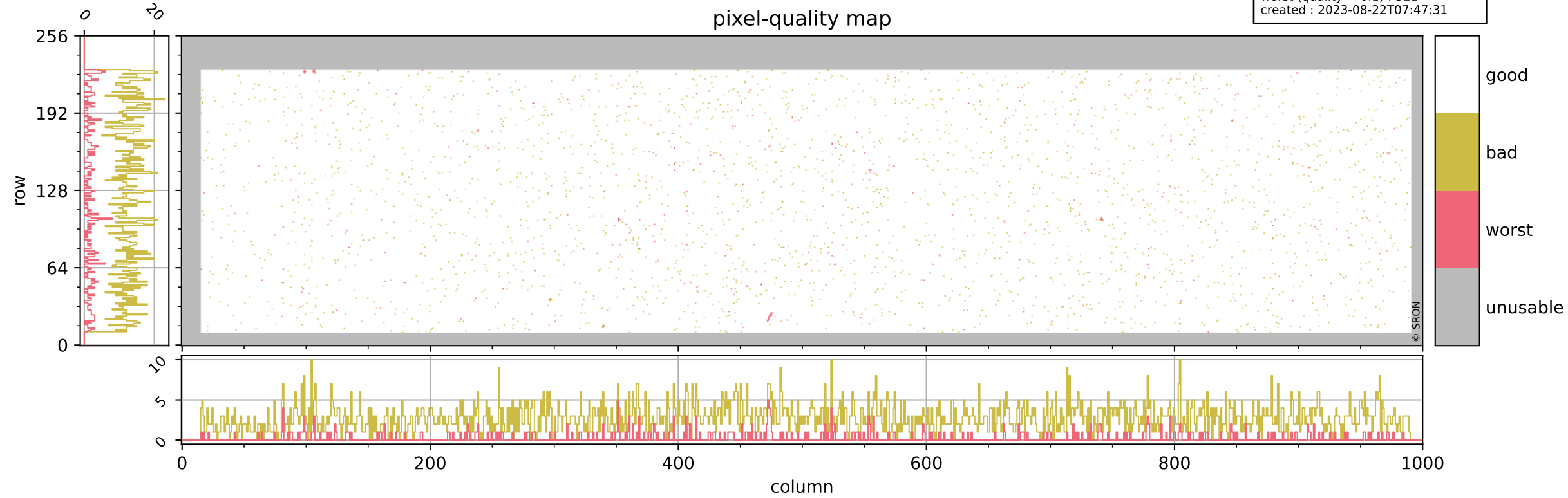


Tropomi SWIR pixel quality (official)

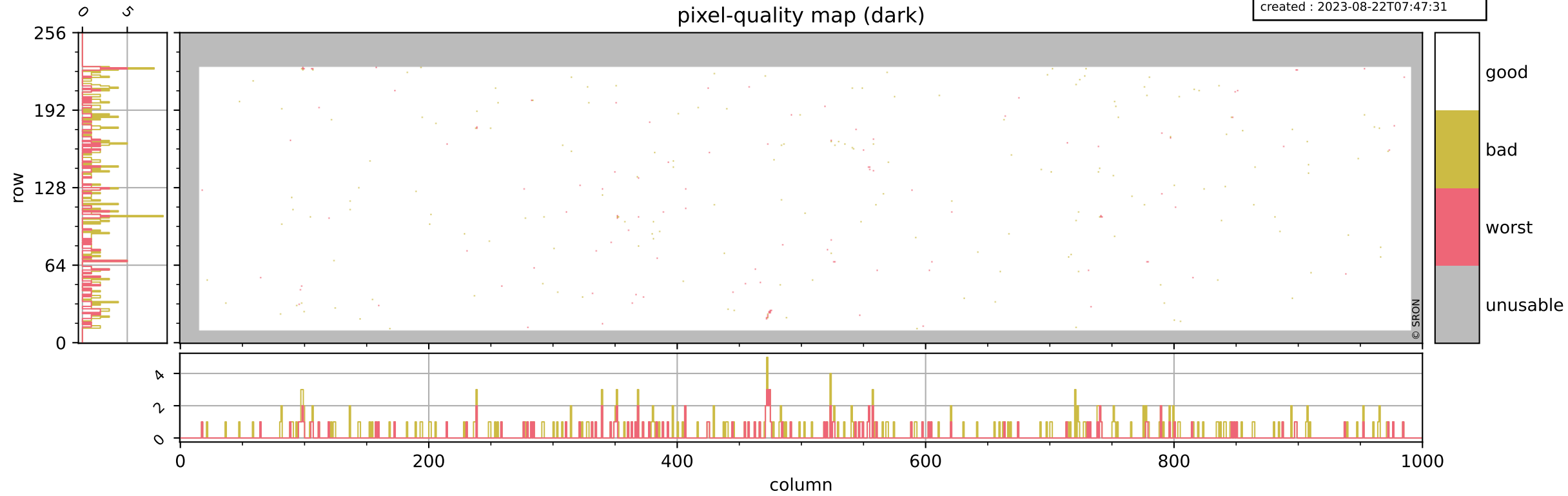
orbits : 20 in [4852, 4897]
coverage : 2018-09-20 / 2018-09-23
bad (quality < 0.8) : 2787
worst (quality < 0.1) : 311
created : 2023-08-22T07:47:31



Tropomi SWIR pixel quality (official)

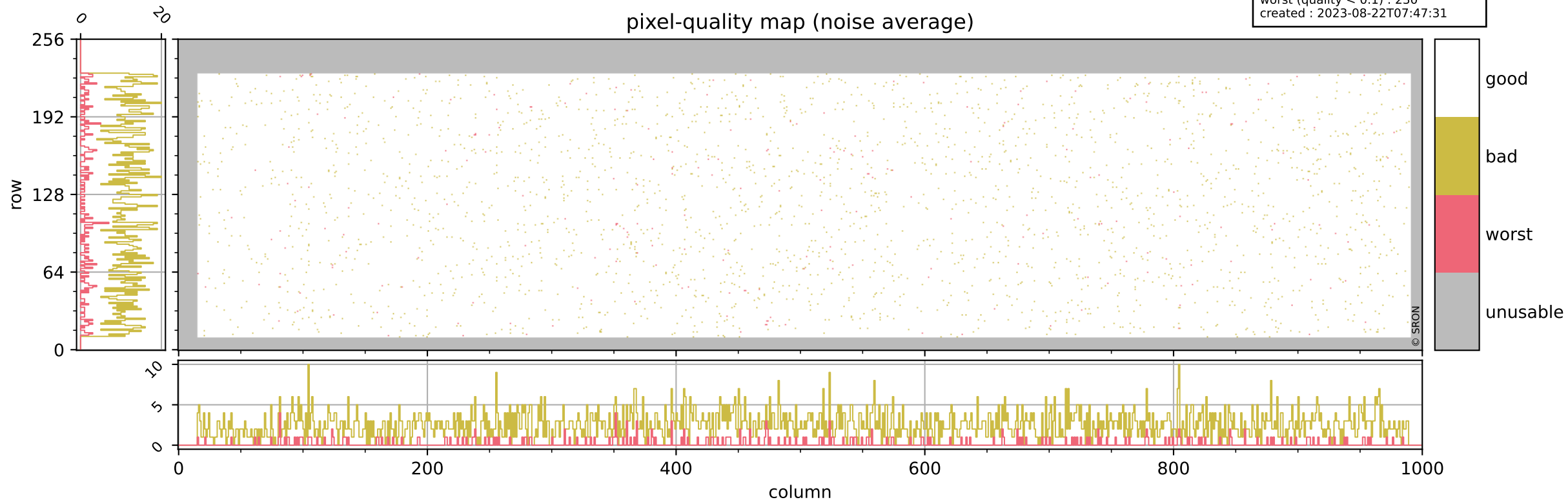
orbits : 20 in [4852, 4897]
coverage : 2018-09-20 / 2018-09-23
bad (quality < 0.8) : 292
worst (quality < 0.1) : 115
created : 2023-08-22T07:47:31

pixel-quality map (dark)



Tropomi SWIR pixel quality (official)

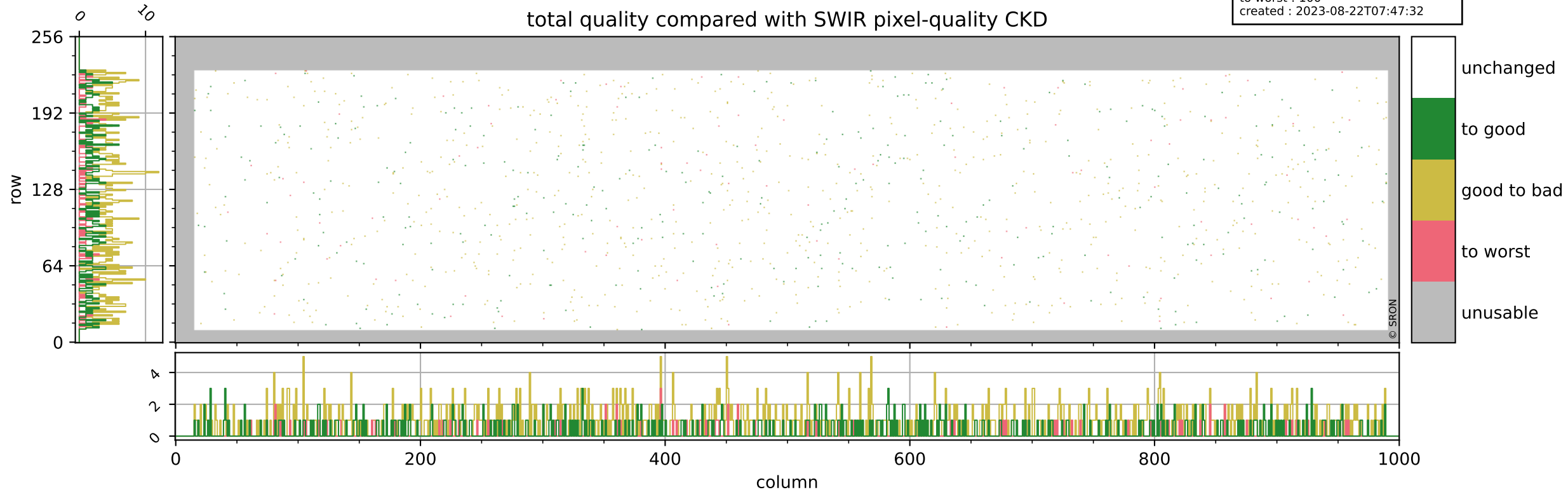
orbits : 20 in [4852, 4897]
coverage : 2018-09-20 / 2018-09-23
bad (quality < 0.8) : 2548
worst (quality < 0.1) : 230
created : 2023-08-22T07:47:31



Tropomi SWIR pixel quality (official)

orbits : 20 in [4852, 4897]
coverage : 2018-09-20 / 2018-09-23
to good : 347
good to bad : 782
to worst : 100
created : 2023-08-22T07:47:32

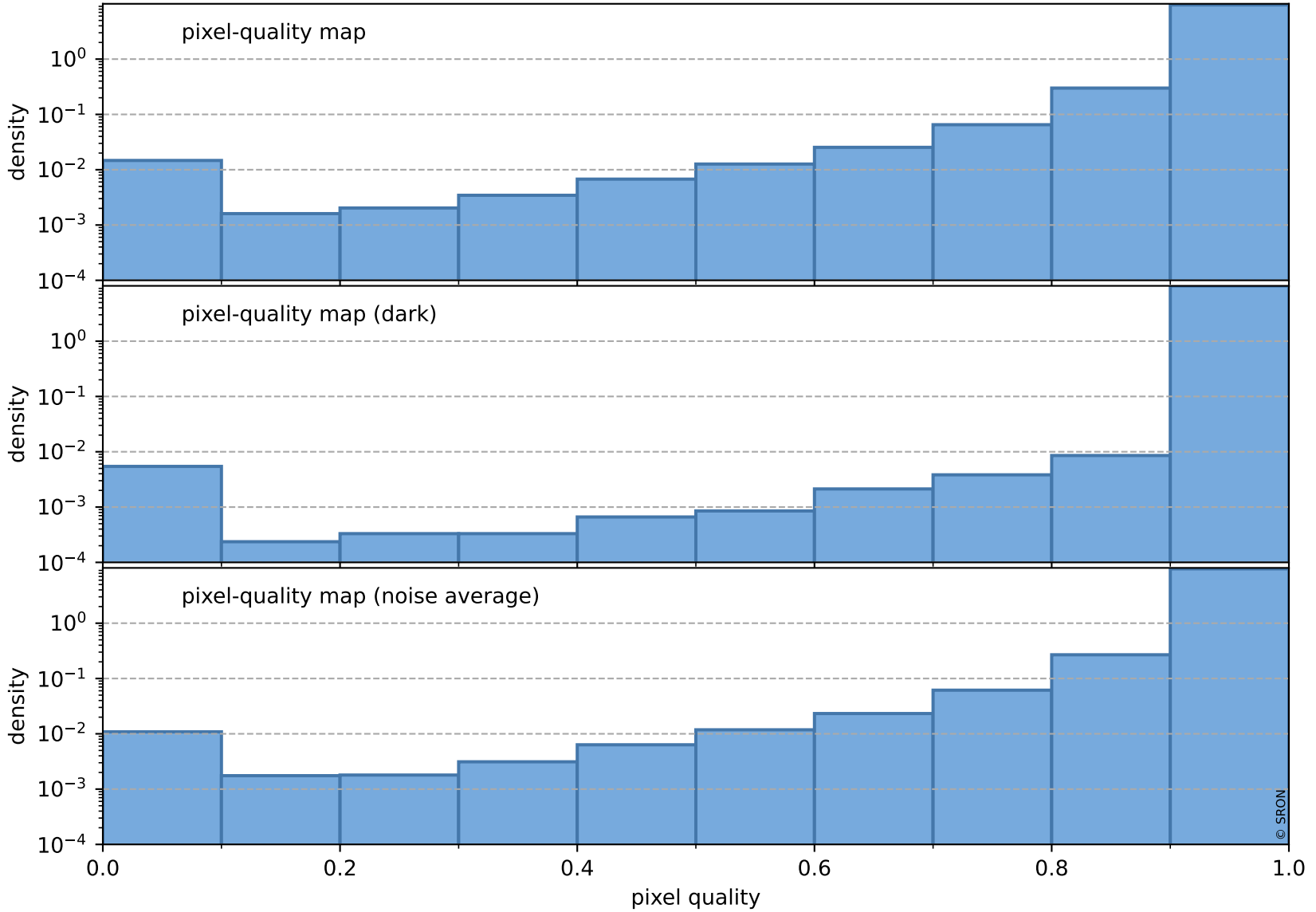
total quality compared with SWIR pixel-quality CKD



Tropomi SWIR pixel quality (official)

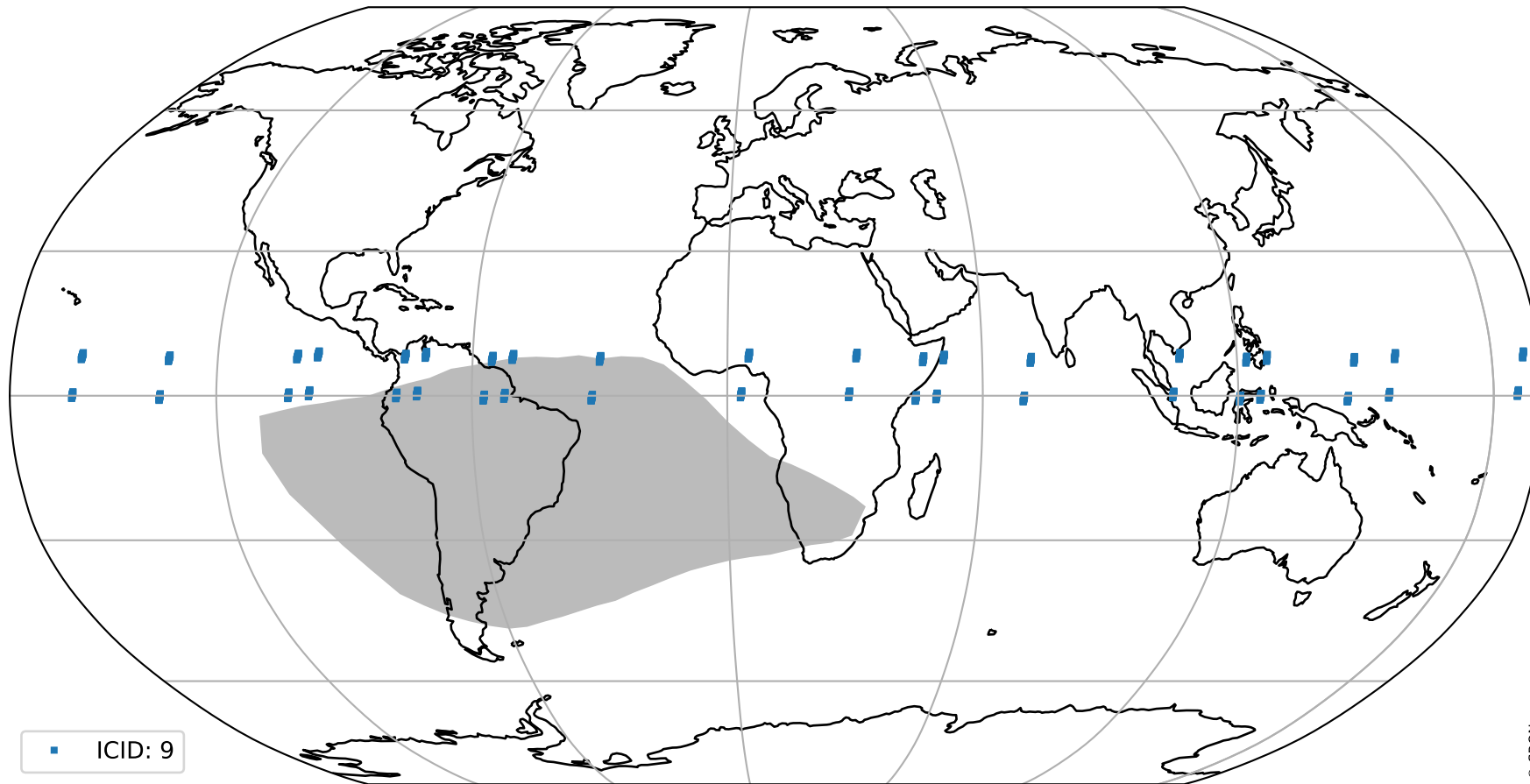
orbits : 20 in [4852, 4897]
coverage : 2018-09-20 / 2018-09-23
created : 2023-08-22T07:47:32

Histograms of pixel-quality



Tropomi SWIR pixel quality (official) ground-tracks of Sentinel-5P

orbits : 20 in [4852, 4897]
coverage : 2018-09-20 / 2018-09-23
created : 2023-08-22T07:47:32



Tropomi SWIR pixel quality (official)

orbits : [2827, 4897]
coverage : 2018-04-30 / 2018-09-23
created : 2023-08-22T07:47:33

trend of pixel quality & temperatures

