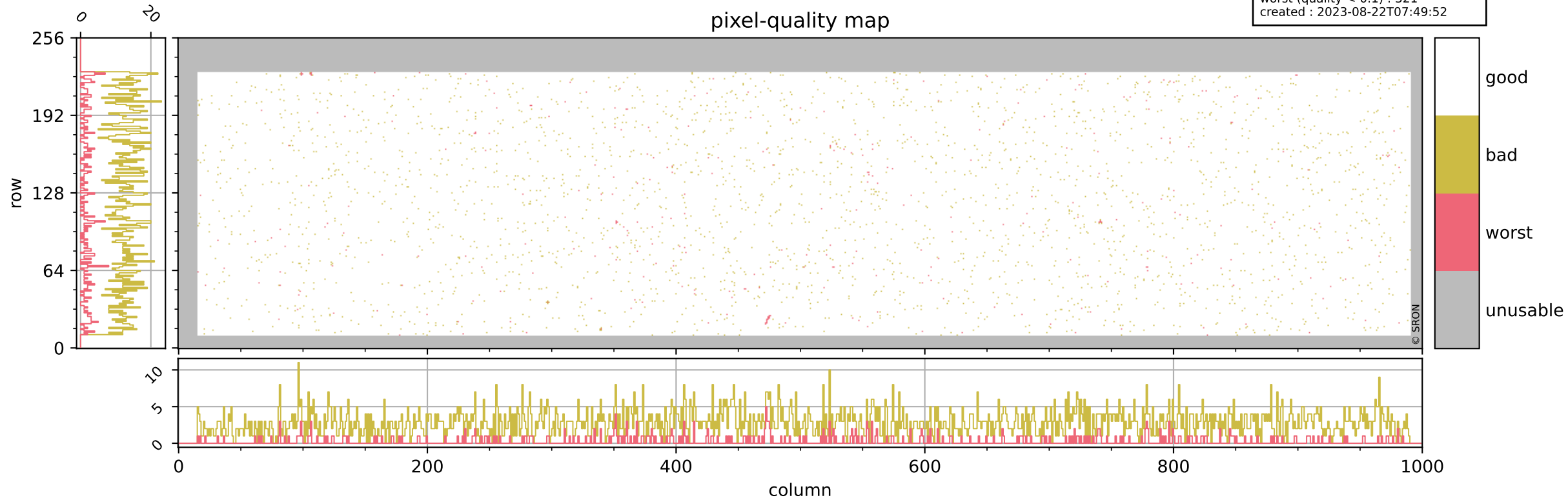


Tropomi SWIR pixel quality (official)

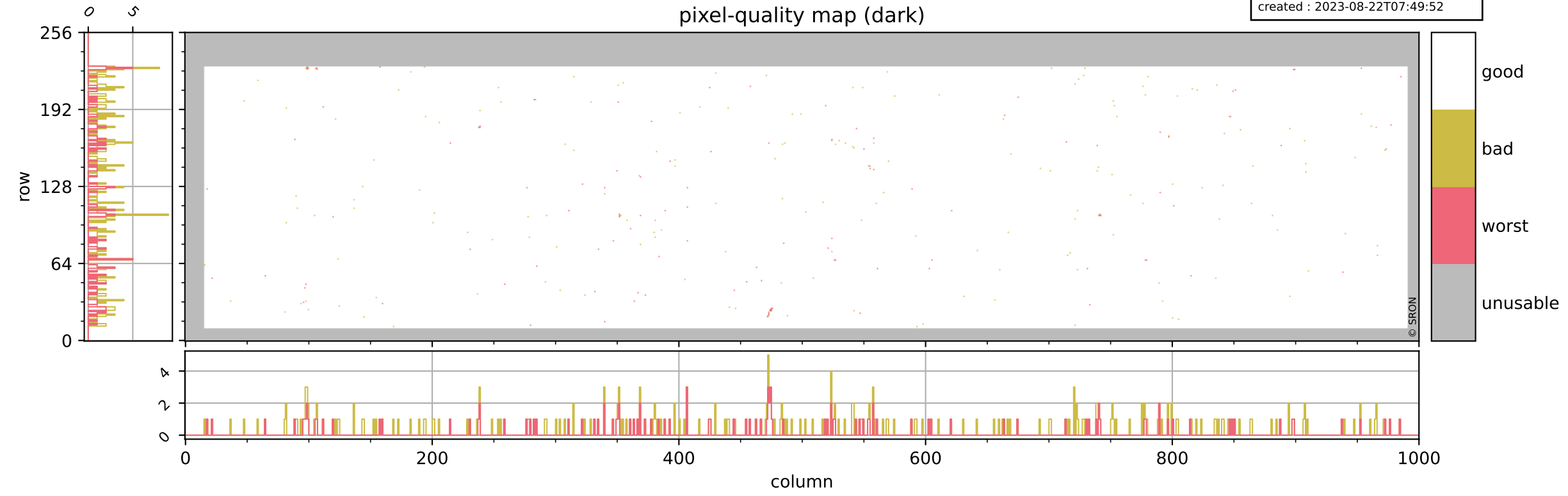
orbits : 20 in [5842, 5887]
coverage : 2018-11-29 / 2018-12-02
bad (quality < 0.8) : 2817
worst (quality < 0.1) : 321
created : 2023-08-22T07:49:52

pixel-quality map



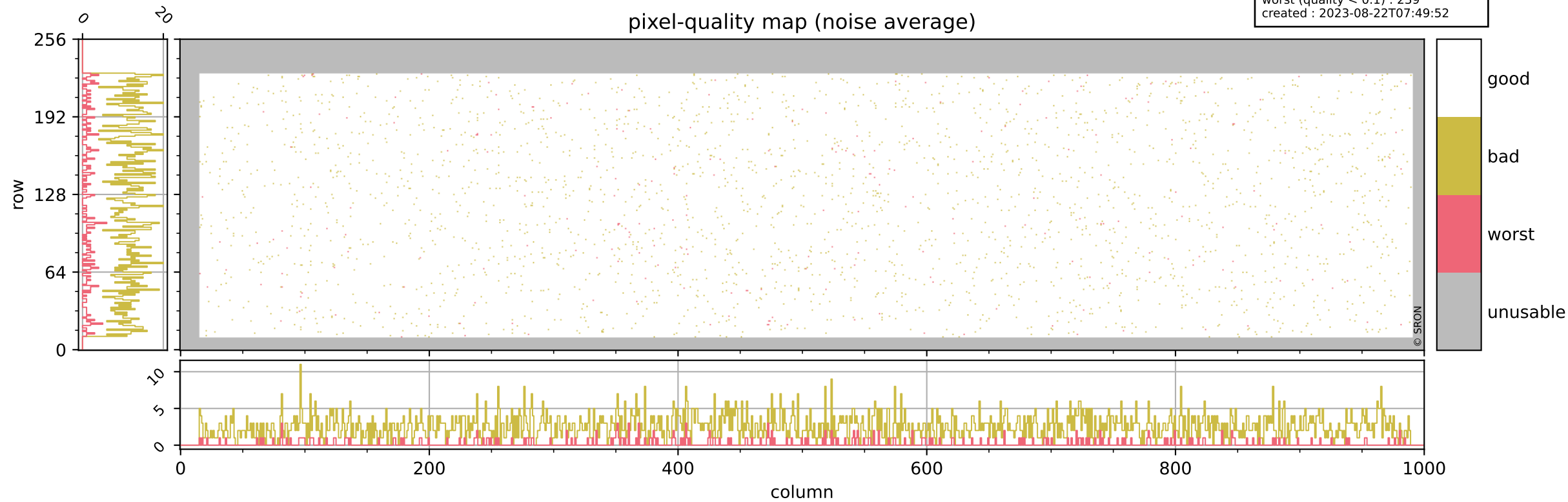
Tropomi SWIR pixel quality (official)

orbits : 20 in [5842, 5887]
coverage : 2018-11-29 / 2018-12-02
bad (quality < 0.8) : 294
worst (quality < 0.1) : 113
created : 2023-08-22T07:49:52



Tropomi SWIR pixel quality (official)

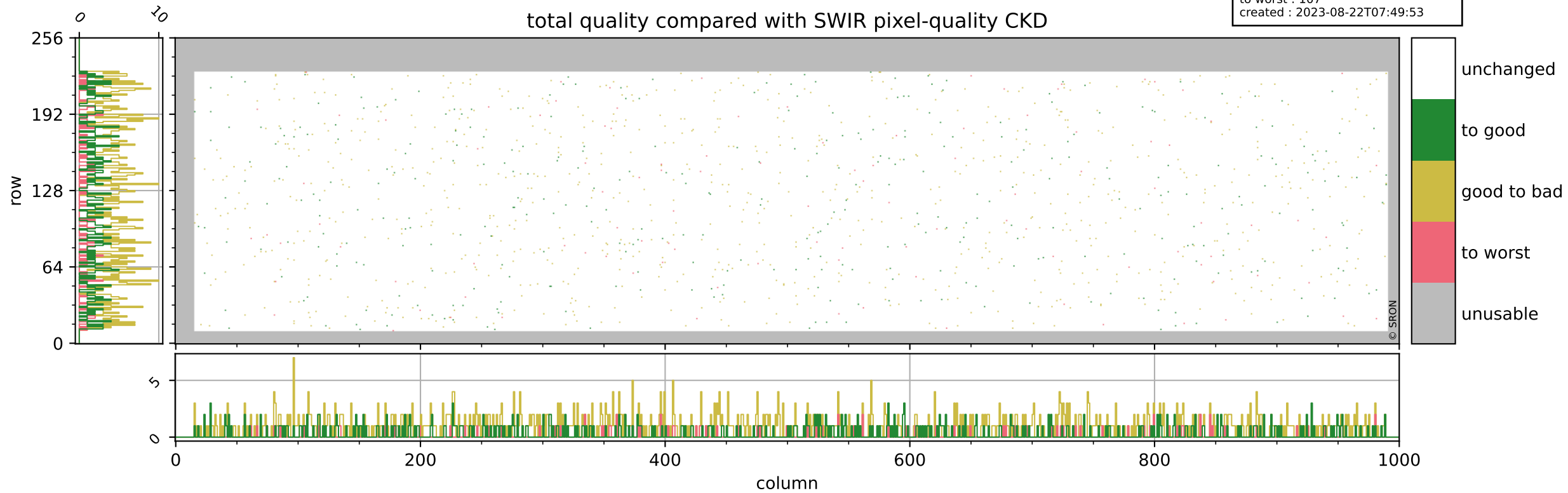
orbits : 20 in [5842, 5887]
coverage : 2018-11-29 / 2018-12-02
bad (quality < 0.8) : 2575
worst (quality < 0.1) : 239
created : 2023-08-22T07:49:52



Tropomi SWIR pixel quality (official)

orbits : 20 in [5842, 5887]
coverage : 2018-11-29 / 2018-12-02
to good : 353
good to bad : 813
to worst : 107
created : 2023-08-22T07:49:53

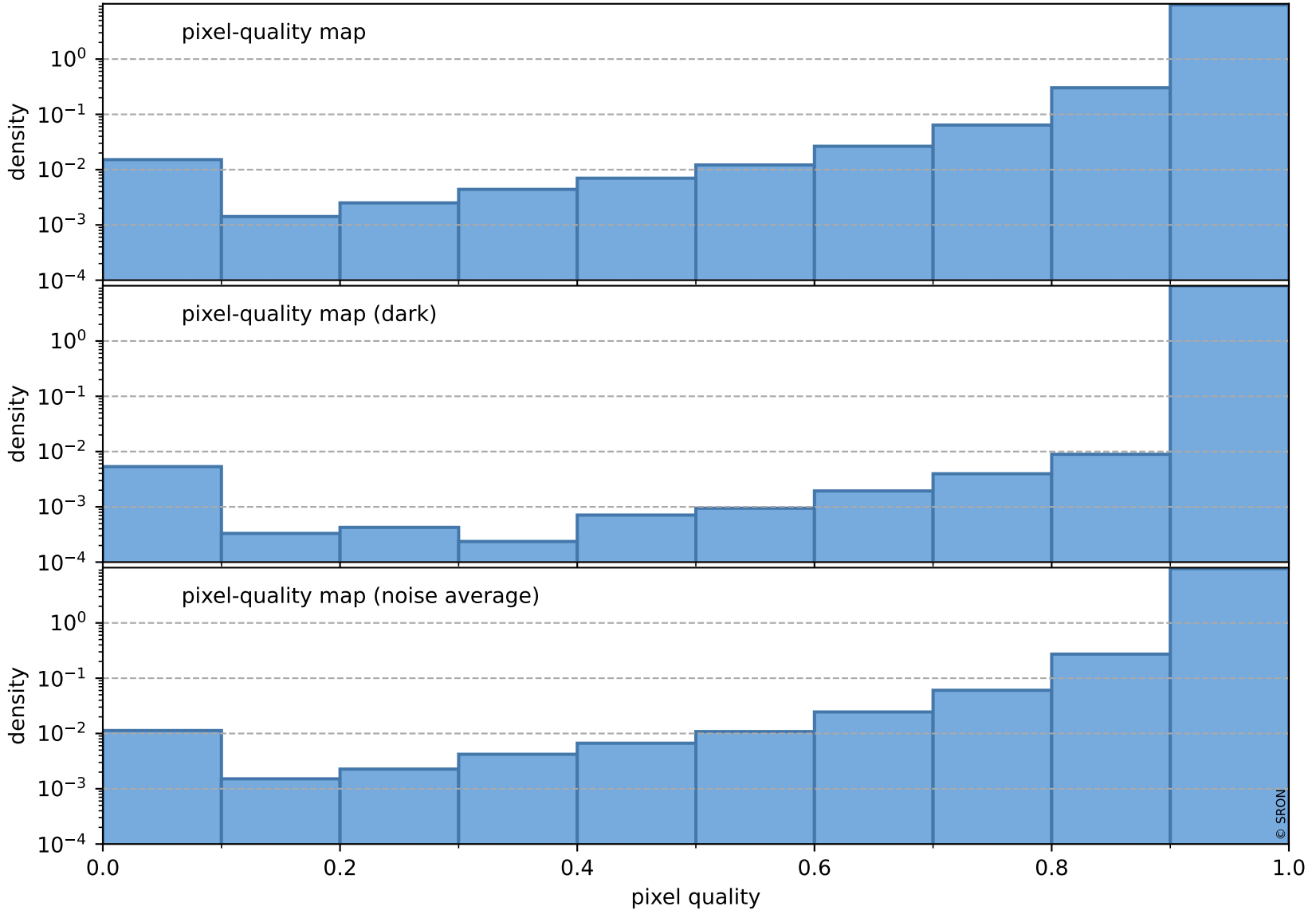
total quality compared with SWIR pixel-quality CKD



Tropomi SWIR pixel quality (official)

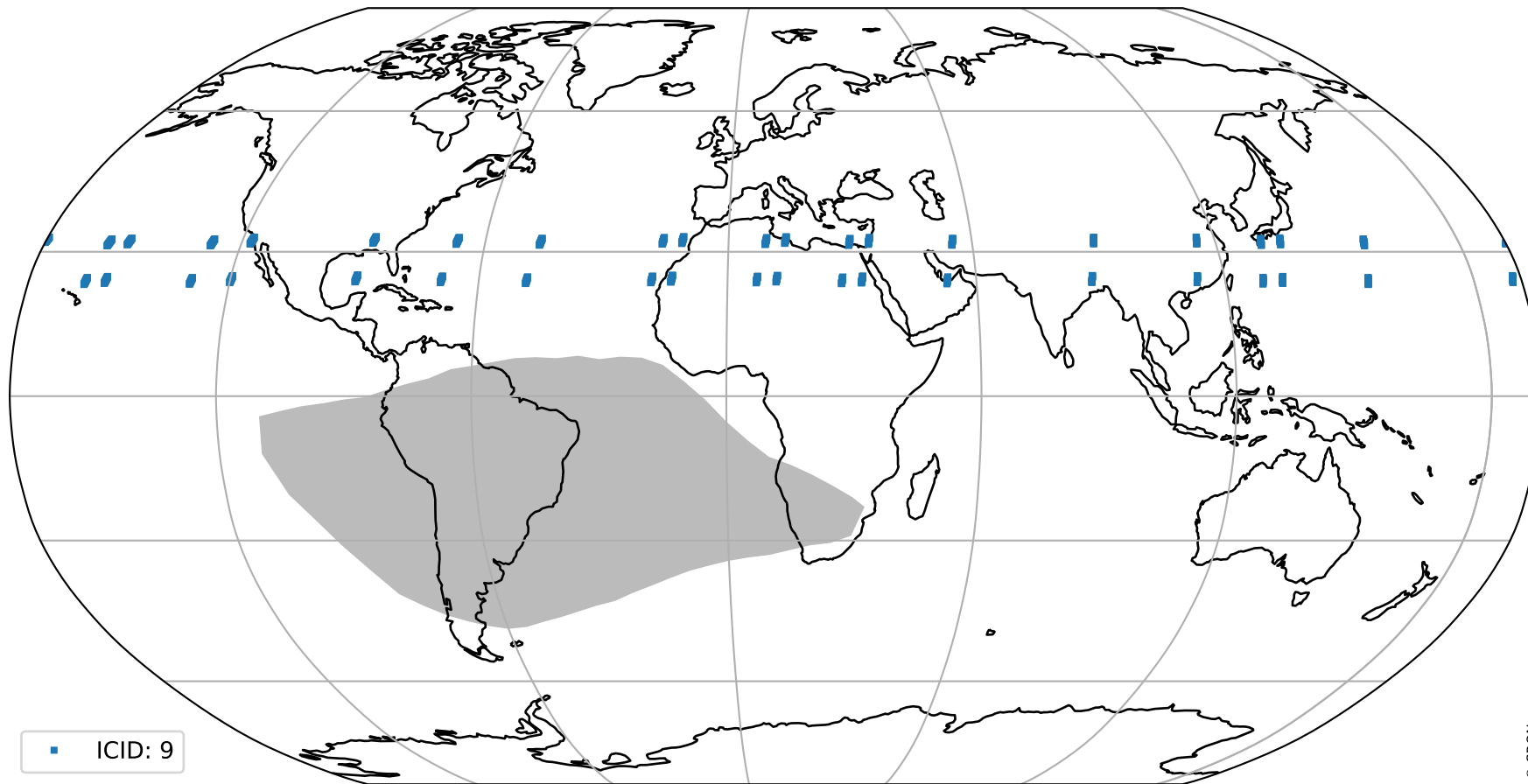
orbits : 20 in [5842, 5887]
coverage : 2018-11-29 / 2018-12-02
created : 2023-08-22T07:49:53

Histograms of pixel-quality



Tropomi SWIR pixel quality (official) ground-tracks of Sentinel-5P

orbits : 20 in [5842, 5887]
coverage : 2018-11-29 / 2018-12-02
created : 2023-08-22T07:49:53



Tropomi SWIR pixel quality (official)

orbits : [2827, 5887]
coverage : 2018-04-30 / 2018-12-02
created : 2023-08-22T07:49:53

trend of pixel quality & temperatures

