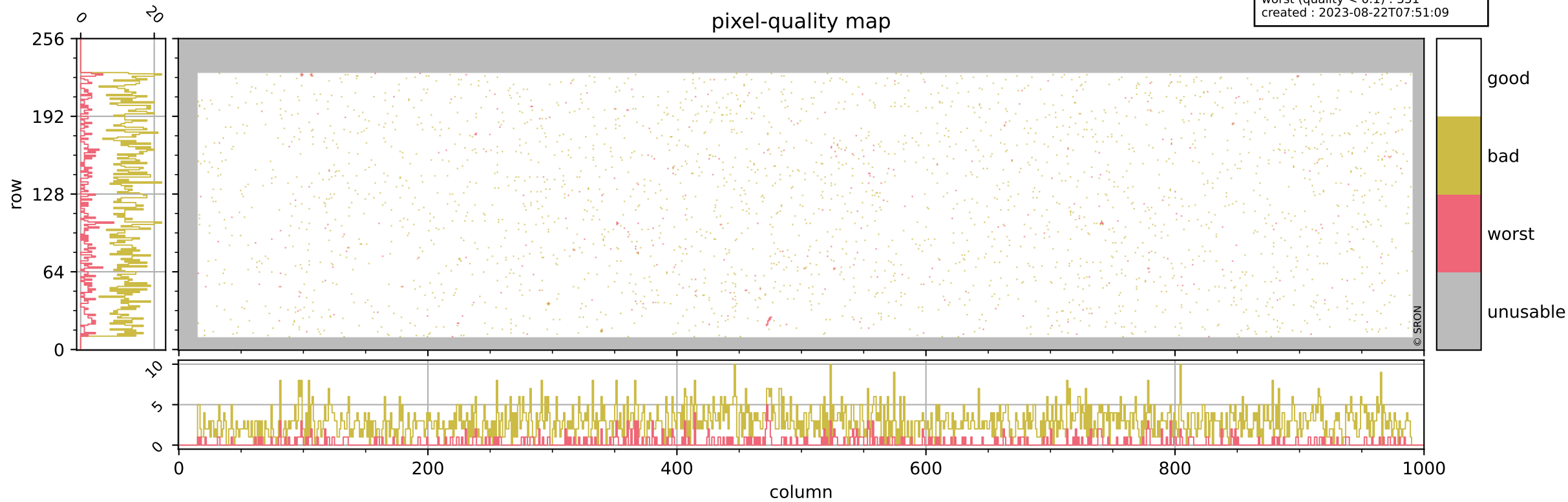


# Tropomi SWIR pixel quality (official)

orbits : 20 in [6382, 6427]  
coverage : 2019-01-06 / 2019-01-09  
bad (quality < 0.8) : 2861  
worst (quality < 0.1) : 331  
created : 2023-08-22T07:51:09

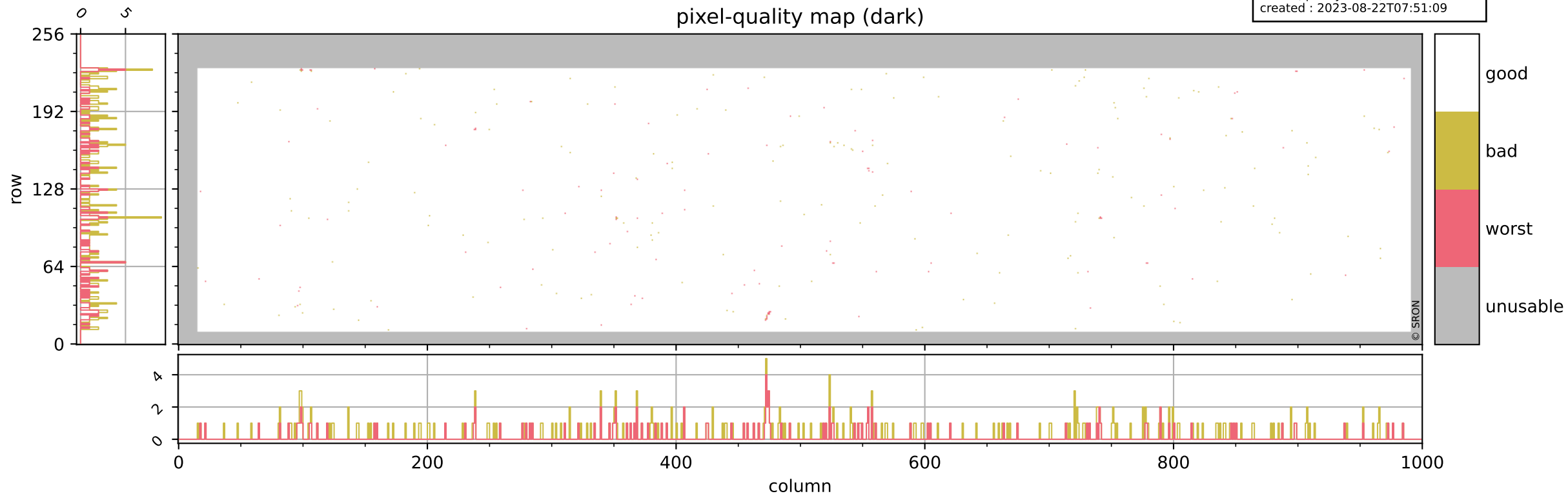
## pixel-quality map



# Tropomi SWIR pixel quality (official)

orbits : 20 in [6382, 6427]  
coverage : 2019-01-06 / 2019-01-09  
bad (quality < 0.8) : 293  
worst (quality < 0.1) : 115  
created : 2023-08-22T07:51:09

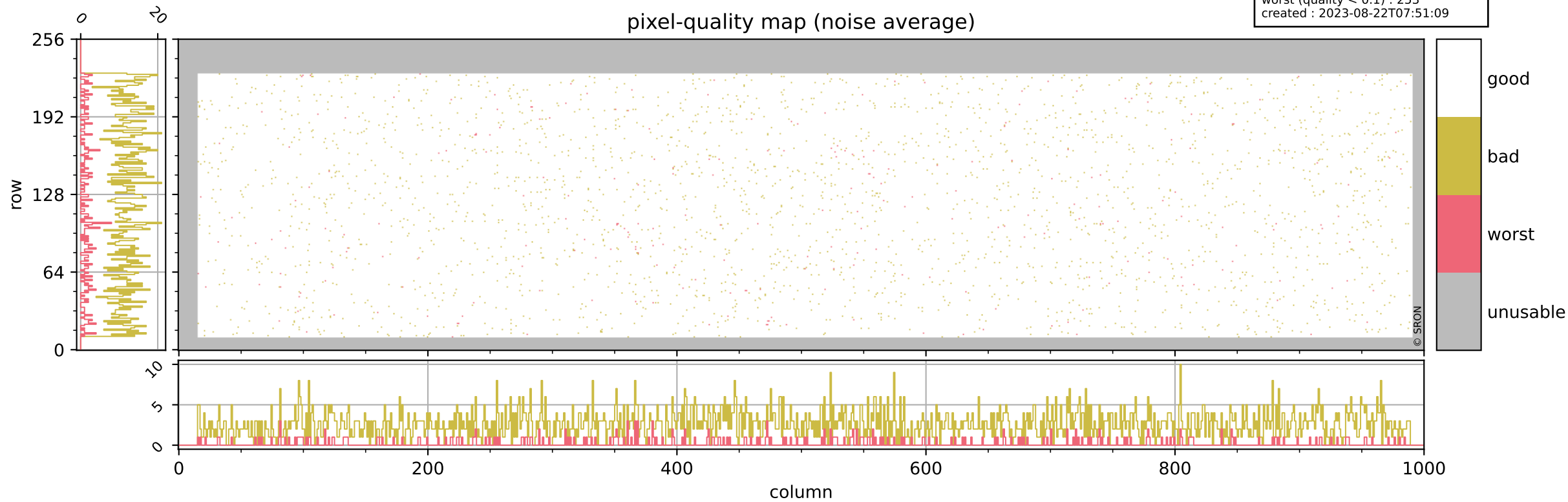
## pixel-quality map (dark)



# Tropomi SWIR pixel quality (official)

orbits : 20 in [6382, 6427]  
coverage : 2019-01-06 / 2019-01-09  
bad (quality < 0.8) : 2630  
worst (quality < 0.1) : 253  
created : 2023-08-22T07:51:09

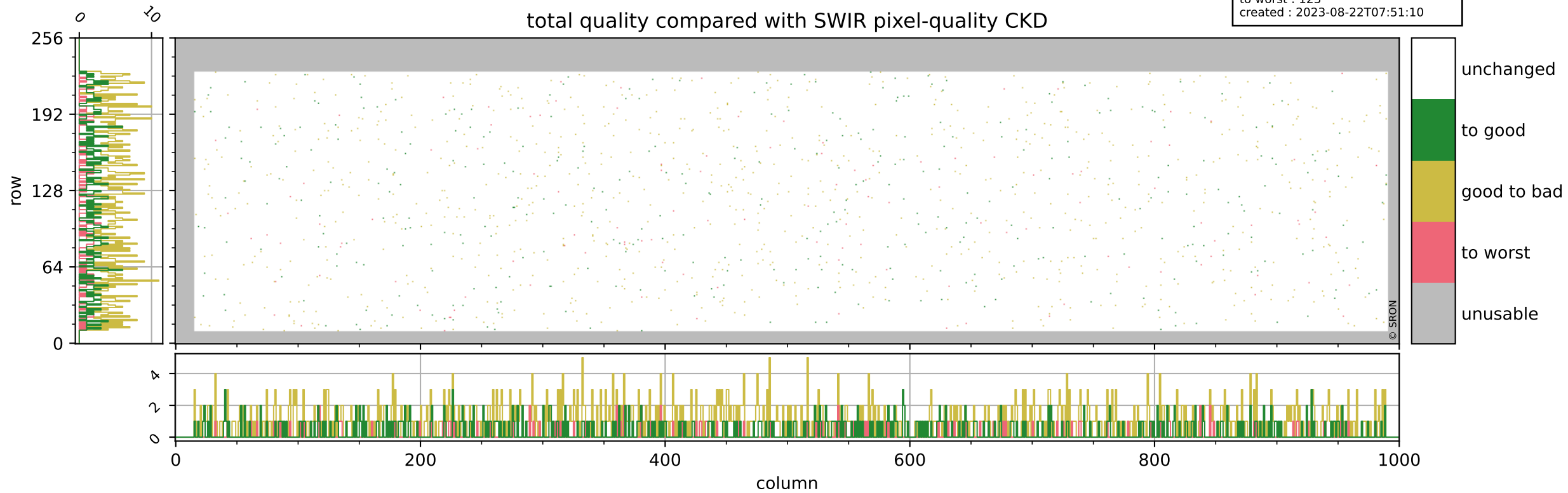
## pixel-quality map (noise average)



# Tropomi SWIR pixel quality (official)

orbits : 20 in [6382, 6427]  
coverage : 2019-01-06 / 2019-01-09  
to good : 362  
good to bad : 853  
to worst : 123  
created : 2023-08-22T07:51:10

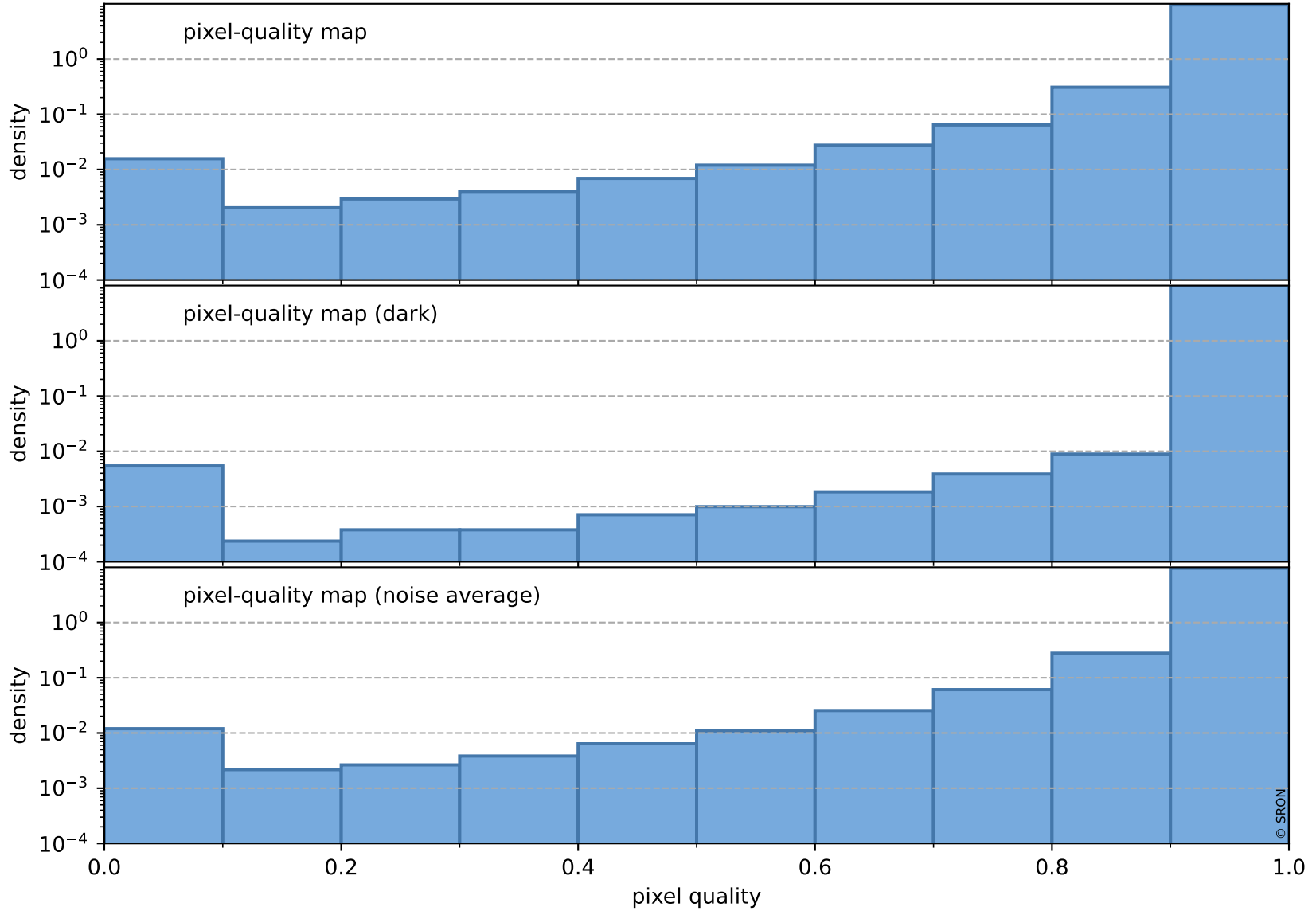
## total quality compared with SWIR pixel-quality CKD



# Tropomi SWIR pixel quality (official)

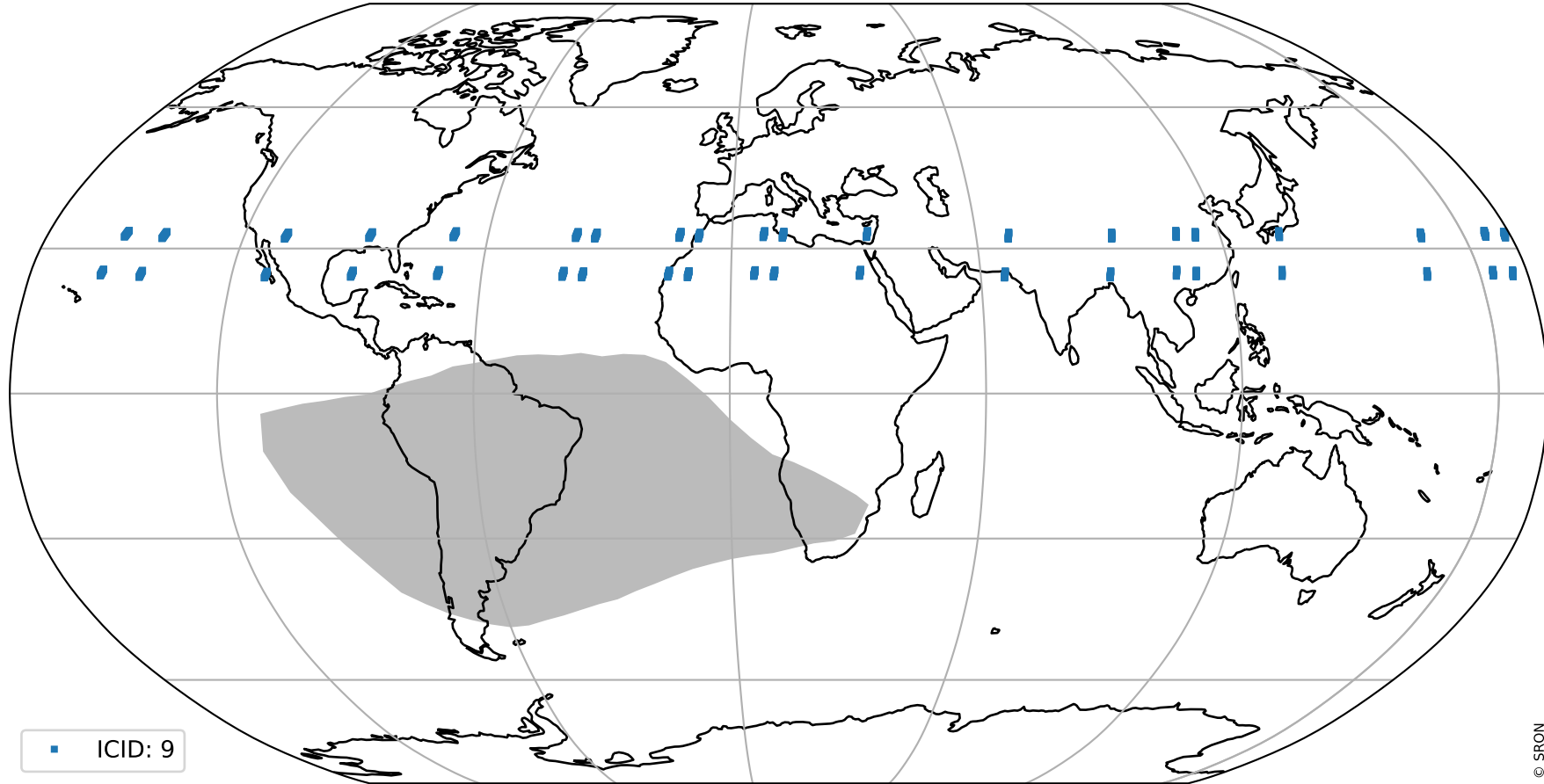
orbits : 20 in [6382, 6427]  
coverage : 2019-01-06 / 2019-01-09  
created : 2023-08-22T07:51:10

## Histograms of pixel-quality



# Tropomi SWIR pixel quality (official) ground-tracks of Sentinel-5P

orbits : 20 in [6382, 6427]  
coverage : 2019-01-06 / 2019-01-09  
created : 2023-08-22T07:51:10



# Tropomi SWIR pixel quality (official)

orbits : [2827, 6427]  
coverage : 2018-04-30 / 2019-01-09  
created : 2023-08-22T07:51:11

## trend of pixel quality & temperatures

