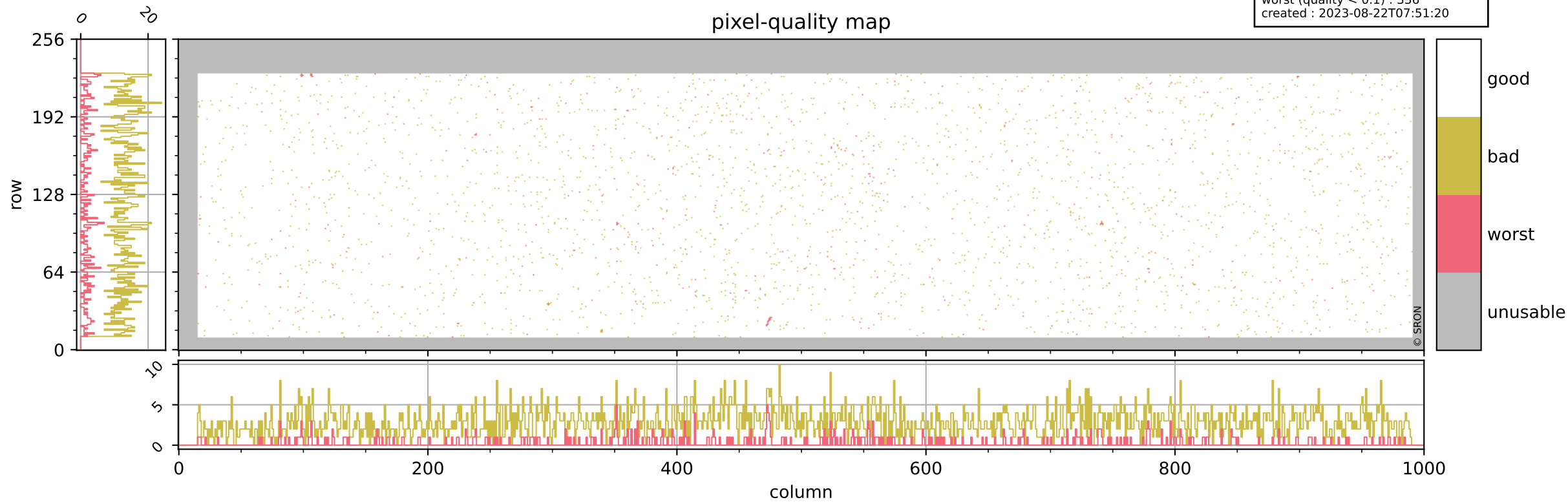


Tropomi SWIR pixel quality (official)

orbits : 19 in [6457, 6502]
coverage : 2019-01-11 / 2019-01-14
bad (quality < 0.8) : 2845
worst (quality < 0.1) : 336
created : 2023-08-22T07:51:20

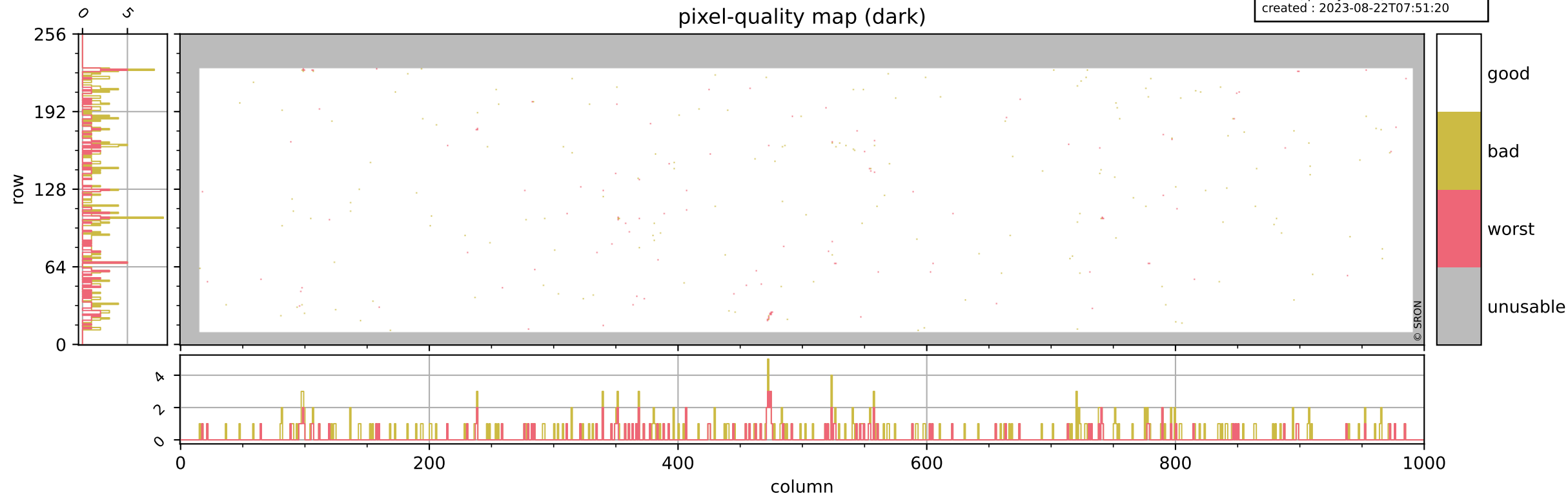
pixel-quality map



Tropomi SWIR pixel quality (official)

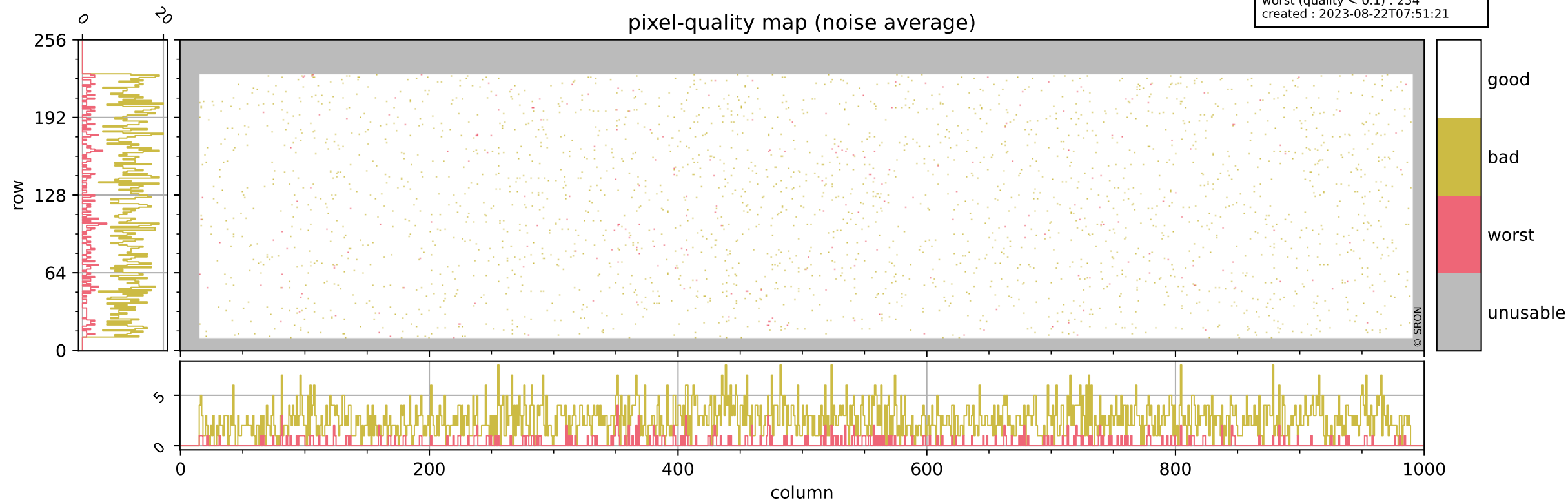
orbits : 19 in [6457, 6502]
coverage : 2019-01-11 / 2019-01-14
bad (quality < 0.8) : 292
worst (quality < 0.1) : 115
created : 2023-08-22T07:51:20

pixel-quality map (dark)



Tropomi SWIR pixel quality (official)

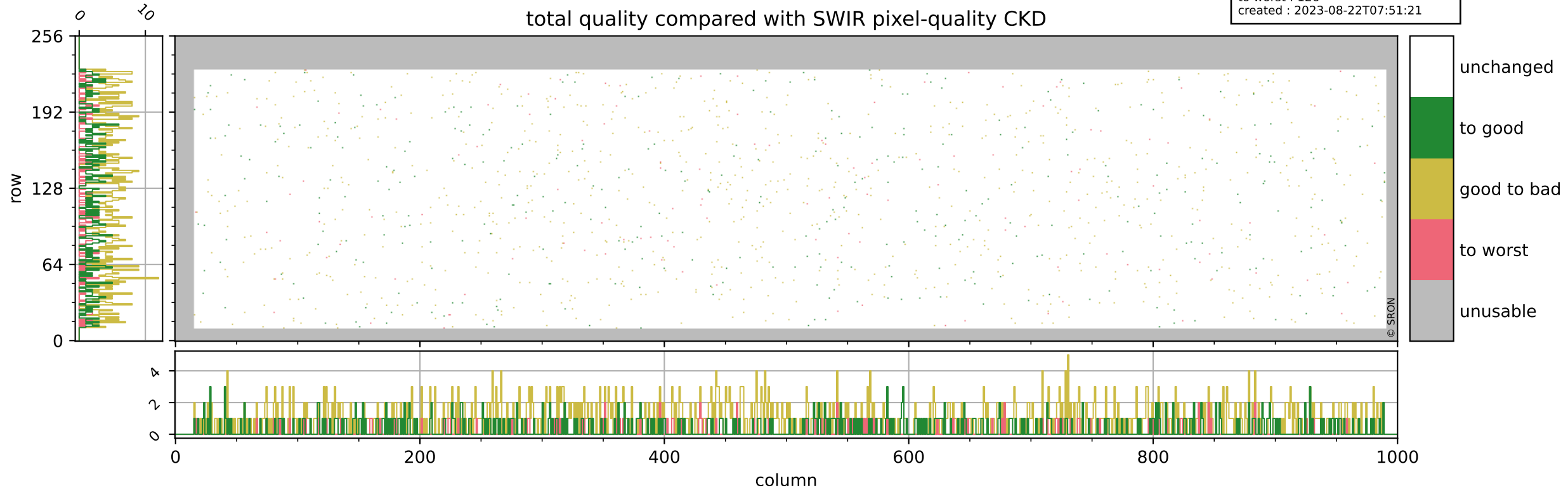
orbits : 19 in [6457, 6502]
coverage : 2019-01-11 / 2019-01-14
bad (quality < 0.8) : 2588
worst (quality < 0.1) : 254
created : 2023-08-22T07:51:21



Tropomi SWIR pixel quality (official)

orbits : 19 in [6457, 6502]
coverage : 2019-01-11 / 2019-01-14
to good : 357
good to bad : 838
to worst : 126
created : 2023-08-22T07:51:21

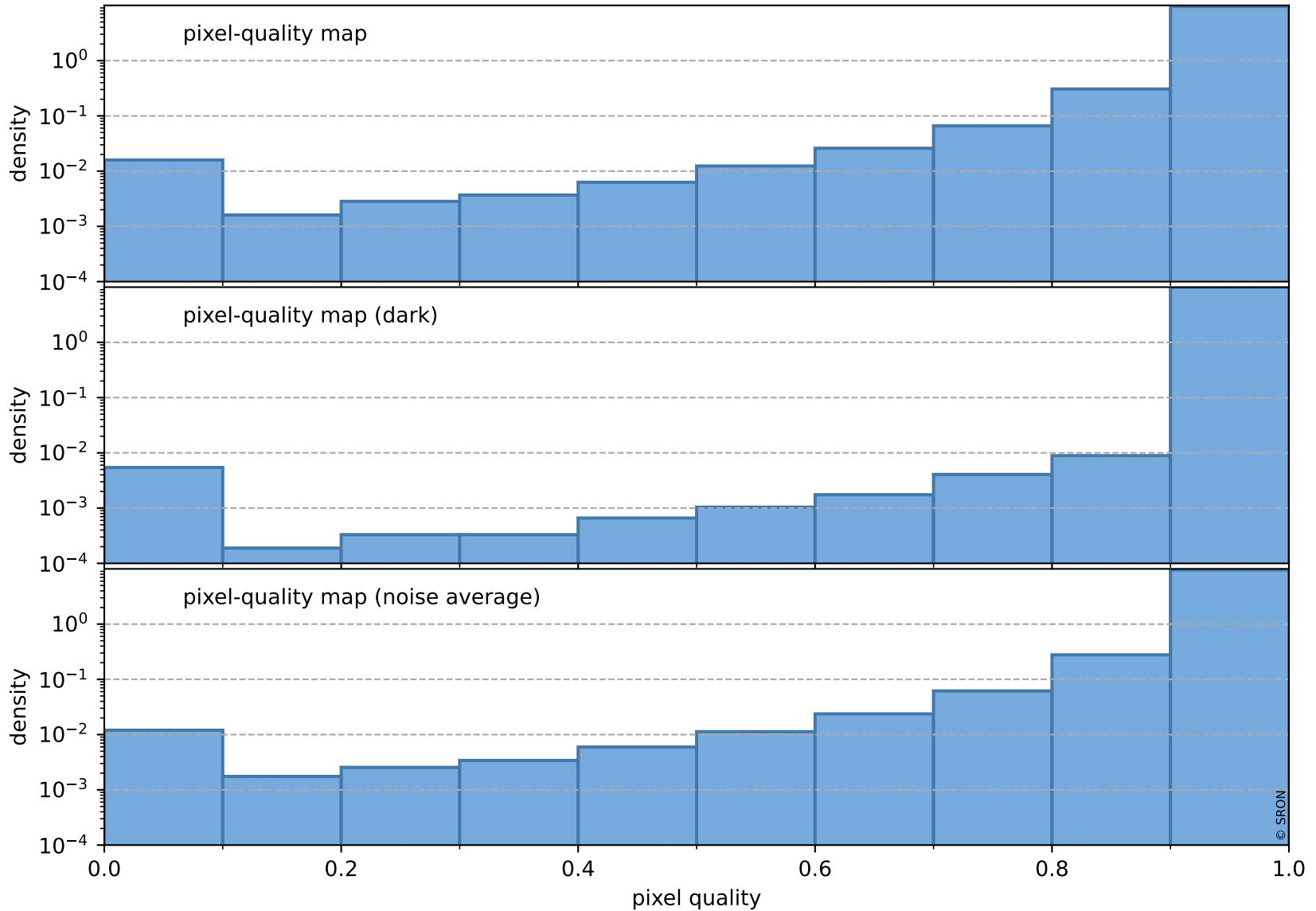
total quality compared with SWIR pixel-quality CKD



Tropomi SWIR pixel quality (official)

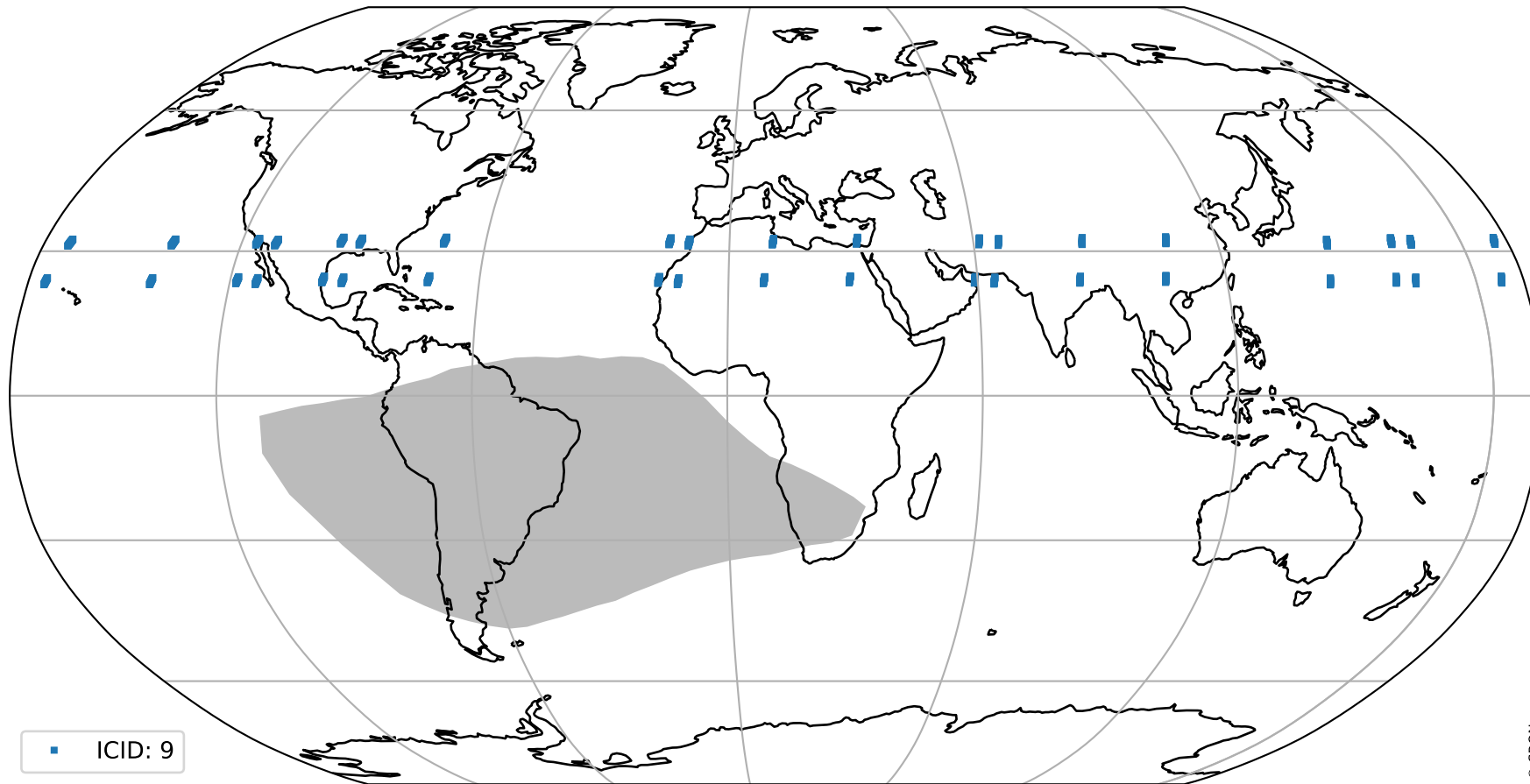
orbits : 19 in [6457, 6502]
coverage : 2019-01-11 / 2019-01-14
created : 2023-08-22T07:51:21

Histograms of pixel-quality



Tropomi SWIR pixel quality (official) ground-tracks of Sentinel-5P

orbits : 19 in [6457, 6502]
coverage : 2019-01-11 / 2019-01-14
created : 2023-08-22T07:51:21



Tropomi SWIR pixel quality (official)

orbits : [2827, 6502]
coverage : 2018-04-30 / 2019-01-14
created : 2023-08-22T07:51:22

trend of pixel quality & temperatures

