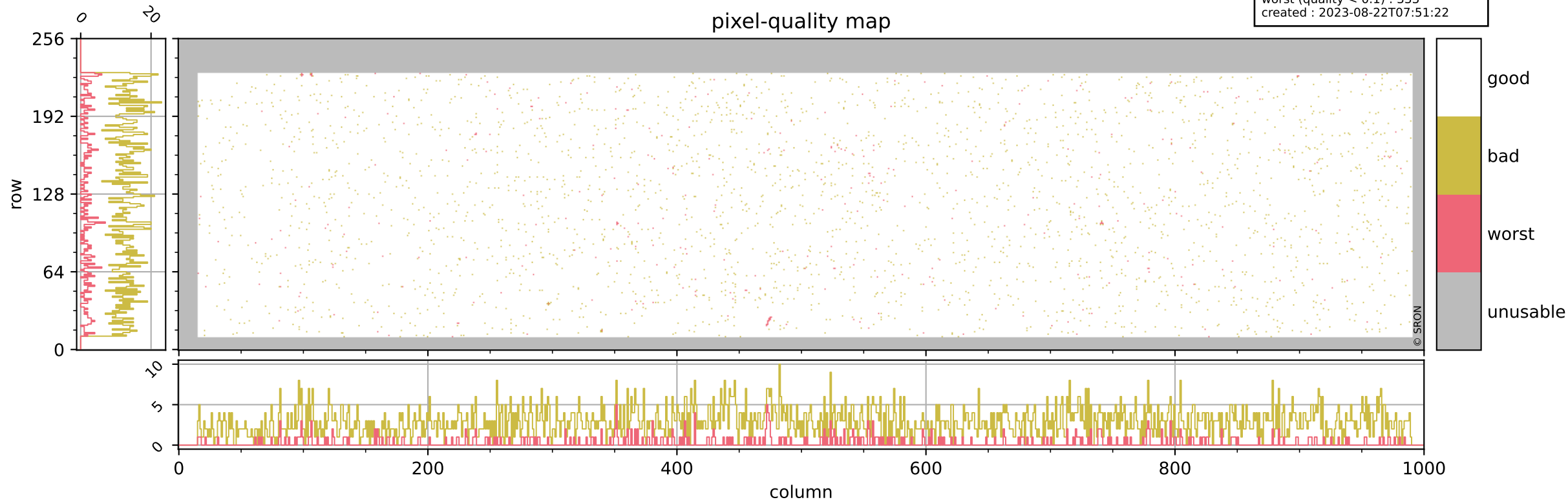


Tropomi SWIR pixel quality (official)

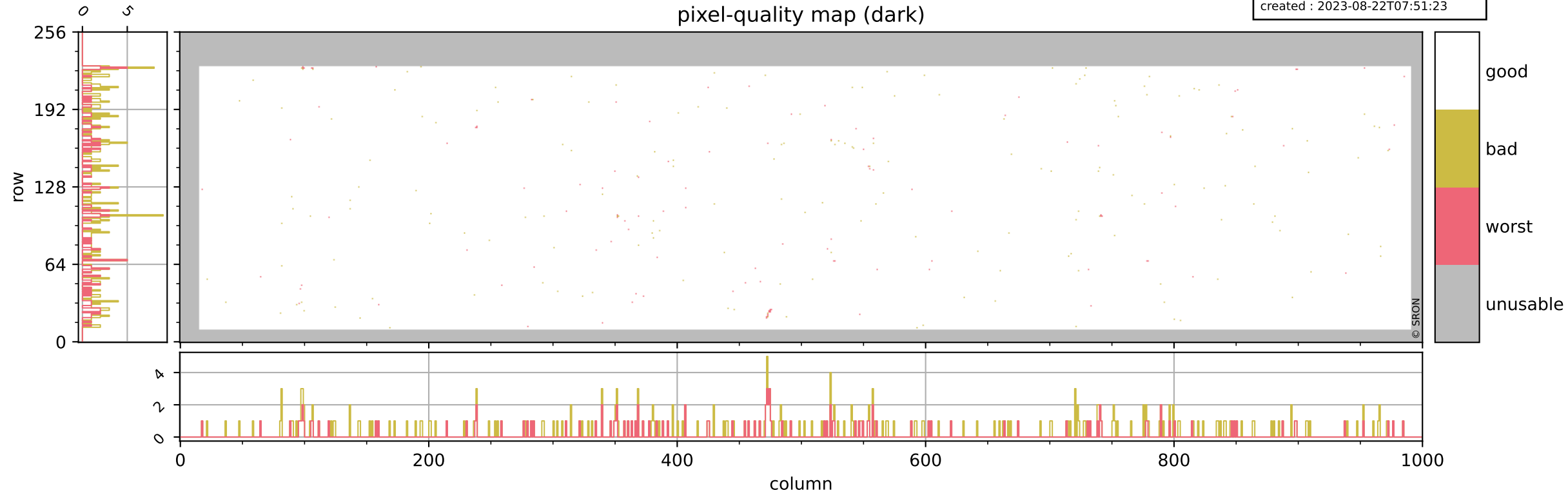
orbits : 20 in [6472, 6517]
coverage : 2019-01-12 / 2019-01-15
bad (quality < 0.8) : 2862
worst (quality < 0.1) : 333
created : 2023-08-22T07:51:22

pixel-quality map



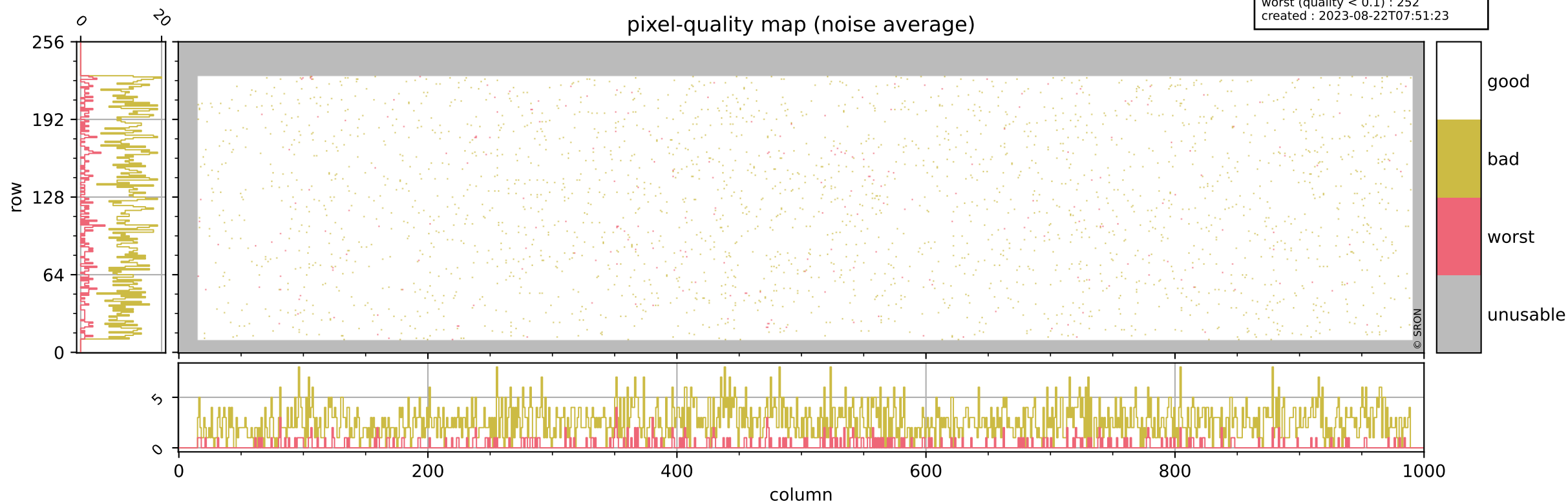
Tropomi SWIR pixel quality (official)

orbits : 20 in [6472, 6517]
coverage : 2019-01-12 / 2019-01-15
bad (quality < 0.8) : 291
worst (quality < 0.1) : 113
created : 2023-08-22T07:51:23



Tropomi SWIR pixel quality (official)

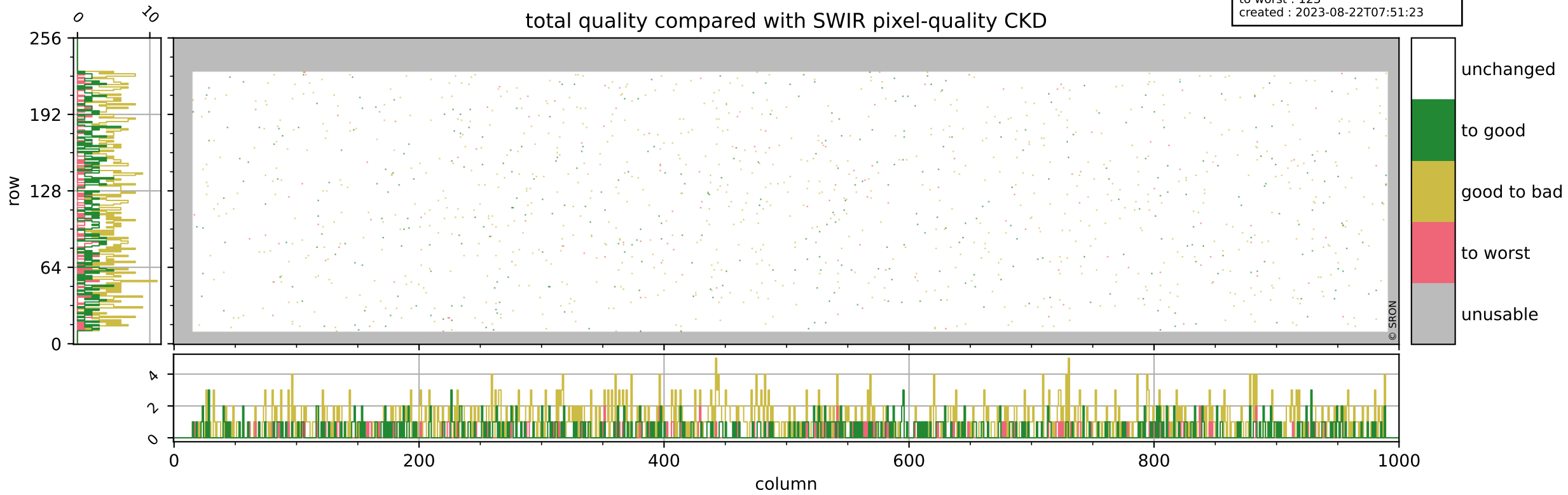
orbits : 20 in [6472, 6517]
coverage : 2019-01-12 / 2019-01-15
bad (quality < 0.8) : 2601
worst (quality < 0.1) : 252
created : 2023-08-22T07:51:23



Tropomi SWIR pixel quality (official)

orbits : 20 in [6472, 6517]
coverage : 2019-01-12 / 2019-01-15
to good : 364
good to bad : 861
to worst : 123
created : 2023-08-22T07:51:23

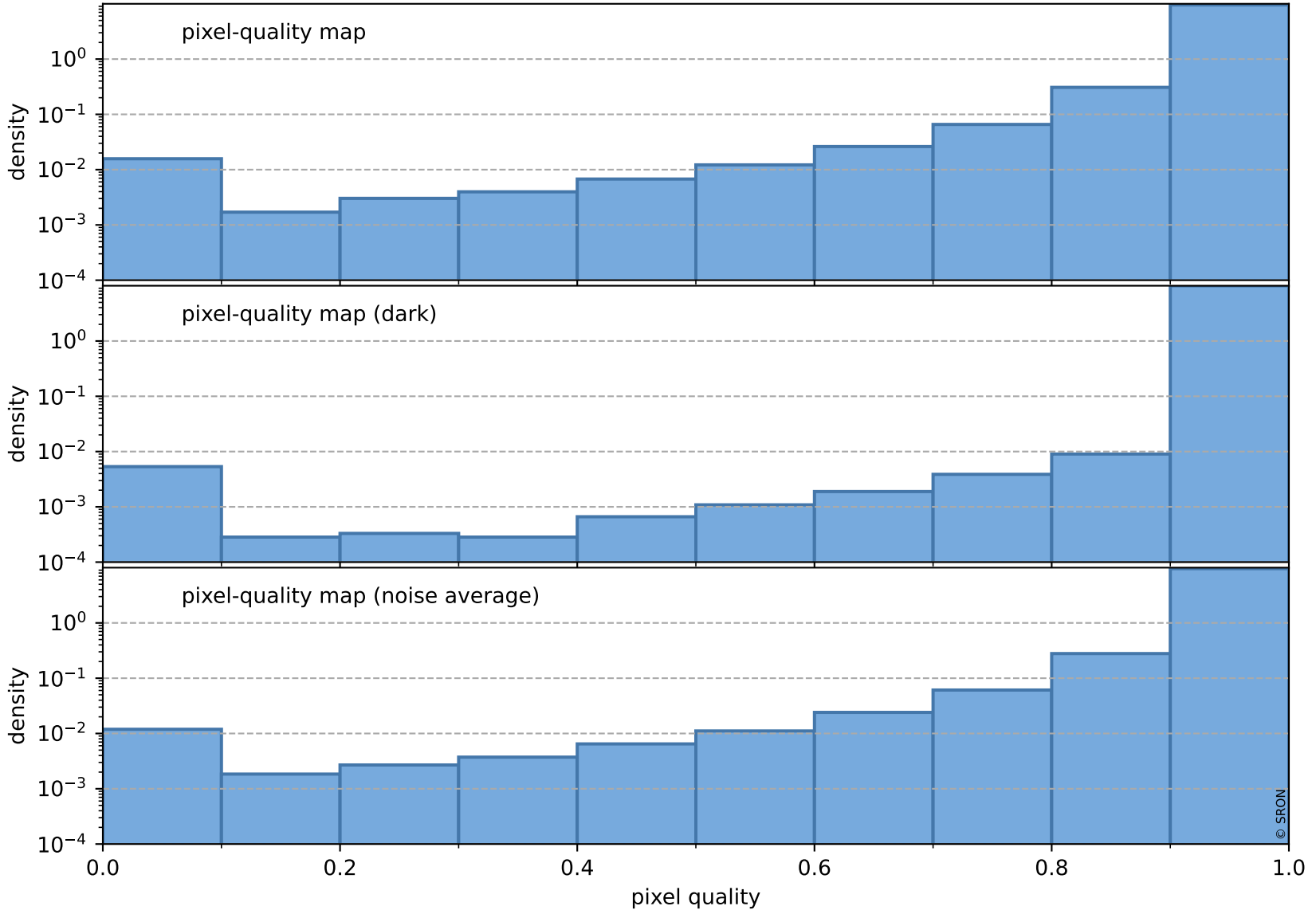
total quality compared with SWIR pixel-quality CKD



Tropomi SWIR pixel quality (official)

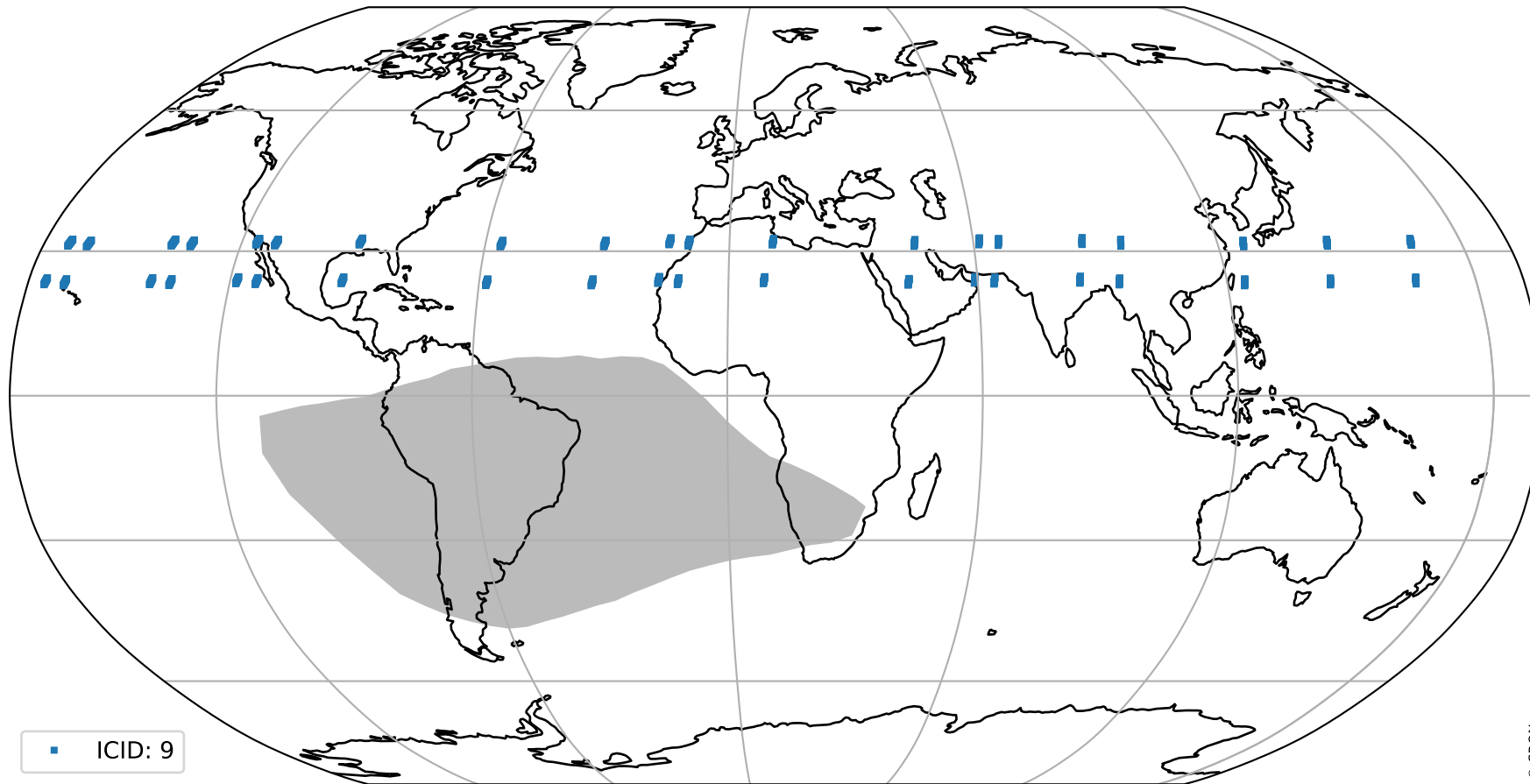
orbits : 20 in [6472, 6517]
coverage : 2019-01-12 / 2019-01-15
created : 2023-08-22T07:51:23

Histograms of pixel-quality



Tropomi SWIR pixel quality (official) ground-tracks of Sentinel-5P

orbits : 20 in [6472, 6517]
coverage : 2019-01-12 / 2019-01-15
created : 2023-08-22T07:51:24



Tropomi SWIR pixel quality (official)

orbits : [2827, 6517]
coverage : 2018-04-30 / 2019-01-15
created : 2023-08-22T07:51:24

trend of pixel quality & temperatures

