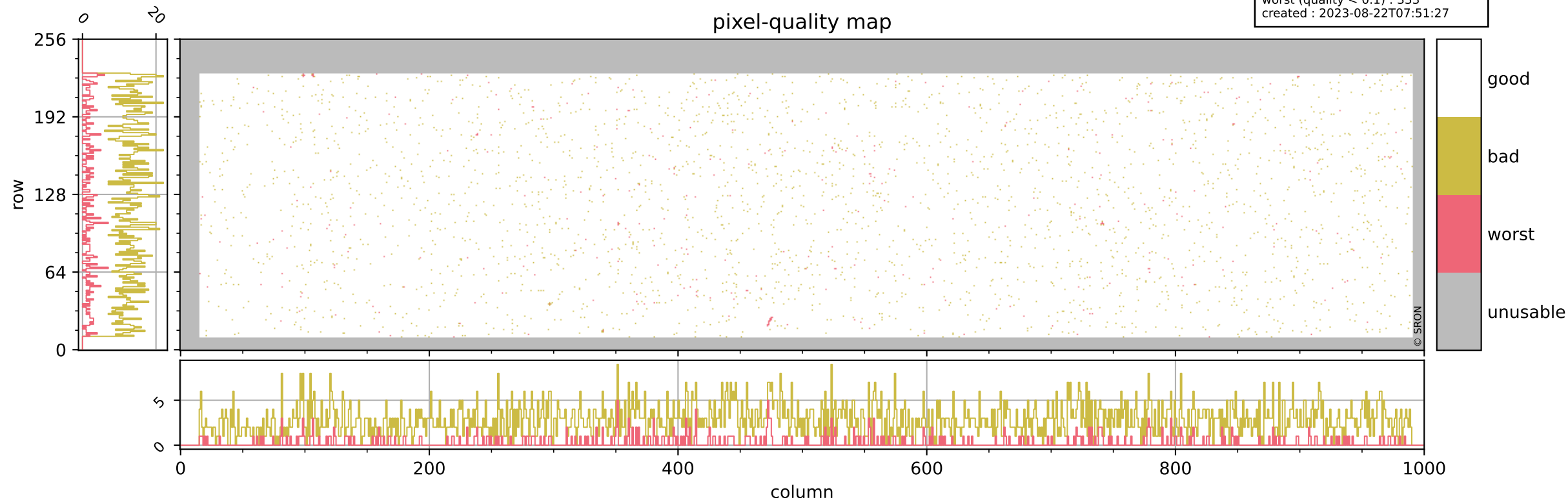


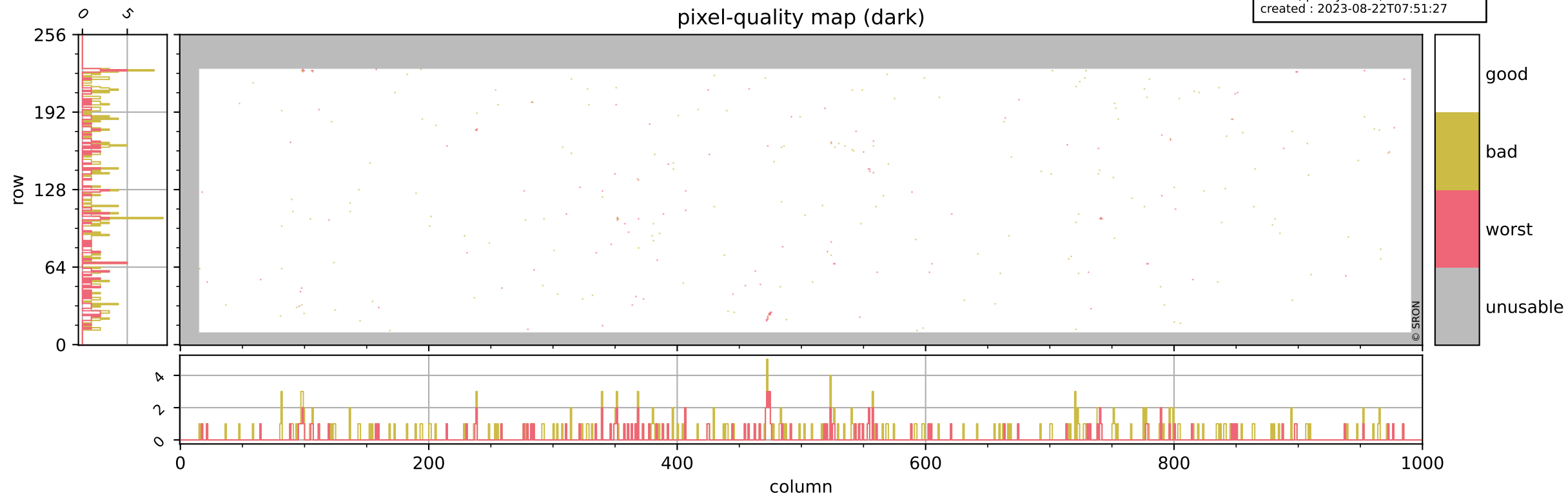
Tropomi SWIR pixel quality (official)

orbits : 20 in [6502, 6547]
coverage : 2019-01-14 / 2019-01-17
bad (quality < 0.8) : 2852
worst (quality < 0.1) : 333
created : 2023-08-22T07:51:27



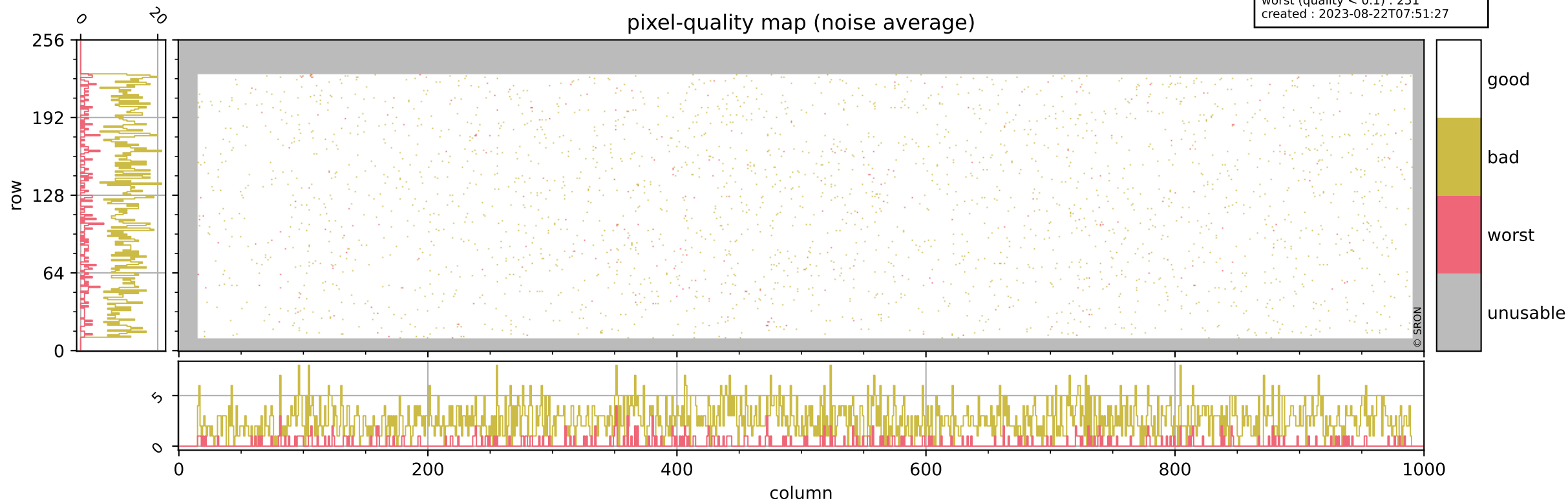
Tropomi SWIR pixel quality (official)

orbits : 20 in [6502, 6547]
coverage : 2019-01-14 / 2019-01-17
bad (quality < 0.8) : 293
worst (quality < 0.1) : 115
created : 2023-08-22T07:51:27



Tropomi SWIR pixel quality (official)

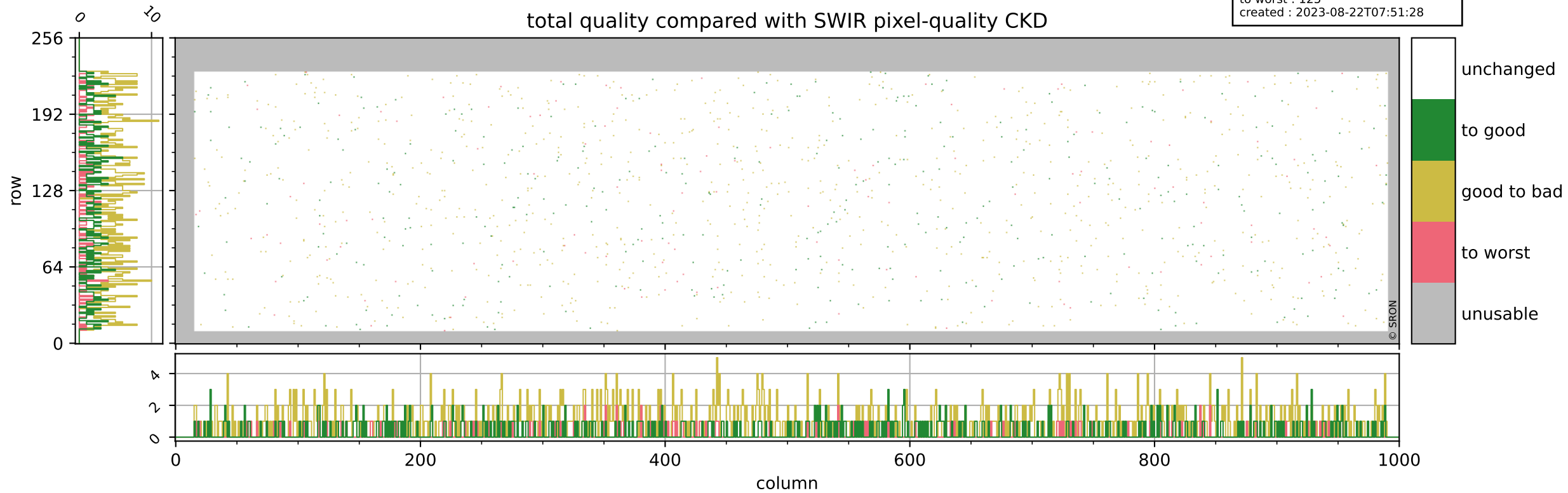
orbits : 20 in [6502, 6547]
coverage : 2019-01-14 / 2019-01-17
bad (quality < 0.8) : 2595
worst (quality < 0.1) : 251
created : 2023-08-22T07:51:27



Tropomi SWIR pixel quality (official)

orbits : 20 in [6502, 6547]
coverage : 2019-01-14 / 2019-01-17
to good : 360
good to bad : 841
to worst : 125
created : 2023-08-22T07:51:28

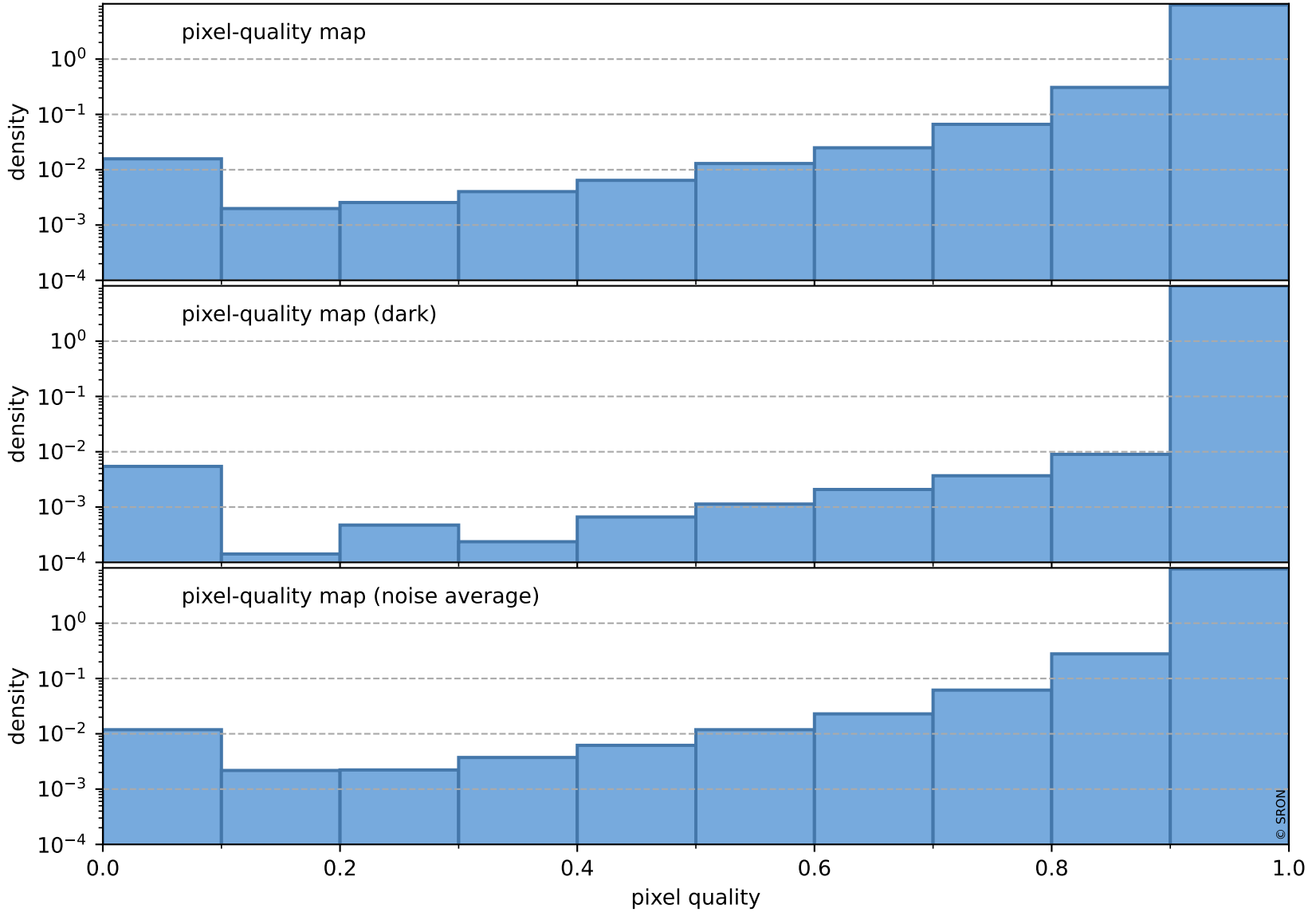
total quality compared with SWIR pixel-quality CKD



Tropomi SWIR pixel quality (official)

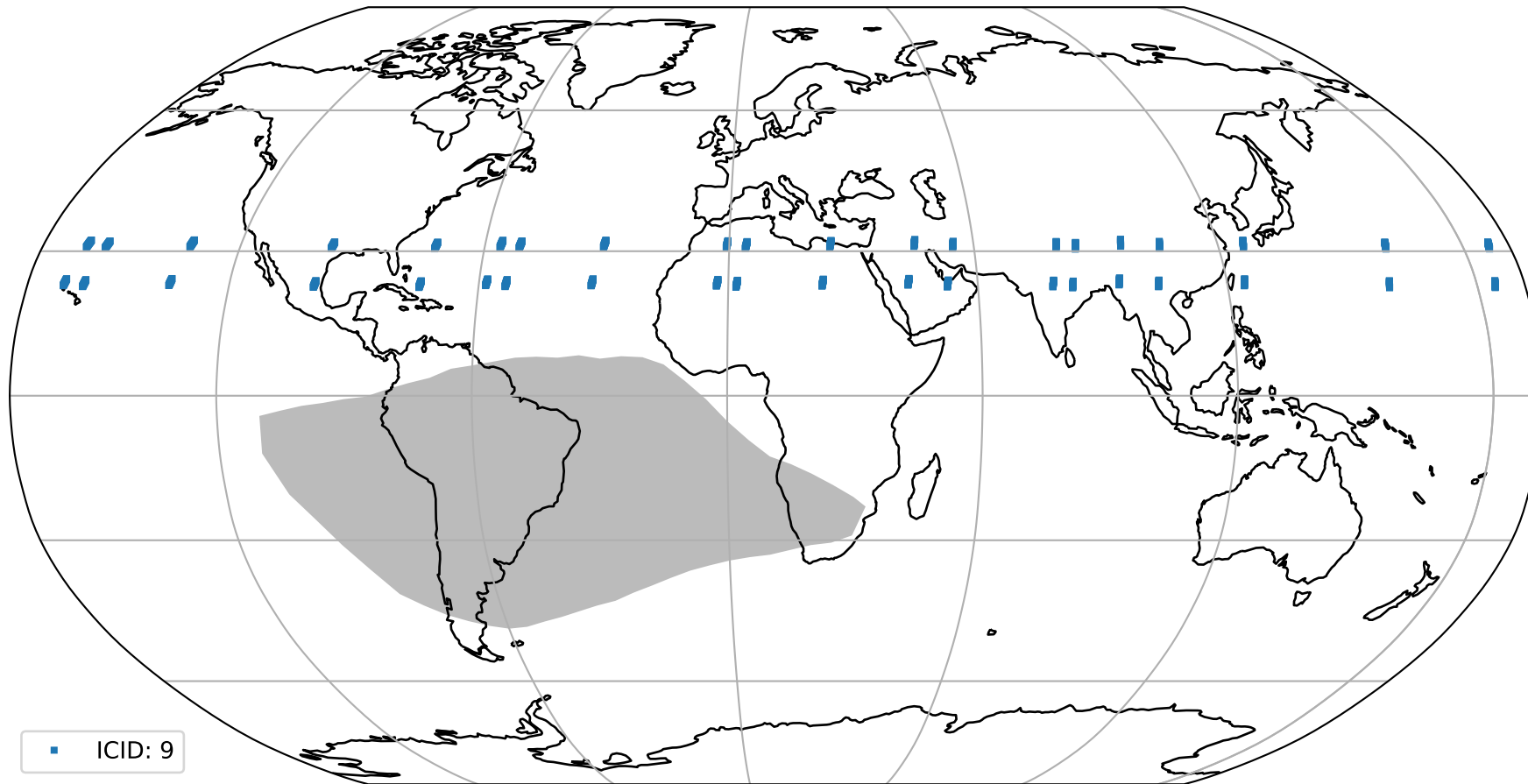
orbits : 20 in [6502, 6547]
coverage : 2019-01-14 / 2019-01-17
created : 2023-08-22T07:51:28

Histograms of pixel-quality



Tropomi SWIR pixel quality (official) ground-tracks of Sentinel-5P

orbits : 20 in [6502, 6547]
coverage : 2019-01-14 / 2019-01-17
created : 2023-08-22T07:51:28



Tropomi SWIR pixel quality (official)

orbits : [2827, 6547]
coverage : 2018-04-30 / 2019-01-17
created : 2023-08-22T07:51:28

trend of pixel quality & temperatures

