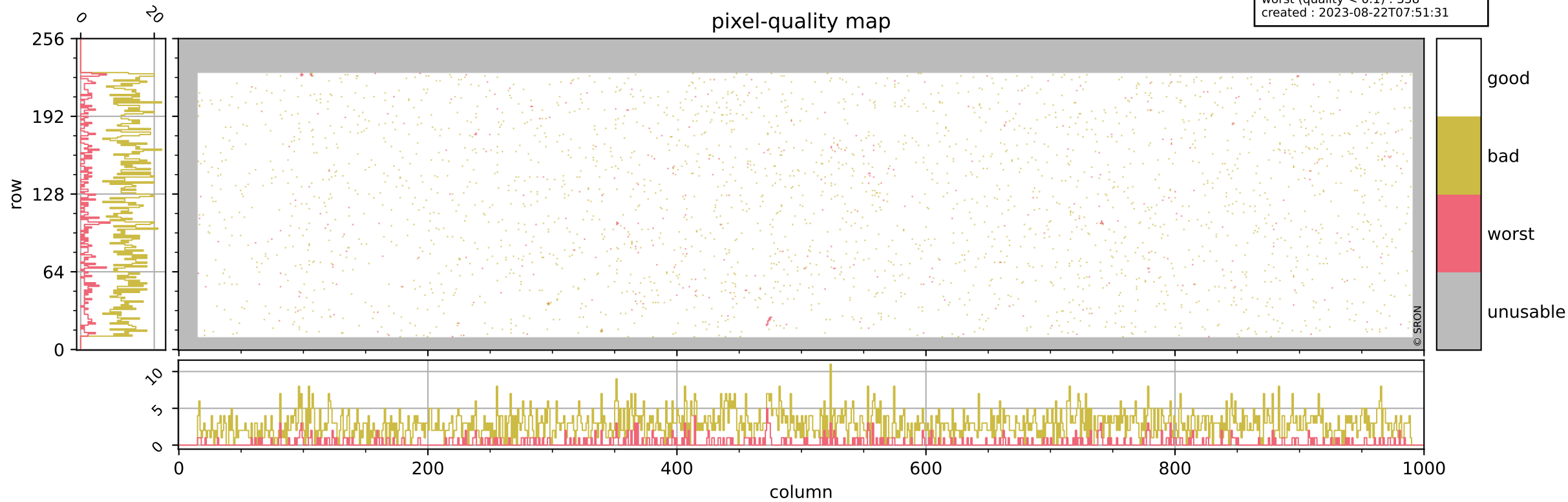


Tropomi SWIR pixel quality (official)

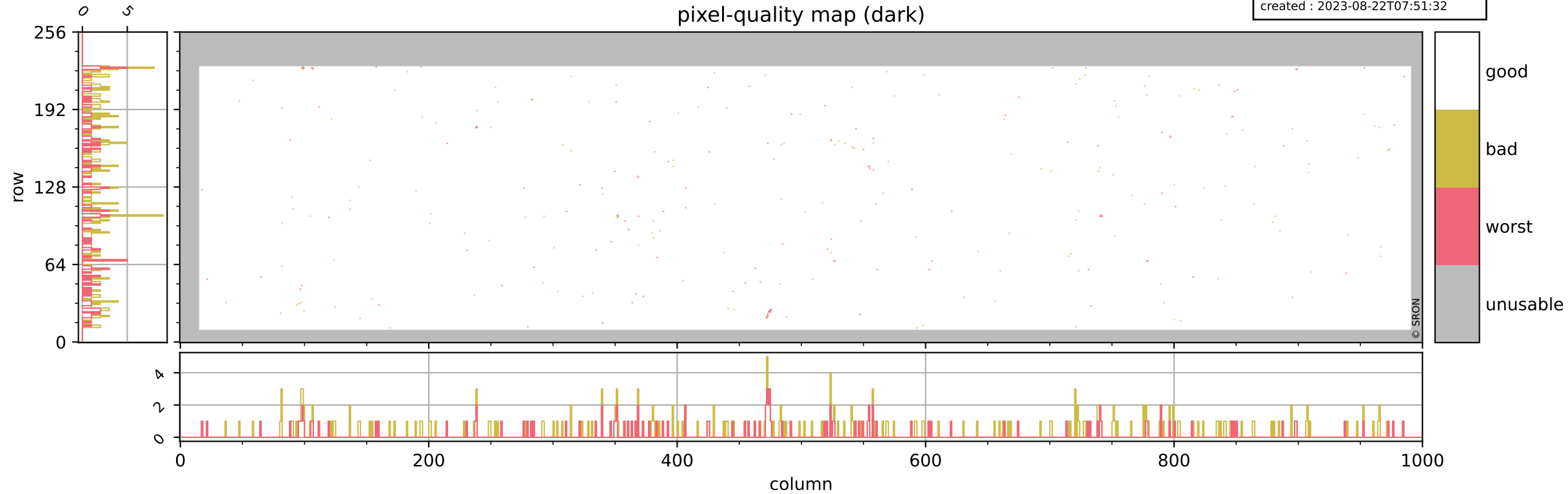
orbits : 20 in [6532, 6577]
coverage : 2019-01-16 / 2019-01-19
bad (quality < 0.8) : 2840
worst (quality < 0.1) : 338
created : 2023-08-22T07:51:31

pixel-quality map



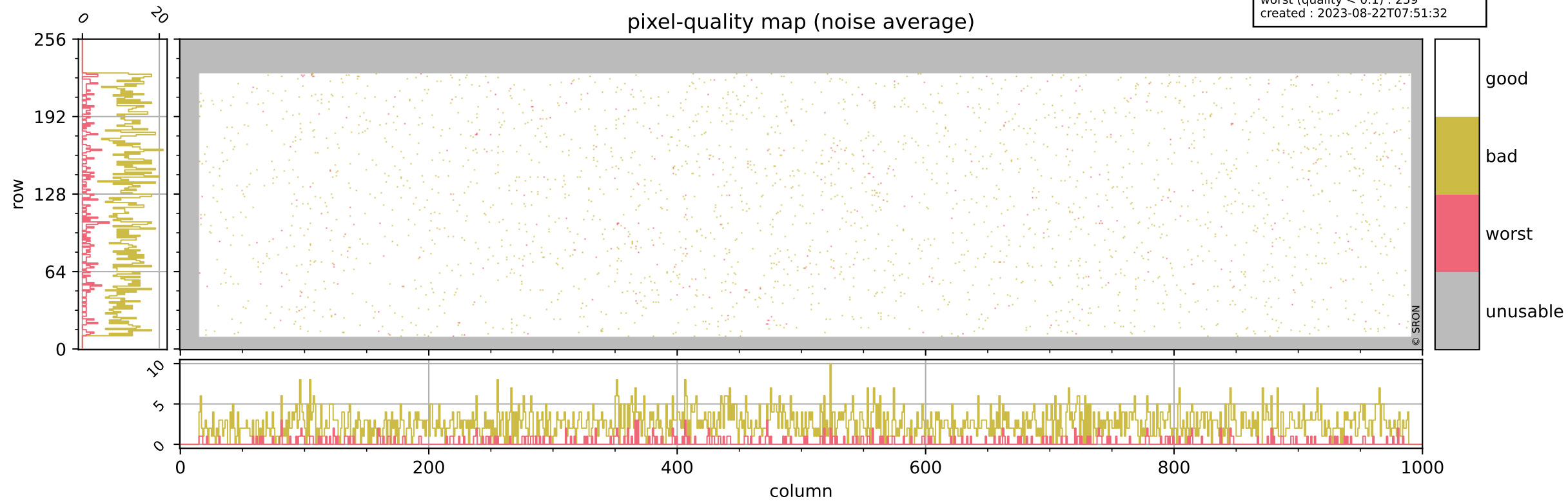
Tropomi SWIR pixel quality (official)

orbits : 20 in [6532, 6577]
coverage : 2019-01-16 / 2019-01-19
bad (quality < 0.8) : 292
worst (quality < 0.1) : 115
created : 2023-08-22T07:51:32



Tropomi SWIR pixel quality (official)

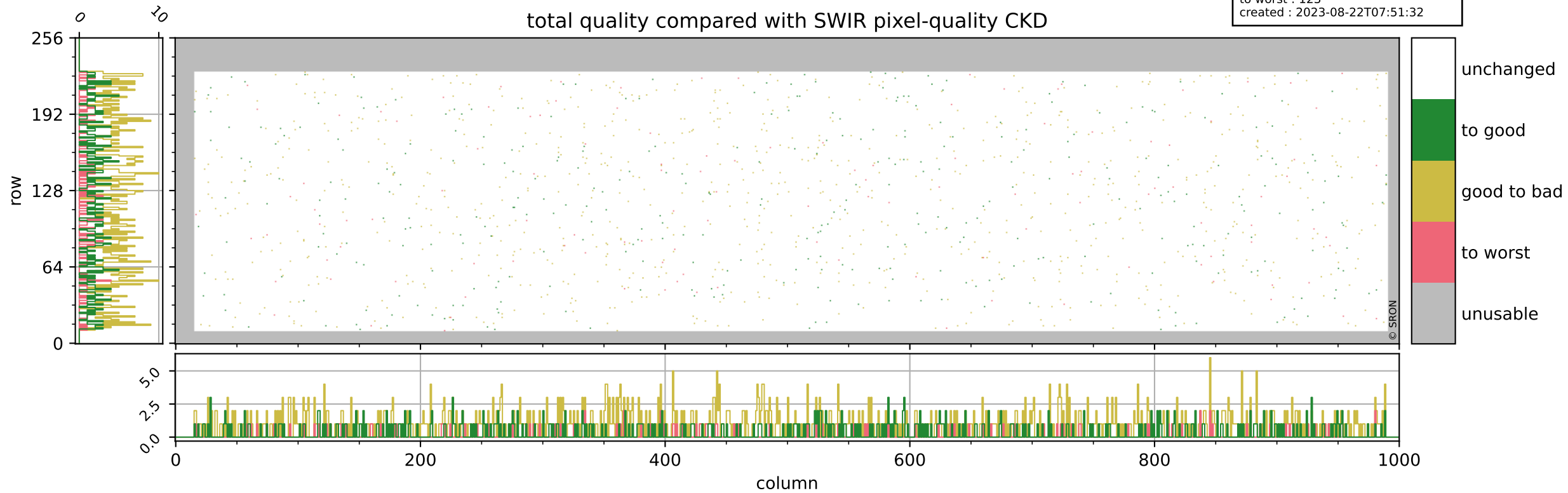
orbits : 20 in [6532, 6577]
coverage : 2019-01-16 / 2019-01-19
bad (quality < 0.8) : 2586
worst (quality < 0.1) : 259
created : 2023-08-22T07:51:32



Tropomi SWIR pixel quality (official)

orbits : 20 in [6532, 6577]
coverage : 2019-01-16 / 2019-01-19
to good : 355
good to bad : 825
to worst : 123
created : 2023-08-22T07:51:32

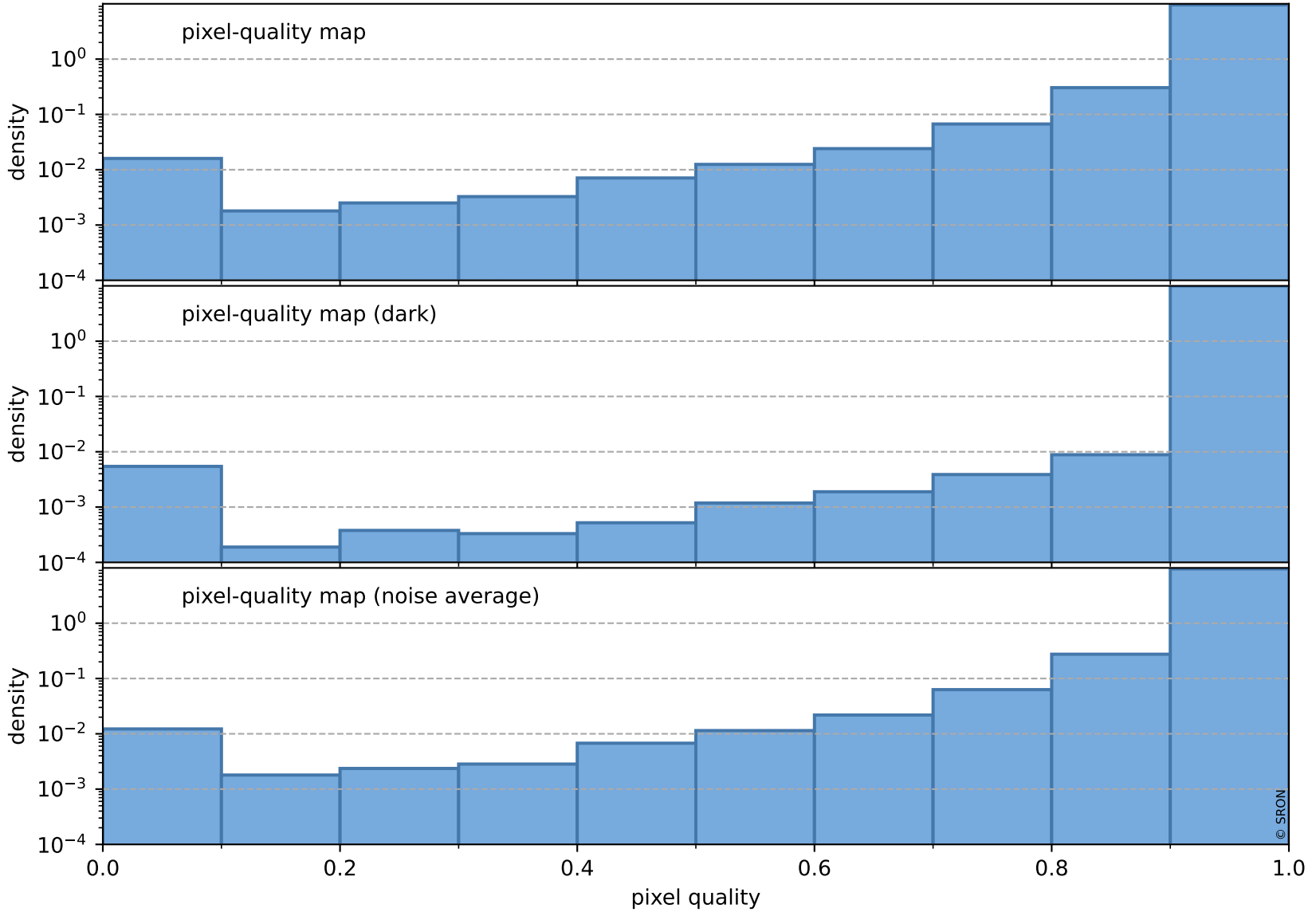
total quality compared with SWIR pixel-quality CKD



Tropomi SWIR pixel quality (official)

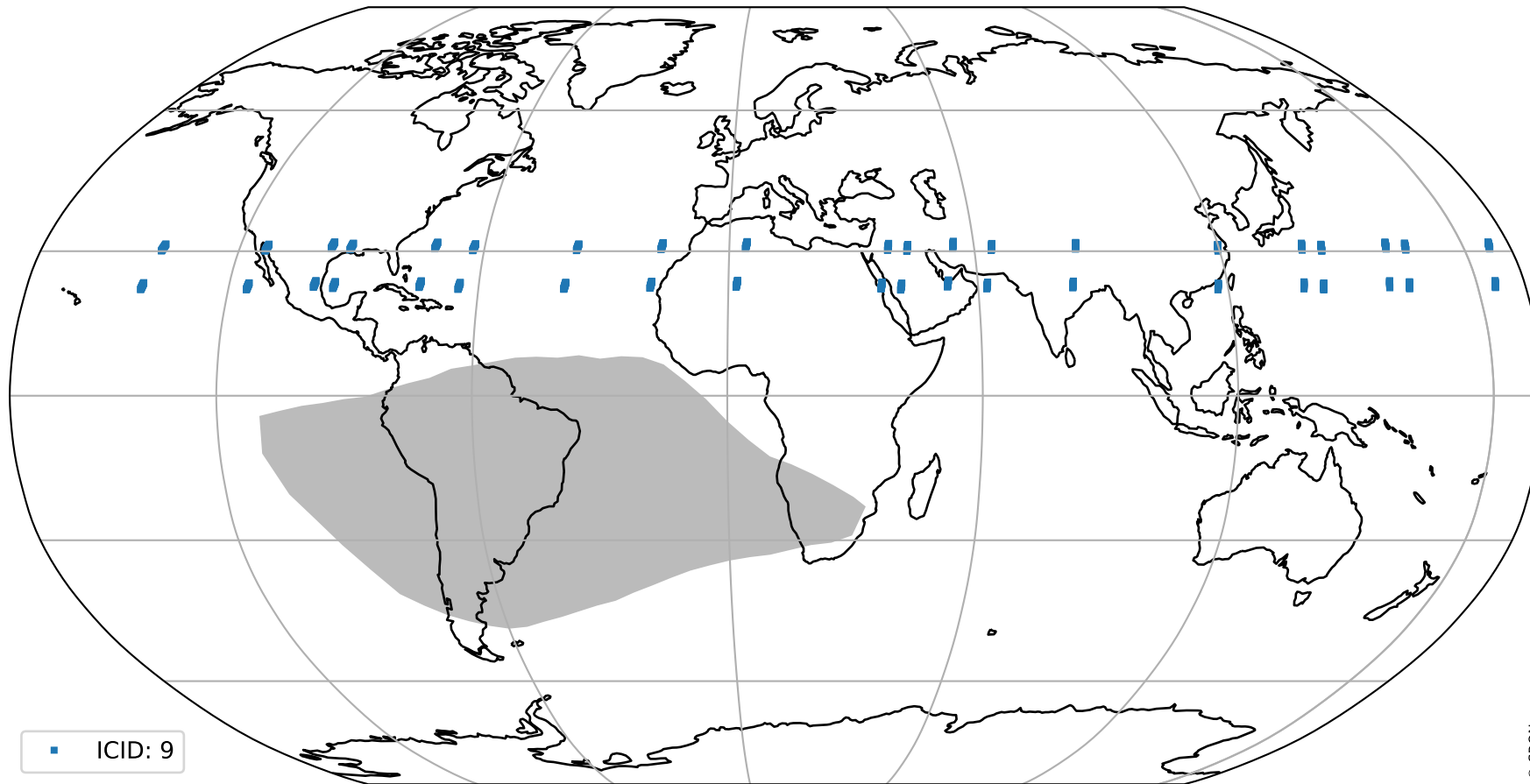
orbits : 20 in [6532, 6577]
coverage : 2019-01-16 / 2019-01-19
created : 2023-08-22T07:51:32

Histograms of pixel-quality



Tropomi SWIR pixel quality (official) ground-tracks of Sentinel-5P

orbits : 20 in [6532, 6577]
coverage : 2019-01-16 / 2019-01-19
created : 2023-08-22T07:51:33



Tropomi SWIR pixel quality (official)

orbits : [2827, 6577]
coverage : 2018-04-30 / 2019-01-19
created : 2023-08-22T07:51:33

trend of pixel quality & temperatures

