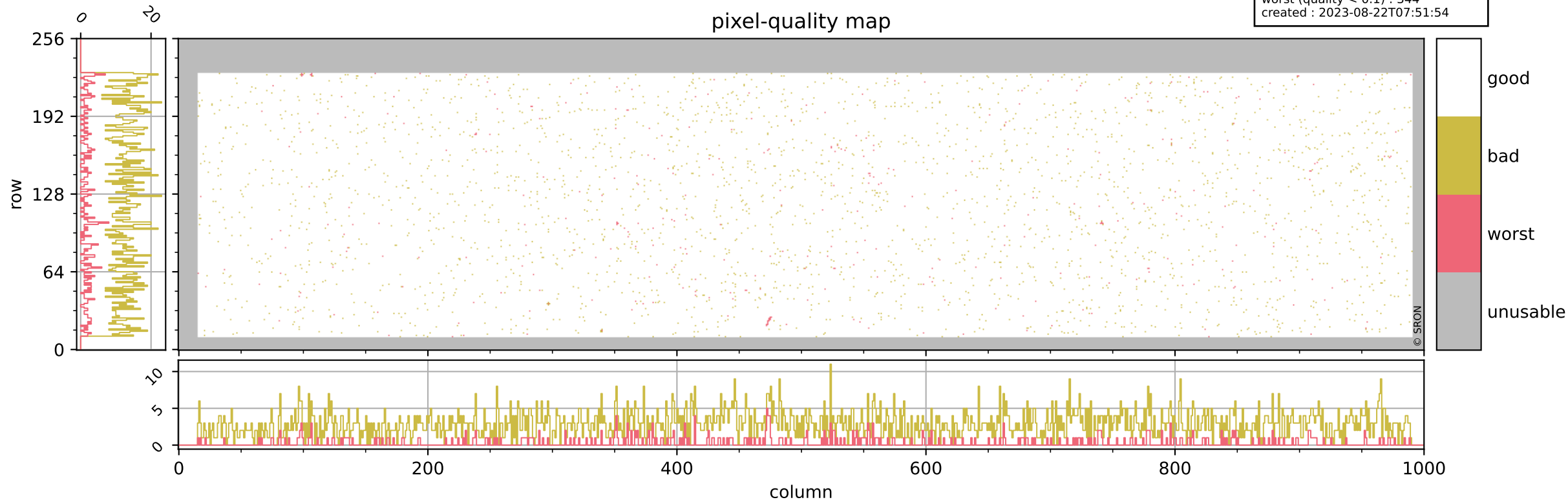


# Tropomi SWIR pixel quality (official)

orbits : 20 in [6682, 6727]  
coverage : 2019-01-27 / 2019-01-30  
bad (quality < 0.8) : 2846  
worst (quality < 0.1) : 344  
created : 2023-08-22T07:51:54

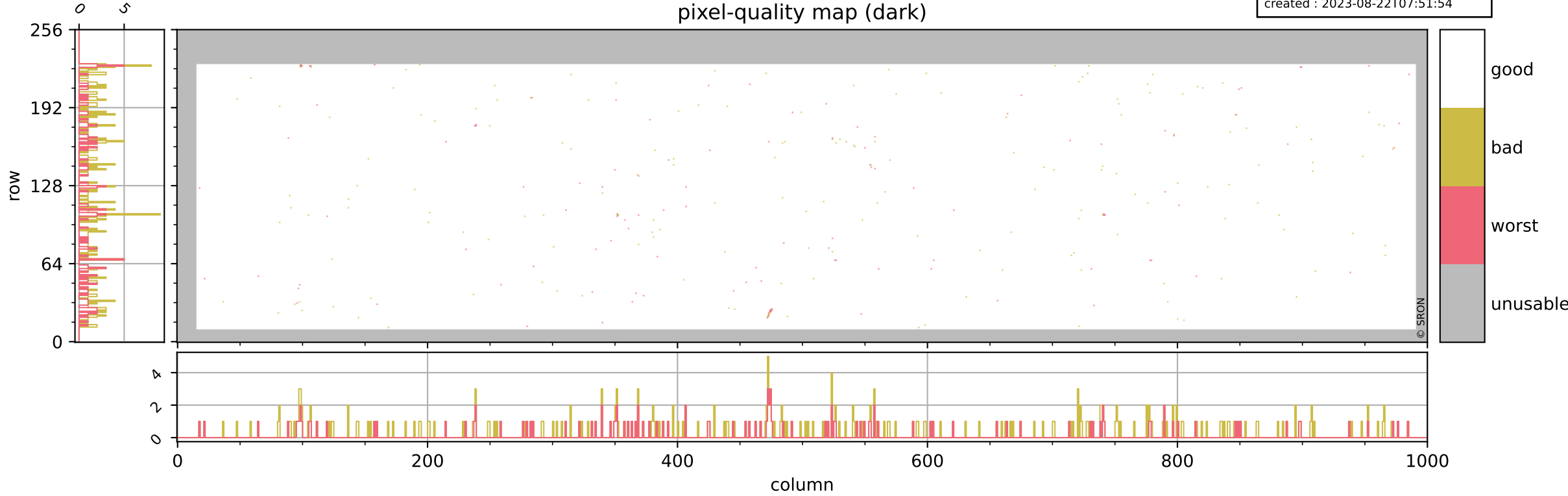
## pixel-quality map



# Tropomi SWIR pixel quality (official)

orbits : 20 in [6682, 6727]  
coverage : 2019-01-27 / 2019-01-30  
bad (quality < 0.8) : 293  
worst (quality < 0.1) : 115  
created : 2023-08-22T07:51:54

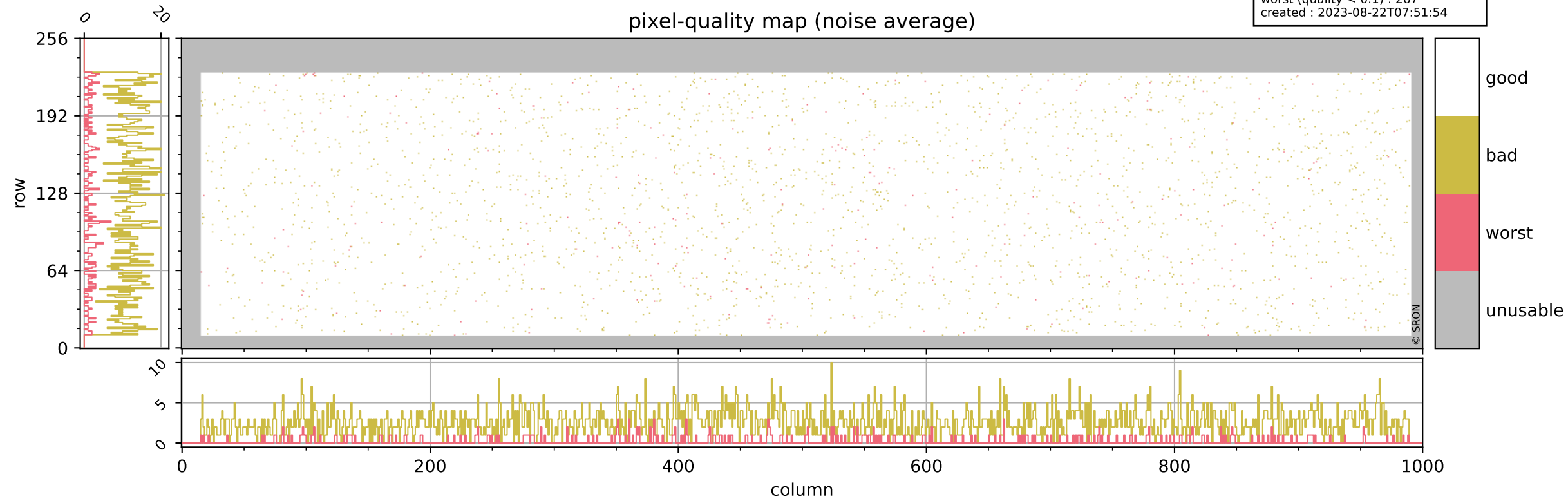
## pixel-quality map (dark)



# Tropomi SWIR pixel quality (official)

orbits : 20 in [6682, 6727]  
coverage : 2019-01-27 / 2019-01-30  
bad (quality < 0.8) : 2601  
worst (quality < 0.1) : 267  
created : 2023-08-22T07:51:54

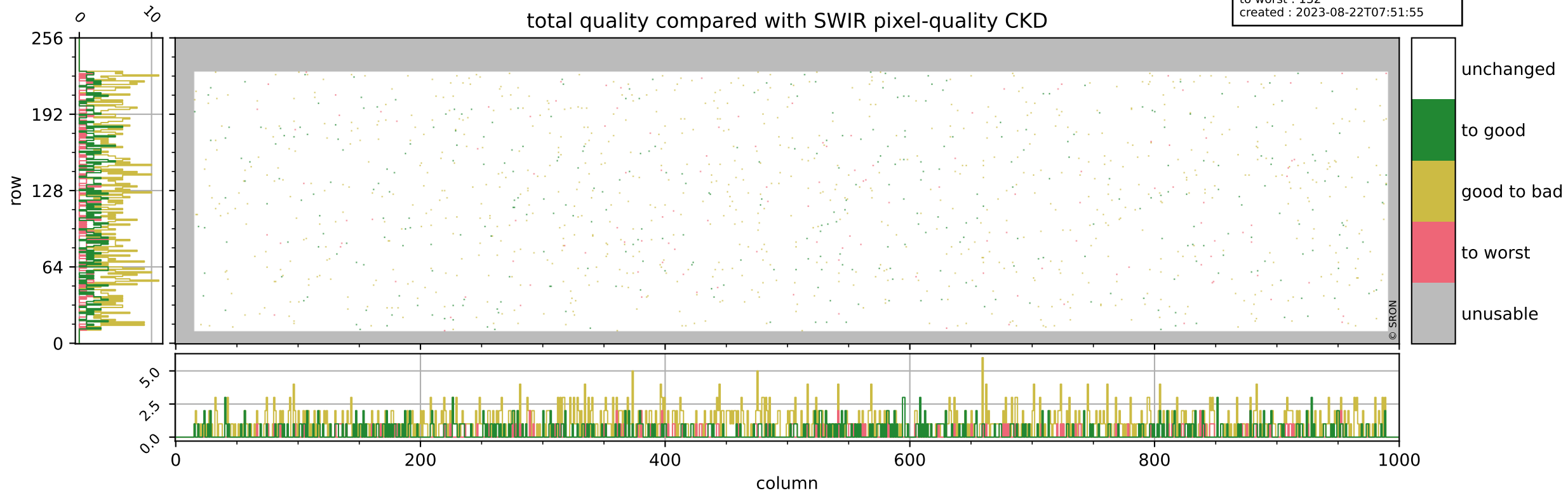
## pixel-quality map (noise average)



# Tropomi SWIR pixel quality (official)

orbits : 20 in [6682, 6727]  
coverage : 2019-01-27 / 2019-01-30  
to good : 357  
good to bad : 823  
to worst : 132  
created : 2023-08-22T07:51:55

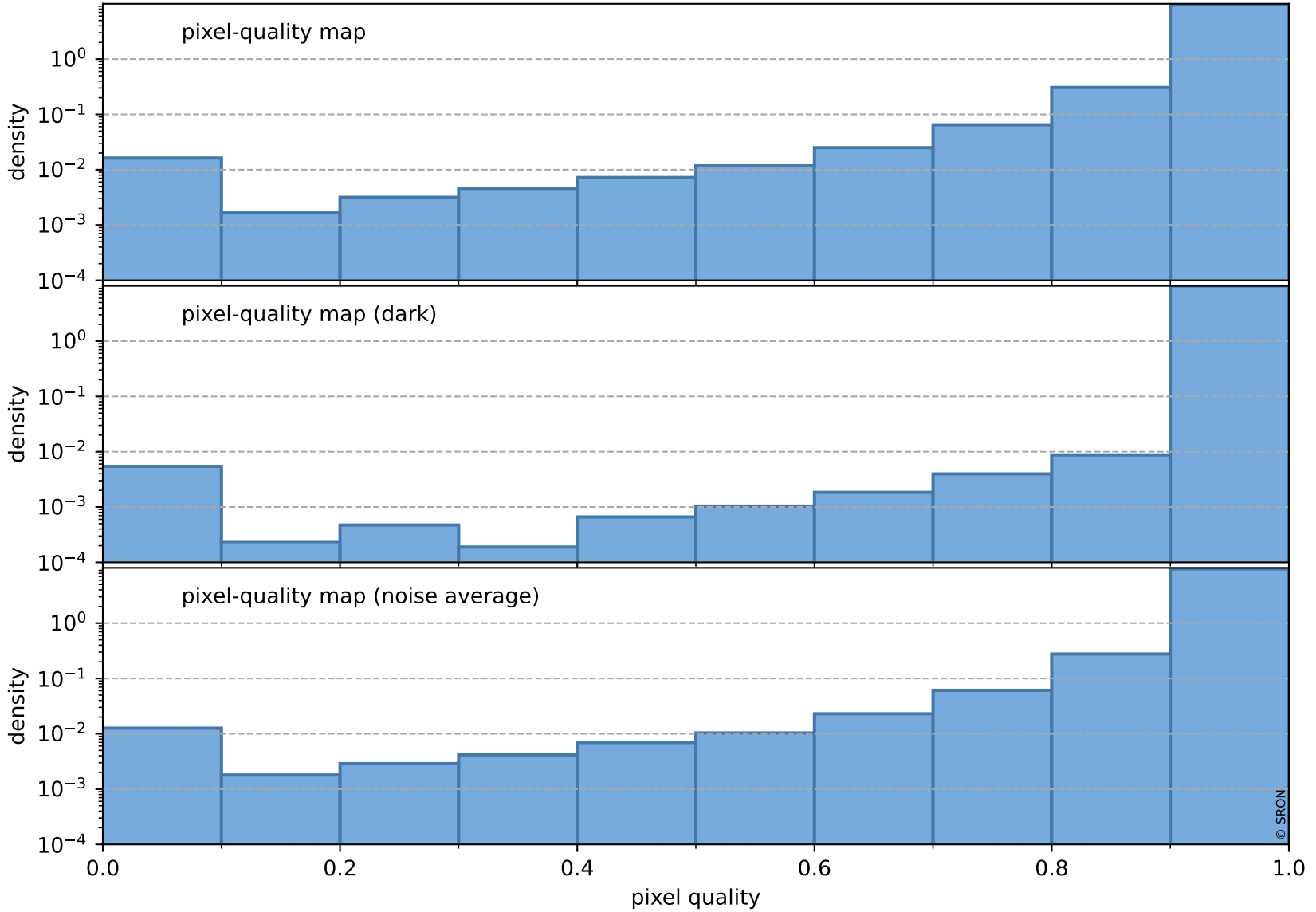
## total quality compared with SWIR pixel-quality CKD



# Tropomi SWIR pixel quality (official)

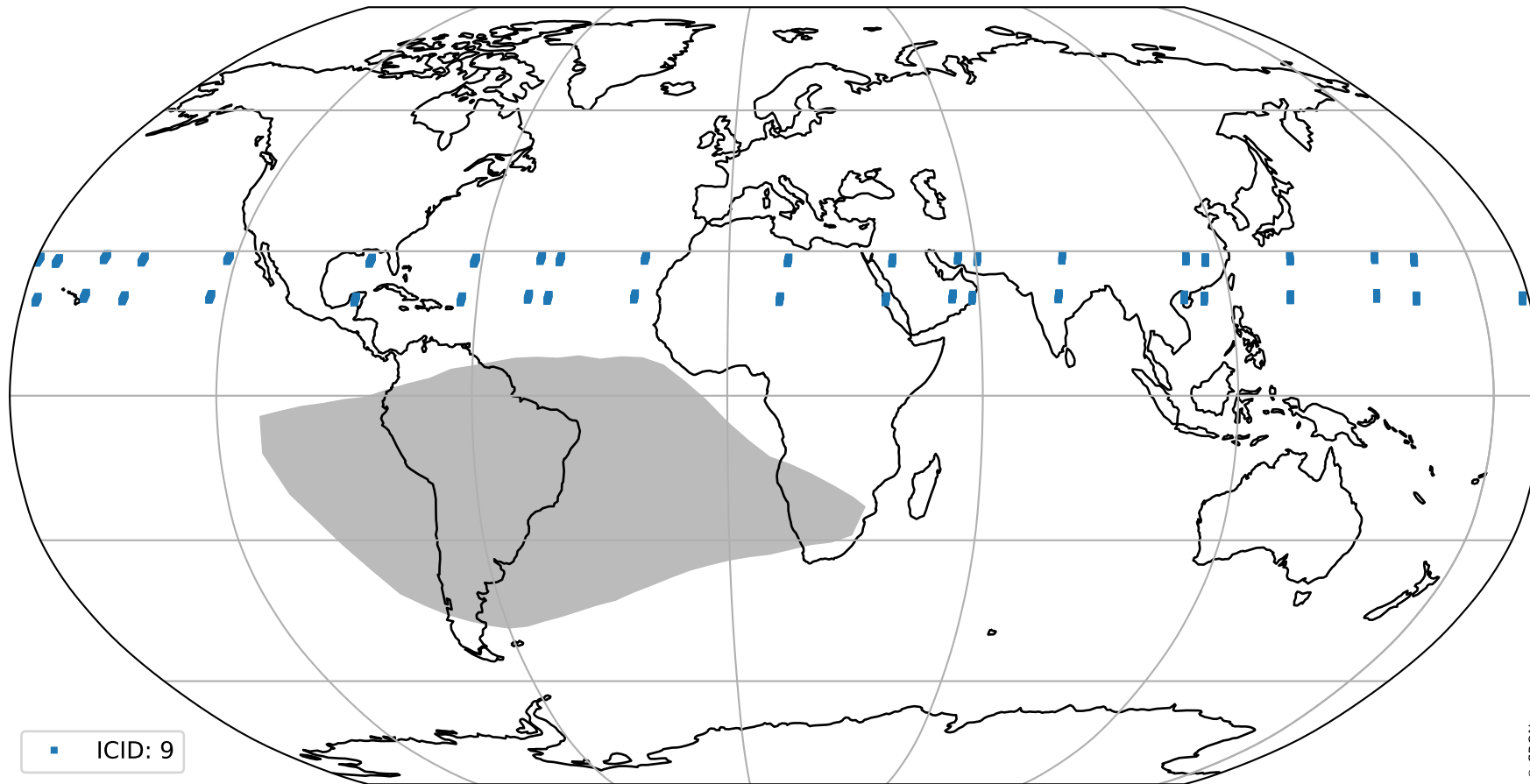
orbits : 20 in [6682, 6727]  
coverage : 2019-01-27 / 2019-01-30  
created : 2023-08-22T07:51:55

## Histograms of pixel-quality



# Tropomi SWIR pixel quality (official) ground-tracks of Sentinel-5P

orbits : 20 in [6682, 6727]  
coverage : 2019-01-27 / 2019-01-30  
created : 2023-08-22T07:51:55



# Tropomi SWIR pixel quality (official)

orbits : [2827, 6727]  
coverage : 2018-04-30 / 2019-01-30  
created : 2023-08-22T07:51:55

## trend of pixel quality & temperatures

