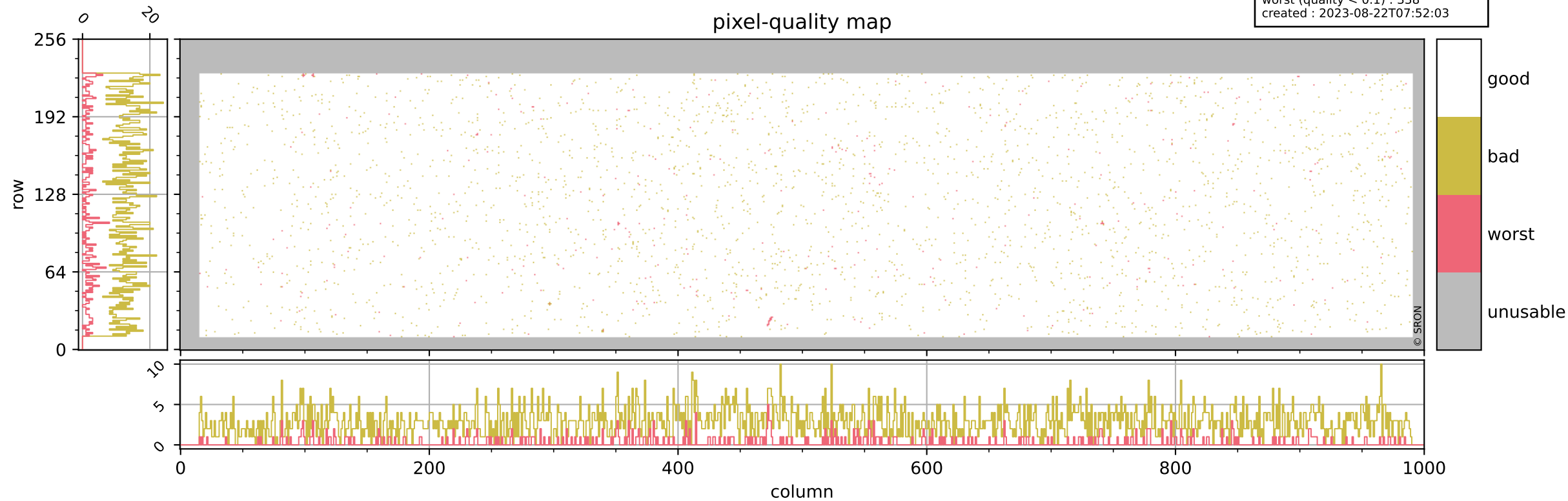


Tropomi SWIR pixel quality (official)

orbits : 20 in [6742, 6787]
coverage : 2019-01-31 / 2019-02-03
bad (quality < 0.8) : 2880
worst (quality < 0.1) : 338
created : 2023-08-22T07:52:03

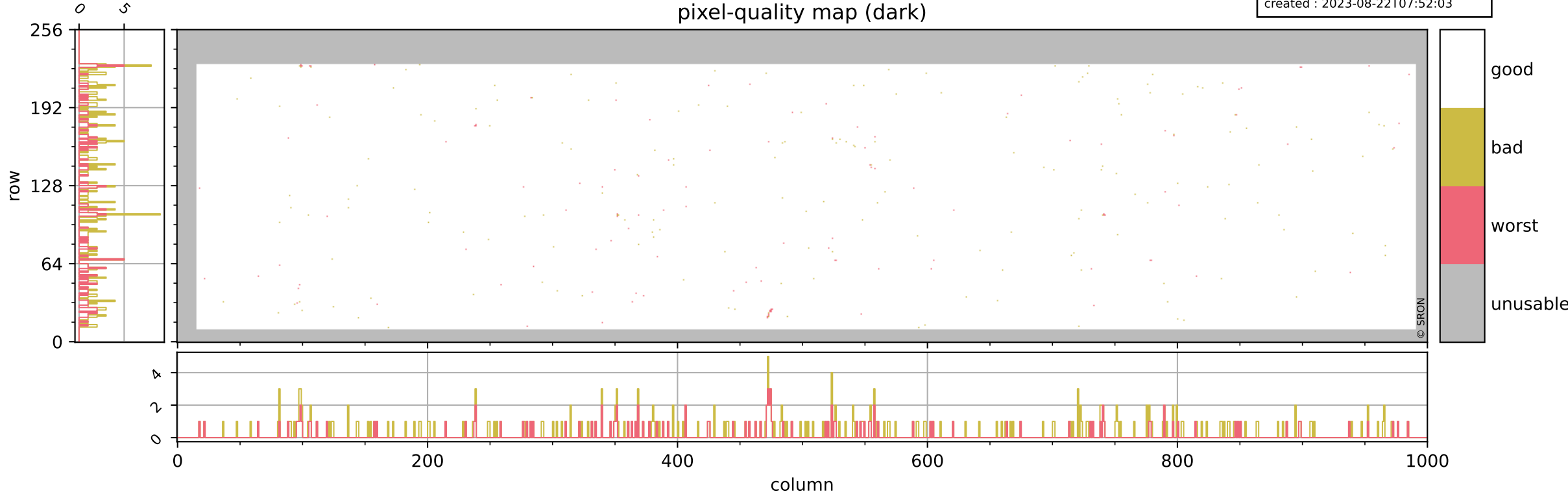
pixel-quality map



Tropomi SWIR pixel quality (official)

orbits : 20 in [6742, 6787]
coverage : 2019-01-31 / 2019-02-03
bad (quality < 0.8) : 292
worst (quality < 0.1) : 115
created : 2023-08-22T07:52:03

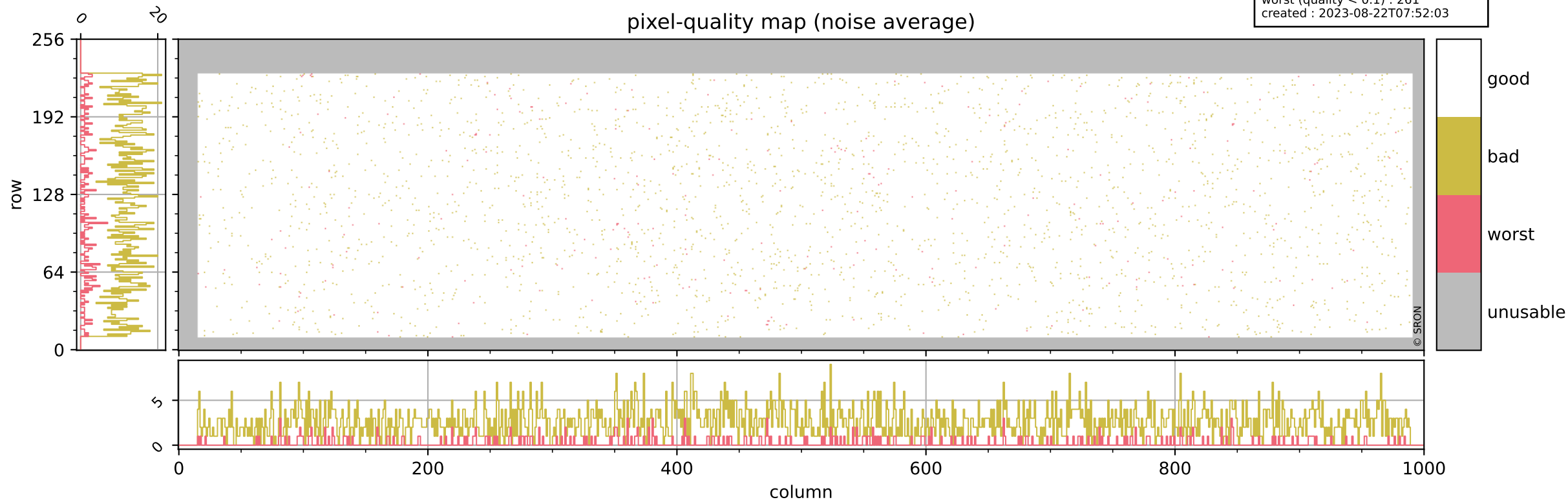
pixel-quality map (dark)



Tropomi SWIR pixel quality (official)

orbits : 20 in [6742, 6787]
coverage : 2019-01-31 / 2019-02-03
bad (quality < 0.8) : 2629
worst (quality < 0.1) : 261
created : 2023-08-22T07:52:03

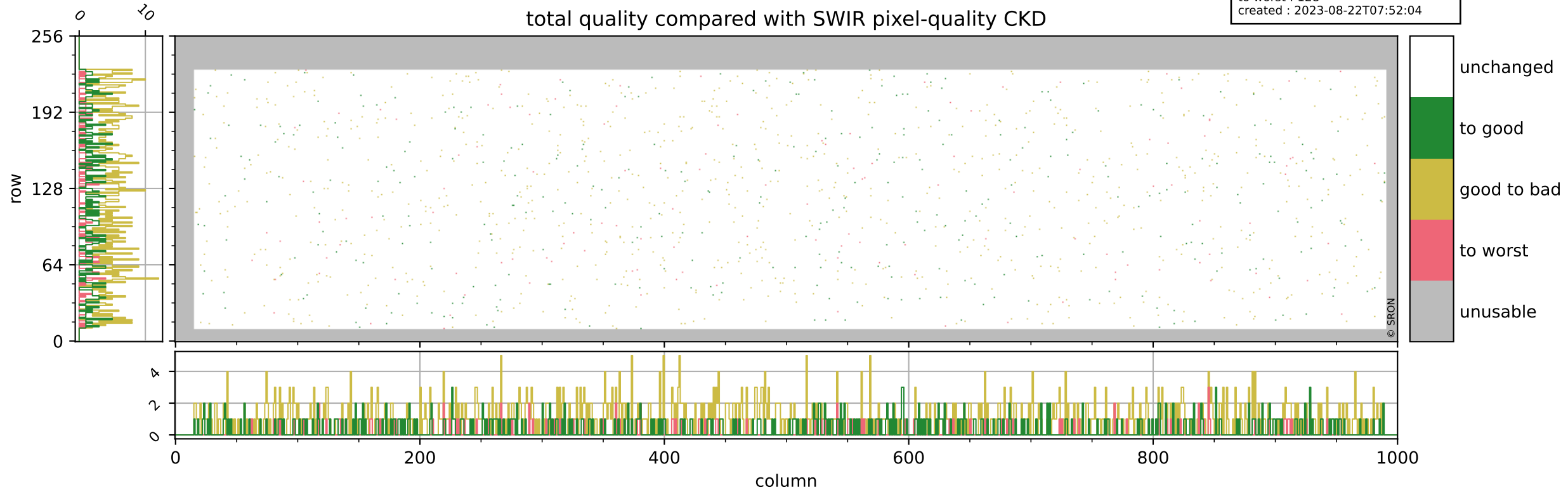
pixel-quality map (noise average)



Tropomi SWIR pixel quality (official)

orbits : 20 in [6742, 6787]
coverage : 2019-01-31 / 2019-02-03
to good : 351
good to bad : 855
to worst : 128
created : 2023-08-22T07:52:04

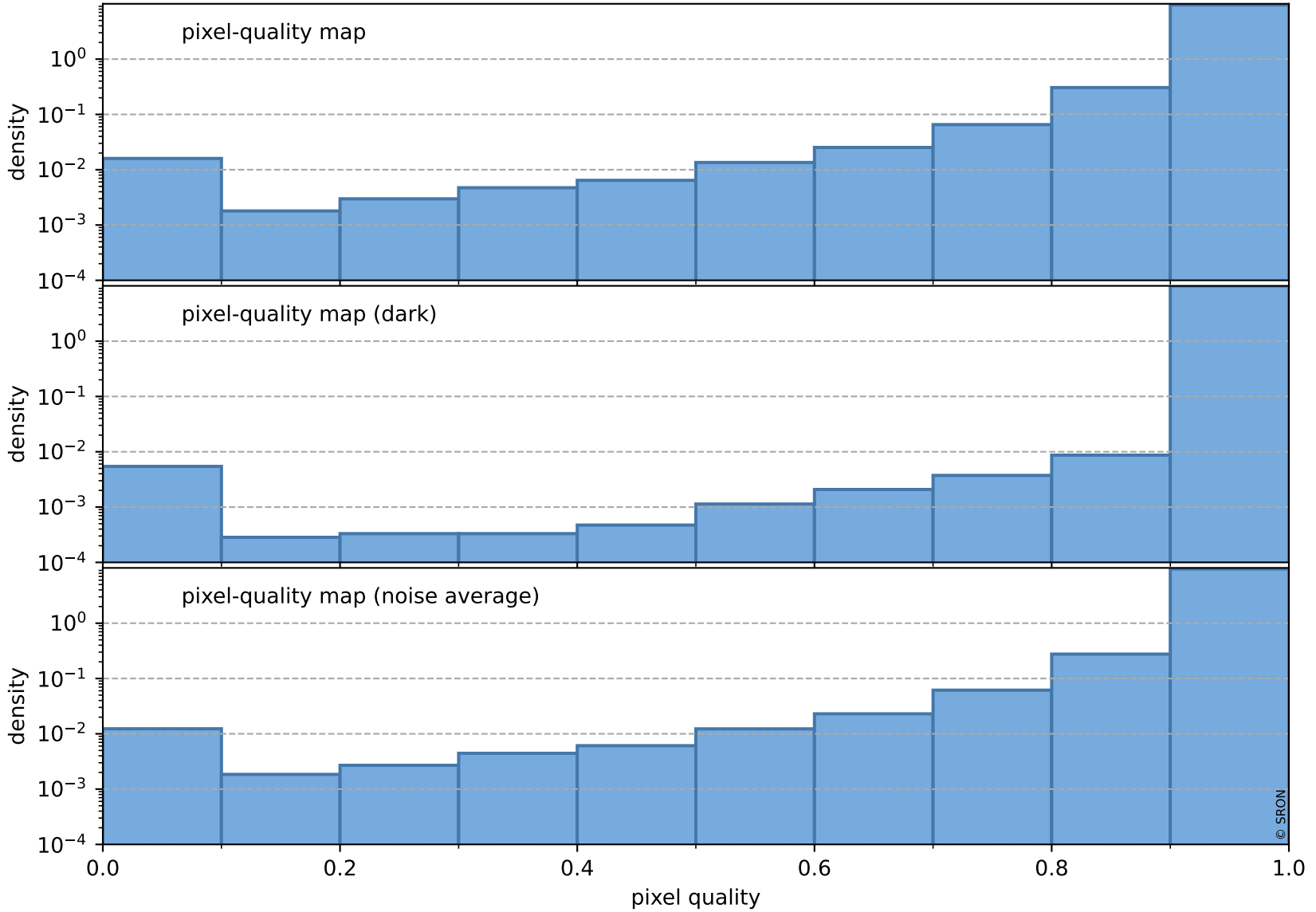
total quality compared with SWIR pixel-quality CKD



Tropomi SWIR pixel quality (official)

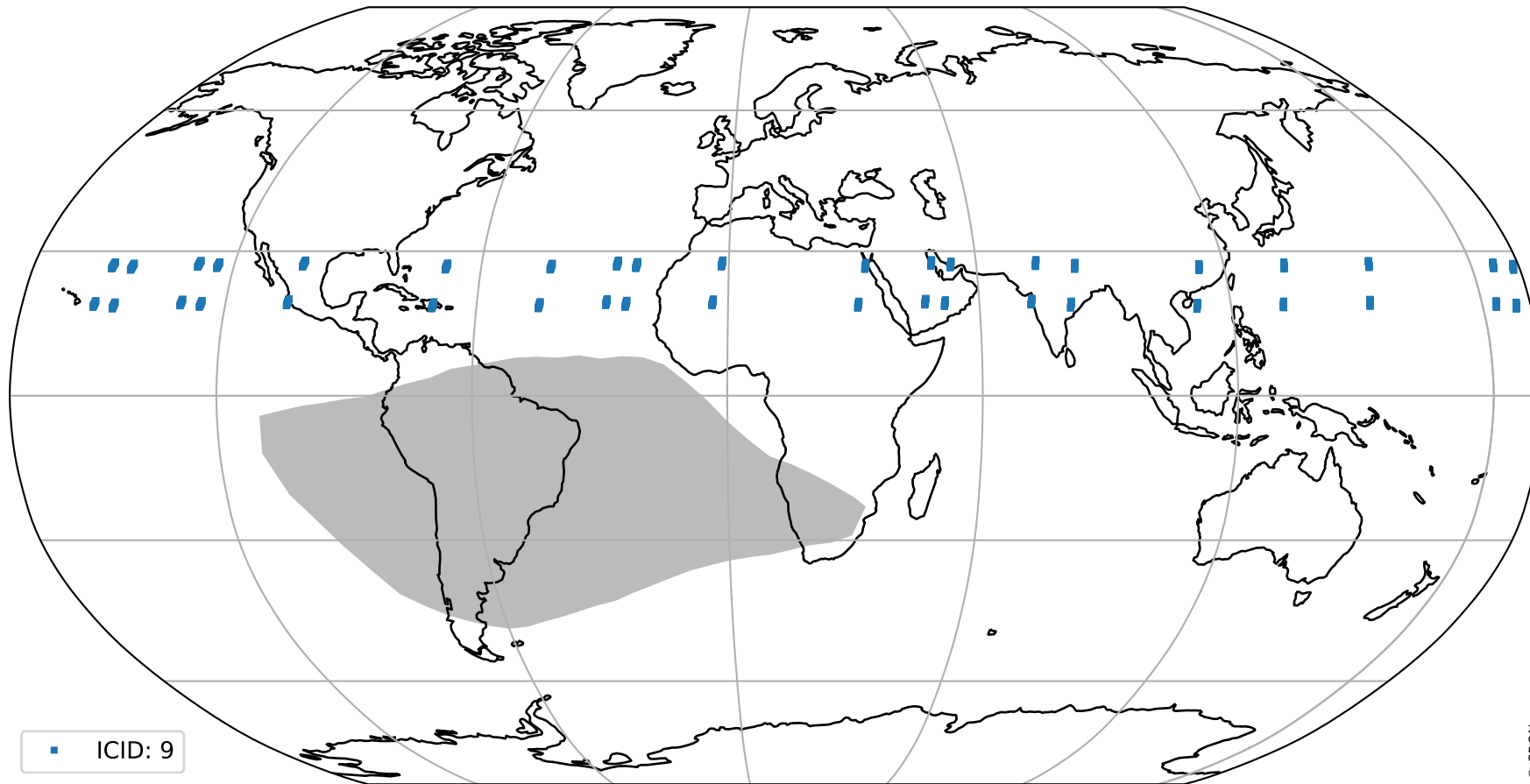
orbits : 20 in [6742, 6787]
coverage : 2019-01-31 / 2019-02-03
created : 2023-08-22T07:52:04

Histograms of pixel-quality



Tropomi SWIR pixel quality (official) ground-tracks of Sentinel-5P

orbits : 20 in [6742, 6787]
coverage : 2019-01-31 / 2019-02-03
created : 2023-08-22T07:52:04



Tropomi SWIR pixel quality (official)

orbits : [2827, 6787]
coverage : 2018-04-30 / 2019-02-03
created : 2023-08-22T07:52:04

trend of pixel quality & temperatures

