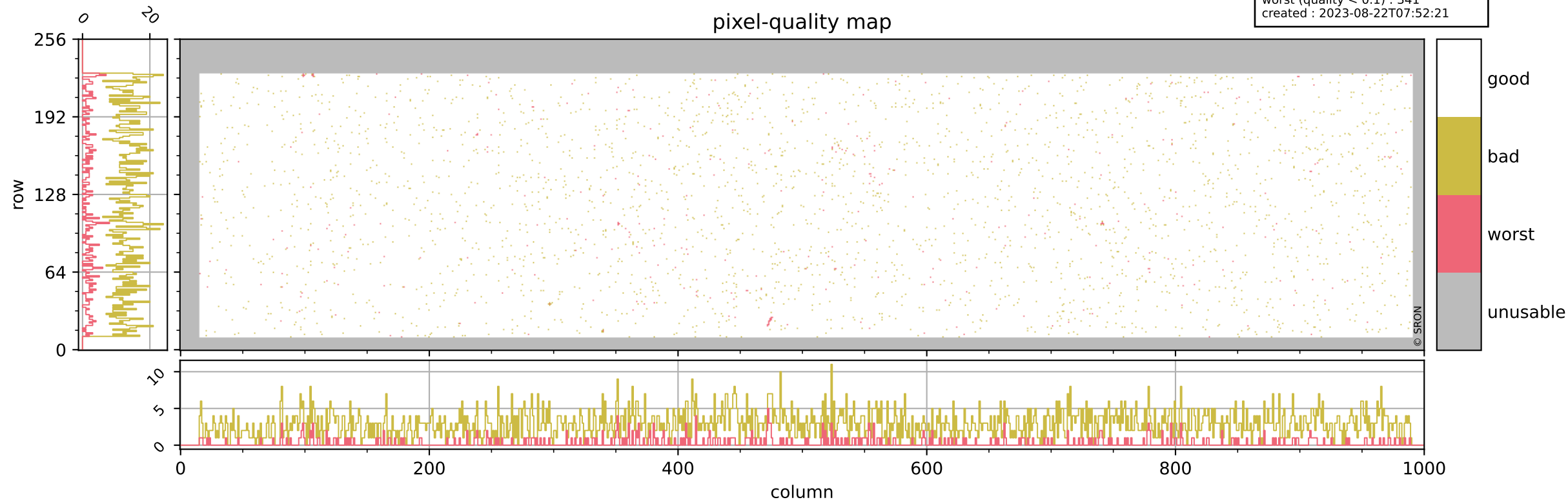


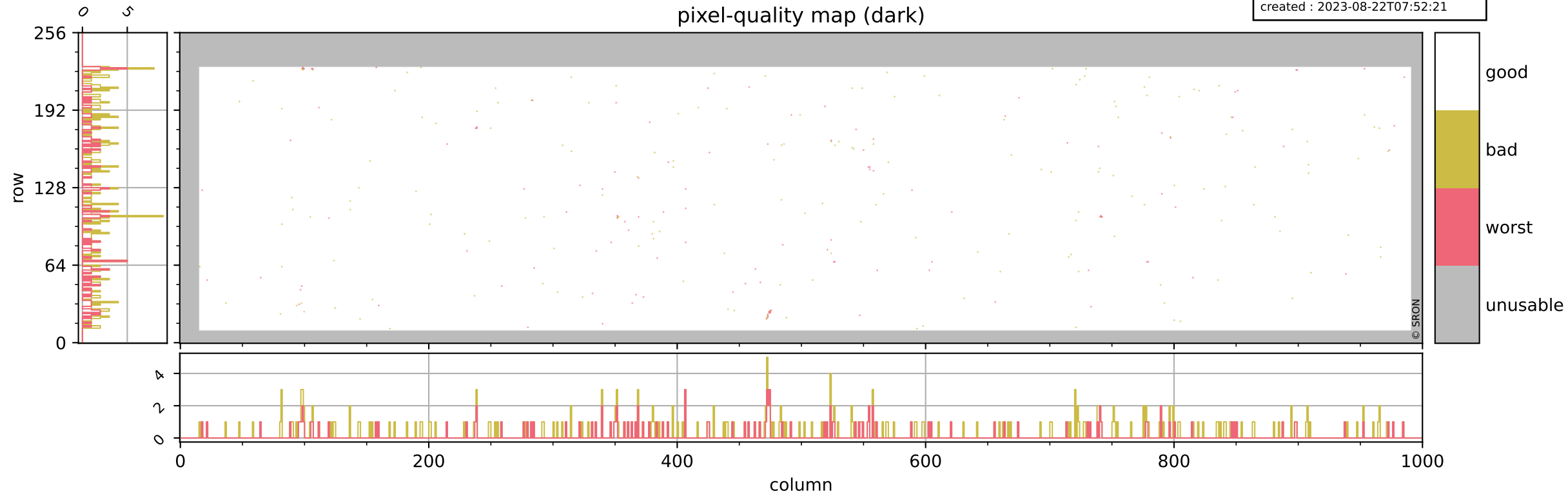
Tropomi SWIR pixel quality (official)

orbits : 20 in [6862, 6907]
coverage : 2019-02-09 / 2019-02-12
bad (quality < 0.8) : 2904
worst (quality < 0.1) : 341
created : 2023-08-22T07:52:21



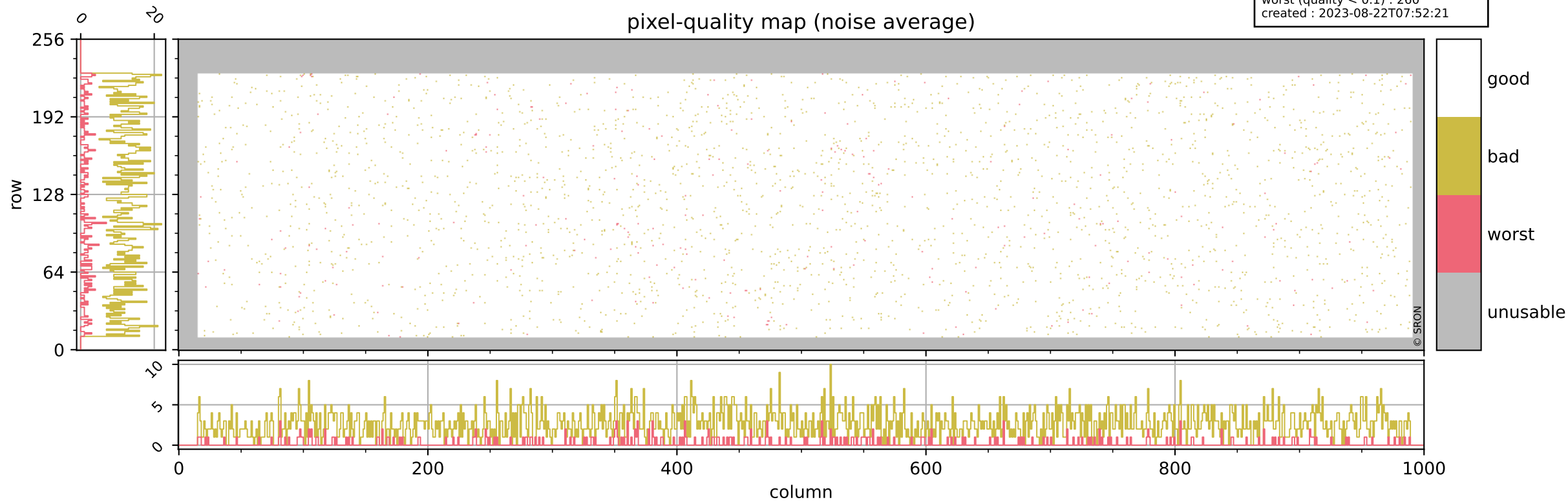
Tropomi SWIR pixel quality (official)

orbits : 20 in [6862, 6907]
coverage : 2019-02-09 / 2019-02-12
bad (quality < 0.8) : 293
worst (quality < 0.1) : 116
created : 2023-08-22T07:52:21



Tropomi SWIR pixel quality (official)

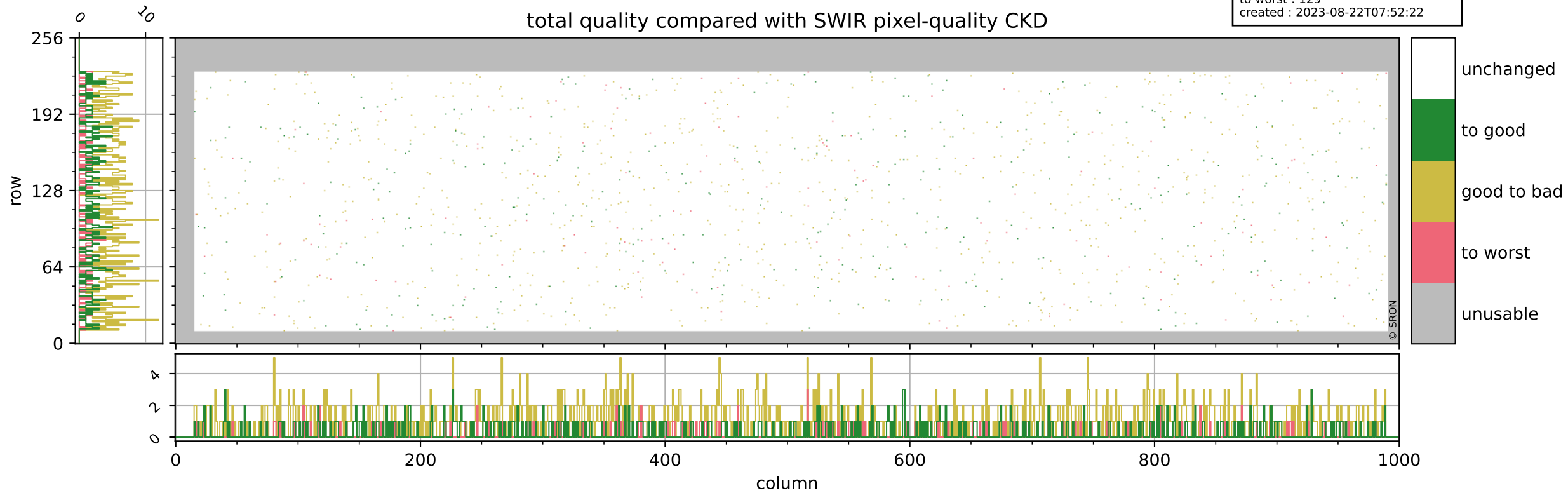
orbits : 20 in [6862, 6907]
coverage : 2019-02-09 / 2019-02-12
bad (quality < 0.8) : 2653
worst (quality < 0.1) : 260
created : 2023-08-22T07:52:21



Tropomi SWIR pixel quality (official)

orbits : 20 in [6862, 6907]
coverage : 2019-02-09 / 2019-02-12
to good : 347
good to bad : 874
to worst : 129
created : 2023-08-22T07:52:22

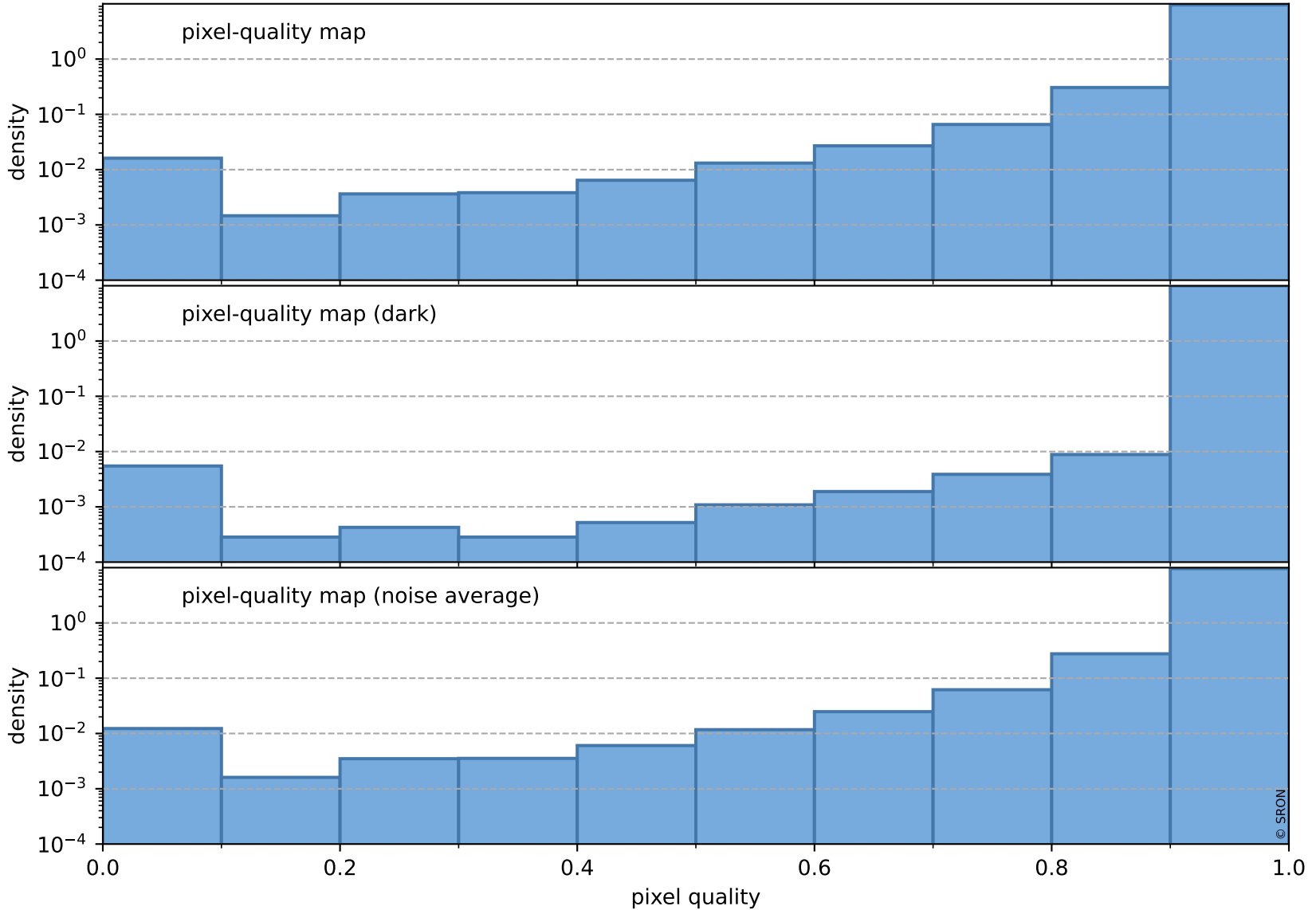
total quality compared with SWIR pixel-quality CKD



Tropomi SWIR pixel quality (official)

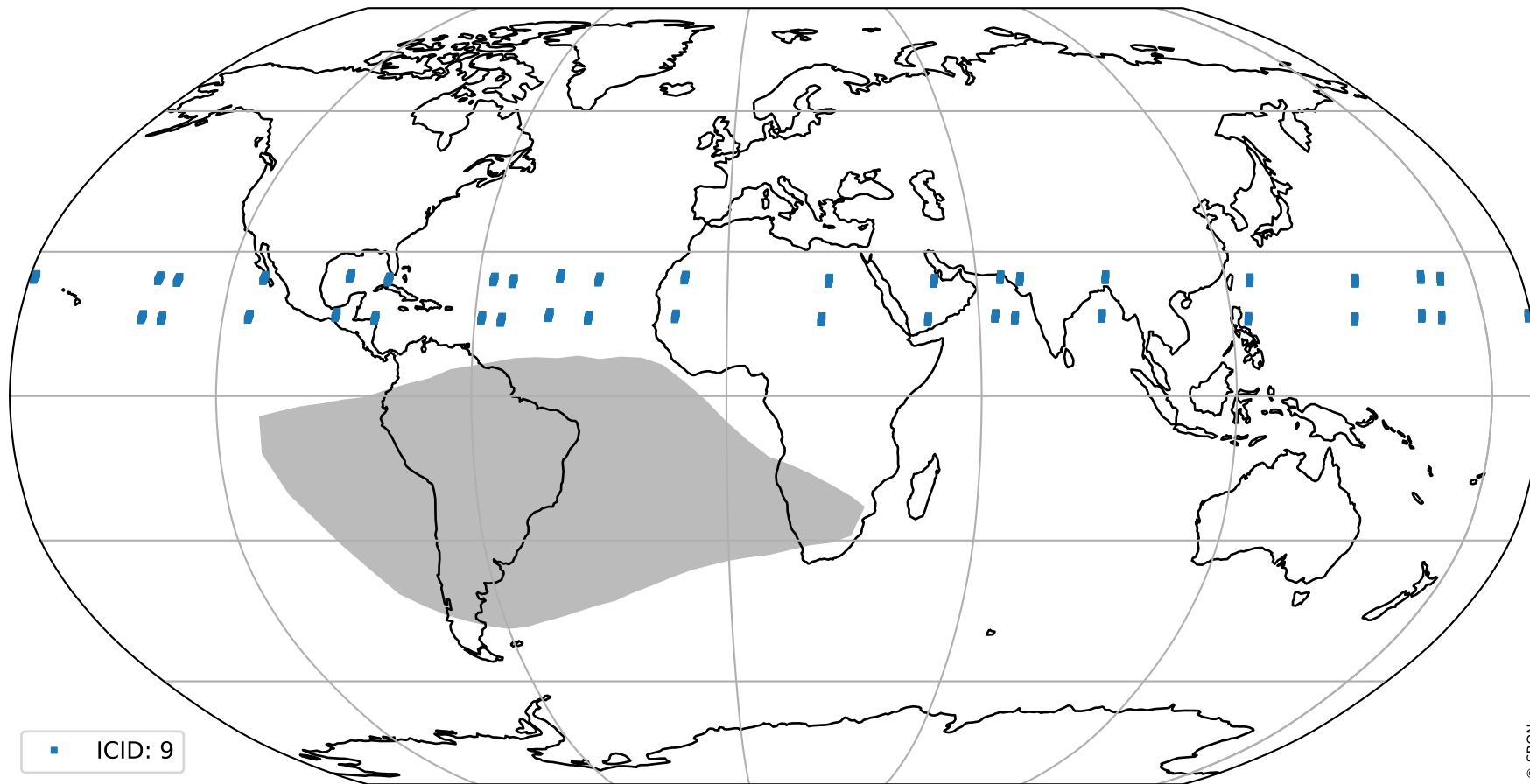
orbits : 20 in [6862, 6907]
coverage : 2019-02-09 / 2019-02-12
created : 2023-08-22T07:52:22

Histograms of pixel-quality



Tropomi SWIR pixel quality (official) ground-tracks of Sentinel-5P

orbits : 20 in [6862, 6907]
coverage : 2019-02-09 / 2019-02-12
created : 2023-08-22T07:52:22



Tropomi SWIR pixel quality (official)

orbits : [2827, 6907]
coverage : 2018-04-30 / 2019-02-12
created : 2023-08-22T07:52:22

trend of pixel quality & temperatures

