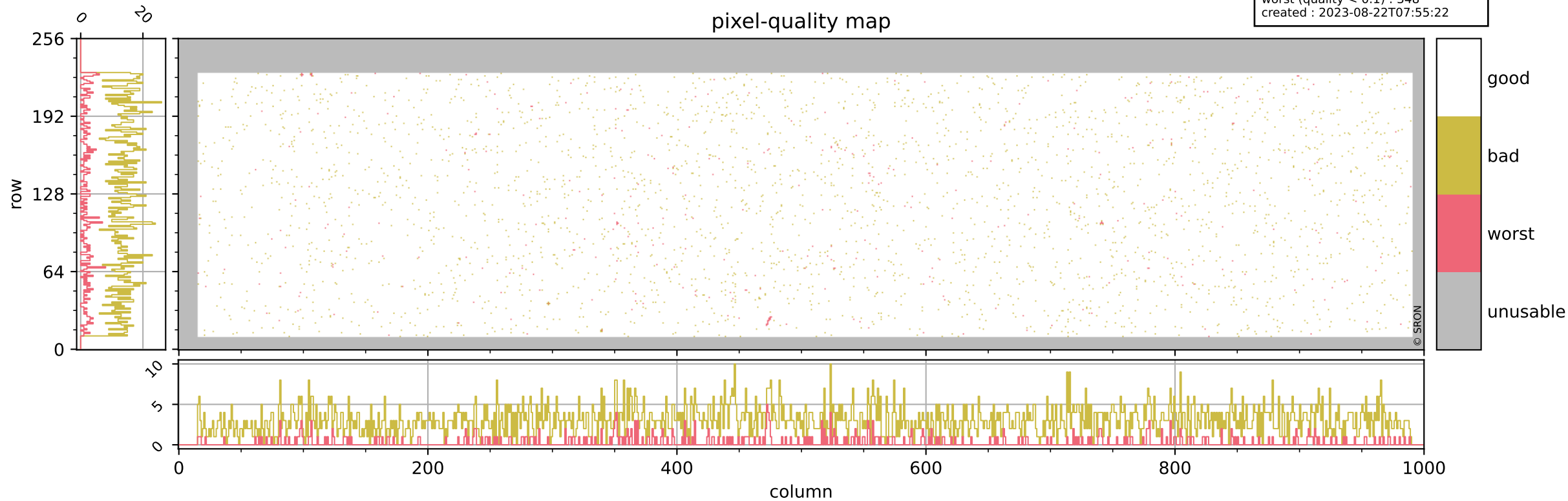


Tropomi SWIR pixel quality (official)

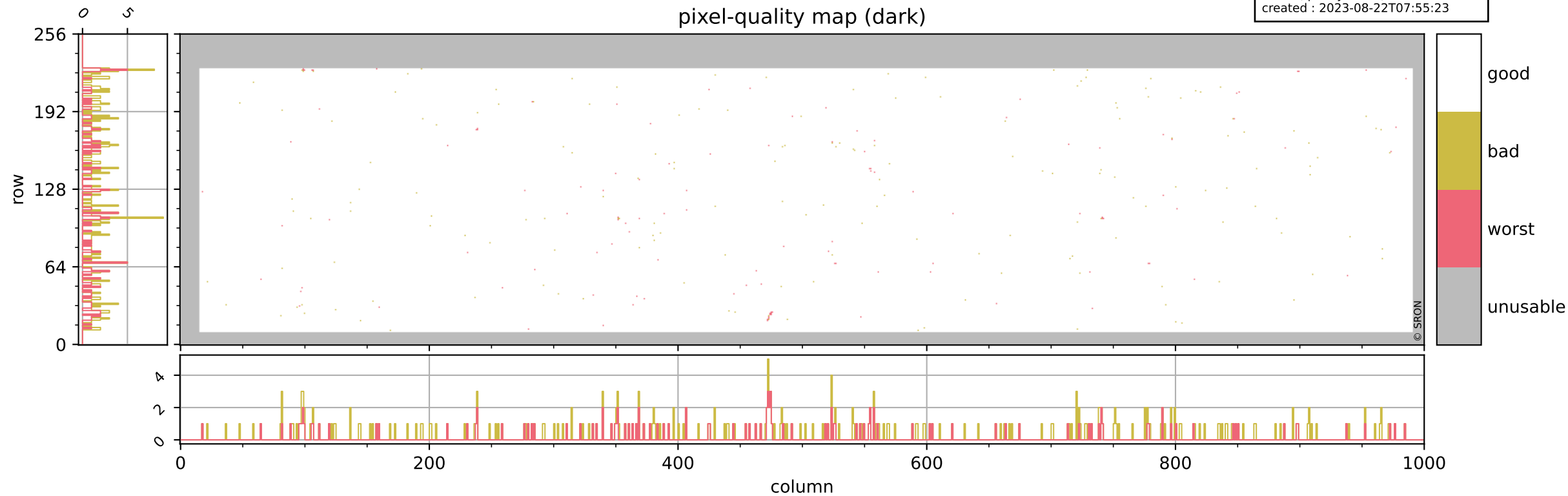
orbits : 20 in [8092, 8137]
coverage : 2019-05-06 / 2019-05-09
bad (quality < 0.8) : 3038
worst (quality < 0.1) : 348
created : 2023-08-22T07:55:22

pixel-quality map



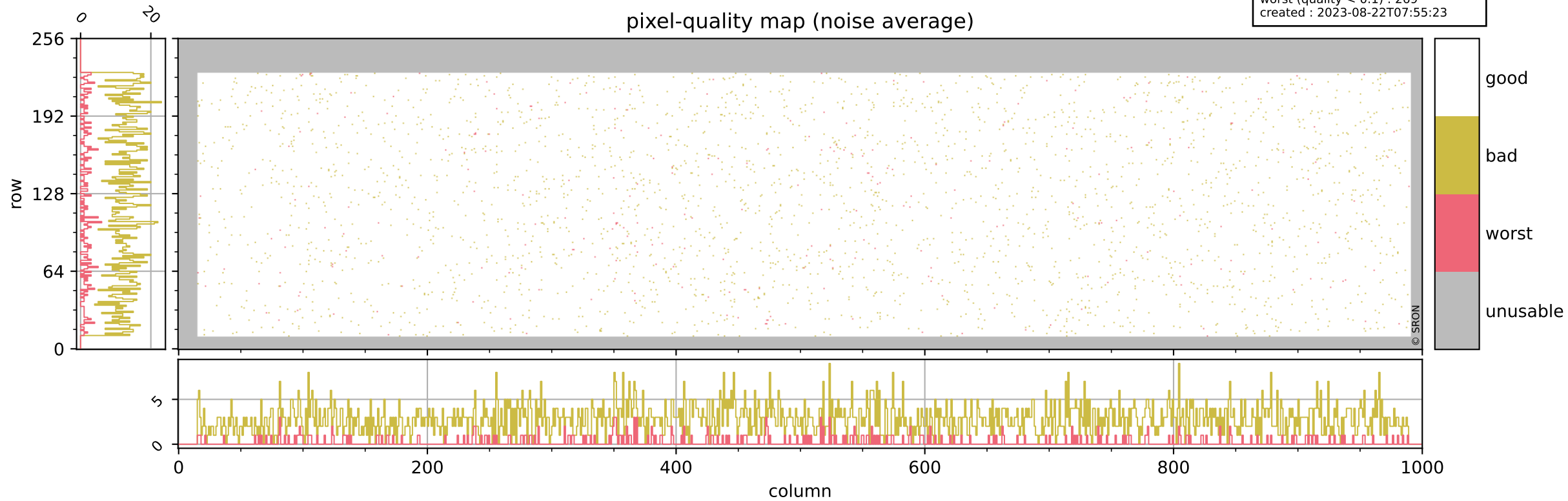
Tropomi SWIR pixel quality (official)

orbits : 20 in [8092, 8137]
coverage : 2019-05-06 / 2019-05-09
bad (quality < 0.8) : 290
worst (quality < 0.1) : 118
created : 2023-08-22T07:55:23



Tropomi SWIR pixel quality (official)

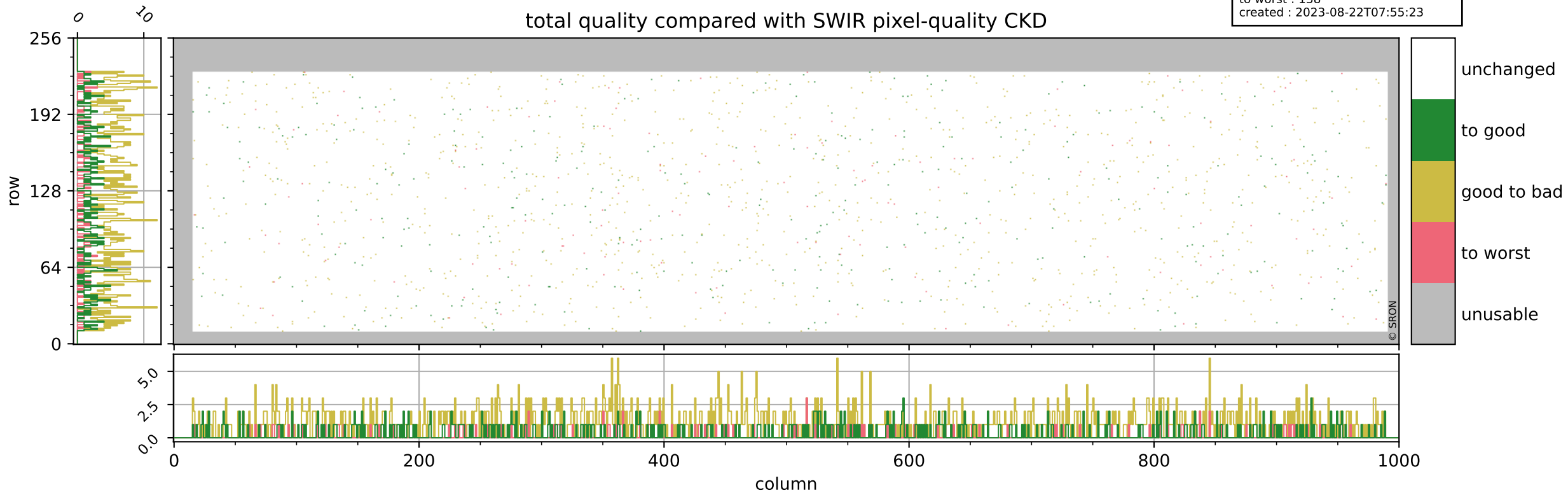
orbits : 20 in [8092, 8137]
coverage : 2019-05-06 / 2019-05-09
bad (quality < 0.8) : 2792
worst (quality < 0.1) : 269
created : 2023-08-22T07:55:23



Tropomi SWIR pixel quality (official)

orbits : 20 in [8092, 8137]
coverage : 2019-05-06 / 2019-05-09
to good : 354
good to bad : 1003
to worst : 138
created : 2023-08-22T07:55:23

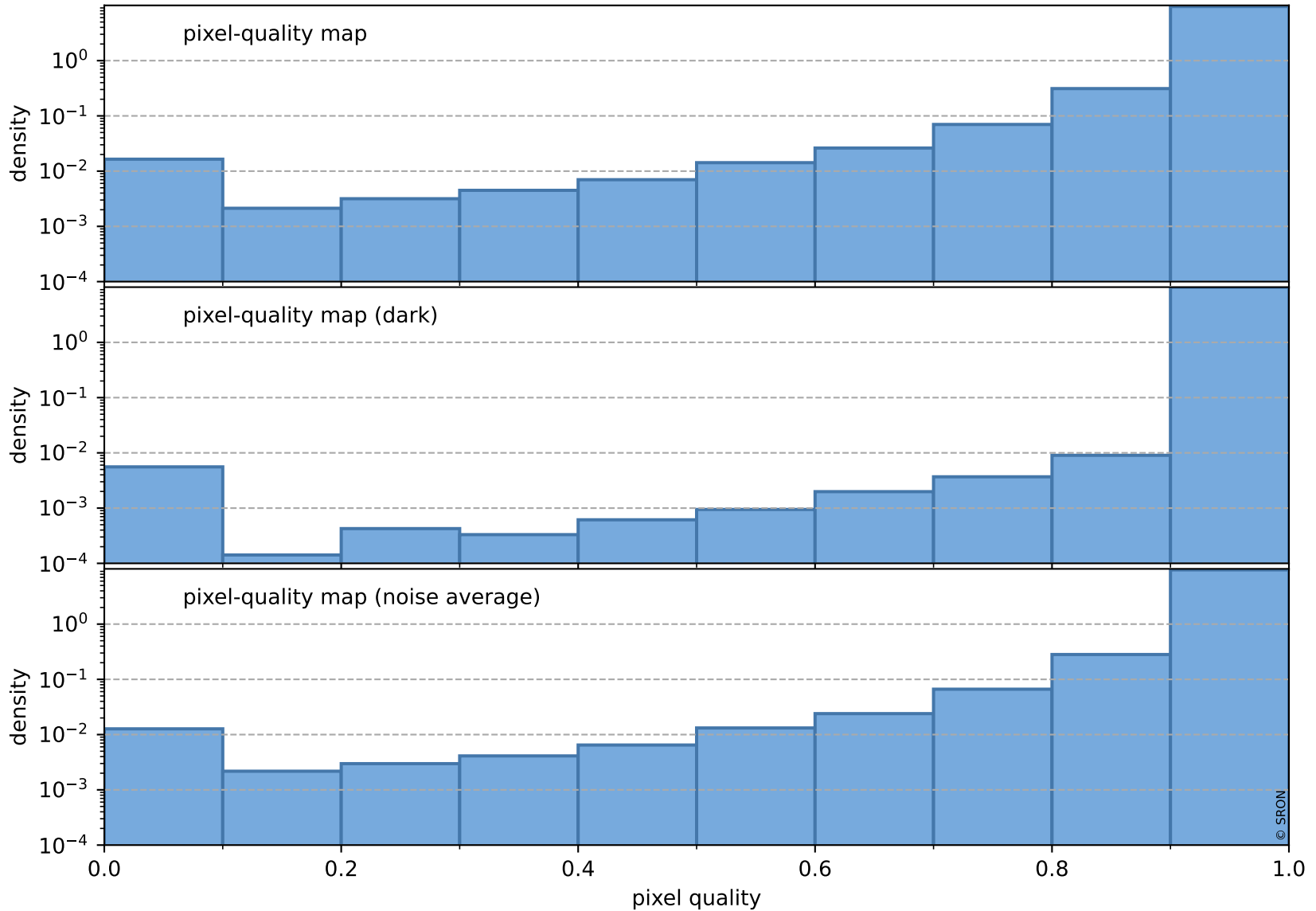
total quality compared with SWIR pixel-quality CKD



Tropomi SWIR pixel quality (official)

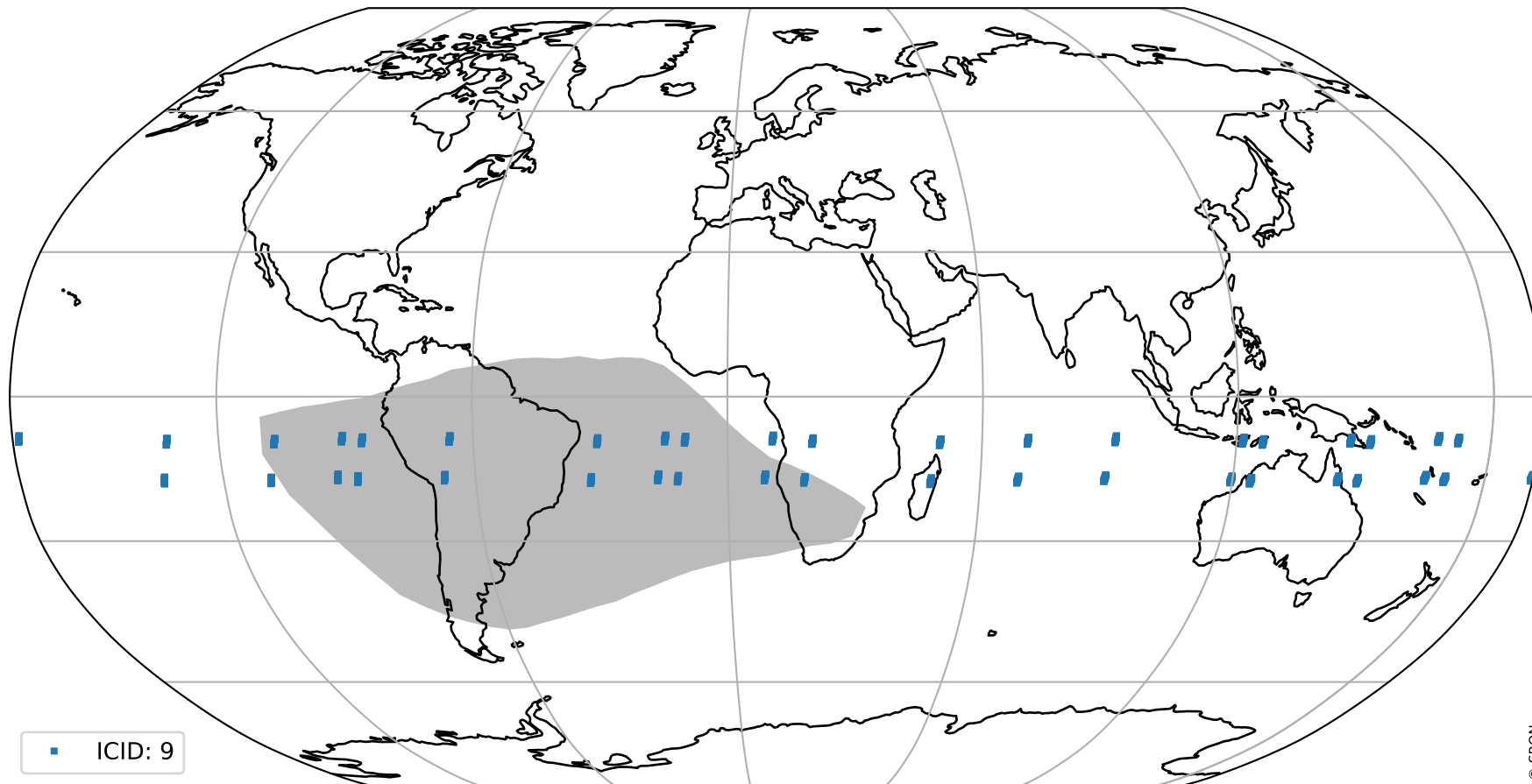
orbits : 20 in [8092, 8137]
coverage : 2019-05-06 / 2019-05-09
created : 2023-08-22T07:55:23

Histograms of pixel-quality



Tropomi SWIR pixel quality (official) ground-tracks of Sentinel-5P

orbits : 20 in [8092, 8137]
coverage : 2019-05-06 / 2019-05-09
created : 2023-08-22T07:55:24



Tropomi SWIR pixel quality (official)

orbits : [2827, 8137]
coverage : 2018-04-30 / 2019-05-09
created : 2023-08-22T07:55:24

trend of pixel quality & temperatures

