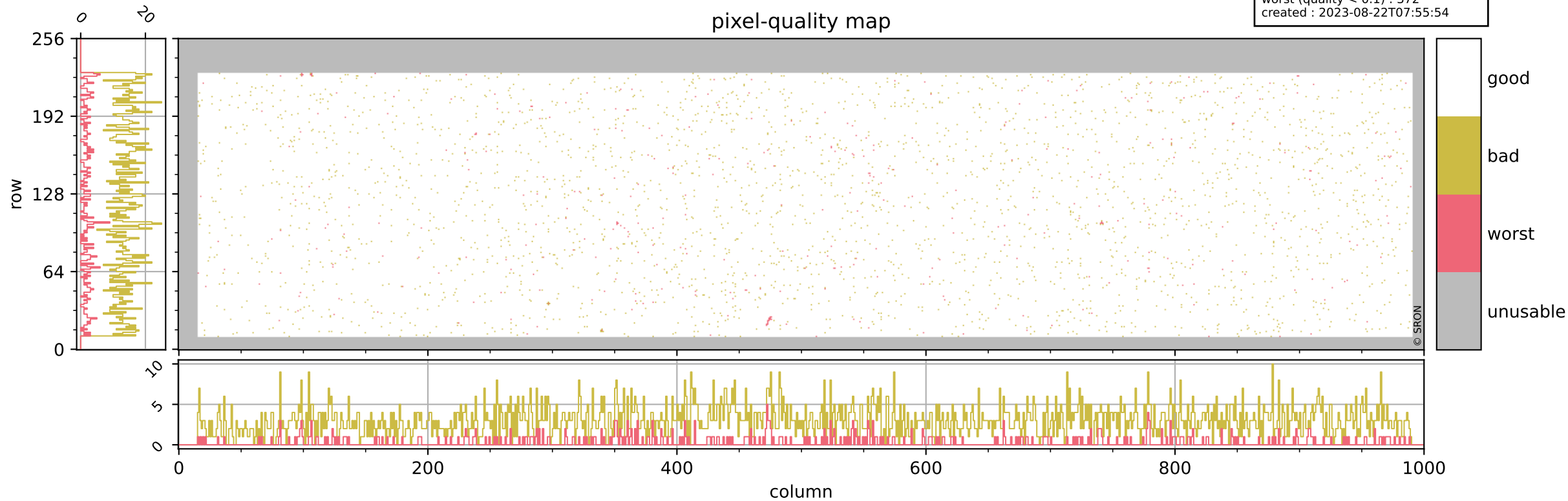


Tropomi SWIR pixel quality (official)

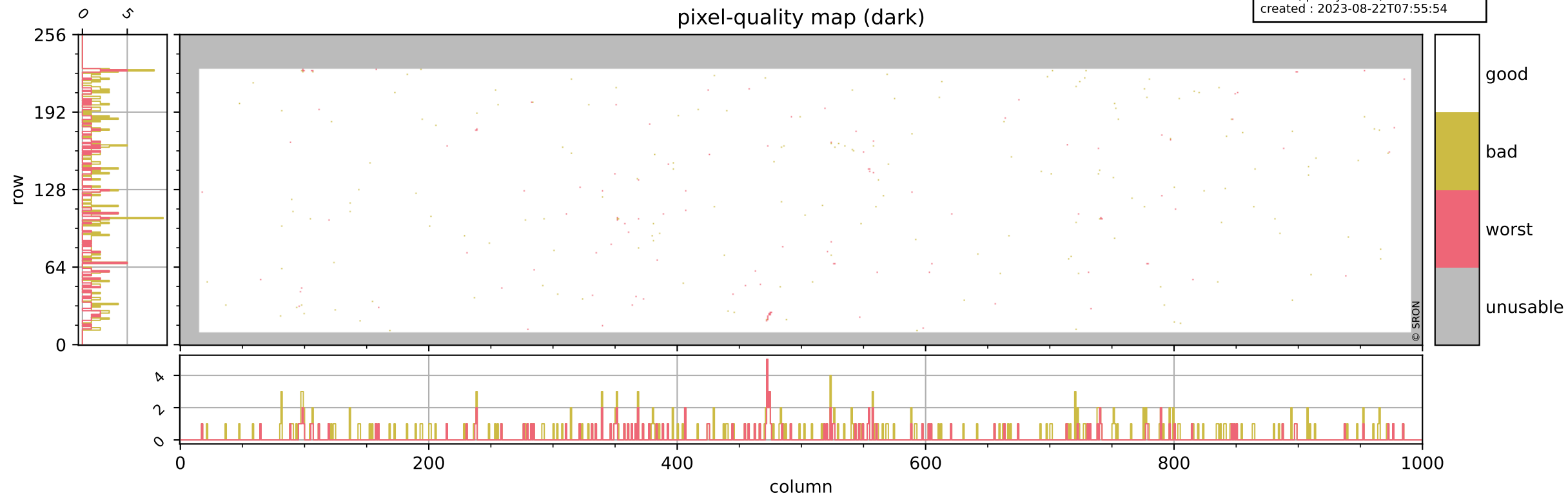
orbits : 20 in [8302, 8347]
coverage : 2019-05-21 / 2019-05-24
bad (quality < 0.8) : 3012
worst (quality < 0.1) : 372
created : 2023-08-22T07:55:54

pixel-quality map



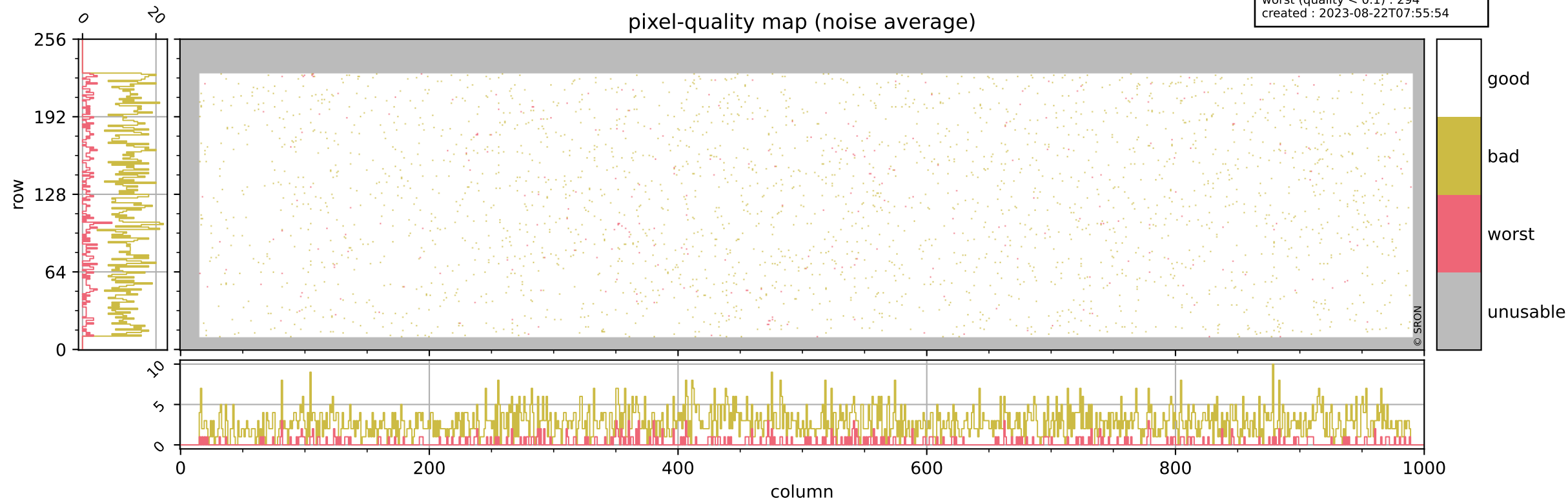
Tropomi SWIR pixel quality (official)

orbits : 20 in [8302, 8347]
coverage : 2019-05-21 / 2019-05-24
bad (quality < 0.8) : 293
worst (quality < 0.1) : 119
created : 2023-08-22T07:55:54



Tropomi SWIR pixel quality (official)

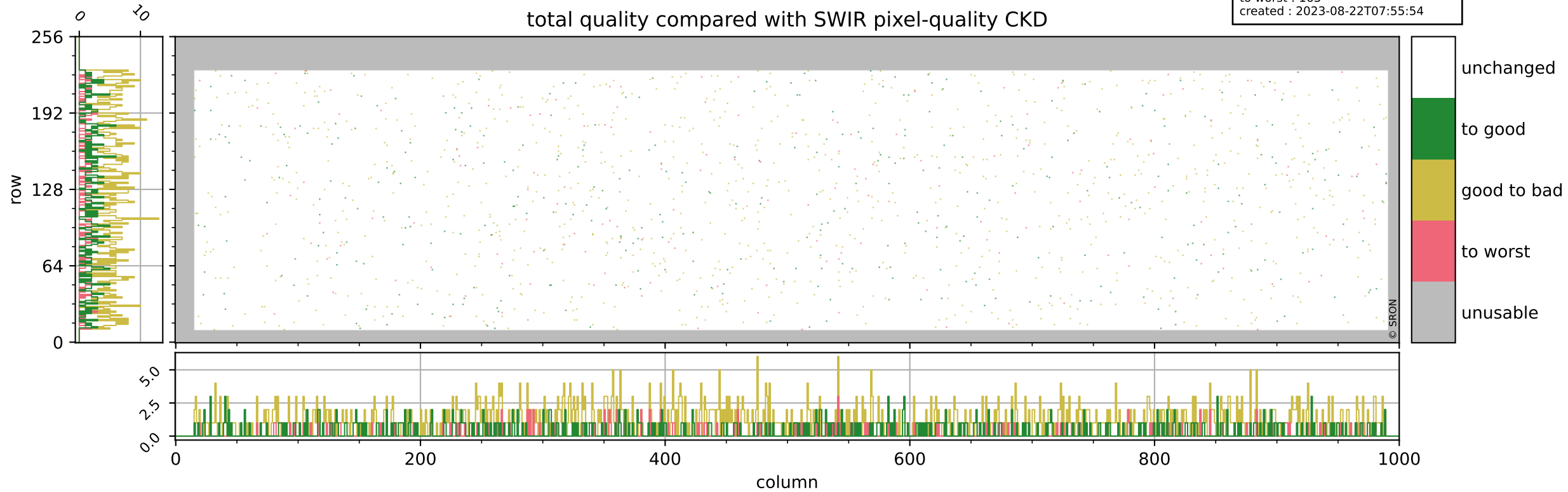
orbits : 20 in [8302, 8347]
coverage : 2019-05-21 / 2019-05-24
bad (quality < 0.8) : 2744
worst (quality < 0.1) : 294
created : 2023-08-22T07:55:54



Tropomi SWIR pixel quality (official)

orbits : 20 in [8302, 8347]
coverage : 2019-05-21 / 2019-05-24
to good : 370
good to bad : 973
to worst : 163
created : 2023-08-22T07:55:54

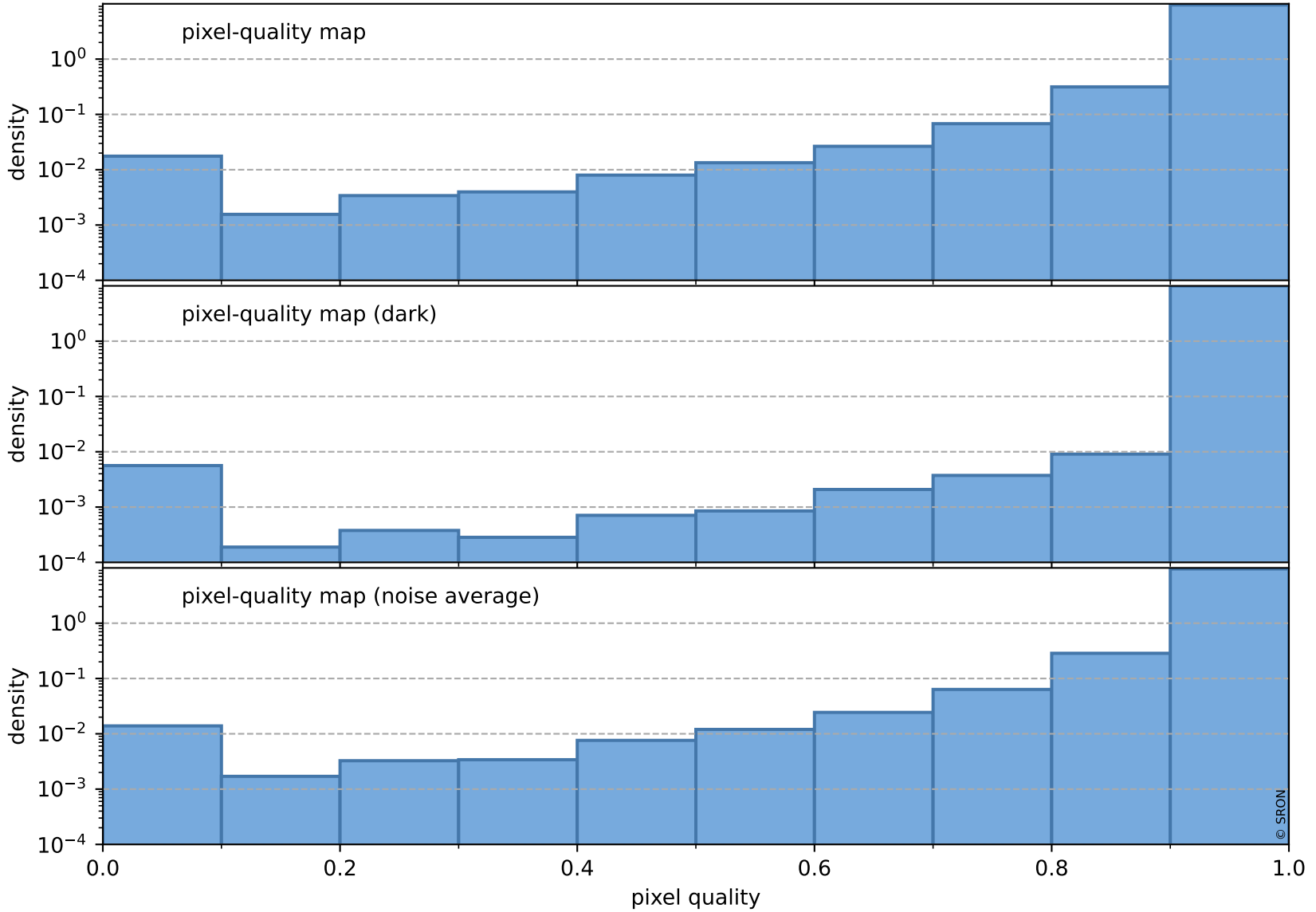
total quality compared with SWIR pixel-quality CKD



Tropomi SWIR pixel quality (official)

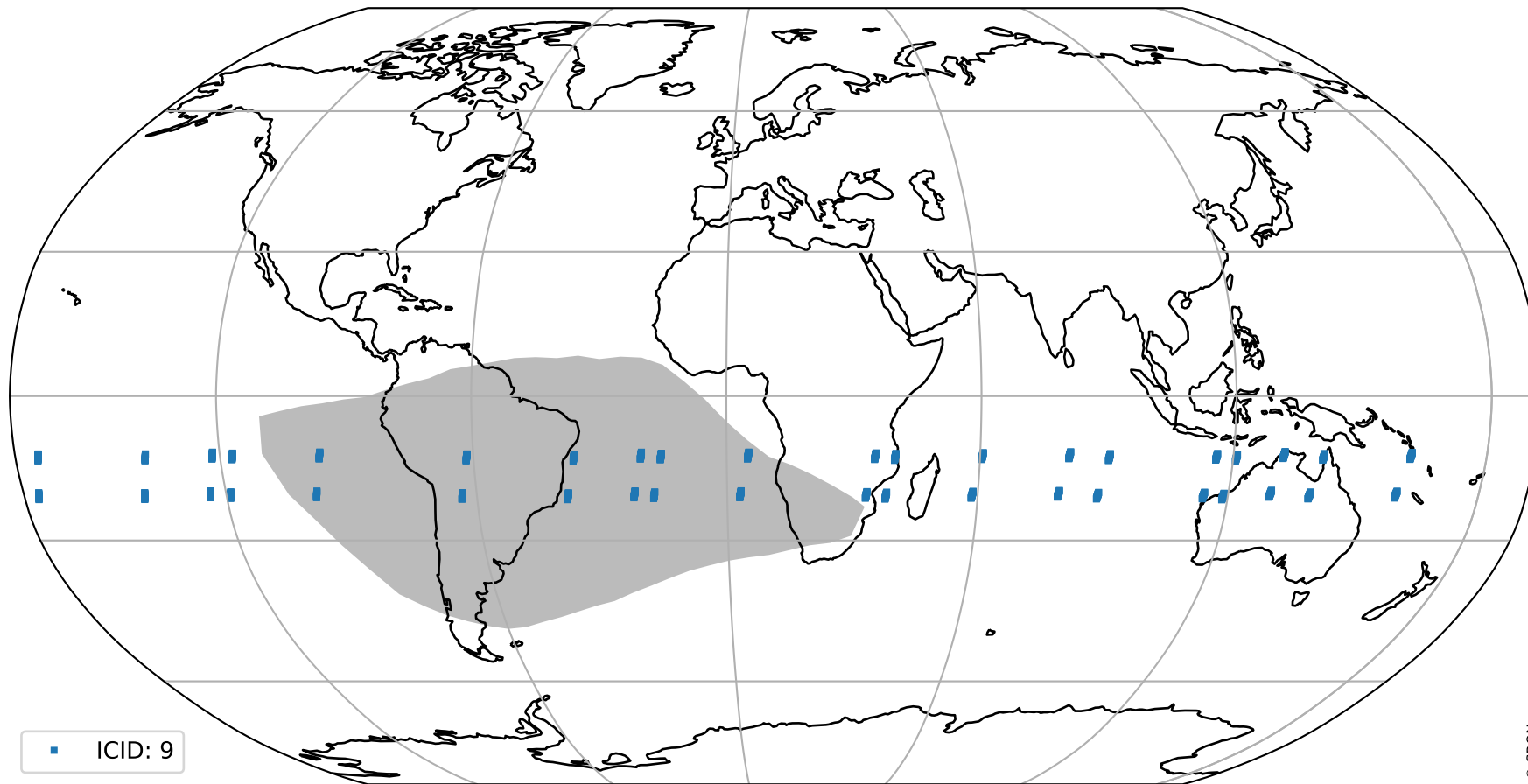
orbits : 20 in [8302, 8347]
coverage : 2019-05-21 / 2019-05-24
created : 2023-08-22T07:55:54

Histograms of pixel-quality



Tropomi SWIR pixel quality (official) ground-tracks of Sentinel-5P

orbits : 20 in [8302, 8347]
coverage : 2019-05-21 / 2019-05-24
created : 2023-08-22T07:55:55



Tropomi SWIR pixel quality (official)

orbits : [2827, 8347]
coverage : 2018-04-30 / 2019-05-24
created : 2023-08-22T07:55:55

trend of pixel quality & temperatures

