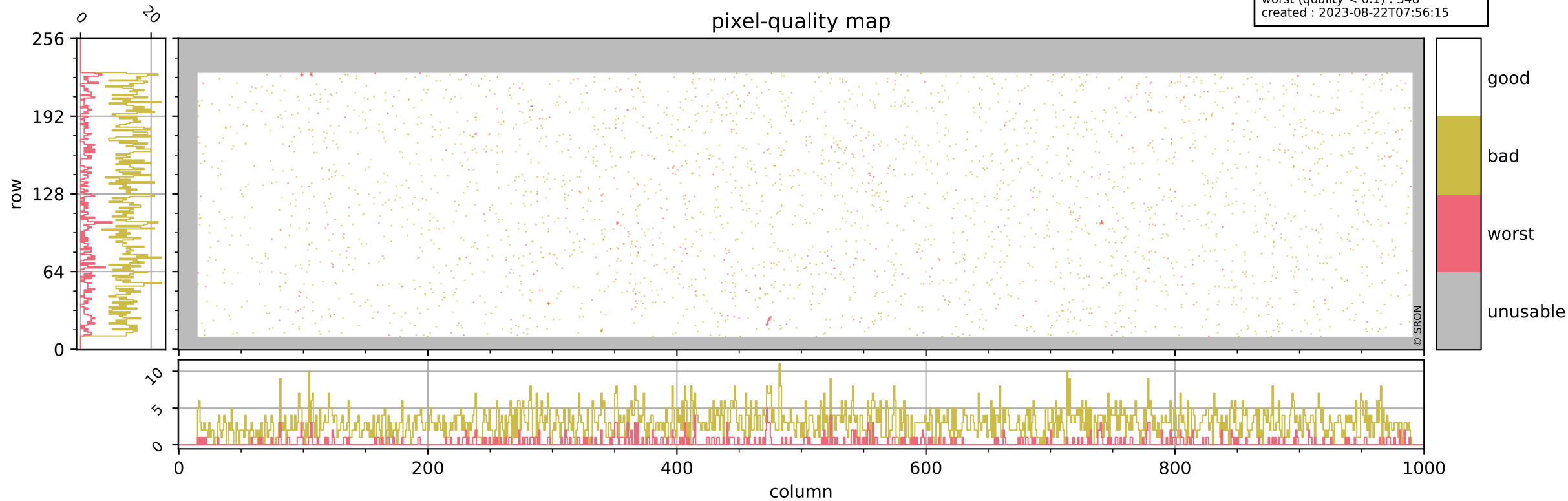


Tropomi SWIR pixel quality (official)

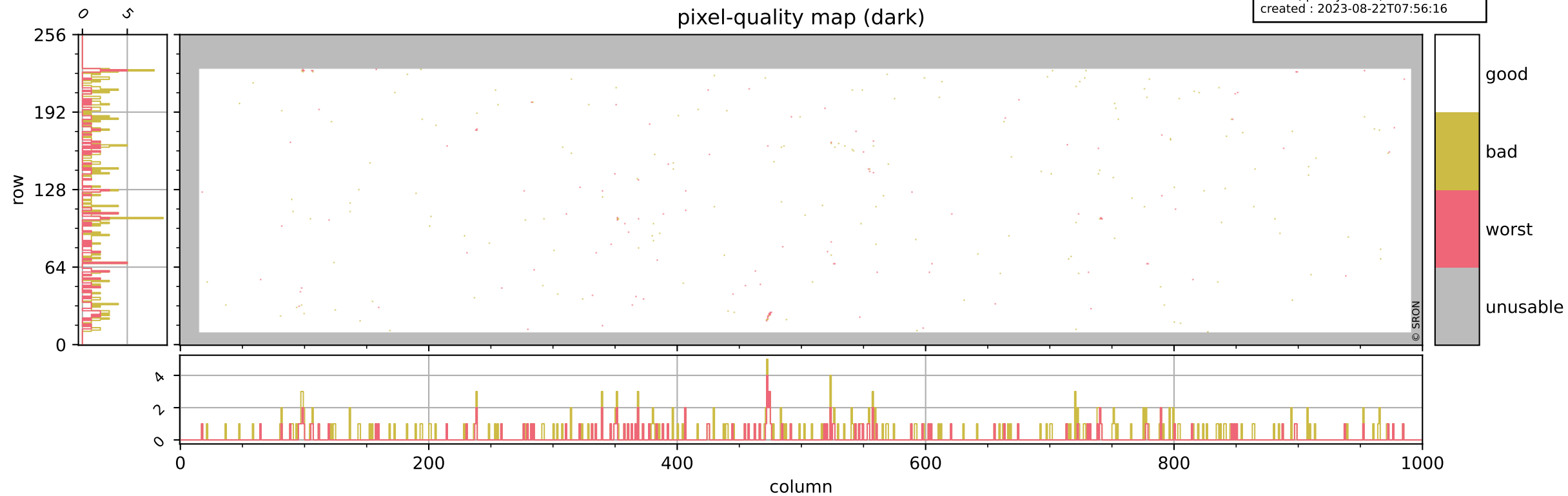
orbits : 20 in [8452, 8497]
coverage : 2019-06-01 / 2019-06-04
bad (quality < 0.8) : 3012
worst (quality < 0.1) : 348
created : 2023-08-22T07:56:15

pixel-quality map



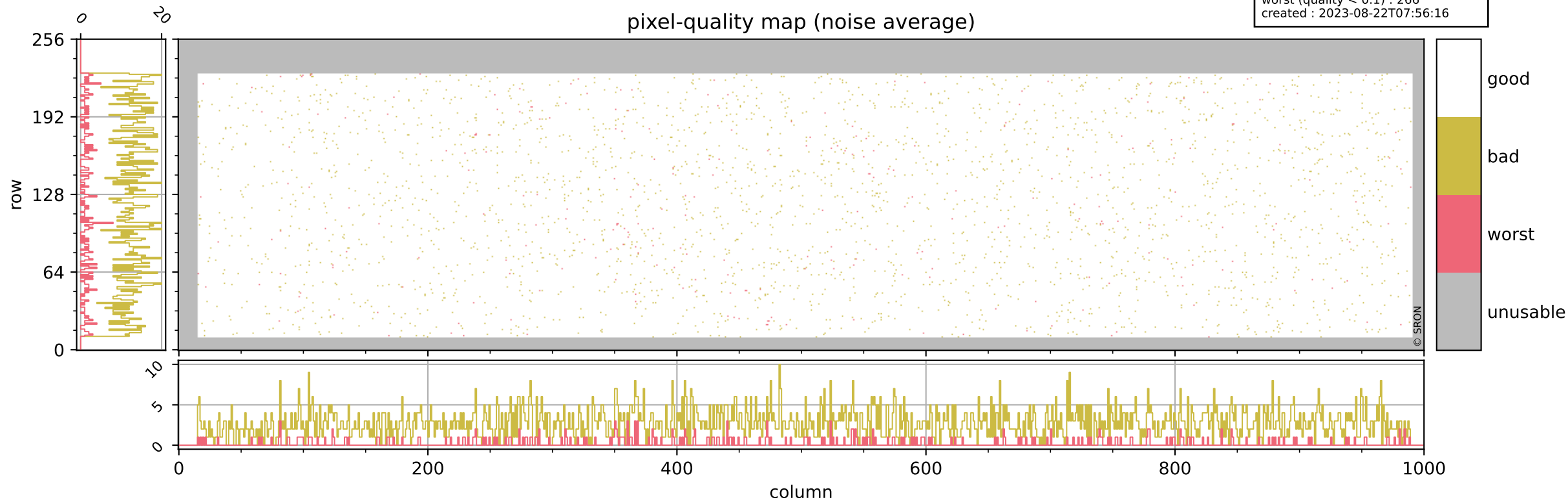
Tropomi SWIR pixel quality (official)

orbits : 20 in [8452, 8497]
coverage : 2019-06-01 / 2019-06-04
bad (quality < 0.8) : 293
worst (quality < 0.1) : 117
created : 2023-08-22T07:56:16



Tropomi SWIR pixel quality (official)

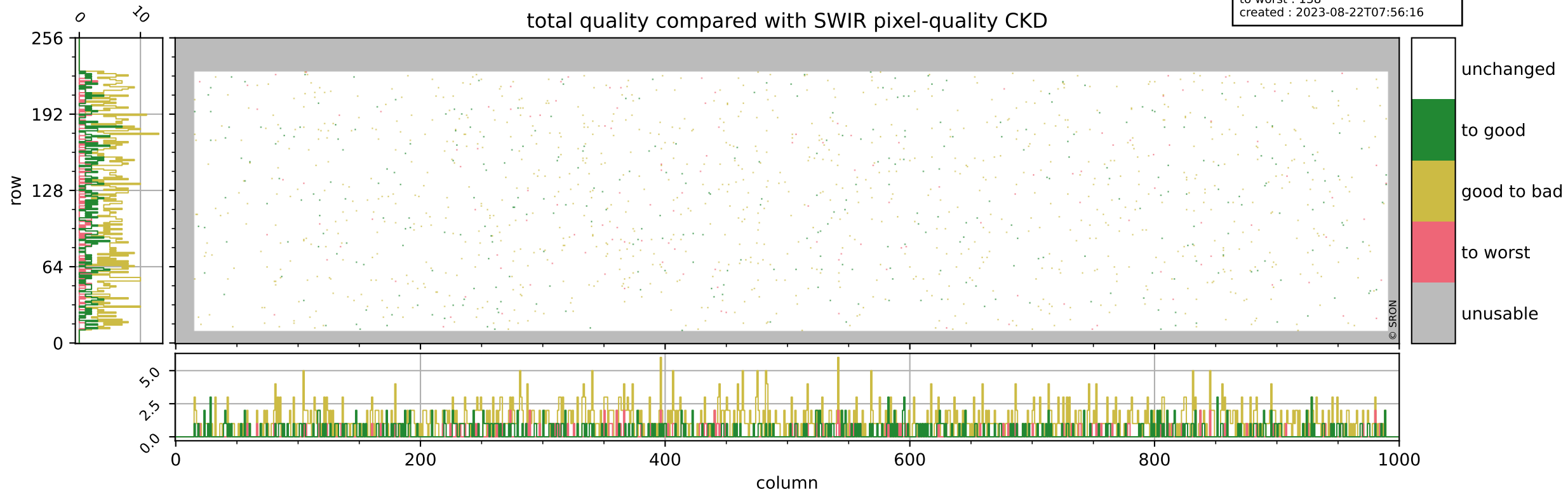
orbits : 20 in [8452, 8497]
coverage : 2019-06-01 / 2019-06-04
bad (quality < 0.8) : 2758
worst (quality < 0.1) : 266
created : 2023-08-22T07:56:16



Tropomi SWIR pixel quality (official)

orbits : 20 in [8452, 8497]
coverage : 2019-06-01 / 2019-06-04
to good : 344
good to bad : 971
to worst : 138
created : 2023-08-22T07:56:16

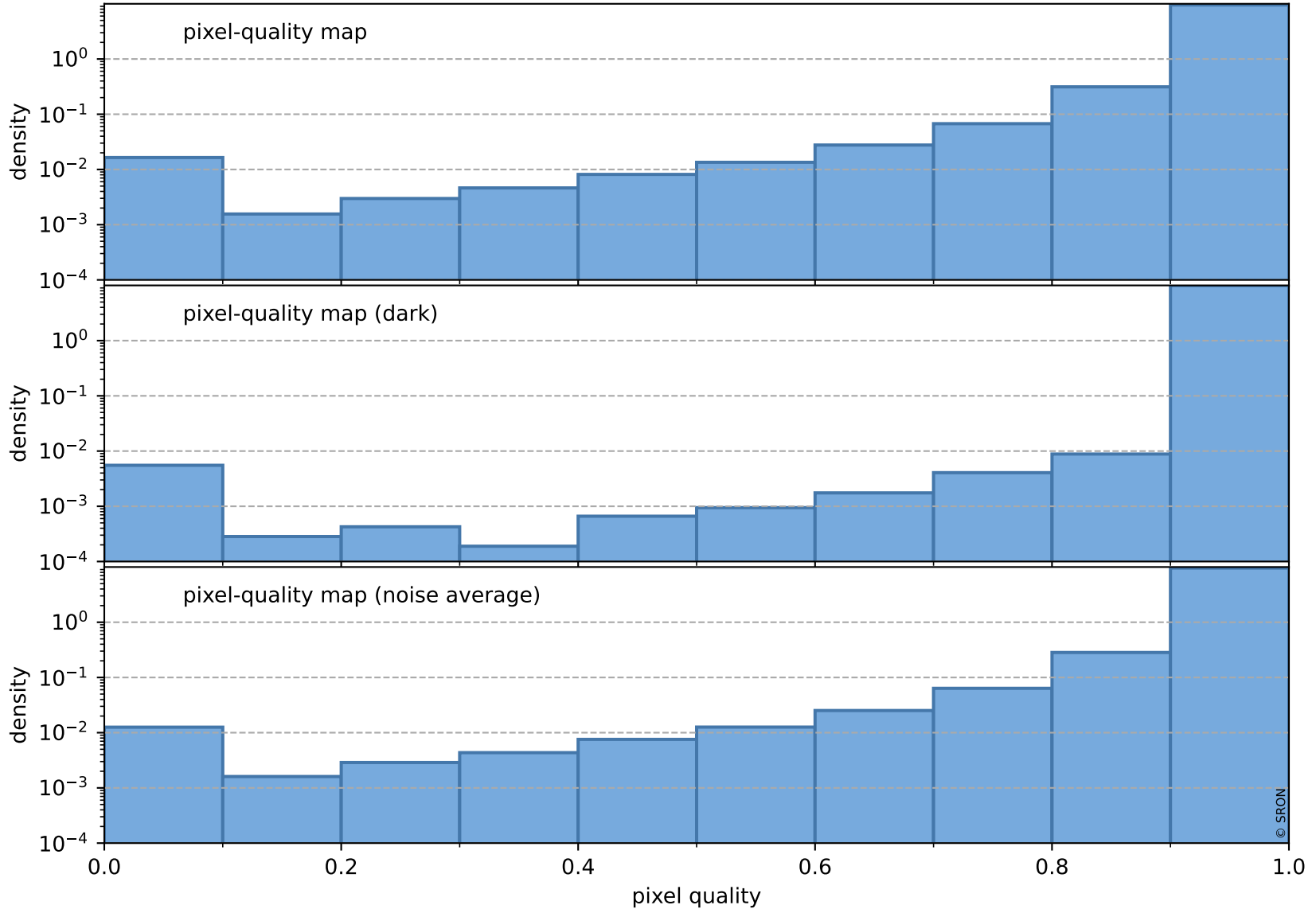
total quality compared with SWIR pixel-quality CKD



Tropomi SWIR pixel quality (official)

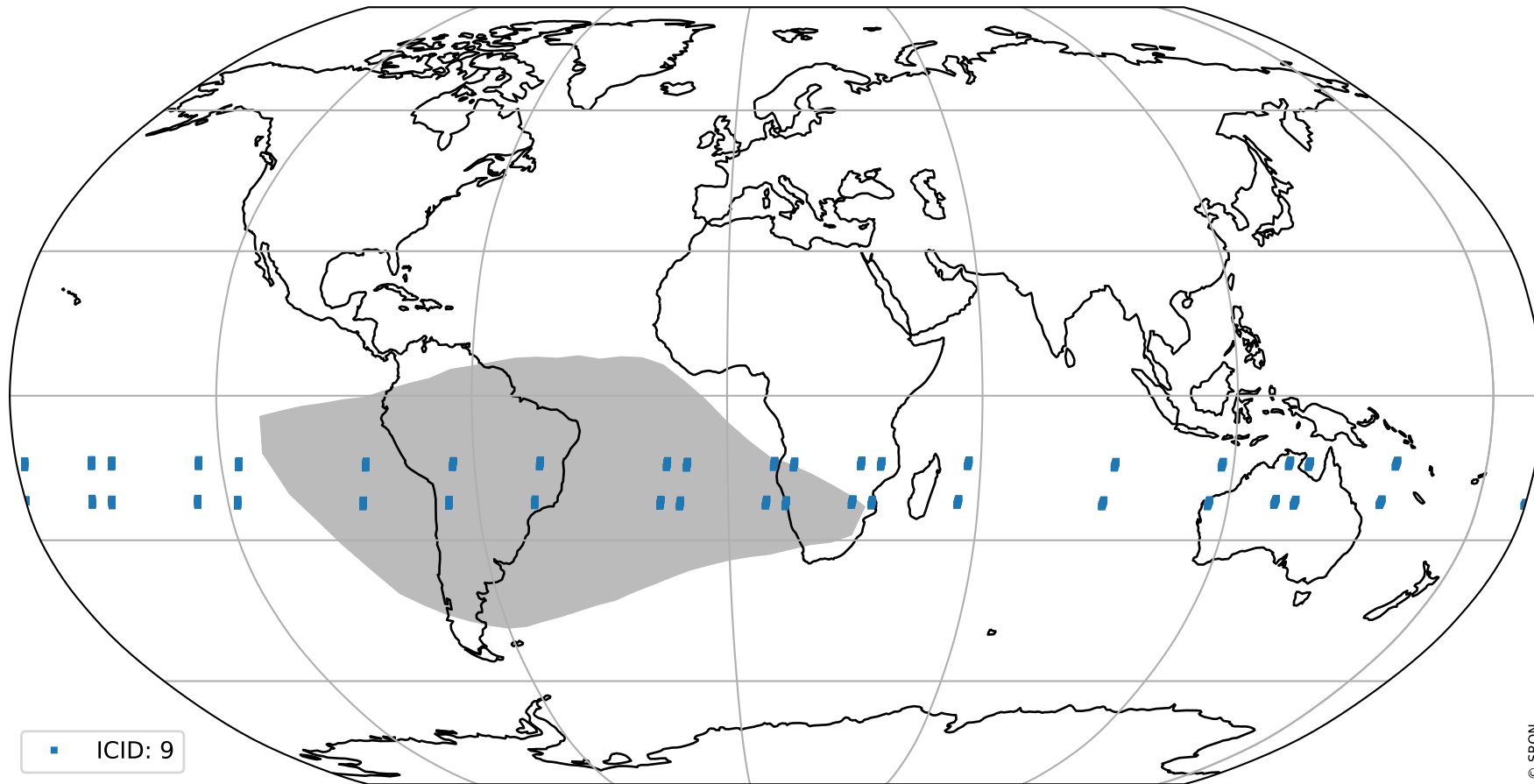
orbits : 20 in [8452, 8497]
coverage : 2019-06-01 / 2019-06-04
created : 2023-08-22T07:56:16

Histograms of pixel-quality



Tropomi SWIR pixel quality (official) ground-tracks of Sentinel-5P

orbits : 20 in [8452, 8497]
coverage : 2019-06-01 / 2019-06-04
created : 2023-08-22T07:56:17



Tropomi SWIR pixel quality (official)

orbits : [2827, 8497]
coverage : 2018-04-30 / 2019-06-04
created : 2023-08-22T07:56:17

trend of pixel quality & temperatures

