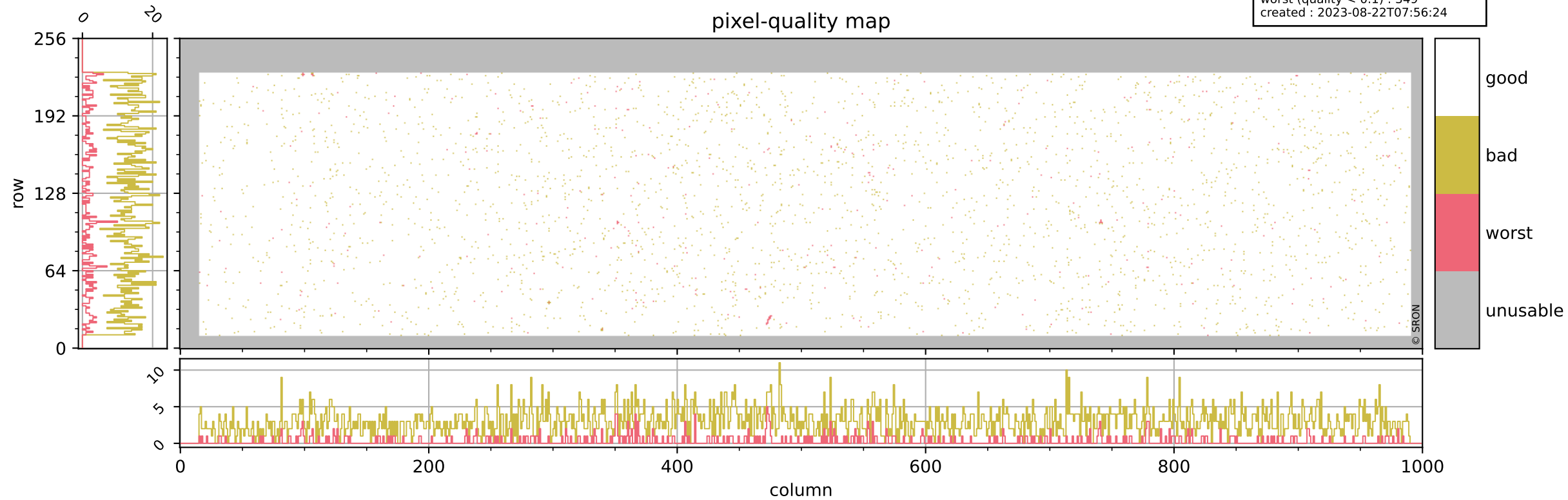


Tropomi SWIR pixel quality (official)

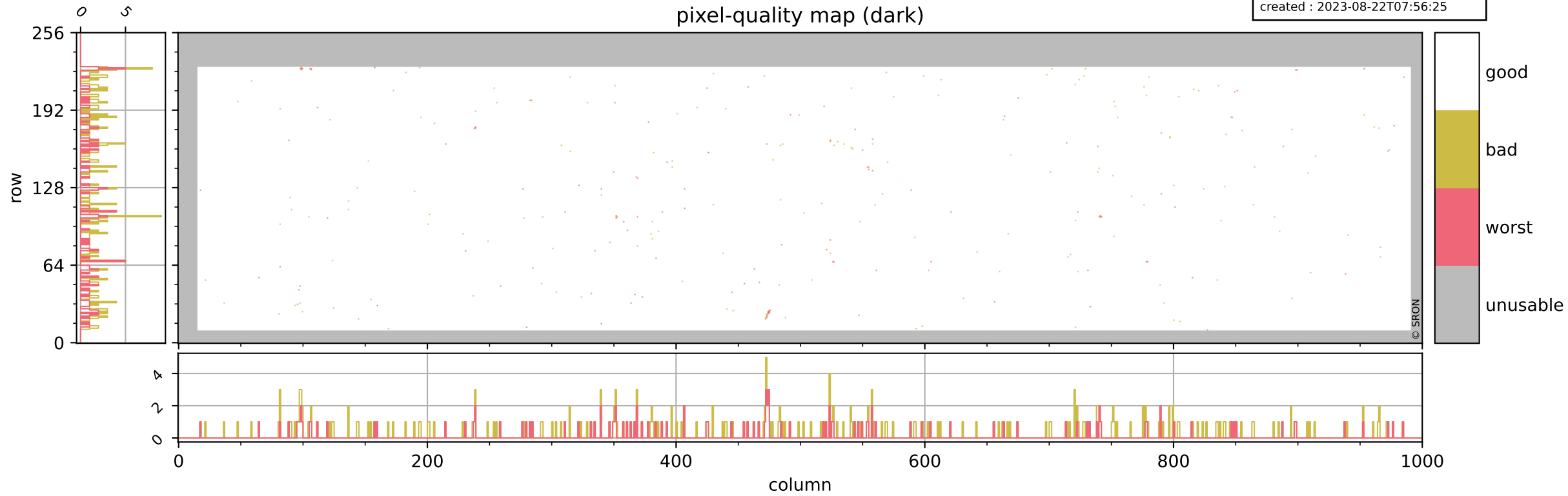
orbits : 20 in [8512, 8557]
coverage : 2019-06-05 / 2019-06-08
bad (quality < 0.8) : 2980
worst (quality < 0.1) : 349
created : 2023-08-22T07:56:24



Tropomi SWIR pixel quality (official)

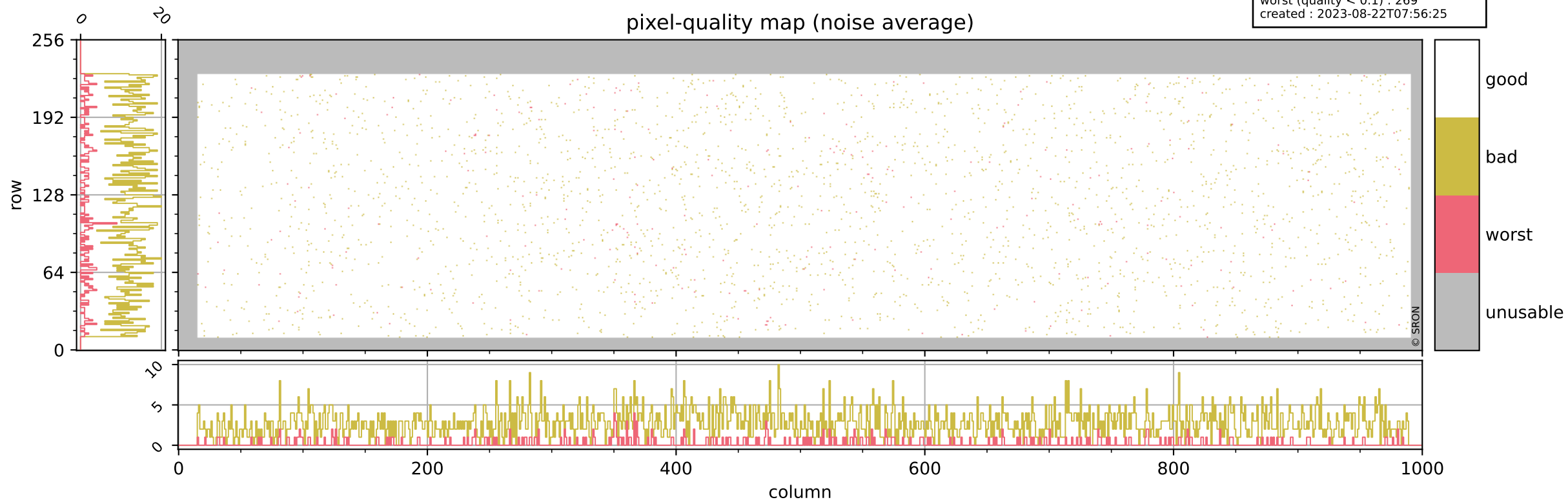
orbits : 20 in [8512, 8557]
coverage : 2019-06-05 / 2019-06-08
bad (quality < 0.8) : 291
worst (quality < 0.1) : 114
created : 2023-08-22T07:56:25

pixel-quality map (dark)



Tropomi SWIR pixel quality (official)

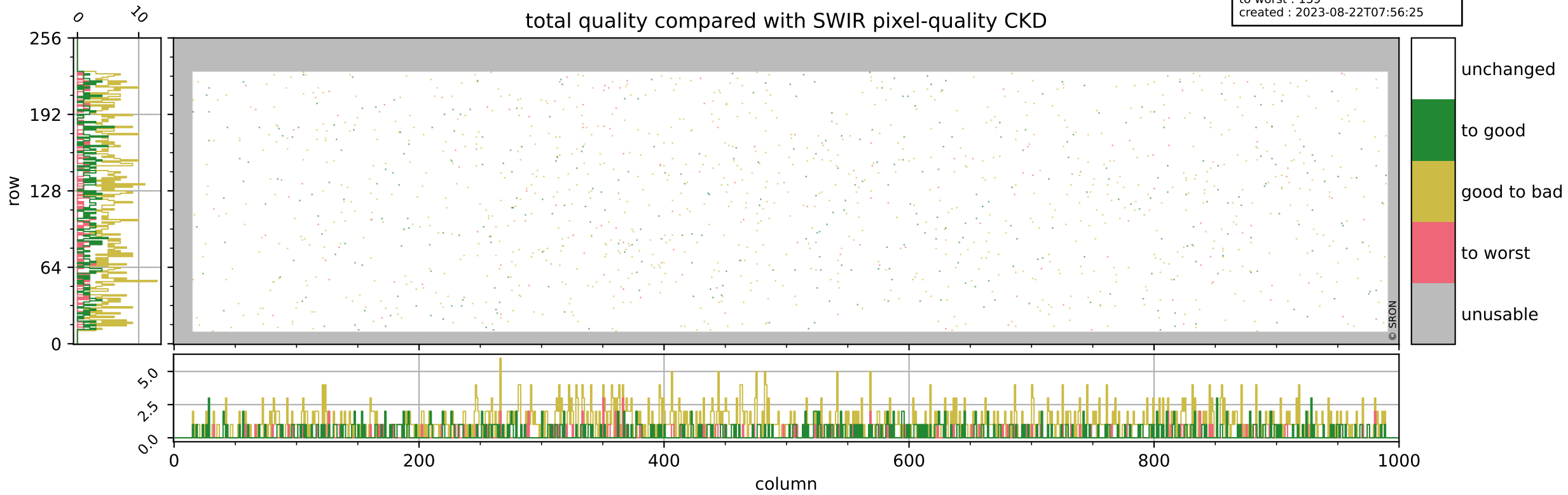
orbits : 20 in [8512, 8557]
coverage : 2019-06-05 / 2019-06-08
bad (quality < 0.8) : 2736
worst (quality < 0.1) : 269
created : 2023-08-22T07:56:25



Tropomi SWIR pixel quality (official)

orbits : 20 in [8512, 8557]
coverage : 2019-06-05 / 2019-06-08
to good : 353
good to bad : 941
to worst : 139
created : 2023-08-22T07:56:25

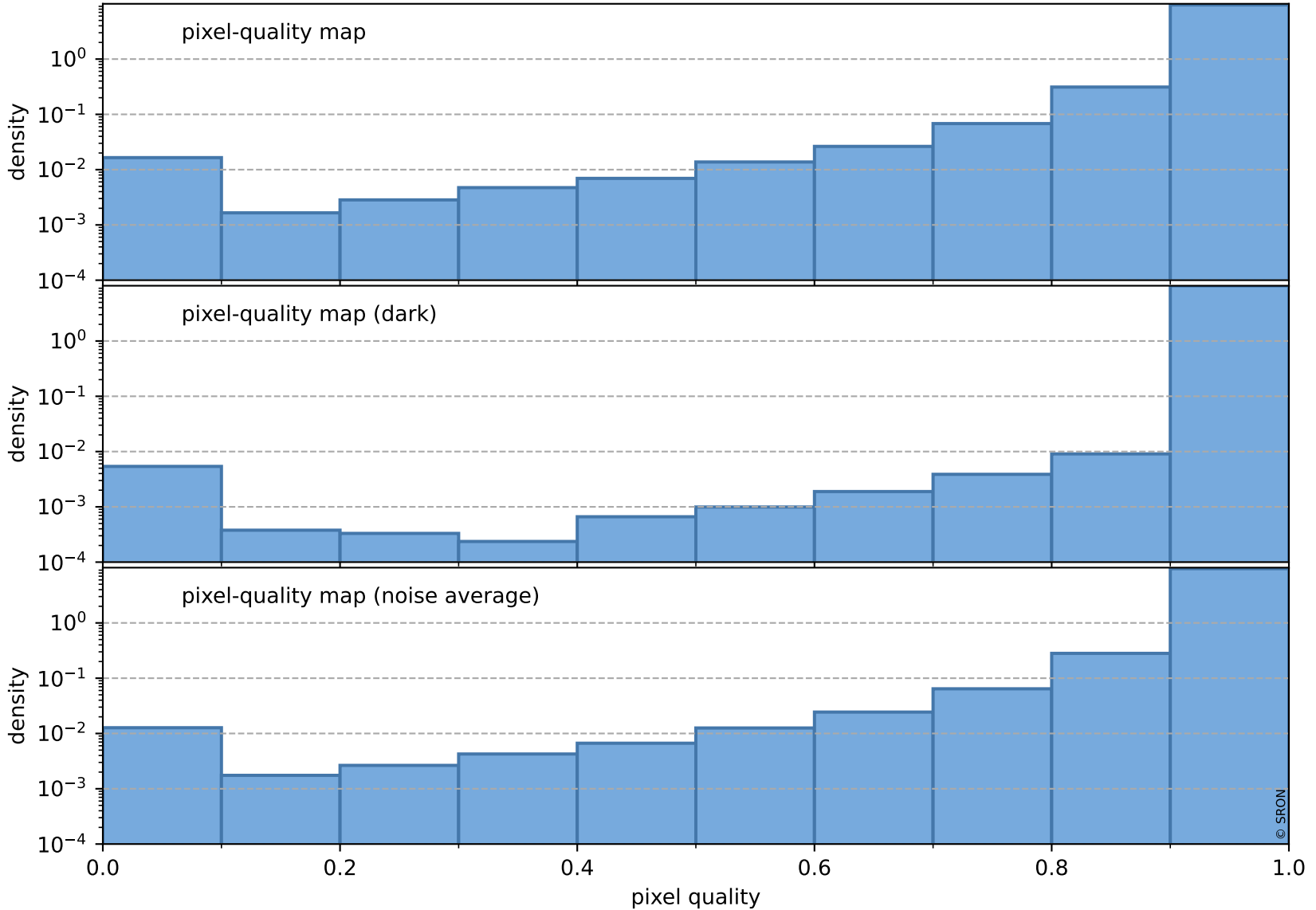
total quality compared with SWIR pixel-quality CKD



Tropomi SWIR pixel quality (official)

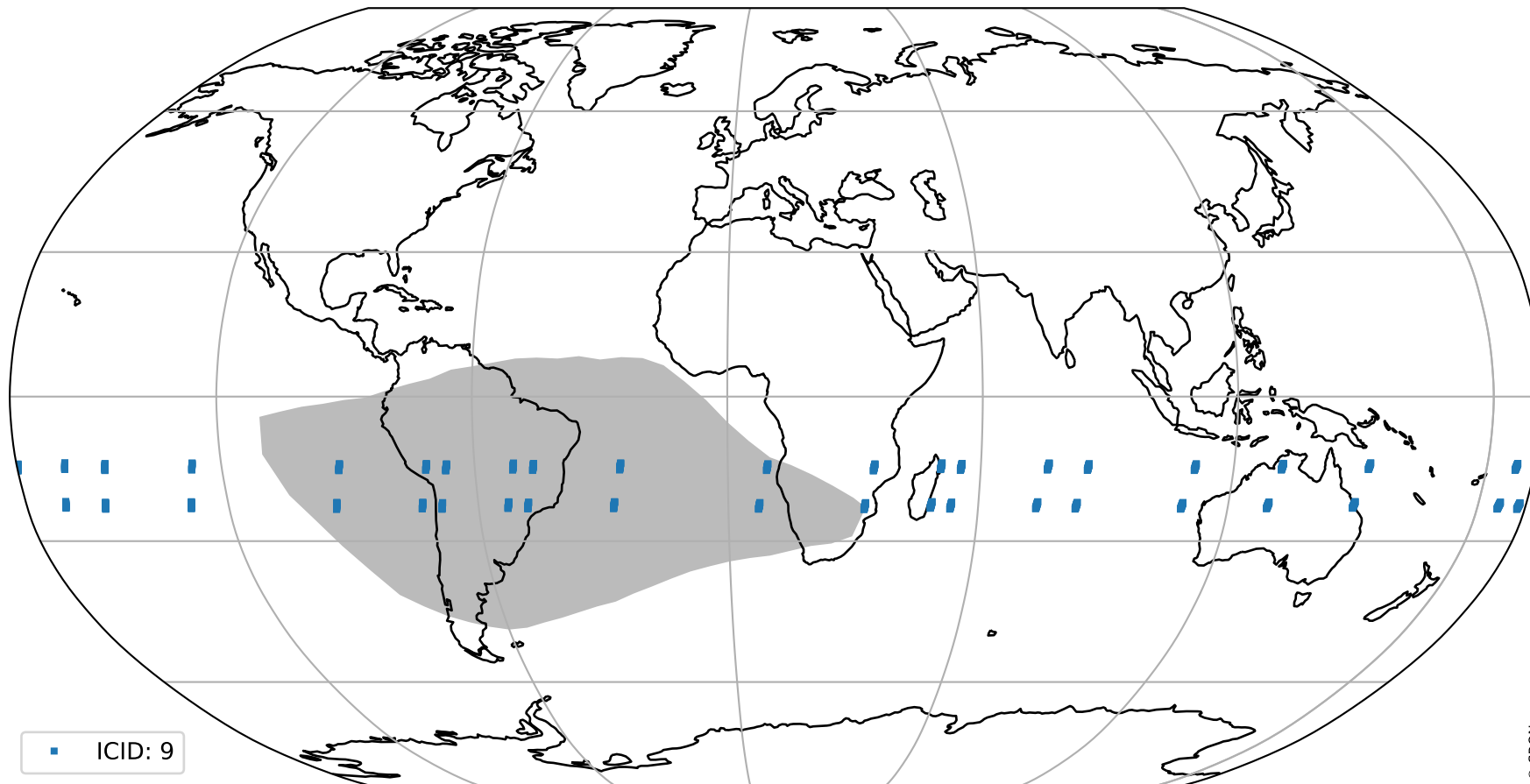
orbits : 20 in [8512, 8557]
coverage : 2019-06-05 / 2019-06-08
created : 2023-08-22T07:56:25

Histograms of pixel-quality



Tropomi SWIR pixel quality (official) ground-tracks of Sentinel-5P

orbits : 20 in [8512, 8557]
coverage : 2019-06-05 / 2019-06-08
created : 2023-08-22T07:56:26



Tropomi SWIR pixel quality (official)

orbits : [2827, 8557]
coverage : 2018-04-30 / 2019-06-08
created : 2023-08-22T07:56:26

trend of pixel quality & temperatures

