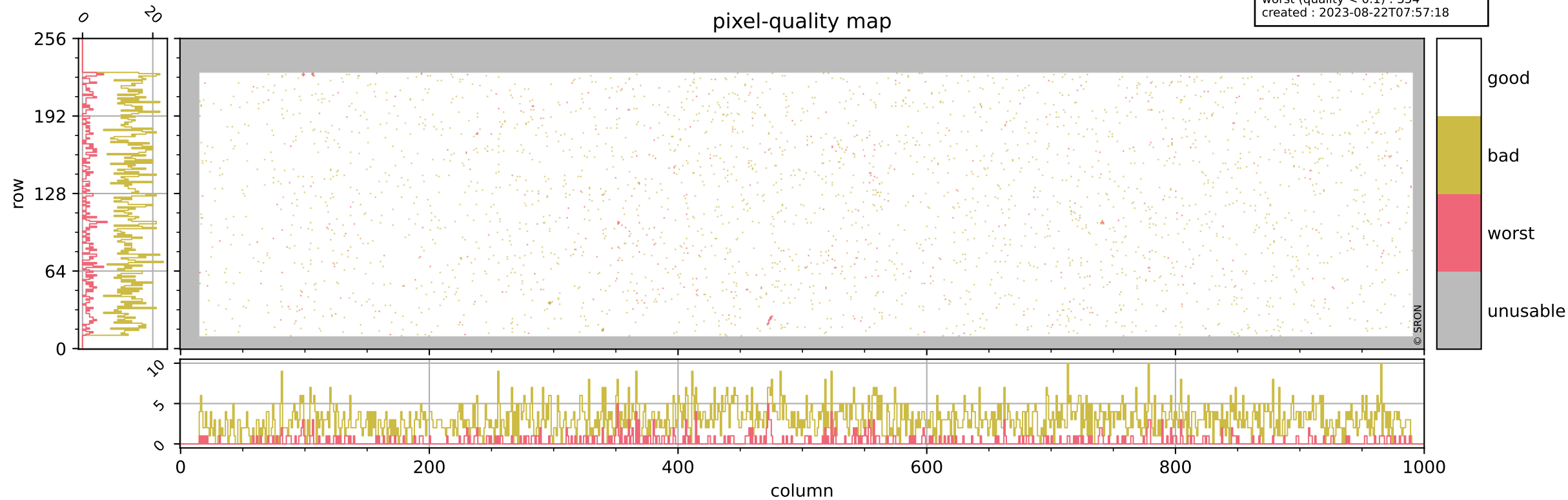


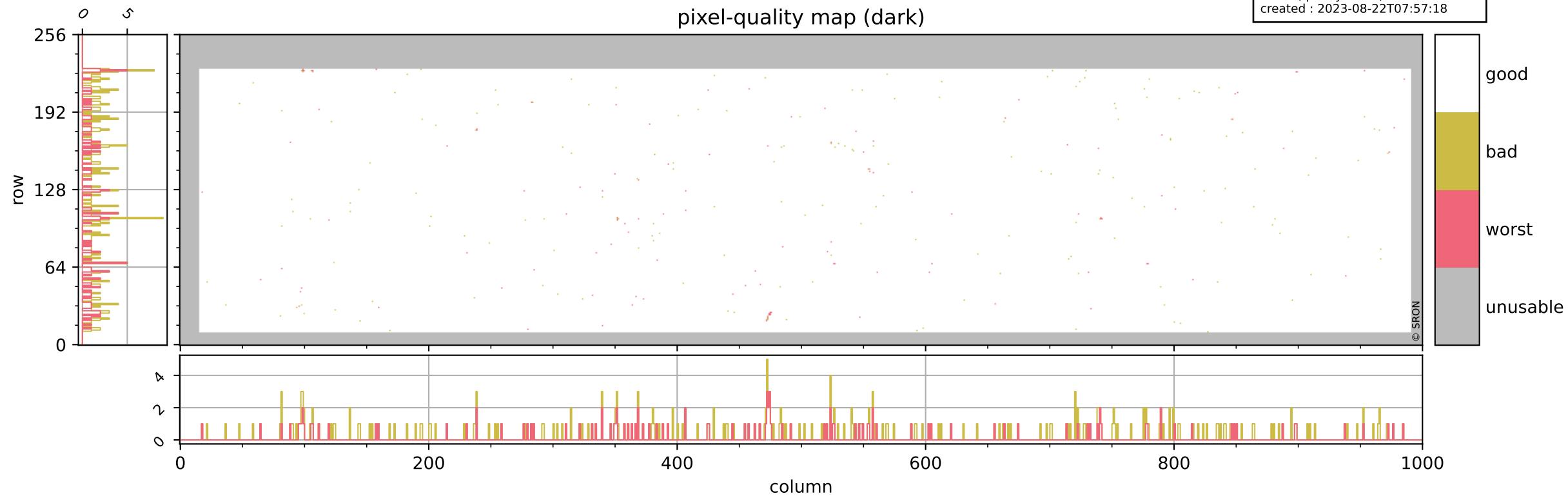
Tropomi SWIR pixel quality (official)

orbits : 20 in [8872, 8917]
coverage : 2019-06-30 / 2019-07-03
bad (quality < 0.8) : 3011
worst (quality < 0.1) : 354
created : 2023-08-22T07:57:18



Tropomi SWIR pixel quality (official)

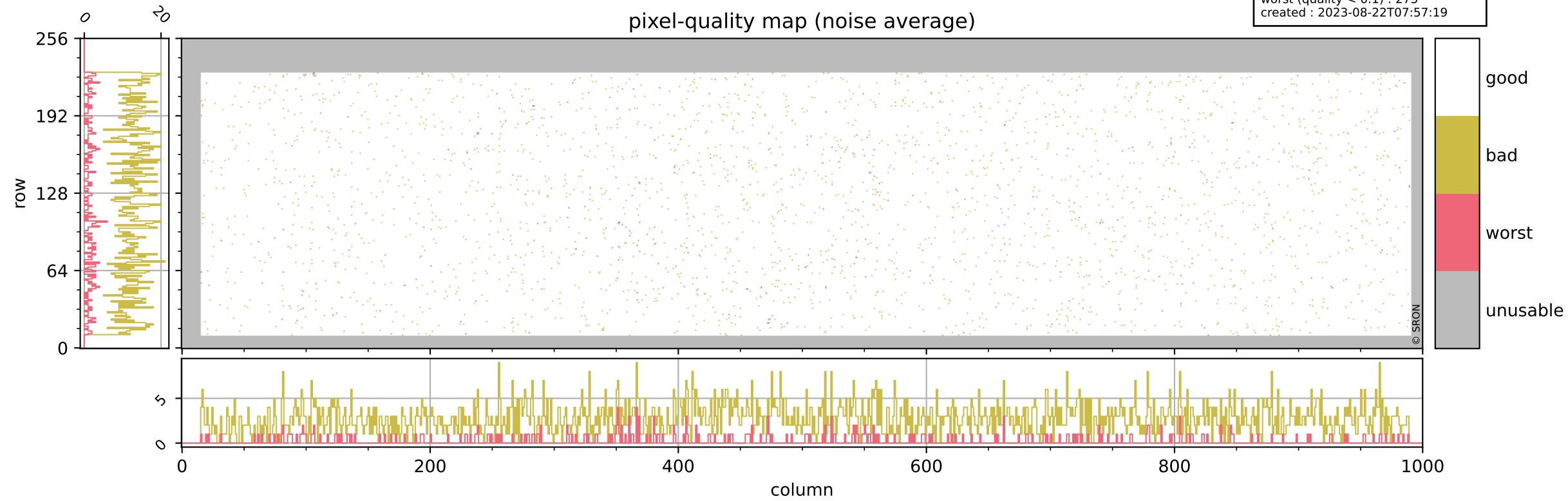
orbits : 20 in [8872, 8917]
coverage : 2019-06-30 / 2019-07-03
bad (quality < 0.8) : 293
worst (quality < 0.1) : 114
created : 2023-08-22T07:57:18



Tropomi SWIR pixel quality (official)

orbits : 20 in [8872, 8917]
coverage : 2019-06-30 / 2019-07-03
bad (quality < 0.8) : 2760
worst (quality < 0.1) : 275
created : 2023-08-22T07:57:19

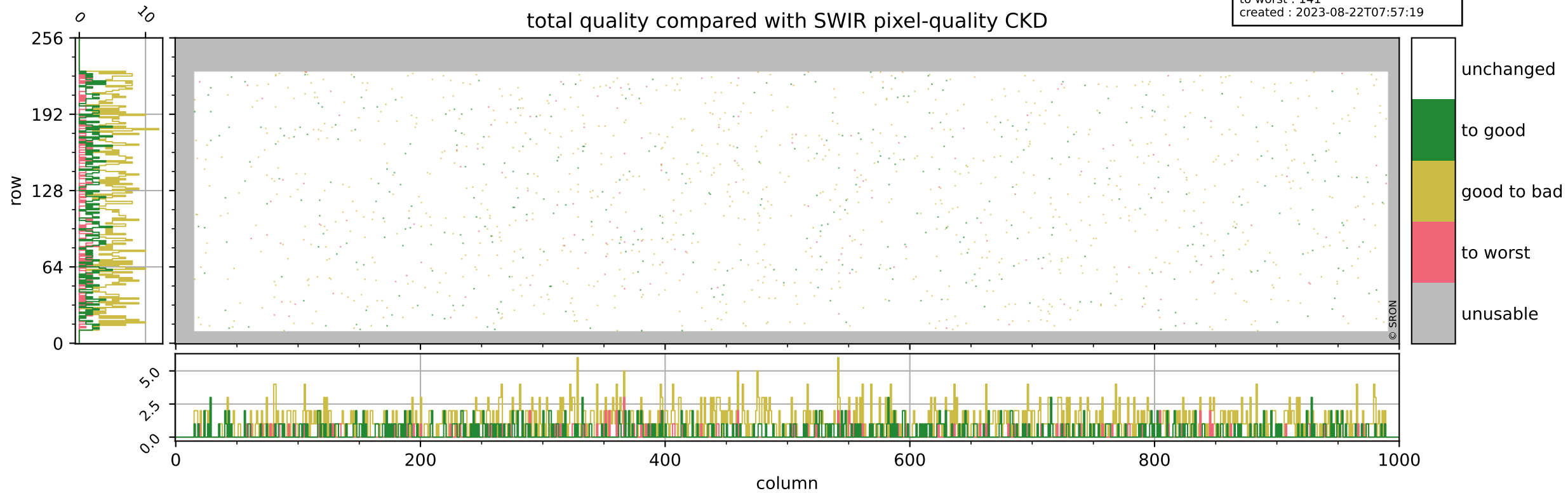
pixel-quality map (noise average)



Tropomi SWIR pixel quality (official)

orbits : 20 in [8872, 8917]
coverage : 2019-06-30 / 2019-07-03
to good : 368
good to bad : 986
to worst : 141
created : 2023-08-22T07:57:19

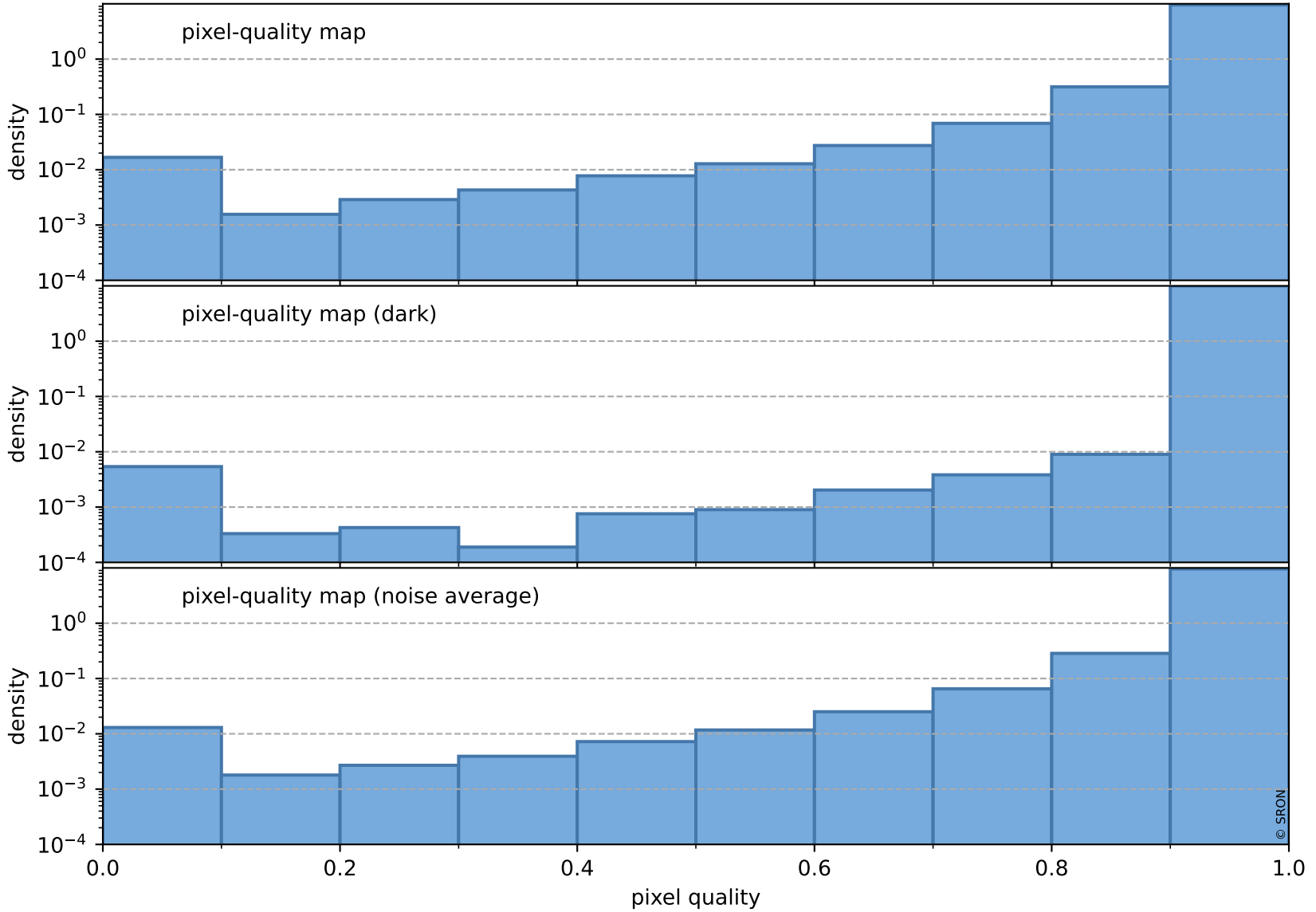
total quality compared with SWIR pixel-quality CKD



Tropomi SWIR pixel quality (official)

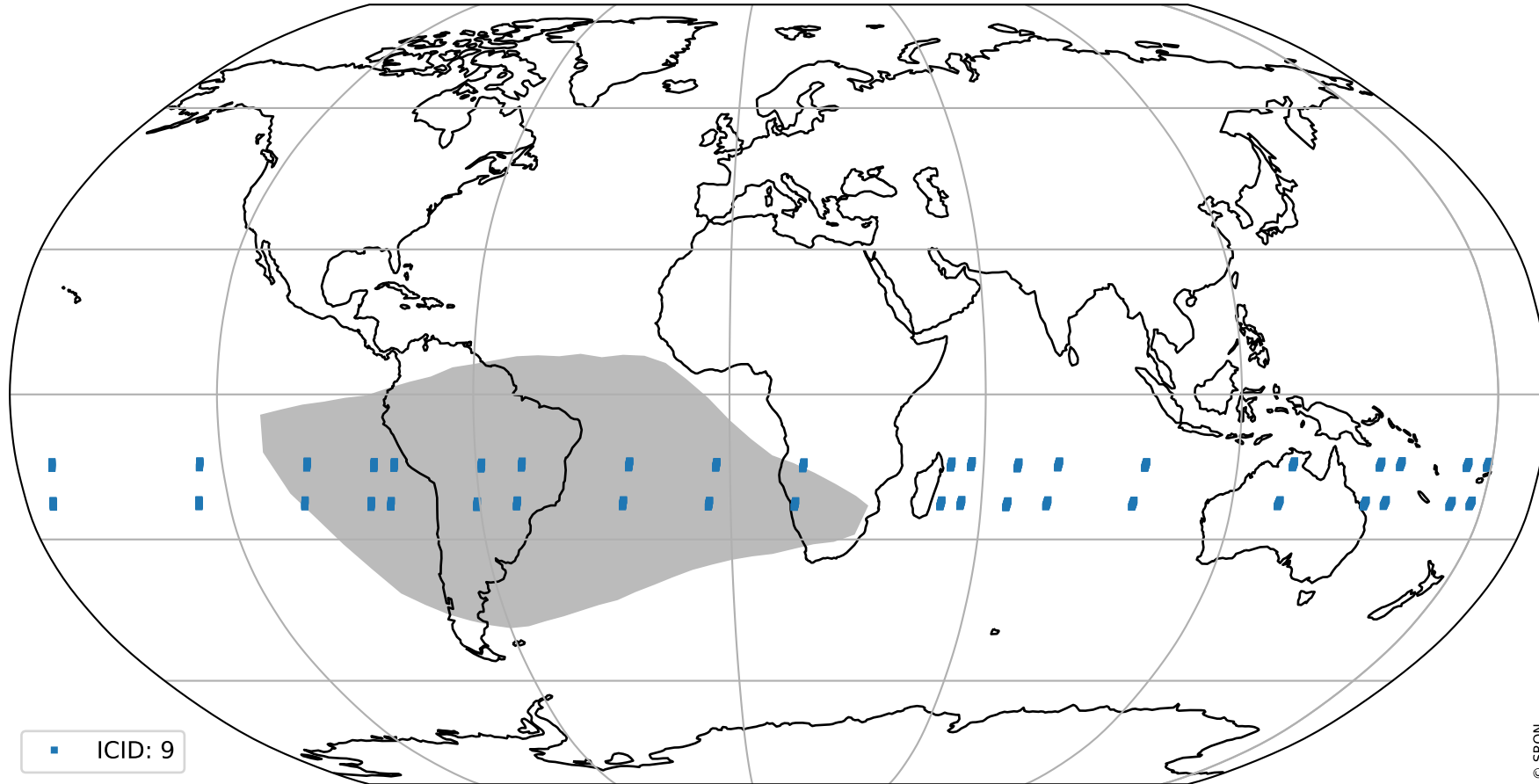
orbits : 20 in [8872, 8917]
coverage : 2019-06-30 / 2019-07-03
created : 2023-08-22T07:57:19

Histograms of pixel-quality



Tropomi SWIR pixel quality (official) ground-tracks of Sentinel-5P

orbits : 20 in [8872, 8917]
coverage : 2019-06-30 / 2019-07-03
created : 2023-08-22T07:57:19



Tropomi SWIR pixel quality (official)

orbits : [2827, 8917]
coverage : 2018-04-30 / 2019-07-03
created : 2023-08-22T07:57:20

trend of pixel quality & temperatures

