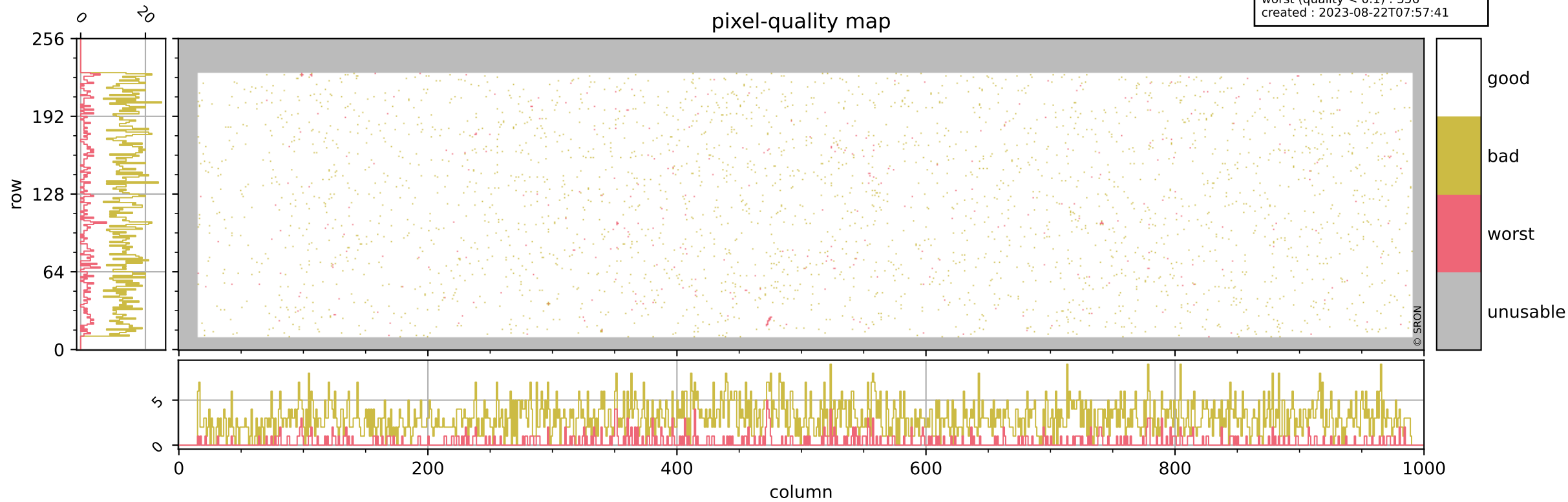


# Tropomi SWIR pixel quality (official)

orbits : 20 in [9022, 9067]  
coverage : 2019-07-11 / 2019-07-14  
bad (quality < 0.8) : 3043  
worst (quality < 0.1) : 356  
created : 2023-08-22T07:57:41

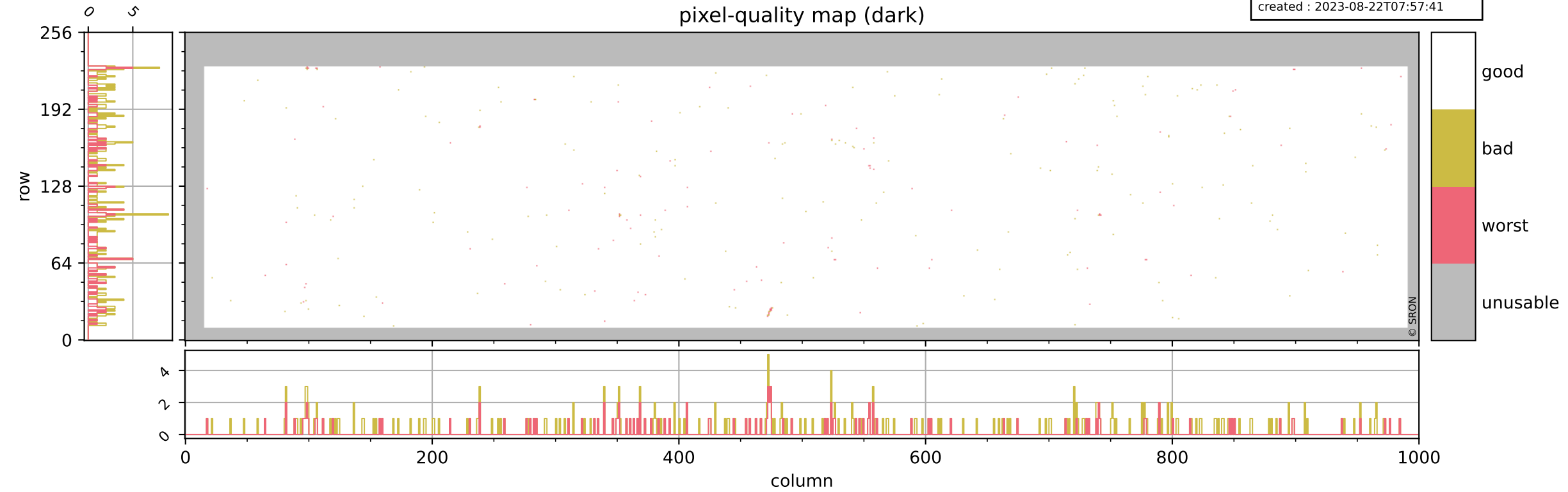
## pixel-quality map



# Tropomi SWIR pixel quality (official)

orbits : 20 in [9022, 9067]  
coverage : 2019-07-11 / 2019-07-14  
bad (quality < 0.8) : 294  
worst (quality < 0.1) : 114  
created : 2023-08-22T07:57:41

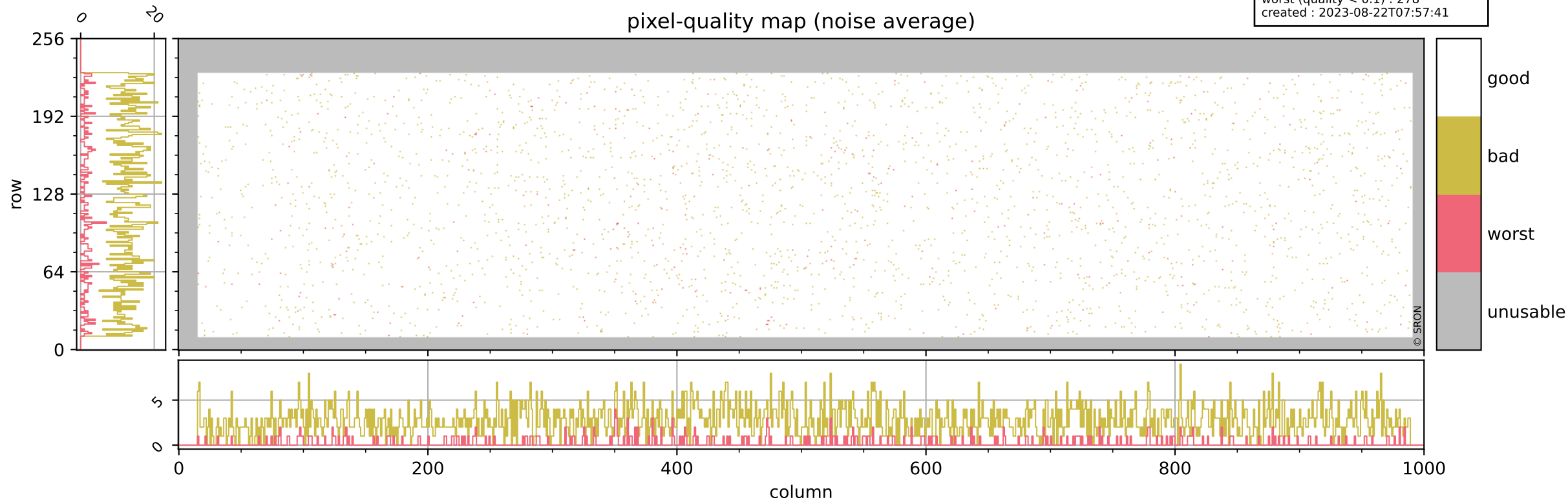
## pixel-quality map (dark)



# Tropomi SWIR pixel quality (official)

orbits : 20 in [9022, 9067]  
coverage : 2019-07-11 / 2019-07-14  
bad (quality < 0.8) : 2791  
worst (quality < 0.1) : 278  
created : 2023-08-22T07:57:41

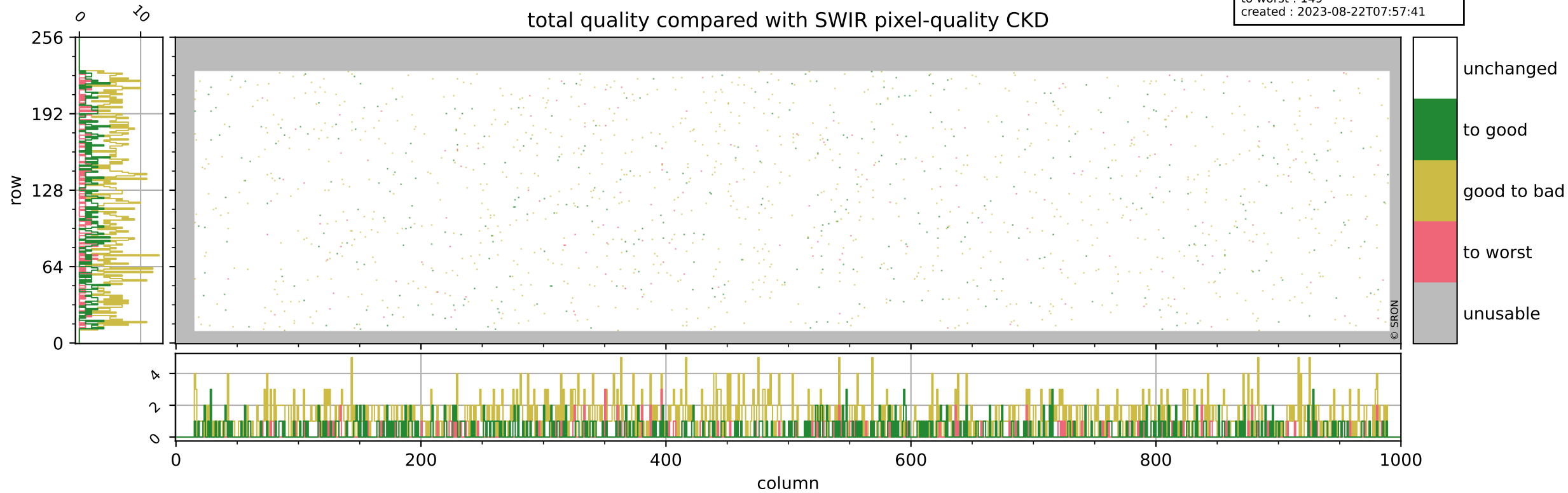
## pixel-quality map (noise average)



# Tropomi SWIR pixel quality (official)

orbits : 20 in [9022, 9067]  
coverage : 2019-07-11 / 2019-07-14  
to good : 369  
good to bad : 1011  
to worst : 149  
created : 2023-08-22T07:57:41

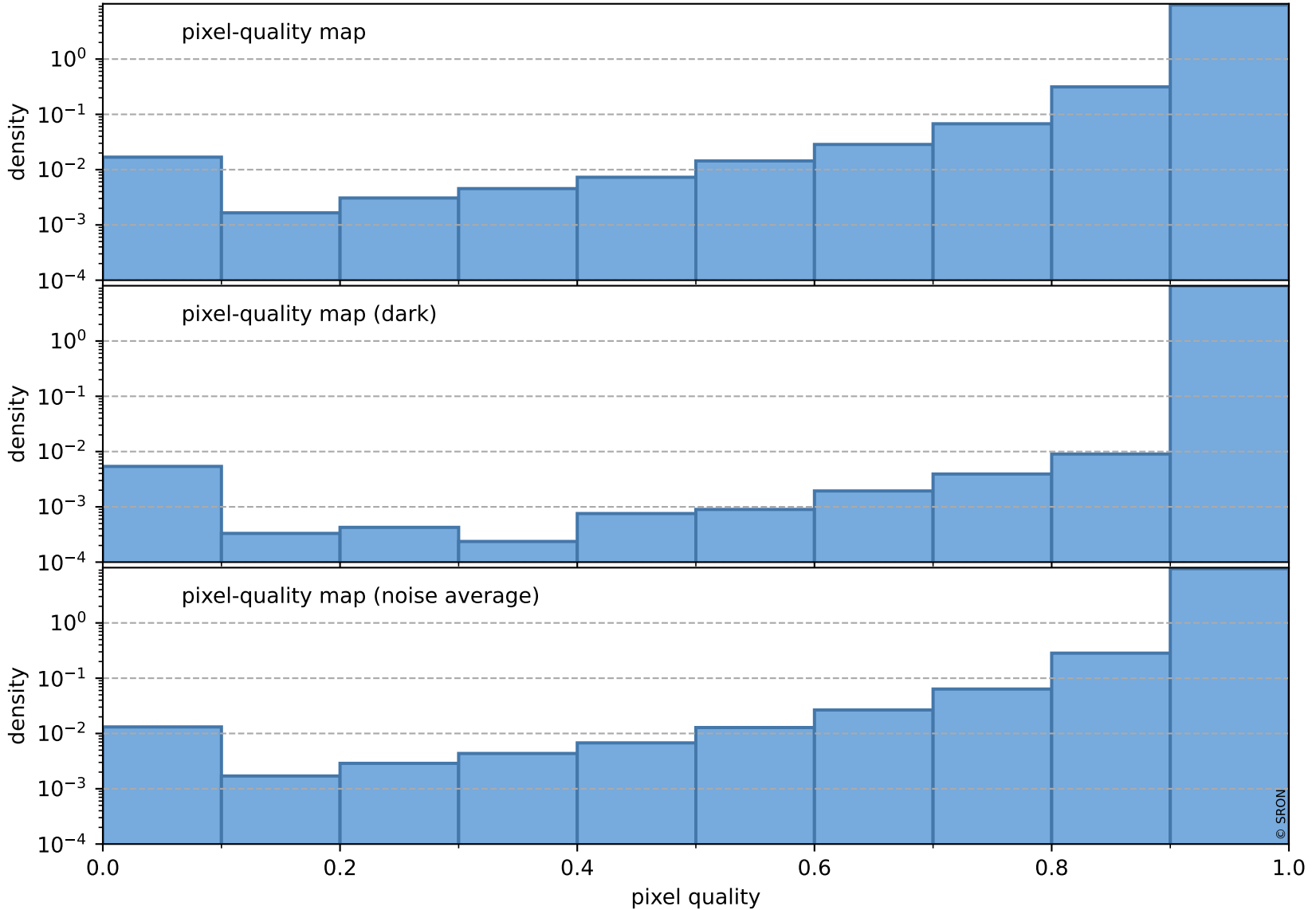
## total quality compared with SWIR pixel-quality CKD



# Tropomi SWIR pixel quality (official)

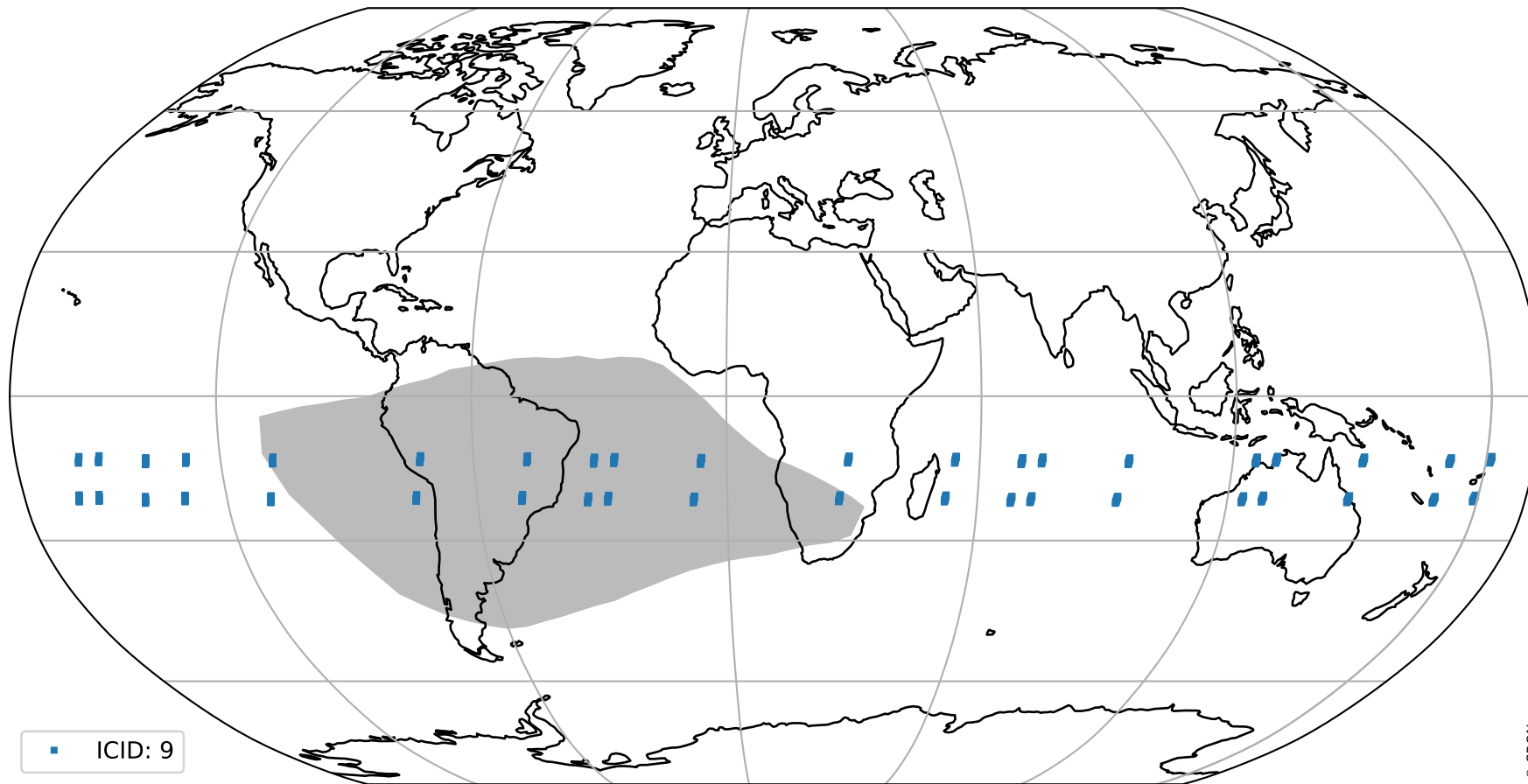
orbits : 20 in [9022, 9067]  
coverage : 2019-07-11 / 2019-07-14  
created : 2023-08-22T07:57:42

## Histograms of pixel-quality



# Tropomi SWIR pixel quality (official) ground-tracks of Sentinel-5P

orbits : 20 in [9022, 9067]  
coverage : 2019-07-11 / 2019-07-14  
created : 2023-08-22T07:57:42



# Tropomi SWIR pixel quality (official)

orbits : [2827, 9067]  
coverage : 2018-04-30 / 2019-07-14  
created : 2023-08-22T07:57:42

## trend of pixel quality & temperatures

