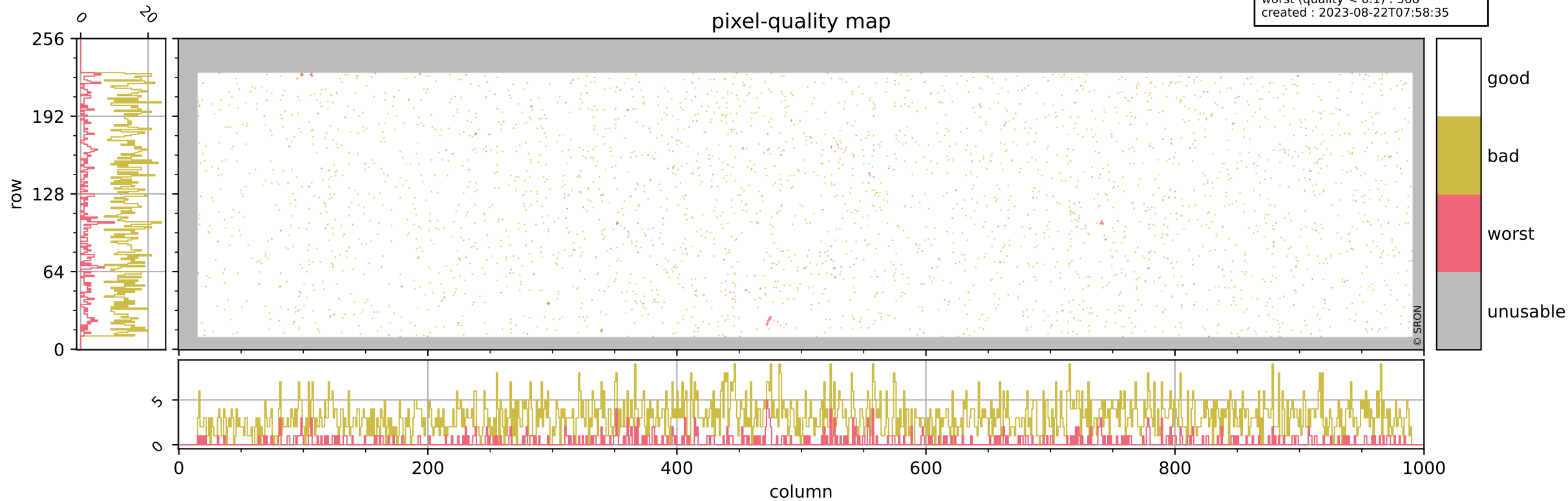


# Tropomi SWIR pixel quality (official)

orbits : 20 in [9382, 9427]  
coverage : 2019-08-05 / 2019-08-08  
bad (quality < 0.8) : 3077  
worst (quality < 0.1) : 368  
created : 2023-08-22T07:58:35

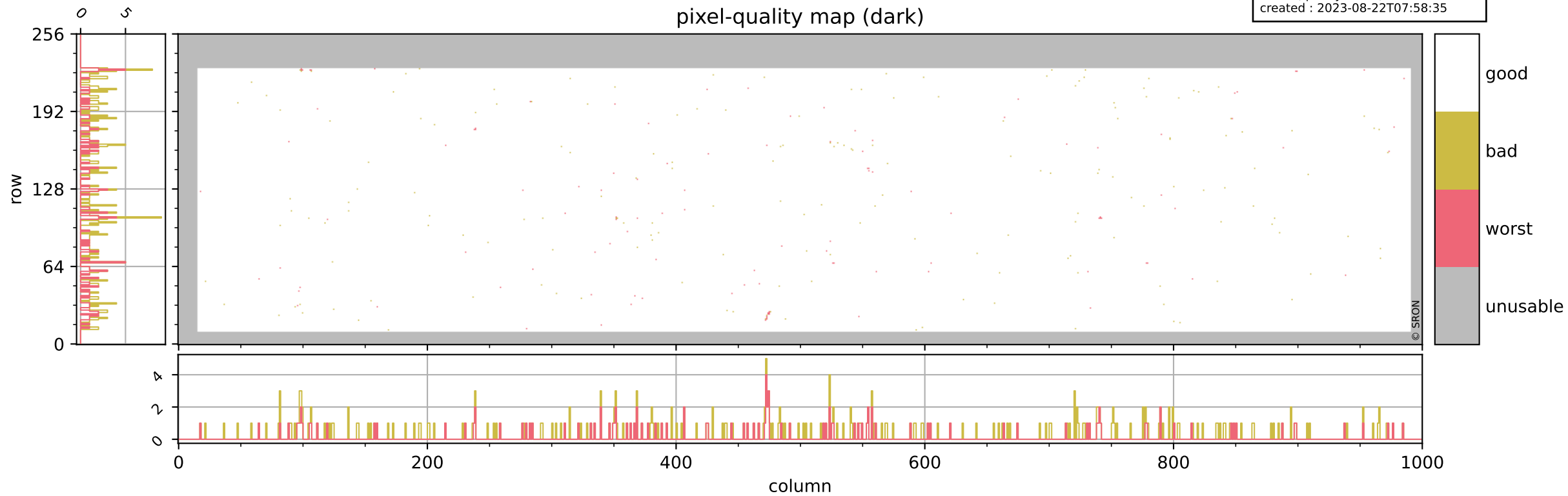
## pixel-quality map



# Tropomi SWIR pixel quality (official)

orbits : 20 in [9382, 9427]  
coverage : 2019-08-05 / 2019-08-08  
bad (quality < 0.8) : 293  
worst (quality < 0.1) : 114  
created : 2023-08-22T07:58:35

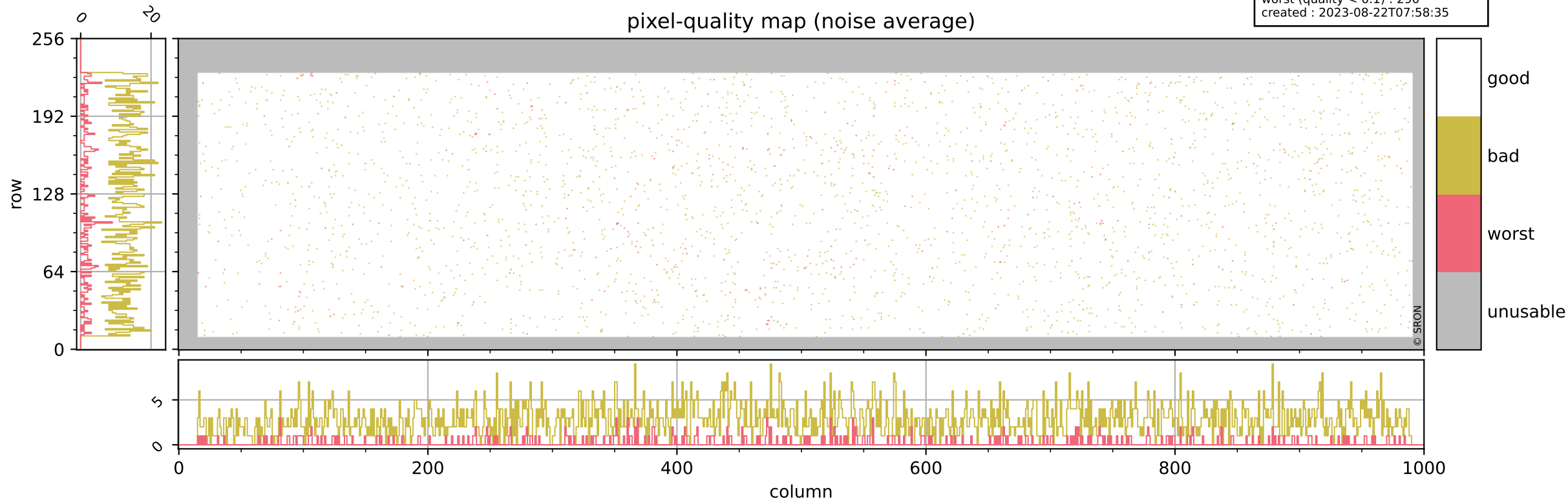
## pixel-quality map (dark)



# Tropomi SWIR pixel quality (official)

orbits : 20 in [9382, 9427]  
coverage : 2019-08-05 / 2019-08-08  
bad (quality < 0.8) : 2825  
worst (quality < 0.1) : 290  
created : 2023-08-22T07:58:35

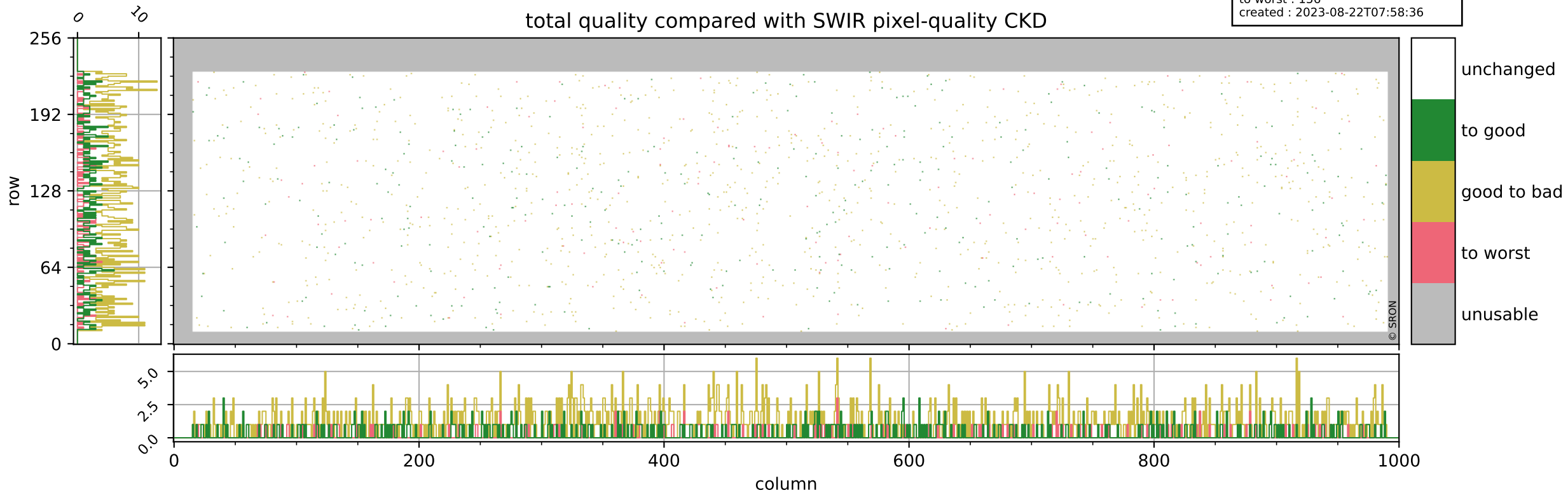
## pixel-quality map (noise average)



# Tropomi SWIR pixel quality (official)

orbits : 20 in [9382, 9427]  
coverage : 2019-08-05 / 2019-08-08  
to good : 357  
good to bad : 1031  
to worst : 156  
created : 2023-08-22T07:58:36

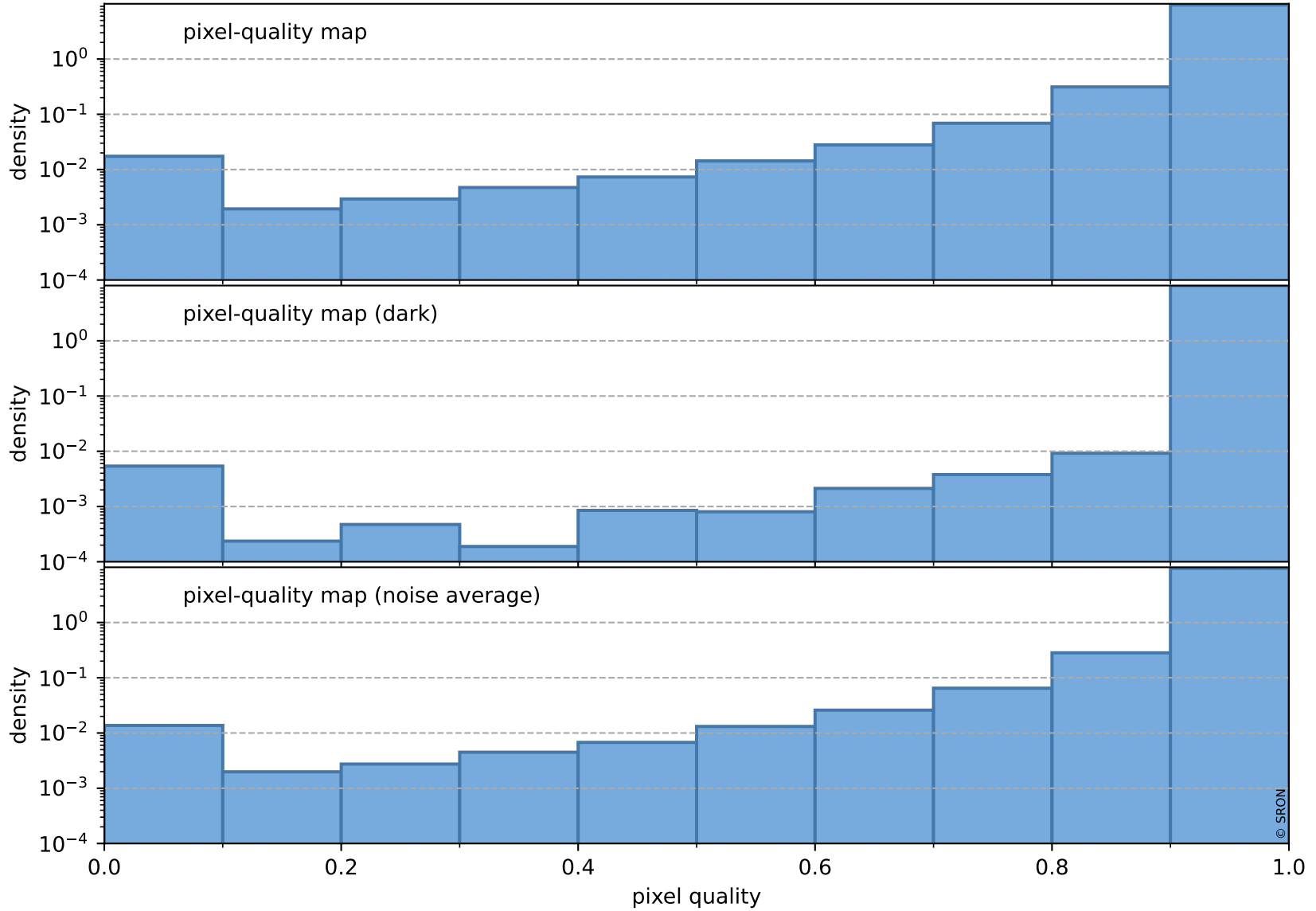
## total quality compared with SWIR pixel-quality CKD



# Tropomi SWIR pixel quality (official)

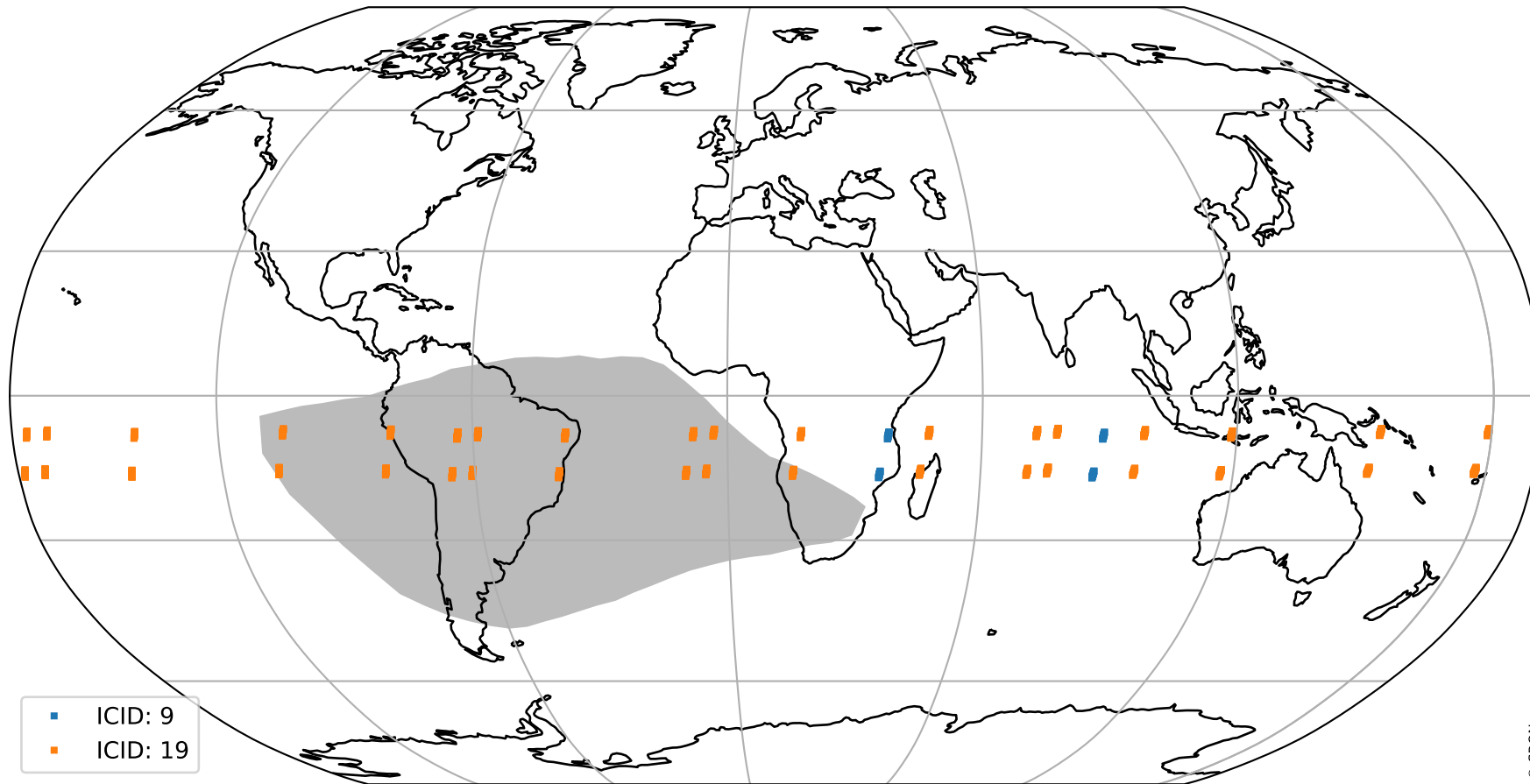
orbits : 20 in [9382, 9427]  
coverage : 2019-08-05 / 2019-08-08  
created : 2023-08-22T07:58:36

## Histograms of pixel-quality



# Tropomi SWIR pixel quality (official) ground-tracks of Sentinel-5P

orbits : 20 in [9382, 9427]  
coverage : 2019-08-05 / 2019-08-08  
created : 2023-08-22T07:58:36



# Tropomi SWIR pixel quality (official)

orbits : [2827, 9427]  
coverage : 2018-04-30 / 2019-08-08  
created : 2023-08-22T07:58:37

## trend of pixel quality & temperatures

