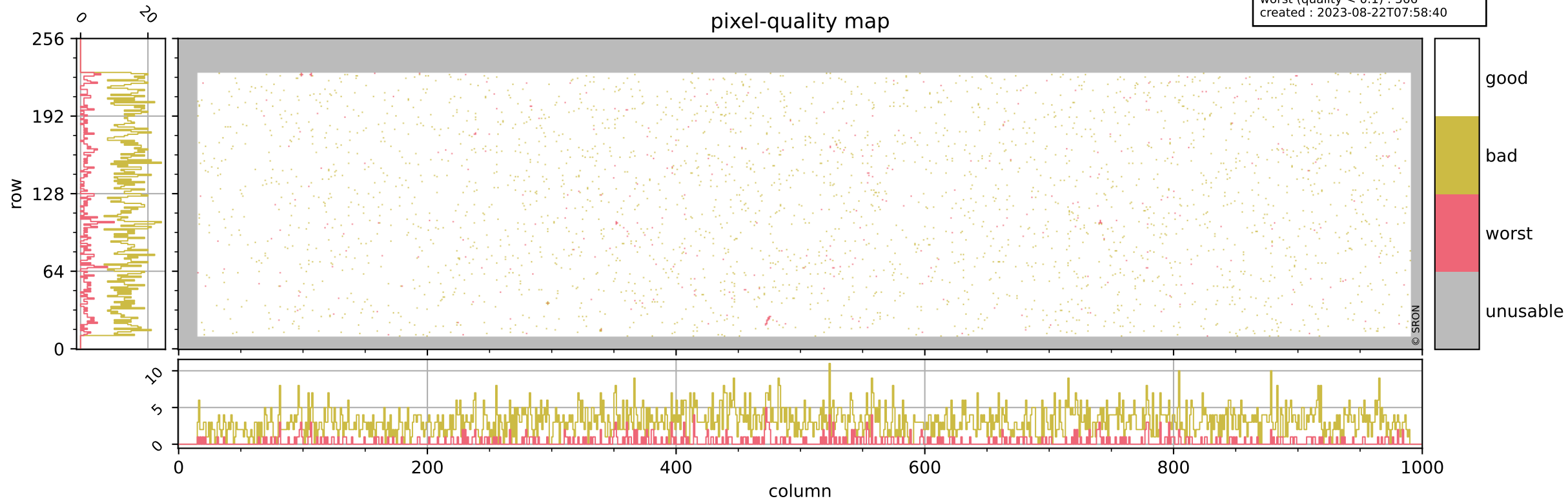


# Tropomi SWIR pixel quality (official)

orbits : 20 in [9412, 9457]  
coverage : 2019-08-07 / 2019-08-10  
bad (quality < 0.8) : 3095  
worst (quality < 0.1) : 366  
created : 2023-08-22T07:58:40

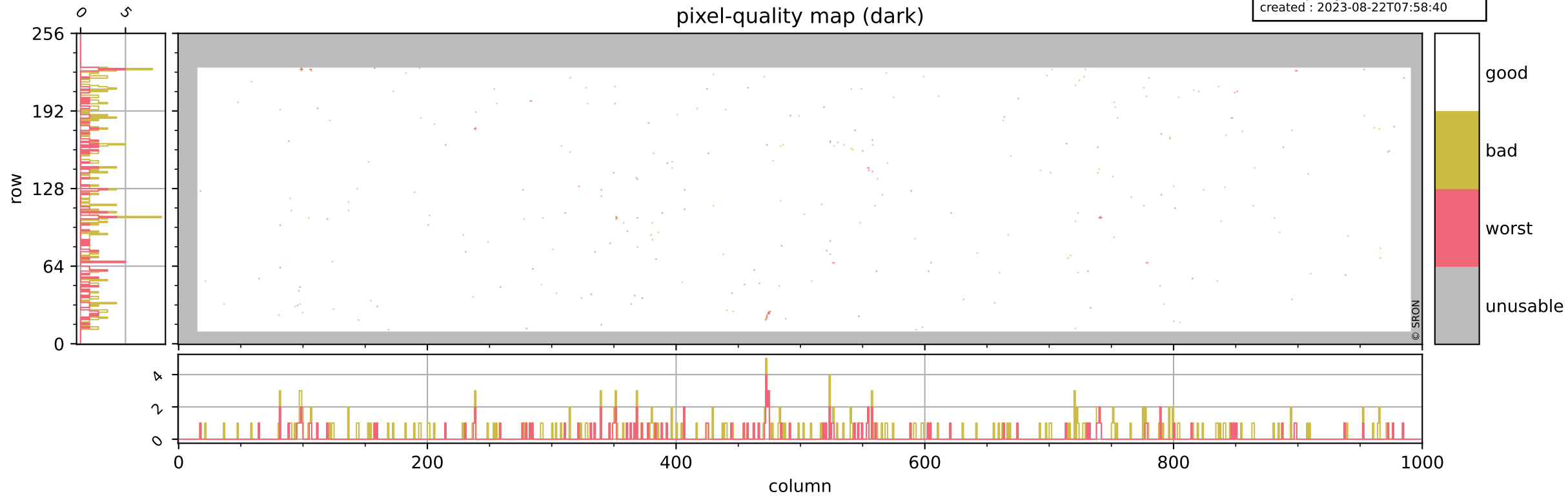
## pixel-quality map



# Tropomi SWIR pixel quality (official)

orbits : 20 in [9412, 9457]  
coverage : 2019-08-07 / 2019-08-10  
bad (quality < 0.8) : 291  
worst (quality < 0.1) : 115  
created : 2023-08-22T07:58:40

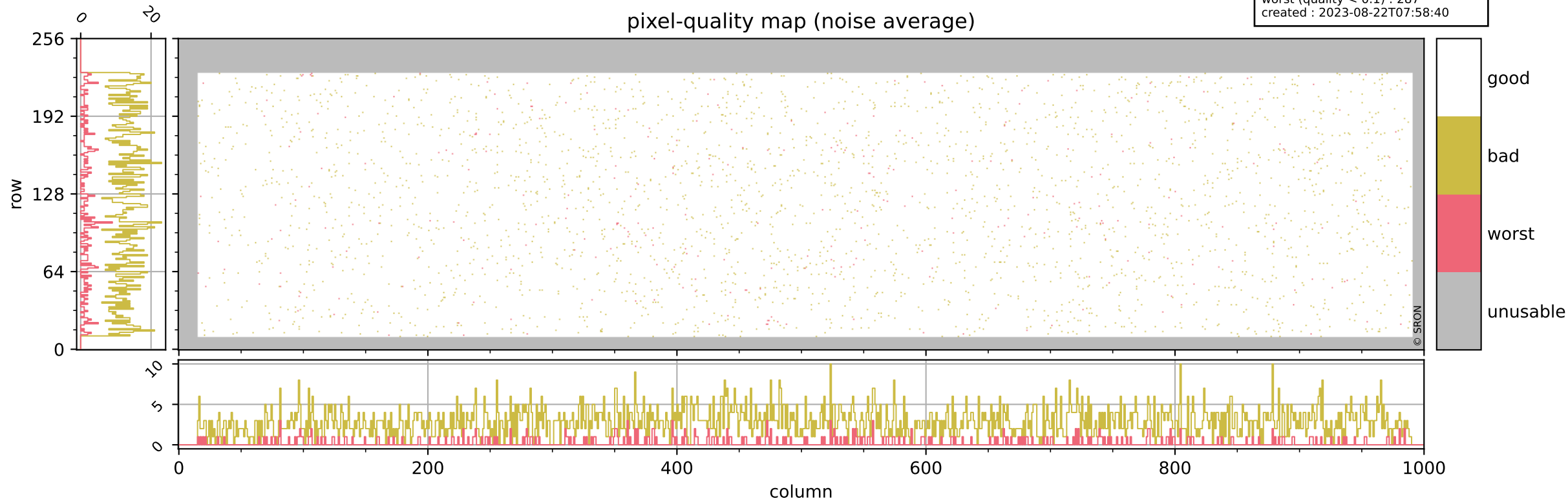
## pixel-quality map (dark)



# Tropomi SWIR pixel quality (official)

orbits : 20 in [9412, 9457]  
coverage : 2019-08-07 / 2019-08-10  
bad (quality < 0.8) : 2841  
worst (quality < 0.1) : 287  
created : 2023-08-22T07:58:40

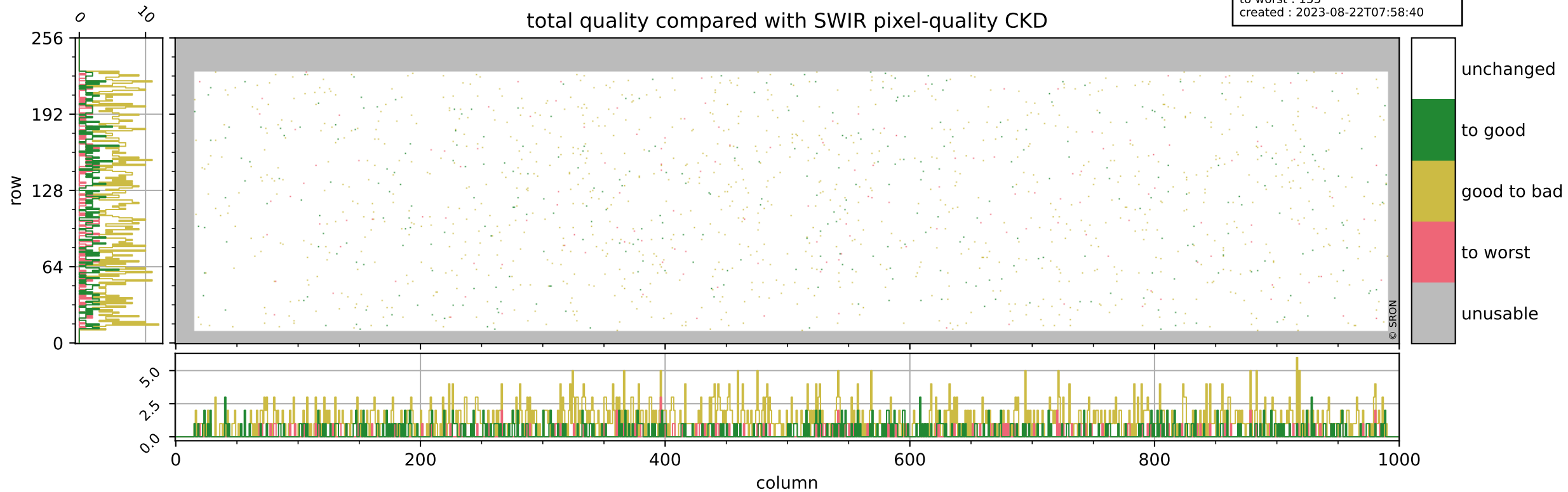
## pixel-quality map (noise average)



# Tropomi SWIR pixel quality (official)

orbits : 20 in [9412, 9457]  
coverage : 2019-08-07 / 2019-08-10  
to good : 345  
good to bad : 1037  
to worst : 155  
created : 2023-08-22T07:58:40

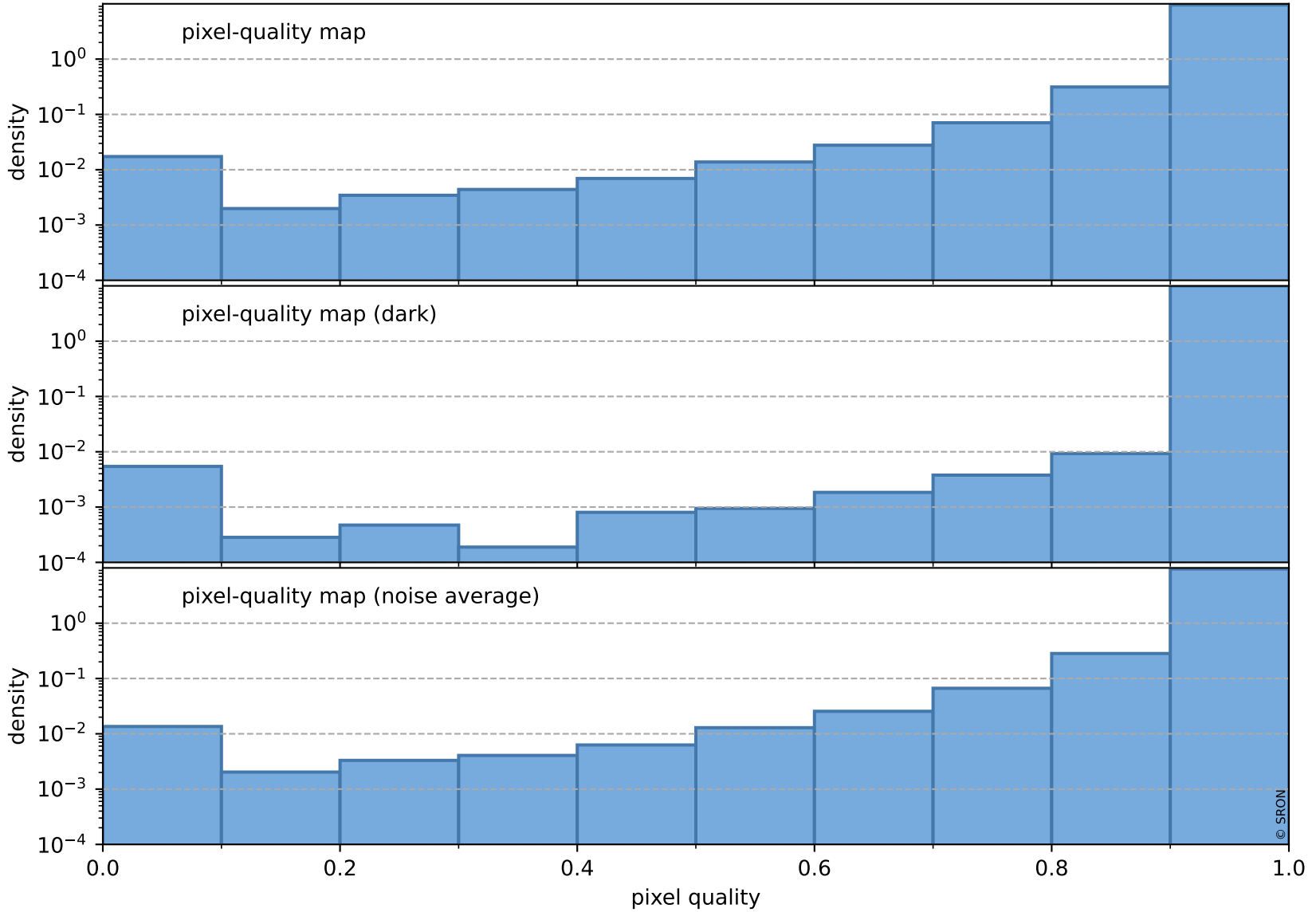
## total quality compared with SWIR pixel-quality CKD



# Tropomi SWIR pixel quality (official)

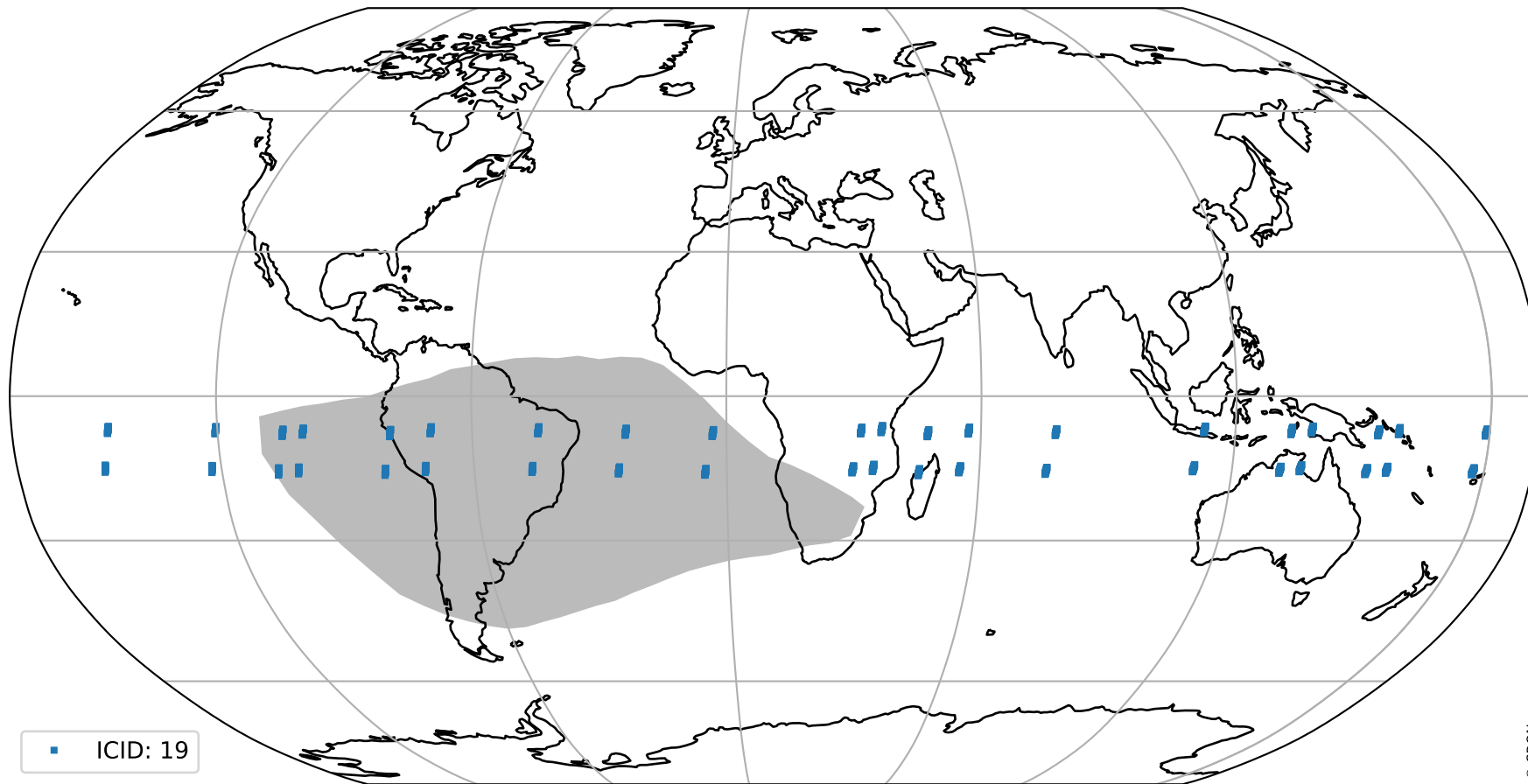
orbits : 20 in [9412, 9457]  
coverage : 2019-08-07 / 2019-08-10  
created : 2023-08-22T07:58:41

## Histograms of pixel-quality



# Tropomi SWIR pixel quality (official) ground-tracks of Sentinel-5P

orbits : 20 in [9412, 9457]  
coverage : 2019-08-07 / 2019-08-10  
created : 2023-08-22T07:58:41



# Tropomi SWIR pixel quality (official)

orbits : [2827, 9457]  
coverage : 2018-04-30 / 2019-08-10  
created : 2023-08-22T07:58:41

## trend of pixel quality & temperatures

