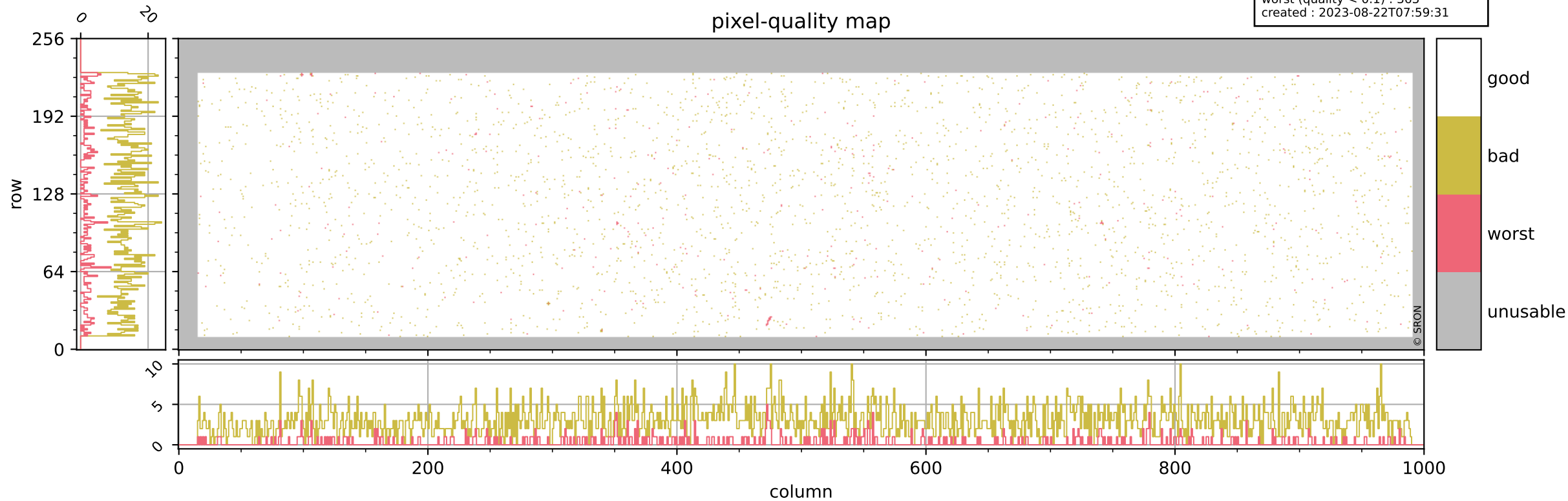


Tropomi SWIR pixel quality (official)

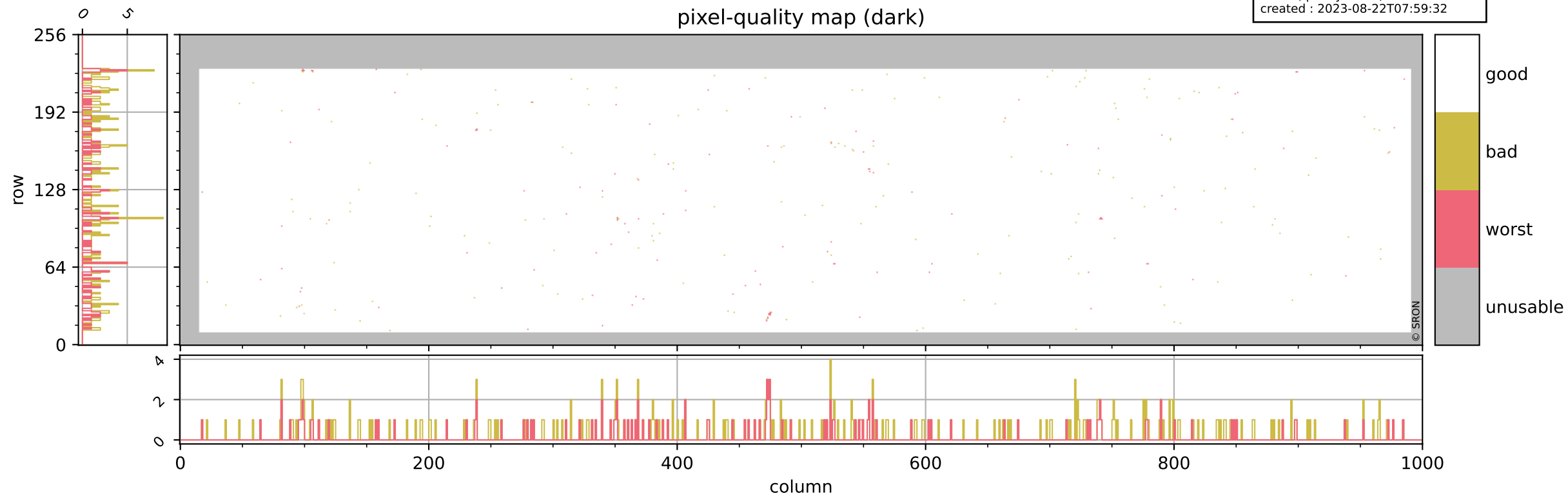
orbits : 19 in [9757, 9802]
coverage : 2019-09-01 / 2019-09-04
bad (quality < 0.8) : 3044
worst (quality < 0.1) : 363
created : 2023-08-22T07:59:31

pixel-quality map



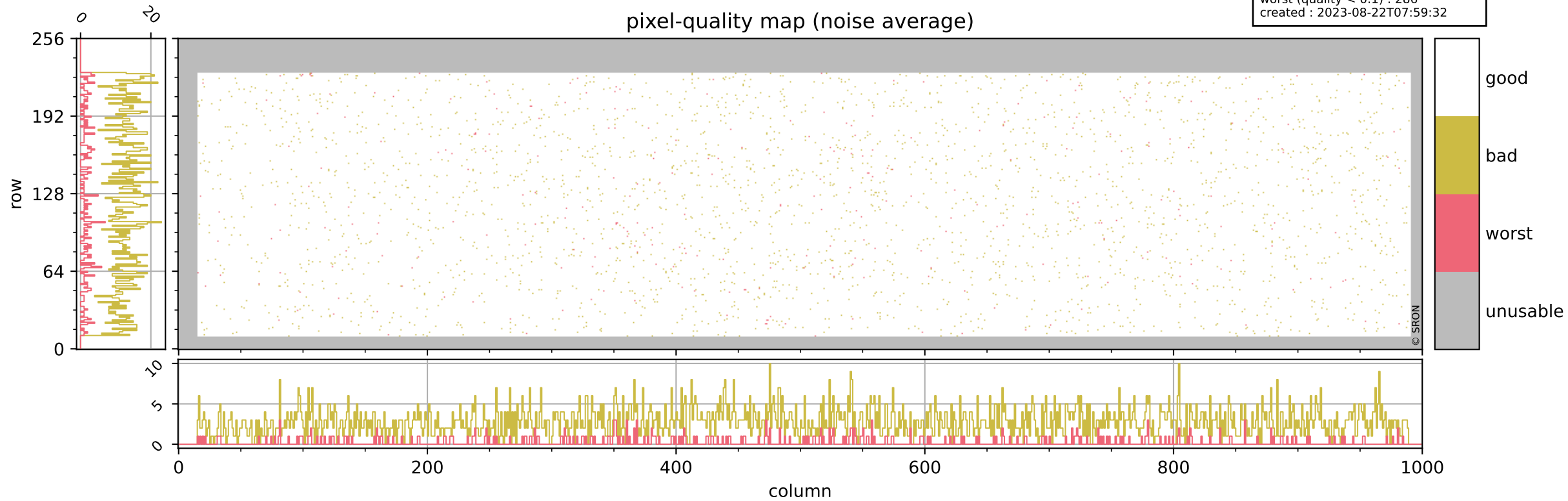
Tropomi SWIR pixel quality (official)

orbits : 19 in [9757, 9802]
coverage : 2019-09-01 / 2019-09-04
bad (quality < 0.8) : 291
worst (quality < 0.1) : 116
created : 2023-08-22T07:59:32



Tropomi SWIR pixel quality (official)

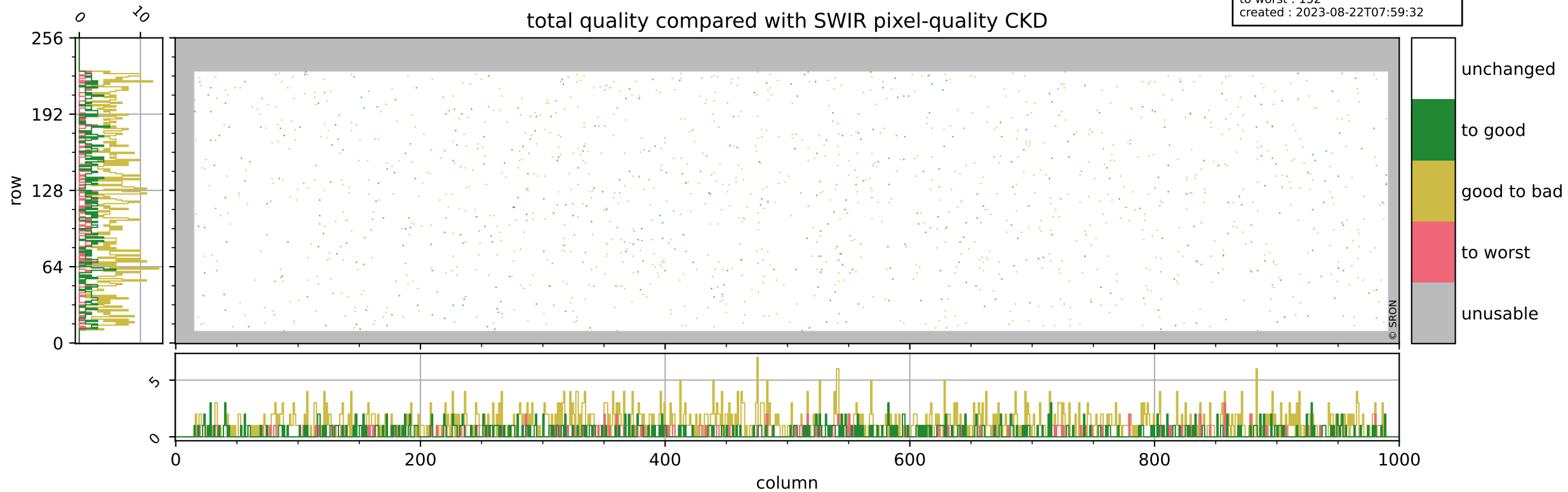
orbits : 19 in [9757, 9802]
coverage : 2019-09-01 / 2019-09-04
bad (quality < 0.8) : 2788
worst (quality < 0.1) : 286
created : 2023-08-22T07:59:32



Tropomi SWIR pixel quality (official)

orbits : 19 in [9757, 9802]
coverage : 2019-09-01 / 2019-09-04
to good : 363
good to bad : 1002
to worst : 152
created : 2023-08-22T07:59:32

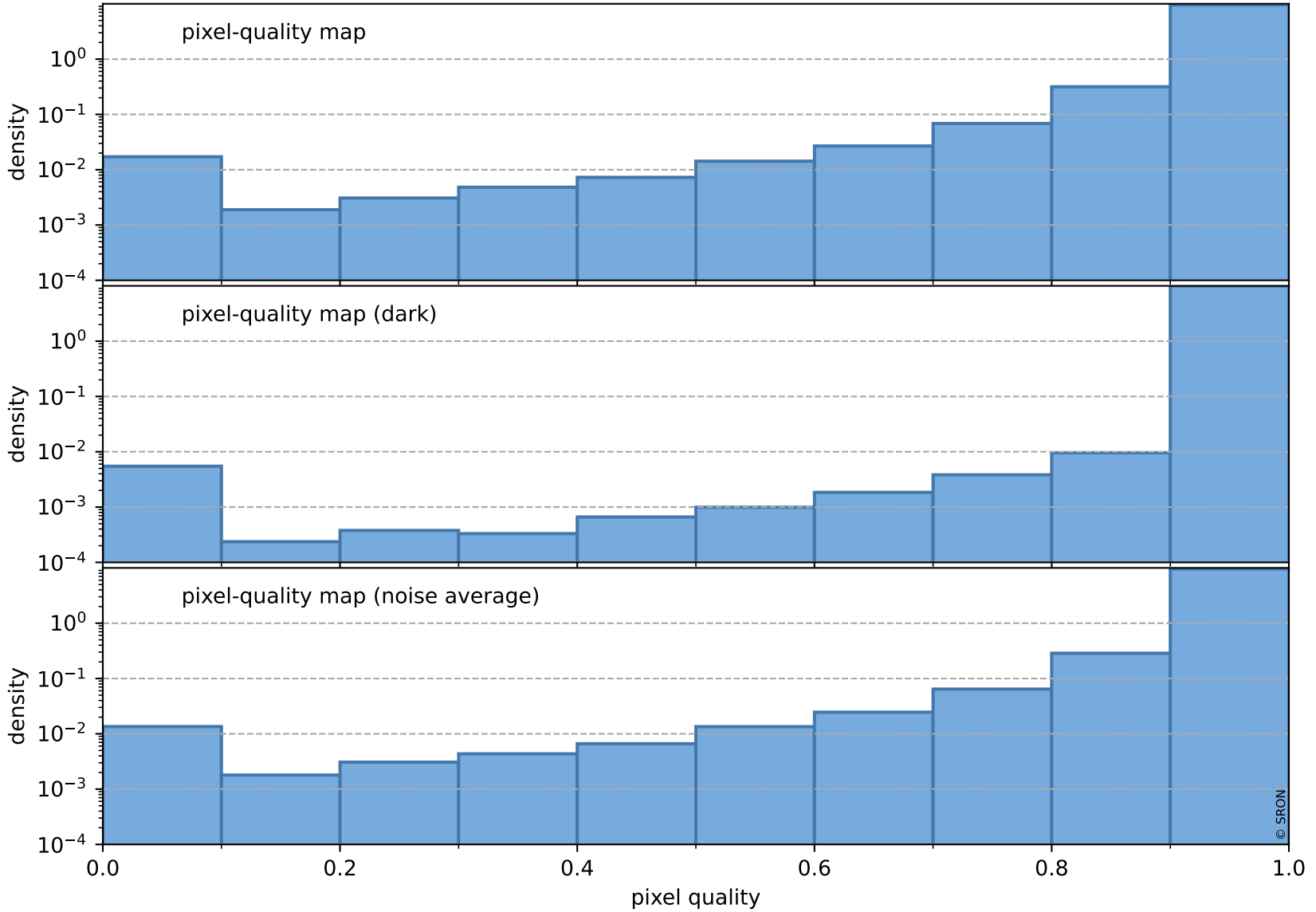
total quality compared with SWIR pixel-quality CKD



Tropomi SWIR pixel quality (official)

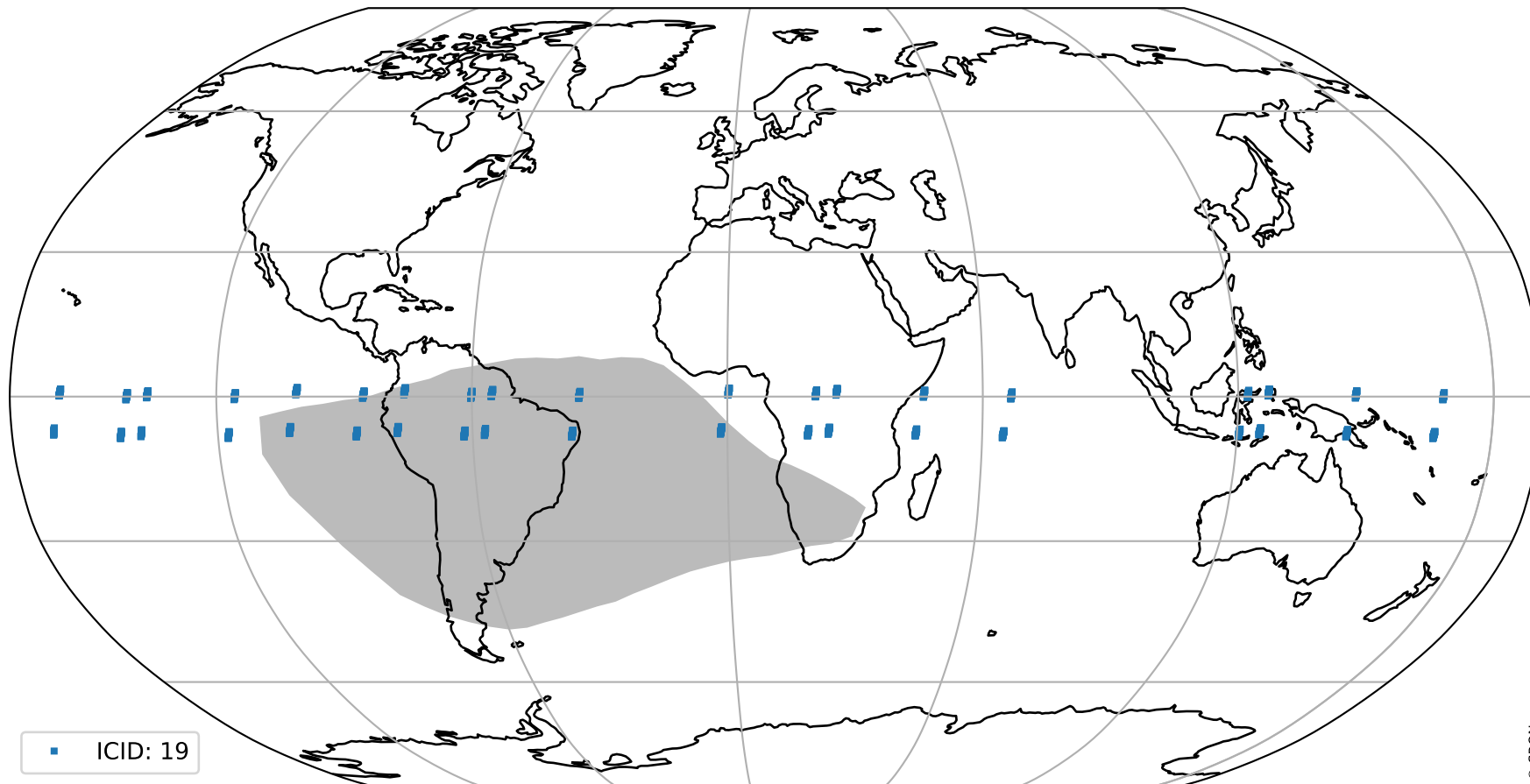
orbits : 19 in [9757, 9802]
coverage : 2019-09-01 / 2019-09-04
created : 2023-08-22T07:59:32

Histograms of pixel-quality



Tropomi SWIR pixel quality (official) ground-tracks of Sentinel-5P

orbits : 19 in [9757, 9802]
coverage : 2019-09-01 / 2019-09-04
created : 2023-08-22T07:59:33



Tropomi SWIR pixel quality (official)

orbits : [2827, 9802]
coverage : 2018-04-30 / 2019-09-04
created : 2023-08-22T07:59:33

trend of pixel quality & temperatures

