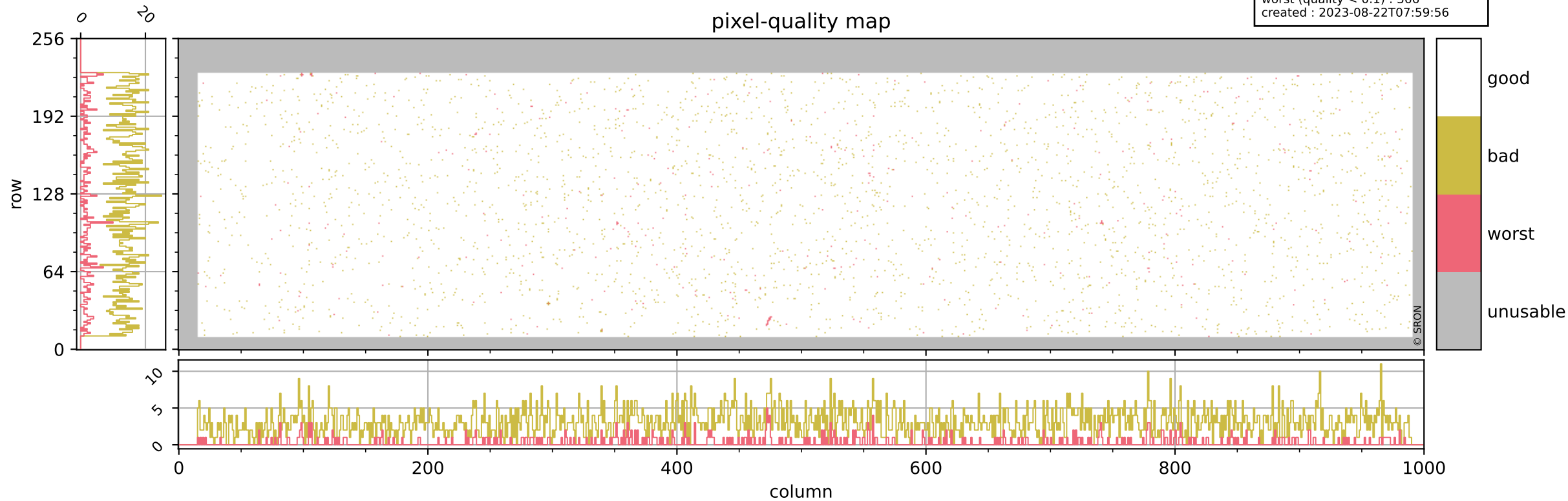


Tropomi SWIR pixel quality (official)

orbits : 20 in [9922, 9967]
coverage : 2019-09-12 / 2019-09-15
bad (quality < 0.8) : 3085
worst (quality < 0.1) : 366
created : 2023-08-22T07:59:56

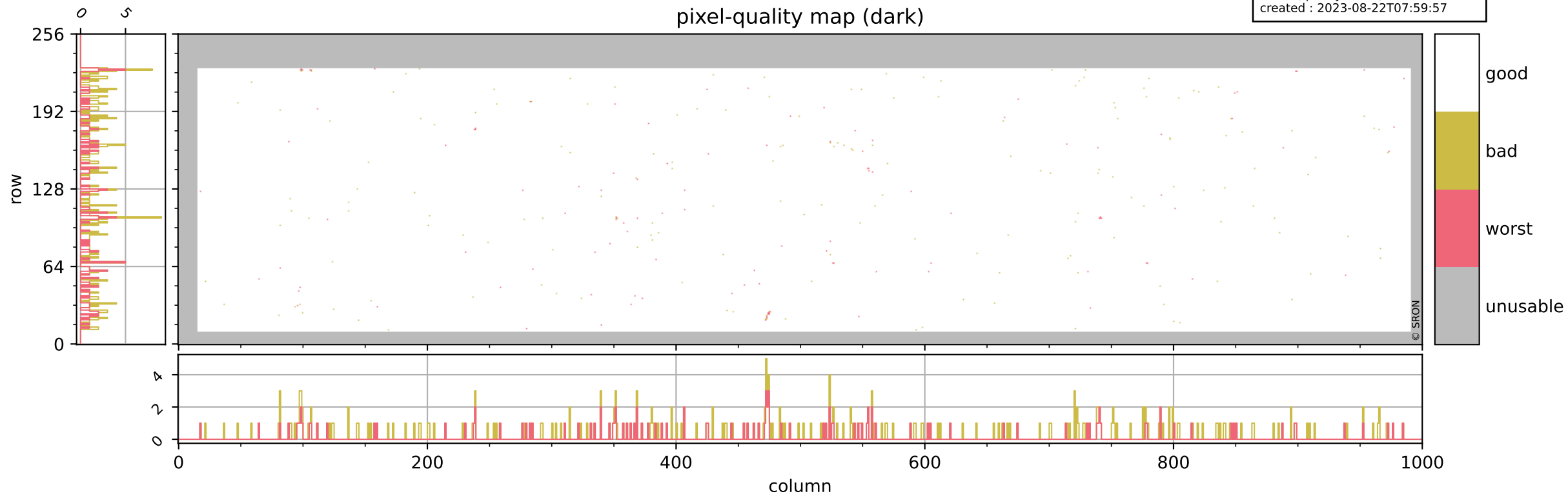
pixel-quality map



Tropomi SWIR pixel quality (official)

orbits : 20 in [9922, 9967]
coverage : 2019-09-12 / 2019-09-15
bad (quality < 0.8) : 290
worst (quality < 0.1) : 114
created : 2023-08-22T07:59:57

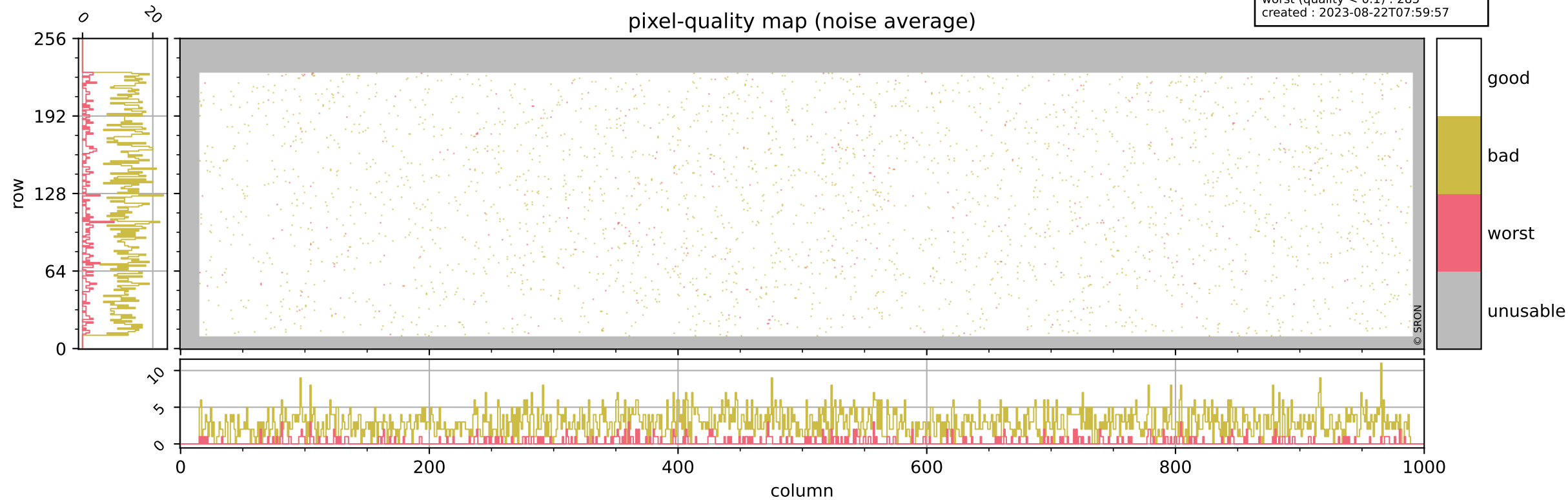
pixel-quality map (dark)



Tropomi SWIR pixel quality (official)

orbits : 20 in [9922, 9967]
coverage : 2019-09-12 / 2019-09-15
bad (quality < 0.8) : 2837
worst (quality < 0.1) : 285
created : 2023-08-22T07:59:57

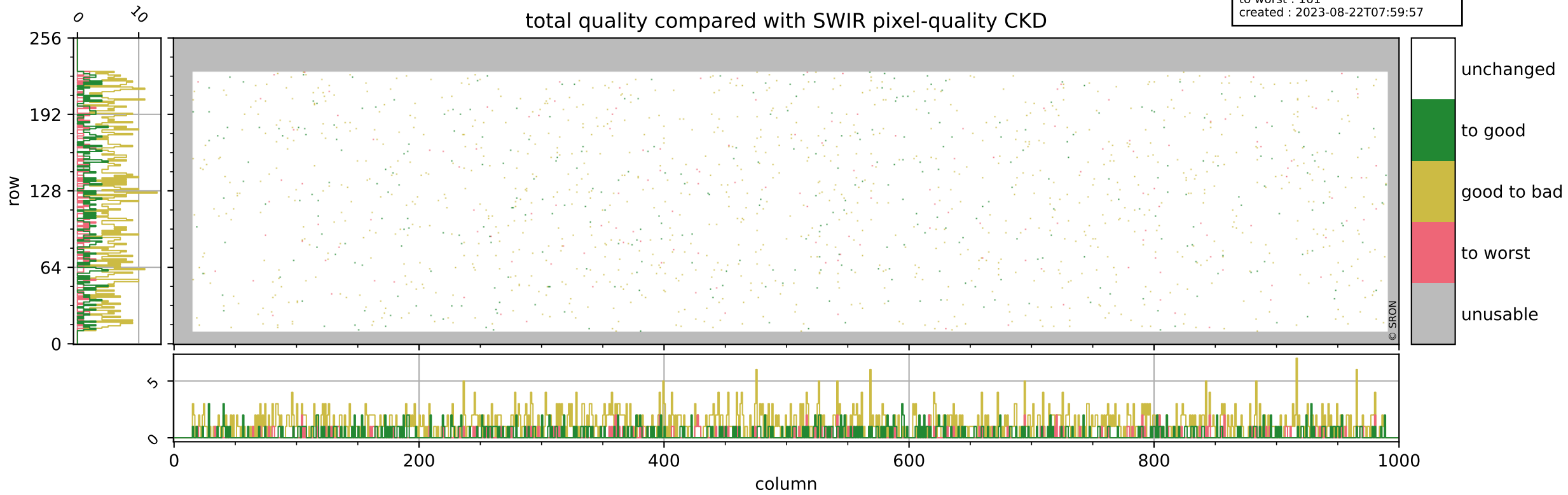
pixel-quality map (noise average)



Tropomi SWIR pixel quality (official)

orbits : 20 in [9922, 9967]
coverage : 2019-09-12 / 2019-09-15
to good : 353
good to bad : 1029
to worst : 161
created : 2023-08-22T07:59:57

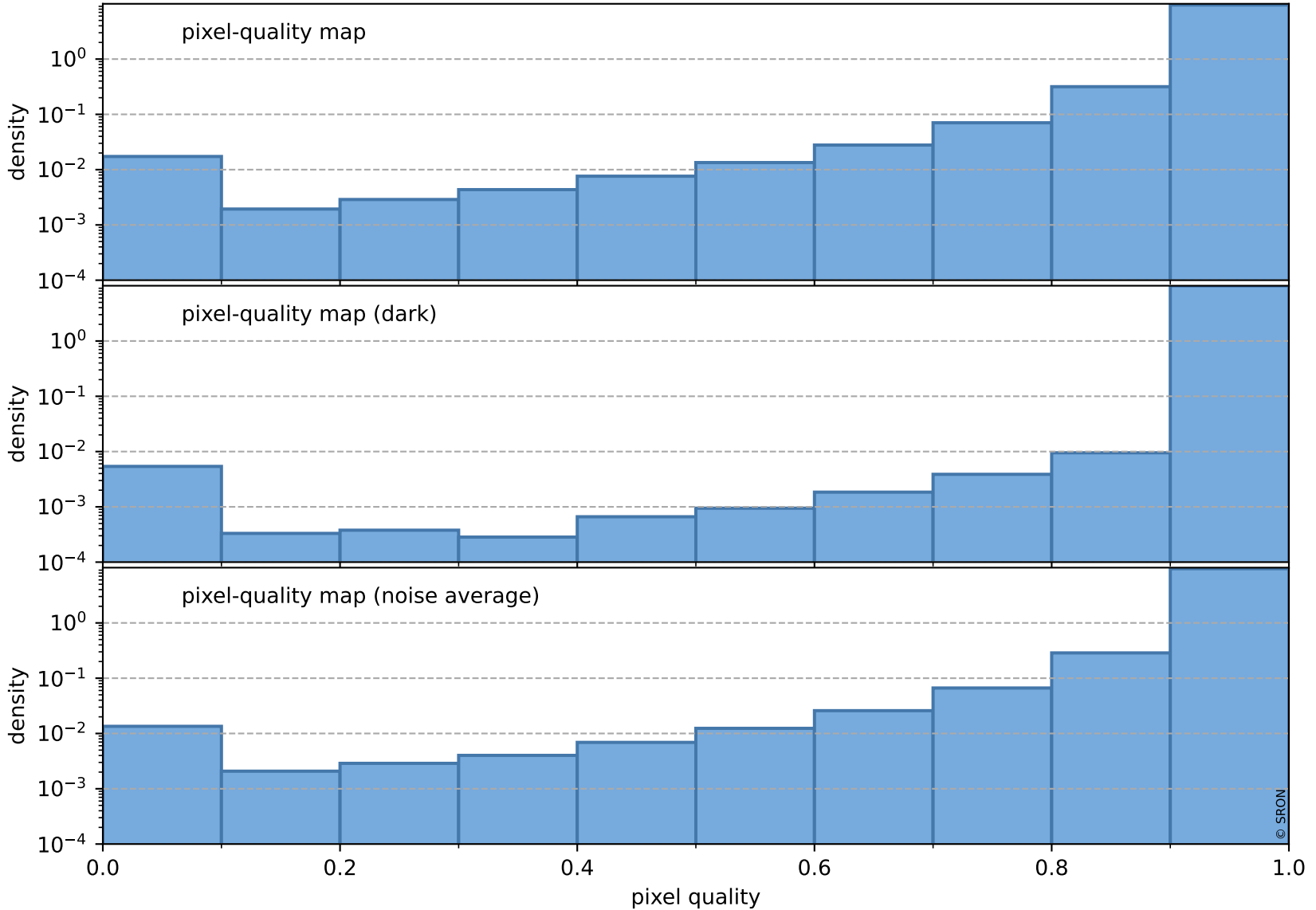
total quality compared with SWIR pixel-quality CKD



Tropomi SWIR pixel quality (official)

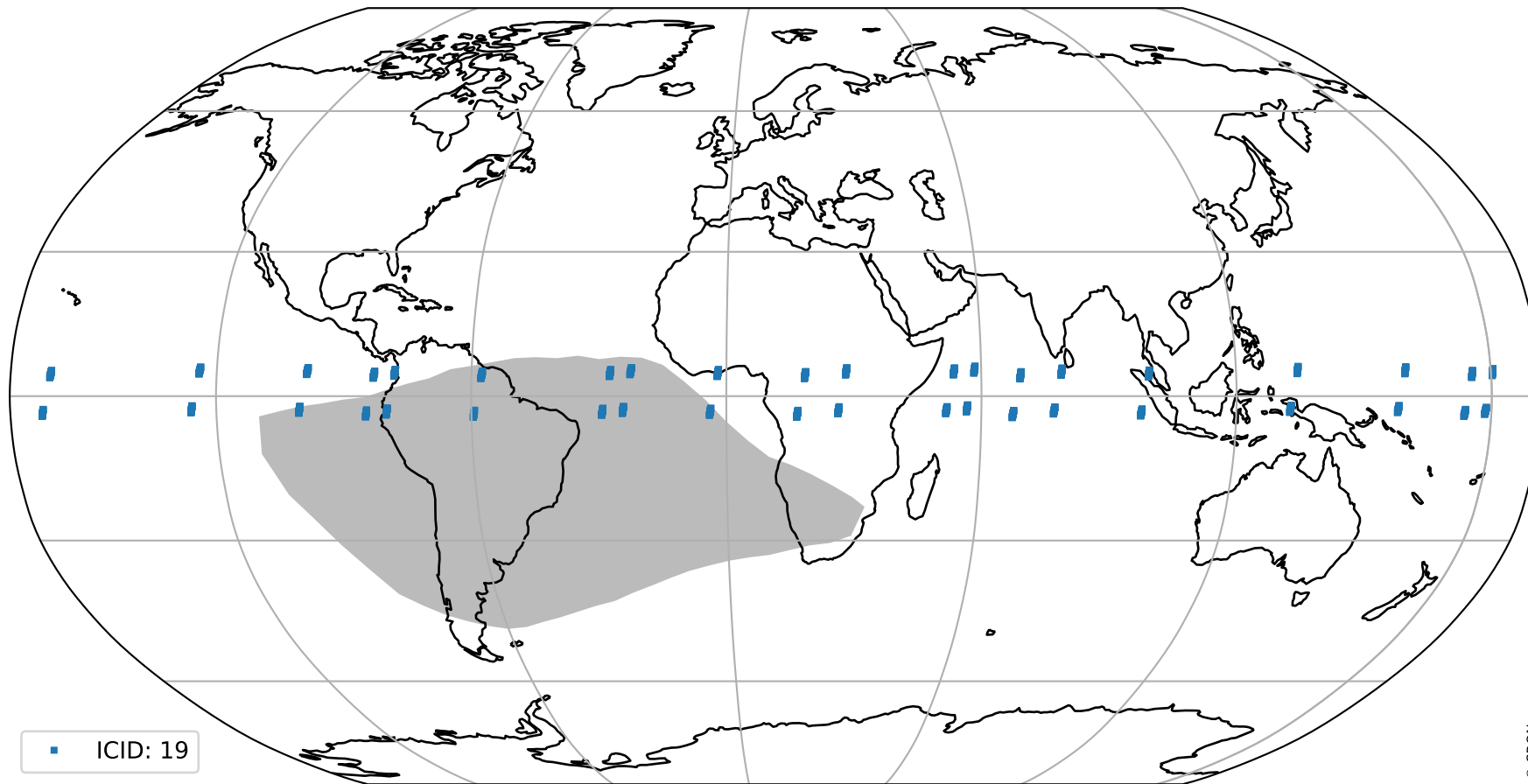
orbits : 20 in [9922, 9967]
coverage : 2019-09-12 / 2019-09-15
created : 2023-08-22T07:59:57

Histograms of pixel-quality



Tropomi SWIR pixel quality (official) ground-tracks of Sentinel-5P

orbits : 20 in [9922, 9967]
coverage : 2019-09-12 / 2019-09-15
created : 2023-08-22T07:59:58



Tropomi SWIR pixel quality (official)

orbits : [2827, 9967]
coverage : 2018-04-30 / 2019-09-15
created : 2023-08-22T07:59:58

trend of pixel quality & temperatures

