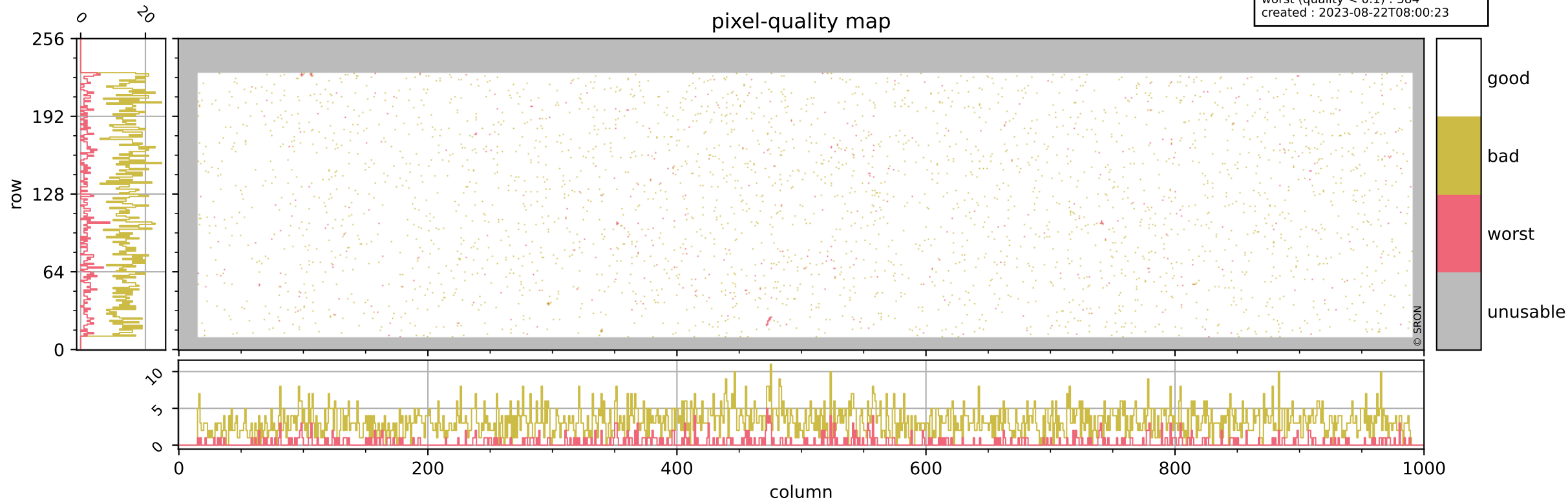


Tropomi SWIR pixel quality (official)

orbits : 20 in [10102, 10147]
coverage : 2019-09-25 / 2019-09-28
bad (quality < 0.8) : 3192
worst (quality < 0.1) : 384
created : 2023-08-22T08:00:23

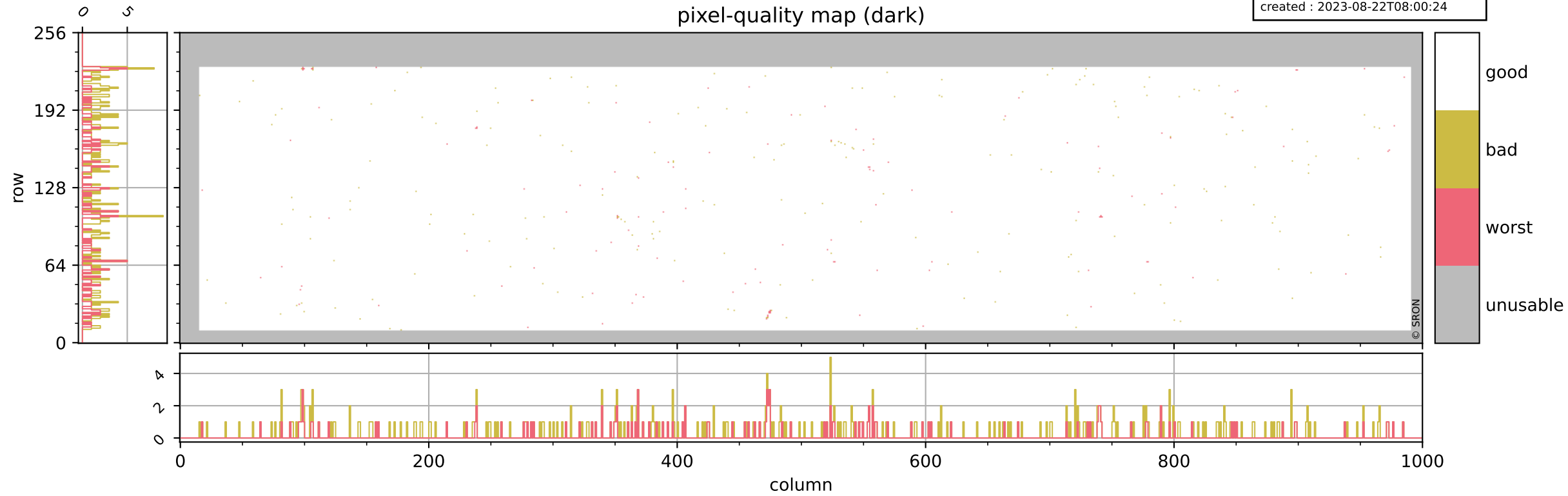
pixel-quality map



Tropomi SWIR pixel quality (official)

orbits : 20 in [10102, 10147]
coverage : 2019-09-25 / 2019-09-28
bad (quality < 0.8) : 334
worst (quality < 0.1) : 125
created : 2023-08-22T08:00:24

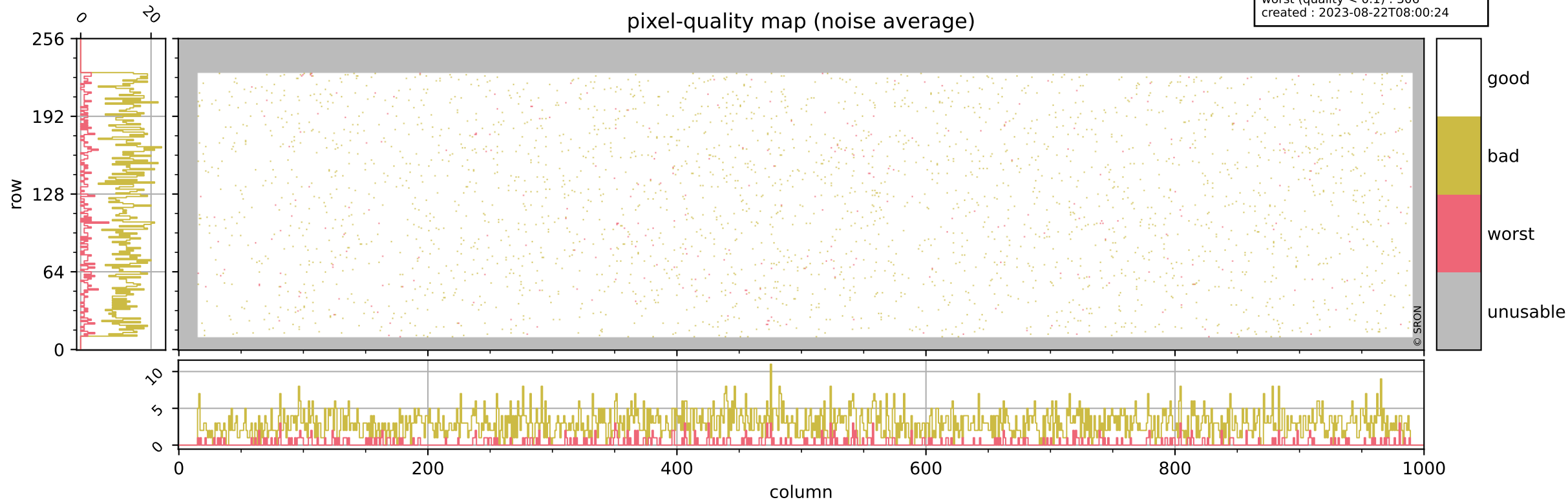
pixel-quality map (dark)



Tropomi SWIR pixel quality (official)

orbits : 20 in [10102, 10147]
coverage : 2019-09-25 / 2019-09-28
bad (quality < 0.8) : 2924
worst (quality < 0.1) : 306
created : 2023-08-22T08:00:24

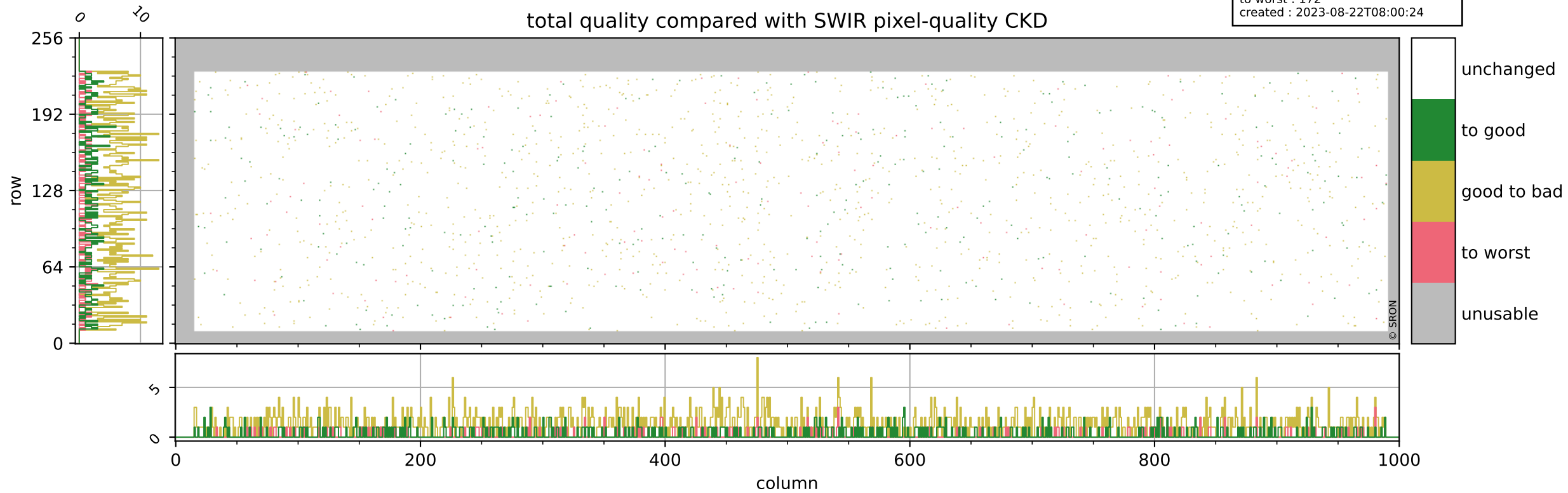
pixel-quality map (noise average)



Tropomi SWIR pixel quality (official)

orbits : 20 in [10102, 10147]
coverage : 2019-09-25 / 2019-09-28
to good : 348
good to bad : 1122
to worst : 172
created : 2023-08-22T08:00:24

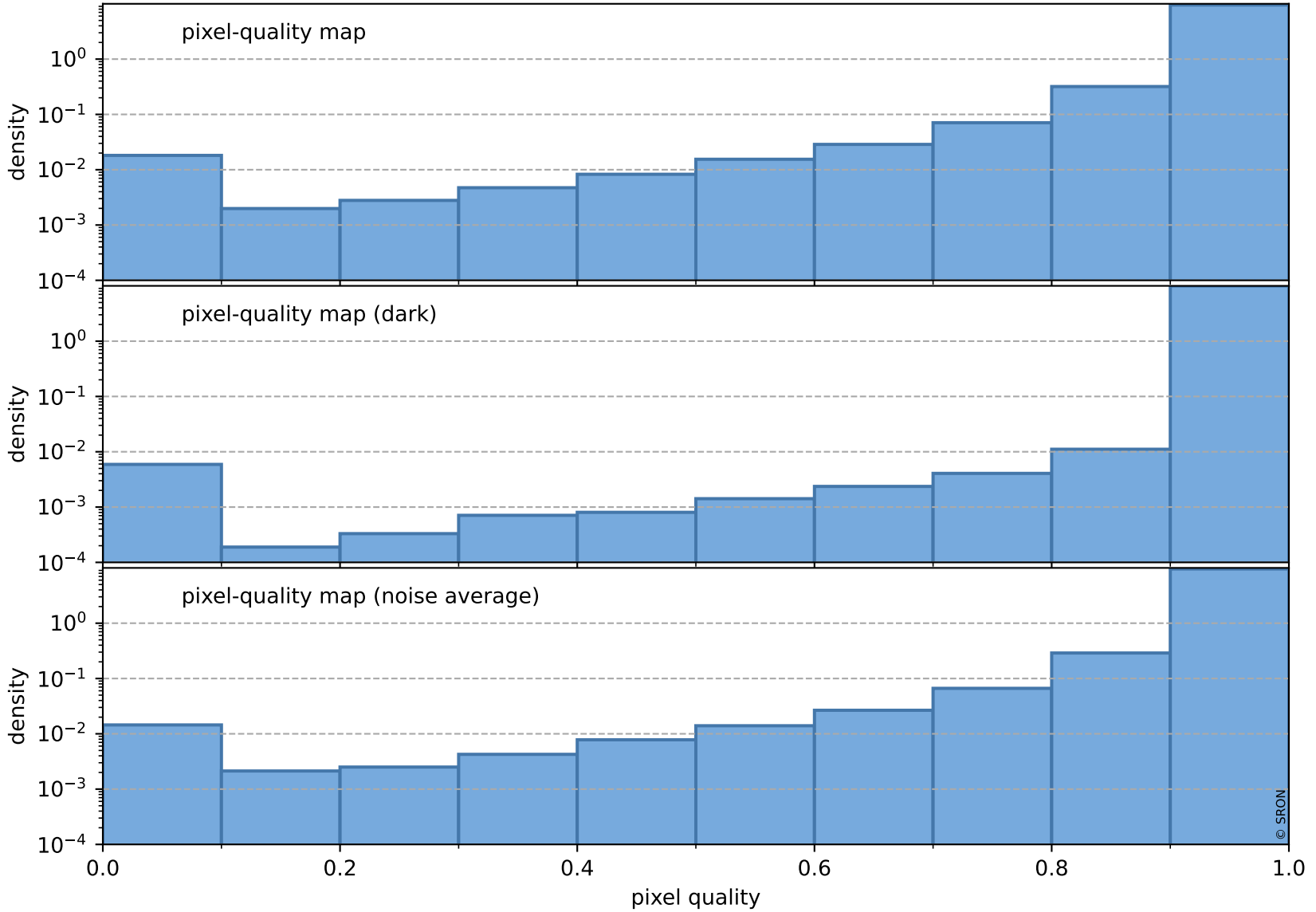
total quality compared with SWIR pixel-quality CKD



Tropomi SWIR pixel quality (official)

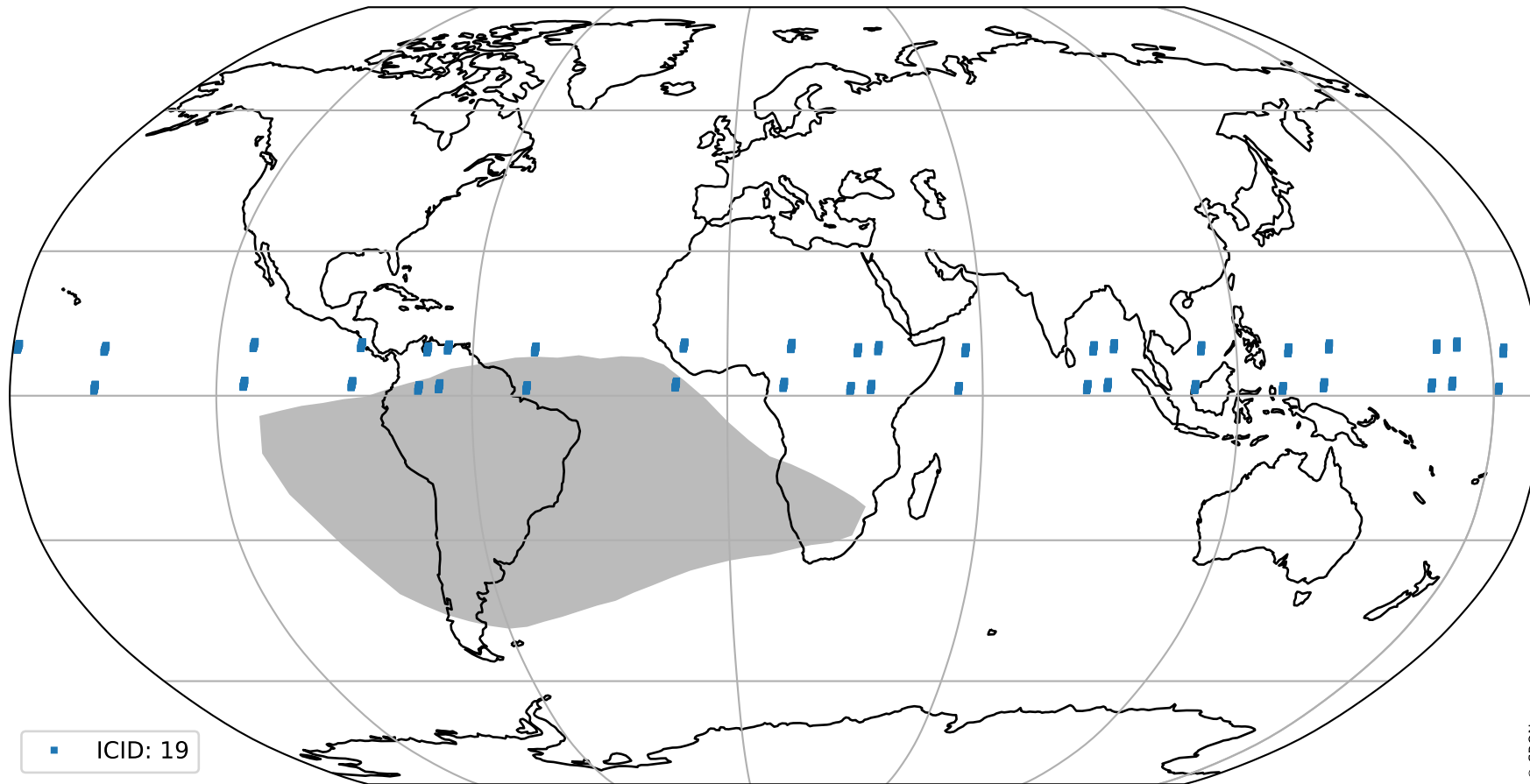
orbits : 20 in [10102, 10147]
coverage : 2019-09-25 / 2019-09-28
created : 2023-08-22T08:00:24

Histograms of pixel-quality



Tropomi SWIR pixel quality (official) ground-tracks of Sentinel-5P

orbits : 20 in [10102, 10147]
coverage : 2019-09-25 / 2019-09-28
created : 2023-08-22T08:00:25



Tropomi SWIR pixel quality (official)

orbits : [2827, 10117]
coverage : 2018-04-30 / 2019-09-26
created : 2023-08-22T08:00:25

trend of pixel quality & temperatures

