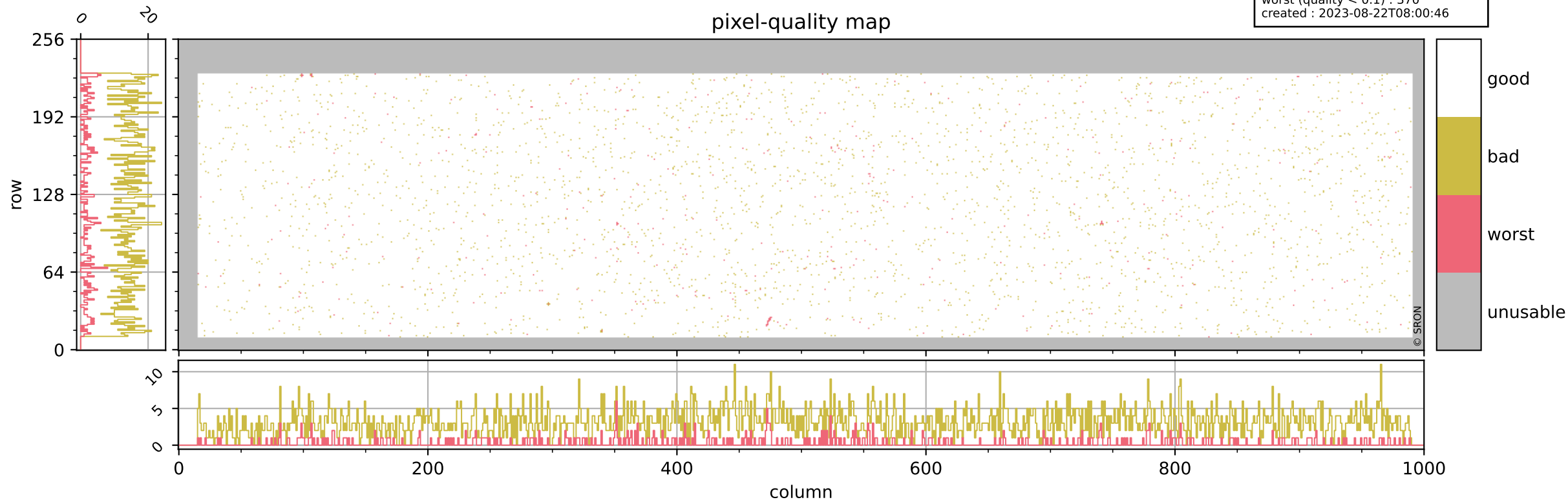


# Tropomi SWIR pixel quality (official)

orbits : 20 in [10252, 10297]  
coverage : 2019-10-06 / 2019-10-09  
bad (quality < 0.8) : 3153  
worst (quality < 0.1) : 370  
created : 2023-08-22T08:00:46

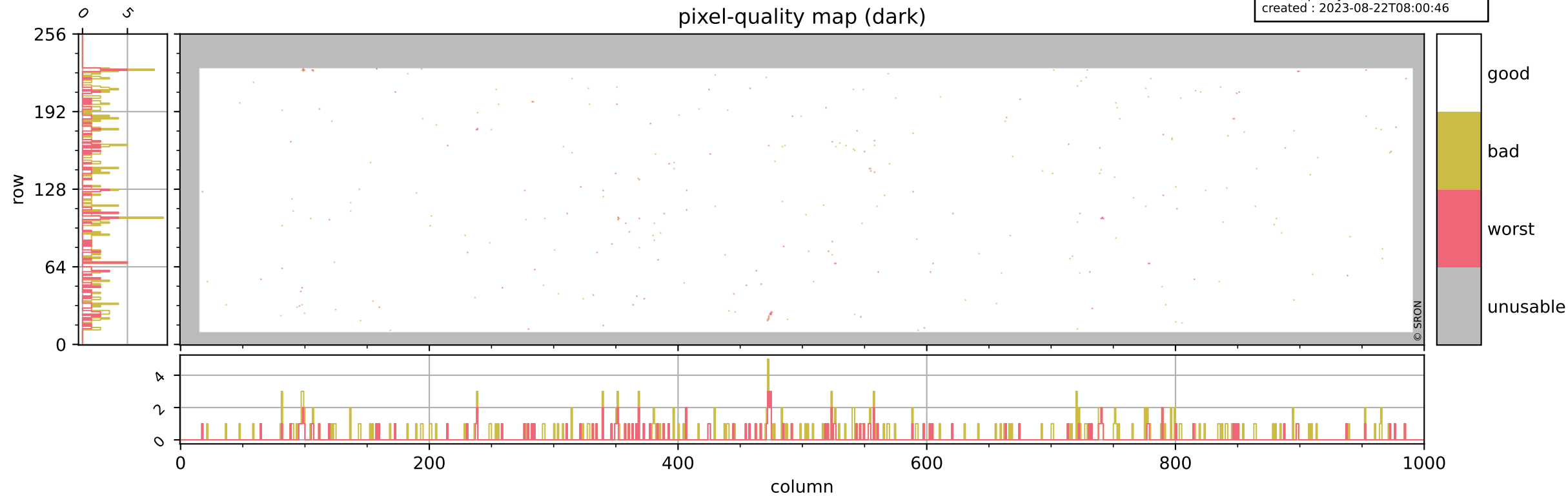
## pixel-quality map



# Tropomi SWIR pixel quality (official)

orbits : 20 in [10252, 10297]  
coverage : 2019-10-06 / 2019-10-09  
bad (quality < 0.8) : 292  
worst (quality < 0.1) : 116  
created : 2023-08-22T08:00:46

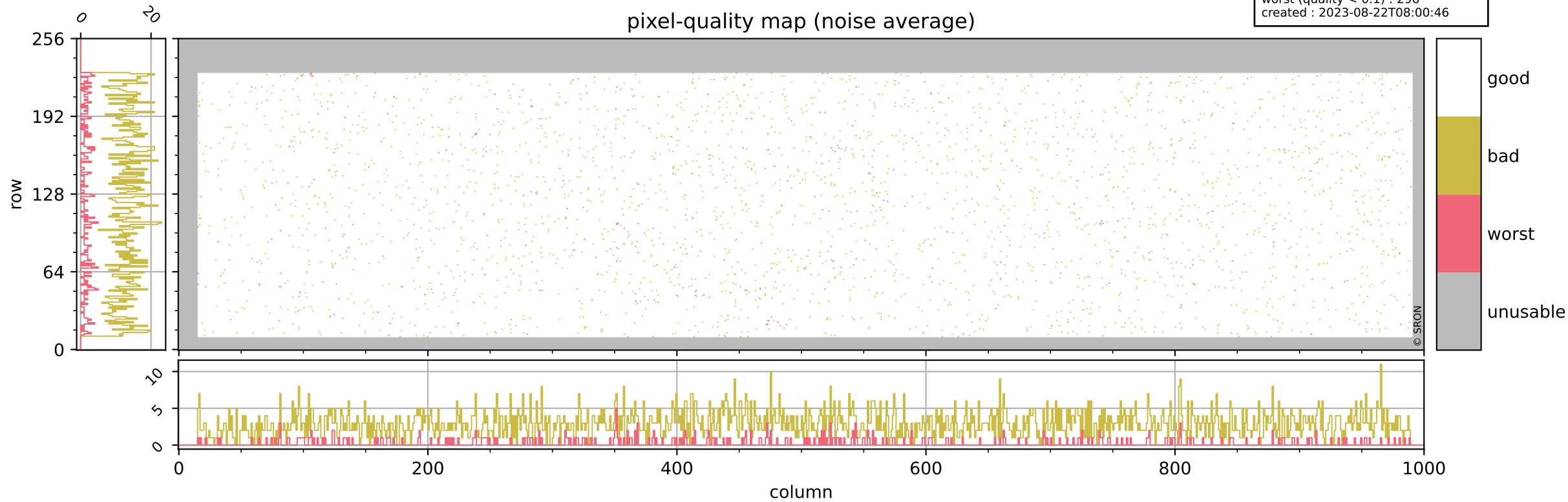
## pixel-quality map (dark)



# Tropomi SWIR pixel quality (official)

orbits : 20 in [10252, 10297]  
coverage : 2019-10-06 / 2019-10-09  
bad (quality < 0.8) : 2905  
worst (quality < 0.1) : 296  
created : 2023-08-22T08:00:46

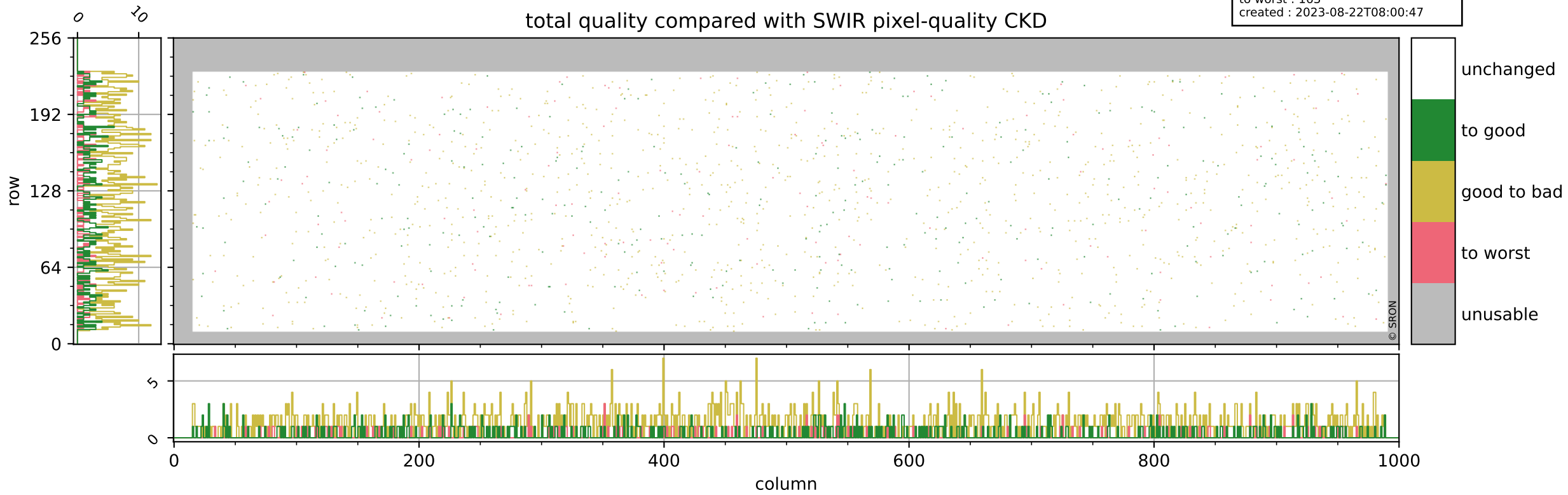
## pixel-quality map (noise average)



# Tropomi SWIR pixel quality (official)

orbits : 20 in [10252, 10297]  
coverage : 2019-10-06 / 2019-10-09  
to good : 349  
good to bad : 1088  
to worst : 163  
created : 2023-08-22T08:00:47

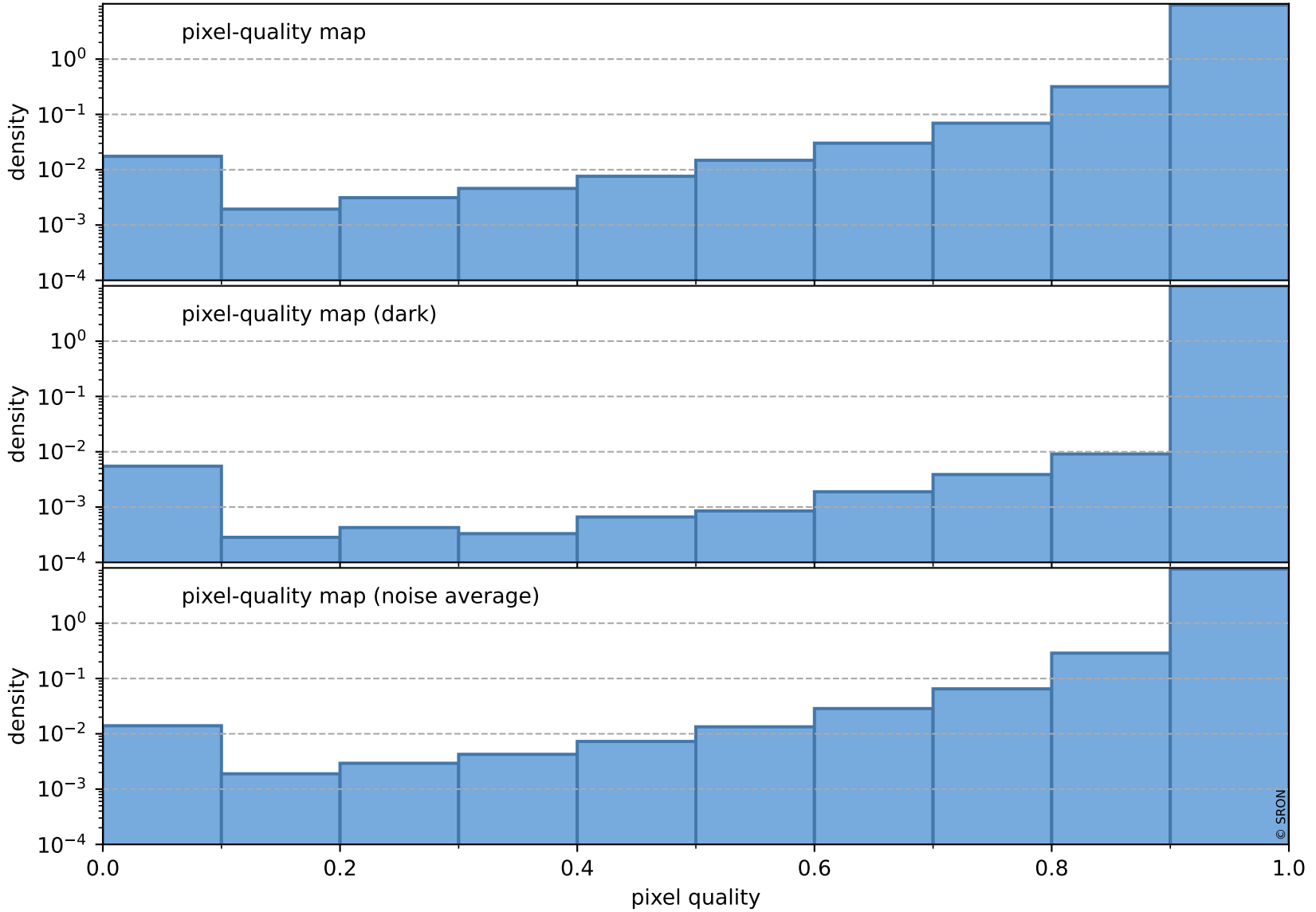
## total quality compared with SWIR pixel-quality CKD



# Tropomi SWIR pixel quality (official)

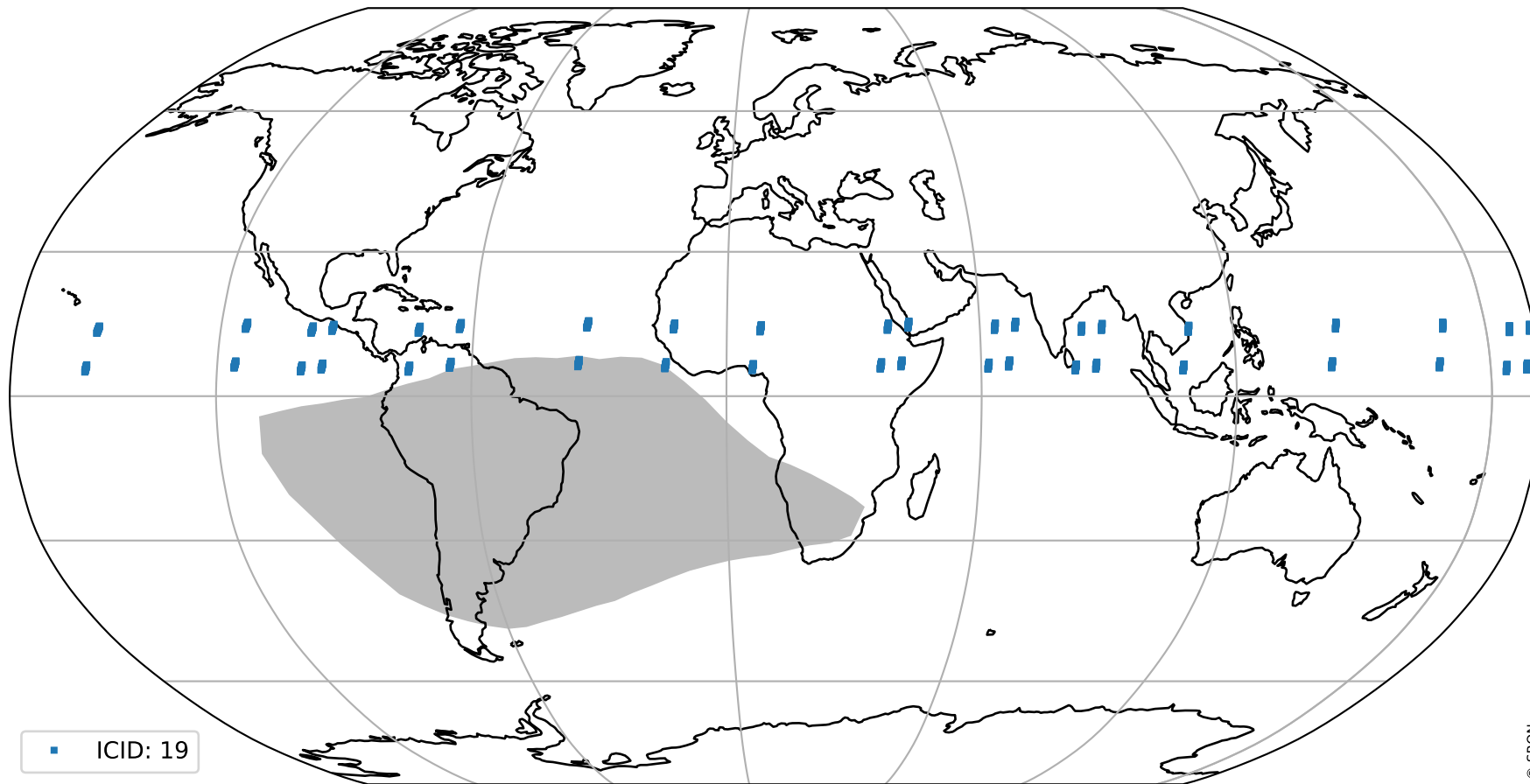
orbits : 20 in [10252, 10297]  
coverage : 2019-10-06 / 2019-10-09  
created : 2023-08-22T08:00:47

## Histograms of pixel-quality



# Tropomi SWIR pixel quality (official) ground-tracks of Sentinel-5P

orbits : 20 in [10252, 10297]  
coverage : 2019-10-06 / 2019-10-09  
created : 2023-08-22T08:00:47



# Tropomi SWIR pixel quality (official)

orbits : [2827, 10297]  
coverage : 2018-04-30 / 2019-10-09  
created : 2023-08-22T08:00:48

## trend of pixel quality & temperatures

