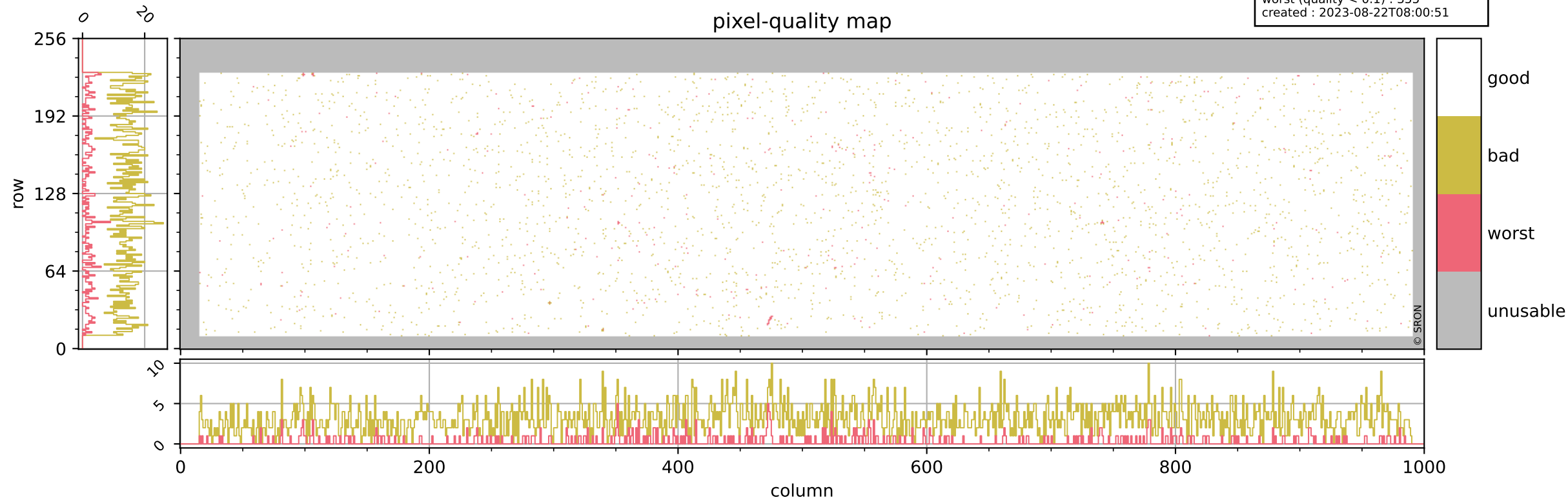


Tropomi SWIR pixel quality (official)

orbits : 20 in [10282, 10327]
coverage : 2019-10-08 / 2019-10-11
bad (quality < 0.8) : 3145
worst (quality < 0.1) : 355
created : 2023-08-22T08:00:51

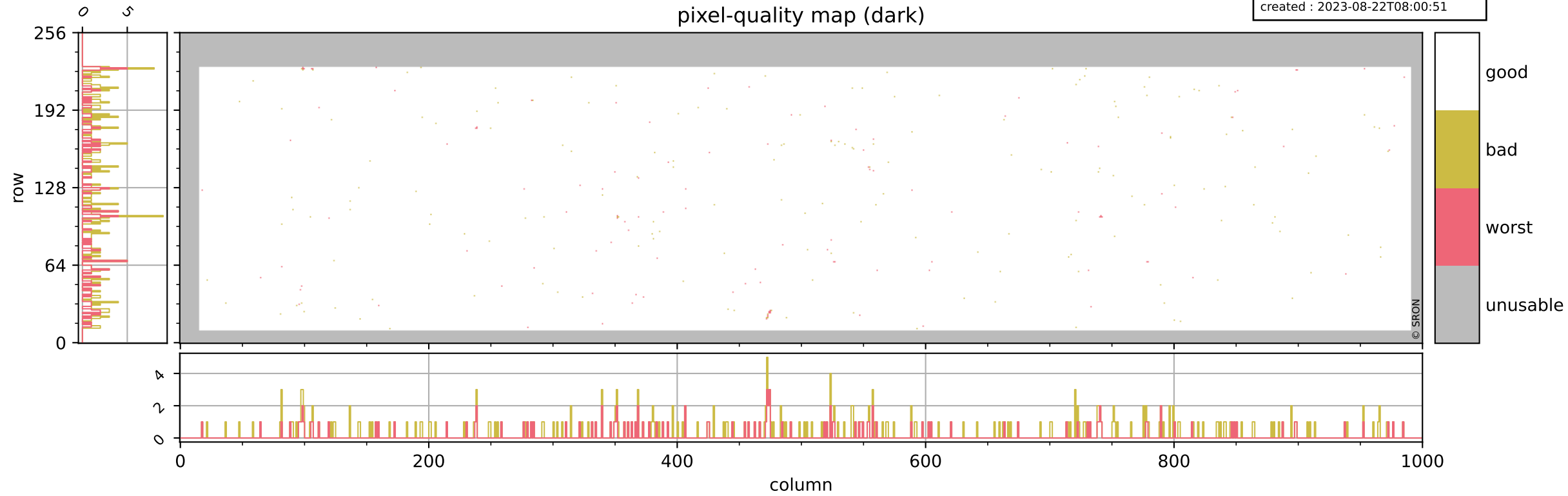
pixel-quality map



Tropomi SWIR pixel quality (official)

orbits : 20 in [10282, 10327]
coverage : 2019-10-08 / 2019-10-11
bad (quality < 0.8) : 292
worst (quality < 0.1) : 116
created : 2023-08-22T08:00:51

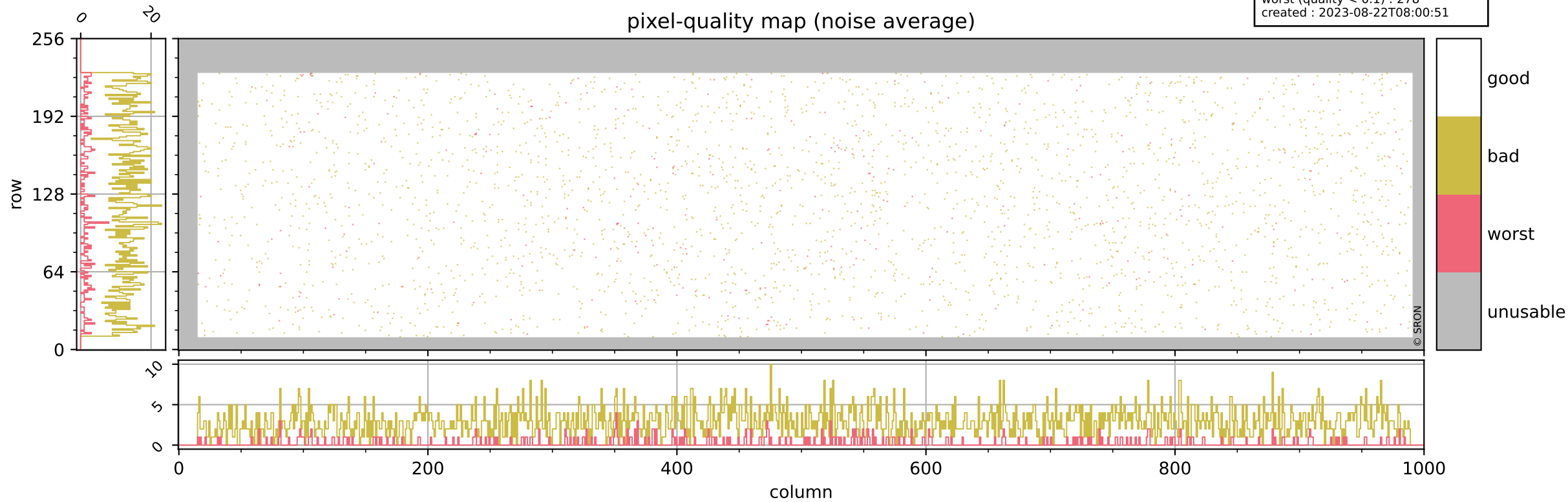
pixel-quality map (dark)



Tropomi SWIR pixel quality (official)

orbits : 20 in [10282, 10327]
coverage : 2019-10-08 / 2019-10-11
bad (quality < 0.8) : 2896
worst (quality < 0.1) : 278
created : 2023-08-22T08:00:51

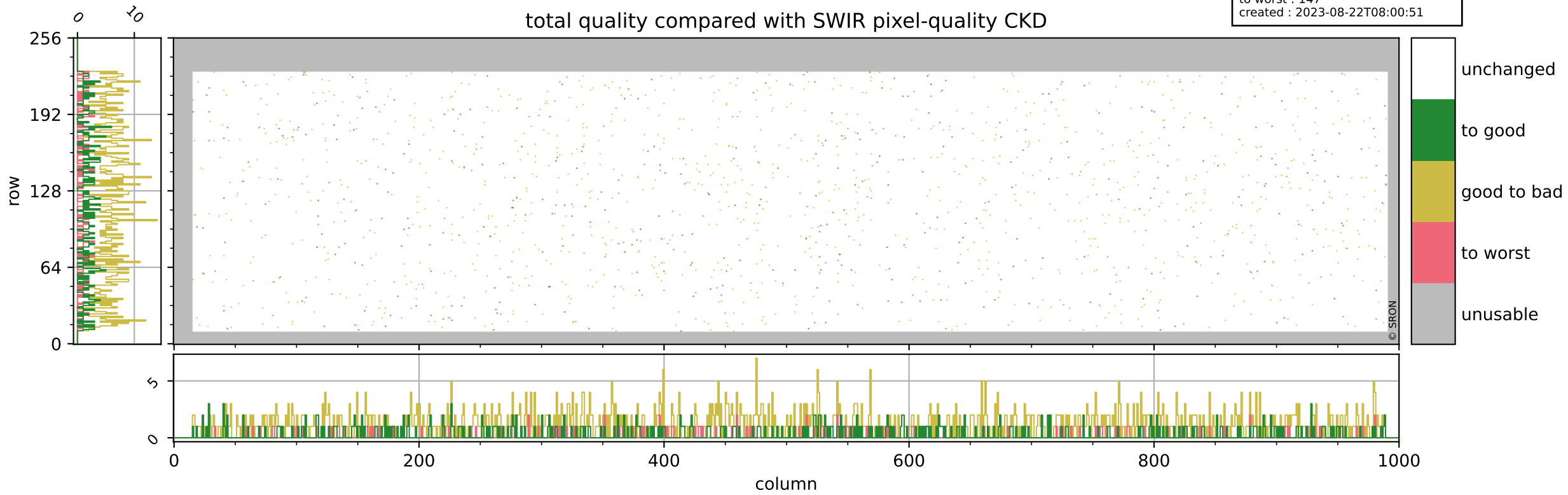
pixel-quality map (noise average)



Tropomi SWIR pixel quality (official)

orbits : 20 in [10282, 10327]
coverage : 2019-10-08 / 2019-10-11
to good : 340
good to bad : 1091
to worst : 147
created : 2023-08-22T08:00:51

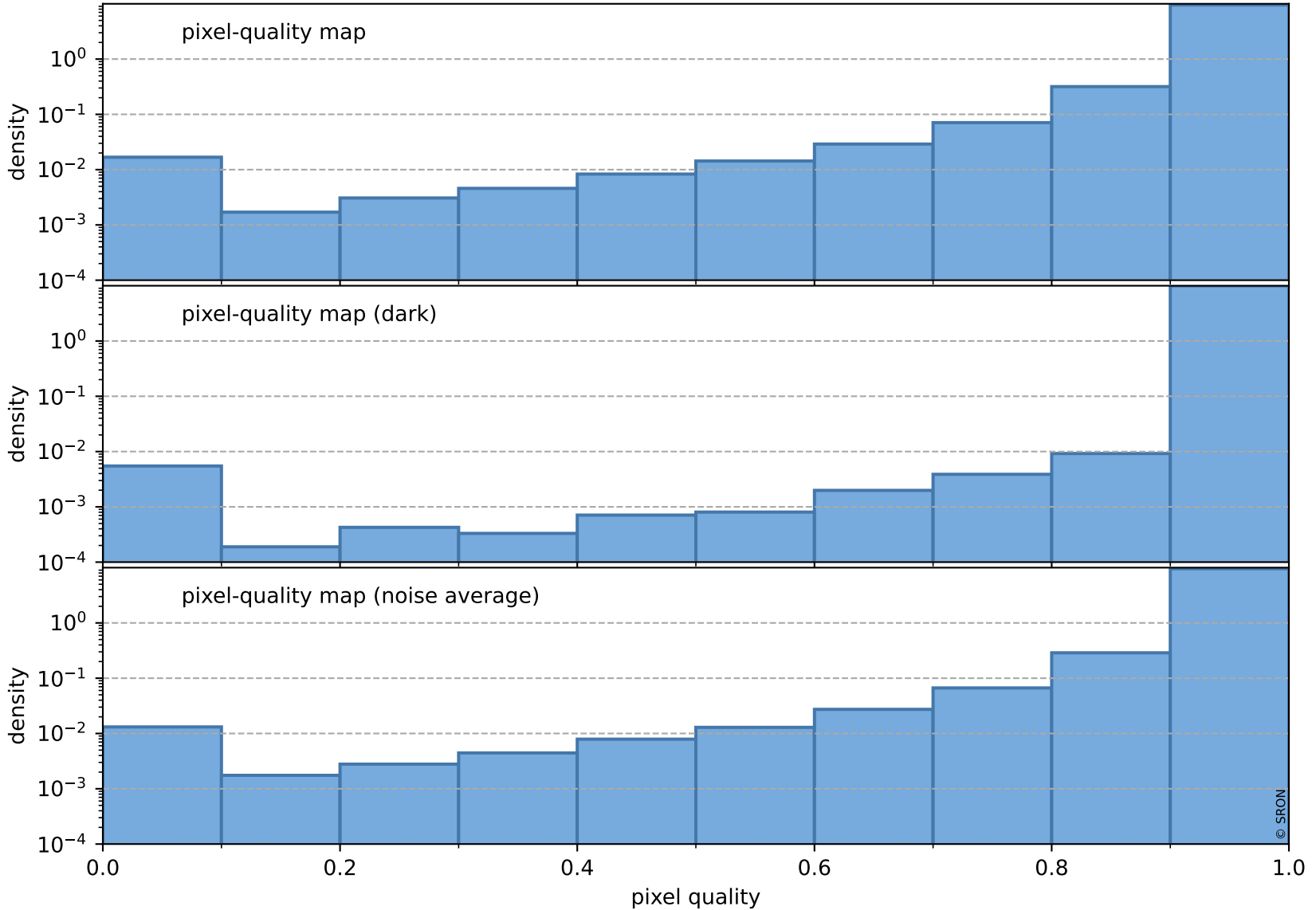
total quality compared with SWIR pixel-quality CKD



Tropomi SWIR pixel quality (official)

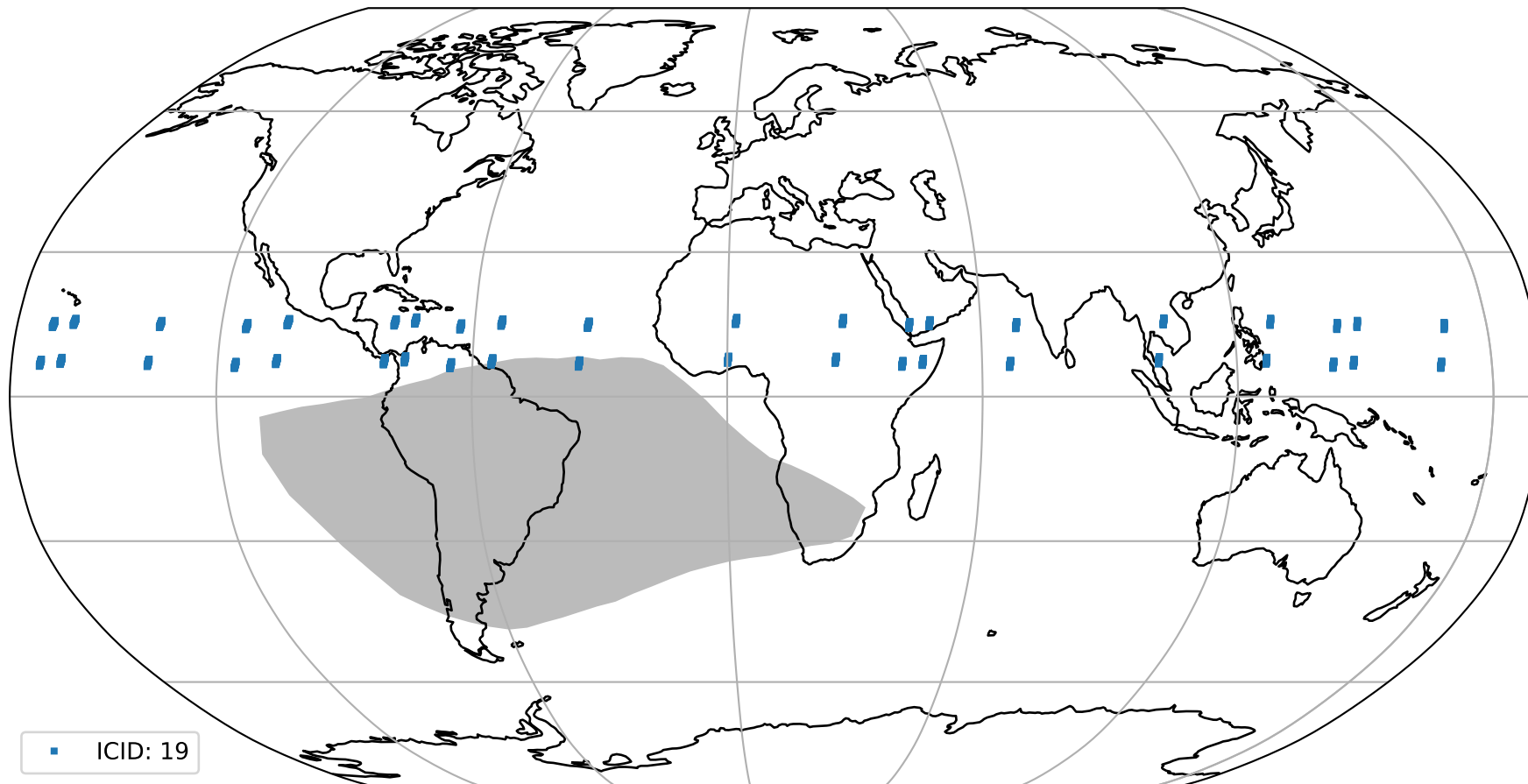
orbits : 20 in [10282, 10327]
coverage : 2019-10-08 / 2019-10-11
created : 2023-08-22T08:00:51

Histograms of pixel-quality



Tropomi SWIR pixel quality (official) ground-tracks of Sentinel-5P

orbits : 20 in [10282, 10327]
coverage : 2019-10-08 / 2019-10-11
created : 2023-08-22T08:00:52



Tropomi SWIR pixel quality (official)

orbits : [2827, 10327]
coverage : 2018-04-30 / 2019-10-11
created : 2023-08-22T08:00:52

trend of pixel quality & temperatures

