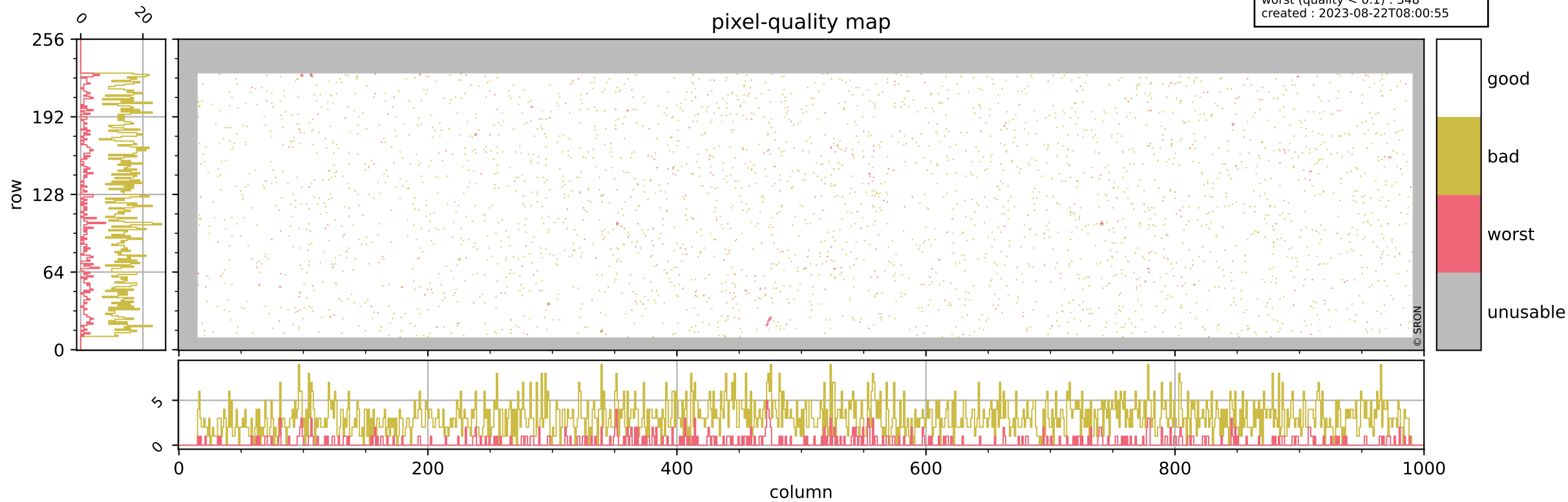


Tropomi SWIR pixel quality (official)

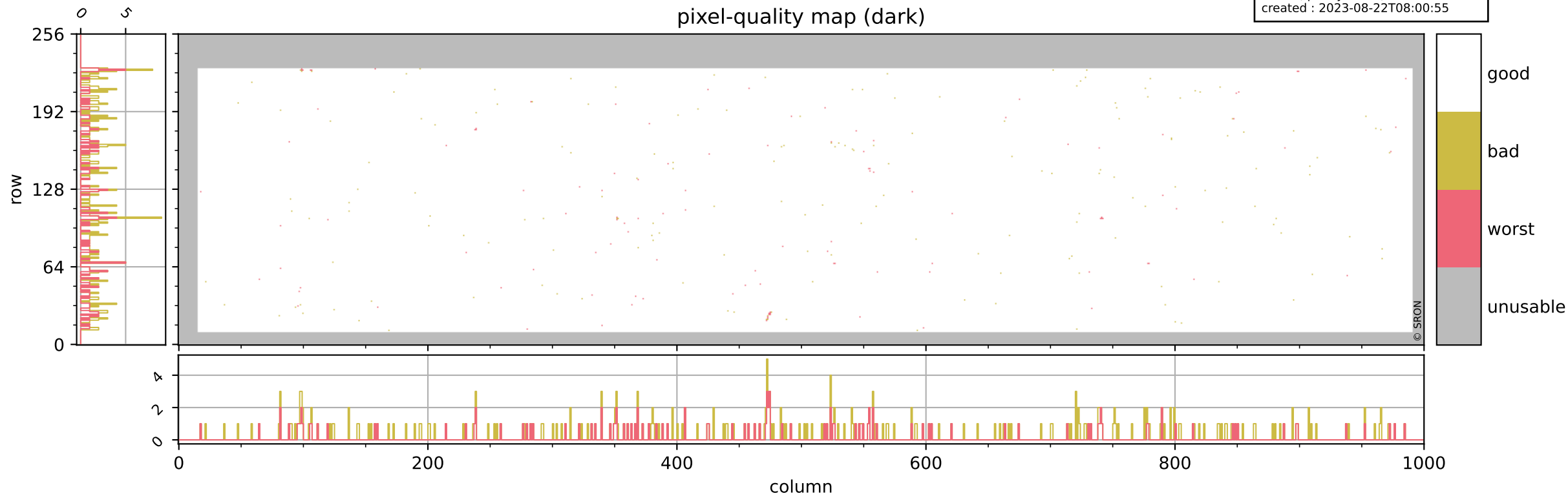
orbits : 20 in [10312, 10357]
coverage : 2019-10-10 / 2019-10-13
bad (quality < 0.8) : 3102
worst (quality < 0.1) : 348
created : 2023-08-22T08:00:55



Tropomi SWIR pixel quality (official)

orbits : 20 in [10312, 10357]
coverage : 2019-10-10 / 2019-10-13
bad (quality < 0.8) : 291
worst (quality < 0.1) : 116
created : 2023-08-22T08:00:55

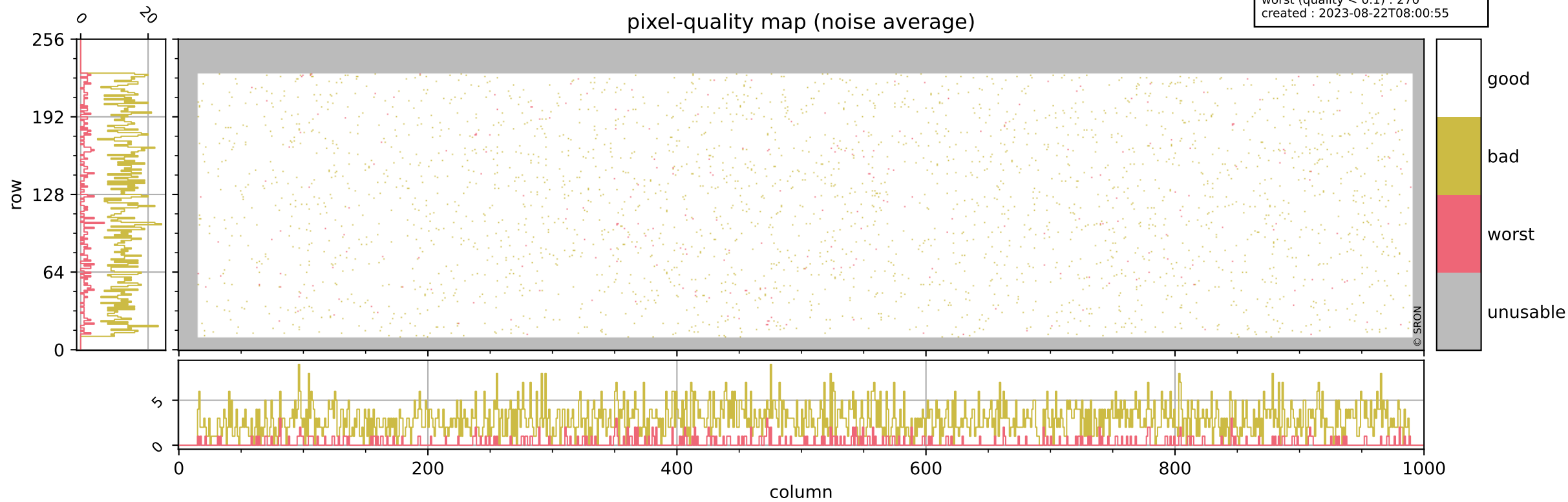
pixel-quality map (dark)



Tropomi SWIR pixel quality (official)

orbits : 20 in [10312, 10357]
coverage : 2019-10-10 / 2019-10-13
bad (quality < 0.8) : 2852
worst (quality < 0.1) : 270
created : 2023-08-22T08:00:55

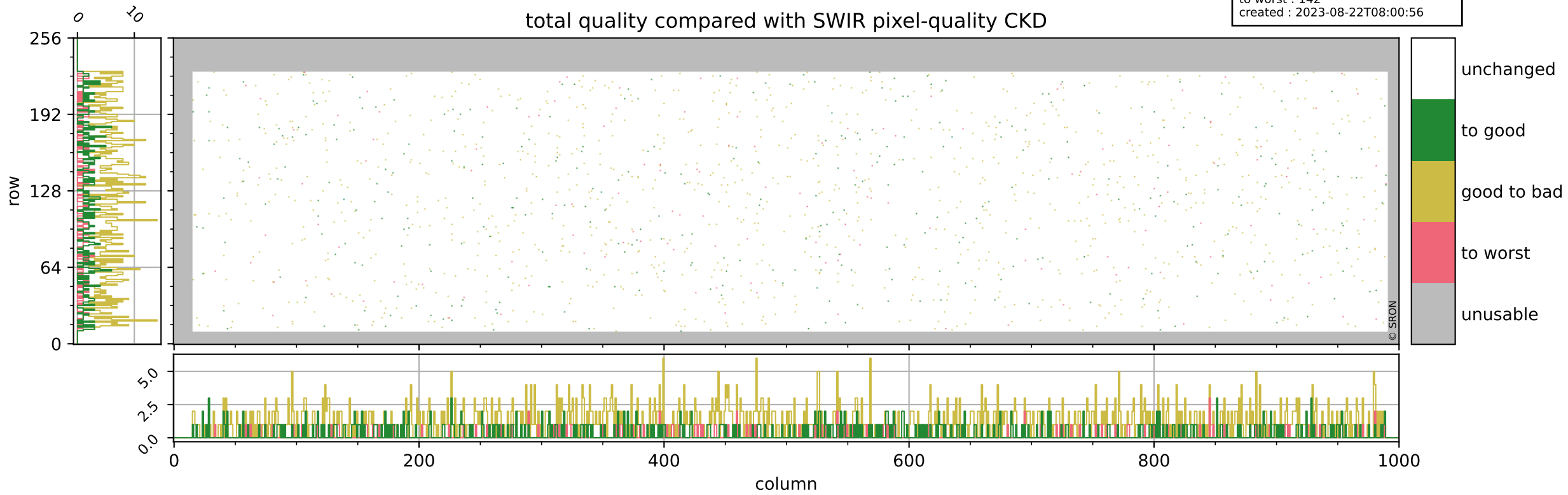
pixel-quality map (noise average)



Tropomi SWIR pixel quality (official)

orbits : 20 in [10312, 10357]
coverage : 2019-10-10 / 2019-10-13
to good : 347
good to bad : 1062
to worst : 142
created : 2023-08-22T08:00:56

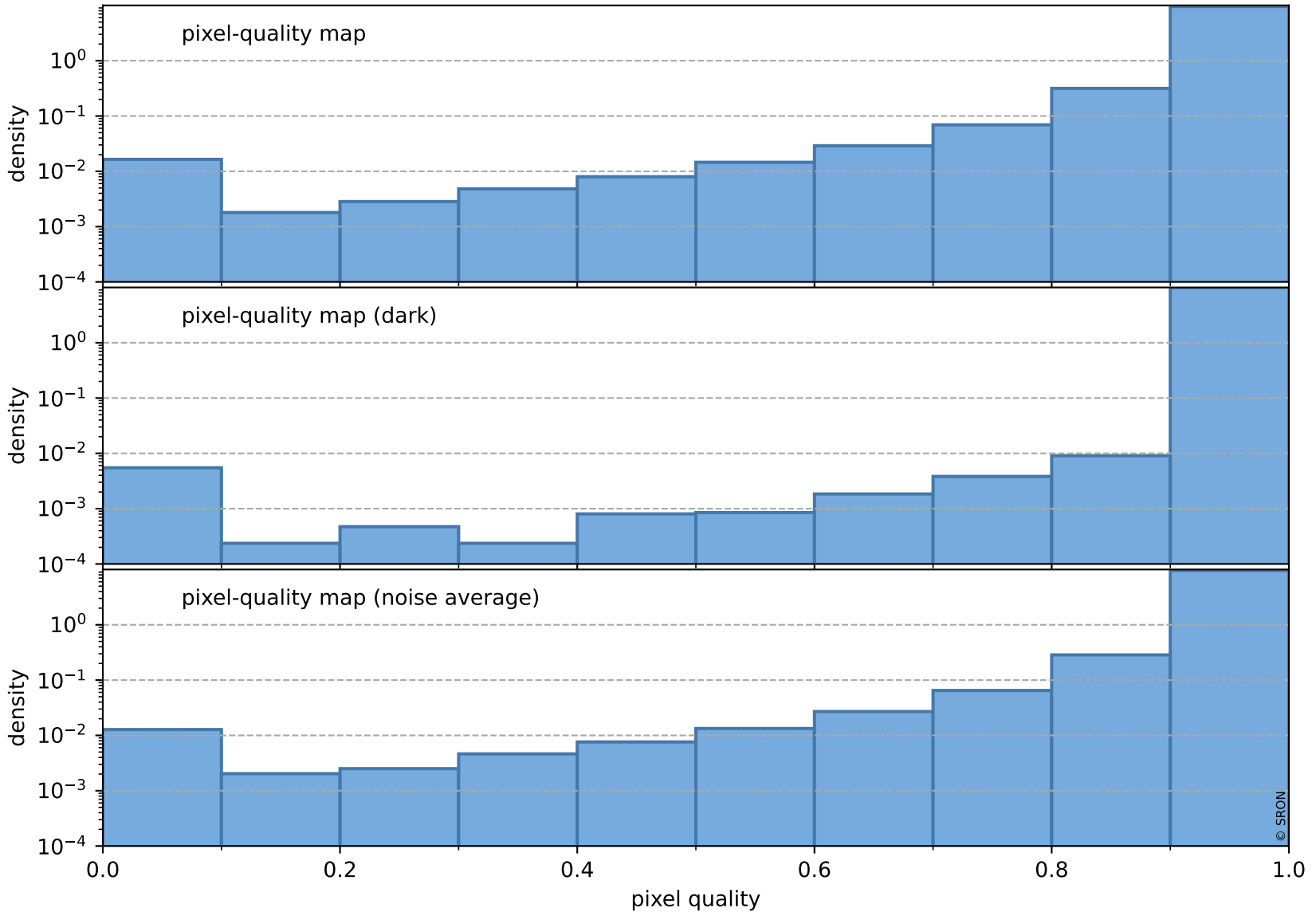
total quality compared with SWIR pixel-quality CKD



Tropomi SWIR pixel quality (official)

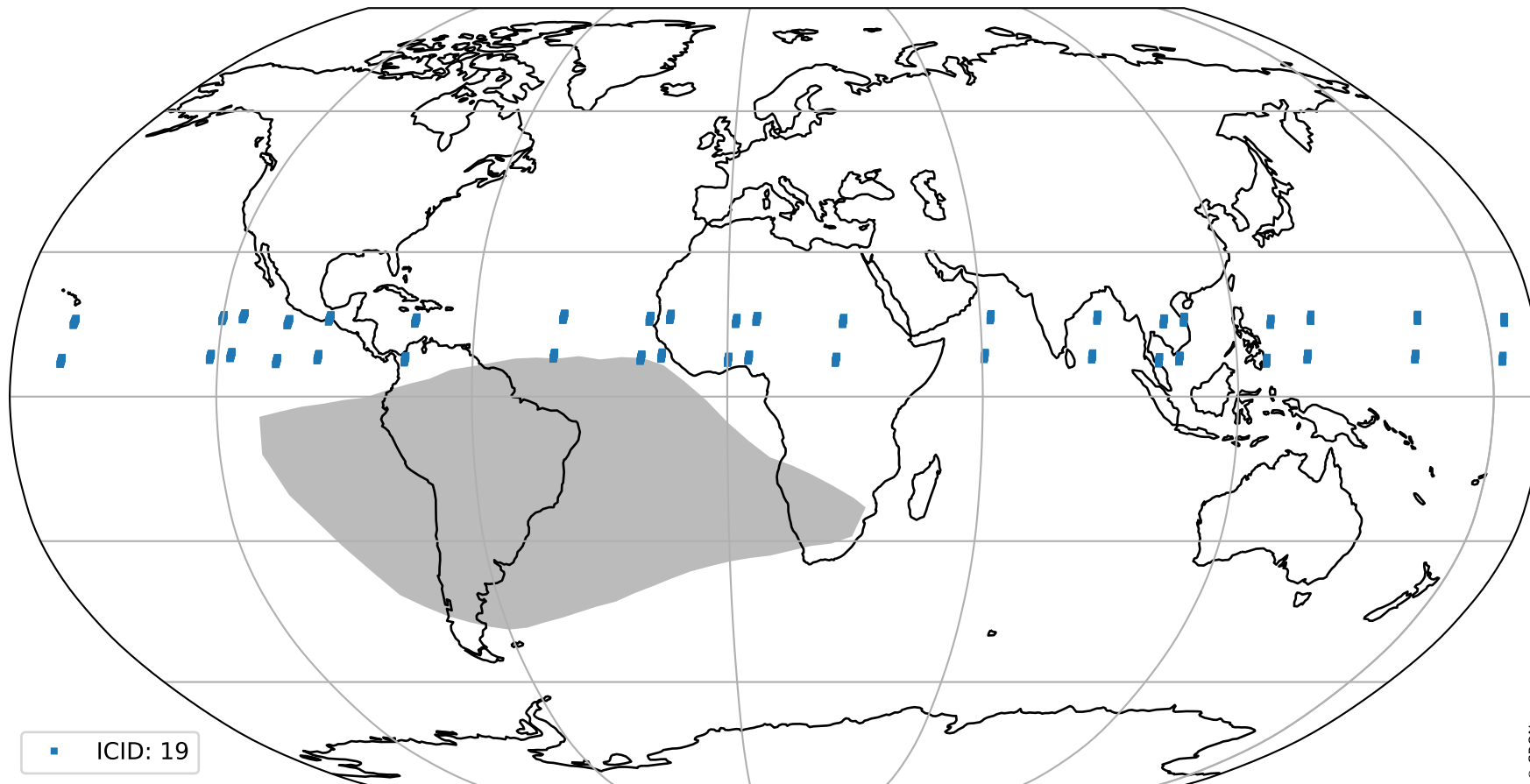
orbits : 20 in [10312, 10357]
coverage : 2019-10-10 / 2019-10-13
created : 2023-08-22T08:00:56

Histograms of pixel-quality



Tropomi SWIR pixel quality (official) ground-tracks of Sentinel-5P

orbits : 20 in [10312, 10357]
coverage : 2019-10-10 / 2019-10-13
created : 2023-08-22T08:00:56



Tropomi SWIR pixel quality (official)

orbits : [2827, 10357]
coverage : 2018-04-30 / 2019-10-13
created : 2023-08-22T08:00:57

trend of pixel quality & temperatures

