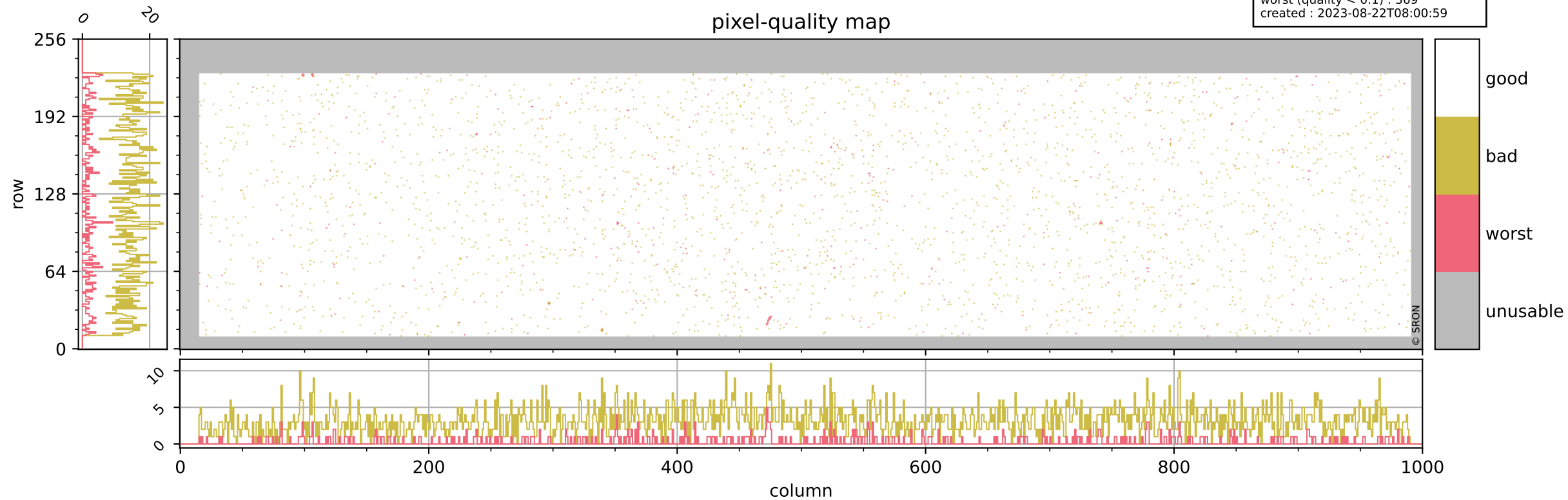


Tropomi SWIR pixel quality (official)

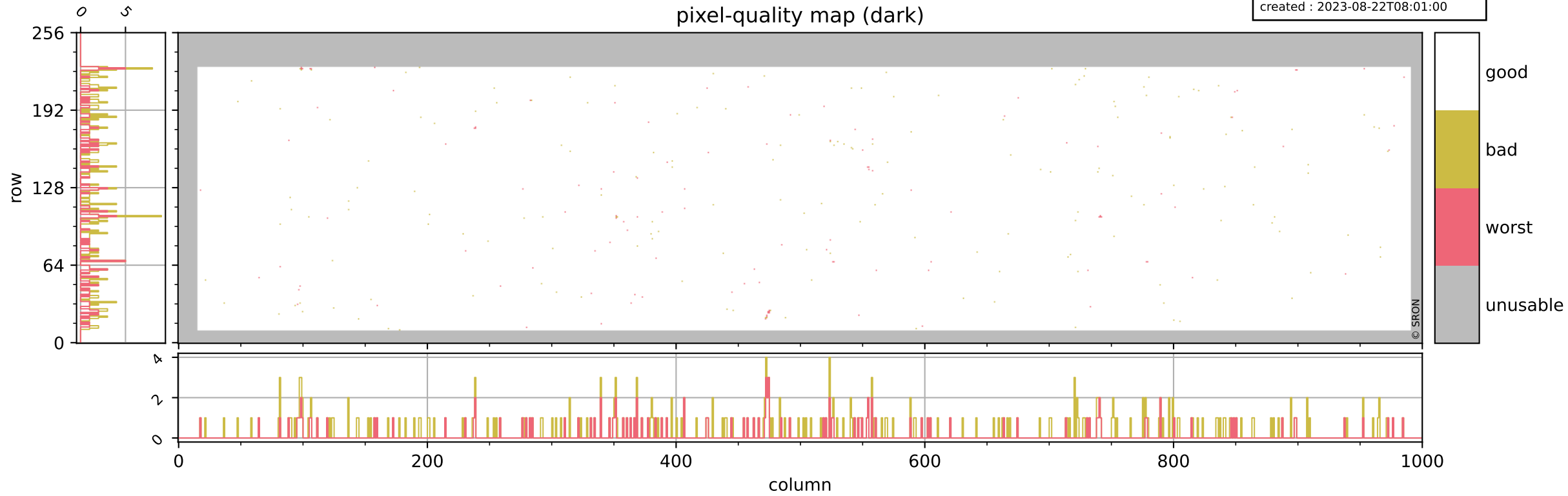
orbits : 20 in [10342, 10387]
coverage : 2019-10-12 / 2019-10-15
bad (quality < 0.8) : 3162
worst (quality < 0.1) : 369
created : 2023-08-22T08:00:59



Tropomi SWIR pixel quality (official)

orbits : 20 in [10342, 10387]
coverage : 2019-10-12 / 2019-10-15
bad (quality < 0.8) : 289
worst (quality < 0.1) : 116
created : 2023-08-22T08:01:00

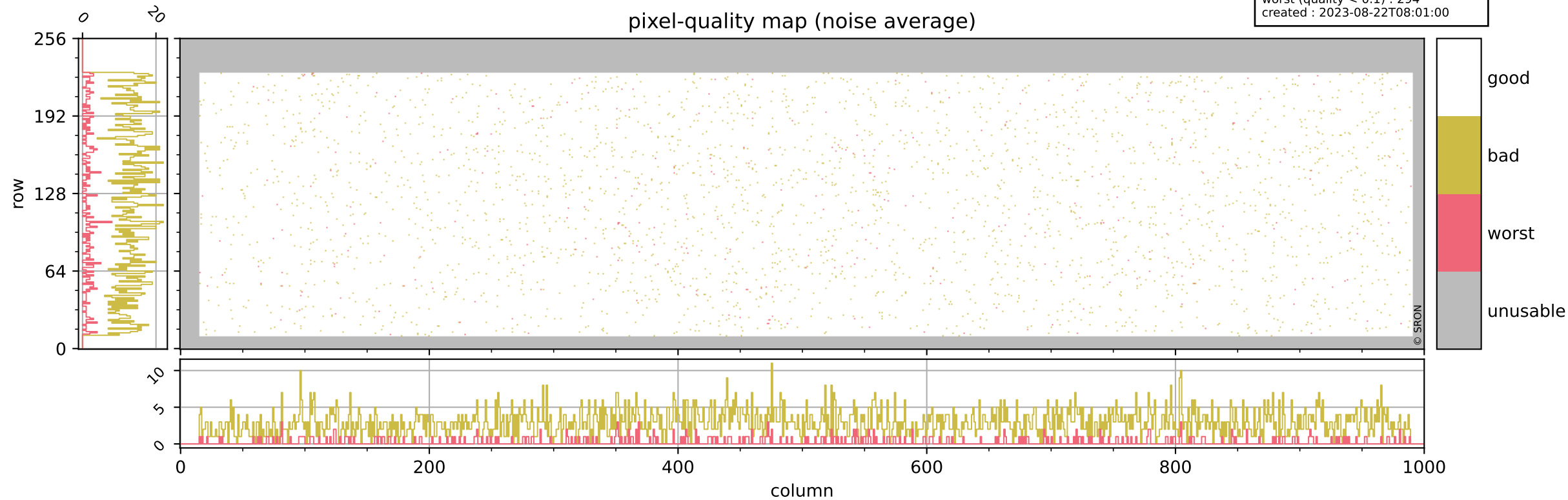
pixel-quality map (dark)



Tropomi SWIR pixel quality (official)

orbits : 20 in [10342, 10387]
coverage : 2019-10-12 / 2019-10-15
bad (quality < 0.8) : 2906
worst (quality < 0.1) : 294
created : 2023-08-22T08:01:00

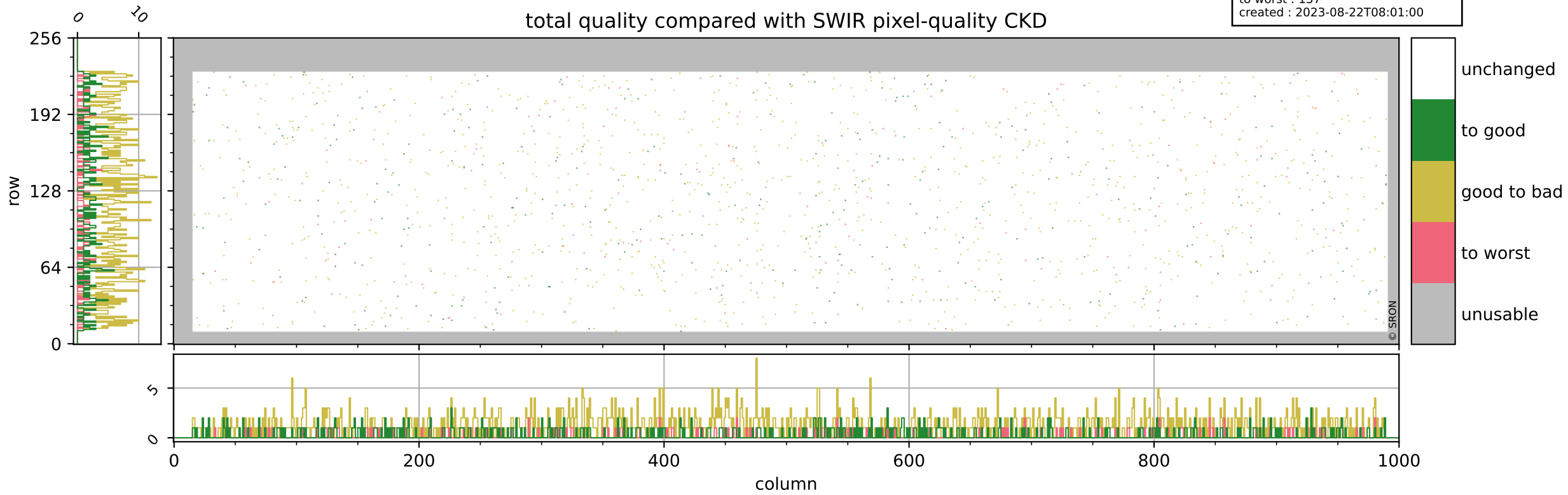
pixel-quality map (noise average)



Tropomi SWIR pixel quality (official)

orbits : 20 in [10342, 10387]
coverage : 2019-10-12 / 2019-10-15
to good : 345
good to bad : 1106
to worst : 157
created : 2023-08-22T08:01:00

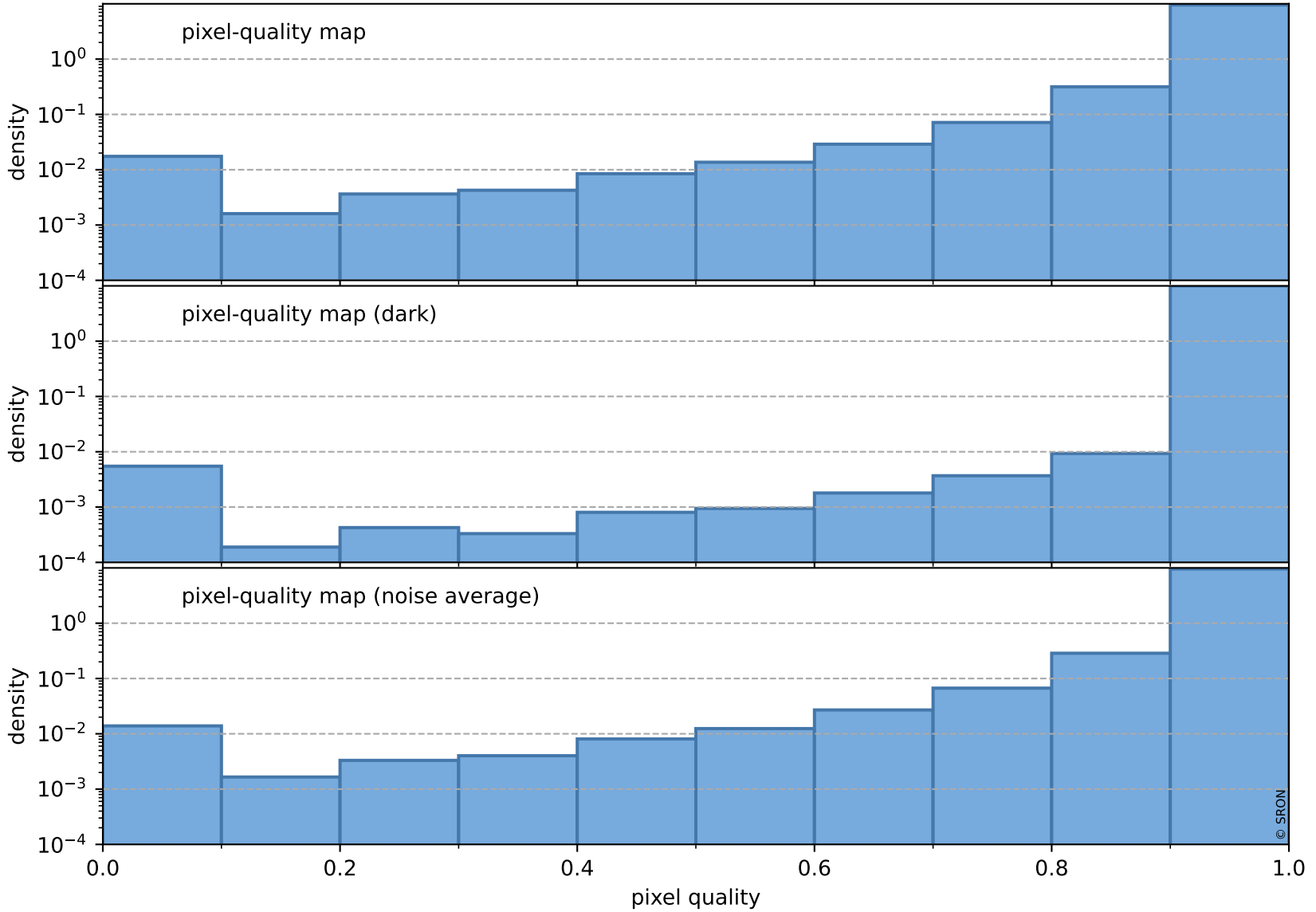
total quality compared with SWIR pixel-quality CKD



Tropomi SWIR pixel quality (official)

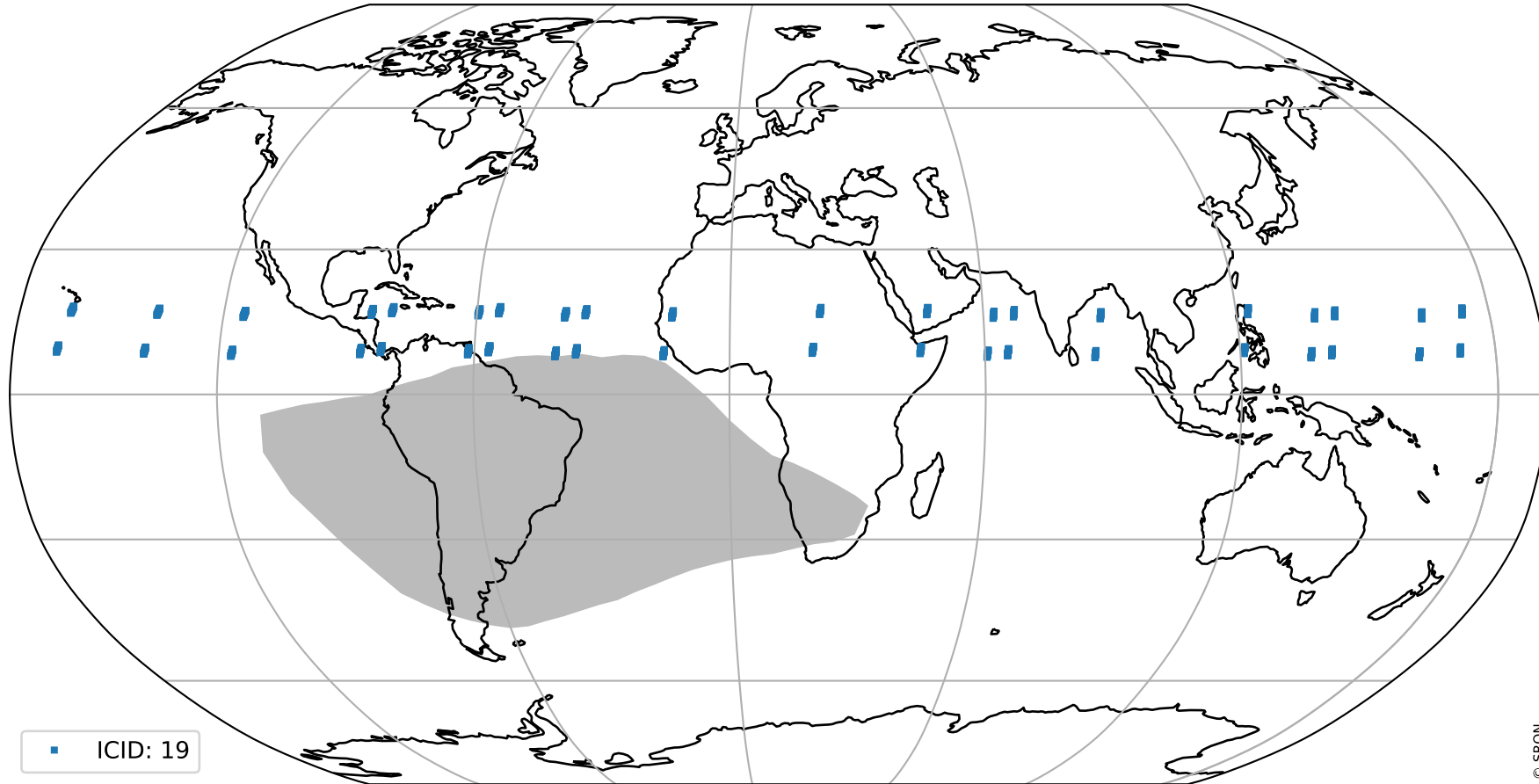
orbits : 20 in [10342, 10387]
coverage : 2019-10-12 / 2019-10-15
created : 2023-08-22T08:01:00

Histograms of pixel-quality



Tropomi SWIR pixel quality (official) ground-tracks of Sentinel-5P

orbits : 20 in [10342, 10387]
coverage : 2019-10-12 / 2019-10-15
created : 2023-08-22T08:01:01



Tropomi SWIR pixel quality (official)

orbits : [2827, 10387]
coverage : 2018-04-30 / 2019-10-15
created : 2023-08-22T08:01:01

trend of pixel quality & temperatures

