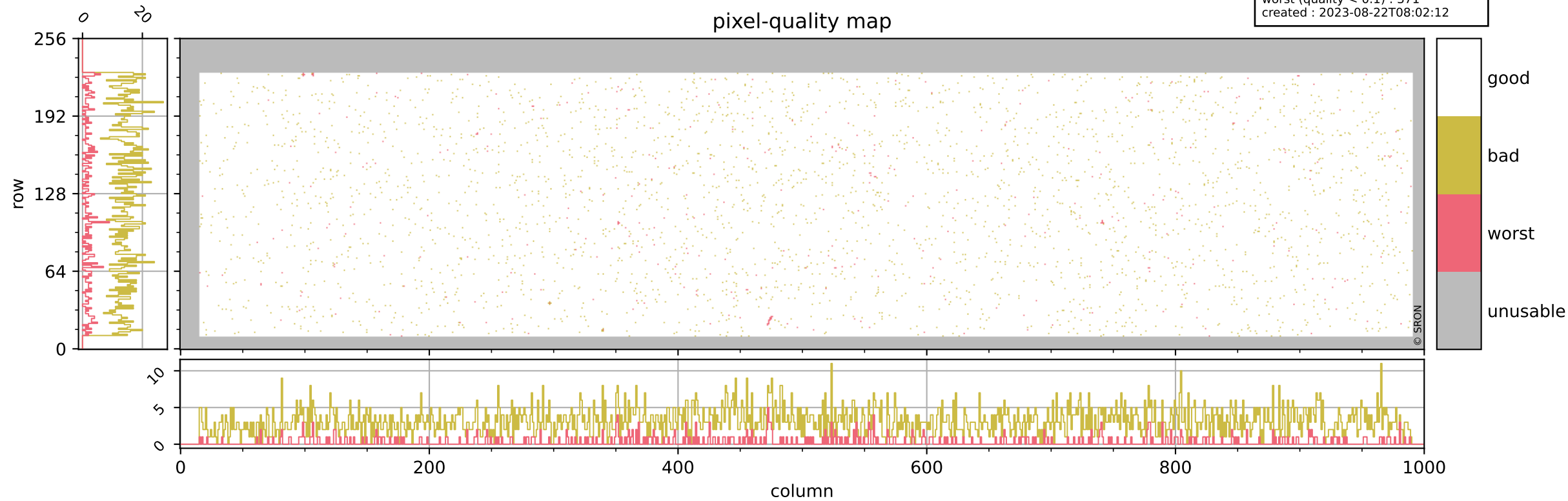


Tropomi SWIR pixel quality (official)

orbits : 20 in [10822, 10867]
coverage : 2019-11-15 / 2019-11-18
bad (quality < 0.8) : 3158
worst (quality < 0.1) : 371
created : 2023-08-22T08:02:12

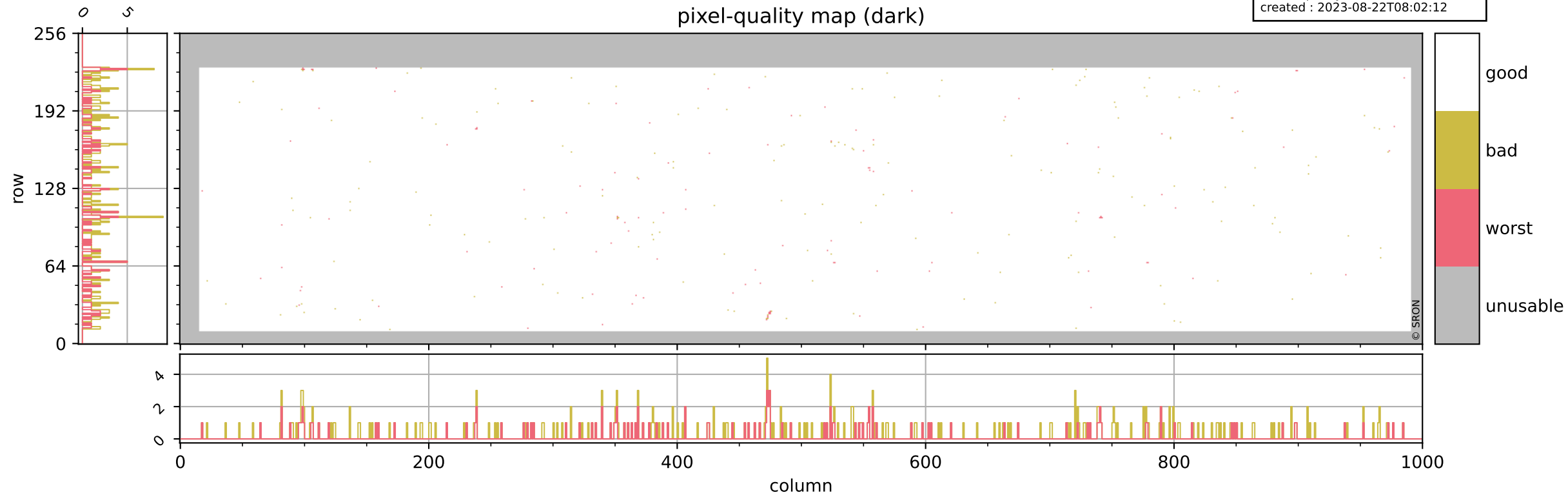
pixel-quality map



Tropomi SWIR pixel quality (official)

orbits : 20 in [10822, 10867]
coverage : 2019-11-15 / 2019-11-18
bad (quality < 0.8) : 292
worst (quality < 0.1) : 118
created : 2023-08-22T08:02:12

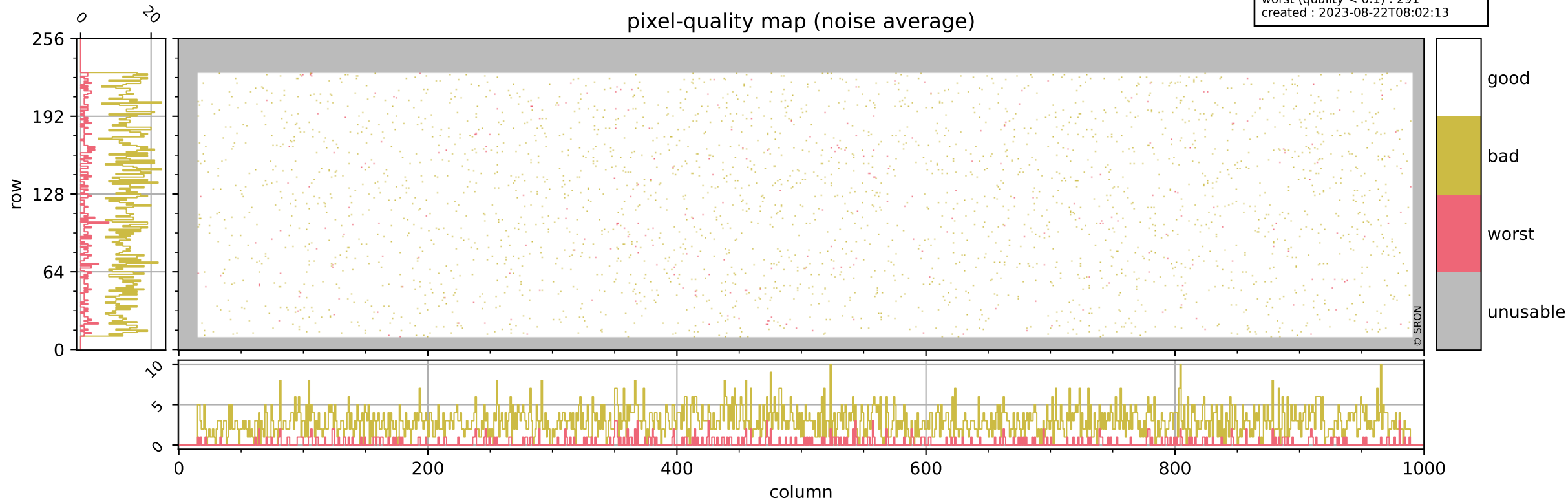
pixel-quality map (dark)



Tropomi SWIR pixel quality (official)

orbits : 20 in [10822, 10867]
coverage : 2019-11-15 / 2019-11-18
bad (quality < 0.8) : 2902
worst (quality < 0.1) : 291
created : 2023-08-22T08:02:13

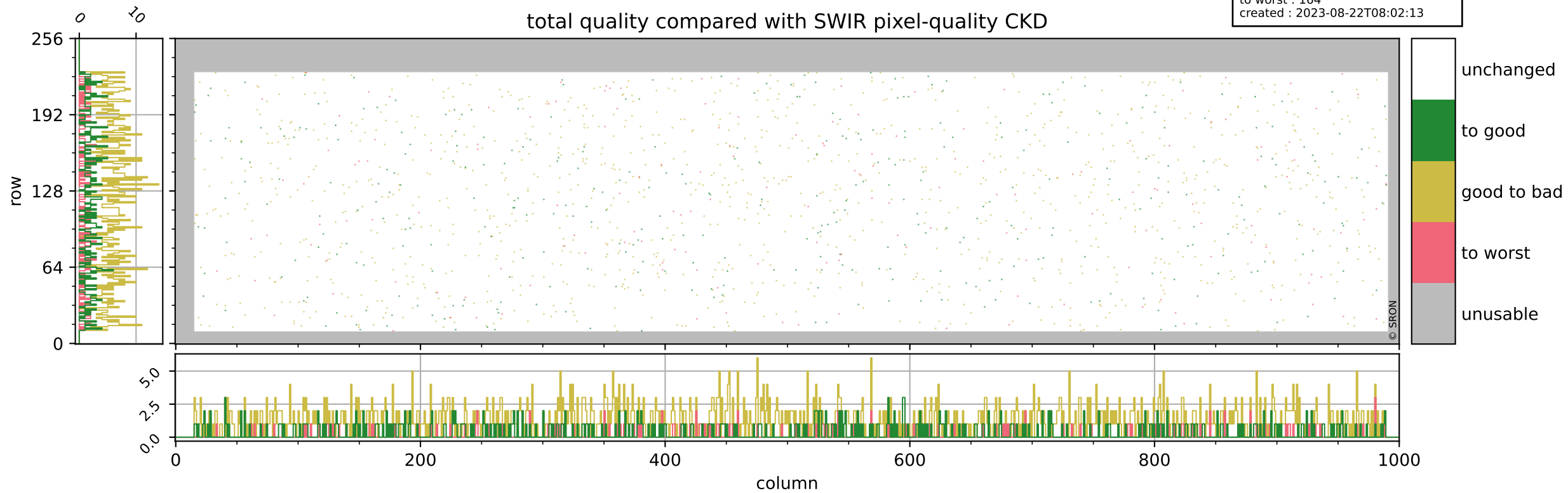
pixel-quality map (noise average)



Tropomi SWIR pixel quality (official)

orbits : 20 in [10822, 10867]
coverage : 2019-11-15 / 2019-11-18
to good : 360
good to bad : 1105
to worst : 164
created : 2023-08-22T08:02:13

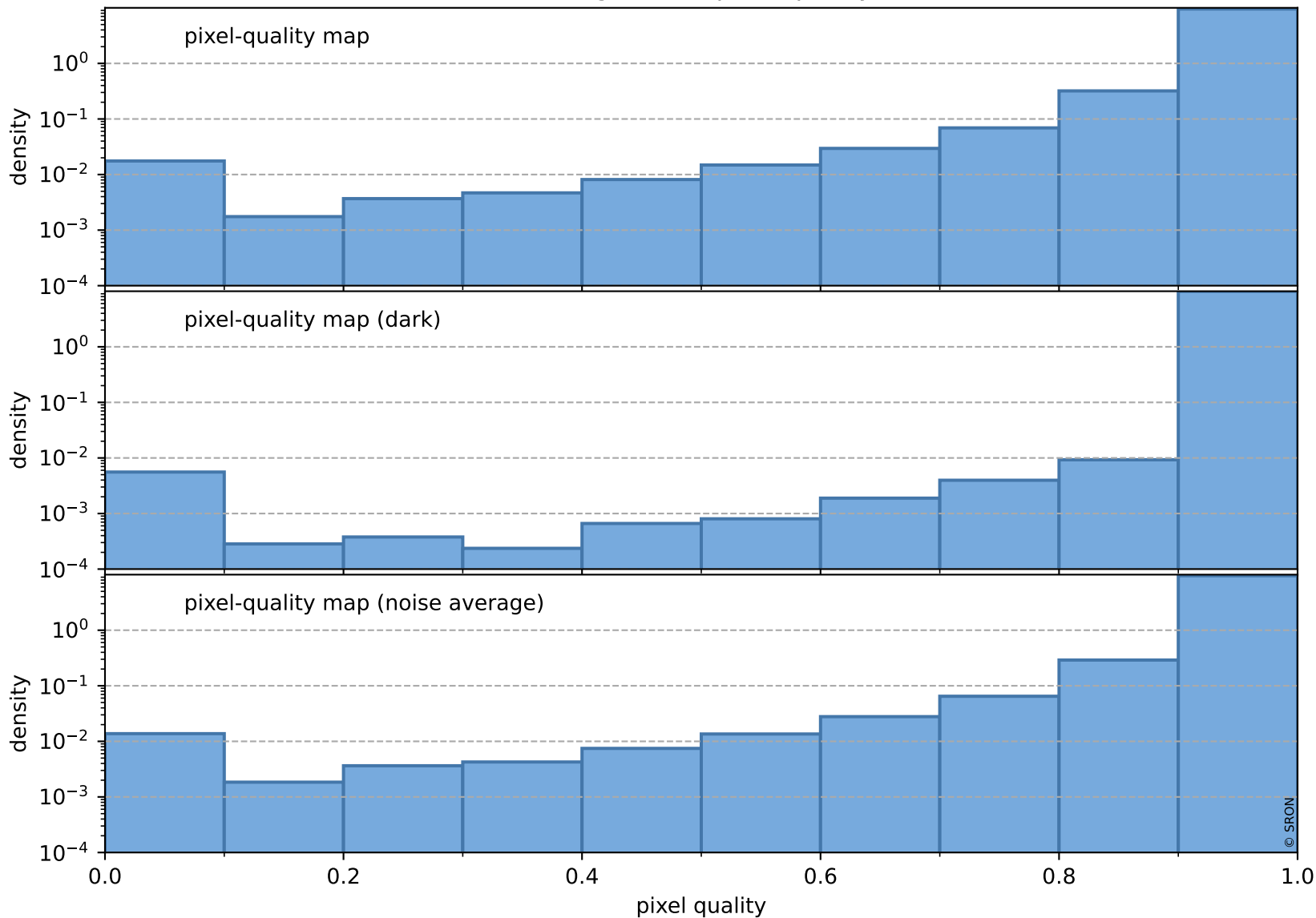
total quality compared with SWIR pixel-quality CKD



Tropomi SWIR pixel quality (official)

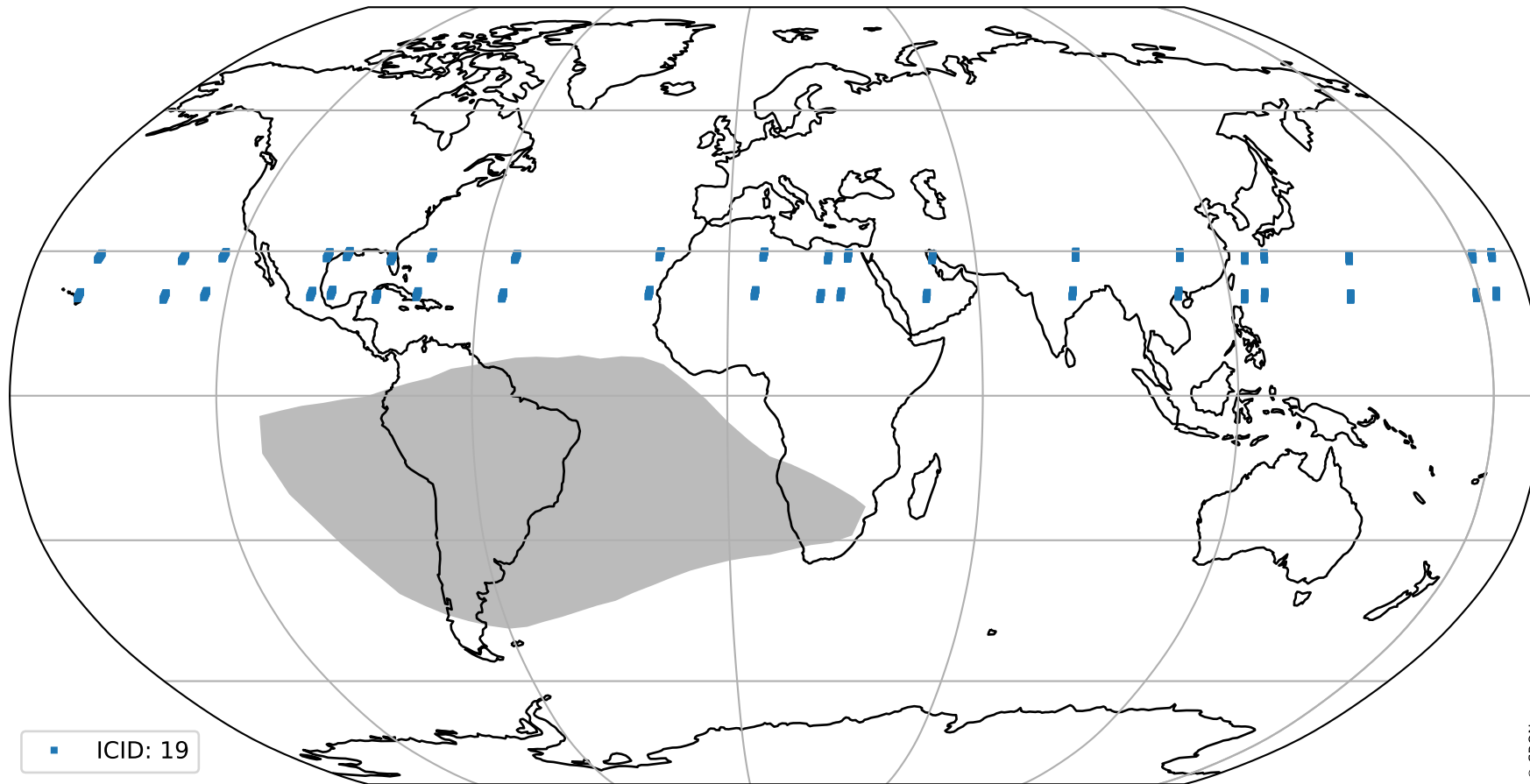
orbits : 20 in [10822, 10867]
coverage : 2019-11-15 / 2019-11-18
created : 2023-08-22T08:02:13

Histograms of pixel-quality



Tropomi SWIR pixel quality (official) ground-tracks of Sentinel-5P

orbits : 20 in [10822, 10867]
coverage : 2019-11-15 / 2019-11-18
created : 2023-08-22T08:02:13



Tropomi SWIR pixel quality (official)

orbits : [2827, 10867]
coverage : 2018-04-30 / 2019-11-18
created : 2023-08-22T08:02:14

trend of pixel quality & temperatures

